



CRAIG CODY

16 Chestnut Street, Suite 220  
Foxboro, MA 02035  
Tel (781) 831-1281  
Fax (774) 215-5423

Melanie Bachman  
Executive Director  
Connecticut Siting Counsel  
10 Franklin Square  
New Britain, CT 06051

Re: **Notice of Exempt Modification - Shared Emergency Backup Generator  
260 Beckley Road, Berlin, CT 06037**

Dear Ms. Bachman:

American Tower Corporation (“ATC”) currently maintains a wireless telecommunications facility at the above referenced address. ATC’s tower and ground facilities are host to multiple tenants which are existing within a lease area maintained by ATC. ATC does not currently maintain a generator at this cell site.

In an effort to further enhance multiple tenant’s network reliability, ATC intends to modify its facility by installing a new diesel-fueled generator outside in a designated 8’x14’-4” ground space. The generator incorporates a built-in fuel tank as part of the unit. The diesel fuel tanks are double walled for added safety and will be filled by a licensed fuel filling company. (See Facility Compound Plan attached).

Please accept this letter as notification pursuant to R.C.S.A Section 16-50j-73, for construction that constitutes modification pursuant to R.C.S.A Section 16-50j-72(b)(2). In accordance with R.C.S.A Section 16-50j-73, a copy of this submission is being sent to the Town of Berlin. A copy of this submission is also being sent to John & Elaine Matulis, the property owner on which the tower is located.

**ATCs’ Proposed Wireless Modifications Constitutes An “Exempt Modification”**

The proposed modification to the above mentioned Facility constitutes an exempt modification of an existing facility provided for in R.C.S.A Section 16-50j-72(b)(2) and Council regulations promulgated pursuant thereto.

- 1) The proposed modification will not result in an increase in the height of the existing tower.
- 2) The generator and attached fuel tank will remain entirely within the limits of the leased area. The modifications therefor, will not require the extension of the boundary.

- 3) The proposed modification does not increase the noise levels at the boundary by six(6) decibels or more under normal conditions. Proposed modification is only used during emergency power failure.
- 4) The installation of a new generator and attached fuel tank will not change, in any way, radio frequency (RF) emissions at the facility.
- 5) The facility has received all municipal zoning approvals and building permits. (Regs., Conn. State Agencies Section 16-50j-72))

For all the foregoing reasons, American Tower Corporation respectfully submits that the proposed modifications to the above-referenced telecommunications facility constitutes an exempt modification under R.C.S.A Section 16-50j-72(b)(2)

Respectfully submitted,

---

**Craig Cody 781.831.1281**

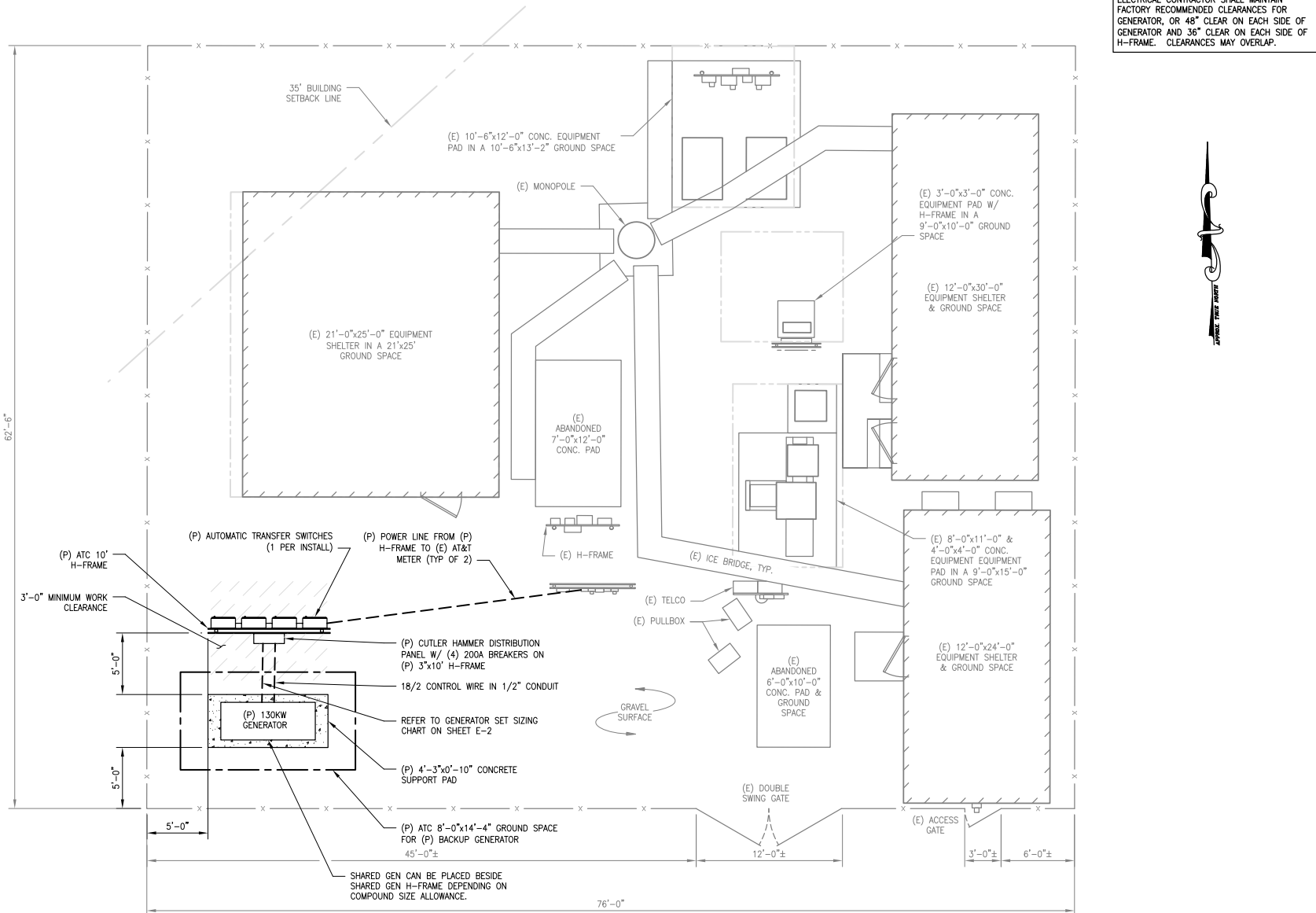
On behalf of American Tower Corporation  
c/o Tower Resource Management, Inc.  
16 Chestnut Street, Suite 220  
Foxboro, MA 02035

cc: **Town of Berlin, CT**  
**John & Elaine Matulis**

Exhibit 1

Site Plan

ELECTRICAL CONTRACTOR SHALL MAINTAIN FACTORY RECOMMENDED CLEARANCES FOR GENERATOR, OR 48" CLEAR ON EACH SIDE OF H-FRAME. CLEARANCES MAY OVERLAP.



1 SITE PLAN  
SCALE: 1/8" = 1'-0"

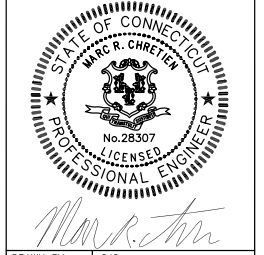
**ADVANCED**  
ENGINEERING GROUP, P.C.  
Civil Engineering - Site Development  
Surveying - Telecommunications  
500 NORTH BROADWAY  
EAST PROVIDENCE, RI 02914  
PH: 401-354-2403 FAX:  
401-633-6354

**TRM**  
Convergent Network Solutions  
TOWER RESOURCE MANAGEMENT  
15 CHESTNUT STREET, SUITE 228  
FOXBORO, MA 02035  
WWW.TRMCOM.COM

**AMERICAN TOWER**  
ATC TOWER SERVICES, INC.  
8505 FREPORT PARKWAY  
SUITE 135  
IRVING, TX 75063  
PHONE: (972) 999-8900  
FAX: (972) 999-8940  
NYSE AMT

ATC SITE NUMBER:  
**302483**  
ATC SITE NAME:  
BRIN-BERLIN  
SITE ADDRESS:  
260 BECKLEY RD  
BERLIN, CT 06037

THESE DRAWINGS AND/OR THE ACCOMPANYING SPECIFICATION AS INSTRUMENTS OF SERVICE ARE THE EXCLUSIVE PROPERTY OF ATC TOWER SERVICES, INC. THEIR USE AND REPRODUCTION SHALL BE RESTRICTED TO THE ORIGINAL SITE FOR WHICH THEY ARE PREPARED. ANY USE OR DISCLOSURE OTHER THAN THAT WHICH RELATES TO ATC TOWER SERVICES, INC. OR THE SPECIFIC PROJECT IS STRICTLY PROHIBITED. THESE DOCUMENTS SHALL REMAIN THE PROHIBITED PROPERTY OF ATC TOWER SERVICES, INC. WHETHER OR NOT THE PROJECT IS EXECUTED. NEITHER THE ARCHITECT NOR THE ENGINEER WILL BE PROVIDING ON-SITE CONSTRUCTION REVIEW OF THIS CONSTRUCTION. MUST VERIFY ALL DIMENSIONS AND ADVISE PROJECT ATC TOWER SERVICES, INC. OF ANY DISCREPANCIES. ANY PRIOR ISSUANCE OF THIS DRAWING IS SUPERSEDED BY THE LATEST VERSION ON FILE WITH ATC TOWER SERVICES, INC.



DRAWN BY: CJG  
CHECKED BY: SNA  
DATE DRAWN: 03-21-2014  
JOB NO: 302483  
SHEET TITLE:

SITE PLAN  
SHEET NUMBER: A-1  
REV. # 0