

Nextel Communications

100 Corporate Place, Rocky Hill, CT 06067  
860 513-5400 FAX 860 513-5444

**NEXTEL®**

**RECEIVED**

SEP 19 2000

CONNECTICUT  
SITING COUNCIL

September 19, 2000

Mr. Mortimer A. Gelston, Chairman  
Connecticut Siting Council  
10 Franklin Square  
New Britain, Connecticut 06051

**RE: Modification of an Existing Telecommunications Facility at 664 Rimmon Hill Road, Beacon Falls, Connecticut (Docket No. 173)**

Dear Chairman Gelston:

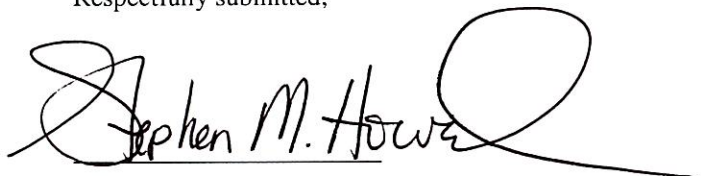
Please find enclosed an original and twenty copies of a request from Nextel Communications Inc. ("Nextel") to modify an exempt tower and associated equipment at an existing telecommunications facility located at 664 Rimmon Hill Road, Beacon Falls, Connecticut. This facility is owned and operated by the Springwich Cellular Limited Partnership (SCLP) and was certificated by the Council on April 11, 1996 (Docket No. 173).

Nextel desires to make shared use of this facility to provide wireless system coverage to this portion of Beacon Falls and State Route 8, rather than possibly needing to construct a new communications tower in the general area.

The enclosed notice and attached materials detail how the addition of the proposed antennas and associated equipment at the tower site meet all of the criteria set forth in Section 16-50j-72(b)(2) of the Regulations of Connecticut State Agencies and therefore is an exempt modification pursuant to Section 16-50j-73 of the regulation.

Please call Stephen M. Howard at (860) 513-5458 if you have any questions about the Nextel proposal. Thank you for your consideration in this matter.

Respectfully submitted,



Stephen M. Howard  
Manager Real Estate and Zoning  
Nextel Communications, Inc.

Enclosure

cc: Susan A. Cable, First Selectman  
Peter van Wilgen, SCLP

**SCLP Tower**  
**664 Rimmon Hill Road**  
**Beacon Falls, Connecticut**

Pursuant to Section 16-50i(a)(5) of the Connecticut General Statutes and Section 16-50j-72(b)(2), as amended, of the Regulations of Connecticut State Agencies, Nextel Communications Inc., ("Nextel") hereby notifies the Connecticut Siting Council of its intent to modify an existing telecommunications facility located at 664 Rimmon Hill Road, Beacon Falls, Connecticut. The facility is owned by SCLP.

**BACKGROUND**

The SCLP facility consists of a 160-foot AGL monopole tower that is shared by SCLP and Verizon. This facility received a Certificate of Environmental Compatibility and Public Need from the Council on April 11, 1996.

**DISCUSSION**

Nextel plans to install twelve (12) panel antennas on the existing facility with the centerline of the antennas at the 137.5-foot level (centerline) of the 160-foot tower (see Attachment A). Two (2) GPS receive-only antennas will be installed on the Nextel shelter.

Nextel will install its associated radio equipment in a 10-foot by 20-foot equipment shelter. This shelter will be placed at the base of the facility, completely within the existing leased area (see Attachment A).

**POWER DENSITY INFORMATION**

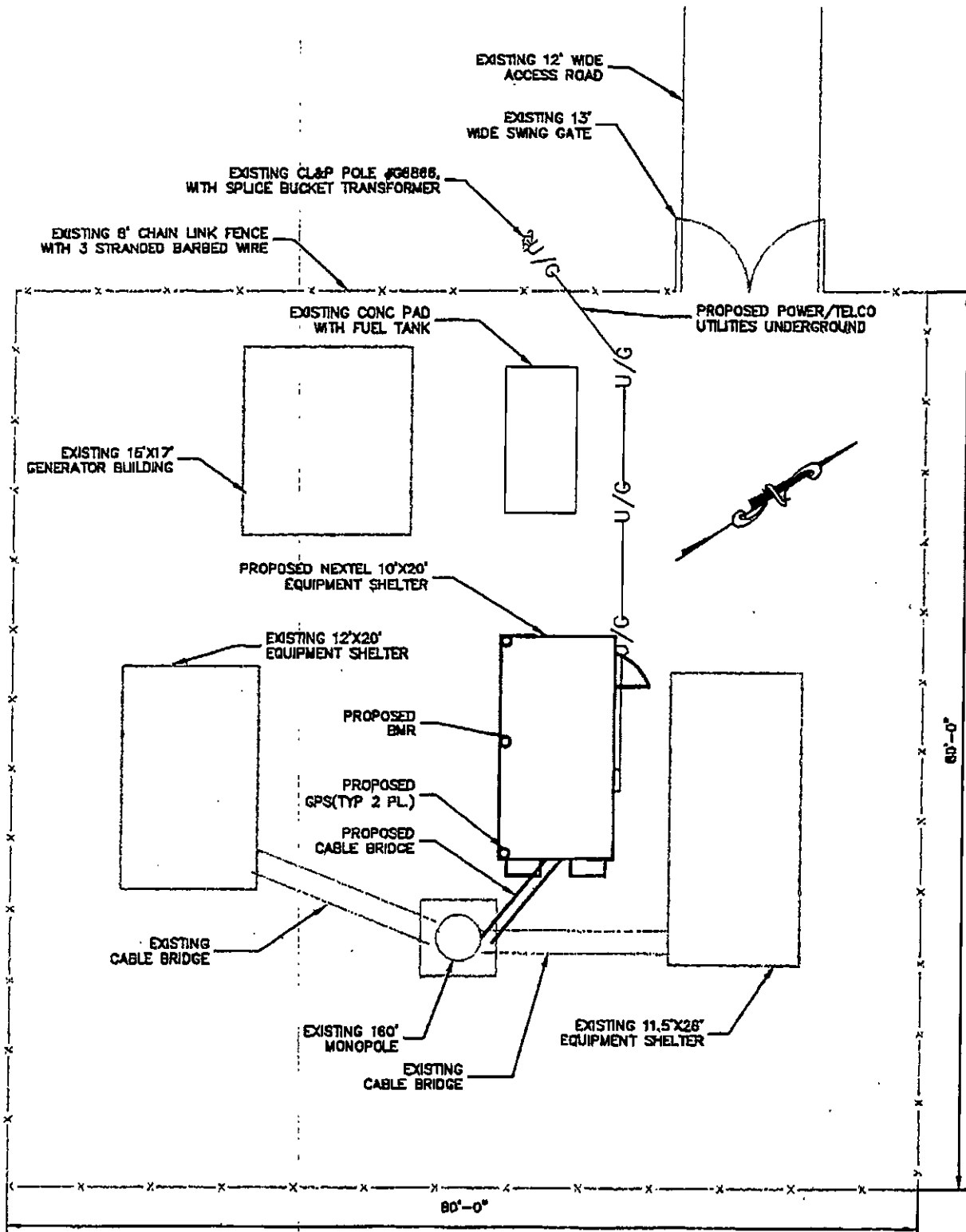
Based upon the Docket No. 173 record, the "worst case" power density level without the proposed antennas has been calculated to be approximately 14.8% of the State/Federal Standard for mixed frequency sites. The addition of Nextel's antennas will, using "worst case" calculations, add 0.01604mW/cm<sup>2</sup>, or 3.02% of the standard applicable to Nextel's frequencies (0.56733 mW/cm<sup>2</sup>) and bring the total combined power density level to approximately 17.82% of the State/Federal Standard.

## **CONCLUSION**

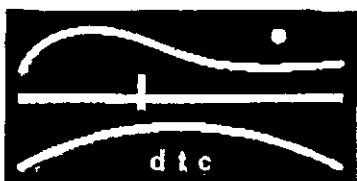
The proposed additions do not constitute a “modification” of an existing facility as defined in Connecticut General Statutes Section 16-50i(d) and are consistent with the exception criteria found in Section 16-50j-72(b)(2) of the Regulations of Connecticut State Agencies in that the addition of Nextel’s antennas and equipment will not increase the existing tower height or extend the boundaries of the site; will not increase noise levels by six (6) decibels or more at the site’s boundaries; and will not increase the total radio frequency electromagnetic radiation above the standard set forth in Section 22(a)–162 of the Connecticut General Statutes. In summary, this proposed addition will not have a substantial adverse environmental effect.

For the reasons discussed above, Nextel respectfully requests that the Council acknowledge that this Notice of Modification meets the Council’s exemption criteria, and permit Nextel to share use of this facility.

# ATTACHMENT A



REV. 1, KPH, 9/8/00



DIVERSIFIED TECHNOLOGY CONSULTANTS  
ONE WASHINGTON AVENUE NORTH HAVEN CT 06470  
203.239.4200 203.239.7370 FAX

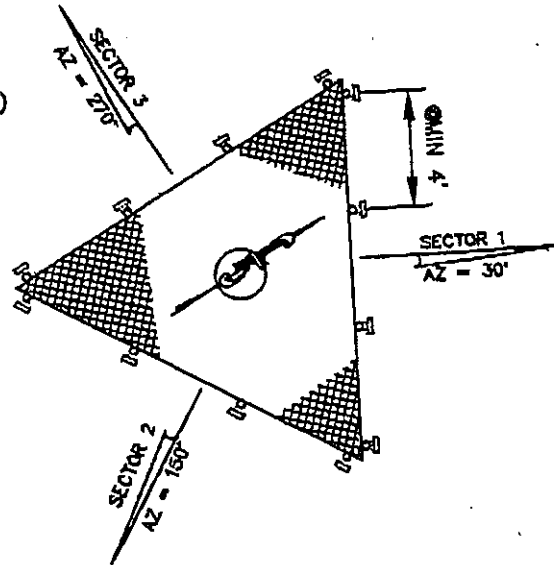
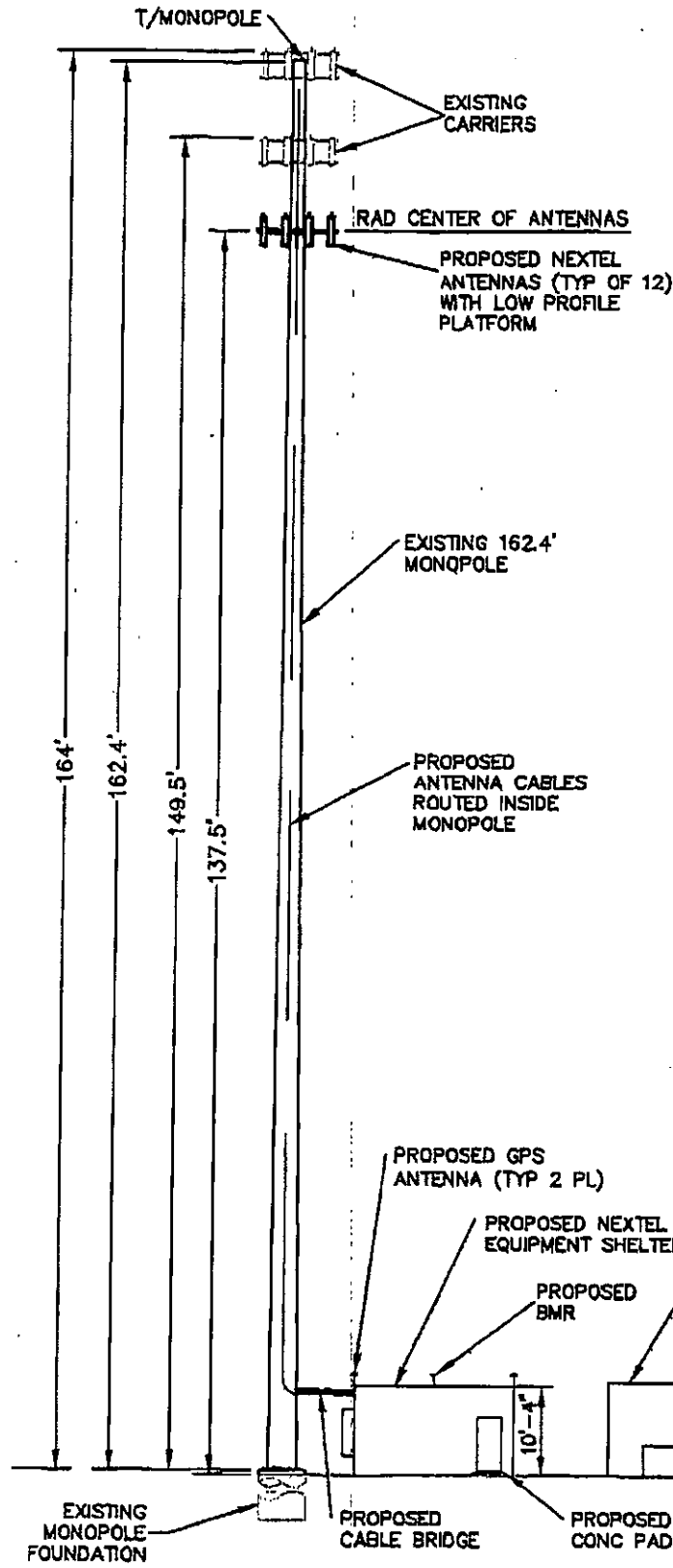


100 Corporate Plaza  
Bloomington, IL 61707  
(847) 613-6407

**NEXTEL COMMUNICATIONS SITE #CT-0058**  
**LEASE EXHIBIT**  
**BEACON FALLS**  
**664 RIMMON HILL ROAD**  
**BEACON FALLS, CT**

DWG. FILE: CT-0058-LE.DWG  
DRAWN: KPH  
SCALE: NTS

DTC No.: 99-403-280  
DATE: 8-2-00  
SHEET 1 OF 2

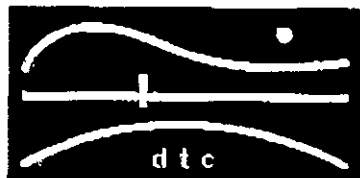


PLAN - ANTENNA ORIENTATION

AZIMUTH	ANTENNA TYPE
30°	DB844H90(E)-XY
150°	DB844H90(E)-XY
270°	DB844H90(E)-XY

NOTE: EXISTING BUILDINGS NOT SHOWN FOR CLARITY

REV. 1, KPH, 9/8/00  
REV. 2, KPH, 9/14/00



DIVERSIFIED TECHNOLOGY CONSULTANTS  
200 WASHINGTON AVENUE NORTH HAVEN CT 06470  
203 336 4300 203 336 7276 FAX



100 Corporate Plaza  
Hartford, CT 06183  
(860) 813-8400

**NEXTEL COMMUNICATIONS SITE #CT-0058**  
**LEASE EXHIBIT**  
**BEACON FALLS**  
**664 RIMMON HILL ROAD**  
**BEACON FALLS, CT**

DWG. FILE: CT-0058-LE.DWG  
DRAWN: KPH  
SCALE: NTS

DTC No.: 99-403-200  
DATE: 8-1-00  
SHEET 2 OF 2