



STATE OF CONNECTICUT
CONNECTICUT SITING COUNCIL

Ten Franklin Square, New Britain, CT 06051

Phone: (860) 827-2935 Fax: (860) 827-2950

E-Mail: siting.council@ct.gov

Web Site: www.ct.gov/csc

VIA ELECTRONIC MAIL

November 3, 2020

Richard Zajac
Network Real Estate Specialist
Crown Castle
4545 East River Road, Suite 320
West Henrietta, NY 14586

RE: **TS-VER-001-201013** – Cellco Partnership d/b/a Verizon Wireless notice of intent to modify an existing telecommunications facility located at 122 Jonathan Trumbull Highway (Route 6), Andover, Connecticut.

Dear Mr. Zajac:

The Connecticut Siting Council (Council) is in receipt of your correspondence of November 2, 2020 submitted in response to the Council's October 27, 2020 notification of an incomplete request for exempt modification with regard to the above-referenced matter.

The submission renders the request for exempt modification complete and the Council will process the request in accordance with the Federal Communications Commission 60-day timeframe.

Thank you for your attention and cooperation.

Sincerely,

s/ Melanie A. Bachman

Melanie A. Bachman
Executive Director

MAB/IN/emr

From: Zajac, Richard <Richard.Zajac@crowncastle.com>

Sent: Monday, November 2, 2020 3:21 PM

To: Nwankwo, Ifeanyi <Ifeanyi.Nwankwo@ct.gov>

Cc: CSC-DL Siting Council <Siting.Council@ct.gov>

Subject: RE: Council Incomplete Letter for TS-VER-001-201013 (122 Jonathan Trumbull Highway (Route 6), Andover)

Good afternoon Ifeanyi,

Please see the attached revised construction drawings per your comments regarding the antenna mount. Do you need me to provide hard copies? Please let me know if there is anything else needed in order to resume the review of this application.

Thank you,

RICH ZAJAC

Site Acquisition Specialist

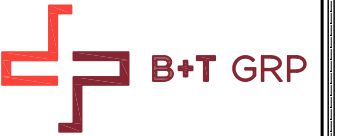
T: (585) 445-5896 M: (607) 346-7212

F: (724) 416-4461

CROWN CASTLE

4545 East River Road, Suite 320

West Henrietta, NY 14586



verizon[✓]

400 FRIBERG PARKWAY
WESTBOROUGH, MA 01581
PH: (508) 330-3300

COVENTRY WEST CT

122 JONATHAN TRUMBULL HWY
ANDOVER, CT 06232
EXISTING MONOPOLE

verizon[✓]

COVENTRY WEST CT

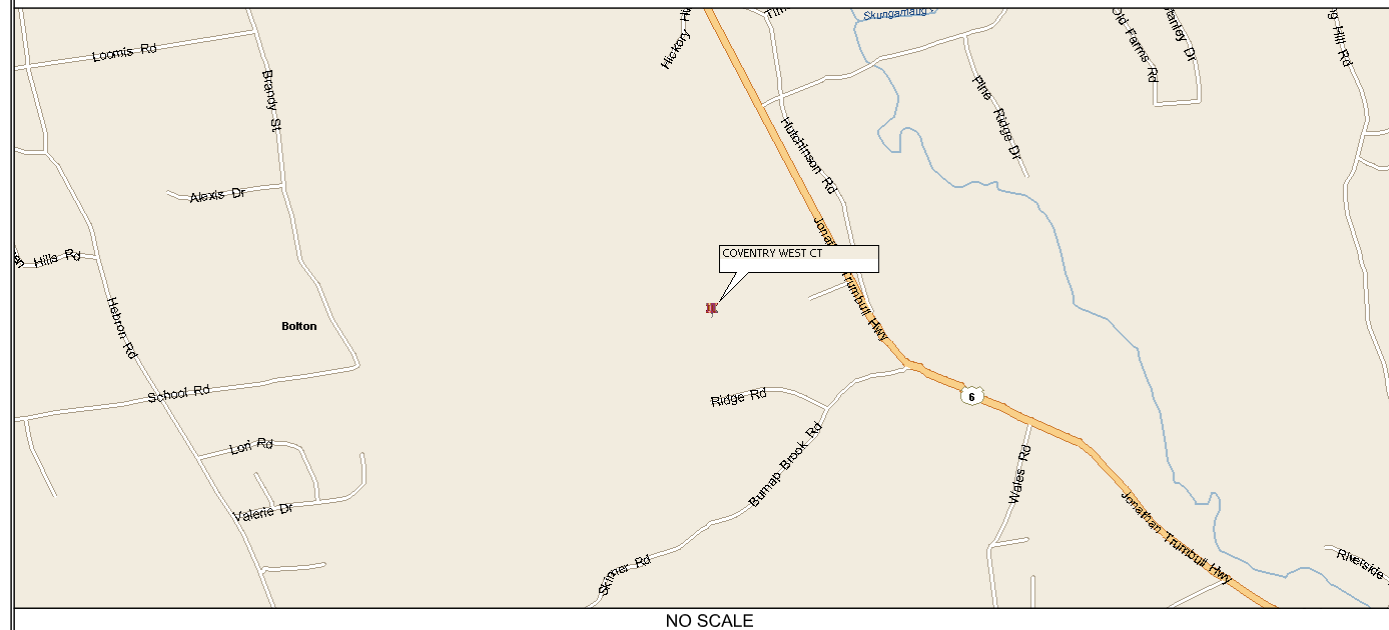
122 JONATHAN TRUMBULL HWY

ANDOVER, CT 06232

PROJECT SUMMARY

SITE NAME: COVENTRY WEST CT
 SITE ADDRESS: 122 JONATHAN TRUMBULL HWY ANDOVER, CT 06232
 TOWER OWNER: CROWN CASTLE
 2000 CORPORATE DR
 CANONSBURG, PA 15317
 842856
 BU NUMBER:
 MAP NUMBER: N/A
 LOT NUMBER: N/A
 CUSTOMER/APPLICANT: VERIZON WIRELESS
 400 FRIEBERG PARKWAY
 WESTBOROUGH, MA 01581
 DAN MYZYRI
 (617) 945-7288
 CONTACT:
 NAD83
 LATITUDE: 41° 45' 0.46" N
 LONGITUDE: 72° 24' 9.63" W
 ELEVATION: 550'
 CURRENT ZONING: N/A
 A&E FIRM: B+T GROUP
 1717 S. BOULDER, SUITE 300
 TULSA, OK 74119
 STEVE THORNHILL
 (918) 587-4630
 OCCUPANCY TYPE: UNMANNED
 A.D.A. COMPLIANCE: FACILITY IS UNMANNED AND NOT FOR HUMAN HABITATION.

LOCATION MAP



DRIVING DIRECTIONS

DEPART FROM BRADLEY INTERNATIONAL AIRPORT ONTO TERMINAL RD. ROAD NAME CHANGES TO BRADLEY FIELD CONNECTOR. ROAD NAME CHANGES TO CT-20 [BRADLEY FIELD CONNECTOR]. TAKE RAMP ONTO I-91 [RICHARD P HORAN MEMORIAL HWY]. AT EXIT 35A, TAKE RAMP ONTO I-291. TURN OFF ONTO RAMP. KEEP STRAIGHT TO STAY ON RAMP. TAKE RAMP ONTO I-384. ROAD NAME CHANGES TO US-44 [US-6]. BEAR RIGHT ONTO US-6 [HOPRIVER RD]. TURN RIGHT ONTO BURNAP BROOK RD. TURN RIGHT ONTO RIDGE RD. TURN RIGHT ONTO LOCAL ROAD. ARRIVE AT COVENTRY WEST CT.

DRAWING INDEX

SHEET #	SHEET DESCRIPTION	REV. #
T-1	TITLE SHEET	3
A-1	COMPOUND PLAN AND TOWER ELEVATION	3
A-2-A-4	EQUIPMENT DETAILS	3
S-1-S-4	STRUCTURAL DETAILS	3

A/E DOCUMENT REVIEW STATUS

TITLE	SIGNATURE	DATE
OWNER:		
R.F. ENGINEER:		
CONSTRUCTION MGR.:		
LEASING & ZONING:		
VERIZON WIRELESS:		

THE FOLLOWING PARTIES HEREBY APPROVE AND ACCEPT THESE DOCUMENTS AND AUTHORIZE THE CONTRACTOR TO PROCEED WITH THE CONSTRUCTION DESCRIBED HEREIN. ALL DOCUMENTS ARE SUBJECT TO REVIEW BY THE LOCAL BUILDING DEPARTMENT AND MAY IMPOSE CHANGES OR MODIFICATIONS.

DO NOT SCALE DRAWINGS

ALL DRAWINGS CONTAINED HEREIN ARE FORMATTED FOR 11x17. CONTRACTOR SHALL VERIFY ALL PLANS AND EXISTING DIMENSIONS AND CONDITIONS ON THE JOB SITE AND SHALL IMMEDIATELY NOTIFY THE ENGINEER IN WRITING OF ANY DISCREPANCIES BEFORE PROCEEDING WITH THE WORK OR BE RESPONSIBLE FOR SAME.



CALL CONNECTICUT ONE CALL
(800) 922-4455
CALL 3 WORKING DAYS
BEFORE YOU DIG!

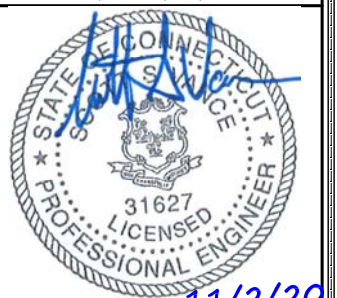


PROJECT NO: 135726.002.01
 CHECKED BY: MTJ

ISSUED FOR:

REV	DATE	DRWN	DESCRIPTION
A	10/18/19	STH	PERMITTING
0	12/17/19	STH	CONSTRUCTION
1	5/1/20	RMC	CONSTRUCTION
2	10/08/20	LHT	CONSTRUCTION
3	11/2/20	JTS	CONSTRUCTION

B&T ENGINEERING, INC.
 PEC.0001564
 Expires 2/10/21



IT IS A VIOLATION OF LAW FOR ANY PERSON, UNLESS THEY ARE ACTING UNDER THE DIRECTION OF A LICENSED PROFESSIONAL ENGINEER, TO ALTER THIS DOCUMENT.

SHEET NUMBER: **T-1** REVISION: **3**



verizon

400 FRIBERG PARKWAY
WESTBOROUGH, MA 01581
PH: (508) 330-3300

COVENTRY WEST CT

122 JONATHAN TRUMBULL HWY
ANDOVER, CT 06232
EXISTING MONOPOLE

PROJECT NO: 135726.002.01
CHECKED BY: MTJ

ISSUED FOR:

REV	DATE	DRWN	DESCRIPTION
A	10/18/19	STH	PERMITTING
0	12/17/19	STH	CONSTRUCTION
1	5/1/20	RMC	CONSTRUCTION
2	10/08/20	LHT	CONSTRUCTION
3	11/2/20	JTS	CONSTRUCTION

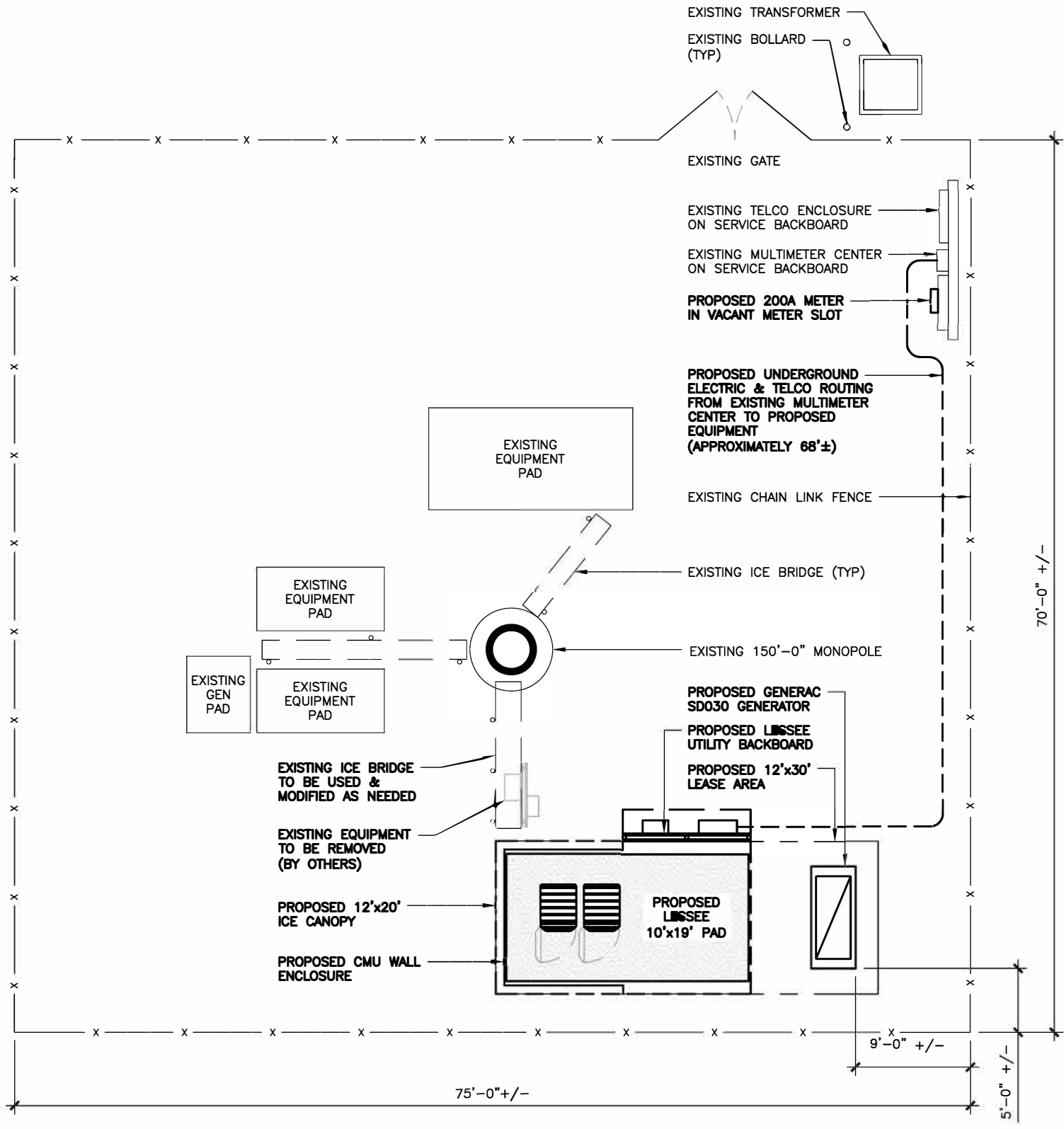
B&T ENGINEERING, INC.
PEC.0001564
Expires 2/10/21



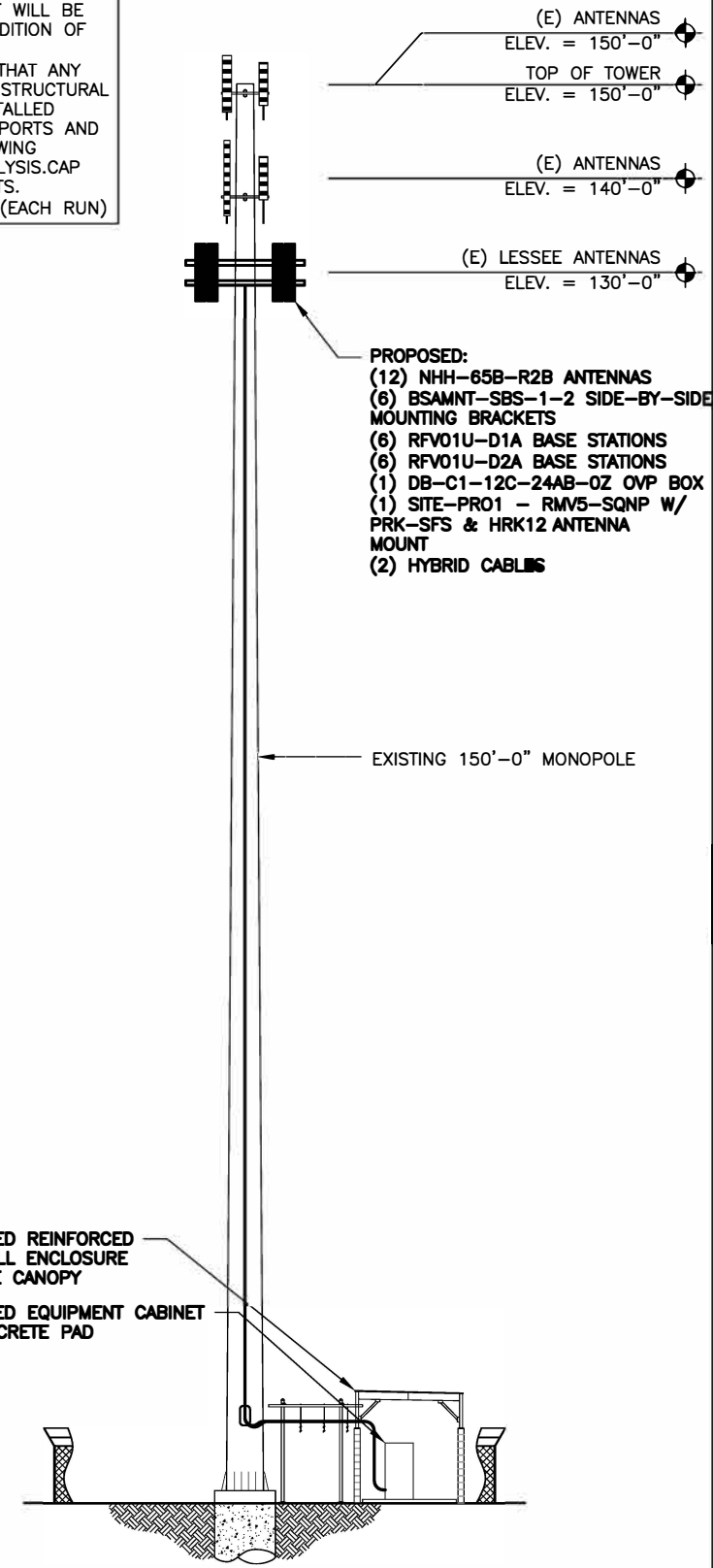
IT IS A VIOLATION OF LAW FOR ANY PERSON, UNLESS THEY ARE ACTING UNDER THE DIRECTION OF A LICENSED PROFESSIONAL ENGINEER, TO ALTER THIS DOCUMENT.

SHEET NUMBER: **A-1** REVISION: **3**

- NOTES:
1. CONTRACTOR TO VERIFY EXACT COAX AND ANTENNA INSTALLATION AND ANTENNA HEIGHT WITH LATEST RF DATA SHEETS PRIOR TO INSTALLATION.
 2. STRUCTURAL ANALYSIS DONE BY OTHERS.
 3. VERIZON SHALL PROVIDE A STRUCTURAL ANALYSIS OF THE TOWER PREPARED BY A LICENSED STATE STRUCTURAL ENGINEER CERTIFYING THAT THE EXISTING TOWER AND PROPOSED IMPROVEMENTS HAVE SUFFICIENT CAPACITY TO SUPPORT ALL NEW WORK THAT WILL BE DONE IN COMPLIANCE WITH THE CURRENT EDITION OF BUILDING CODES AND EIA/TIA CRITERIA. THE CONTRACTOR IS RESPONSIBLE TO CONFIRM THAT ANY AND ALL IMPROVEMENTS REQUIRED BY THE STRUCTURAL ANALYSIS CERTIFICATION ARE PROPERLY INSTALLED PRIOR TO THE ADDITION OF ANTENNAS, SUPPORTS AND APPURTENANCES PROPOSED ON THESE DRAWING OTHERWISE NOTED IN THE STRUCTURAL ANALYSIS.CAP AND WEATHERPROFF UNUSED ANTENNA PORTS.
 4. ESTIMATED HYBRIFLEX CABLE LENGTH: 180' (EACH RUN)



1 COMPOUND PLAN
SCALE: 0' 1' 4' 8' 16'

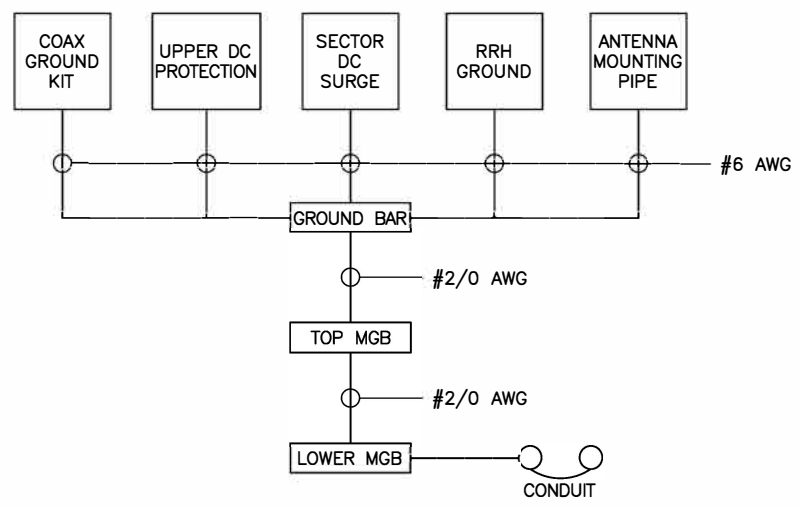


2 FINAL TOWER ELEVATION
SCALE: N.T.S.

135726_B42855_Andover North.dwg -- Sheet(A-1) -- User: mjonas -- Nov 02, 2020 -- 10:41am

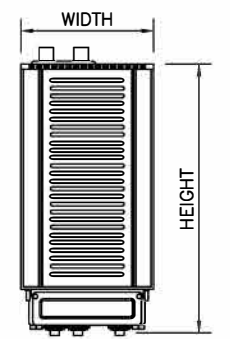
- NOTE:
1. INSTALL ALL EQUIPMENT, MOUNTING BRACKETS AND HARDWARE ACCORDING WITH MANUFACTURE'S RECOMMENDATIONS.
 2. GROUND DISTRIBUTION BOXES, MOUNTING PIPES AND RRRs IN ACCORDANCE WITH MANUFACTURE'S RECOMMENDATIONS.
 3. INSTALLED EQUIPMENT AND MOUNTING BRACKETS SHALL NOT INTERFERE WITH CLIMBING ACCESS NOR ANT INSTALLED SAFETY DEVICES.
 4. EQUIPMENT TO BE INSTALLED AT VERIZON'S RAD. CENTER IN ACCORDANCE WITH TOWER STRUCTURAL ANALYSIS (ANALYSIS BY OTHERS).

BASE STATIONS DIMENSIONS (INCHES)				
MODEL	HEIGHT	WIDTH	DEPTH	WEIGHT
RFV01U-D1A	15"	15"	10"	84.4 LBS
RFV01U-D2A	15"	15"	8.1"	70.3 LBS

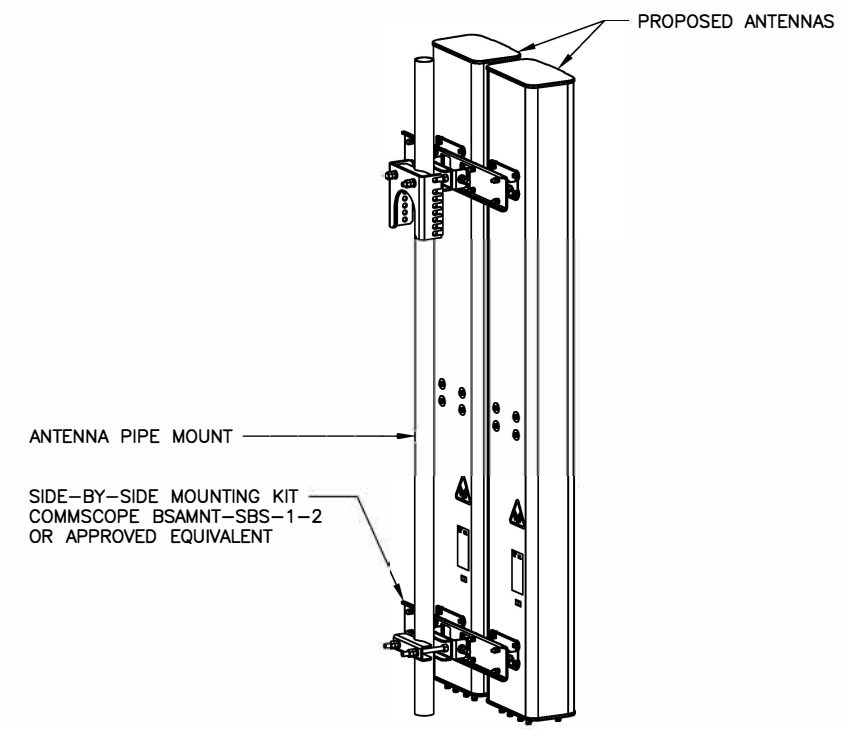


- NOTE:
1. BOND ANTENNA GROUNDING KIT CABLES TO TOP CIBE.
 2. BOND ANTENNA GROUNDING KIT CABLE TO BOTTOM CIBE.
 3. TYPICAL FOR ALL SECTORS.

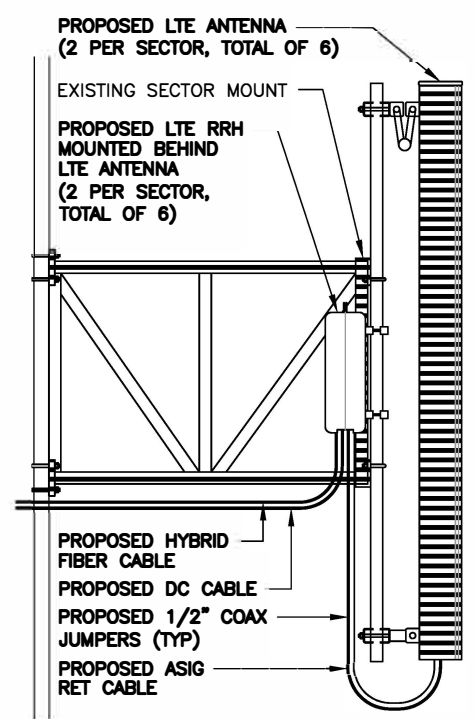
1 GROUNDING SCHEMATIC DIAGRAM
SCALE: N.T.S.



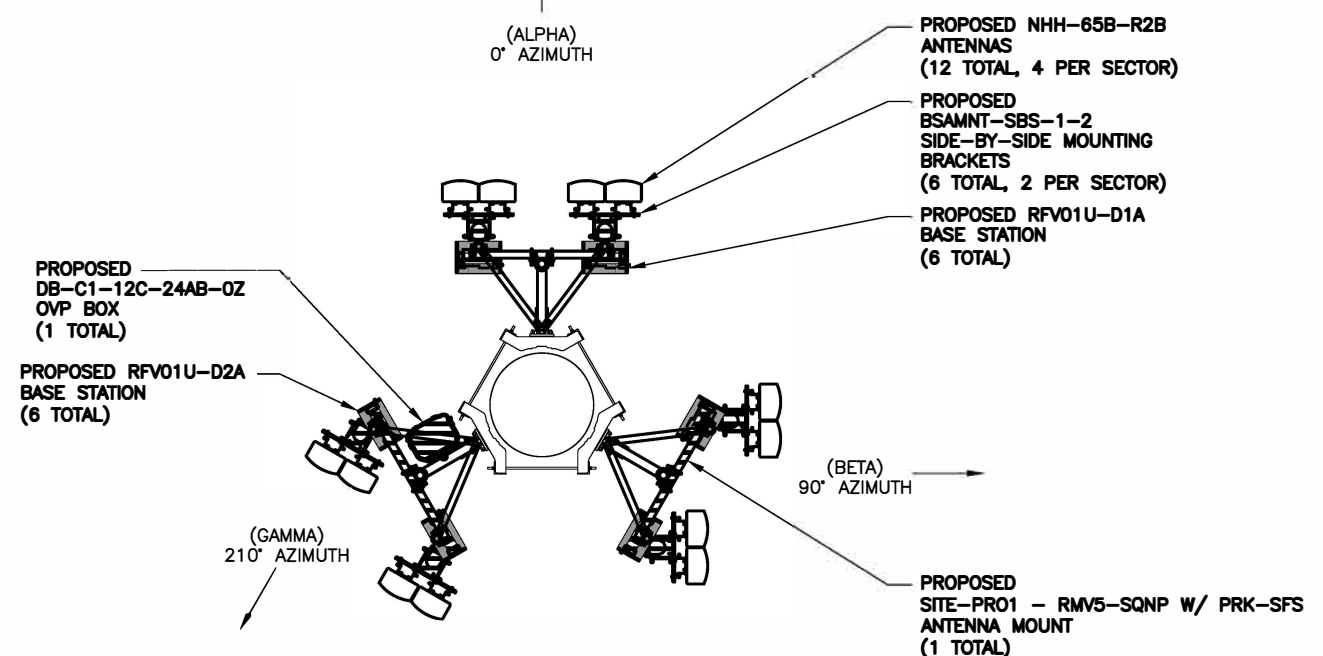
2 RRH SPECIFICATIONS
SCALE: N.T.S.



3 ANTENNA MOUNTING DETAIL
SCALE: N.T.S.



4 ANTENNA MOUNTING DETAIL
SCALE: N.T.S.



5 PROPOSED ANTENNA ORIENTATION
SCALE: N.T.S.



400 FRIBERG PARKWAY
WESTBOROUGH, MA 01581
PH: (508) 330-3300

COVENTRY WEST CT

122 JONATHAN TRUMBULL HWY
ANDOVER, CT 06232
EXISTING MONOPOLE

PROJECT NO: 135726.002.01
CHECKED BY: MTJ

ISSUED FOR:			
REV	DATE	DRWN	DESCRIPTION
A	10/18/19	STH	PERMITTING
0	12/17/19	STH	CONSTRUCTION
1	5/1/20	RMC	CONSTRUCTION
2	10/08/20	LHT	CONSTRUCTION
3	11/2/20	JTS	CONSTRUCTION

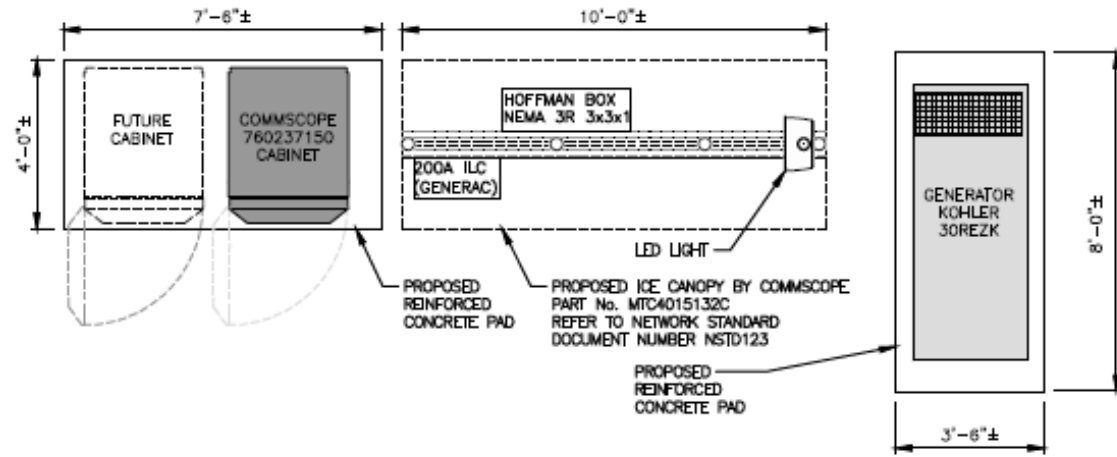
B&T ENGINEERING, INC.
PEC.0001564
Expires 2/10/21



IT IS A VIOLATION OF LAW FOR ANY PERSON, UNLESS THEY ARE ACTING UNDER THE DIRECTION OF A LICENSED PROFESSIONAL ENGINEER, TO ALTER THIS DOCUMENT.

SHEET NUMBER: A-2
REVISION: 3

135726_B42855_Andover North.dwg -- Sheet/A-2 -- User: m.jones -- Nov 02, 2020 -- 10:41am



1 EQUIPMENT PLAN
SCALE: N.T.S.



COOPER LIGHTING NFFLD NIGHT FALCON
NFFLD-A25-E-UNV-66-S-BK
SLIPFITTER MOUNT AND VANDAL SHIELD
MOUNT PER MANUFACTURER'S SPECIFICATIONS.

2 LED FLOOD LIGHT DETAIL
SCALE: N.T.S.

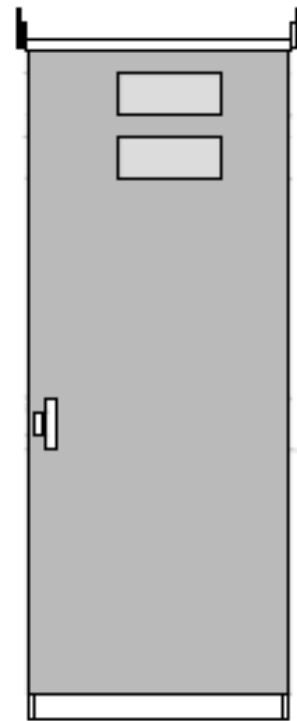


INTERMATIC WP1220C
TYPE: DOUBLE GANG
HINGE: VERTICAL
INSERT: WP217
DEPTH: 2-1/4"
COLOR: CLEAR
OR APPROVED EQUIVALENT

3 SWITCH DETAIL
SCALE: N.T.S.



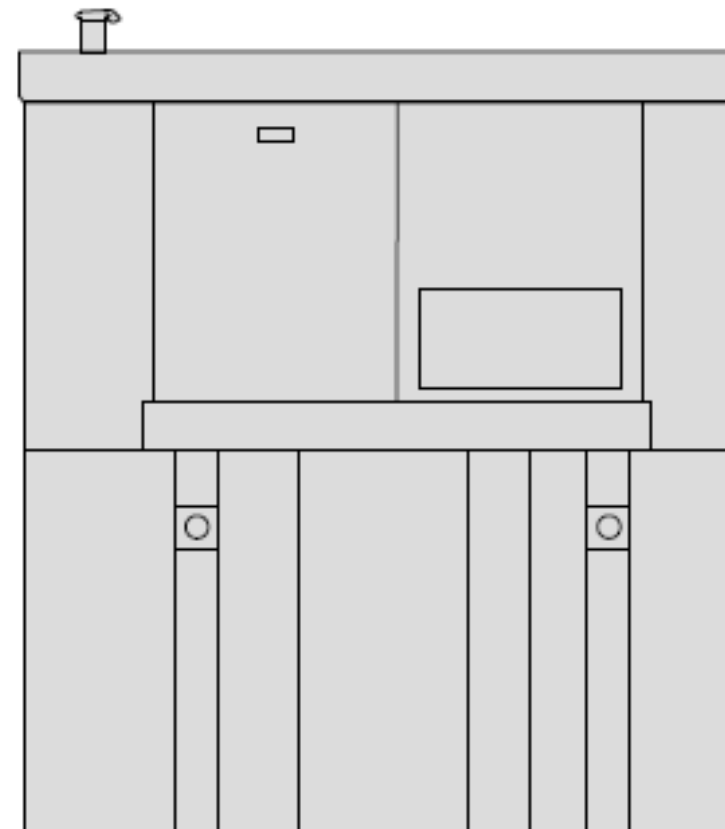
INTERMATIC FF6H
TIME CYCLE: 6 HOURS
SWITCH: SPST
HOLD: NO
OR APPROVED EQUIVALENT



SPECIFICATIONS:
MANUFACTURER: COMMSCOPE
PART NO: 760237150
SIZE: 86"x33"x44"

NOTE:
ANCHOR CABINET TO CONCRETE
PAD PER MANUFACTURER'S
RECOMMENDATIONS

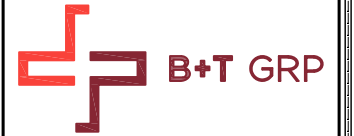
4 EQUIPMENT CABINET DETAIL
SCALE: N.T.S.



SPECIFICATIONS:
MANUFACTURER: KOHLER
PART NO: 30REZK
SIZE: 76.5"x32"x47"
WEIGHT: 1130 LBS

NOTE:
ANCHOR CABINET TO CONCRETE
PAD PER MANUFACTURER'S
RECOMMENDATIONS

5 GENERATOR DETAIL
SCALE: N.T.S.



verizon

400 FRIBERG PARKWAY
WESTBOROUGH, MA 01581
PH: (508) 330-3300

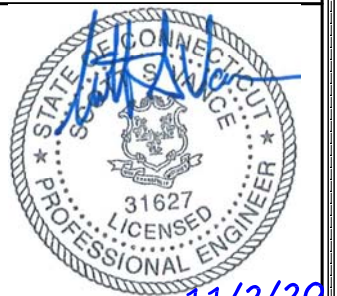
COVENTRY WEST CT

122 JONATHAN TRUMBULL HWY
ANDOVER, CT 06232
EXISTING MONOPOLE

PROJECT NO: 135726.002.01
CHECKED BY: MTJ

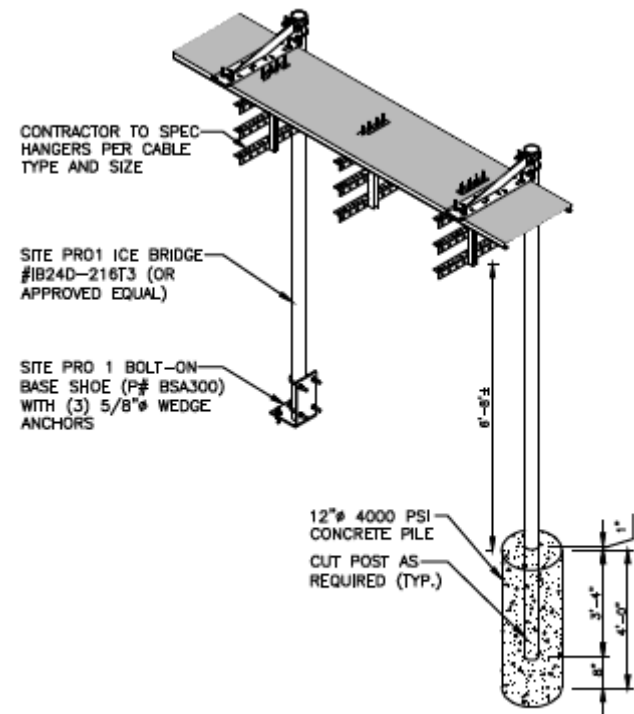
ISSUED FOR:			
REV	DATE	DRWN	DESCRIPTION
A	10/18/19	STH	PERMITTING
0	12/17/19	STH	CONSTRUCTION
1	5/1/20	RMC	CONSTRUCTION
2	10/08/20	LHT	CONSTRUCTION
3	11/2/20	JTS	CONSTRUCTION

B&T ENGINEERING, INC.
PEC.0001564
Expires 2/10/21

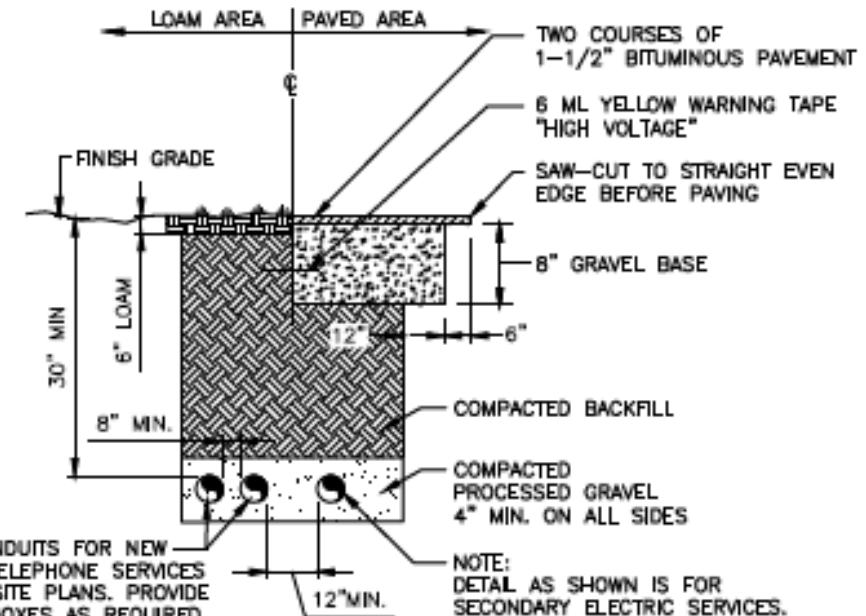


IT IS A VIOLATION OF LAW FOR ANY PERSON,
UNLESS THEY ARE ACTING UNDER THE DIRECTION
OF A LICENSED PROFESSIONAL ENGINEER,
TO ALTER THIS DOCUMENT.

SHEET NUMBER: **A-3** REVISION: **3**



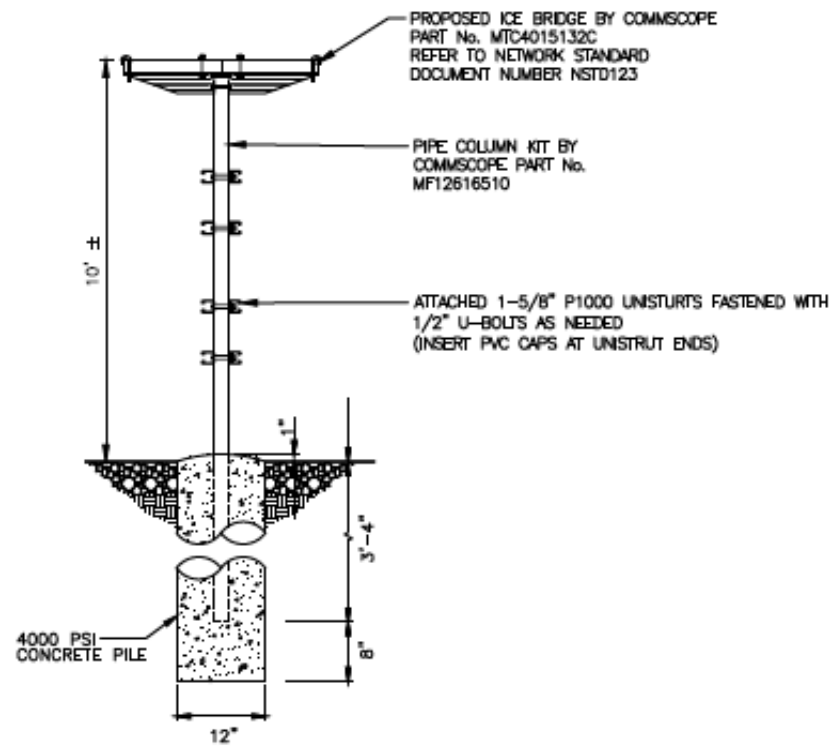
1 COAX ICE BRIDGE
SCALE: N.T.S.



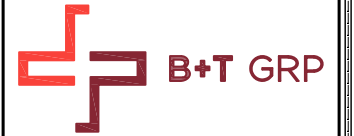
SCHEDULE 40 CONDUITS FOR NEW ELECTRICAL AND TELEPHONE SERVICES SEE UTILITY AND SITE PLANS. PROVIDE APPROVED PULL BOXES AS REQUIRED, AND COORDINATE INSTALLATION W/ ALL UTILITY COMPANIES FOR INTERFACING AT TERMINATION POINTS. PROVIDE FULL LENGTH PULL ROPES (TYP.).

NOTE: DETAIL AS SHOWN IS FOR SECONDARY ELECTRIC SERVICES. PRIMARY HIGH VOLTAGE SERVICE REQUIRES 4" CONCRETE ENCASEMENT.

2 TYPICAL DIRECT JOIN SERVICE BURIED CONDUIT DETAIL
SCALE: N.T.S.



3 ICE CANOPY DETAIL
SCALE: N.T.S.



verizon

400 FRIBERG PARKWAY
WESTBOROUGH, MA 01581
PH: (508) 330-3300

COVENTRY WEST CT

122 JONATHAN TRUMBULL HWY
ANDOVER, CT 06232
EXISTING MONOPOLE

PROJECT NO: 135726.002.01
CHECKED BY: MTJ

ISSUED FOR:

REV	DATE	DRWN	DESCRIPTION
A	10/18/19	STH	PERMITTING
0	12/17/19	STH	CONSTRUCTION
1	5/1/20	RMC	CONSTRUCTION
2	10/08/20	LHT	CONSTRUCTION
3	11/2/20	JTS	CONSTRUCTION

B&T ENGINEERING, INC.
PEC.0001564
Expires 2/10/21

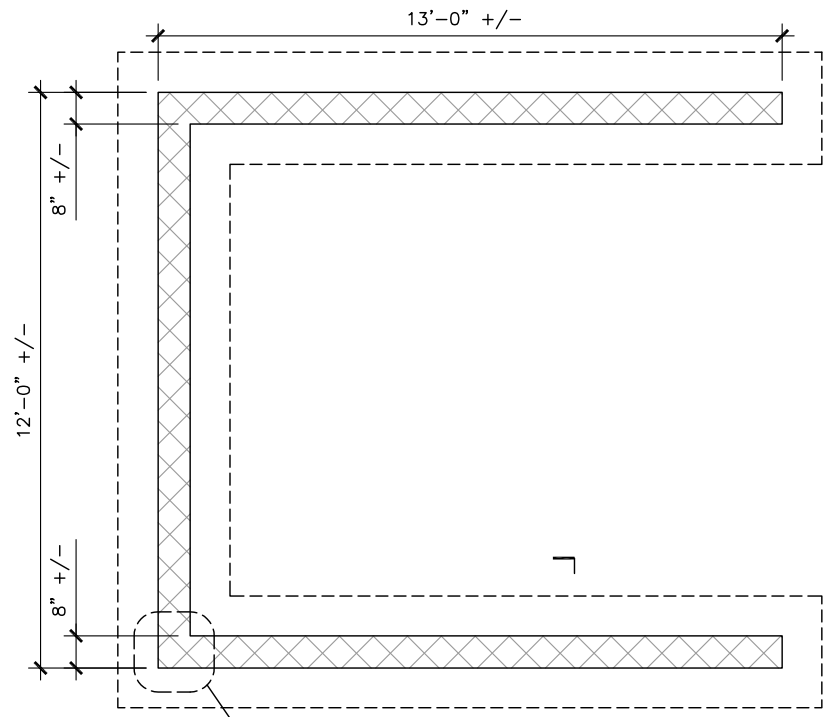


IT IS A VIOLATION OF LAW FOR ANY PERSON, UNLESS THEY ARE ACTING UNDER THE DIRECTION OF A LICENSED PROFESSIONAL ENGINEER, TO ALTER THIS DOCUMENT.

SHEET NUMBER: A-4
REVISION: 3

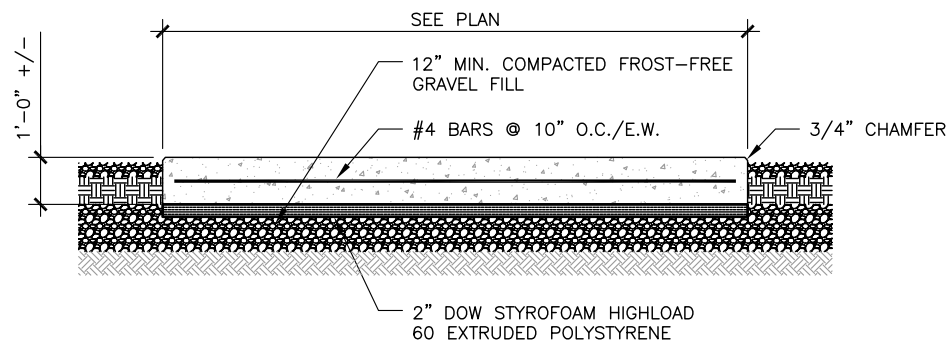
FOUNDATION NOTES & CONCRETE SPECIFICATIONS:

- FOUNDATION AREA SHALL BE EXCAVATED TO THE DEPTH AND DIMENSIONS SHOWN ON THE PLANS. EXISTING LEDGE AND ALL OTHER EXISTING UNSUITABLE MATERIAL SHALL BE REMOVED AND LEGALLY DISPOSED OF OFF-SITE. THE SUBGRADE SHALL BE ROLLED WITH A 1-TON, VIBRATORY, WALK-BEHIND ROLLER AT A SPEED OF LESS THAN 2 FPS, 6 PASSES MINIMUM, TO PROVIDE UNYIELDING SURFACE.
- UNDERCUT SOFT OR "WEAVING" AREAS A MINIMUM OF 12 INCHES DEEP. BACKFILL UNDERCUT AREA WITH FILL MEETING THE SPECIFICATIONS OF STRUCTURAL FILL.
- CONCRETE TO HAVE A MINIMUM 28 DAY COMPRESSIVE STRENGTH (f'c)=4000 psi. CONCRETE TO BE AIR ENTRAINED, DESIRED AIR CONTENT TO BE 6% (PLUS OR MINUS 2%)
- REINFORCING BAR TO BE ASTM A615 GRADE 60.
- WELDED WIRE FABRIC TO CONFORM TO THE REQUIREMENTS OF ASTM A185. WIRES FOR FABRIC TO CONFORM TO THE REQUIREMENTS OF ASTM A82.
- ALL REINFORCING TO HAVE MINIMUM CONCRETE COVER PER ACI SPECIFICATIONS.
- ALL CONCRETE MATERIALS AND WORKMANSHIP SHALL CONFORM TO LATEST EDITION OF ACI 318 AND APPLICABLE STATE BUILDING CODE.



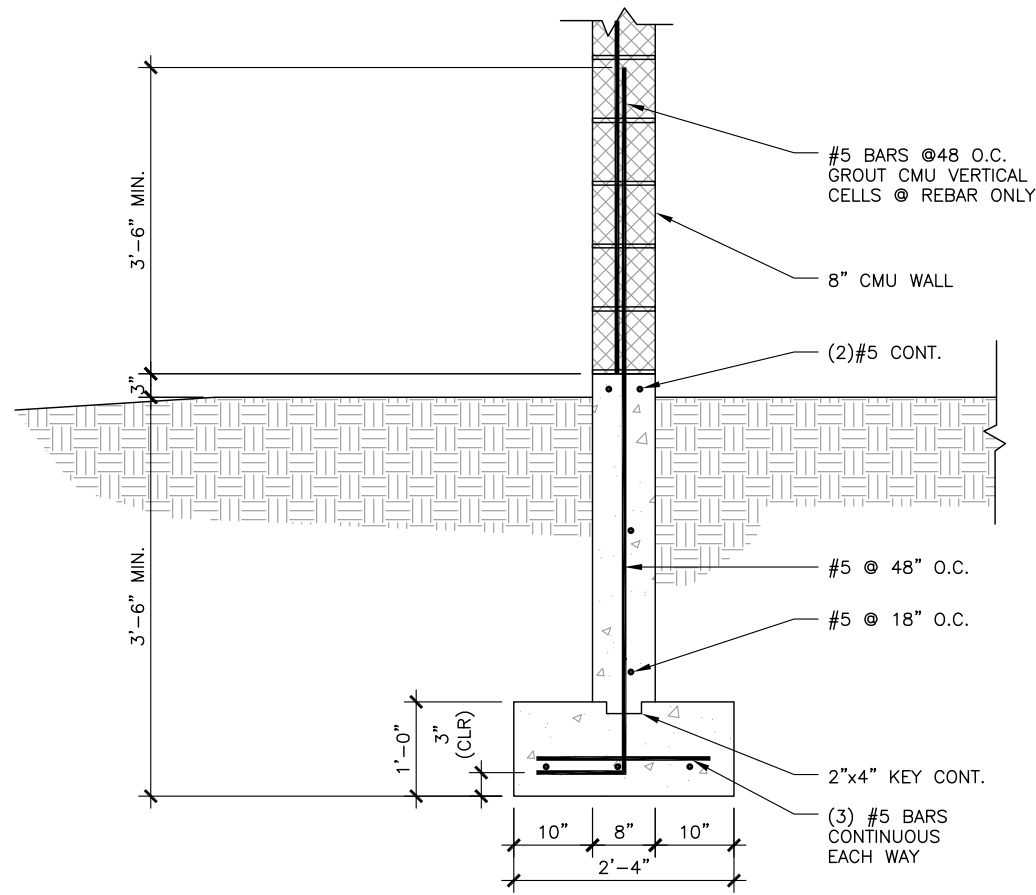
1 REINFORCED FOUNDATION PLAN

SCALE: 0' 1' 2' 4' 10'



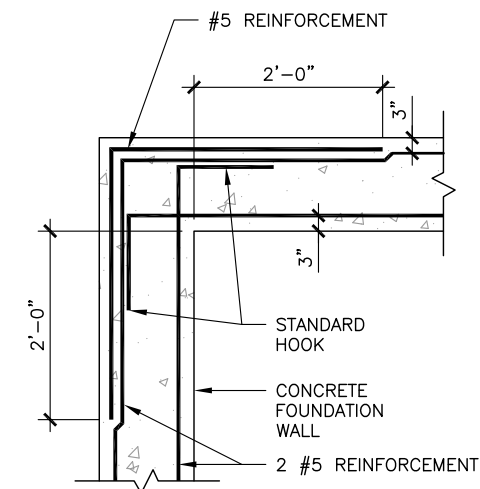
3 CONCRETE PAD DETAIL

SCALE: N.T.S.



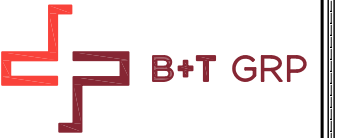
2 FOUNDATION DETAIL

SCALE: 0' 1' 2' 4' 8'



4 FOUNDATION CORNER DETAIL

SCALE: 0' 1' 2' 4' 8'



400 FRIBERG PARKWAY
WESTBOROUGH, MA 01581
PH: (508) 330-3300

COVENTRY WEST CT

122 JONATHAN TRUMBULL HWY
ANDOVER, CT 06232
EXISTING MONOPOLE

PROJECT NO: 135726.002.01

CHECKED BY: MTJ

ISSUED FOR:

REV	DATE	DRWN	DESCRIPTION
A	10/18/19	STH	PERMITTING
0	12/17/19	STH	CONSTRUCTION
1	5/1/20	RMC	CONSTRUCTION
2	10/08/20	LHT	CONSTRUCTION
3	11/2/20	JTS	CONSTRUCTION

B&T ENGINEERING, INC.
PEC.0001564
Expires 2/10/21



IT IS A VIOLATION OF LAW FOR ANY PERSON, UNLESS THEY ARE ACTING UNDER THE DIRECTION OF A LICENSED PROFESSIONAL ENGINEER, TO ALTER THIS DOCUMENT.

SHEET NUMBER:

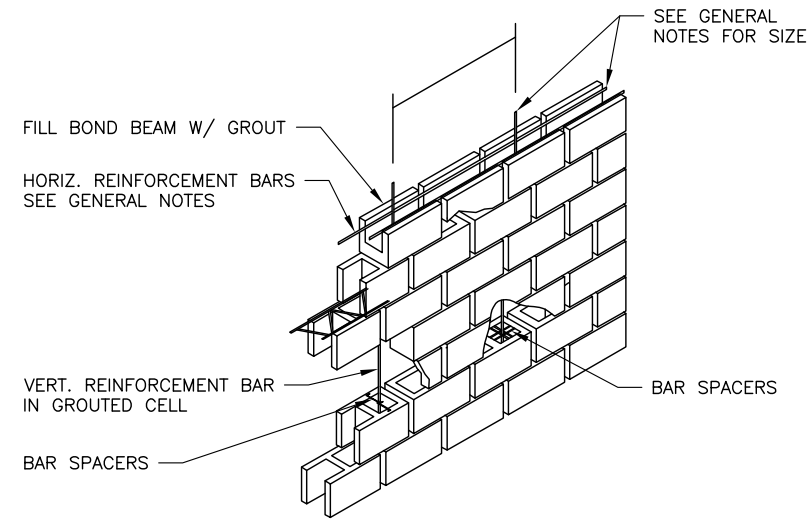
S-1

REVISION:

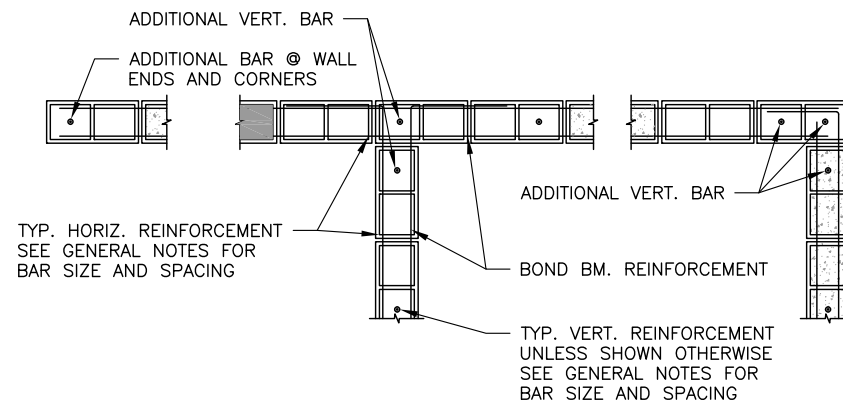
3

MASONRY:

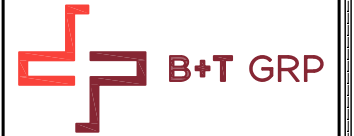
1. ALL CMU SHALL BE TWO-CELL TYPE UNITS EXCEPT LINTELS WHICH SHALL BE U-SHAPE UNITS.
2. BOND BEAM UNITS MAY BE U-SHAPED OR TWO-CELL OPEN BOTTOM LINTEL BLOCK.
3. ALL MASONRY BOND BEAMS, LINTELS, AND VERTICALLY GROUTED CELLS SHALL BE FILLED SOLIDLY WITH CONCRETE GROUT.
4. USING PEA GRAVEL IS PERMISSIBLE WITH SLUMP OF 8" TO 11", ULTIMATE CONCRETE GROUT STRENGTH TO BE 3,000 PSI. MAINTAIN 4'-0" MAXIMUM LIFT FOR WALL CONSTRUCTION.
5. BOND BEAMS AT CMU WALLS THAT ARE PERPENDICULAR TO EACH OTHER SHALL MEET AT THE SAME ELEVATION AND THE REINFORCING SHALL BE LAPPED AS REQUIRED.
6. MORTAL TYPE: ASTM C270, TYPE M OR S
7. PRIOR TO GROUTING CELLS, BARS AND CELLS MUST BE INSPECTED BY TESTING AGENCY.
8. MASONRY BLOCK CELLS CONTAINING VERTICAL REINFORCING, BOND BEAMS, AND CELLS WITH ANCHORS SHALL BE GROUTED SOLID, FILLING CELLS WITH MORTAR IS UNACCEPTABLE. THE COMPRESSIVE STRENGTH OF GROUT AT THE END OF 28 DAYS SHALL BE 3,000 PSI.
9. CONCRETE MASONRY UNITS SHOWN ON THE STRUCTURAL DRAWINGS SHALL BE ERECTED AS LOAD BEARING CONCRETE MASONRY WITH A MINIMUM PRISM STRENGTH OF $f'_m = 1,500$ PSI. INDIVIDUAL UNIT COMPRESSIVE STRENGTH OF 2,000 PSI AND FULL INSPECTION. COMPLY WITH NATIONAL CONCRETE MASONRY ASSOCIATION SPECIFICATIONS FOR THE DESIGN AND CONSTRUCTION OF LOAD BEARING CONCRETE MASONRY FOR MATERIALS, METHODS AND WORKMANSHIP NOT OTHERWISE SHOWN FOR THESE WALLS.
10. INSTALL VERTICAL REINFORCING BARS IN WALLS AS SHOWN ON DRAWINGS. ADD 2-#8 VERTICAL BARS AT EACH SIDE OF OPENINGS. POSITION ALL VERTICAL BARS WITH 9 GAUGE POSITIONERS (5/S-4) BY DUR-O-WAL, OR APPROVED EQUAL, LOCATED AT TOP OF FIRST COURSE. ONE PLACEMENT OF THE BARS. HORIZONTAL JOINT REINFORCEMENT SHALL BE EXTRA HEAVY LADDER TYPE AT 16 INCHES ON CENTER FOR 8 INCH WALLS.
11. ALIGN CORNERS OF UNITS VERTICALLY TO PROVIDE PROPER INSTALLATION OF VERTICAL REINFORCING BARS AND GROUTING. COMPLETELY FILL ALL CORES CONTAINING REINFORCING BARS AND BOND BEAMS WITH HIGH STRENGTH PORTLAND CEMENT GROUT. FILL ALL CORES OF UNITS SOLID WITH MORTAR AT WALL ANCHORS AND INSERTS.



1 TYP. MASONRY WALL REINFORCING - ISOMETRIC VIEW
SCALE: N.T.S.



2 TYP. MASONRY WALL REINFORCING DETAIL
SCALE: N.T.S.



verizon

400 FRIBERG PARKWAY
WESTBOROUGH, MA 01581
PH: (508) 330-3300

COVENTRY WEST CT

122 JONATHAN TRUMBULL HWY
ANDOVER, CT 06232
EXISTING MONOPOLE

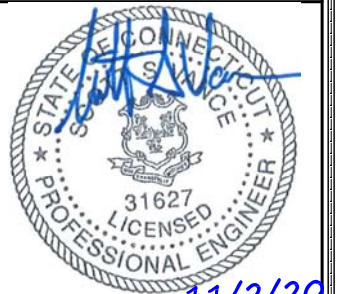
PROJECT NO: 135726.002.01

CHECKED BY: MTJ

ISSUED FOR:

REV	DATE	DRWN	DESCRIPTION
A	10/18/19	STH	PERMITTING
0	12/17/19	STH	CONSTRUCTION
1	5/1/20	RMC	CONSTRUCTION
2	10/08/20	LHT	CONSTRUCTION
3	11/2/20	JTS	CONSTRUCTION

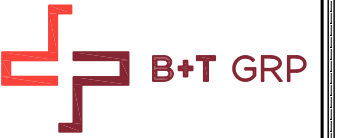
B&T ENGINEERING, INC.
PEC.0001564
Expires 2/10/21



IT IS A VIOLATION OF LAW FOR ANY PERSON, UNLESS THEY ARE ACTING UNDER THE DIRECTION OF A LICENSED PROFESSIONAL ENGINEER, TO ALTER THIS DOCUMENT.

SHEET NUMBER: REVISION:

S-1.1 | **3**



verizon

400 FRIBERG PARKWAY
WESTBOROUGH, MA 01581
PH: (508) 330-3300

COVENTRY WEST CT

122 JONATHAN TRUMBULL HWY
ANDOVER, CT 06232
EXISTING MONOPOLE

PROJECT NO: 135726.002.01
CHECKED BY: MTJ

ISSUED FOR:

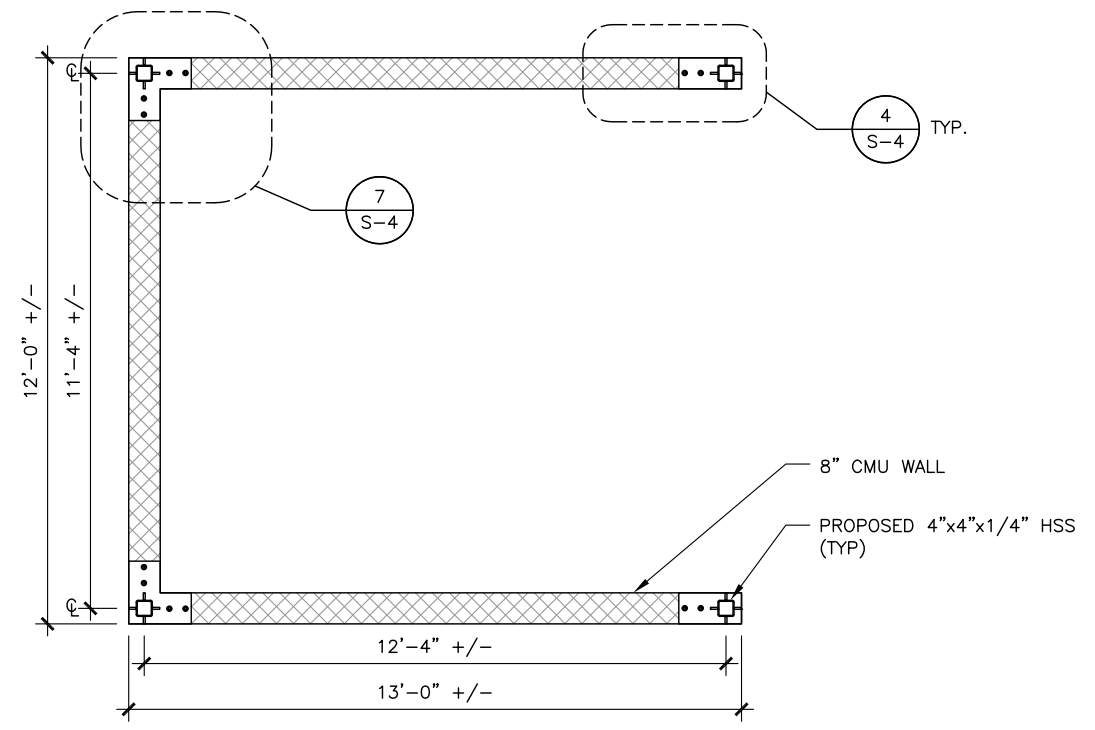
REV	DATE	DRWN	DESCRIPTION
A	10/18/19	STH	PERMITTING
0	12/17/19	STH	CONSTRUCTION
1	5/1/20	RMC	CONSTRUCTION
2	10/08/20	LHT	CONSTRUCTION
3	11/2/20	JTS	CONSTRUCTION

B&T ENGINEERING, INC.
PEC.0001564
Expires 2/10/21

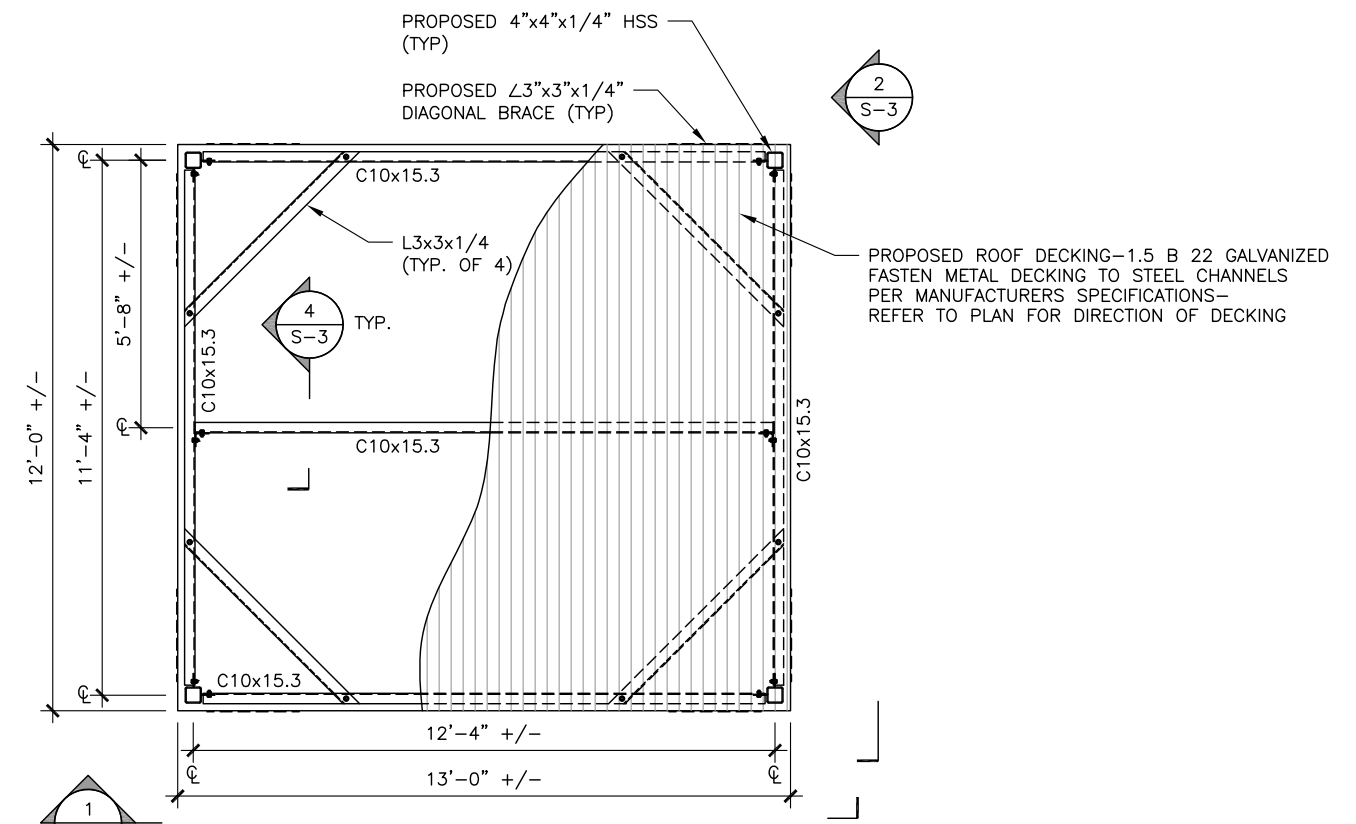


IT IS A VIOLATION OF LAW FOR ANY PERSON, UNLESS THEY ARE ACTING UNDER THE DIRECTION OF A LICENSED PROFESSIONAL ENGINEER, TO ALTER THIS DOCUMENT.

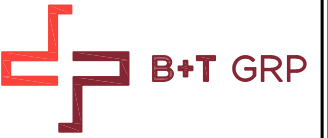
SHEET NUMBER: **S-2** REVISION: **3**



1 HSS COLUMN PLAN
SCALE: 0' 1' 2' 4' 8'



2 ICE CANOPY FRAME PLAN
SCALE: 0' 1' 2' 4' 8'

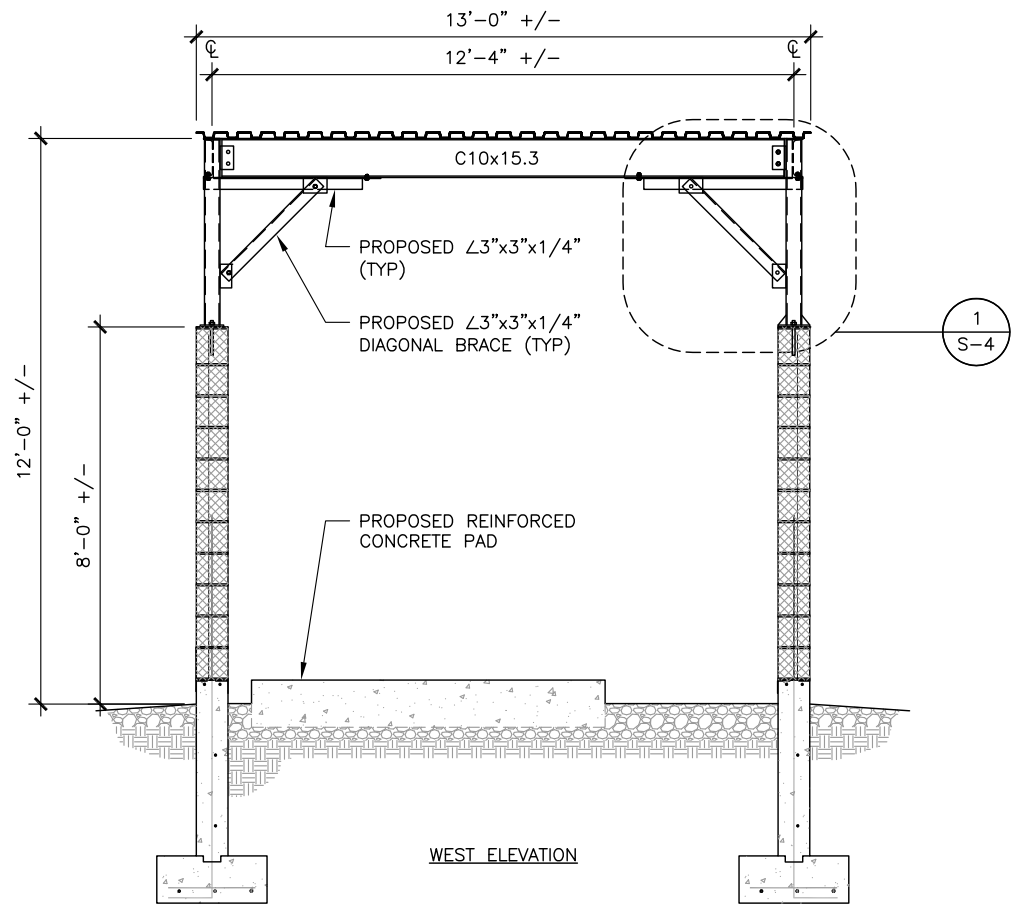


verizon

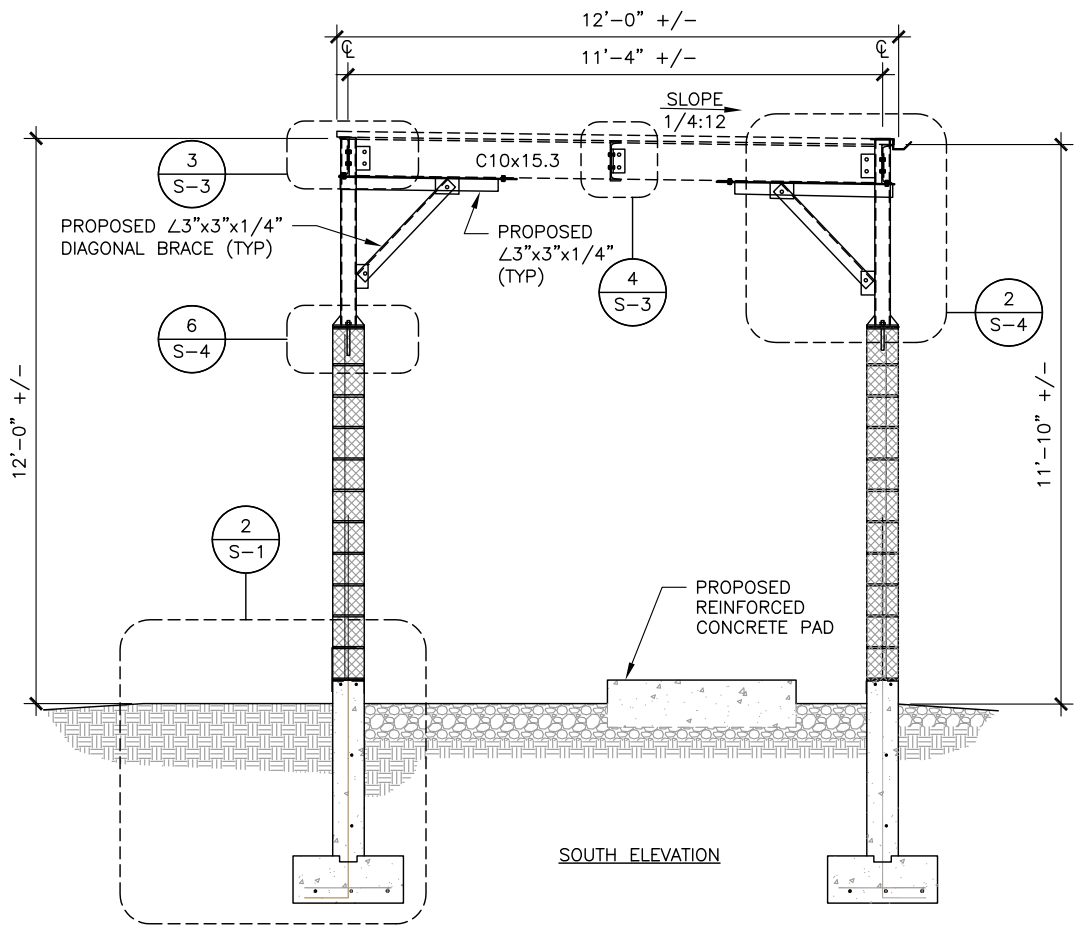
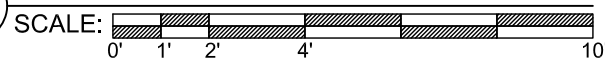
400 FRIBERG PARKWAY
WESTBOROUGH, MA 01581
PH: (508) 330-3300

COVENTRY WEST CT

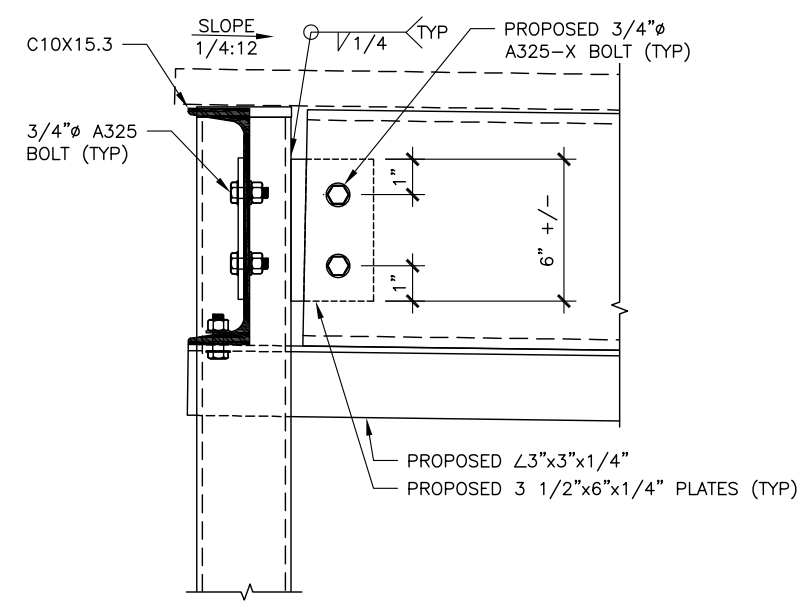
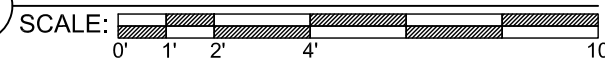
122 JONATHAN TRUMBULL HWY
ANDOVER, CT 06232
EXISTING MONOPOLE



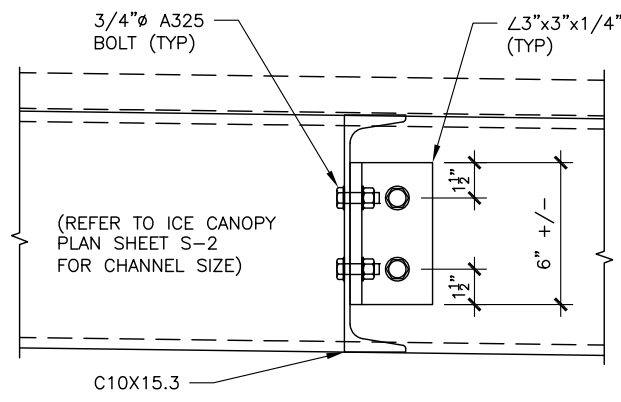
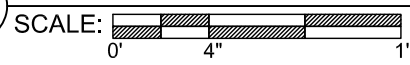
1 EQUIPMENT ENCLOSURE SECTION



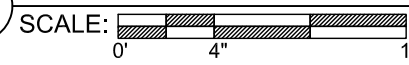
2 EQUIPMENT ENCLOSURE SECTION



3 CHANNEL TO CHANNEL CONNECTION



4 CHANNEL TO CHANNEL CONNECTION

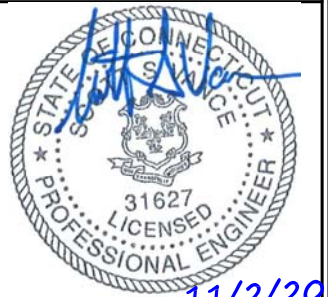


PROJECT NO: 135726.002.01
CHECKED BY: MTJ

ISSUED FOR:

REV	DATE	DRWN	DESCRIPTION
A	10/18/19	STH	PERMITTING
0	12/17/19	STH	CONSTRUCTION
1	5/1/20	RMC	CONSTRUCTION
2	10/08/20	LHT	CONSTRUCTION
3	11/2/20	JTS	CONSTRUCTION

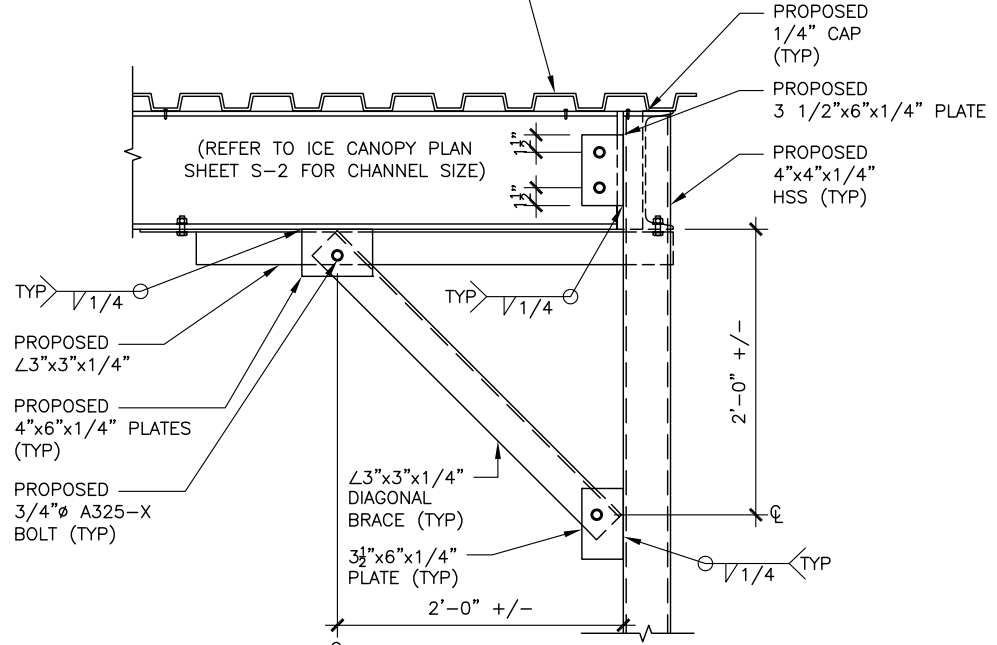
B&T ENGINEERING, INC.
PEC.0001564
Expires 2/10/21



IT IS A VIOLATION OF LAW FOR ANY PERSON, UNLESS THEY ARE ACTING UNDER THE DIRECTION OF A LICENSED PROFESSIONAL ENGINEER, TO ALTER THIS DOCUMENT.

SHEET NUMBER: **S-3**
REVISION: **3**

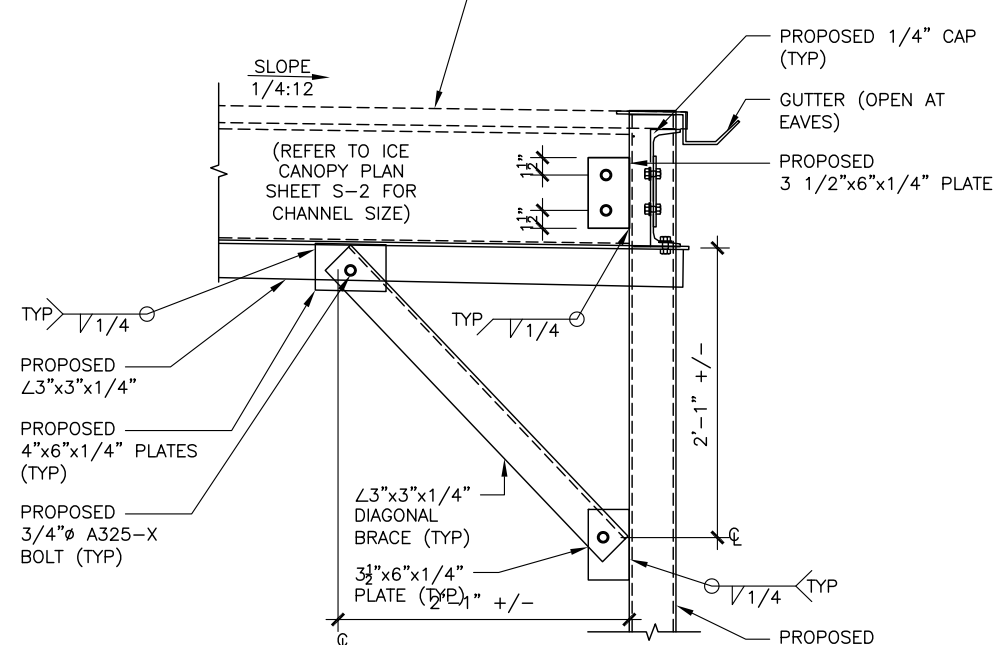
PROPOSED ROOF DECKING—1.5 B 22 GALVANIZED
FASTEN METAL DECKING TO STEEL CHANNELS
PER MANUFACTURER'S SPECIFICATIONS—
REFER TO PLAN FOR DIRECTION OF DECKING



1 ICE CANOPY ROOF DETAIL

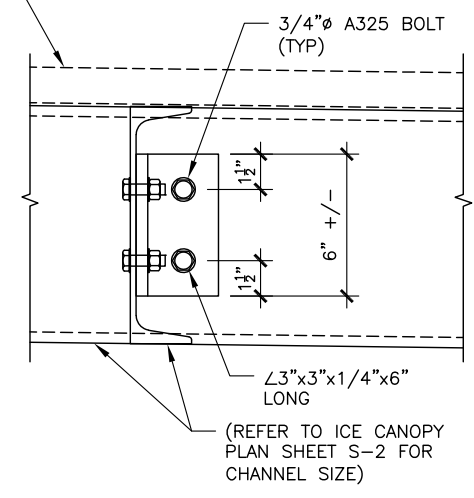
SCALE:

PROPOSED ROOF DECKING—1.5 B 22 GALVANIZED
FASTEN METAL DECKING TO STEEL CHANNELS
PER MANUFACTURER'S SPECIFICATIONS—
REFER TO PLAN FOR DIRECTION OF DECKING



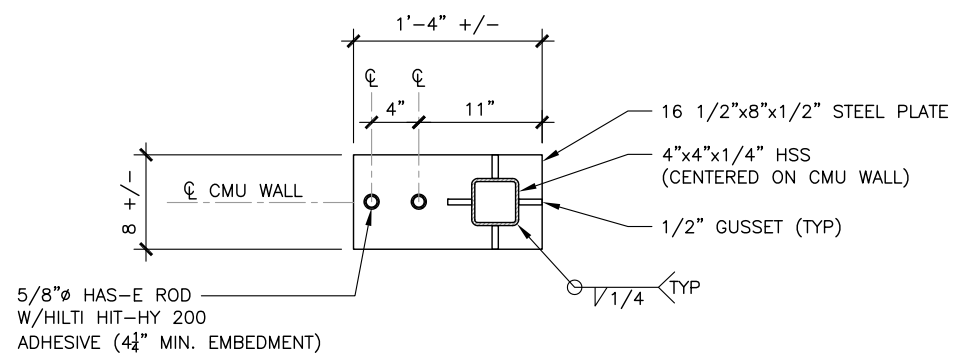
2 ICE CANOPY ROOF DETAIL

SCALE:



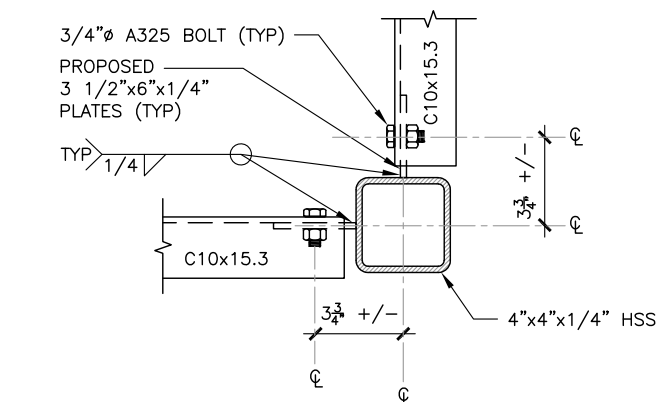
3 CHANNEL TO CHANNEL CONNECTION

SCALE:



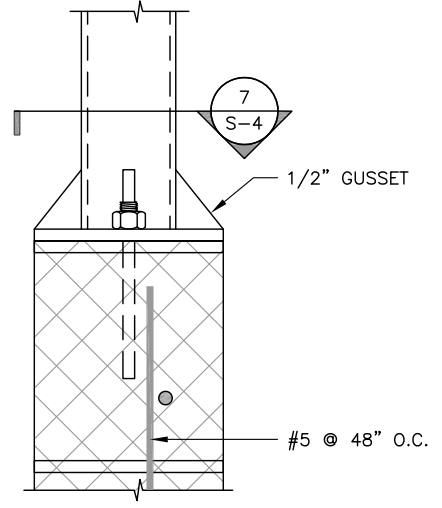
4 CANOPY PLATE DETAIL

SCALE:



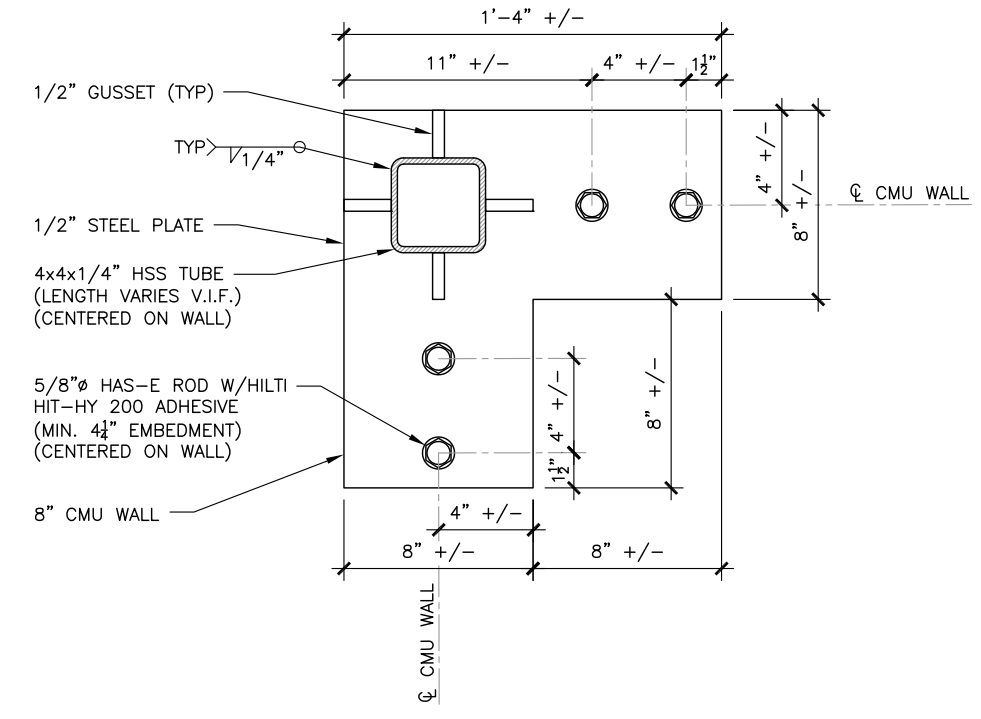
5 CHANNEL TO HSS CONNECTION DETAIL

SCALE:



6 ROOF EDGE DETAIL

SCALE:



7 BOTTOM PLATE DETAIL

SCALE:



400 FRIBERG PARKWAY
WESTBOROUGH, MA 01581
PH: (508) 330-3300

COVENTRY WEST CT

122 JONATHAN TRUMBULL HWY
ANDOVER, CT 06232
EXISTING MONOPOLE

PROJECT NO: 135726.002.01
CHECKED BY: MTJ

ISSUED FOR:

REV	DATE	DRWN	DESCRIPTION
A	10/18/19	STH	PERMITTING
0	12/17/19	STH	CONSTRUCTION
1	5/1/20	RMC	CONSTRUCTION
2	10/08/20	LHT	CONSTRUCTION
3	11/2/20	JTS	CONSTRUCTION

B&T ENGINEERING, INC.
PEC.0001564
Expires 2/10/21



IT IS A VIOLATION OF LAW FOR ANY PERSON,
UNLESS THEY ARE ACTING UNDER THE DIRECTION
OF A LICENSED PROFESSIONAL ENGINEER,
TO ALTER THIS DOCUMENT.

SHEET NUMBER: **S-4**
REVISION: **3**

135726_842856_Andover North.dwg - Sheet:S-4 - User: mjoines - Nov 02, 2020 - 10:42am