

STATE OF CONNECTICUT  
CONNECTICUT SITING COUNCIL

Petition of BNE Energy Inc. for a  
Declaratory Ruling for the Location,  
Construction and Operation of a 3.2 MW  
Wind Renewable Generating Project on  
New Haven Road in Prospect, Connecticut

Docket/Petition No. 980

March 8, 2011

**Amended Pre-filed Testimony of Calvin Goodwin**

The following pre-filed testimony supplements my pre-filed testimony filed on February 16, 2011, in connection with the above-captioned matter.

**6. Is there anything else that you would like for the Siting Council to consider?**

See my previous response. Attached is my daughter's power point presentation.

(Exhibit A).

# ***EXHIBIT A***

A black and white photograph of a forest path leading to a bright opening in the trees. The path is in the foreground, and the trees form a dense canopy. The light from the opening creates a strong contrast with the dark foliage.

# My Own Private *Walden*

● By: Catherine  
Goodwin

*"Love your life as poor as it is. You may perhaps have some pleasant, thrilling, glorious hours even in the poorhouse."*

- I chose this quote because you don't need to be in an extravagant place to be happy. This gazebo is my favorite place to be and I have many 'pleasant, thrilling, and glorious hours' even though it is only a simple place.



*"Wherever I sat I might live and the landscape radiated from me accordingly. What is a house but a sedes- a seat?"*

- I chose this quote because I often sit in these chairs and outside feels like home. Home seems to be a transitory word to explain where you feel you belong.



*"We will not be shipwrecked on a vain reality. Shall we with pains erect a heaven of blue glass over ourselves, though when it is done we shall be sure to gaze still at the true ethereal heaven far above, as if the former were not?..."*



- I chose this because I tend to block out what hurts. I go to the gazebo to think and to get away from my problems. In a way I face them in the end because being alone makes me think of what's important.

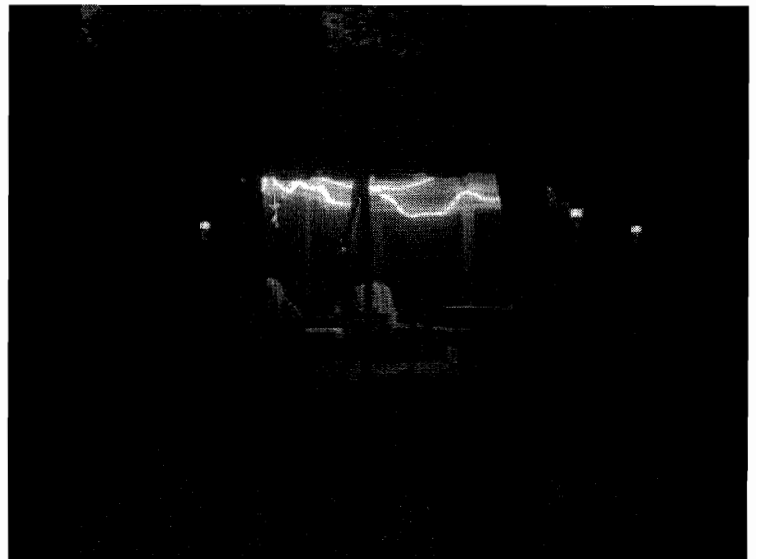
*"I do not see but a quiet mind may live as contentedly there,  
and have as cheering thoughts, as in a palace."*

- I chose this quote because when I am here I am content. I am calm and happy and probably wouldn't be as happy anywhere else.



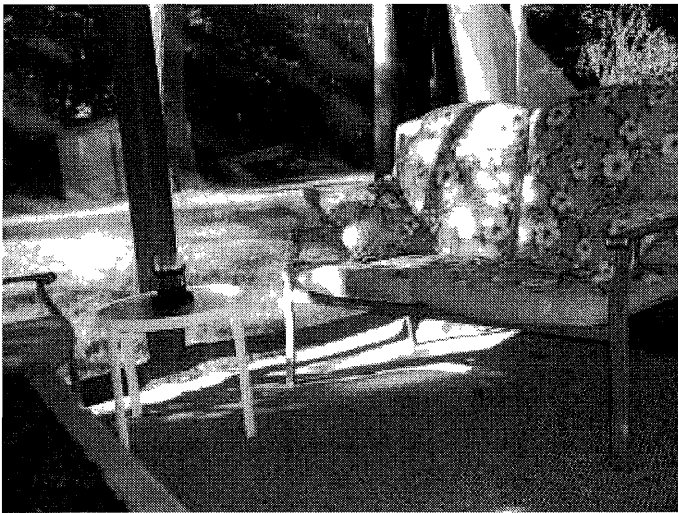
*"Things do not change, we change."*

- This quote describes this because whenever I come to this place it is the same no matter when or why I go. The only difference between the times is how I am feeling or how I have changed.





*"Who does not feel his faith in a resurrection and immortality strengthened by a hearing of this? Who knows what beautiful and winged life...may unexpectedly come forth...and enjoy it's perfect summer life at last!"*



- I chose this because nature has taught me you don't know the future. Something may come and unexpected things can happen and even here in my own private Walden, miracles came for me.

**The End**

