

# **EXHIBIT E**



**State Historic  
Preservation Office**



October 18, 2012

Don Lussier, PE, LEED AP  
Project Manager  
Fuss & O'Neill, Inc.  
146 Hartford Road  
Manchester, CT 06040

Subject: Proposed Somers Solar Center, 488 South Road, Somers, CT

Dear Mr. Lussier:

The Connecticut State Historic Preservation Office (SHPO) has reviewed the revised proposal for the installation of approximately 31,000 solar panels in four separate field arrays on roughly 50 acres of the subject property. Although relatively little ground disturbance is anticipated from grading of the site for drainage improvements, the solar arrays will include solar tracking systems that require substantial foundations. Several gravel roads will be constructed within the property to provide access for maintenance of the new facilities and equipment. The access road construction is anticipated to require disturbance of only the uppermost 0.5 – 1.0 feet of the existing soils on the site.

SHPO notes that there are no known archaeological resources located within the project area, however, we are aware of no professional archaeological surveys that have been conducted within or adjacent to 488 South Road. Although the environmental setting of the property suggests that it may once have been sensitive for Native American archaeological resources, previous land use have very likely disturbed or destroyed any deposits or features associated with the ancient use of the landscape. As indicated in the materials you submitted to our office, the area of proposed construction has been subject to extensive sand and gravel quarrying. Based on SHPO's review of aerial surveys dating between 1990 and 2012, it appears that unlikely that any substantially intact remnants of the natural soils remain within the area of anticipated ground disturbance. It is our opinion that this project has a very low potential to affect any intact archaeological resource and believe that archaeological survey of the property is not warranted. SHPO further notes that an existing historic house on the property will not be altered during the construction of the proposed facilities. Views of the solar field arrays from the historic house will be substantially screened by existing vegetation, barns, silos, and other out-buildings. Based on the information provided to our office, it is SHPO's opinion that no historic properties will be affected by this project.

SHPO appreciates the opportunity to comment on this project. This comment is provided in accordance with the Connecticut Environmental Policy Act. For further information please contact me at (860) 256-2764 or Daniel.Forrest@ct.gov.

Sincerely,

Daniel T. Forrest  
Deputy State Historic Preservation Officer



## FUSS & O'NEILL

October 9, 2012

Dr. Daniel Forrest  
State Historic Preservation Office  
One Constitution Plaza  
Hartford, CT 06103

RE: Request for Archeological Resources Review  
Proposed Somers Solar Center  
488 South Road, Somers, CT

Dear Dr. Forrest:


This letter has been prepared on behalf of our client, HelioSage, LLC, in order to request your office's review of the increased scope for the proposed Somers Solar Center for potential impacts to archaeological resources. Since our previous request in May of this year, HelioSage, LLC has added an additional 20 acres of open farm land to their project area thus adding approximately 9,200 solar panels. The additional 20 acres will become the fourth array on the site, referred to as array D.


HelioSage, LLC is proposing to construct a photovoltaic renewable energy system to the 95 acres of open farm land located at 488 South Road in Somers, Connecticut (Figure 1). The project includes installing approximately 31,000 solar panels over 50 acres of the site in four separate array fields. These arrays are labeled A, B, C and D on the enclosed *Proposed Site Rendering* (Figure 2). The project is one of two solar developments selected by the Connecticut Department of Energy and Environmental Protection (CTDEEP) on December 23, 2011. HelioSage is currently preparing a Petition to the Connecticut Siting Council for a Declaratory Ruling for Renewable Energy Facility under Connecticut General Statutes 16-50k(a).

Only minimal surface grading will be required to achieve positive drainage on the site. However, some disturbance is anticipated because the project will include the use of solar tracking systems. These Systems use concrete foundations up to six feet deep to support a movable rack, which tracks the sun's movement through the sky. In addition the construction of proposed gravel maintenance access roads will entail removal of approximately six to twelve inches of topsoil. The project site was previously mined for sand and gravel. Historic aerial photographs from 1990 and 2006 showing the quarry operation in progress are enclosed.

If you have any questions, please contact either of the undersigned at (860) 646-2469. Thank you.

Sincerely,

  
Donald R. Lussier, P.E., LEED AP  
Project Manager

  
for Craig M. Lapinski, P.E., LEED AP  
Associate | Project Director

146 Hartford Road  
Manchester, CT  
06040  
t 860.646.2469  
800.286.2469  
f 860.533.5143

www.fando.com  
Connecticut  
Massachusetts  
Rhode Island  
South Carolina

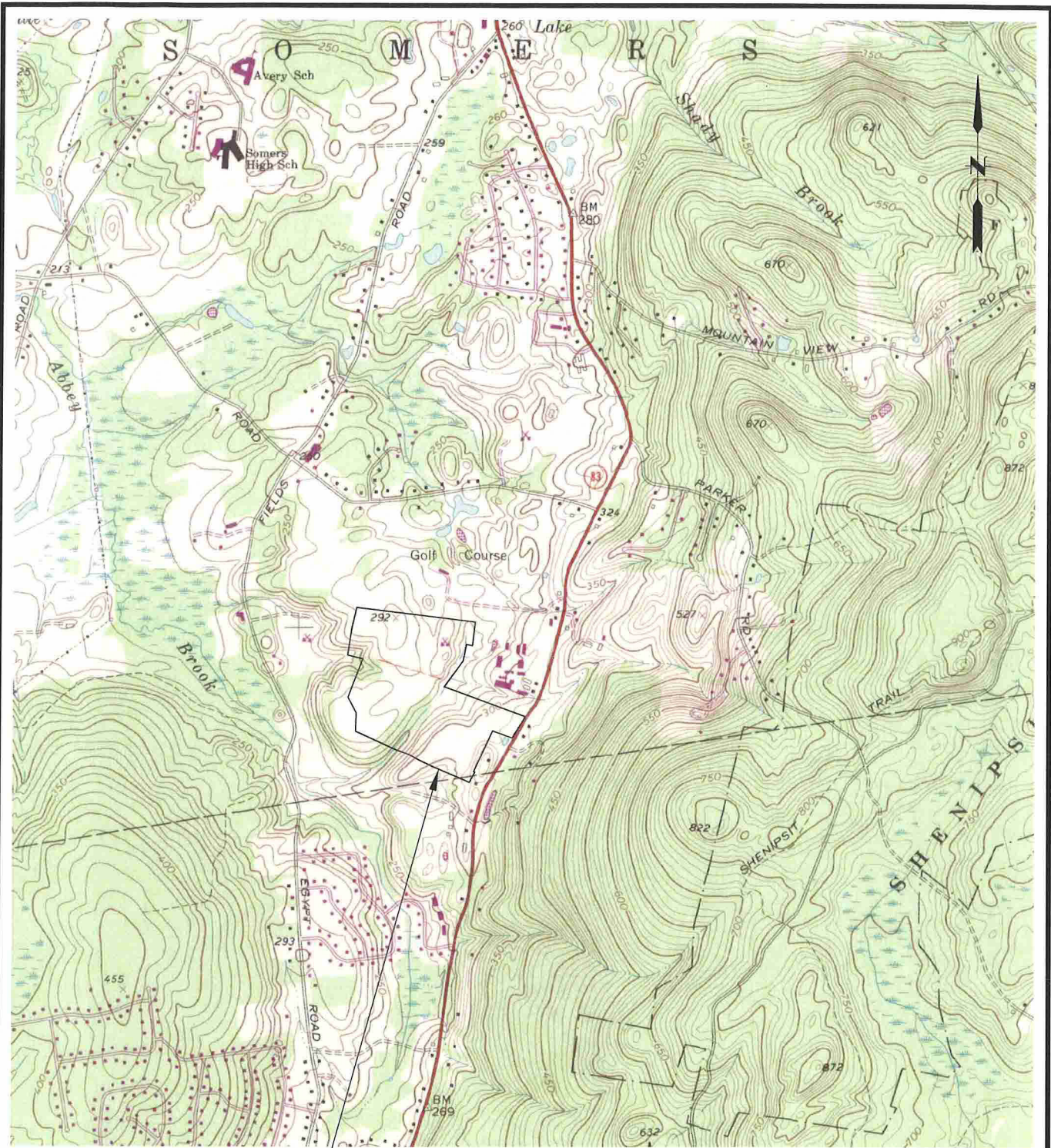


Dr. Daniel Forrest  
October 9, 2012  
Page 2

c: Nelson Teague, HelioSage, LLC  
Joey Lee Miranda, Robinson & Cole, LLP

Enclosures: Figure 1 – Site Location Map  
Figure 2 – Proposed Site Rendering  
Historic Aerial Photographs

File Path: J:\DWG\IP\2012\0085\A20\Civil\Plan\2012\0085A20\_LOC01.dwg Layout: FIG 1 Plotted: Wed, October 03, 2012 - 12:13 PM User: STEPHANIE BERMAN  
 Plotter: DWG TO PDF FC3 CTB File: FO 2008 COLOR (HALF).CTB  
 LAYER STATE



APPROXIMATE SITE LOCATION

MAP REFERENCE  
 THIS MAP WAS PREPARED FROM THE FOLLOWING 7.5 MINUTE SERIES TOPOGRAPHICAL MAP: ELLINGTON QUADRANGLE CONNECTICUT, 1967 PHOTOREVISED 1984.

SCALE:	
HORIZ.: 1" = 2000'	
VERT.:	
DATUM:	
HORIZ.:	
VERT.:	
0 1000 2000	
GRAPHIC SCALE	



**FUSS & O'NEILL**  
 146 HARTFORD ROAD  
 MANCHESTER, CONNECTICUT 06040  
 860.646.2469  
 www.fando.com

HELIOSAGE, LLC  
 PROJECT LOCATION MAP  
 SOMERS SOLAR CENTER

SOMERS

CONNECTICUT

PROJ. No.: 20120085.A20  
 DATE: 10/03/12

**FIGURE 1**



Proposed Site Rendering

FIGURE 2 September 28, 2012



Photo 1: Google Earth image dated 9/30/2006 showing gravel excavation in the area of “Array A”



Photo 2: Google Earth image dated 4/22/1990 showing gravel excavation in the area of “Array B & C”



# FUSS & O'NEILL

May 4, 2012

Dr. Daniel Forrest  
State Historic Preservation Office  
One Constitution Plaza  
Hartford, CT 06103

RE: Request for Archeological Resources Review  
Proposed Somers Solar Center  
488 South Road, Somers, CT

Dear Dr. Forrest:

This letter has been prepared on behalf of our client, HelioSage, LLC, in order to request your office's review of the proposed Somers Solar Center for potential impacts to archaeological resources.

HelioSage, LLC is proposing to construct a photovoltaic renewable energy system on 75 acres of open farm land located at 488 South Road in Somers, Connecticut (Figure 1). The project includes installing approximately 21,800 solar panels over 30 acres of the site in three separate array fields. These arrays are labeled as A, B, and C on the enclosed *Proposed Site Rendering* (Figure 2). The project is one of two solar developments selected by the Connecticut Department of Energy and Environmental Protection (CTDEEP) on December 23, 2011. HelioSage is currently preparing a Petition to the Connecticut Siting Council for a Declaratory Ruling for Renewable Energy Facility under Connecticut General Statutes 16-50k(a).

Only minimal surface grading will be required to achieve positive drainage on the site. However, some disturbance is anticipated because the project will include the use of solar tracking systems. These Systems use concrete foundations up to six feet deep to support a movable rack, which tracks the sun's movement through the sky. In addition the construction of proposed gravel maintenance access roads will entail removal of approximately six to twelve inches of topsoil.

If you have any questions, please contact either of the undersigned at (860) 646-2469. Thank you.

146 Hartford Road  
Manchester, CT  
06040  
t 860.646.2469  
800.286.2469  
f 860.533.5143

www.fando.com

Connecticut  
Massachusetts  
Rhode Island  
South Carolina

Sincerely,

Donald R. Lussier, P.E., LEED AP  
Project Manager

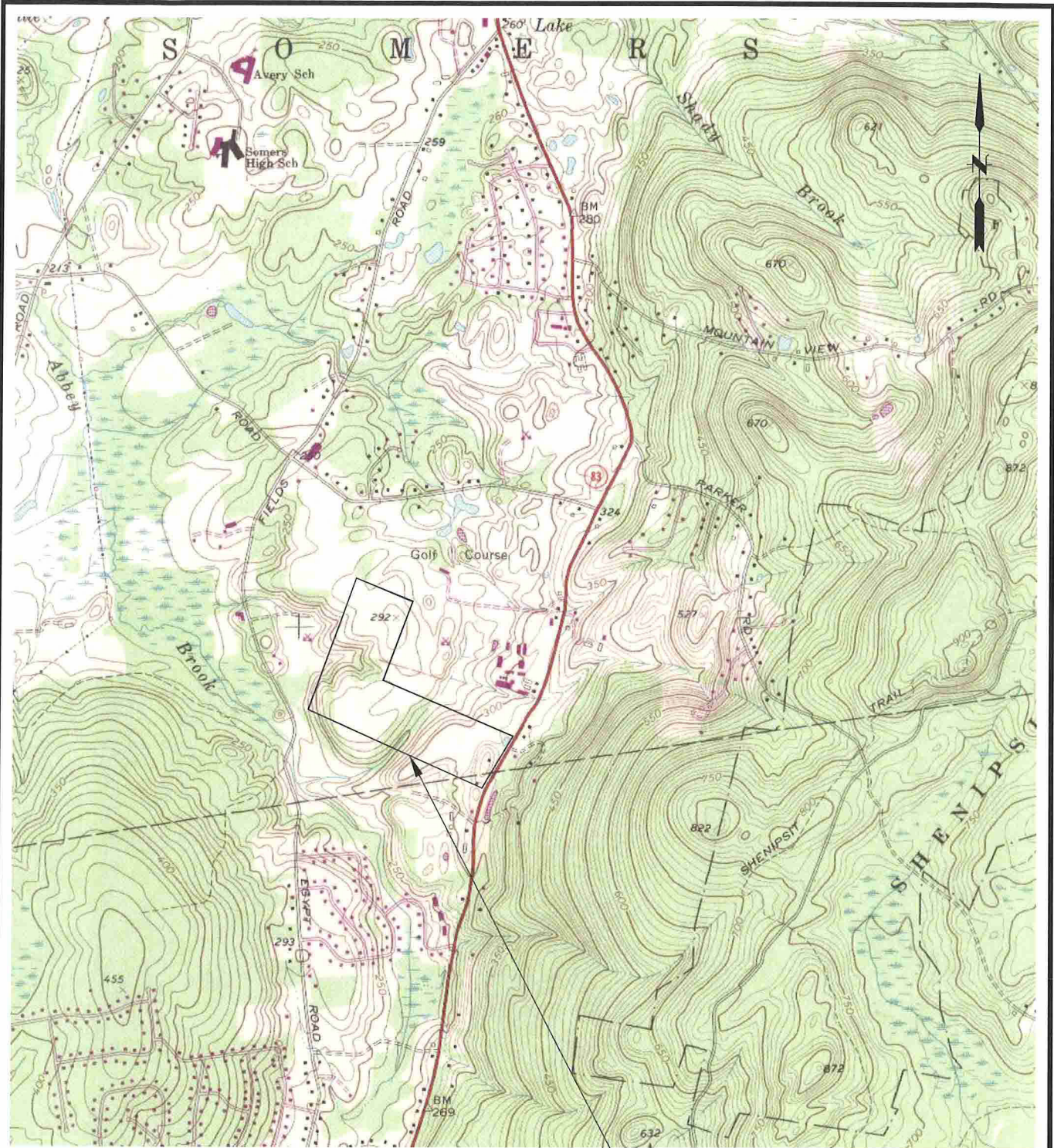
Craig M. Lapinski, P.E., LEED AP  
Associate | Project Director

c: Nelson Teague, HelioSage, LLC  
Joey Lee Miranda, Robinson & Cole, LLP

Enclosures: Figure 1 – Site Location Map  
Figure 2 – Proposed Site Rendering



File Path: J:\DWG\2012\08\5A20\Civil\Plan\2012085A20\_LOC01.dwg  
 Layer State: LAYER STATE:  
 Layout: FIG 1 Plotted: Fri, April 27, 2012 - 3:02 PM User: STEPHANIE BERMAN  
 Plotter: ACROLOT.PC3 CTB File: FO 2008 COLOR (HALF).CTB



APPROXIMATE SITE LOCATION

**MAP REFERENCE**  
 THIS MAP WAS PREPARED FROM THE FOLLOWING 7.5 MINUTE SERIES TOPOGRAPHICAL MAP:  
 ELLINGTON QUADRANGLE CONNECTICUT, 1967 PHOTOREVISED 1984.

<b>SCALE:</b>	
HORZ.:	1" = 2000'
VERT.:	
<b>DATUM:</b>	
HORZ.:	
VERT.:	
GRAPHIC SCALE	

**FUSS & O'NEILL**  
 146 HARTFORD ROAD  
 MANCHESTER, CONNECTICUT 06040  
 860.646.2469  
 www.fando.com

HELIOSAGE, LLC  
 PROJECT LOCATION MAP  
 SOMERS SOLAR CENTER  
 SOMERS CONNECTICUT

PROJ. No.: 20120085.A20  
 DATE: 04/27/12  
**FIGURE 1**



FUSS & O'NEILL



HELIO SAGE

# Somers Solar Center

Somers, CT



Proposed Site Rendering

FIGURE 2 April 16, 2012