

**STATE OF CONNECTICUT
CONNECTICUT SITING COUNCIL**

In re:

The United Illuminating Company application for a Certificate of Environmental Compatibility and Public Need for the construction, maintenance, and operation of a proposed 115-kV/13.8-kV electric substation and associated facilities located at 3-7 Wildflower Lane, Trumbull, Connecticut.

Docket 317
October 26, 2006

PRE-FILED TESTIMONY OF PAUL LUSITANI

Q: Please state your name and position.

A: My name is Paul A. Lusitani. I am an Assistant Project Engineer III with Clough Harbour & Associates LLP.

Q: What is Clough Harbour & Associates?

A: Clough Harbour & Associates LLP is a full service engineering firm with an office located in Rocky Hill, CT and additional offices throughout the eastern United States.

Q: Please state your qualifications.

A: I have six years of experience overseeing or completing visual analysis studies for telecommunications towers. The methodology utilized for telecommunications towers is identical to the methodology utilized for this project.

Q: Please describe the site.

A: The project site is located in the Town of Trumbull. This area of the property is wooded along its perimeter bordering United Illuminating Company transmission lines. The property is between Oakridge Road. and Rockyridge Road

Q: What services did you perform?

A: Clough Harbour & Associates LLP prepared a visual resource investigation which I oversaw to determine the potential visibility of an alternative site to 3-7 Wildflower Lane, Trumbull, Connecticut.

Q: Please describe the methodology used in the visual resource investigation for the proposed 6D site.

A: Prior to the field investigation, a preliminary mapping was developed to identify select locations which would have potential interest to the viewing public. Including but not limited to; public schools, parks, and libraries, and cemeteries.

On October 13, 2006 Clough Harbour & Associates LLP conducted a field investigation for the purpose of delineating the potential visibility associated with the proposed 75' lightning mast and 26' substation equipment. The methodology utilized during the field investigation is referred to as a "balloon test." Two, five-foot diameter balloons were flown, one at 75' the other at 26' within the location of the proposed substation by tethering the balloons to 75' of line, which due to the wooded area was secured 100' east of the approximate center of the proposed substation location.

With the balloon in place, two field investigators from Clough, Harbour & Associates LLP began the analysis. One person stayed with the balloon to report wind direction. The other drove nearby local roads within the search area to document locations and extent of certain areas within public right-of-ways from which the balloon was visible. Photographs were taken with a Canon PowerShot A95 digital camera from various vantage points to document views toward the balloons, as well as the general character of the area. Photograph locations were chosen to provide a general characteristic of visibility. At each photograph location, waypoints were obtained utilizing a handheld GPS unit to aid in the interpolation of visibility. Each photograph includes a brief description of the location and orientation from which it was taken. It should be noted that during this field investigation, only areas of public right-of-way and public places (parks, schools, etc.) were investigated.

Q: Please describe the results of the visual resource investigation for the proposed 6D site.

A: Our investigation reveled that the balloons flown were not visible from any of the identified photo locations.

The statements above are true and complete to the best of my knowledge.

10-19-06
Date

Paul Lusitani
Paul Lusitani

Subscribed and sworn before me this _19_ th day of October, 2006

By: Cathleen D. Quinn
NOTARY 11/31/07

Visual Resource Investigation

**Town of Trumbull
The United Illumination Company
Trumbull Substation
Trumbull, CT**

October 13, 2006

Prepared by:
CLOUGH HARBOUR & ASSOCIATES LLP
2139 Silas Deane Highway
Suite 212
Rocky Hill, CT 06067-2336

Landscape Setting and Existing Conditions

The project site is located in the Town of Trumbull. This area of the property is wooded along its perimeter bordering United Illuminating Company transmission lines. The property is between Oakridge Road. and Rockyridge Road

Methodology to Establish the Visual Relationship between the Project Site and the Surrounding Visual Environment

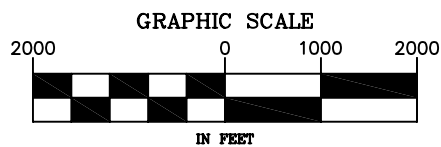
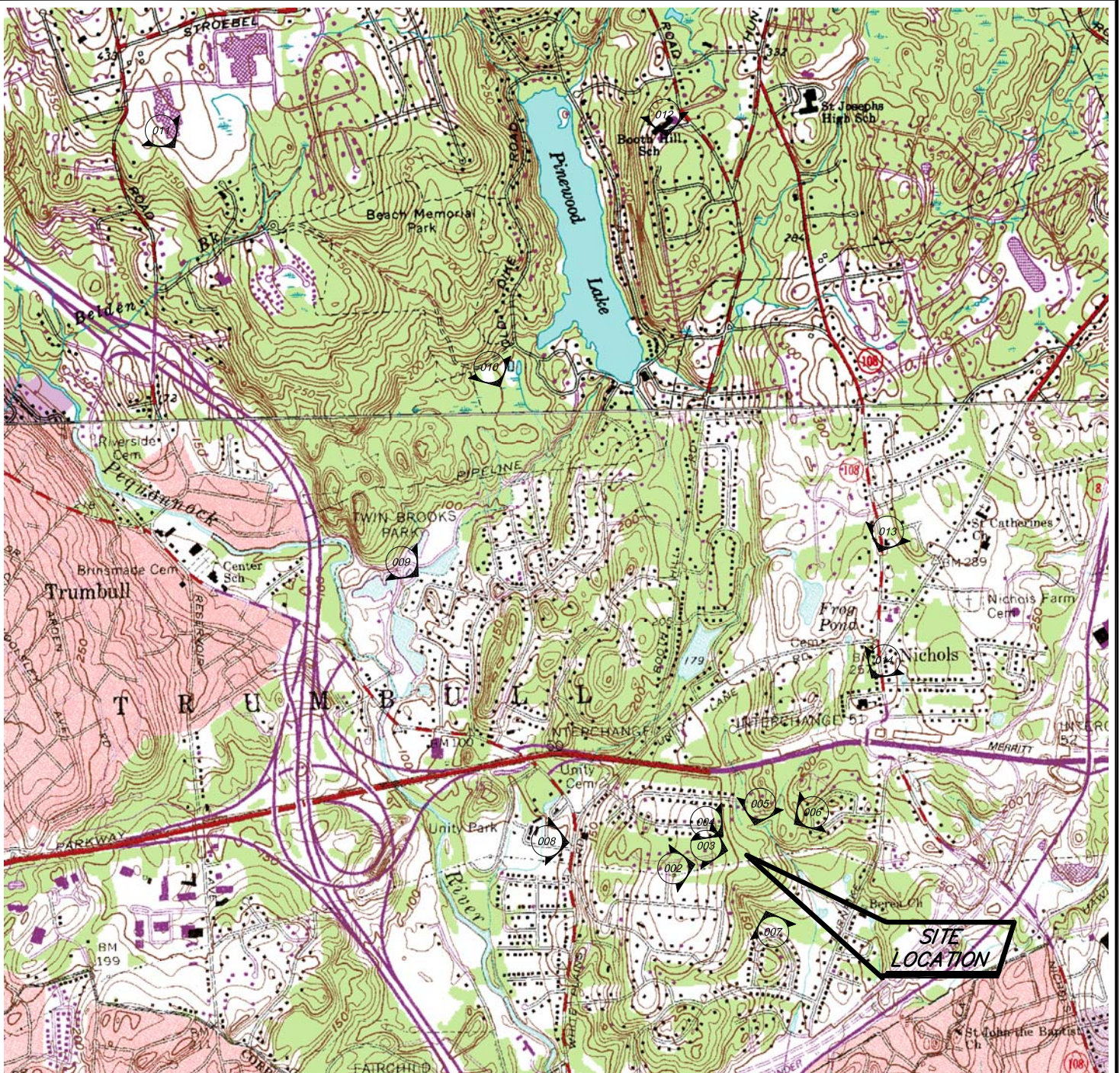
Prior to the field investigation, a preliminary mapping was developed to identify select locations which would have potential interest to the viewing public. Including but not limited to; public schools, parks, and libraries, and cemeteries.

On October 13, 2006 Clough Harbour & Associates LLP conducted a field investigation for the purpose of delineating the potential visibility associated with the proposed 75' lightning mast and 26' substation equipment. The methodology utilized during the field investigation is referred to as a "balloon test." Two, five-foot diameter balloons were flown, one at 75' the other at 26' within the location of the proposed substation by tethering the balloons to 75' of line, which due to the wooded area was secured 100' east of the approximate center of the proposed substation location.

With the balloon in place, two field investigators from Clough, Harbour & Associates LLP began the analysis. One person stayed with the balloon to report wind direction. The other drove nearby local roads within the search area to document locations and extent of certain areas within public right-of-ways from which the balloon was visible. Photographs were taken with a Canon PowerShot A95 digital camera from various vantage points to document views toward the balloons, as well as the general character of the area. Photograph locations were chosen to provide a general characteristic of visibility. At each photograph location, waypoints were obtained utilizing a handheld GPS unit to aid in the interpolation of visibility. Each photograph includes a brief description of the location and orientation from which it was taken. It should be noted that during this field investigation, only areas of public right-of-way and public places (parks, schools, etc.) were investigated.

Documentation

A photo location map and the photographs discussed above are enclosed.



USGS QUAD PHOTO LOCATION MAP

SCALE: 1" = 2000'
October 17, 2006

1 OF 1

REVISION
NUMBER 1

Drawing Copyright © 2006 Clough Harbour & Associates LLP



CLOUGH HARBOUR & ASSOCIATES LLP
2139 Silas Deane Highway, Suite 212 • Rocky Hill, CT 06067-2336
Main: (860) 257-4557 • www.cloughharbour.com

TOWN OF TRUMBULL
5866 Main Street
Trumbull, CT 06601

PHOTO LOCATION MAP
SITE 6D
TRUMBULL, CT

CHA PROJ. NO. - 16154.1000



For conceptual purposes only - actual equipment locations
to be determined based on final engineering design



CLOUGH HARBOUR & ASSOCIATES LLP

VIEW 1
AT SITE

Town of Trumbull, CT

5866 Main Street
Trumbull, CT 06601

DATE: OCT 2006

SITE: 6D



For conceptual purposes only - actual equipment locations
to be determined based on final engineering design



CLOUGH HARBOUR & ASSOCIATES LLP

VIEW 2 – NON-VISIBLE
HILLSTON ROAD

Town of Trumbull, CT

5866 Main Street
Trumbull, CT 06601

DATE: OCT 2006

SITE: 6D



For conceptual purposes only - actual equipment locations
to be determined based on final engineering design



CLOUGH HARBOUR & ASSOCIATES LLP

VIEW 3 – NON-VISIBLE
65 QUAIL STREET

Town of Trumbull, CT

5866 Main Street
Trumbull, CT 06601

DATE: OCT 2006

SITE: 6D



For conceptual purposes only - actual equipment locations
to be determined based on final engineering design



CLOUGH HARBOUR & ASSOCIATES LLP

VIEW 4 – NON-VISIBLE
64 LEFFERT ROAD

Town of Trumbull, CT

5866 Main Street
Trumbull, CT 06601

DATE: OCT 2006

SITE: 6D



For conceptual purposes only - actual equipment locations
to be determined based on final engineering design



VIEW 5 – NON-VISIBLE
74 ROLLING WOOD ROAD

Town of Trumbull, CT

5866 Main Street
Trumbull, CT 06601

DATE: OCT 2006

SITE: 6D



For conceptual purposes only - actual equipment locations
to be determined based on final engineering design



VIEW 6 – NON-VISIBLE
21 ROCKY RIDGE DRIVE

Town of Trumbull, CT

5866 Main Street
Trumbull, CT 06601

DATE: OCT 2006

SITE: 6D



For conceptual purposes only - actual equipment locations
to be determined based on final engineering design



CLOUGH HARBOUR & ASSOCIATES LLP

VIEW 7 – NON-VISIBLE
38 ROUND HILL ROAD

Town of Trumbull, CT

5866 Main Street
Trumbull, CT 06601

DATE: OCT 2006

SITE: 6D



For conceptual purposes only - actual equipment locations
to be determined based on final engineering design



VIEW 8 – NON-VISIBLE
UNITY PARK

Town of Trumbull, CT

5866 Main Street
Trumbull, CT 06601

DATE: OCT 2006

SITE: 6D



For conceptual purposes only - actual equipment locations
to be determined based on final engineering design



VIEW 9 – NON-VISIBLE
TWIN BROOKS PARK

Town of Trumbull, CT

5866 Main Street
Trumbull, CT 06601

DATE: OCT 2006

SITE: 6D



For conceptual purposes only - actual equipment locations
to be determined based on final engineering design



CLOUGH HARBOUR & ASSOCIATES LLP

VIEW 10 – NON-VISIBLE
BEACH MEMORIAL PARK

Town of Trumbull, CT

5866 Main Street
Trumbull, CT 06601

DATE: OCT 2006

SITE: 6D



For conceptual purposes only - actual equipment locations
to be determined based on final engineering design



CLOUGH HARBOUR & ASSOCIATES LLP

VIEW 11 – NON-VISIBLE
HILLCREST JUNIOR HIGH SCHOOL

Town of Trumbull, CT

5866 Main Street
Trumbull, CT 06601

DATE: OCT 2006

SITE: 6D



For conceptual purposes only - actual equipment locations
to be determined based on final engineering design



VIEW 12 – NON-VISIBLE
BOOTH HILL SCHOOL

Town of Trumbull, CT

5866 Main Street
Trumbull, CT 06601

DATE: OCT 2006

SITE: 6D



For conceptual purposes only - actual equipment locations
to be determined based on final engineering design



VIEW 13 – NON-VISIBLE
ABRAHAM NICHOLS PARK

Town of Trumbull, CT

5866 Main Street
Trumbull, CT 06601

DATE: OCT 2006

SITE: 6D



For conceptual purposes only - actual equipment locations
to be determined based on final engineering design



VIEW 14 - NON-VISIBLE
FAIRCHILD MEMORIAL LIBRARY

Town of Trumbull, CT

5866 Main Street
Trumbull, CT 06601

DATE: OCT 2006

SITE: 6D