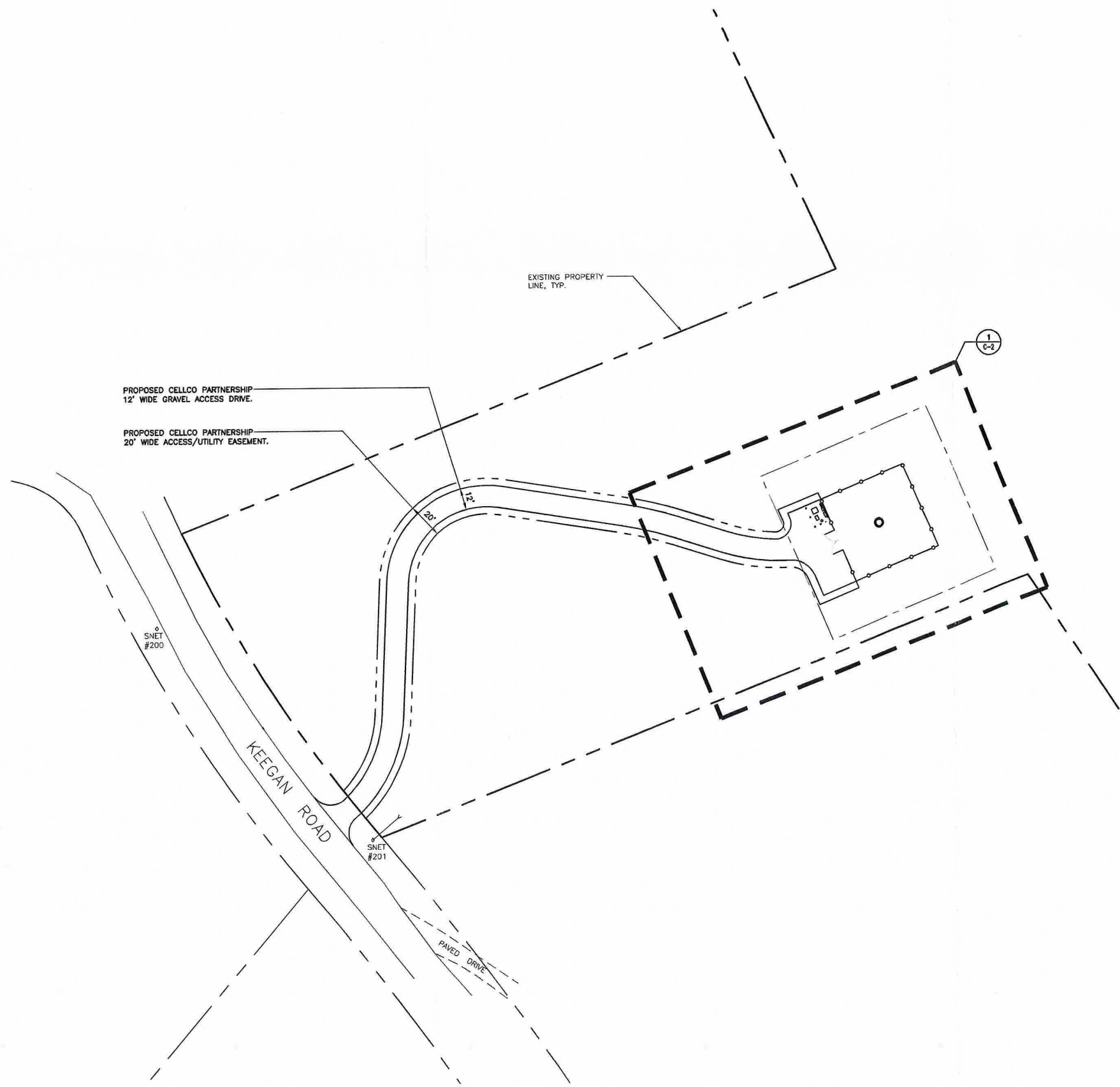
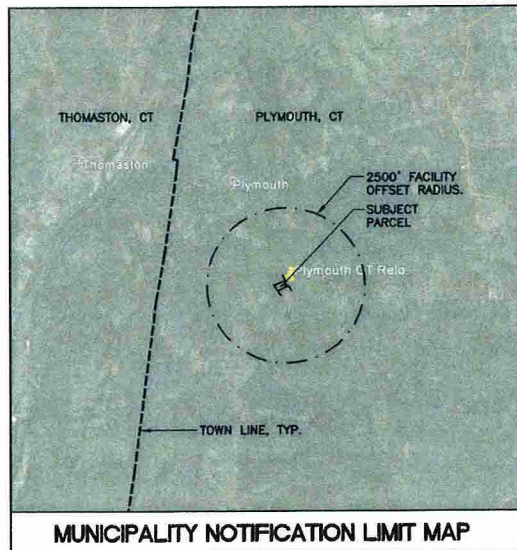
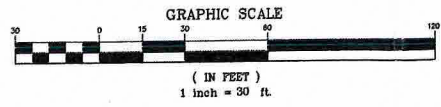


# **ATTACHMENT 2**





1  
C-1  
SCALE: 1"=30'



PROFESSIONAL ENGINEER SEAL	ISSUED FOR: CT STRING COUNCIL - CLIENT REVIEW
DATE: 05/02/14	DRAWN BY: CK'D BY
REV. 0	DESCRIPTION
Cellco Partnership d.b.a. Verizon Wireless	
<b>CENTEK</b> engineering <small>Centek of Colubare</small> (203) 488-0880 430 Middle Road Branford, CT 06405 www.CentekEng.com	
<b>Cellco Partnership d/b/a Verizon Wireless</b> WIRELESS COMMUNICATIONS FACILITY <b>PLYMOUTH WEST RELO.</b> 55 KEEGAN ROAD PLYMOUTH, CT 06782	
DATE:	05/01/14
SCALE:	AS NOTED
JOB NO.	13321.000
<b>SITE LOCATION PLAN</b>	
<b>C-1</b>	
Sheet No. 2 of 3	

