



**Connecticut  
Light & Power**

A Northeast Utilities Company

107 Selden Street, Berlin, CT 06037  
Northeast Utilities Service Company  
P.O. Box 270  
Hartford, CT 06141-0270

**RECEIVED**  
JAN 31 2013

CONNECTICUT  
SITING COUNCIL

January 31, 2013

Robert Stein, Chairman  
Connecticut Siting Council  
10 Franklin Square  
New Britain, CT 06051

**Re: Docket 435, Stamford Reliability Cable Project Bulk Filing #2**

Dear Chairman Stein:

In accordance with the pre-application process required by section 16-50/(e) of the Connecticut General Statutes and the Connecticut Siting Council's Application Guide for Electric and Fuel Transmission Line Facilities, The Connecticut Light and Power Company ("CL&P") conducted a municipal consultation process with the City of Stamford for the Stamford Reliability Cable Project ("Project"). This process formally began on September 9, 2012, more than 60 days in advance of CL&P's filing of the application with the Council concerning the Stamford Reliability Cable Project.

This letter and its enclosures specifically responds to the requirement in this process "to provide to the Council all materials provided to the municipality and a summary of the consultations with the municipality including all recommendations issued by the municipality," no later than 15 days after submitting the application to the Council.

Please find enclosed four copies of CL&P's Bulk Filing #2 containing the municipal consultation materials. An index of the documents that comprise this Bulk Filing #2 is attached. Included within these materials are slides for a number of presentations that CL&P made to municipal leaders and agencies, written correspondence, handout materials, a copy of the video presentations on DVD that were made available to attendees of the Project Open House (held on January 8, 2013), public comments and CL&P responses to comments.

Sincerely,

*John R. Morissette* <sup>o/s</sup>

John R. Morissette  
Manager, Transmission Siting

Enclosures

Received by: \_\_\_\_\_

Printed Name: \_\_\_\_\_

Date: \_\_\_\_\_

## **Attachment**

### **Docket 435: Stamford Reliability Cable Project**

#### **Bulk Filing 2 Index (4 copies)**

#### **City of Stamford and Agencies Presentations**

- P.1 - August 9, 2012, Office of the Mayor
- P.2 - August 14, 2012, City Engineers and Operations Personnel and ConnDOT
- P.3 - September 26, 2012, City Engineers and Operations Personnel, ConnDOT and MNRR
- P.4 - October 9, 2012, Neighborhood Revitalization Zone (NRZ)
- P.5 - October 25, 2012, Southwest Regional Metropolitan Planning Organization
- P.6 - November 14, 2012, Stamford Chamber of Commerce Board Meeting
- P.7 - November 27, 2012, City Engineers and Operations Personnel, ConnDOT and MNRR

#### **Open House, January 8, 2013**

- OH.1 - Welcome/Comments
  - Comment Card, SRCP Brochure and Bill Insert
- OH.2 - Route Maps and Video
  - Route Maps and DVD
- OH.3 - Needs/Benefits
- OH.4 - Proposed Upgrades
- OH.5 - Underground Technology
  - Photo of Splice Vault Display
- OH.6 - Electric Magnetic Fields
  - Information Sheet
- OH.7 - Emergency Preparedness/Tree Trimming
  - Information Sheets , Customer Map and DVD

#### **Correspondence**

- C.1 - Email from Oil Star with CL&P response on January 4, 2013
- C.2 - Press Release of the Open House, January 7 2013
- C.3 - Comment from Mr. Freundlich at Open House and CL&P response to Mr. Freundlich on January 26, 2013
- C.4 - Comment from Mr. Werner at Open House and CL&P response to Mr. Werner on January 26, 2013
- C.5 - Email from City of Stamford Signal Systems Engineer with CL&P response on January 10, 2013



Stamford  
Reliability Cable Project

## City of Stamford and Agencies Presentations

- P.1 - August 9, 2012, Office of the Mayor
- P.2 - August 14, 2012, City Engineers and Operations Personnel and ConnDOT
- P.3 - September 26, 2012, City Engineers and Operations Personnel, ConnDOT and MNRR
- P.4 - October 9, 2012, Neighborhood Revitalization Zone (NRZ)
- P.5 - October 25, 2012, South Western Regional Planning Agency
- P.6 - November 14, 2012, Stamford Chamber of Commerce Board Meeting
- P.7 - November 27, 2012, City Engineers and Operations Personnel, ConnDOT and MNRR

**RECEIVED**  
JAN 31 2013  
CONNECTICUT  
SITING COUNCIL



# Stamford Reliability Cable Project

Northeast Utilities

Proposed Underground  
Transmission Line

---

August 9<sup>th</sup>, 2012

9:00 AM

OFFICE OF THE MAYOR

STAMFORD – GOVERNMENT CENTER



# Agenda

- OPENING REMARKS – C. SWAN
- MEETING OBJECTIVE – A. MATHUR
- OVERVIEW – A. Mathur
  - Project Background
  - Project Benefits
  - Project Scope
  - Project Timeline
- PROPOSED CABLE ROUTES – A. Mathur
- COMMUNITY OUTREACH – C. Swan
  - Community Outreach Plan
  - Customer and Media Outreach Plan
- ROUNDTABLE – All

# Meeting Objective



Stamford  
Reliability Cable Project

- Engage City of Stamford during project planning phase
- Present Project Background, Scope, Benefits, Outreach Plan and Timeline
- Present Proposed Cable Routes
- Acquire support from City Of Stamford for 'Preferred Route'

## Project Background



- Accelerated economic growth in Stamford
- Need to improve system reliability to meet future customer demand

## Project Benefits

- Meet demand growth in City of Stamford
- Improved System Reliability

# Project Scope



Stamford  
Reliability Cable Project

- New 115,000 Volt underground line in Stamford
- 1.5 mile line from Glenbrook Substation to South End Substation
- Substation equipment upgrades at South End and Glenbrook



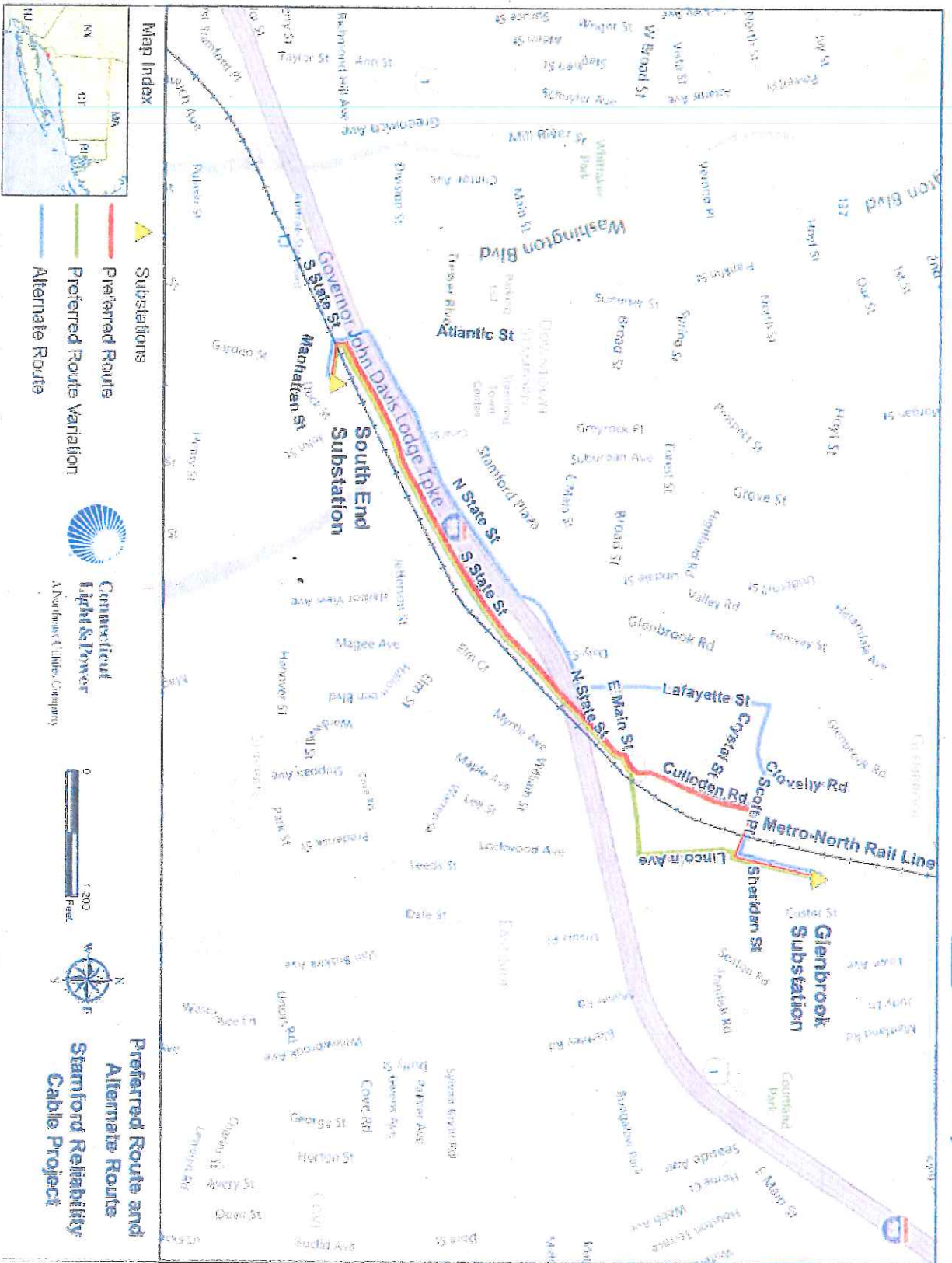
# Project Timeline



Stamford  
Reliability Cable Project

2011	2012	2013	2014
<ul style="list-style-type: none"> <li>✓ Preliminary Survey Engineering for Cable Route</li> <li>✓ Begin Municipal Outreach</li> </ul>	<ul style="list-style-type: none"> <li>✓ Continue Municipal Outreach</li> <li>✓ ISO-NE Project Approval</li> <li>□ Cable Route Analysis</li> <li>□ Begin Detailed Line Engineering &amp; Design</li> <li>□ Municipal Consultation Filing</li> <li>□ Customer &amp; Media Communications</li> <li>□ File CSC Application</li> </ul>	<ul style="list-style-type: none"> <li>□ Procure Long Lead Material</li> <li>□ Begin Substation Engineering &amp; Design</li> <li>□ CSC Data Requests</li> <li>□ Complete Detailed Engineering &amp; Design</li> <li>□ CSC Hearing</li> <li>□ CSC Approval</li> <li>□ PURA Method and Manner</li> <li>□ Local, ConnDOT and Metro-North Rail Road Permit Approvals and/or Agreements</li> </ul>	<ul style="list-style-type: none"> <li>□ Development &amp; Management Plan</li> <li>□ Substation Upgrades</li> <li>□ Line Construction</li> <li>□ Testing &amp; Commissioning</li> <li>□ Project In Service</li> </ul>

# Proposed Cable Routes



**Preferred Route and Alternate Route**  
**Stamford Reliability Cable Project**

# Community Outreach



**Stamford**  
Reliability Cable Project

<p><b>State Senator State Representatives</b></p>	<p><b>South West Regional Planning Agency (SWRPA)</b></p>	<p><b>East Side Partnership &amp; Businesses</b></p>
<p><b>Business Council Of Fairfield County</b></p>	<p><b>Stamford Housing Authority</b></p>	<p><b>Stamford Chamber of Commerce</b></p>
<p><b>Stamford Partnership Board of Directors</b></p>	<p><b>Neighborhood Associations - Glenbrook &amp; South End(CTE)</b></p>	<p><b>Stamford Board Of Representatives</b></p>

# Customer & Media Outreach



Stamford  
Reliability Cable Project

AUGUST 2012	SEPTEMBER 2012	OCTOBER 2012	NOVEMBER 2012
<ul style="list-style-type: none"> <li><input type="checkbox"/> Send abutters a brochure introducing them to the proposed project.</li> <li><input type="checkbox"/> Brochure will describe the project, schedule and a map of the proposed route.</li> <li><input type="checkbox"/> Customers will be directed to the Transmission Information Line if they have questions or comments.</li> </ul>	<ul style="list-style-type: none"> <li><input type="checkbox"/> Send Stamford customers a bill insert explaining the proposed project (two mailings)</li> <li><input type="checkbox"/> Send abutters a postcard notification about the Open House to be held in October, 2012</li> </ul>	<ul style="list-style-type: none"> <li><input type="checkbox"/> Continue to send abutters a postcard notification about the Open House to be held in October, 2012</li> <li><input type="checkbox"/> Issue a news release inviting residents to a project Open House</li> <li><input type="checkbox"/> Host the project Open House</li> <li><input type="checkbox"/> Follow up with customers on any questions or comments stemming from the Open House</li> </ul>	<ul style="list-style-type: none"> <li><input type="checkbox"/> Provide customers with a notification that CL&amp;P has filed an application for the project with the Connecticut Siting Council</li> </ul>



# Stamford Reliability Cable Project

## PROJECT UPDATE

### Proposed Underground Transmission Line

---

August 14, 2012

10:00 AM

7<sup>th</sup> Floor – Engineering Conference Room  
Government Center – Stamford, CT



# Meeting Objective



- To engage key stakeholders via periodic project updates
- To recap Problem Statement, Project Need & Benefits, Scope and Timeline
- To present project status on:
  - Outreach Program
  - Siting and Permitting
  - Engineering Progress
- To acquire feedback and direction from key stakeholders to help advance the project

# Agenda

- MEETING OBJECTIVE – A. Mathur
- OVERVIEW – A. Mathur
  - Problem Statement
  - Project Need
  - Project Benefits
  - Project Scope
  - Project Timeline
- COMMUNITY OUTREACH – C. Swan
  - Community Outreach
  - Meeting with Office of the Mayor
- CUSTOMER & MEDIA OUTREACH – F. Poirot
  - Bill Insert
  - Open House

# Agenda



Stamford  
Reliability Cable Project

- ENGINEERING – E. Hale / L. Hinzman
  - Proposed Cable Routes
  - Route Analysis Summary
  - Typical Splice Vault Installation
  - Typical Duct Bank Installation
  
- SITING & PERMITTING – A. Mathur
  - Municipal Consultation Filing (MCF)
  - Connecticut Siting Council (CSC) Application
  
- ROUNDTABLE – All



# Problem Statement



- Increased electrical demand in Southwest Connecticut
- Exposes the Southwest Connecticut transmission system to:
  - line overloads
  - voltage violations
  - high short-circuit currents under various conditions.
- These transmission system events increase the risk of customer service outages, which undermine the reliability of the system.

# Project Need & Benefit



Stamford  
Reliability Cable Project

- Southwest Connecticut region is one of the fastest growing areas in the State of Connecticut.
- Electric infrastructure should be upgraded to keep pace with customer demand.
- Ensure transmission system reliability in the Southwest Connecticut region by meeting stringent federal and regional reliability standards.

# Project Scope



Stamford  
Reliability Cable Project

- New 115 –kilovolt (kV) underground transmission circuit in Stamford.
- Approximately 1.5 miles from Glenbrook Substation to South End Substation via Preferred Route.
- Substation equipment upgrades at South End Substation and Glenbrook Substation installed entirely within their existing fenced-in areas.

# Project Timeline



Stamford  
Reliability Cable Project

2011	2012	2013	2014
<ul style="list-style-type: none"> <li>✓ Preliminary Survey Engineering for Cable Route</li> <li>✓ Begin Municipal Outreach</li> </ul>	<ul style="list-style-type: none"> <li>✓ Continue Municipal Outreach</li> <li>✓ ISO-NE Project Approval</li> <li>✓ Cable Route Analysis</li> <li>□ Begin Detailed Line Engineering &amp; Design</li> <li>□ Municipal Consultation Filing</li> <li>□ Customer &amp; Media Communications</li> <li>□ File CSC Application</li> </ul>	<ul style="list-style-type: none"> <li>□ Procure Long Lead Material</li> <li>□ Begin Substation Engineering &amp; Design</li> <li>□ CSC Data Requests</li> <li>□ Complete Detailed Engineering &amp; Design</li> <li>□ CSC Hearing</li> <li>□ CSC Approval</li> <li>□ PURA Method and Manner</li> <li>□ Local, ConnDOT and Metro-North Rail Road Permit Approvals and/or Agreements</li> </ul>	<ul style="list-style-type: none"> <li>□ Development &amp; Management Plan</li> <li>□ Substation Upgrades</li> <li>□ Line Construction</li> <li>□ Testing &amp; Commissioning</li> <li>□ Project In Service</li> </ul>

# Community Outreach



Stamford  
Reliability Cable Project

<p>State Senator State Representatives</p>	<p>South West Regional Planning Agency (SWRPA)</p>	<p>East Side Partnership &amp; Businesses</p>
<p>Business Council Of Fairfield County</p>	<p>Stamford Housing Authority</p>	<p>Stamford Chamber of Commerce</p>
<p>Stamford Partnership Board of Directors</p>	<p>Neighborhood Associations - Glenbrook &amp; South End(CTE)</p>	<p>Stamford Board Of Representatives</p>

# Customer & Media Outreach



Stamford  
Reliability Cable Project

AUGUST 2012	SEPTEMBER 2012	OCTOBER 2012	NOVEMBER 2012
<ul style="list-style-type: none"> <li><input type="checkbox"/> Send abutters a brochure introducing them to the proposed project.</li> <li><input type="checkbox"/> Brochure will describe the project, schedule and a map of the proposed route.</li> <li><input type="checkbox"/> Customers will be directed to the Transmission Information Line if they have questions or comments.</li> </ul>	<ul style="list-style-type: none"> <li><input type="checkbox"/> Send Stamford customers a bill insert explaining the proposed project (two mailings)</li> <li><input type="checkbox"/> Send abutters a postcard notification about the Open House to be held in October, 2012</li> </ul>	<ul style="list-style-type: none"> <li><input type="checkbox"/> Continue to send abutters a postcard notification about the Open House to be held in October, 2012</li> <li><input type="checkbox"/> Issue a news release inviting residents to a project Open House</li> <li><input type="checkbox"/> Host the project Open House</li> <li><input type="checkbox"/> Follow up with customers on any questions or comments stemming from the Open House</li> </ul>	<ul style="list-style-type: none"> <li><input type="checkbox"/> Provide customers with a notification that CL&amp;P has filed an application for the project with the Connecticut Siting Council</li> </ul>

# Open House



Stamford  
Reliability Cable Project

- **DATE** : October, 2012 (date pending)
- **TIME** : 5PM – 8PM ? (tentative)
- **VENUE** : Stamford Government Center Lobby  
(proposed)
- **DISPLAYS** : Setup Informational Kiosks or Stations
- **PARKING** : Government Center Garage
- **CONTACT** : Frank Poirot – CL&P Media Relations

# Open House – Plan for Kiosks



Stamford  
Reliability Cable Project

**Welcome:** Greet Guests and provide project handouts

## Project Need

Highlight project benefits to City of  
Stamford residents

## Route Locator

Generate large maps depicting  
Preferred and Alternate Routes

## Underground Transmission

Displays with Cable Samples,  
Splice Vaults, Duct Bank  
Installation, EMF, etc.

## Tree Trimming

CL&P Standards and necessity to  
maintain system reliability

## Emergency Preparedness

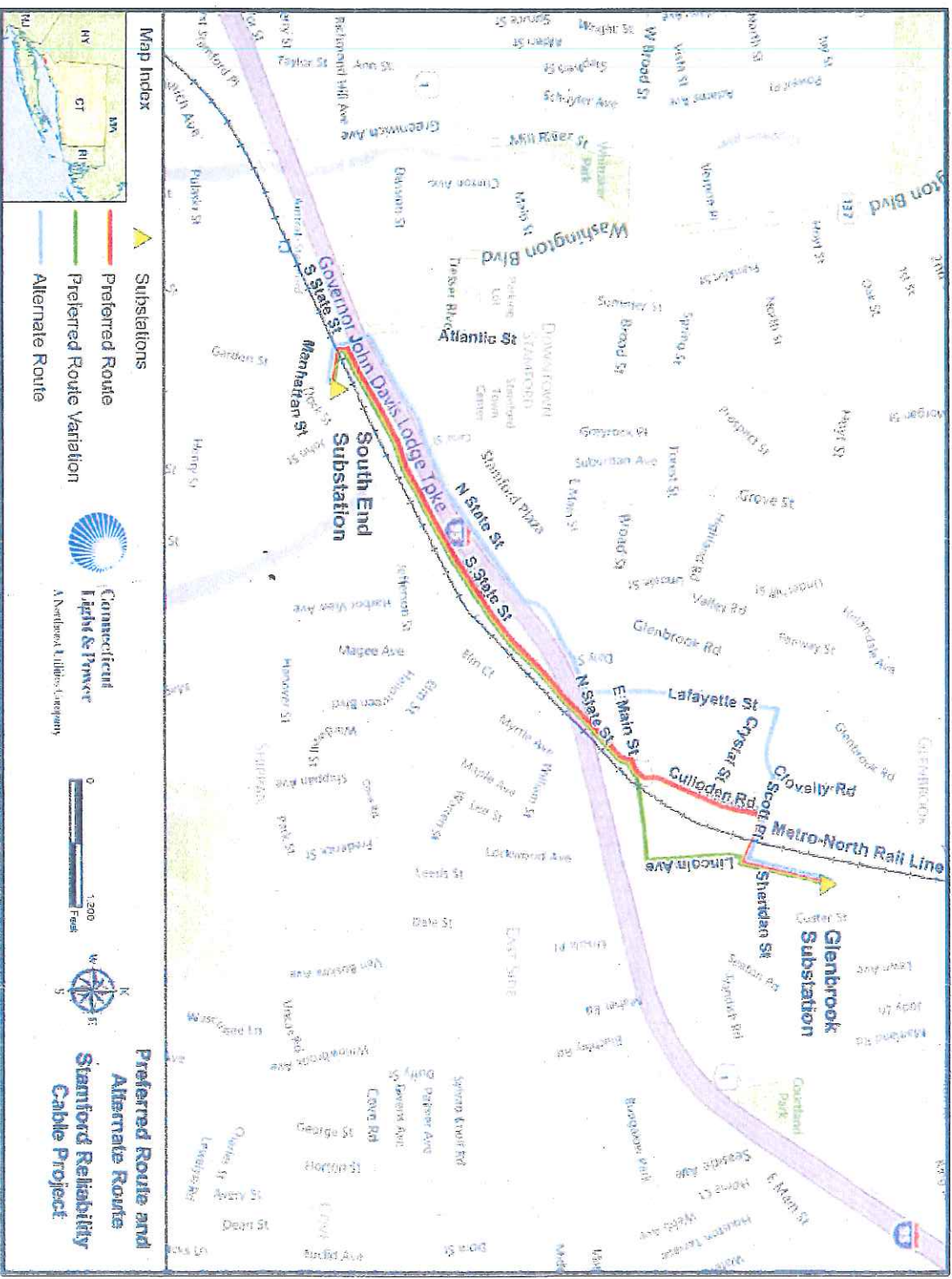
Highlight CL&P's readiness and  
updated approach

## Exit

: Provide residents with a project comment card, which could  
be collected or returned by mail



# Proposed Cable Routes



# Route Analysis Summary

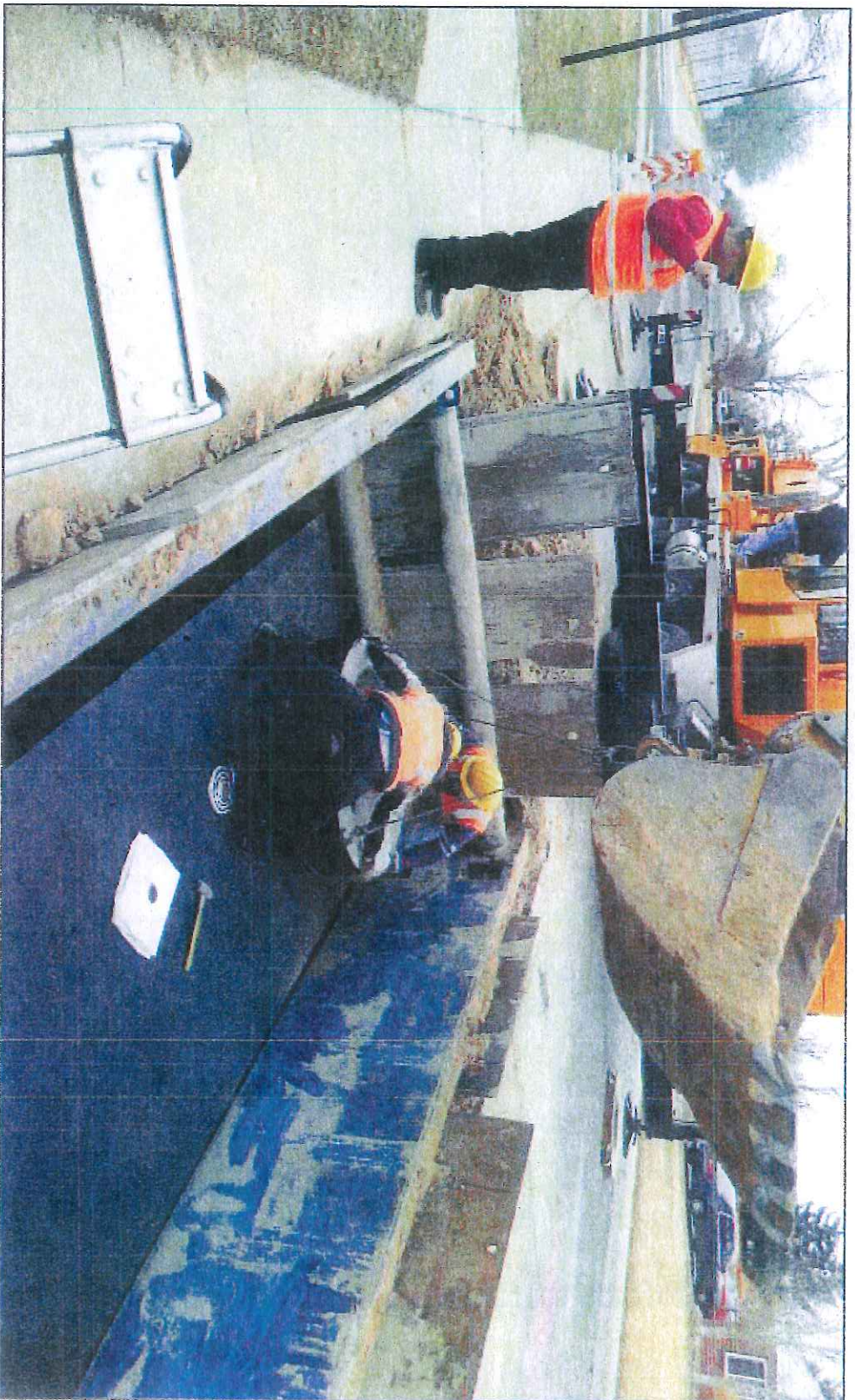


	Preferred Route	Preferred Route Variation	Alternate Route
Route Length	8,000 ft.	8,080 ft.	8,800 ft.
Impact to ConnDOT Property			
Route 1	175 ft.	1,050 ft.	45 ft.
Atlantic Street	100 ft.	100 ft.	100 ft.
ConnDOT Encroachment Agreement Required	No	Yes	No
Railroad Crossing Agreement Required	Yes	No	Yes
Impact to City Projects (SUT)	0 ft.	700 ft.	0 ft.
Underground Utilities Congestion	Least	Greatest	Moderate
Abutters Affected	Moderate	Moderate	Greatest
Property Easement Required	1	0	2
Schools/Daycares within 500 ft.	0	0	2 (Daycares)

# Typical Splice Vault Installation



Stamford  
Reliability Cable Project



# Typical Duct Bank Installation

 Stamford  
Reliability Cable Project



# Municipal Consultation Filing (MCF)



Stamford  
Reliability Cable Project

- Draft document to be sent to (internal) Mandatory Review Panel
- On schedule to file in Q3 – 2012

## Connecticut Siting Council (CSC) Application

- Draft document in development
- On schedule to file by year end 2012
- Hearing to be scheduled by CSC

# Roundtable and Next Steps



Stamford  
Reliability Cable Project



# Stamford Reliability Cable Project

## PROJECT UPDATE

### Proposed Underground Transmission Line

---

September 26, 2012

10:30 AM

7<sup>th</sup> Floor – Engineering Conference Room  
Government Center – Stamford, CT



# Meeting Objective



Stamford  
Reliability Cable Project

- To engage key stakeholders via periodic project updates
- To recap project timeline and key accomplishments to date
- To present project status on:
  - Outreach Program
  - Siting and Permitting
  - Engineering Progress
- To acquire feedback and direction from key stakeholders to help advance the project



# Agenda



Stamford  
Reliability Cable Project

- MEETING OBJECTIVE – A. Mathur
- OVERVIEW – A. Mathur
  - Scope
  - Timeline
- COMMUNITY OUTREACH – C. Swan
  - Status of Presentations
- COMMUNICATIONS – A. Mathur
  - Brochure/Mailer
  - Bill Insert
  - Open House

# Agenda



- ENGINEERING – E. Hale / P. Novak
  - Proposed Cable Routes
  - Route Analysis Summary
  - Proposed Easements Required
  - Traffic Management Plan
  
- SITING & PERMITTING – A. Mathur
  - Municipal Consultation Filing (MCF)
  - Connecticut Siting Council (CSC) Application
  
- ROUNDTABLE – All

# Project Scope



- New 115 –kilovolt (kV) underground transmission circuit in Stamford.
- Approximately 1.5 miles from Glenbrook Substation to South End Substation via Preferred Route.
- Substation equipment upgrades at South End Substation and Glenbrook Substation installed entirely within their existing fenced-in areas.

# Project Timeline



Stamford  
Reliability Cable Project

2011	2012	2013	2014
<ul style="list-style-type: none"> <li>✓ Preliminary Survey Engineering for Cable Route</li> <li>✓ Begin Municipal Outreach</li> </ul>	<ul style="list-style-type: none"> <li>✓ Continue Municipal Outreach</li> <li>✓ ISO-NE Project Approval</li> <li>✓ Cable Route Analysis</li> <li>✓ Begin Detailed Line Engineering &amp; Design</li> <li>✓ Municipal Consultation Filing</li> <li>✓ Begin Customer Communications</li> <li>✓ Begin Real Estate and Property Management (Easements)</li> <li>□ File CSC Application</li> </ul>	<ul style="list-style-type: none"> <li>□ Procure Long Lead Material</li> <li>□ Begin Substation Engineering &amp; Design</li> <li>□ CSC Data Requests</li> <li>□ Complete Detailed Engineering &amp; Design</li> <li>□ CSC Hearing</li> <li>□ CSC Approval</li> <li>□ PURA Method and Manner</li> <li>□ Local, ConnDOT and Metro-North Rail Road Permit Approvals and/or Agreements</li> </ul>	<ul style="list-style-type: none"> <li>□ Development &amp; Management Plan</li> <li>□ Substation Upgrades</li> <li>□ Line Construction</li> <li>□ Testing &amp; Commissioning</li> <li>□ Project In Service</li> </ul>

# Community Outreach



**Stamford**  
Reliability Cable Project

<p><b>State Senator State Representatives</b></p>	<p><b>South West Regional Planning Agency (SWRPA)</b></p>	<p><b>East Side Partnership &amp; Businesses</b></p>
<p><b>Business Council Of Fairfield County</b></p>	<p><b>Stamford Housing Authority</b></p>	<p><b>Stamford Chamber of Commerce</b></p>
<p><b>Stamford Partnership Board of Directors</b></p>	<p><b>Neighborhood Associations - Glenbrook &amp; South End(CTE)</b></p>	<p><b>Stamford Board Of Representatives</b></p>

# Communications



Stamford  
Reliability Cable Project

AUGUST 2012	SEPTEMBER 2012	OCTOBER 2012	NOVEMBER 2012
<ul style="list-style-type: none"> <li>✓ Send abutters a brochure introducing them to the proposed project.</li> <li>✓ Brochure will describe the project, schedule and a map of the proposed route.</li> <li>✓ Customers will be directed to the Transmission Information Line if they have questions or comments.</li> </ul>	<ul style="list-style-type: none"> <li>✓ Send Stamford customers a bill insert explaining the proposed project (two mailings)</li> <li>✓ Developed and launch <a href="http://www.stamfordcable.com">www.stamfordcable.com</a> website</li> </ul>	<ul style="list-style-type: none"> <li>□ Send abutters a postcard notification about the Open House to be held in November, 2012</li> <li>□ Continue to send abutters a postcard notification about the Open House to be held in November, 2012</li> <li>□ Issue a news release inviting residents to a project Open House</li> </ul>	<ul style="list-style-type: none"> <li>□ Host the project Open House</li> <li>□ Follow up with customers on any questions or comments stemming from the Open House</li> <li>□ Provide customers with a notification that CL&amp;P has filed an application for the project with the Connecticut Siting Council</li> </ul>

# Open House



Stamford  
Reliability Cable Project

- **DATE** : November 7, 2012 (date pending)
- **TIME** : 6PM – 8PM ? (tentative)
- **VENUE** : Stamford Government Center Lobby  
(proposed)
- **DISPLAYS** : Setup Informational Kiosks or Stations
- **PARKING** : Government Center Garage
- **CONTACT** : Janine Saunders – Manager, CL&P Communications

# Open House – Plan for Kiosks



**Welcome:** Greet Guests and provide project handouts

## Project Need

Highlight project benefits to City of Stamford residents

## Route Locator

Generate large maps depicting Preferred and Alternate Routes

## Underground Transmission

Displays with Cable Samples, Splice Vaults, Duct Bank Installation

## EMF

Electric and Magnetic Fields and their affects

## Emergency Preparedness

Highlight CL&P's readiness and updated approach

## Tree Trimming

CL&P Standards and necessity to maintain system reliability

**Exit** : Provide residents with a project comment card, which could be collected or returned by mail



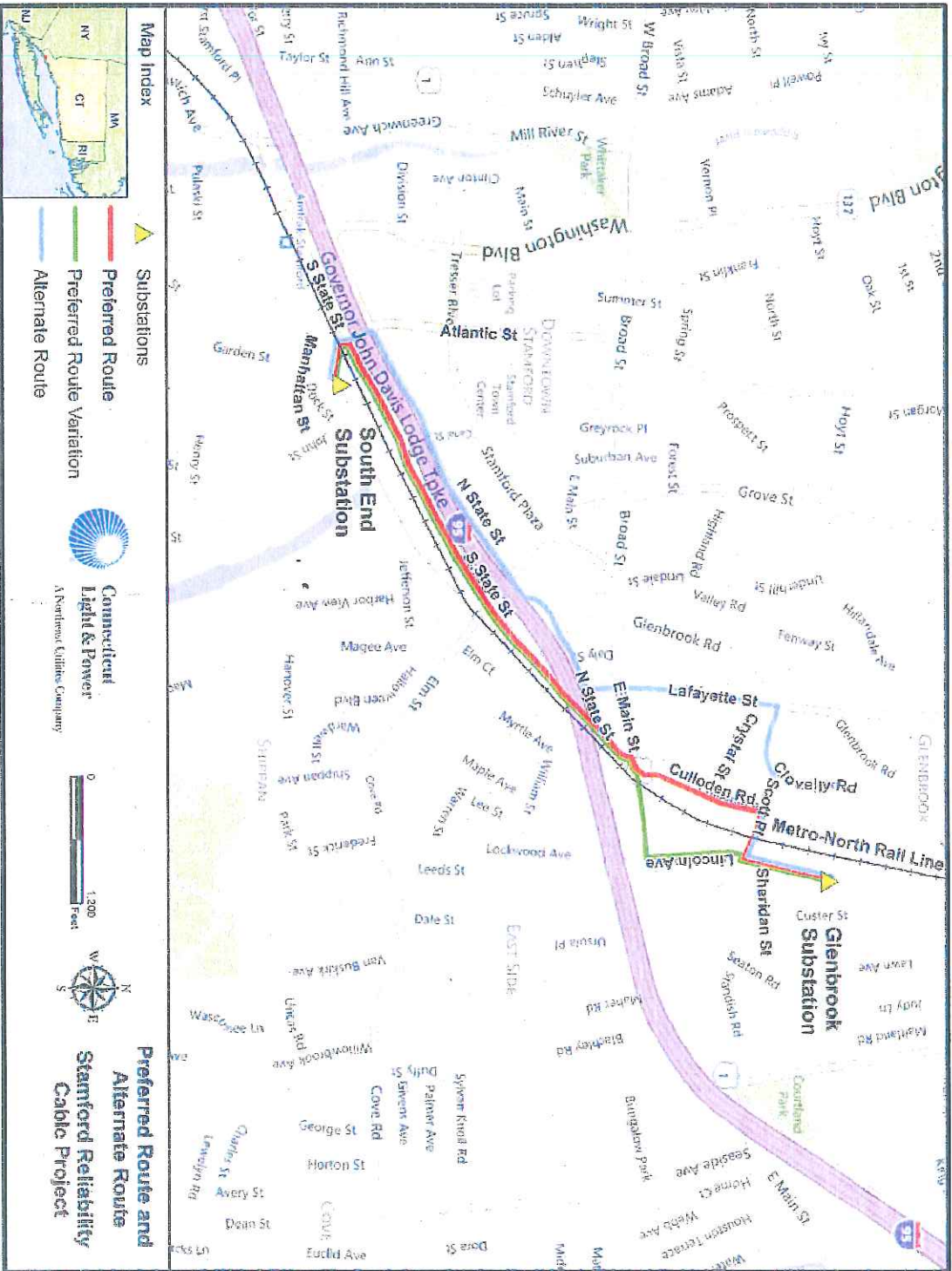
# Line Engineering



Stamford  
Reliability Cable Project

- Route Analysis
- Jack and Bore Design
- Vault Locations
- Cable Specification
- Permanent and Temporary Easements
- Potholing

# Proposed Cable Routes



# Route Analysis Summary



	Preferred Route	Preferred Route Variation	Alternate Route
Route Length	8,000 ft.	8,080 ft.	8,800 ft.
Impact to ConndOT Property			
Route 1	175 ft.	1,050 ft.	45 ft.
Atlantic Street	100 ft.	100 ft.	100 ft.
ConndOT Encroachment Agreement Required	No	Yes	No
Railroad Crossing Agreement Required	Yes	No	Yes
Impact to City Projects (SUT)	0 ft.	700 ft.	0 ft.
Underground Utilities Congestion	Least	Greatest	Moderate
Abutters Affected	Moderate	Moderate	Greatest
Property Easements Required	1	0	2
Schools/Daycares within 500 ft.	0	0	2 (Daycares)

## Municipal Consultation Filing (MCF)



Stamford  
Reliability Cable Project

- File with City of Stamford on September 10, 2012

## Connecticut Siting Council (CSC) Application

- Draft document in development
- On schedule to file by year end 2012
- Hearing to be scheduled by CSC

# Route Analysis Summary



Stamford  
Reliability Cable Project

	Preferred Route	Preferred Route Variation	Alternate Route
Route Length	8,000 ft.	8,080 ft.	8,800 ft.
Impact to ConndOT Property			
Route 1	175 ft.	1,050 ft.	45 ft.
Atlantic Street	100 ft.	100 ft.	100 ft.
ConndOT Encroachment Agreement Required	No	Yes	No
Railroad Crossing Agreement Required	Yes	No	Yes
Impact to City Projects (SUT)	0 ft.	700 ft.	0 ft.
Underground Utilities Congestion	Least	Greatest	Moderate
Abutters Affected	Moderate	Moderate	Greatest
Property Easements Required	1	0	2
Schools/Daycares within 500 ft.	0	0	2 (Daycares)

# Roundtable and Next Steps



Stamford  
Reliability Cable Project



# Stamford Reliability Cable Project

## PROJECT UPDATE

### Proposed Underground Transmission Line

---

October 9, 2012

6:30 PM

NRZ Meeting

CTE, 34 Woodland Avenue – Stamford, CT



# Agenda



- INTRODUCTIONS – PROJECT OVERVIEW - A. Mathur
- PROJECT DETAILS – A. Mathur
  - Proposed Cable Routes
  - Project Timeline
- SITING APPLICATION, OUTREACH, COMMUNICATIONS – C. Swan
  - Municipal Consultation Filing (MCF)
  - Connecticut Siting Council (CSC) Application
- QUESTIONS & CONTACT INFORMATION – All



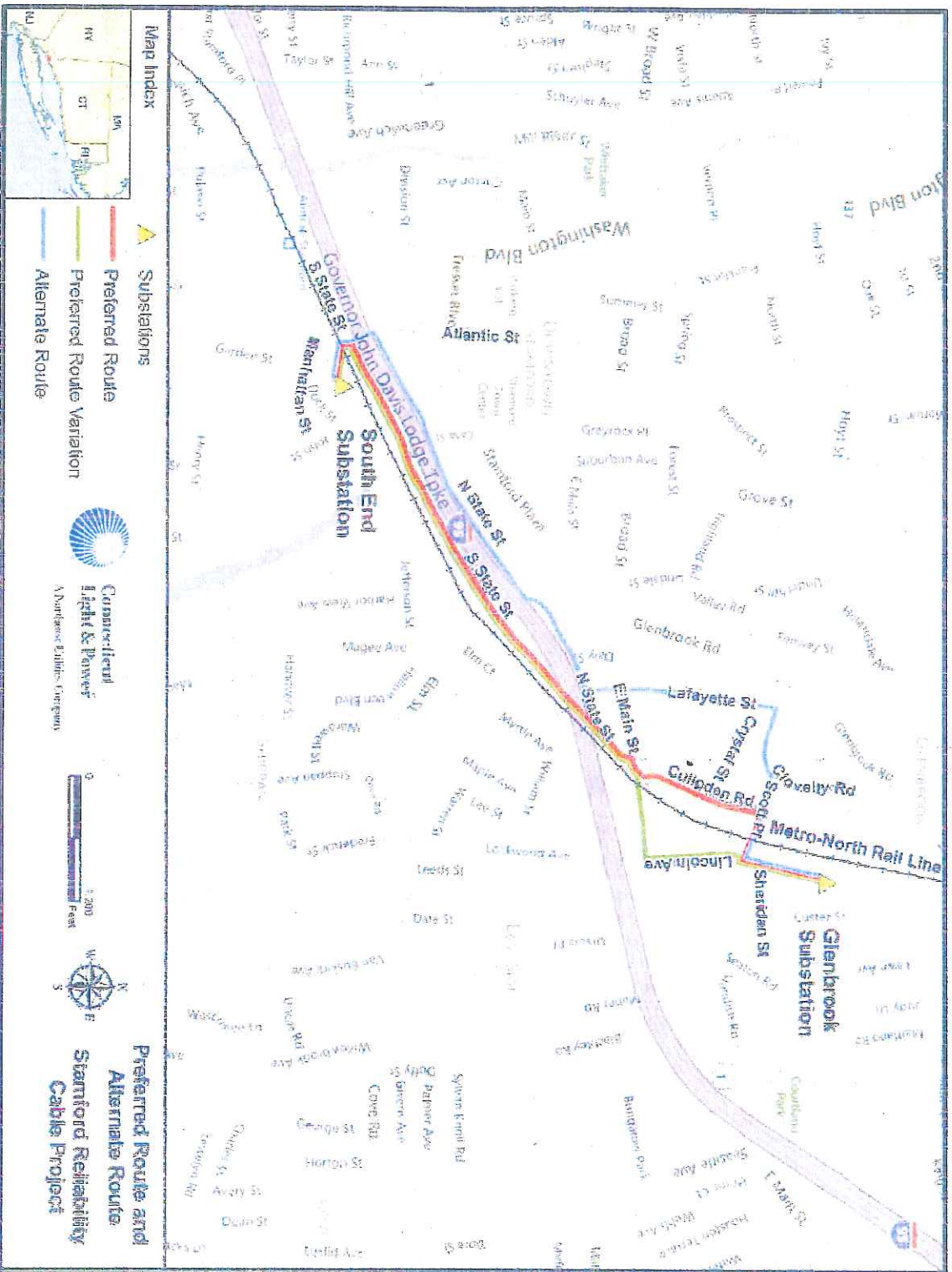
# Project Overview



## SCOPE:

- New 115 –kilovolt (kV) underground transmission circuit in Stamford.
- Approximately 1.5 miles from Glenbrook Substation to South End Substation via Preferred Route.
- Substation equipment upgrades at South End Substation and Glenbrook Substation installed entirely within their existing fenced-in areas.

# Proposed Cable Routes



# Project Timeline



Stamford  
Reliability Cable Project

2011	2012	2013	2014
<ul style="list-style-type: none"> <li>✓ Preliminary Survey Engineering for Cable Route</li> <li>✓ Begin Municipal Outreach</li> </ul>	<ul style="list-style-type: none"> <li>✓ Continue Municipal Outreach</li> <li>✓ ISO-NE Project Approval</li> <li>✓ Cable Route Analysis</li> <li>✓ Begin Detailed Line Engineering &amp; Design</li> <li>✓ Municipal Consultation Filing</li> <li>✓ Begin Customer Communications</li> <li>✓ Begin Real Estate and Property Management (Easements)</li> <li><input type="checkbox"/> File CSC Application</li> </ul>	<ul style="list-style-type: none"> <li><input type="checkbox"/> Procure Long Lead Material</li> <li><input type="checkbox"/> Begin Substation Engineering &amp; Design</li> <li><input type="checkbox"/> CSC Data Requests</li> <li><input type="checkbox"/> Complete Detailed Engineering &amp; Design</li> <li><input type="checkbox"/> CSC Hearing</li> <li><input type="checkbox"/> CSC Approval</li> <li><input type="checkbox"/> PURA Method and Manner</li> <li><input type="checkbox"/> Local, ConnDOT and Metro-North Rail Road Permit Approvals and/or Agreements</li> </ul>	<ul style="list-style-type: none"> <li><input type="checkbox"/> Development &amp; Management Plan</li> <li><input type="checkbox"/> Substation Upgrades</li> <li><input type="checkbox"/> Line Construction</li> <li><input type="checkbox"/> Testing &amp; Commissioning</li> <li><input type="checkbox"/> Project In Service</li> </ul>

## Municipal Consultation Filing (MCF)



Stamford  
Reliability Cable Project

- Filed with City of Stamford on September 10, 2012

## Connecticut Siting Council (CSC) Application

- Draft document in development
- On schedule to file by year end 2012
- Public hearing to be scheduled by CSC, likely in early 2013

# Community Outreach



Stamford Reliability Cable Project

<p>State Senator State Representatives</p>	<p>South West Regional Planning Agency (SWRPA)</p>	<p>East Side Partnership &amp; Businesses</p>
<p>Business Council Of Fairfield County</p>	<p>Stamford Housing Authority</p>	<p>Stamford Chamber of Commerce</p>
<p>Stamford Partnership Board of Directors</p>	<p>Neighborhood Associations - Glenbrook &amp; South End(CTE)</p>	<p>Stamford Board Of Representatives</p>

# Communications



Stamford  
Reliability Cable Project

AUGUST 2012	SEPTEMBER 2012	OCTOBER 2012	NOVEMBER 2012
<ul style="list-style-type: none"> <li>✓ Send abutters a brochure introducing them to the proposed project.</li> <li>✓ Brochure will describe the project, schedule and a map of the proposed route.</li> <li>✓ Customers will be directed to the Transmission Information Line if they have questions or comments.</li> </ul>	<ul style="list-style-type: none"> <li>✓ Send Stamford customers a bill insert explaining the proposed project (two mailings)</li> <li>✓ Developed and launched <a href="http://www.stamfordcable.com">www.stamfordcable.com</a> website</li> </ul>	<ul style="list-style-type: none"> <li>□ Send abutters a postcard notification about the Open House to be held on November 8, 2012</li> <li>□ Continue to send abutters a postcard notification about the Open House to be held November, 8, 2012</li> <li>□ Issue a news release inviting residents to a project Open House</li> </ul>	<ul style="list-style-type: none"> <li>□ Host the project Open House</li> <li>□ Follow up with customers on any questions or comments stemming from the Open House</li> <li>□ Provide customers with a notification that CL&amp;P has filed an application for the project with the Connecticut Siting Council</li> </ul>

# Open House



Stamford  
Reliability Cable Project

- **DATE** : November 8, 2012
- **TIME** : 6PM – 8PM
- **VENUE** : Stamford Government Center Lobby
- **DISPLAYS** : Setup Informational Kiosks or Stations
- **PARKING** : Government Center Garage

# Questions and Contact Information



- Website: [www.stamfordcable.com](http://www.stamfordcable.com)
- Project Contacts:
  - Chris Swan, Municipal Relations & Siting
    - [swancc@nu.com](mailto:swancc@nu.com)
    - 203-845-3421
  - Anuj Mathur, Project Manager
    - [anuj.mathur@nu.com](mailto:anuj.mathur@nu.com)
    - 860-665-6783



# Stamford Reliability Cable Project

## PROJECT UPDATE

### Proposed Underground Transmission Line

---

October 25, 2012

8:00 AM

South West Region MPO Meeting  
275 Wilson Avenue – Stamford, CT



# Agenda

Stamford  
Reliability Cable Project

- INTRODUCTIONS -- PROJECT OVERVIEW - A. Mathur
- PROJECT DETAILS -- A. Mathur
  - Proposed Cable Routes
  - Project Timeline
- SITING APPLICATION, OUTREACH, COMMUNICATIONS -- C. Swan
  - Municipal Consultation Filing (MCF)
  - Connecticut Siting Council (CSC) Application
- QUESTIONS & CONTACT INFORMATION -- All

# Project Overview

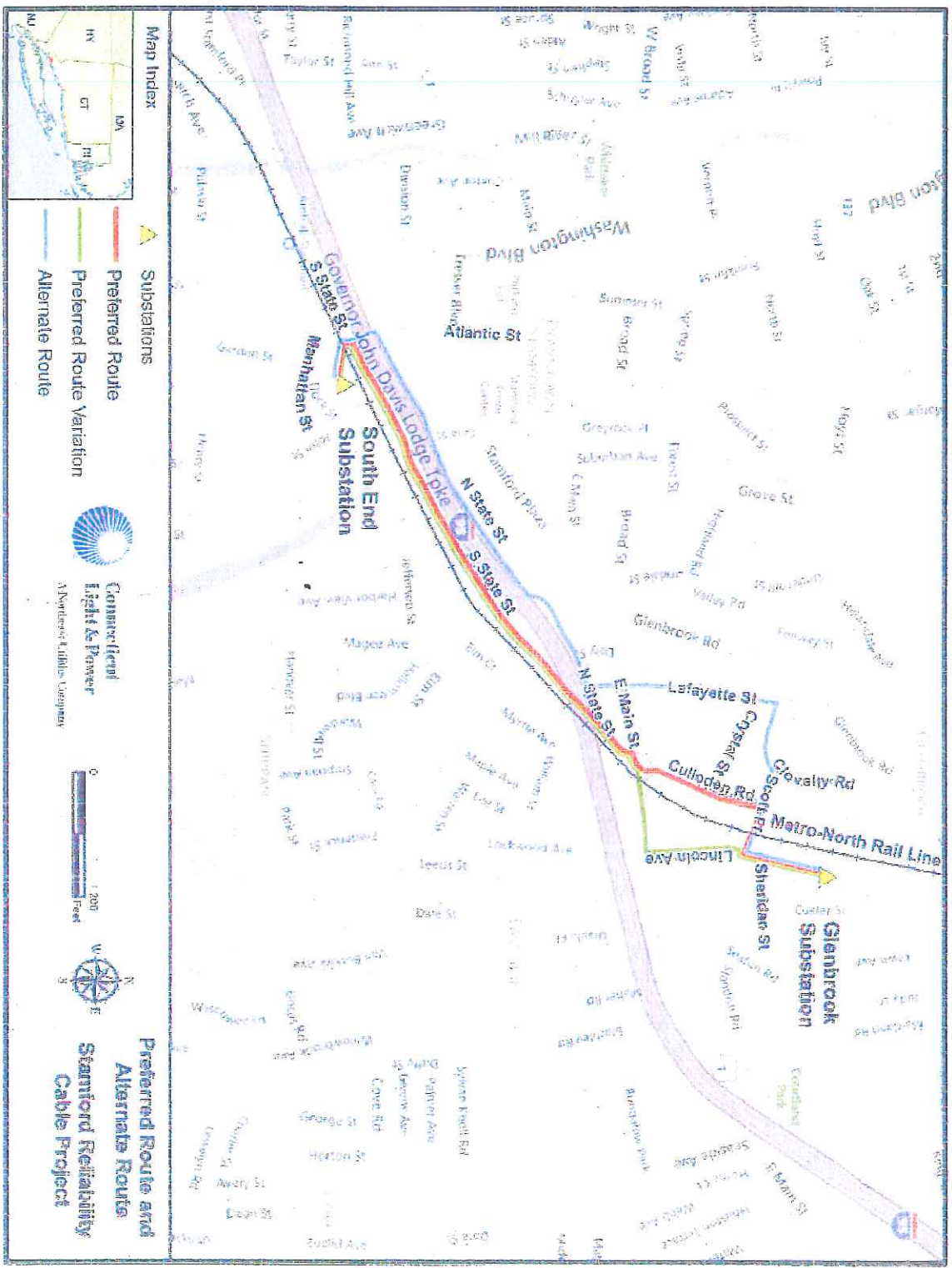
Stamford  
Reliability Cable Project

## SCOPE:

- New 115 –kilovolt (kV) underground transmission circuit in Stamford.
- Approximately 1.5 miles from Glenbrook Substation to South End Substation via Preferred Route.
- Substation equipment upgrades at South End Substation and Glenbrook Substation installed entirely within their existing fenced-in areas.

# Proposed Cable Routes

Stamford  
Reliability Cable Project



# Project Timeline

Stamford  
Reliability Cable Project

2011	2012	2013	2014
<ul style="list-style-type: none"> <li>✓ Preliminary Survey Engineering for Cable Route</li> <li>✓ Begin Municipal Outreach</li> </ul>	<ul style="list-style-type: none"> <li>✓ Continue Municipal Outreach</li> <li>✓ ISO-NE Project Approval</li> <li>✓ Cable Route Analysis</li> <li>✓ Begin Detailed Line Engineering &amp; Design</li> <li>✓ Municipal Consultation Filing</li> <li>✓ Begin Customer Communications</li> <li>✓ Begin Real Estate and Property Management (Easements)</li> <li>□ File CSC Application</li> </ul>	<ul style="list-style-type: none"> <li>□ Procure Long Lead Material</li> <li>□ Begin Substation Engineering &amp; Design</li> <li>□ CSC Data Requests</li> <li>□ Complete Detailed Engineering &amp; Design</li> <li>□ CSC Hearing</li> <li>□ CSC Approval</li> <li>□ PURA Method and Manner</li> <li>□ Local, ConnDOT and Metro-North Rail Road Permit Approvals and/or Agreements</li> </ul>	<ul style="list-style-type: none"> <li>□ Development &amp; Management Plan</li> <li>□ Substation Upgrades</li> <li>□ Line Construction</li> <li>□ Testing &amp; Commissioning</li> <li>□ Project In Service</li> </ul>

## Municipal Consultation Filing (MCF)

Stamford  
Reliability Cable Project

- Filed with City of Stamford on September 10, 2012

## Connecticut Siting Council (CSC) Application

- Draft document in development
- On schedule to file by year end 2012
- Public hearing to be scheduled by CSC, likely in early 2013

# Community Outreach

Stamford  
Reliability Cable Project

<p>State Senator State Representatives</p>	<p>South West Region MPO (SWRMPO)</p>	<p>East Side Partnership &amp; Businesses</p>
<p>Business Council Of Fairfield County</p>	<p>Stamford Housing Authority</p>	<p>Stamford Chamber of Commerce</p>
<p>Stamford Partnership Board of Directors</p>	<p>Neighborhood Associations - Glenbrook &amp; South End(CTE)</p>	<p>Stamford Board Of Representatives</p>

# Communications

Stamford  
Reliability Cable Project

AUGUST 2012	SEPTEMBER 2012	OCTOBER 2012	NOVEMBER 2012
<ul style="list-style-type: none"> <li>✓ Send abutters a brochure introducing them to the proposed project.</li> <li>✓ Brochure will describe the project, schedule and a map of the proposed route.</li> <li>✓ Customers will be directed to the Transmission Information Line if they have questions or comments.</li> </ul>	<ul style="list-style-type: none"> <li>✓ Send Stamford customers a bill insert explaining the proposed project (two mailings)</li> <li>✓ Developed and launched <a href="http://www.stamfordcable.com">www.stamfordcable.com</a> website</li> </ul>	<ul style="list-style-type: none"> <li>❑ Send abutters a postcard notification about the Open House to be held on November 8, 2012</li> <li>❑ Continue to send abutters a postcard notification about the Open House to be held November, 8, 2012</li> <li>❑ Issue a news release inviting residents to a project Open House</li> </ul>	<ul style="list-style-type: none"> <li>❑ Host the project Open House</li> <li>❑ Follow up with customers on any questions or comments stemming from the Open House</li> <li>❑ Provide customers with a notification that CL&amp;P has filed an application for the project with the Connecticut Siting Council</li> </ul>



# Open House

Stamford  
Reliability Cable Project

- **DATE:** November 8, 2012
- **TIME:** 6PM – 8PM
- **VENUE:** Stamford Government Center Lobby
- **DISPLAYS:** Informational Kiosks or Stations
- **PARKING:** Government Center Garage

# Questions and Contact Information

Stamford  
Reliability Cable Project

- Website: [www.stamfordcable.com](http://www.stamfordcable.com)
- Project Contacts:

Chris Swan, Municipal Relations & Siting  
[swancc@nu.com](mailto:swancc@nu.com)  
203-845-3421

Anuj Mathur, Project Manager  
[anuj.mathur@nu.com](mailto:anuj.mathur@nu.com)  
860-665-6783

# Stamford Reliability Cable Project

## PROJECT UPDATE

### Proposed Underground Transmission Line

---

November 14, 2012

4:30 PM

Stamford Chamber of Commerce

Board Meeting

Courtyard by Marriott

275 Summer Street, Stamford, CT



# Agenda

Stamford  
Reliability Cable Project

- INTRODUCTIONS -- PROJECT OVERVIEW - A. Mathur
  - Problem Statement
  - Need & Benefits
  - Project Scope
- PROJECT DETAILS -- A. Mathur
  - Proposed Cable Routes
  - Project Timeline
- SITING APPLICATION, OUTREACH, COMMUNICATIONS -- C. Swan
  - Municipal Consultation Filing (MCF)
  - Connecticut Siting Council (CSC) Application
- QUESTIONS & CONTACT INFORMATION -- All

# Problem Statement



Stamford  
Reliability Cable Project

- Increased electrical demand in Southwest Connecticut
- Exposes the Southwest Connecticut transmission system to:
  - line overloads
  - voltage violations
  - high short-circuit currents under various conditions.
- These transmission system events increase the risk of customer service outages, which undermine the reliability of the system.

# Project Need & Benefits



Stamford  
Reliability Cable Project

- Southwest Connecticut region is one of the fastest growing areas in the State of Connecticut.
- Electric infrastructure should be upgraded to keep pace with customer demand.
- Ensure transmission system reliability in the Southwest Connecticut region by meeting stringent federal and regional reliability standards.

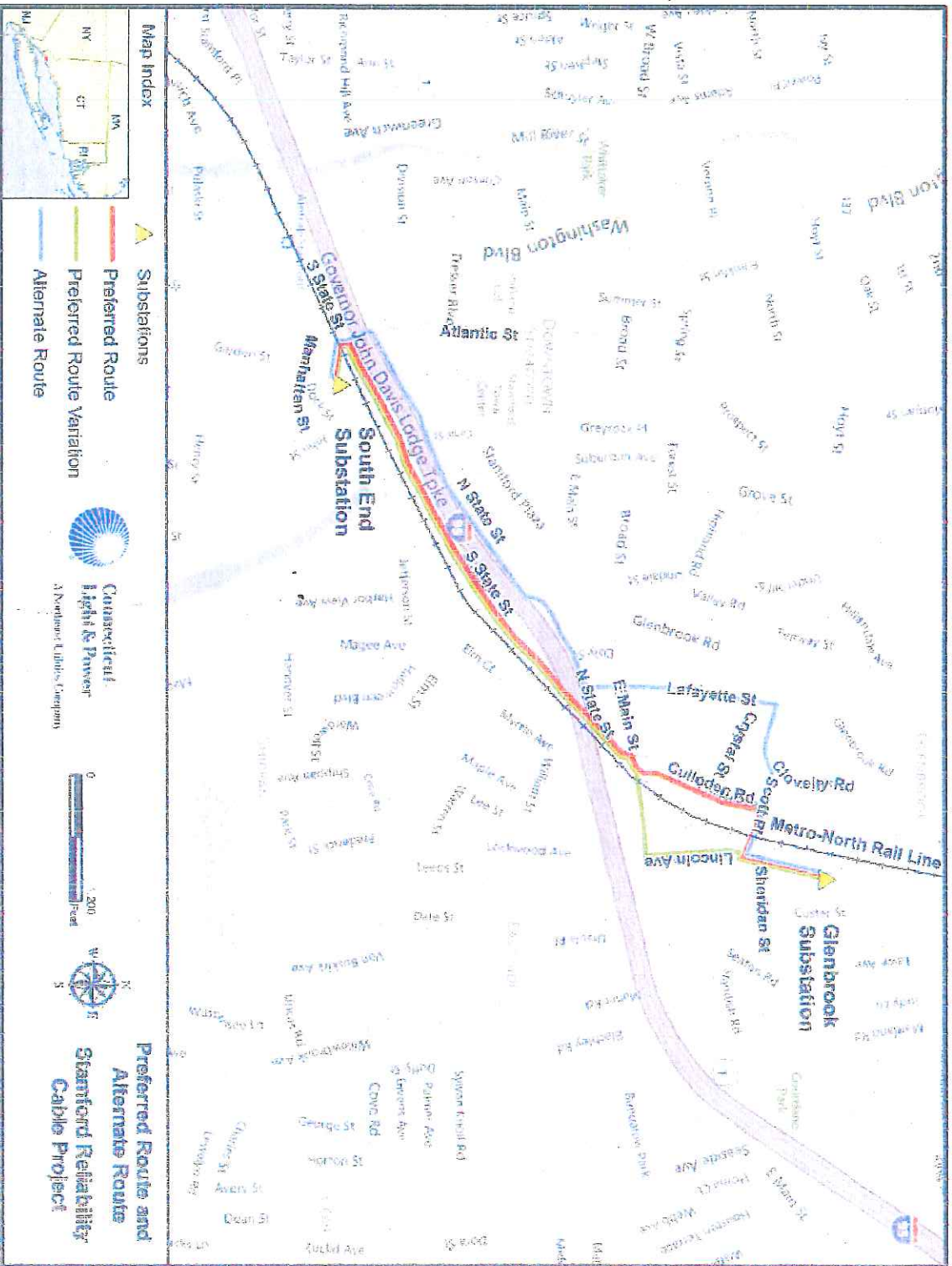
# Project Scope

Stamford  
Reliability Cable Project

- New 115 –kilo volt (kV) underground transmission circuit in Stamford.
- Approximately 1.5 miles from Glenbrook Substation to South End Substation via Preferred Route.
- Substation equipment upgrades at South End Substation and Glenbrook Substation installed entirely within their existing fenced-in areas.

# Proposed Cable Routes

Stamford  
Reliability Cable Project





# Project Timeline

Stamford  
Reliability Cable Project

2011	2012	2013	2014
<ul style="list-style-type: none"> <li>✓ Preliminary Survey Engineering for Cable Route</li> <li>✓ Begin Municipal Outreach</li> </ul>	<ul style="list-style-type: none"> <li>✓ Continue Municipal Outreach</li> <li>✓ ISO-NE Project Approval</li> <li>✓ Cable Route Analysis</li> <li>✓ Begin Detailed Line Engineering &amp; Design</li> <li>✓ Municipal Consultation Filing</li> <li>✓ Begin Customer Communications</li> <li>✓ Begin Real Estate and Property Management (Easements)</li> </ul>	<ul style="list-style-type: none"> <li><input type="checkbox"/> File CSC Application</li> <li><input type="checkbox"/> Procure Long Lead Material</li> <li><input type="checkbox"/> Begin Substation Engineering &amp; Design</li> <li><input type="checkbox"/> CSC Data Requests</li> <li><input type="checkbox"/> Complete Detailed Engineering &amp; Design</li> <li><input type="checkbox"/> CSC Hearing</li> <li><input type="checkbox"/> CSC Approval</li> <li><input type="checkbox"/> Local, ConnDOT and Metro-North Rail Road Permit Approvals and/or Agreements</li> </ul>	<ul style="list-style-type: none"> <li><input type="checkbox"/> PURA Method and Manner</li> <li><input type="checkbox"/> Development &amp; Management Plan</li> <li><input type="checkbox"/> Substation Upgrades</li> <li><input type="checkbox"/> Line Construction</li> <li><input type="checkbox"/> Testing &amp; Commissioning</li> <li><input type="checkbox"/> Project In Service</li> </ul>

# Municipal Consultation Filing (MCF)

Stamford  
Reliability Cable Project

- Filed with City of Stamford on September 10, 2012

## Connecticut Siting Council (CSC) Application

- Draft document in development
- To be filed in Q1 – 2013
- Public hearing to be scheduled by CSC, likely in early 2013

# Community Outreach

Stamford  
Reliability Cable Project

<p>State Senator State Representatives</p>	<p>South West Region MPO (SWRMPO)</p>	<p>East Side Partnership &amp; Businesses</p>
<p>Business Council Of Fairfield County</p>	<p>Stamford Housing Authority</p>	<p>Stamford Chamber of Commerce</p>
<p>Stamford Partnership Board of Directors</p>	<p>Neighborhood Associations - Glenbrook &amp; South End(CTE)</p>	<p>Stamford Board Of Representatives</p>

# Communications

Stamford  
Reliability Cable Project

AUGUST 2012	SEPTEMBER 2012	DECEMBER 2012	JANUARY 2013
<ul style="list-style-type: none"> <li>✓ Send abutters a brochure introducing them to the proposed project.</li> <li>✓ Brochure will describe the project, schedule and a map of the proposed route.</li> <li>✓ Customers will be directed to the Transmission Information Line if they have questions or comments.</li> </ul>	<ul style="list-style-type: none"> <li>✓ Send Stamford customers a bill insert explaining the proposed project (two mailings)</li> <li>✓ Developed and launched <a href="http://www.stamfordcable.com">www.stamfordcable.com</a> website</li> </ul>	<ul style="list-style-type: none"> <li>□ Send abutters a postcard notification about the Open House to be held in January, 2013.</li> <li>□ Continue to send abutters a postcard notification about the Open House to be held January, 2013.</li> <li>□ Issue a news release inviting residents to a project Open House</li> </ul>	<ul style="list-style-type: none"> <li>□ Host the project Open House</li> <li>□ Follow up with customers on any questions or comments stemming from the Open House</li> <li>□ Provide customers with a notification that C.L&amp;P has filed an application for the project with the Connecticut Siting Council</li> </ul>

# Open House

Stamford  
Reliability Cable Project

- **DATE:** January, 2013 (TBA)
- **TIME:** 6PM – 8PM
- **VENUE:** Stamford Government Center Lobby
- **DISPLAYS:** Informational Kiosks or Stations
- **PARKING:** Government Center Garage

# Questions and Contact Information

Stamford  
Reliability Cable Project

- Website: [www.stamfordcable.com](http://www.stamfordcable.com)
- Project Contacts:

Chris Swan, Municipal Relations & Siting

[swancc@nu.com](mailto:swancc@nu.com)

203-845-3421

Anuj Mathur, Project Manager

[anuj.mathur@nu.com](mailto:anuj.mathur@nu.com)

860-665-6783

## REPORT OF MEETING

**State Project Nos.:** 135-301  
**Project Title:** Metro-North Railroad Bridge Replacement Feasibility Study  
**Towns:** Stamford, CT  
**Date & Time of Meeting:** December 20, 2012, 9:00 A.M.  
**Location of Meeting:** Connecticut Department of Transportation Bldg, Rm G2215  
2800 Berlin Turnpike, Newington, CT  
**Subject of Meeting:** Scope of Services Discussion for Three Bridge Replacements  
(Atlantic, Elm and East Main Streets)

### **Attendance:**

<b>Name</b>	<b>Agency</b>	<b>Phone</b>
Scott Hill	CTDOT - Bridges & Facilities	
Robert Brown	CTDOT - Consultant Design - Bridge	860-594-3207
Timothy Fields	CTDOT - Consultant Design - Bridge	860-594-3217
Glenn Elliott	FHWA	860-494-7577
Timothy Snyder	FHWA	860-494-7560
David Nardone	FHWA	860-494-7559
Eloise Powell	FHWA	860-494-7566
Ron Sacchi	URS	860-529-8882
Tim Young	URS	860-529-8882

### **Purpose of Meeting:**

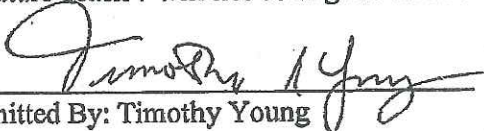
Review proposed project scope and funding mechanisms for progressing the Preliminary and Final Design for the replacement of the Atlantic Street Bridge based on an accelerated bridge replacement strategy.

### **Discussions and Determinations:**

The Department of Transportation is reviewing proceeding with this project with a revised scope. The preliminary and final design will be based on the replacement of the bridge carrying Metro-North Railroad over Atlantic Street, and a new bridge carrying the I-95 NB exit traffic over Atlantic Street. Also included in the reconstruction of Atlantic Street and South State Street as required for roadway profile lowering. The project will utilize the accelerated project construction strategy based on a multi-track superstructure fabrication and transportation scenario. Project development is envisioned to utilize a design-bid-build format. The following comments generally related to environmental issues were discussed:

1. **Federal Highway Administration (FHWA) Involvement:** FHWA and CTDOT discussed potential funding for this project and the FHWA involvement anticipated under differing situations. It is believed at this time that the following conditions may apply:
  - a. The bridge carrying MNR over Atlantic Street, as well as the bridge carrying the relocated Exit Ramp over Atlantic Street, may be eligible for STP funding provided they are classified as improvements to Atlantic Street.

- b. The design for any changes to the exit ramp does not require FHWA approval if all work is outside the limits of the interstate and federal funds are not used. Limits of construction should begin after the termination of the gore area for the ramp.
  - c. It may be preferable for the Department to close the Preliminary Engineering Study project, which studied all five bridges, and create a new project for moving forward with the Atlantic Street Bridge replacement only, as opposed to including all three bridge replacements in one project. This would limit any funding requirements related to one of the other bridges only from being applied to the Atlantic Street Bridge if all three are in one project.
  - d. Funding for construction and acquiring Rights of Way for the Atlantic Street Bridge replacement need to be identified in order to release Preliminary Design funding. If the funding is to come from funds already allocated to regional planning agency projects, they reallocation of funding to pay for Atlantic Street needs to be identified.
2. Pedestrian Walkway: The pedestrian walkway proposed at the south of the Atlantic Street Bridge needs to be ADA accessible. URS will include in their scope an elevator on the east side of the walkway. Extending the walkway on an elevated structure on the west side to meet up with the Stamford train station platforms will impact an existing MNR access pathway to the tracks. This needs to be discussed further between CTDOT and MNR.
3. Manhattan Street Development: A private developer is working on a development to be located on Manhattan Street, which may include a connection between the development and the pedestrian access on the bridge. CTDOT will contact the developer to apprise them of the project and open discussions.
4. Future Track 7: The potential of adding a future Track 7 at the north side of the tracks was discussed. A future Track 7 was previously included in the study reports, but not included in the PD/FD scope of services as requested by CTDOT. URS will update the scope to include increasing the bridge width to include the future Track 7. The retaining walls supporting the railroad will need to be relocated north to accommodate future Track 7. URS will investigate the construction staging needed for construction of the wider bridge and relocated retaining walls, along with the impact on available work areas for the accelerated construction, due to including the future Track 7. FHWA noted that the widening required to accommodate future Track 7 will not be eligible for federal funding.

  
Submitted By: Timothy Young

12/27/12  
Date:

  
Reviewed By: Robert Brown

12/27/12  
Date:

  
Reviewed By: Timothy Fields

12/27/12  
Date:



# Stamford Reliability Cable Project

## PROJECT UPDATE

### Proposed Underground Transmission Line

---

November 27, 2012

10:00 AM

Government Center

888 Washington Blvd, Stamford, CT

7<sup>th</sup> Floor – Engineering Conference Room



# Meeting Objective

Stamford  
Reliability Cable Project

- To engage key stakeholders via periodic project updates
- To recap project timeline and key accomplishments to date
- To present project status on:
  - Outreach
  - Communication & Media Relations
  - Siting & Permitting
  - Engineering
- To acquire feedback and direction from key stakeholders to help advance the project

# Agenda

- INTRODUCTIONS – PROJECT OVERVIEW - A. Mathur
  - Project Scope
  - Proposed Cable Routes
  - Project Timeline
- OUTREACH & SITING – C. Swan
  - Community Outreach
  - Municipal Consultation Filing (MCF)
  - Connecticut Siting Council (CSC) Application
- COMMUNICATIONS & MEDIA RELATIONS – K. Blint / F. Poirot
  - Open House
  - Press Release (Stamford Advocate)

# Agenda

Stamford  
Reliability Cable Project

- ENGINEERING – A. Mathur
  - Underground Line Design
  - Proposed Easements
- ROUNDTABLE – All

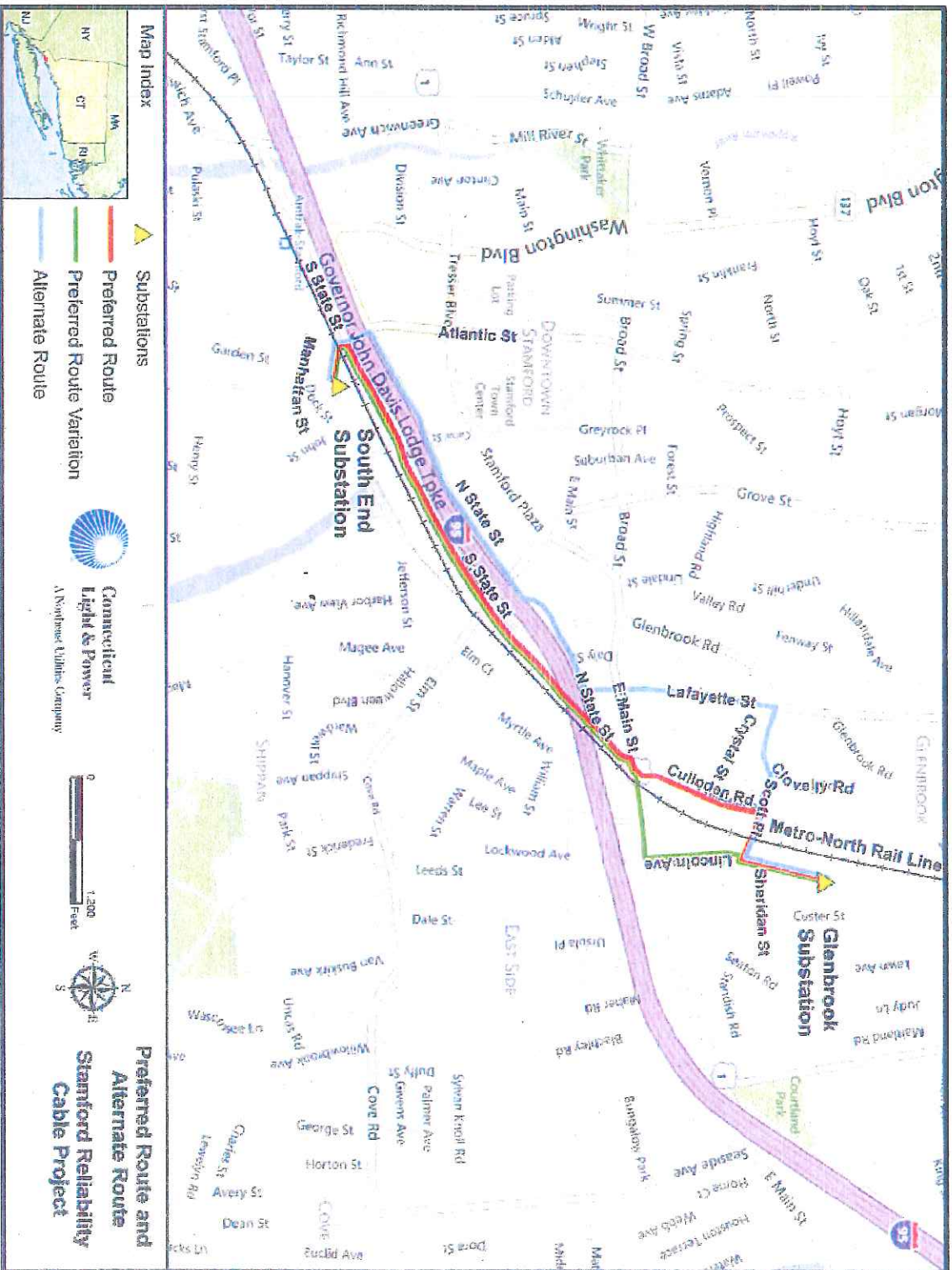
# Project Scope

Stamford  
Reliability Cable Project

- New 115 –kilovolt (kV) underground transmission circuit in Stamford.
- Approximately 1.5 miles from Glenbrook Substation to South End Substation via Preferred Route.
- Substation equipment upgrades at South End Substation and Glenbrook Substation installed entirely within their existing fenced-in areas.

# Proposed Cable Routes

**Stamford**  
Reliability Cable Project



# Project Timeline

Stamford  
Reliability Cable Project

2011	2012	2013	2014
<ul style="list-style-type: none"> <li>✓ Preliminary Survey Engineering for Cable Route</li> <li>✓ Begin Municipal Outreach</li> </ul>	<ul style="list-style-type: none"> <li>✓ Continue Municipal Outreach</li> <li>✓ ISO-NE Project Approval</li> <li>✓ Cable Route Analysis</li> <li>✓ Begin Detailed Line Engineering &amp; Design</li> <li>✓ Municipal Consultation Filing</li> <li>✓ Begin Customer Communications</li> <li>✓ Begin Real Estate and Property Management (Easements)</li> </ul>	<ul style="list-style-type: none"> <li>□ File CSC Application</li> <li>□ Procure Long Lead Material</li> <li>□ Begin Substation Engineering &amp; Design</li> <li>□ CSC Data Requests</li> <li>□ Complete Detailed Engineering &amp; Design</li> <li>□ CSC Hearing</li> <li>□ Local, ConndOT and Metro-North Rail Road Permit Approvals and/or Agreements</li> </ul>	<ul style="list-style-type: none"> <li>□ CSC Approval</li> <li>□ PURA Method and Manner</li> <li>□ Development &amp; Management Plan</li> <li>□ Substation Upgrades</li> <li>□ Line Construction</li> <li>□ Testing &amp; Commissioning</li> <li>□ Project In Service</li> </ul>

# Community Outreach

Stamford  
Reliability Cable Project

<p>State Senator State Representatives</p>	<p>South West Region MPO (SWRMPO)</p>	<p>East Side Partnership &amp; Businesses</p>
<p>Business Council Of Fairfield County</p>	<p>Stamford Housing Authority</p>	<p>Stamford Chamber of Commerce</p>
<p>Stamford Partnership Board of Directors</p>	<p>Neighborhood Associations - Glenbrook &amp; South End(CTE)</p>	<p>Stamford Board Of Representatives</p>



# Municipal Consultation Filing (MCF)

Stamford  
Reliability Cable Project

- Filed with City of Stamford on September 10, 2012

## Connecticut Siting Council (CSC) Application

- Draft document in development
- To be filed in Q1 – 2013
- Public hearing to be scheduled by CSC, likely in early 2013

# Communications

Stamford  
Reliability Cable Project

AUGUST 2012	SEPTEMBER 2012	DECEMBER 2012	JANUARY 2013
<ul style="list-style-type: none"> <li>✓ Send abutters a brochure introducing them to the proposed project.</li> <li>✓ Brochure will describe the project, schedule and a map of the proposed route.</li> <li>✓ Customers will be directed to the Transmission Information Line if they have questions or comments.</li> </ul>	<ul style="list-style-type: none"> <li>✓ Send Stamford customers a bill insert explaining the proposed project (two mailings)</li> <li>✓ Developed and launched <a href="http://www.stamfordcable.com">www.stamfordcable.com</a> website</li> </ul>	<ul style="list-style-type: none"> <li>□ Send abutters a postcard notification about the Open House to be held in January, 2013.</li> <li>□ Issue a news release inviting residents to the Open House</li> </ul>	<ul style="list-style-type: none"> <li>□ Host the project Open House</li> <li>□ Follow up with customers on any questions or comments stemming from the Open House</li> <li>□ Provide customers with a notification that CL&amp;P has filed an application for the project with the Connecticut Siting Council</li> </ul>

# Open House

Stamford  
Reliability Cable Project

- **DATE:** January, 2013 (Date TBA)
- **TIME:** 6PM – 8PM
- **VENUE:** Stamford Government Center Lobby
- **DISPLAYS:** Informational Kiosks
- **PARKING:** Government Center Garage

# Open House – Plan for Kiosks



**Welcome:** Greet Guests and provide project handouts

## Project Need

Highlight project benefits to City of Stamford residents

## Route Locator

Generate large maps depicting Preferred and Alternate Routes

## Underground Transmission

Displays with Cable Samples, Splice Vaults, Duct Bank Installation

## EMF

Electric and Magnetic Fields and their affects

## Emergency Preparedness

Highlight CL&P's readiness and updated approach

## Tree Trimming

CL&P Standards and necessity to maintain system reliability

## Exit

: Provide residents with a project comment card, which could be collected or returned by mail

# Line Engineering

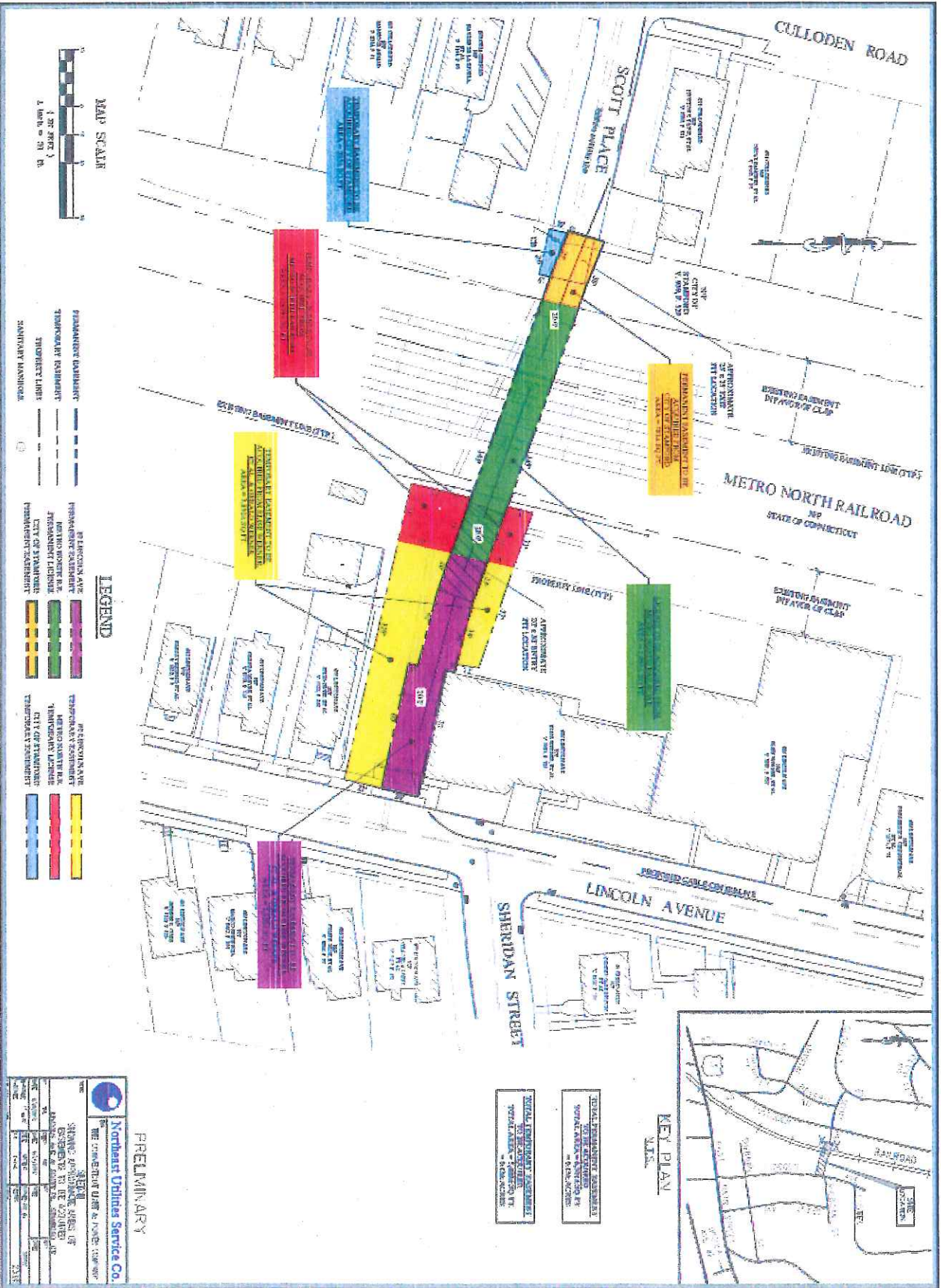


Stamford  
Reliability Cable Project

- Route Analysis
- Jack and Bore Design
- Vault Locations
- Cable Specification
- Potholing

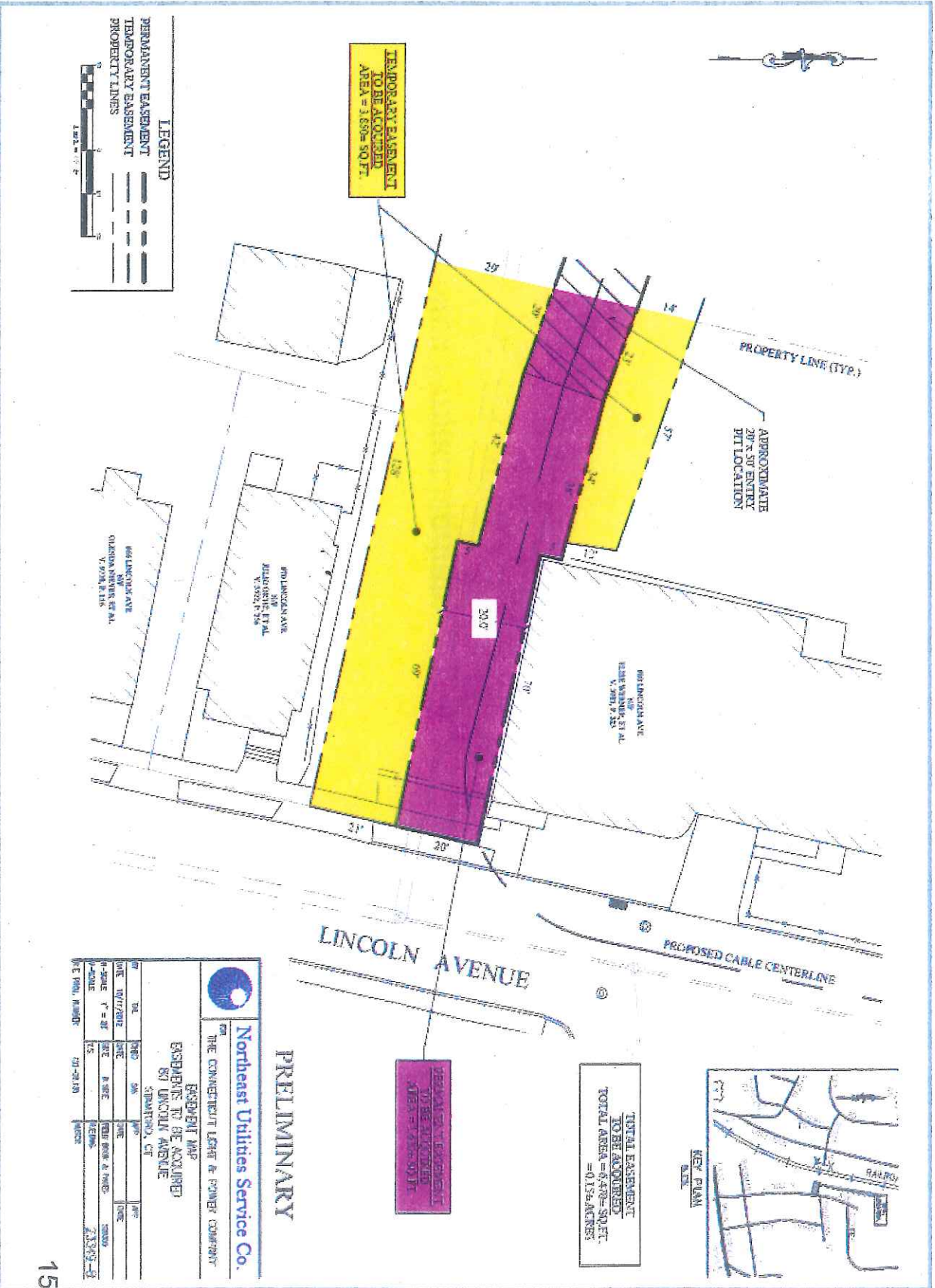
# Proposed Easements – 80 Lincoln Ave

Stamford  
Reliability Cable Project



# Proposed Easements – 80 Lincoln Ave

Stamford  
Reliability Cable Project



**LEGEND**

PERMANENT EASEMENT

TEMPORARY EASEMENT

PROPERTY LINES

**PRELIMINARY**

**Northeast Utilities Service Co.**

THE CONNECTICUT LIGHT & POWER COMPANY

**EASEMENT MAP**

**EASEMENTS TO BE ACQUIRED**

**80 LINCOLN AVENUE**

STAMFORD, CT

DATE	BY	FOR	DATE	BY	FOR
01/17/2012	...	...	01/17/2012	...	...
01/17/2012	...	...	01/17/2012	...	...
01/17/2012	...	...	01/17/2012	...	...
01/17/2012	...	...	01/17/2012	...	...

DATE PLOTTED: 01/17/13

PROJECT: 23393-15

# Roundtable – All

- Project Coordination
- Action Items
- Upcoming Meetings
- Schedule Next Project Update



# Project Coordination

Stamford  
Reliability Cable Project

SPONSOR	PROJECT NAME	PROPOSED CONSTRUCTION
CL&P	Stamford Reliability Cable Project	START: Q2 – 2014 FINISH: Q4 – 2014
ConnDOT	Accelerated Bridge Replacement Project	START: Q4 – 2014 FINISH: Q4 – 2016
City of Stamford	Stamford Urban Transitway PHASE II	START: Q4 – 2012 FINISH: Q4 – 2014



Stamford  
Reliability Cable Project

# Open House

## January 8, 2013

Display Kiosks

RECEIVED  
JAN 31 2013  
CONNECTICUT  
SITING COUNCIL

- OH.1 - Welcome/Comments
  - Comment Card, SRCP Brochure and Bill Insert
- OH.2 - Route Maps and Video
  - Route Maps and DVD
- OH.3 - Needs/Benefits
- OH.4 - Proposed Upgrades
- OH.5 - Underground Technology
  - Photo of Splice Vault Display
- OH.6 - Electric Magnetic Fields
  - Information Sheet
- OH.7 - Emergency Preparedness/Tree Trimming
  - Information Sheets, Customer Map and DVD

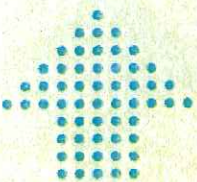
# Welcome Kiosk

TRIM LINE



## Welcome

### Comment Cards



**Please provide your comments  
on the Proposed Project.**

**Your comments will be shared with  
the Connecticut Siting Council  
and your town officials.**

www.transmission-nu.com

Call 1-800-793-2202

# Questions?

Connecticut  
Light & Power  
A Northeast Utilities Company

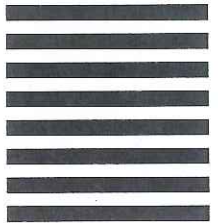


NO POSTAGE  
NECESSARY  
IF MAILED  
IN THE  
UNITED STATES

## BUSINESS REPLY MAIL

FIRST-CLASS MAIL PERMIT NO. 61070 HARTFORD CT

POSTAGE WILL BE PAID BY ADDRESSEE



CL&P – TRANSMISSION  
ATTENTION: KATIE BLINT  
PO BOX 270  
HARTFORD, CT 06101-9975



Connecticut  
Light & Power  
A Northeast Utilities Company

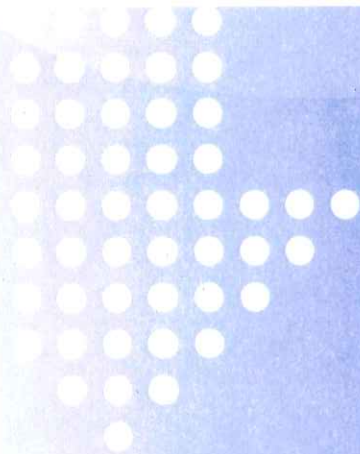
### Stamford

## Reliability Cable Project

OPEN HOUSE EVENT

January 8, 2013

Public Comment Card





## How Connecticut benefits

CL&P's transmission projects provide many benefits for Connecticut, including:

- > Improving electric service reliability
- > Supporting our quality of life
- > Allowing access to competitively priced, diverse energy sources
- > Strengthening the grid to improve cyber security
- > Making the state more attractive to business
- > Promoting a competitive marketplace for power
- > Preparing Connecticut for continued growth.



**Connecticut  
Light & Power**

A Northeast Utilities Company

P.O. Box 270  
Hartford, CT 06141-0270

Address Correction Requested

Planning for your electric needs –  
learn more about the Stamford  
Reliability Cable Project



**Connecticut  
Light & Power**

A Northeast Utilities Company

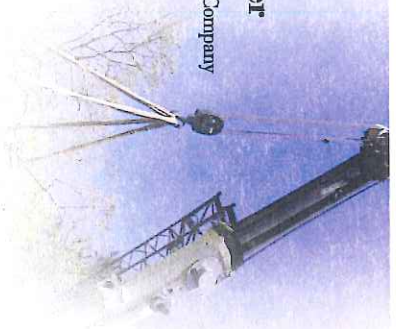


**We plan to strengthen the  
electric transmission system  
in your neighborhood...**



**Connecticut  
Light & Power**

A Northeast Utilities Company

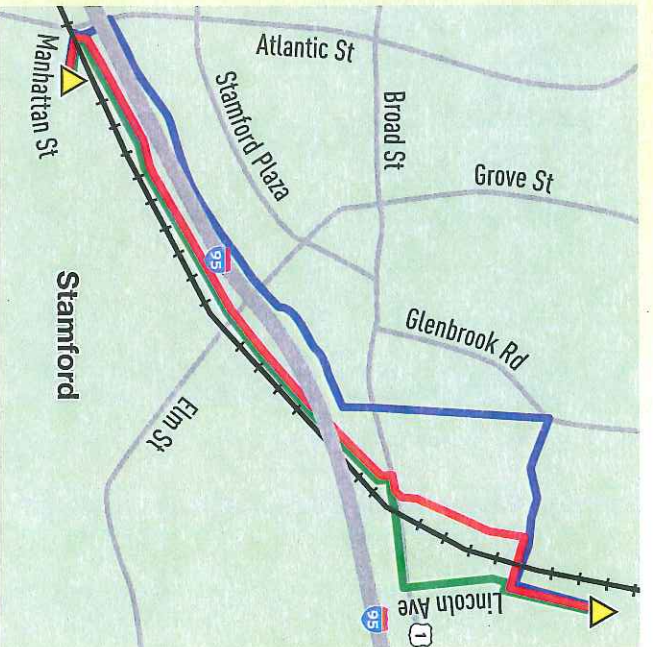


## We are proposing work in your area

You're receiving this notice because Connecticut Light & Power (CL&P) is proposing under-street transmission line work in your neighborhood.

The Stamford Reliability Cable Project is needed to address increasing customer demand for a more reliable electric supply in southwest Connecticut.

The preferred route would extend approximately 1.5 miles from Glenbrook Substation on Lincoln Avenue to South End Substation on Manhattan Street. Except for minor deviations, the underground transmission line would be located within existing public roadway rights-of-way.



- Preferred Route
- Preferred Route With Variation
- Alternate Route
- ▲ Substation
- + + + + Railroad

The map above depicts the proposed route of the new 115-kV underground transmission line.

Making investments in the region's electric infrastructure ensures that homes and businesses receive safe, reliable power today and in the future.

What's happening	Where	When*	What we're doing
We plan to construct a new 1.5-mile, 115-kilovolt (KV) underground transmission line on the south side of Stamford.	Under city streets between substations on Lincoln Avenue and Manhattan Street.	Fourth quarter 2012	Submitting an application to the Connecticut Siting Council (CSC)
		Fourth quarter 2013	CSC decides on the proposal
		First quarter 2014	Construction begins, if the CSC has approved CL&P's application
		Fourth quarter 2014	New underground line is placed in service

\* The schedule is subject to change due to timing of required approvals, weather and other unexpected circumstances. Stamford Reliability Cable Project. CD9121.3M AM

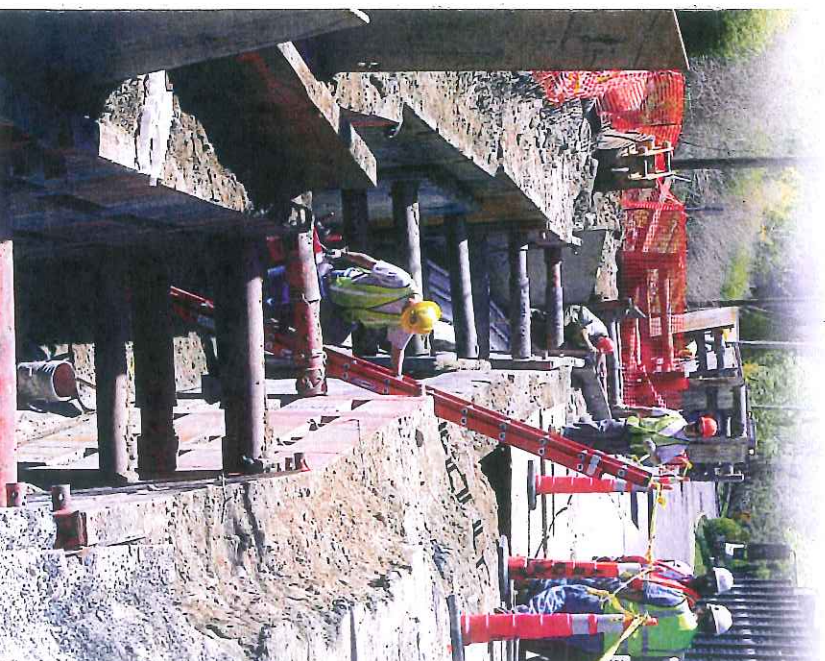
## Contact us

Keeping the lines of communication open is an important part of our work in your community. Feel free to contact us with any questions or concerns you may have:

- > Send an e-mail to [TransmissionInfo@nu.com](mailto:TransmissionInfo@nu.com).
- > Visit our website at [www.StamfordCable.com](http://www.StamfordCable.com).
- > Call us at 1.800.793.2202.



**Stamford  
Reliability Cable Project**



TRIM LINE



Connecticut  
Light & Power  
A Northeast Utilities Company

# Route Maps







## Needs & Benefits

### How Stamford benefits

CLP's transmission projects provide many benefits for Connecticut, including:

- Improving electric service reliability
- Supporting our quality of life
- Allowing access to competitively priced, diverse energy sources
- Strengthening the grid to improve cyber security
- Making the state more attractive to business
- Providing a competitive marketplace for power
- Preparing Connecticut for continued growth



**Commercial  
Light & Power**  
A National Grid Company

# Proposed Upgrades

## What's happening

What's happening	Where	When	What we're doing
<p><b>We plan to construct a new 1.5-mile, 115-kilovolt (KV) underground transmission line on the south side of Sylvania.</b></p>	<p>Under city streets between intersection of Lakeshore Avenue and Lincoln Street</p>	<p>2012-2014</p>	<p>Supporting an expansion of the Commercial Light &amp; Power's</p>
	<p>See the map on the adjacent page</p>	<p>2012</p>	<p>to meet the needs of our customers in the region.</p>

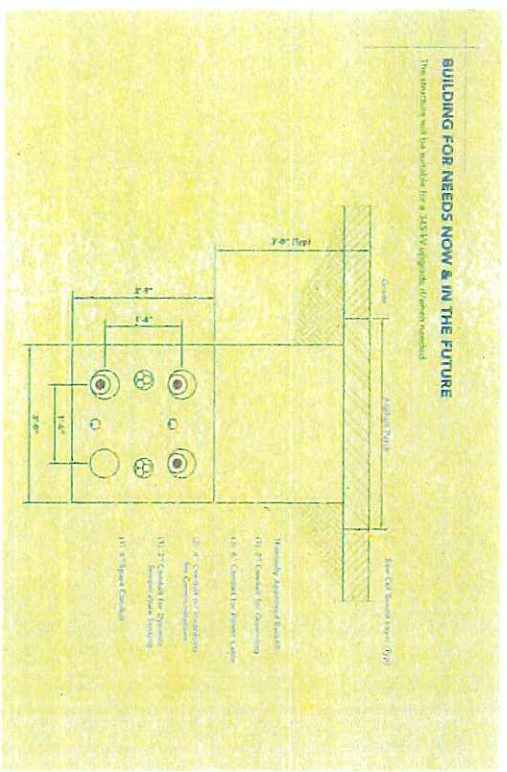
A Street within a subject to change due to timing of required permits, weather and other unexpected circumstances. Street names and page count may

TRM LINE



Commercial  
Light & Power  
A Northern Electric Company

# Underground Technology



# Underground Splice Vault Display





Cammedant  
Light & Power  
A Merleau Ltd. Company

# Electric & Magnetic Fields

## WHAT IS EMF?

The term EMF refers to **electric and magnetic fields** associated with electricity. They are invisible lines of force that surround any electrical device. Sources of EMF include appliances, nearby power lines and equipment, and electrical wiring.

**Electric Fields** are produced by voltage and are stronger when voltages are higher. Electric fields surround an electric device when it is plugged into an outlet, even when the electric device is turned off. The electric field is measured in volts per meter (V/m), or kilovolts per meter (kV/m), where 1,000 = 1 kV.

**Magnetic Fields** are produced when electric current flows through wires or electric devices, that is, when the flow of electric device is turned on. They are commonly measured in units called gauss (G), or in milligauss (mG), where 1 G = 1,000 mG.

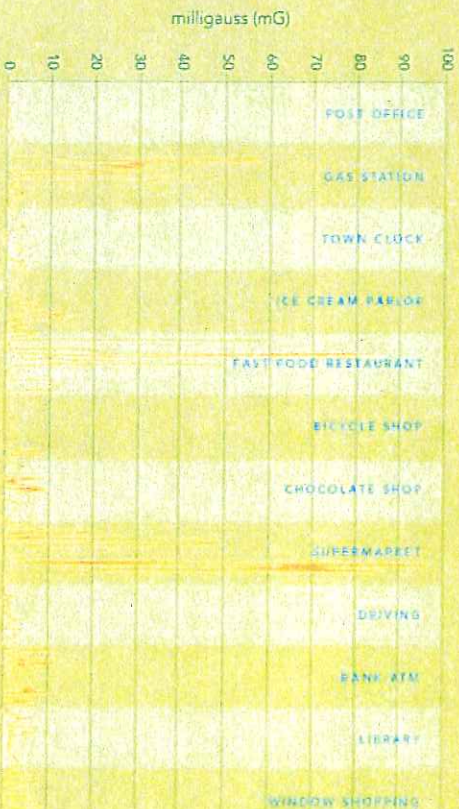
The levels of both electric and magnetic fields diminish with increasing distance from the source.

SOURCE: "EMF - Environmental Magnetic Fields Associated with the Use of Electric Power," a report prepared in June 2000 by the National Institute of Environmental Health Sciences, National Institute of Health.



## MAGNETIC FIELDS ARE FOUND EVERYWHERE Exposures Measured in a Typical New England Town

We all pass through magnetic fields of varying strength every day.



TRIM LINE



Connecticut Light & Power  
A Northern Utilities Company

Are You Ready?



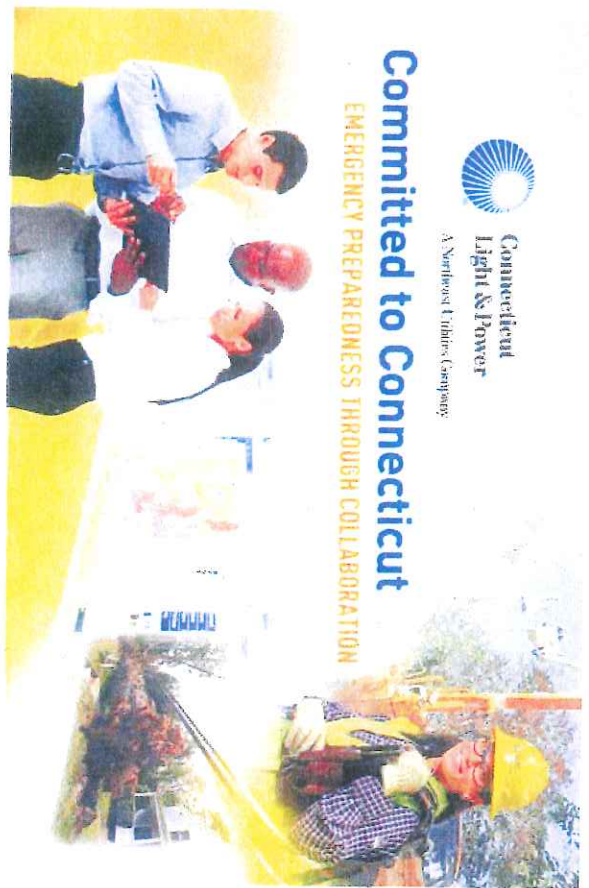
Connecticut Light & Power  
A Northern Utilities Company

Emergency Preparedness



Connecticut Light & Power  
A Northern Utilities Company

Tree Trimming



Committed to Connecticut

EMERGENCY PREPAREDNESS THROUGH COLLABORATION



Connecticut Light & Power  
A Northern Utilities Company





Connecticut  
Light & Power

A Northeast Utilities Company

# Tree Trimming

Helping to Improve Electric Reliability



Trees too close to power lines are the single largest cause of power outages!

Trees and power lines don't mix. When they touch, it can cause power outages, fires and downed lines.

It's important to trim or remove trees that have grown too close to energized power lines to help provide reliable electric service. Better tree clearance also enables our line crews to find and repair problems faster.

### Notification process

When trees on your property have grown too close to energized power lines, Connecticut Light and Power (CL&P) will notify you by letter of our intention to trim or remove the trees. If you have any questions regarding the proposed work, you must call us within 15 days of receiving the notice. If you do not respond within 15 days, CL&P will proceed with the work.

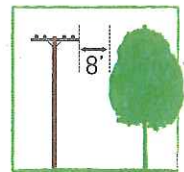
### Professionals do the work

CL&P hires only professional, experienced tree contractors. All tree work is performed in accordance with standards established by the American National Standards Institute and the International Society of Arboriculture.

Trees are trimmed to obtain the following clearances:

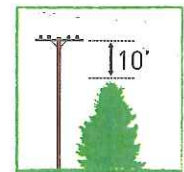
### Side Clearance

Any limb extending within 8 feet of clearance will be cut back at a main branching point, or at the trunk, leaving no stub, even if that point is more than 8 feet from the wires.



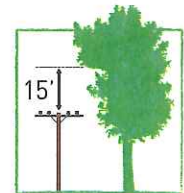
### Under Clearance

Any limb that is less than 10 feet below the wire will be trimmed. Additionally, all brush that is 12 feet tall is typically removed, as are tall-growing trees with trunks of 6-inches diameter or less at chest height.

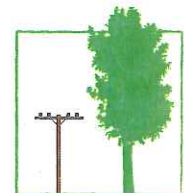


### Overhead Clearance

Any limb that is less than 15 feet above the wire will be trimmed.



In certain instances above main lines, all limbs above the wire may be removed.






Certain main branches on older trees can remain inside of the minimum clearances, but this depends on the health of the tree, rate and direction of growth and likelihood of its limbs reaching the wires.

## A plan for all seasons

We trim trees throughout the year. It's a continuing effort to keep trees in our service area (which covers nearly 17,000 miles of wire) from growing too close to power lines and disrupting service. Trees that are a risk to reliable service are cut back far enough to keep them away from power lines for at least four to six years. Our tree trimming program is one way we provide safe and reliable electric service to our 1.2 million residential and business customers in Connecticut.

### Plan before you plant

Low-growing trees Up to 25 feet in height	
	May be planted near roadside power lines
	Crabapple, dogwood, hawthorn, plum and Japanese maple
Medium-sized trees 25-45 feet in height	
	Should be planted 15-30 feet from power lines
	Arborvitae, flowering cherry, magnolia, hornbeam and shadblow
Large-growing trees More than 45 feet in height	
	Should be planted at least 30 feet from power lines
	Oak, maple, locust, spruce and pines

### Any questions?

For more information about our tree trimming program, call 1.800.286.2000. Ask for the arborist responsible for your town, or visit our website at [www.cl-p.com](http://www.cl-p.com).



**Connecticut  
Light & Power**

A Northeast Utilities Company

### Pathfinder® II Herbicide Treatment

Occasionally, trees and brush that will grow tall enough to interfere with the electrical lines must be removed. Low-growing shrubs, forbs and grasses are not treated, resulting in a low-growing plant community. Hardwood trees that can re-sprout from the cut stump are treated with an herbicide to prevent sprouting.

Treatment is selectively applied with a handheld spray bottle by state licensed and certified applicators in accordance with all applicable laws and regulations. The herbicide has been tested and is approved by the U.S. Environmental Protection Agency and the Connecticut Department of Environmental Protection. It is applied only to the outer edge and sides of stumps, as shown.



Connecticut General Statutes [22a-66a] requires that certain herbicide label information be provided to the property owner where herbicides will be used. This information is included below.

**Active Ingredient:** triclopyr: 3,5,6-trichloro-2-pyridinyloxyacetic acid, butoxyethyl ester  
EPA Reg No 62719-176.

**Keep Out of Reach of Children.**

### CAUTION PRECAUCION

Si usted no entiende la etiqueta, busque a alguien para que se la explique a usted en detalle.  
If you do not understand the label, find someone to explain it to you in detail.

### Precautionary Statements

#### Humans and Domestic Animals

**Harmful if swallowed; prolonged or frequent skin contact may cause allergic reactions in some individuals.**

#### First Aid

**If swallowed:** Call a poison control center or doctor immediately for treatment advice. Have person sip a glass of water if able to swallow. Do not induce vomiting unless told to do so by a poison control center or doctor. Do not give anything by mouth to an unconscious person.

#### Environmental Hazards

This pesticide is toxic to fish. Do not apply directly to water, or to areas where surface water is present or to intertidal areas below the mean high water mark. Do not contaminate water when cleaning equipment or disposing of equipment washwaters.

This chemical has properties and characteristics associated with chemicals detected in groundwater. The use of this chemical in areas where soils are permeable, particularly where the water table is shallow, may result in groundwater contamination.

#### Entry Restrictions

Do not enter or allow others to enter the treated area until sprays have dried.

In case of emergency endangering health or the environment involving this product, call 1.800.922.5994. If you wish to obtain additional product information, visit DOW Agro Science's website at [www.dowagro.com](http://www.dowagro.com).

© Trademark of DOW Agro Science LLC





Connecticut  
Light & Power  
A Northeast Utilities Company

## Emergency preparedness tips

### Are you ready for a storm?

A severe storm can cause power outages, and the best time to prepare is before a storm strikes. It takes at least two things to get through the effects of a severe storm: preparation and patience. Not only might they make the situation tolerable, sometimes they may actually save your life. Our goal is to get your power back on as quickly and safely as possible.

If you lose power, report your outage by calling 800.286.2000  
or by using our online application at  
[www.cl-p.com/StormCenter](http://www.cl-p.com/StormCenter)



#### Stay away from downed power lines

Keep your distance from any downed power lines, and call 911 to report them to the police or fire department. Treat all wires – even those that are hanging or downed – as if they are “live” (energized). Don’t drive over downed lines, and if a downed line is in or near water, keep your distance from the water, even a little puddle. And whether a power line is down or not, don’t touch anything that might be in contact with it, such as a tree limb.



#### Check medications that require refrigeration

Be sure you know if they will be affected by a prolonged interruption of power. You may want to talk with your pharmacist. You may also want to keep a small cooler handy.

#### Set your refrigerator and freezer to their coldest settings

Do this a half day or so before the storm is scheduled to hit. Be sure to return the settings to their normal position as soon as electricity has been restored.

#### Get extra ice

Ice helps maintain cold temperatures in your freezer and refrigerator. Use plastic bags filled with ice (or water, if you have enough time to freeze it) in the freezer. Use block ice, if possible, in the refrigerator. And should the ice melt, you can drink the water.



#### Set aside water

This is vital if you depend on a water pump that might be disabled during a storm. Sanitize and fill spare containers with water for drinking. Fill your bathtub with water for use in the toilet. A bucket of water poured in the toilet bowl is all that’s needed for flushing.



### Customers with life-support equipment

If you or someone in your household relies on electrically operated life-support equipment, you need a backup plan to cope with power outages.

- An alternate source of electric power such as a battery backup system, an uninterruptible power supply or a properly installed generator for the life-support equipment
- Emergency telephone numbers (doctor, fire, police and ambulance)
- A procedure to vacate your home during a prolonged outage



### Be prepared to cook outside

It is possible that your stove will not work, so you may wish to use your backyard grill for cooking. However, please beware! Do not bring the grill indoors. A grill without proper ventilation can be deadly.

### Prepare alternative sources of heat or find an emergency shelter

Even a gas or oil furnace needs electricity to operate, so if you have a fireplace or wood stove as an alternative heat source be sure you have enough wood. A portable electric generator can be a valuable backup source of power to operate your furnace and appliances. Just be sure you have it installed by a licensed electrician. If you have no alternative heat, find out where an emergency shelter will be, if it is needed. Call your local fire or police department or local Red Cross chapter. In frigid weather, if your power is likely to be out for more than a few days, you may want to call your plumber and ask about draining your home's water pipes so they don't freeze and burst.



### Stock up on batteries and easy-to-prepare food

Give yourself the greatest flexibility in meal preparation, and the greatest comfort once the sun goes down. Don't forget flashlights (one for each person in your family), batteries and a manual can opener.



### Unplug sensitive equipment

Voltage irregularities can occur for any number of reasons during or after a storm, especially if there has been damage on or near your home. The safest thing to do is to unplug any sensitive electrical devices [e.g., TV, DVD Player, stereo, microwave, computer, iPod, answering machine, garage door opener]. Planning ahead, you may wish to consider surge suppressors. They can be purchased either for individual pieces of equipment, or for your entire house.

### Fill your car's gas tank

During an outage, gas stations may not be operating, so it's important to fill your tank before a storm. You just never know where you might need to go or how long it might take to get there.

### Plan to live without everyday tools that need electricity

For example, be sure you know how to shut and open your electric garage door manually. And if you keep your cellar free from flooding by using a sump pump, be prepared to call your local fire department for help if you lose power for an extended period.



### Keep a battery-operated radio handy

Be ready to stay informed of the storm's progress, as well as safety tips and clean-up operations. Don't forget fresh batteries.

### It's also a good idea to have some extra cash on hand and to fully charge your mobile phone. By following these tips and preparing your own emergency kit before a storm strikes, you will be better able to weather the storm.

For more information, visit [www.cl-p.com/StormCenter](http://www.cl-p.com/StormCenter) where you'll also find links to helpful resources from the American Red Cross and the Federal Emergency Management Agency.



<http://www.facebook.com/CTLightandPower>



<http://twitter.com/ctlighandpower>



<http://www.youtube.com/user/CTLightandPower>

CTLightandPower



Connecticut  
Light & Power

A Northeast Utilities Company

IMPROVING THE ENVIRONMENTS YOU LIVE IN

## Portable Generator Safety Tips

Portable home electric generators can provide peace of mind in the event that there is a loss of power. The Connecticut Light and Power Company encourages customers to understand how to properly use these machines to minimize electrical and carbon monoxide hazards.

Please keep the following safety tips in mind:

- **A portable electric generator should be used only when necessary, and only to power essential equipment.**
- **Read and adhere to the manufacturer's instructions for safe operation as well as state, local and national fire and electric codes.**
- **Make sure your generator is properly grounded according to the manufacturer's manual.**
- **Never use a generator indoors or in enclosed or partially enclosed spaces.**  
To avoid carbon monoxide hazards, generators should never be used in enclosed spaces. Units should be located far from doors, windows and vents that could allow carbon monoxide to come indoors, which could be deadly. Install battery-operated carbon monoxide alarms in your home, following manufacturer's instructions.
- **Use the proper power cords.**  
Only use heavy-duty, outdoor-rated power cords with an adequate wire gauge. Never use extension cords with exposed wires or worn shielding.
- **Don't connect the generator directly to your home's wiring.**  
Have a qualified electrician connect the generator with a transfer switch so that it is not connected directly to your home wiring. If not installed properly, generators can feed electricity back into power lines that are connected to your home, and pose a deadly situation for electrical workers in the area.
- **Don't overload the generator.**  
Do not operate more appliances and equipment than the generator can handle, as overloading your generator can seriously damage your appliances and electronics.
- **Keep children and pets away from electric generators at all times.**
- **Always turn off the generator while you sleep or are away from home to avoid a possible fire hazard.**
- **Turn off all equipment powered by the generator before shutting down your generator.**

*To learn more about electrical safety, visit CL&P's Web site at [www.cl-p.com](http://www.cl-p.com), the U.S. Consumer Product Safety Commission at [www.cpsc.gov](http://www.cpsc.gov), Electrical Safety Foundation International at [www.esfi.org](http://www.esfi.org) or The National Fire Protection Association at [www.nfpa.org](http://www.nfpa.org).*

## CL&P Alert to Homeowners:

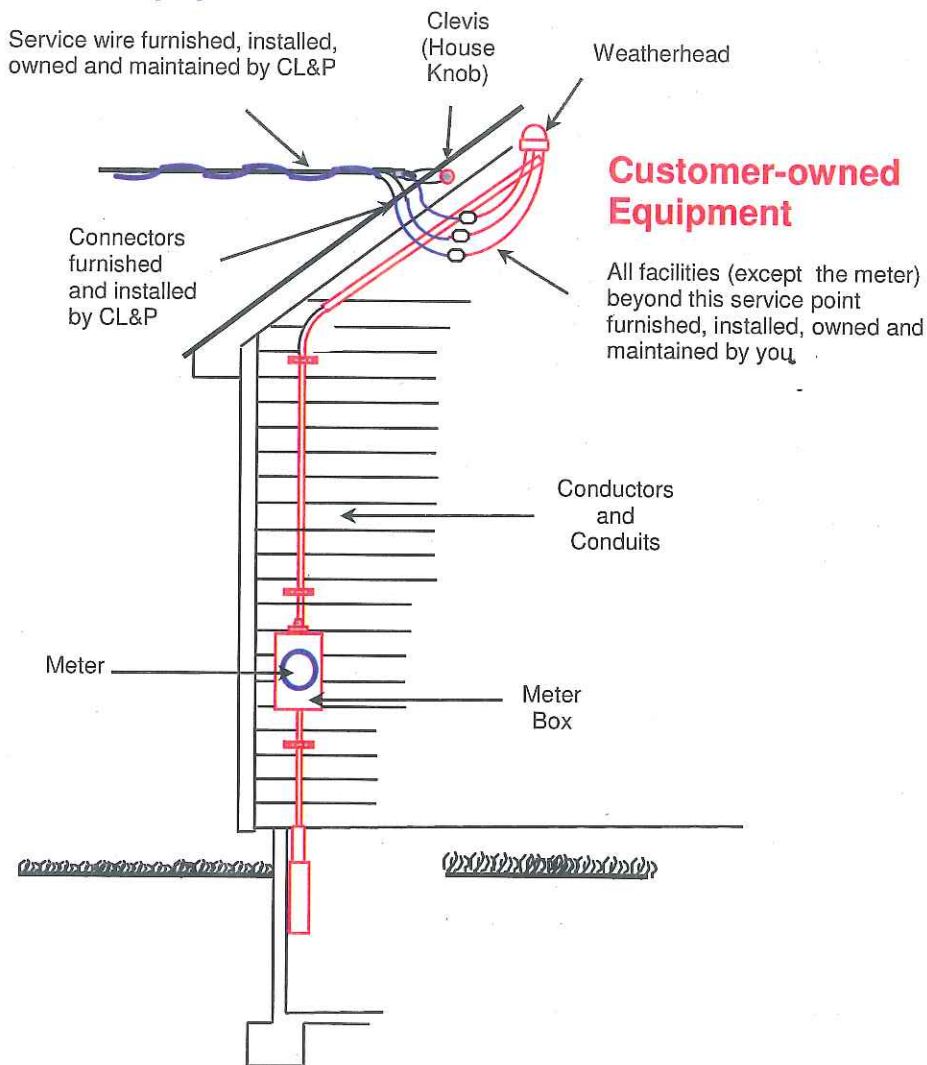
### **Damaged Customer Equipment Must be Repaired by Licensed Electricians Before Power Can Be Restored**

As CL&P works to restore power across the state, homeowners should be aware that any damage to customer-owned equipment must be repaired by licensed, professional electricians before we can reconnect power lines to your home.

CL&P will repair all equipment leading to your home, including a service wire and connectors. Homeowners are responsible for repairing all other equipment attached to a residence, including a clevis (house knob), weatherheads, conduits, conductors and the meter box. However, you are not responsible for damage to the meter.

If your home has sustained storm damage to customer-owned equipment, licensed electricians can be found through your local Yellow Pages or the State Department of Consumer Protection, Licensing Division, at [www.ct.gov/dcp/site](http://www.ct.gov/dcp/site)

### **CL&P Equipment**





**Connecticut  
Light & Power**

A Northeast Utilities Company

## **Your guide to the restoration process**

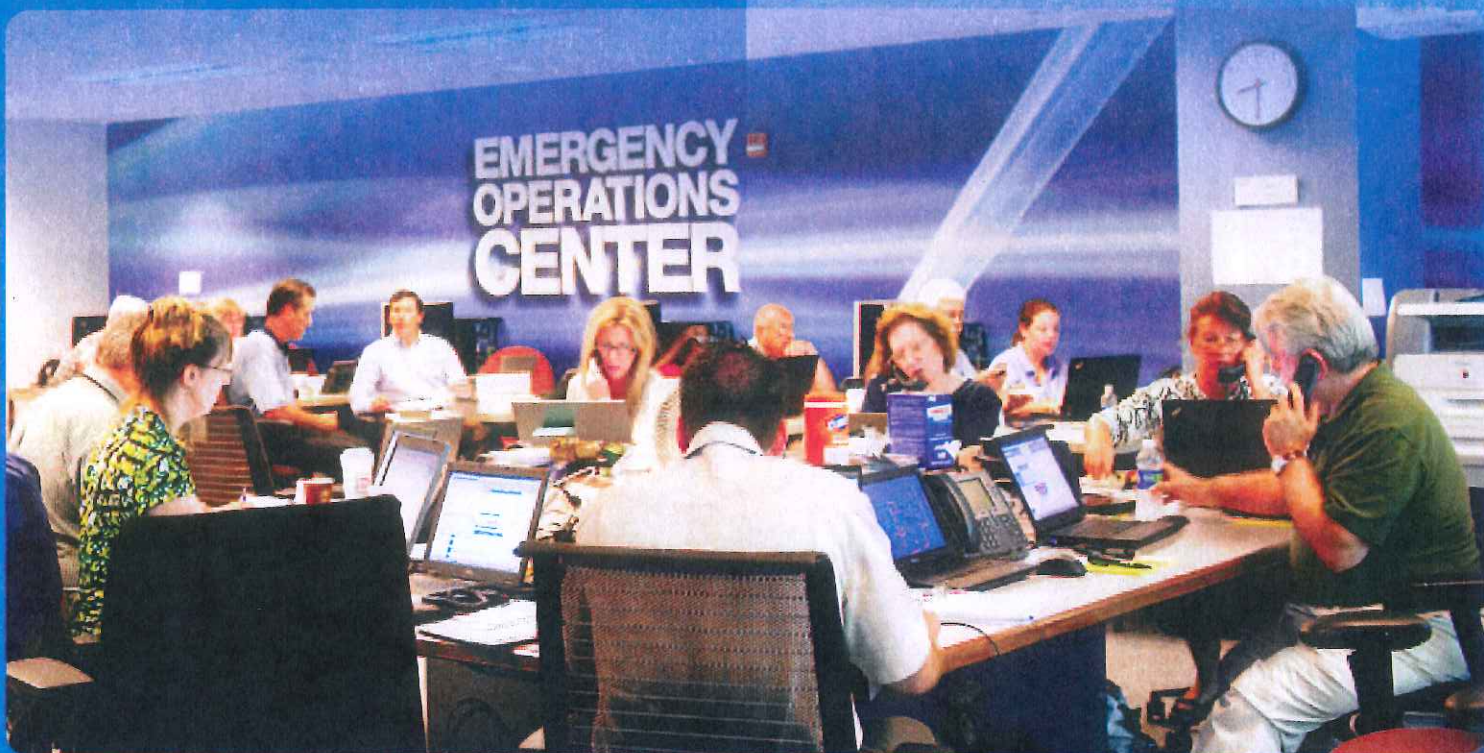
At one time or another, we've all experienced power outages. Usually, they take us by surprise.

As soon as an outage happens, we wonder, "When will the power come back on?" After a prolonged outage — following a storm, for example — we even tend to become impatient, asking, "What is taking so long?" or, "Other streets have power, why not mine?"

These are common reactions and common questions. We hope the following will give you a better understanding of what goes on when the power goes out.

For more information, visit [www.cl-p.com/StormCenter](http://www.cl-p.com/StormCenter)

## What CL&P does before a storm arrives



CL&P continuously monitors the weather. As soon as it is evident a major storm is approaching, CL&P administrative and field personnel are alerted to prepare support staff and crews for emergency duty. Other steps taken include:

- Notifying state officials of the situation and plans, and arranging for CL&P staffing at the State Emergency Operations Center in Hartford, if it is activated.
- Activating the Emergency Operations Center (EOC) at CL&P headquarters in Berlin, Conn., to coordinate overall operations.
- Informing customers through the news media of steps we are taking and providing advice as to how customers can prepare for outages.
- Activating emergency procedures at all regional system operation centers and establishing safety and damage assessment patrols and repair satellites in the regions.
- Checking supplies (poles, transformers, wire, etc.), deploying them where needed and making arrangements for procurement of additional material, if appropriate.
- Fueling and loading all company service and repair vehicles with equipment and supplies.
- Making arrangements with outside utility companies to provide backup crews.
- Initiating plans to house and feed personnel involved in the restoration.

In addition to their regular duties, employees assume storm assignments. An accountant, for example, may serve on a "wires down" team, keeping people away from dangerous downed wires. An attorney may serve on the food and lodging team, making arrangements for personnel involved in around-the-clock restoration efforts.

## What CL&P does after a storm hits

Our first priority is the safety of our employees and our customers.

### ASSESS

Immediately after a major storm, workers patrol to locate dangerous areas and take steps to make them safe by de-energizing downed wires, coordinating with towns to address emergencies and reopen roads. We determine the extent of outages and damages, primarily via CL&P patrols and civil authorities, and make a preliminary assessment of the time and resources necessary to restore power to most customers.

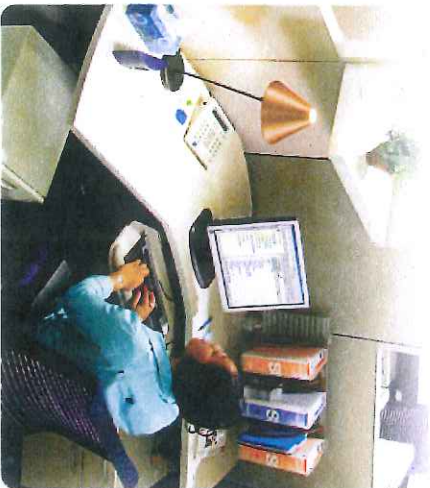


### Why don't I see any CL&P trucks?

If you don't immediately see a line truck in your area, it may be because crews are working on nearby equipment. It's also possible that the circuit feeding your street is miles away or in a different town. During a major restoration, CL&P brings in crews from other utilities and states to help us restore power, so you may see trucks in various sizes and colors from many different companies who are working to restore power.

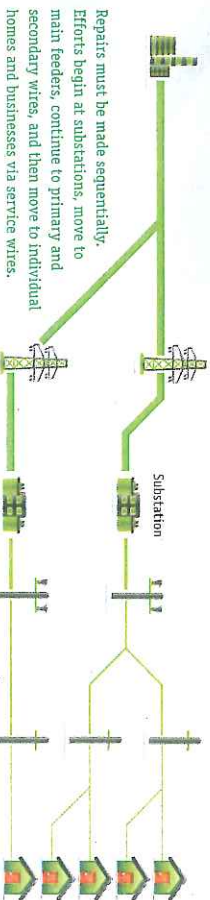
### COMMUNICATE

Employees answer phone calls from customers around the clock, work extended hours collecting outage reports, and advise the media and customers of what to expect, based on the information available at the time. We keep state, civil and military authorities apprised of conditions, as appropriate, and work with municipal officials to address particular concerns.



### Other streets in my neighborhood have power, why not mine?

You may be served by different equipment or circuit. It is also possible that there is an issue with your individual service wire.



### RESTORE

When widespread damage occurs, it is impossible to restore power to everyone at the same time.

We first restore power to substations and priority customers, which include police and fire stations, hospitals, water and sewage treatment plants, emergency shelters, and nursing homes.

Then, repairs are based on restoring power to the greatest number of customers in the shortest possible time.

It takes longer to restore power to more remote, less populated areas as we try to restore power to the biggest concentration of customers first. If you are furthest from the substation, you may be among the last to have power restored after a major storm.

Ultimately, our crews go street by street — in some cases, house by house — to restore individual services. We keep working until every home and business has electricity again.

Restoration speed depends on the extent and nature of the storm's damage, and often issues arise that can delay repair work. After a major storm, thousands of locations are without power, and restoration is a time-consuming job for our workers. It takes hours to replace a single broken pole before downed wires can be put back in service. Traffic tie-ups and trees across roads often delay crews from reaching their destination.

CL&P employs hundreds of crews and will add hundreds of employees from other utilities to work on restoration during a severe storm. They fan out over thousands of square miles of roads, many of which may initially be blocked, to cut limbs, remove trees, replace poles, and fix wires. They work extended hours to ensure that the entire system is made safe and your power is restored in a timely manner.

Our goal is to get your power back on as quickly and safely as possible.



# Plan before you Plant



## LOW-Growing Species



Dogwood



Flowering Crabapple



Japanese Maple

## MEDIUM-Growing Species



Arborvitae



Flowering Cherry



Magnolia

## TALL-Growing Species



Maple



Oak



Pine

## Plant the Right Tree in the Right Place for Electric Service Reliability

Trees and power lines don't mix. When they touch, it can cause everything from power outages, fires and downed lines, to safety hazards for people, wildlife and even the trees themselves.

Tree branches too close to power lines must be trimmed, and adequate trimming can't always be done in ways that retain the natural aesthetics of the tree.

Low-growing trees maturing up to 25 feet in height such as crabapple, dogwood, hawthorn, plum, and Japanese maple, can be planted near roadside power lines, in the **Red Zone**.

Medium-sized trees, maturing at heights of 25-45 feet, can be planted between **15 and 30 feet from the power lines**, in the **Yellow Zone**. Such trees include arborvitae, flowering cherry, magnolia, hornbeam, and shadblow.

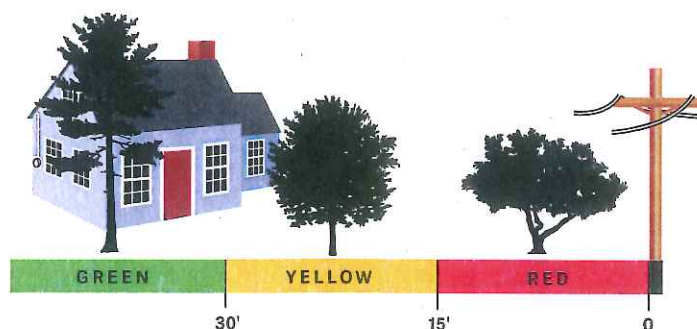
Large-growing trees, reaching heights of more than 45 feet, should be planted **at least 30 feet from power lines**, in the **Green Zone**. Oak, maple, locust, spruce, and pine are some examples.

## Plant Trees in the Proper Zone

**Green Zone:** Trees greater than 45' high

**Yellow Zone:** Trees 25 - 45' high

**Red Zone:** Trees less than 25' high



## Call Before You Dig!

Call **1-800-922-4455**

at least two full working days before digging. It's free, easy and the law.

Visit [www.cbyd.com](http://www.cbyd.com).



**Connecticut  
Light & Power**

A Northeast Utilities Company

For a full list of the right trees to plant in the right place, visit [www.cl-p.com](http://www.cl-p.com).





Stamford  
Reliability Cable Project

RECEIVED  
JAN 31 2013  
CONNECTICUT  
SITING COUNCIL

# Correspondence

- C.1 - Email from Oil Star with CL&P response on January 4, 2013
- C.2 - Press Release of the Open House, January 7 2013
- C.3 - Comment from Mr. Freundlich at Open House and CL&P response to Mr. Freundlich on January 26, 2013
- C.4 - Comment from Mr. Werner at Open House and CL&P response to Mr. Werner on January 26, 2013
- C.5 - Email from City of Stamford Signal Systems Engineer with CL&P response on January 10, 2013

From: Christopher C. Swan/NUS

To: "OIL STAR" <oilstar1984@yahoo.com>

Cc: "Christopher Swan" <swancc@nu.com>

---

Date: 01/04/2013 06:46 PM

Subject: Re: Underground Transmission Line

Frances -

I will be sure to submit this email as part of the record for the Siting Council to review

Chris Swan

From: OIL STAR [oilstar1984@yahoo.com]

Sent: 01/04/2013 02:54 PM PST

To: Christopher Swan

Subject: Re: Underground Transmission Line

Dear Mr. Swan,

In the event we are not able to attend the meeting regarding this project it is important that our voice and concerns were heard, nonetheless..

OIL STAR 942 E Main St. has been operating as a Fast Oil Change Center at this location since 1984. We are a while-u-wait, drive-thru service that depends on a traffic flow that enters our property from Lincoln Ave and exits onto East Main Street. Our concern is that the final route decision for this project could gravely impact our ability to operate.

The brochure received from CL&P indicates 3 possible routes ;

**Red** = Preferred route.....acceptable

**Green** = Preferred route w/variation.....would virtually shut us down !

---

**Blue** = Alternate route .....acceptable

I have included some photos and a site plan so that the directional flow could be more easily understood. There is no way to change the traffic flow as machinery and pumps are secured in place to accommodate this pattern.

If there is any further information needed or should you want a site inspection...please contact me at 203.461.4800 (Cell) and we would be happy to meet with you or your field representative.

This has been and will surely continue to be trying economic times and I have great confidence that your company does not want to make it any more difficult then necessary for small, family owned and operated companies like ours.

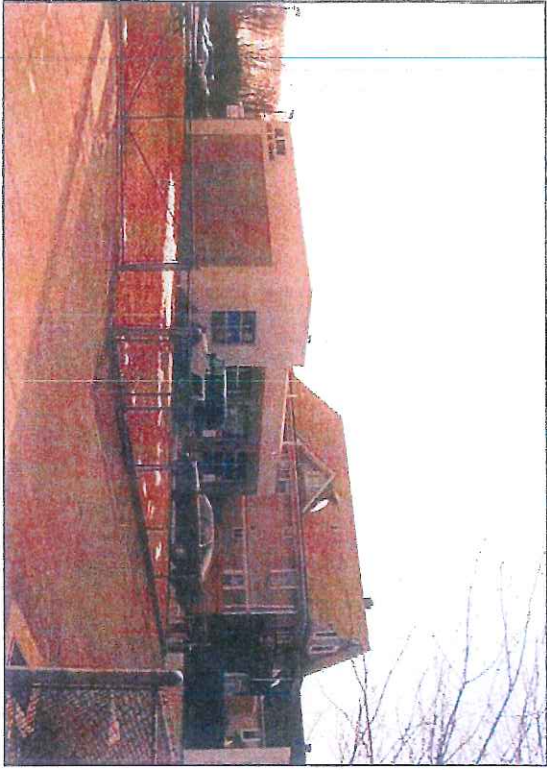
Please consider our request to avoid the **GREEN** route.

Thank you for your kindness and courtesy during our phone conversations.

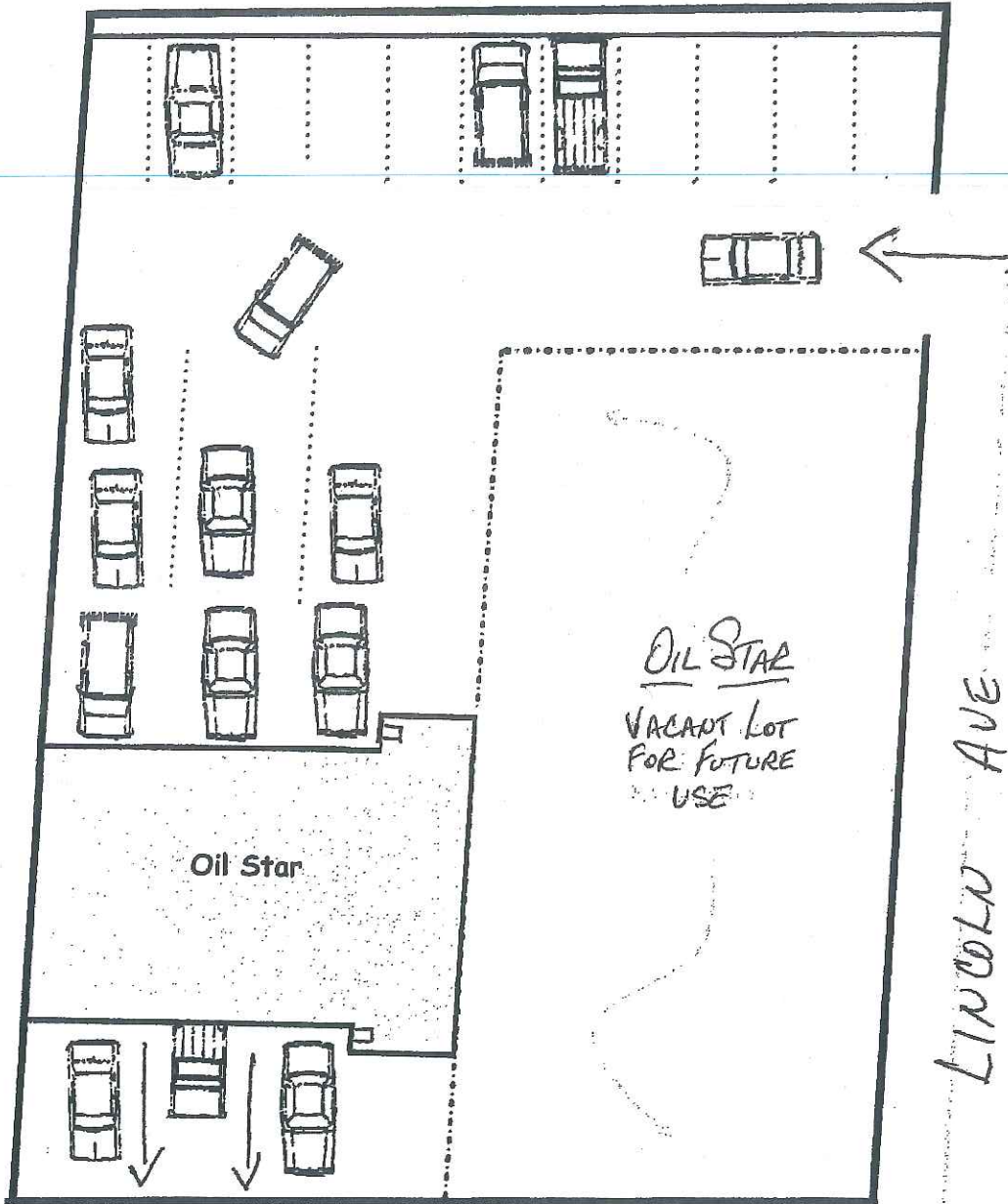
Good wishes for a Healthy & Happy New Year.

Yours truly,

Frances Zupaniotis  
V.P.  
OIL STAR,inc



# Site Plan



EAST MAIN ST.

LINCOLN AVE

OIL STAR  
VACANT LOT  
FOR FUTURE  
USE



**Connecticut  
Light & Power**

A Northeast Utilities Company

The Connecticut Light and Power Company

P.O. Box 270  
Hartford, CT06141-0270  
(860) 947-2000

## News Release

### **Connecticut Light & Power Proposes Project to Strengthen the Region's Electric Transmission Grid *Public Invited to Open House to Learn More***

**MEDIA CONTACT: Frank Poirot**  
Office: (860) 665-3409  
After Hours: (800) 286-2000

**STAMFORD, Connecticut, January 7, 2013** – Getting a glimpse of high voltage power lines buried underground usually requires heavy construction equipment and going into the trenches. However, next week Connecticut Light & Power (CL&P) invites residents to an open house for a close look at a proposed underground transmission project at the Stamford Government Center.

**Date** Tuesday, January 8, 2013  
**Time** 6:00 to 8:00 p.m.  
**Location** The Stamford Government Center, Lobby  
888 Washington Blvd.  
Stamford, CT

The Stamford Reliability Cable Project, a \$47 million transmission upgrade, is aimed at providing an additional path for the flow of electricity within the city while improving reliability of the high voltage grid serving southwest Connecticut. The project proposes installation of a new 115,000 volt underground transmission line extending about 1.5 miles, connecting two CL&P substations in the city.

This project will also bring important economic benefits to Stamford. First, it will create new, local jobs during construction. Second, the project's improvements in reliability of the transmission grid serving Stamford are important to both existing customers and new customers moving to Stamford. Third, the upgraded infrastructure will generate significant new tax revenue to the city once it is complete.

If approved by the Connecticut Siting Council, project construction is scheduled to begin in 2014 with completion scheduled for later that year. For additional information on the Stamford Reliability Cable Project, please visit [www.StamfordCable.com](http://www.StamfordCable.com), or call 1-800-793-2202.

---

*The Connecticut Light and Power Company (CL&P) has been part of everyday life in Connecticut for more than 100 years, providing safe and reliable electric service to homes, neighborhoods and businesses. With 1.2 million customers in 149 cities and towns, CL&P is improving the environments you live in, by offering programs in energy conservation, economic development and environmental stewardship. CL&P is a Northeast Utilities company (NYSE: NU). For more information, please visit [www.cl-p.com](http://www.cl-p.com), like us on Facebook at [facebook.com/CTLightandPower](https://facebook.com/CTLightandPower) and follow us on Twitter [@CTLightandPower](https://twitter.com/CTLightandPower).*

###

# YOUR COMMENTS, PLEASE

Please use this form to provide your comments on the proposed Stamford Reliability Cable Project.

Your Comments:

Why does it cost \$46+ million for 1 1/2 miles of a new buried transmission line.

What components ~~cost so much?~~ Drive up the cost?

FIRST NAME:

Wester

LAST NAME:

Freundlich

STREET ADDRESS:

48 Woodbrooke Dr

TOWN:

Stamford

STATE:

CT

ZIP:

06907

EMAIL ADDRESS:

Freundlich@Juno.com

PHONE #:

212-878-2219

### Instructions:

Place your completed card in the "Comment Station" (only if attending the Public Open House) or mail your comment card back to us. CL&P will share a copy of your comments with the Connecticut Siting Council and your city officials.

Thank you,



**Connecticut Light & Power**

A Northeast Utilities Company



From: Anuj Mathur/NUS  
To: freundlich@juno.com  
Date: 01/26/2013 10:06 AM  
Subject: Stamford Reliability Cable Project - January 8th Open House

---



Dear Mr. Freundlich,

Thank you for your written comment on January 8, 2013 at Open House held at Stamford Government Center. We are informing the Connecticut Siting Council of your comment and we will contact you to further discuss.

Regards,

A handwritten signature in blue ink, appearing to read "Anuj Mathur". The signature is fluid and cursive, with a long horizontal stroke extending to the right.

---  
Anuj Mathur, PMP  
Project Manager, Stamford Reliability Cable Project  
Northeast Utilities Service Company  
O: (860) 665-6783  
M: (860) 302-8596  
E: anuj.mathur@nu.com

# YOUR COMMENTS, PLEASE

Please use this form to provide your comments on the proposed Stamford Reliability Cable Project.

Your Comments:

Your Open House was very well done.

I had a very informative conversation with Project Engineer, Peter Novak & others

I am the owner of 80-90 and 104 Lincoln Avenue and hope to hear from Northeast Utilities in the near future.

FIRST NAME:  LAST NAME:

STREET ADDRESS:

TOWN:  STATE:  ZIP:

EMAIL ADDRESS:  PHONE #:

### Instructions:

Place your completed card in the "Comment Station" (only if attending the Public Open House) or mail your comment card back to us. CL&P will share a copy of your comments with the Connecticut Siting Council and your city officials.

Thank you,



**Connecticut Light & Power**

A Northeast Utilities Company

---

From: Anuj Mathur/NUS  
To: judWerner@gmail.com  
Date: 01/26/2013 09:37 AM  
Subject: Stamford Reliability Cable Project - January 8th Open House

---



Dear Mr. Werner,

Thank you for your written comments at the Open House on January 8, 2013 at the Stamford Government Center. We will be sharing your comments with the Connecticut Siting Council.

Regards,

A handwritten signature in blue ink, appearing to read "Anuj", with a long horizontal flourish extending to the right.

---  
Anuj Mathur, PMP  
Project Manager, Stamford Reliability Cable Project  
Northeast Utilities Service Company  
O: (860) 665-6783  
M: (860) 302-8596  
E: anuj.mathur@nu.com

**RE: Stamford Cable Project**

From: Anuj Mathur <TRANSMSSN PROJ > < 703-6783 >  
 To: "Karukonda, Veera"  
 Cc: "Casolo, Louis", "Poola, Mani", "Karukonda, Veera"

01/10/2013 04:19 PM

Veera,

This confirms receipt of your request. I have forwarded to Transmission Line Engineering for review. Will evaluate and respond at our earliest convenience.

Thank you.  
 Anuj

---

Anuj Mathur, PMP  
 Transmission Projects  
 Northeast Utilities Service Company  
 O: (860) 665-6783  
 M: (860) 302-8596  
 E: anuj.mathur@nu.com

"Karukonda, Veera" Hi Anuj: I forgot to mention one more detail. O...

01/10/2013 03:56:26 PM

From: "Karukonda, Veera" <VKarukonda@ci.stamford.ct.us>  
 To: Anuj Mathur/NUS@NU  
 Cc: "Casolo, Louis" <LCasolo@ci.stamford.ct.us>, "Poola, Mani" <MPoola@ci.stamford.ct.us>, "Karukonda, Veera" <VKarukonda@ci.stamford.ct.us>  
 Date: 01/10/2013 03:56 PM  
 Subject: RE: Stamford Cable Project

Hi Anuj:

I forgot to mention one more detail. Our 4" PVC spare duct does not have to be accessed thru your proposed Vaults due to high voltage equipment. At all the Vault locations the contractor can redirect our conduit to go around the vault on the outside either over the top or along the sides of the vault without entering it.

Thanks

**Veera Karukonda**, Signal Systems Engineer  
 City of Stamford, Traffic Engineering  
 888 Washington Blvd., 7<sup>th</sup> Floor, Stamford, CT 06901

203-977-5675 (Work), -4004 (Fax), 203-223-4412 (Cell)

**From:** Karukonda, Veera  
**Sent:** Thursday, January 10, 2013 3:10 PM  
**To:** 'anuj.mathur@nu.com'  
**Cc:** Casolo, Louis; Poola, Mani; Karukonda, Veera

Anuj

---

Anuj Mathur, PMP  
Transmission Projects  
Northeast Utilities Service Company  
O: (860) 665-6783  
M: (860) 302-8596  
E: [anuj.mathur@nu.com](mailto:anuj.mathur@nu.com)

---

From: "Karukonda, Veera" <[VKarukonda@ci.stamford.ct.us](mailto:VKarukonda@ci.stamford.ct.us)>  
To: Anuj Mathur/NUS@NU  
Date: 01/10/2013 08:56 AM  
Subject: Contact info

Good Morning Anuj:

Please verify that this is your correct email to transmit additional info related to Stamford Reliability Cable Project.

Thanks

**Veera Karukonda**, Signal Systems Engineer  
City of Stamford, Traffic Engineering  
888 Washington Blvd., 7<sup>th</sup> Floor, Stamford, CT 06901

203-977-5675 (Work), -4004 (Fax), 203-223-4412 (Cell)

\*\*\*\*\*

This e-mail, including any files or attachments transmitted with it, is confidential and/or proprietary and is intended for a specific purpose and for use only by the individual or entity to whom it is addressed. Any disclosure, copying or distribution of this e-mail or the taking of any action based on its contents, other than for its intended purpose, is strictly prohibited. If you have received this e-mail in error, please notify the sender immediately and delete it from your system. Any views or opinions expressed in this e-mail are not necessarily those of Northeast Utilities, its subsidiaries and affiliates (NU). E-mail transmission cannot be guaranteed to be error-free or secure or free from viruses, and NU disclaims all liability for any resulting damage, errors, or omissions.