

STATE OF CONNECTICUT  
CONNECTICUT SITING COUNCIL

IN RE:

APPLICATION OF SBA TOWERS III (SBA)  
AND NEW CINGULAR WIRELESS PCS, LLC  
(AT&T) FOR A CERTIFICATE OF  
ENVIRONMENTAL COMPATIBILITY AND  
PUBLIC NEED FOR THE CONSTRUCTION,  
MAINTENANCE AND OPERATION OF A  
TELECOMMUNICATIONS TOWER FACILITY  
IN THE TOWN OF NORTH STONINGTON

DOCKET NO. 420

October 5, 2011

SBA TOWERS III (SBA) AND NEW CINGULAR WIRELESS PCS, LLC (AT&T)  
SUBMISSION IN RESPONSE TO SITING COUNCIL QUESTIONS AT  
SEPTEMBER 20, 2011 HEARING

At the September 20, 2011 hearing for Docket 420, the witness panel for the Applicants provided that additional information could be provided in furtherance of the Application. Below and attached please find the additional information discussed.

1. Information regarding closest abutting property owner and closest residence:

Included as Attachment A please find abutters maps including information and distances to adjacent properties.

<b>Candidate Site</b>	<b>Closest Property Line</b>	<b>Closest Off-site residence</b>
A - Mountain Avenue	75'	353'
B - 23/25 Northwest Corner Road	370'	1,570'
C - 350B Cossaduck Hill Road	165'	680'

2. Status of Mountain Avenue as a private road or a public road:

The project engineers have confirmed with the Town of North Stonington that Mountain Avenue is a private road.

3. Migratory Bird Impact Memorandum background information and data sources:

Included as Attachment B please find background information related to the avian resource analysis prepared by VHB and originally included in the Applicants' Responses to Siting Council Interrogatories (Set I).

4. Facilities in state forest in the area, nature of facilities at the local ponds and lakes:

Based on prior field work associated with the Visual Resource Evaluation and review of the Department of Energy and Environmental Protection (DEEP) website, the Applicants are

unaware of any formal facilities (picnic benches, campgrounds etc.) located within portions of Pachuag State Forest near the proposed alternate candidate sites. There are state boat launches at Andersons Pond, Billings Lake and Wyassup Lake. Available records and information indicate that the nearest “full-service” area within the State Forest is located at Green Falls Pond which is approximately 4 miles northeast of the Site A candidate.

5. State Historic Preservation Officer (SHPO) correspondence: As discussed at the hearing, a final determination has not been issued for the two alternate candidates as further investigation of potential below ground resources must be conducted. The status of SHPO’s review is summarized below and correspondence is included as Attachment C.

- A. 49 Mountain Avenue: No effect on historic resources.

- B. 23/25 Northwest Corner Road: This site has only been submitted and preliminarily reviewed for visual effects at this time; no visual effects found by SHPO though this review is for informational purposes only and is not final. Further assessment regarding potential archeological resources will have to be provided however no significant impact to below ground resources is anticipated.

- C. 350B Cossaduck Hill Road: This site has only been submitted and preliminarily reviewed for visual effects at this time; no visual effects found by SHPO though this review is for informational purposes only and is not final. Further assessment regarding potential archeological resources will have to be provided however no significant impact to below ground resources is anticipated.

6. Distance and direction to nearest wetlands:

- A. 49 Mountain Avenue: Greater than 300 feet to north and 450 feet to southeast.

- B. 23/25 Northwest Corner Road: Approximately 350 feet to south. Existing driveway crosses between a farm pond (to east) and narrow forested wetland (to west); culvert under driveway will not be disturbed by proposed work.

- C. 350B Cossaduck Hill Road: Greater than 700 feet to east.

7. Availability of Reverse 911 for mobile phones:

In furtherance of the Siting Council’s questions regarding “Reverse 911” for mobile phones, the Applicants’ representatives have reviewed information available for the Connecticut Alert Emergency Notification System (CT Alert). According to the CT Alert website this system:

[U]ses the state's Enhanced 9-1-1 (E9-1-1) database for location-based notifications to the public for life-threatening emergencies. But the E9-1-1 database includes only traditional wire-line telephone numbers in the state (the 'land line' phone you may have in your home). If you want the system to send alerts to other communication devices that you use, then you must provide your contact information.

Please see information included in Attachment D (Also available at: [www.ctalert.gov](http://www.ctalert.gov))

#### 8. Plots: (coverage along Pendleton)

Additional coverage plots are included as Attachment E. These plots include the following:

1. SBA site at 2172 Glasgow Road Only
2. Original Proposed Candidate at 49 Mountain Avenue (Candidate A) Only
3. Alternate B Only
4. Alternate C Only
5. Alternate B + Existing Coverage
6. Alternate C + Existing Coverage

In addition, please note that review of the coverage models indicates that while some portions of Pendleton Road will have service, 588 Pendleton Road is not predicted to have reliable service from any of the alternate candidates.

#### 9. Site Search Map

Included as Attachment F is a map of sites listed in the site search analysis provided in the revised site search summary included with the pre-filed testimony of David Vivian and resubmitted here again for ease of reference.

## Attachment A







## Attachment B



Background Information and Data Sources for  
September 8, 2011 Migratory Bird Impact Memorandum  
Prepared by Vanasse Hangen Brustlin, Inc. (VHB)

## Flyways

Hunters, by returning the bands they've found on the legs of ducks and geese they harvest, have helped identify the migration patterns of waterfowl through the continental United States. Biologists proposed in the mid-1930s that migratory birds followed four geographical flyways during their spring and fall migrations across North America. East to west, the flyways are the Atlantic, Mississippi, Central, and Pacific. Flyway is a useful geographic term that describes four regions of the United States. Although migratory birds fly through many narrow migration corridors, the flyways fairly accurately represent the major north-south migration pathways. Because of the unique biological characteristics and relative number of hunters in the flyways, the U.S. Fish and Wildlife Service adopted the flyway structure in 1947 for administering migratory bird resources within the United States. Although biological flyways extend through North America, administrative flyways are specific to the United States and have not changed since their original establishment.

After several years of working in the flyway system, states decided they could more effectively achieve their objectives by organizing by flyways rather than operating individually. In 1951, the International Association of Fish and Wildlife Agencies passed a resolution recommending the establishment of a flyway council in each flyway that would be composed of representatives of the state wildlife agencies, and a national flyway council consisting of one elected member from each flyway council. The Connecticut Department of Energy and Environment is a member of the Atlantic Flyway Council.

The Connecticut coast lies within the Atlantic Flyway, one of the four generalized regional migratory bird flyways (Mississippi, Central, and Pacific being the others). This regional flyway is used by migratory birds traveling to and from summering and wintering grounds. The Atlantic Flyway is particularly important for many species of migratory waterfowl and shorebirds, and Connecticut's coast serves as vital stopover habitat. Migratory land birds also stop along coastal habitats before making their way inland. Smaller inland migratory flyways are often concentrated along major riparian areas as birds make their way further inland to their preferred breeding habitats.

## Focus Areas

The Atlantic Coast Joint Venture (ACJV) is an affiliation of federal, state, regional, and local partners working together to address bird conservation planning along the Atlantic Flyway. The ACJV has identified focus areas identifying the most important habitats for waterfowl within the Atlantic Flyway. Connecticut contains several of these focus areas. Focus Areas are identified on the Connecticut Waterfowl Focus Areas Map (*North American Waterfowl Management Plan, Atlantic Coast Joint Venture, Waterfowl Implementation Plan Revision*, June 2005).

## CTDEEP Migratory Waterfowl Data

The Connecticut Department of Energy and Environmental Protection (CTDEEP) created a Geographic Information System (GIS) data layer in 1999 identifying concentration areas of migratory waterfowl at specific locations in Connecticut. The intent of this data layer is to assist in the identification of migratory waterfowl resource areas in the event of an oil spill or other condition that might be a threat to waterfowl species. This data layer identifies conditions at a particular point in time and has not been updated since 1999.

## Important Bird Areas and Sites

Audubon Connecticut has identified 27 Important Bird Areas and Sites (IBAs) in the state. The list of 27 IBAs was formally designated with publication of Connecticut's Comprehensive Wildlife Conservation Strategy (Jan. 2006). There are currently at least 1 site that has status pending, 11 sites are currently under review, and 81 additional sites have been identified as potential IBAs. With the hiring of a new IBA Program Coordinator in May 2011, Audubon Connecticut expects that the IBA recognition process will be reestablished and additional IBAs may be designated later in 2011.

### Critical Habitat

Connecticut Critical Habitat data catalogs the classification and distribution of 25 rare and specialized wildlife habitats in the state resulting in the creation of habitat maps to be used in land use planning and natural resource protection. It represents a compilation of ecological information collected over many years by state agencies, conservation organizations and many individuals. The Connecticut Critical Habitats information can serve to highlight ecologically significant areas and to target areas of species diversity for land conservation and protection. Examples of critical habitats include Acidic Atlantic White Cedar Swamps, Sand Barrens, Dry Subacidic Forests and Intertidal Marshes. Connecticut Critical Habitats is the result of a project, which took place from 2007-2009, to create habitat maps to be used in land use planning and natural resource protection. Critical habitats range in size from areas less than 1 acre to areas that are 10's of acres in extent.

### Breeding Bird Survey Route

The North American Breeding Bird Survey (BBS) is a cooperative effort between various agencies and volunteer groups to monitor the status and trends of North American bird populations. The BBS was established in 1966 and collects data for more than 400 bird species. Routes are randomly located to sample habitats that are representative of an entire region. Current BBS route location data is provided by USGS Patuxent Wildlife Research Center from 1999. Each year during the height of the avian breeding season (June for most of the United States) participants skilled in avian identification collect bird population data along roadside survey routes. Each survey route is approximately 24.5 miles long and contains 50 stops located at 0.5-mile intervals. At each stop, a 3-minute count is conducted. During the count, every bird seen within a 0.25-mile radius or heard is recorded. The resulting data are used by conservation managers, scientists, and the general public to estimate population trends and relative abundances and to assess bird conservation priorities.

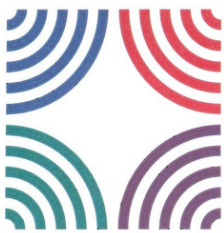
### Hawk Watch Site

The Hawk Migration Association of North America (HMANA) is a membership-based organization committed to the conservation of raptors through the scientific study, enjoyment, and appreciation of raptor migration. HMANA collects hawk count data from almost two hundred affiliated raptor monitoring sites throughout the United States, Canada, and Mexico, identified as "Hawk Watch Sites." As of 2010, Connecticut currently has 31 Hawk Watch Sites that are monitored.

### Bald Eagle Site

Bald Eagle Sites consist of locations of midwinter Bald Eagle counts (last update provided in 2008). This survey was initiated in 1979 by the National Wildlife Federation. This database includes data from 1986-2005 midwinter counts and includes some statewide, regional and national trends. Survey routes are included in the database only if they were surveyed consistently in at least 4 years and where at least 4 eagles were counted in a single year. Connecticut currently has 10 Bald Eagle Sites/Routes. The metadata used in the prepared mapping is from the following source: U.S. Geological Survey, National Biological Information Infrastr, 2008, Midwinter Bald Eagle Counts, 1986-2005 (update 2008).

## Attachment C



February 7, 2011

David Bahlman  
Division Director  
Deputy State Historic Preservation Officer

Historic Preservation  
and Museum Division

One Constitution Plaza  
Second Floor  
Hartford, Connecticut  
06103

860.256.2800  
860.256.2763 (f)

Ms. Coreen Kelsey  
Environmental Coordinator  
VHB, Inc.  
54 Tuttle Place  
Middletown, CT 06457

Subject: Revised Comments on the Proposed SBA Towers II LLC  
Telecommunications Facility, 49 Mountain Avenue, North  
Stonington, Connecticut.

Dear Ms. Kelsey:

The State Historic Preservation Office has reviewed the supplementary information you have provided concerning the referenced project. SBA Towers proposes the construction of a ~190-foot tall monopole tower and associated ground facilities within a ~45-foot by ~90 foot fence-enclosed compound area. The tower will be constructed approximately 500 feet the east of Mountain Avenue within a densely wooded area atop a hill overlooking Billings Lake to the east. Access to the site will be provided by a new 12-foot wide gravel roadway.

SHPO reviewed the project previously and recommended that an archaeological reconnaissance survey be completed to identify any potentially significant archaeological resources that might be affected by the construction. Heritage Consultants, LLC (Heritage) recently completed the requested survey, which included subsurface testing of the proposed tower site and ground facilities. No potentially significant archaeological resources were identified during the survey and Heritage recommends no additional investigations. Based on the information submitted to our office, it appears that the archaeological survey was completed in accordance with SHPO's *Environmental Review Primer for Connecticut's Archaeological Resources*. We concur with Heritage's professional opinion that further archaeological investigations for this project are not warranted. SHPO believes that the proposed telecommunications facility at 49 Mountain Avenue will have no effect on historical or archaeological resources listed in, or eligible for listing in, the National Register of Historic Places.

This office appreciates the opportunity to have reviewed and commented upon the proposed undertaking. This comment is provided in accordance with the National Historic Preservation Act. For further information, please contact Daniel Forrest, Staff Archaeologist, at (860) 256-2761 or [daniel.forrest@ct.gov](mailto:daniel.forrest@ct.gov).



*Kelsey – Proposed Telco Tower at 49 Mountain Ave, North Stonington, CT*  
*February 7, 2011*  
*(Page 2/2)*

Sincerely,

A handwritten signature in black ink that reads "David Bahlman". The signature is fluid and cursive, with a long horizontal flourish extending to the right.

David Bahlman  
Deputy State Historic Preservation Officer

cc: Knowles/MPTN-THPO

**From:** [Chandler, Susan](#)  
**To:** [Kelsey, Coreen](#)  
**Subject:** RE: Two North Stonington sites  
**Date:** Friday, September 30, 2011 9:13:18 AM

---

Hi Coreen –

Thanks, I am! Still a drag, though. Will be in a cast for 8 weeks.

Conducted a field evaluation for 23/25 Northwest Corner Road and 350B Cossaduck Hill Road in North Stonington. In the opinion of this office, there are no above-ground resources within the APE on which the proposed telecommunication facilities would have a visual effect.

This comment is informational only and does not constitute our final or formal determination on the undertaking.

Best, Susan

Susan R. Chandler  
Historical Architect

State Historic Preservation Office  
Department of Economic and Community Development  
One Constitution Plaza, Second Floor  
Hartford, CT 06103

860-256-2800 (main)  
860-256-2764 (direct)  
860-256-2763 (fax)

[www.cultureandtourism.org](http://www.cultureandtourism.org)  
[www.ct.gov/ecd](http://www.ct.gov/ecd)  
[www.CTvisit.com](http://www.CTvisit.com)

---

**From:** Kelsey, Coreen [mailto:CKelsey@VHB.com]  
**Sent:** Monday, August 15, 2011 10:12 AM  
**To:** Chandler, Susan  
**Subject:** FW: Two North Stonington sites

Hi Susan,

Sorry to hear about your foot. Hope you are doing better. I just wanted to touch base with you on these 2 alternate sites. I know you said they were clear for visual. Could you please just send me an email with the SHPO title and info below your name?

Thanks so much.  
Coreen

**Coreen L. Kelsey**  
Environmental Coordinator  
860.632.1500 x2306  
[www.vhb.com](http://www.vhb.com)

---

**From:** Kelsey, Coreen  
**Sent:** Monday, July 18, 2011 11:31 AM  
**To:** Chandler, Susan  
**Subject:** RE: Two North Stonington sites

Hi Susan,

If you could send a letter that would be great, but if an email would be easier for you, could you just send one with your title and all the SHPO info under your name.

Thanks so much.

Coreen

**Coreen L. Kelsey**  
Environmental Coordinator  
860.632.1500 x2306  
[www.vhb.com](http://www.vhb.com)

---

**From:** Chandler, Susan [mailto:Susan.Chandler@ct.gov]  
**Sent:** Monday, July 18, 2011 10:34 AM  
**To:** Kelsey, Coreen  
**Subject:** Two North Stonington sites

Hi Coreen –

I went out last week to 23/25 Norwest Corner Road and 350B Cossaduck Hill Road in North Stonington.

No visual impact to historic resources for either. Since this was preliminary, do you need a formal letter or will this email do?

Best, Susan

This communication is confidential and intended only for the recipient(s). Any other use, dissemination, copying, or disclosure of this communication is strictly prohibited. If you have received this communication in error, please notify us and destroy it immediately. Vanasse Hangen Brustlin, Inc. is not responsible for any undetectable alteration, transmission error, conversion, media degradation, software error, or interference with this transmission. Vanasse Hangen Brustlin, Inc. | 101 Walnut St | Watertown, MA 02472 | 617.924.1770



## Attachment D



## Connecticut Emergency Alerting and Notification Systems

Home   About Us   News   Contact Us

Towns That Participate  
Frequently Asked Questions  
Other Resources

**REGISTER**  
for Alerts

**Update**  
your **PROFILE**



Connecticut Emergency Alerting and Notification System  
email:  
[ctalert@ct.gov](mailto:ctalert@ct.gov)

Department of Emergency Services and Public Protection  
1111 Country Club Road  
Middletown, CT 06457

### Frequently Asked Questions

#### What is the CT Alert Emergency Notification System?

On September 1, 2009, Connecticut became the first state in the nation to have a statewide emergency notification system. CT Alert ENS allows state and local officials to help protect lives and property by providing critical information to residents during emergencies, including dangerous situations. CT Alert ENS is managed by the State Department of Emergency Services and Public Protection.

#### What can the CT Alert Emergency Notification System do?

CT Alert ENS has two main components:

- The system allows authorized users to quickly send out an emergency alert to residents in any affected geographic area within the state. Depending on the emergency, the alert may be sent to an entire town, part of a town, a group of towns, or a large area of the state.
- The system also allows public safety agencies to send messages to emergency response personnel.

#### Where is the CT Alert Emergency Notification System available?

The system is available for use by state and local 911 Emergency Communications Centers, and some state agencies. At this time, several 911 Emergency Communications Centers have chosen not to use the CT Alert ENS System for local emergency messages, but instead will continue to rely on their existing emergency notification systems. Even if you live in one of the several towns served by a 911 Emergency Communications Center that is not currently using the CT Alert ENS for local emergency messages, you may still receive alerts sent by the State of Connecticut through CT Alert ENS, or from a neighboring 911 Emergency Communications Center that sends out an emergency alert that includes your geographic area.

#### What is the CT Alert ENS Citizen Sign-Up Page?

CT Alert ENS uses the state's Enhanced 9-1-1 (E9-1-1) database for location-based notifications to the public for life-threatening emergencies. But the E9-1-1 database includes only traditional wire-line telephone numbers in the state (the "land line" phone you may have in your home). If you want the system to send alerts to other communication devices that you use, then you must provide your contact information by logging in to the [CT Alert ENS Citizen "Sign-Up" Database](#) Web Page that you can reach by using the link provided below.

#### How can I sign up for the CT Alert Emergency Notification System?

The [CT Alert ENS Citizen Sign-up Page](#) allows you to add other means of communication to the CT Alert ENS, in addition to your current home phone—also known as a "land line"—if you have one. You can add mobile phones, Voice over IP landlines, wireless personal digital assistants, such as BlackBerry®, e-mail, text messaging, and/or instant messaging to be included to receive alerts from CT Alert ENS. You are responsible for any costs associated with your receipt of any emergency notification.

You can also choose the order in which you receive the emergency notification by specifying your contact path order for multiple communication devices. The system

will cycle through your communication devices until the message is delivered and or confirmed on one of them.

The CT Alert ENS Citizen Sign-Up Page will also allow you to list up to three additional locations in the state for which you want to receive alerts. These locations may include, for example, the towns where other family members live, or where children attend school.

#### **How do I update my information on the CT Alert ENS Citizen Sign-Up Page?**

If you are already registered on the CT Alert ENS, you can update your information by returning to the [CT Alert ENS Citizen Sign-Up Page](#).

Content Last Modified on 7/12/2011 8:08:31 AM

STATE OF CONNECTICUT  
Emergency Notification System



Home  
[Overview](#)  
[FAQs](#)  
[Sign Up For Alerts](#)  
[Manage Profile](#)

## CT ALERT ENS - Overview

The State of Connecticut has implemented a state-of-the-art emergency notification system to alert residents about emergencies in your area. The **CT ALERT ENS** - Emergency Notification system, enables State and Local 911 Emergency Communication Centers to provide essential information quickly in a variety of emergency situations.

### How will the CT ALERT ENS - Emergency Notification System Work?

The process begins when the State of Connecticut or your Local 911 Emergency Communication Centers issues a message about a potential safety hazard or concern. Messages will be sent to all standard voice and text communication devices, including land line phones, mobile phones, e-mail, and more.

If you don't confirm receipt of the message, the system may try to reach your second contact number or email address if the message is critical and requires your confirmation.

**NOTE:** In an Emergency, the system may continue trying to contact you until it receives a confirmation from you. Please confirm receipt of the message as directed.

### Sign Up for CT ALERT ENS - Emergency Notification System.

There are multiple ways to sign up for the CT ALERT ENS - Emergency Notification System.

Residents and businesses with listed telephone numbers have already been included in the system. You may use the registration link to include additional ways to contact you.

[Add your contact information](#) to the emergency notification system.

### How to Update Your Contact Information or Preferences

Already signed up for CT ALERT ENS? [Log in to update your contact information or preferences.](#)

### Stop Receiving Alerts

[Delete Your CT ALERT ENS Profile](#) – (Delete Your Contact Information and Preferences)

**Deleting your profile will stop emergency notifications to the devices you registered in the system CT ALERT ENS , you will no longer receive emergency notifications on those devices, but you may still receive alerts on your traditional home telephone.**

**Questions?** Contact CT ALERT ENS (911) at 860-920-3337 or [ctalert@ct.gov](mailto:ctalert@ct.gov)

[Terms of Use](#)

Powered by everbridge

### Sign Up for Alerts

Not signed up? Click the Sign Up button below to get started.

Sign Up





### Manage Profile

Already signed up for alerts? Log in to update your contact information or preferences.



Log In

## Attachment E

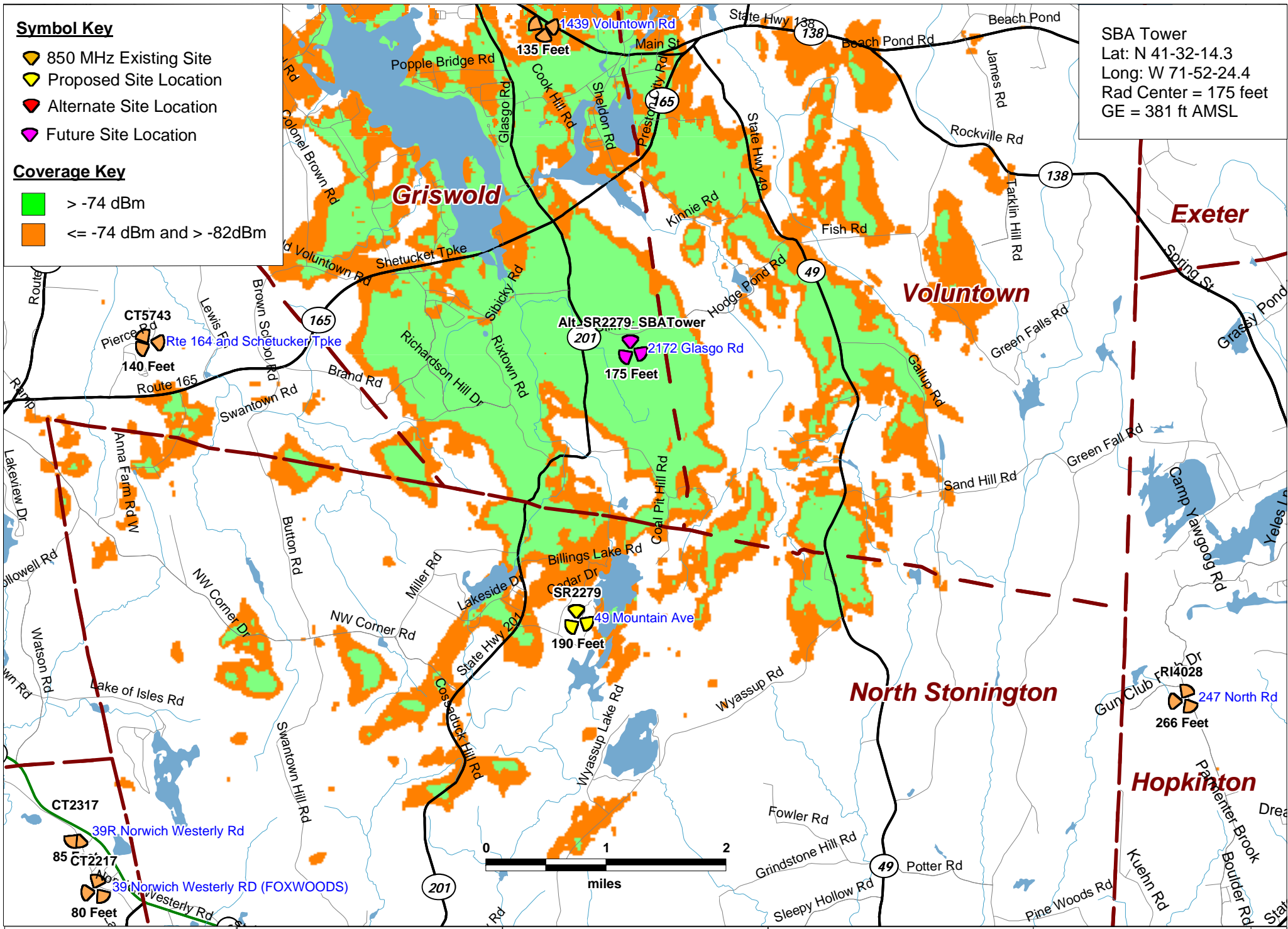
**Symbol Key**

-  850 MHz Existing Site
-  Proposed Site Location
-  Alternate Site Location
-  Future Site Location

**Coverage Key**

-  > -74 dBm
-  <= -74 dBm and > -82dBm

SBA Tower  
 Lat: N 41-32-14.3  
 Long: W 71-52-24.4  
 Rad Center = 175 feet  
 GE = 381 ft AMSL



SBA Coverage Only

North Stonington, CT

49 Mountain Ave  
 North Stonington, CT 06359







PREPARED ON  
 DATE: 10/03/2011



REV 0



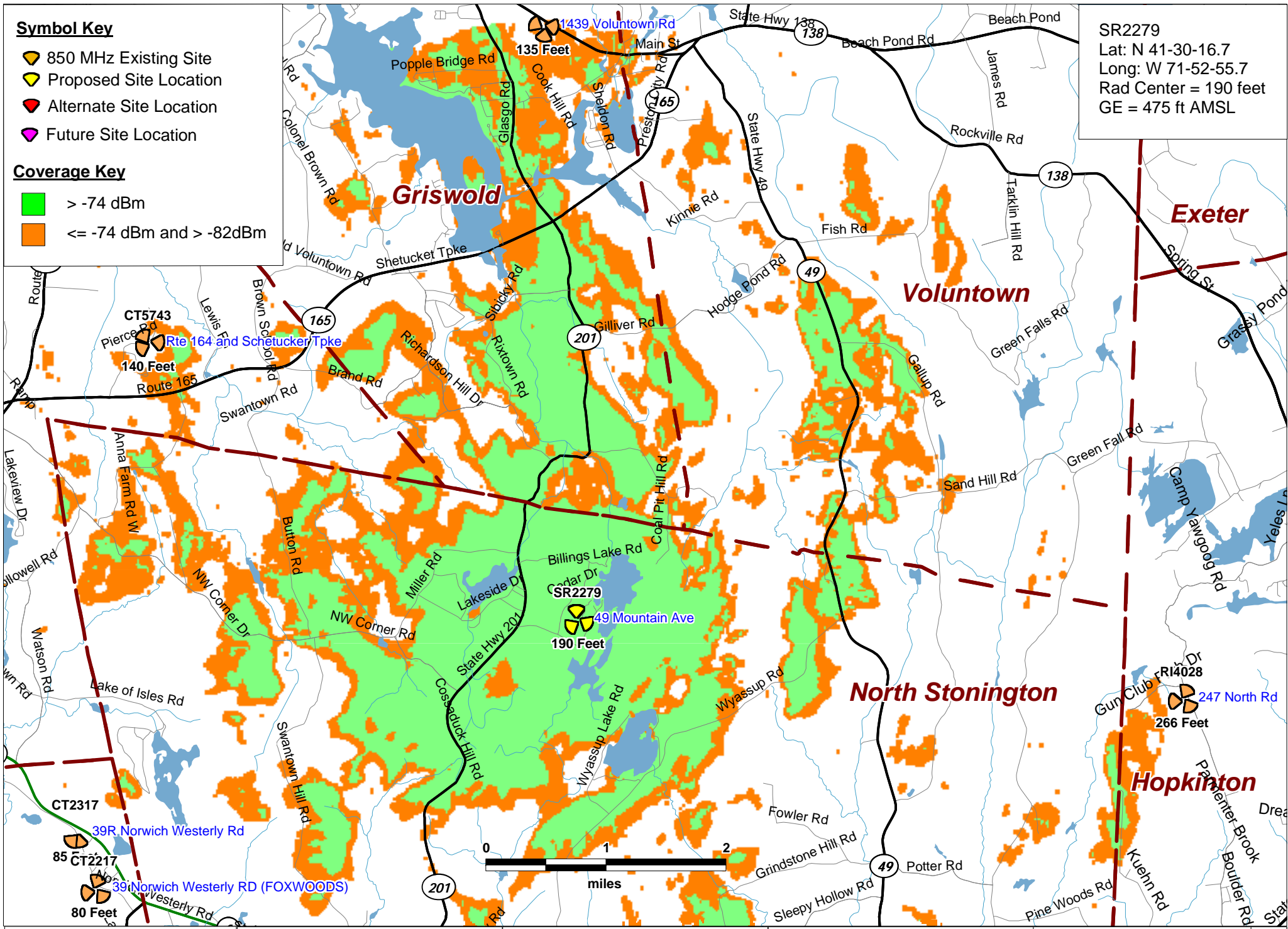
**Symbol Key**

-  850 MHz Existing Site
-  Proposed Site Location
-  Alternate Site Location
-  Future Site Location

**Coverage Key**

-  > -74 dBm
-  <= -74 dBm and > -82dBm

SR2279  
 Lat: N 41-30-16.7  
 Long: W 71-52-55.7  
 Rad Center = 190 feet  
 GE = 475 ft AMSL



Proposed Coverage Only





North Stonington, CT

49 Mountain Ave  
 North Stonington, CT 06359





PREPARED ON	
DATE: 10/03/2011	REV 0

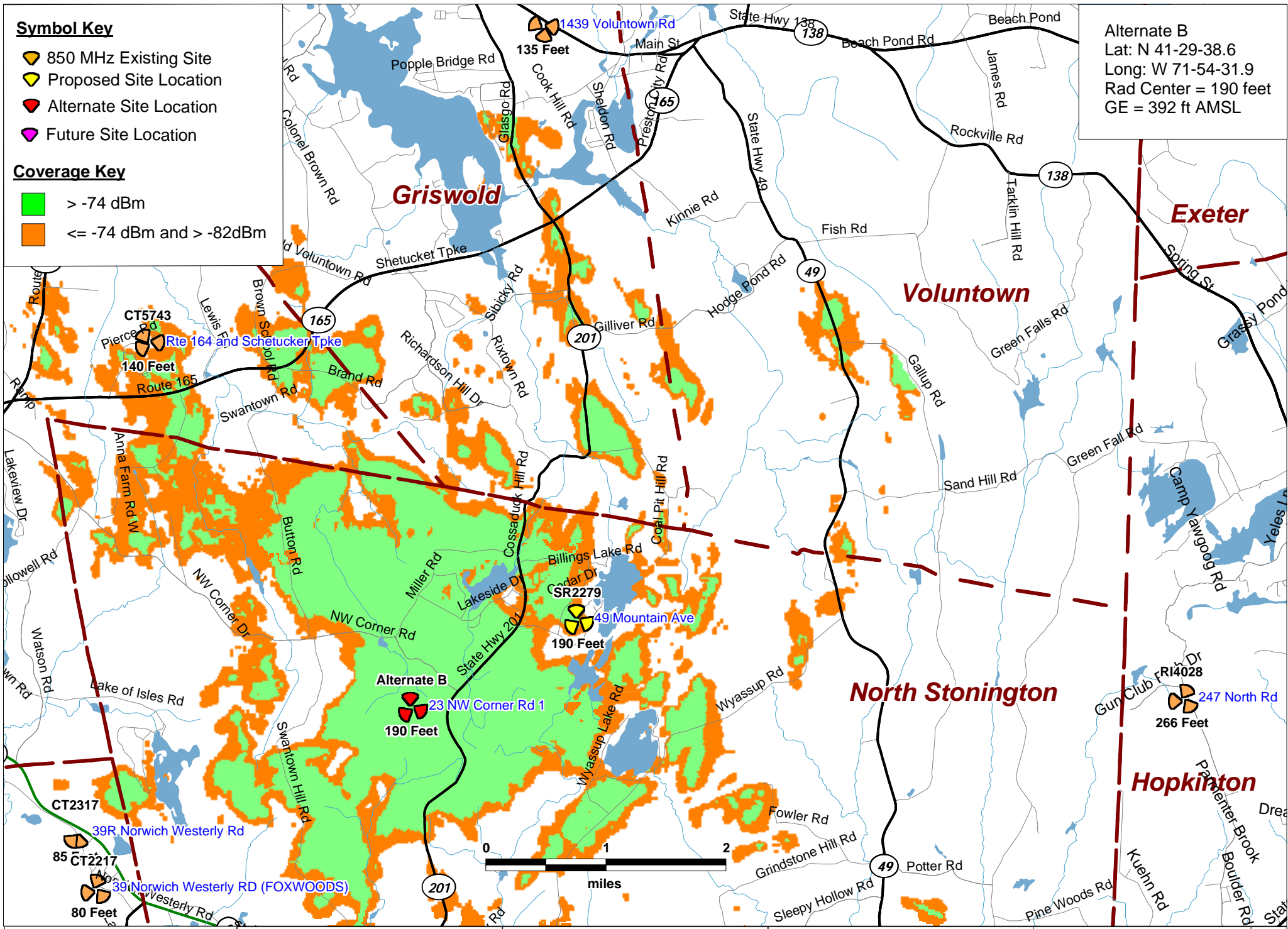
**Symbol Key**

-  850 MHz Existing Site
-  Proposed Site Location
-  Alternate Site Location
-  Future Site Location

**Coverage Key**

-  > -74 dBm
-  <= -74 dBm and > -82dBm

Alternate B  
 Lat: N 41-29-38.6  
 Long: W 71-54-31.9  
 Rad Center = 190 feet  
 GE = 392 ft AMSL



Alternate B Coverage Only

North Stonington, CT

49 Mountain Ave  
 North Stonington, CT 06359







PREPARED ON  
 DATE: 10/03/2011



REV 0



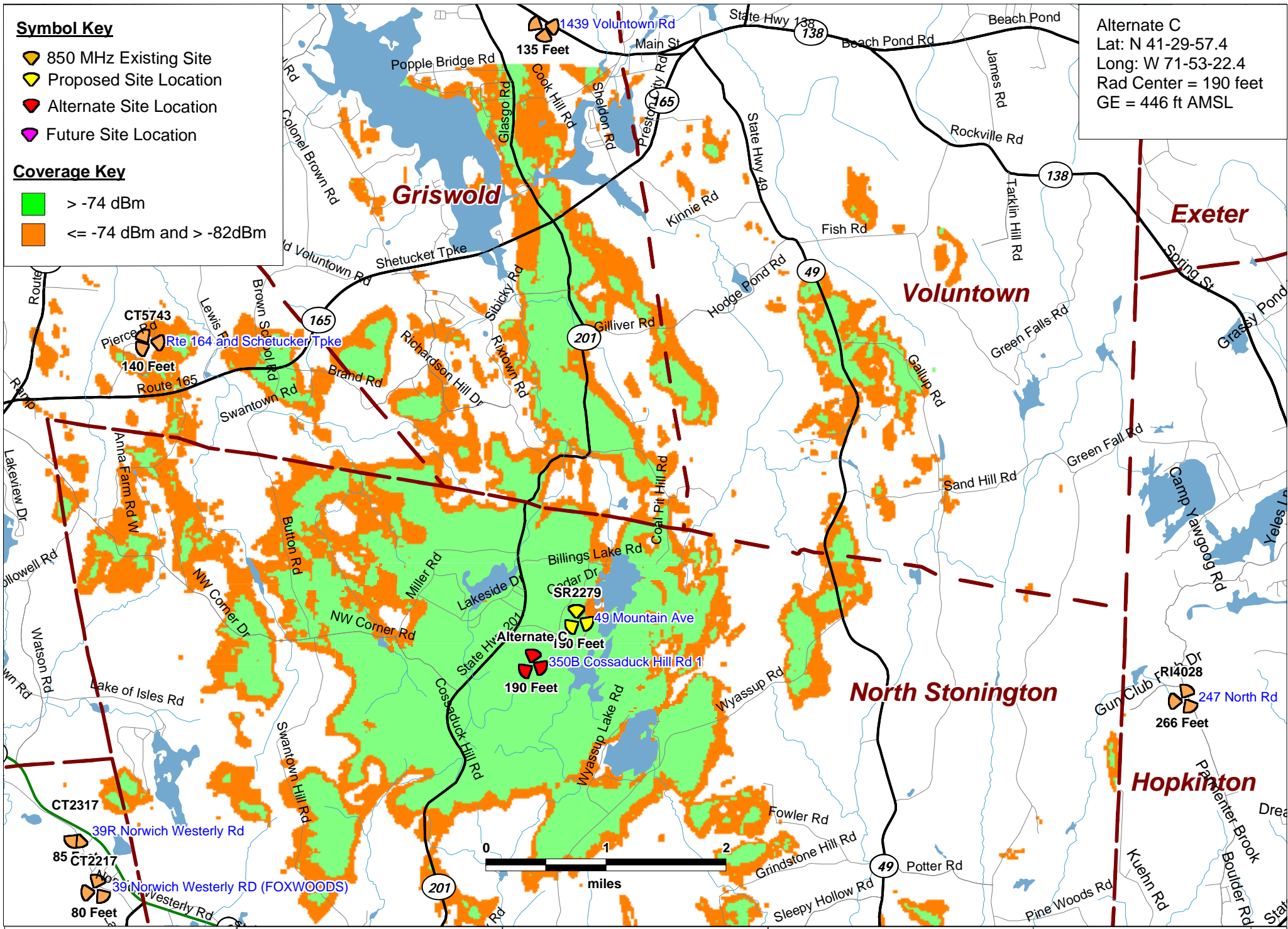
**Symbol Key**

-  850 MHz Existing Site
-  Proposed Site Location
-  Alternate Site Location
-  Future Site Location

**Coverage Key**

-  > -74 dBm
-  <= -74 dBm and > -82dBm

Alternate C  
 Lat: N 41-29-57.4  
 Long: W 71-53-22.4  
 Rad Center = 190 feet  
 GE = 446 ft AMSL



Alternate C Coverage Only

North Stonington, CT





49 Mountain Ave  
 North Stonington, CT 06359





PREPARED ON \_\_\_\_\_  
 DATE: 10/03/2011

REV 0

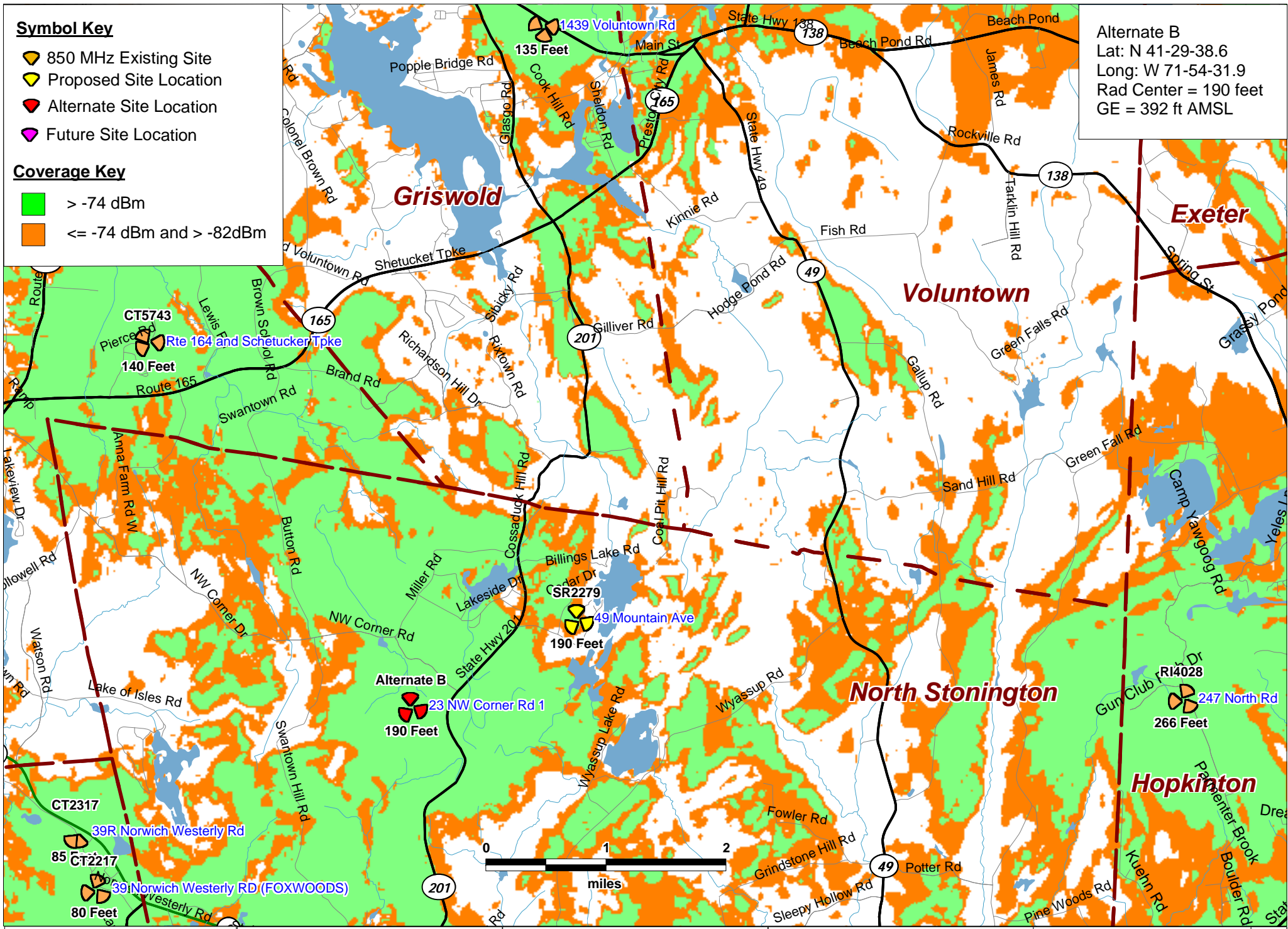
**Symbol Key**

-  850 MHz Existing Site
-  Proposed Site Location
-  Alternate Site Location
-  Future Site Location

**Coverage Key**

-  > -74 dBm
-  <= -74 dBm and > -82dBm

Alternate B  
 Lat: N 41-29-38.6  
 Long: W 71-54-31.9  
 Rad Center = 190 feet  
 GE = 392 ft AMSL



Existing & Alternate B Coverage

North Stonington, CT





49 Mountain Ave  
 North Stonington, CT 06359





PREPARED ON	
DATE: 09/21/2011	REV 0



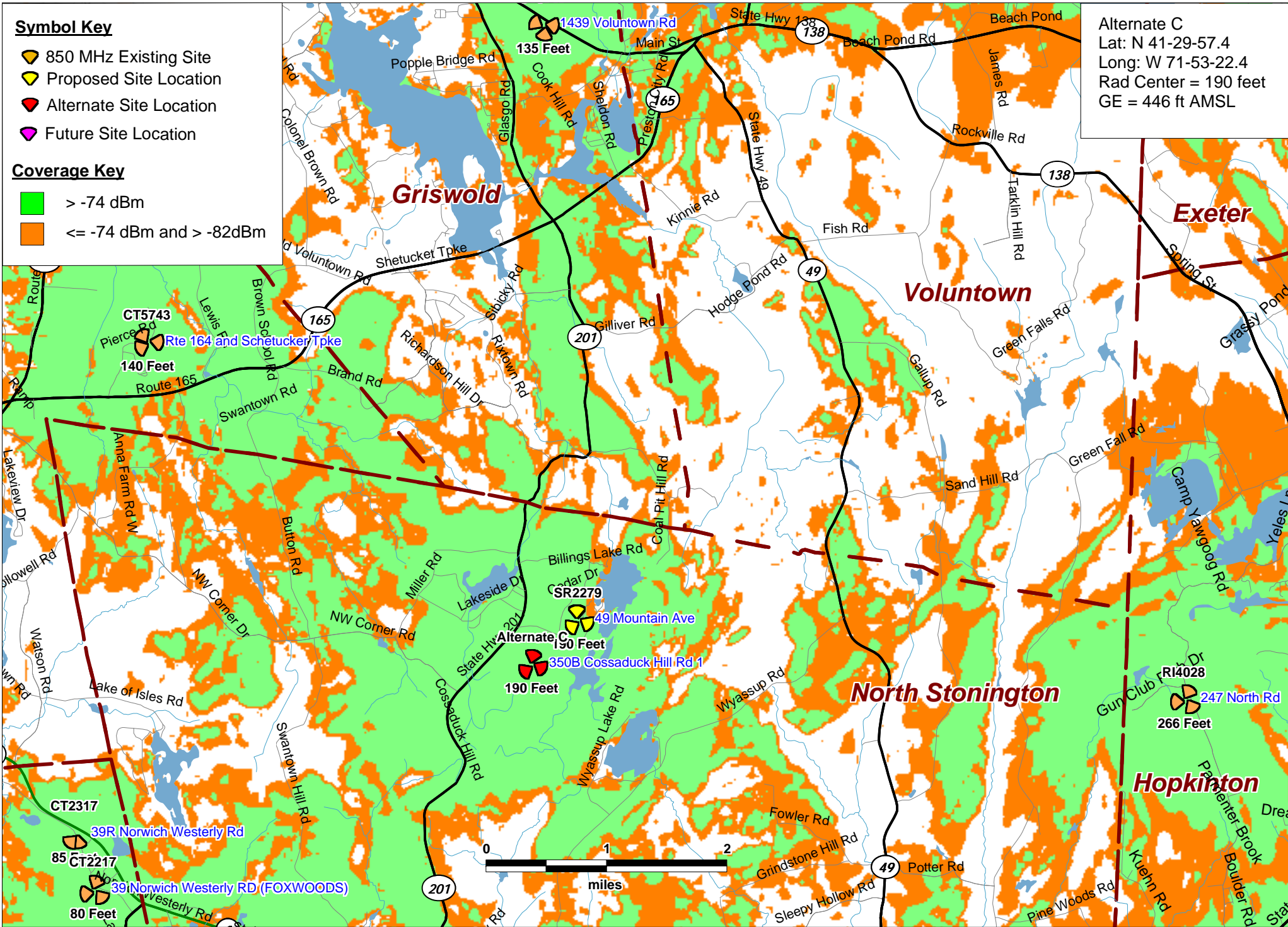
**Symbol Key**

-  850 MHz Existing Site
-  Proposed Site Location
-  Alternate Site Location
-  Future Site Location

**Coverage Key**

-  > -74 dBm
-  <= -74 dBm and > -82dBm

Alternate C  
 Lat: N 41-29-57.4  
 Long: W 71-53-22.4  
 Rad Center = 190 feet  
 GE = 446 ft AMSL



Existing & Alternate C Coverage

North Stonington, CT

49 Mountain Ave  
 North Stonington, CT 06359

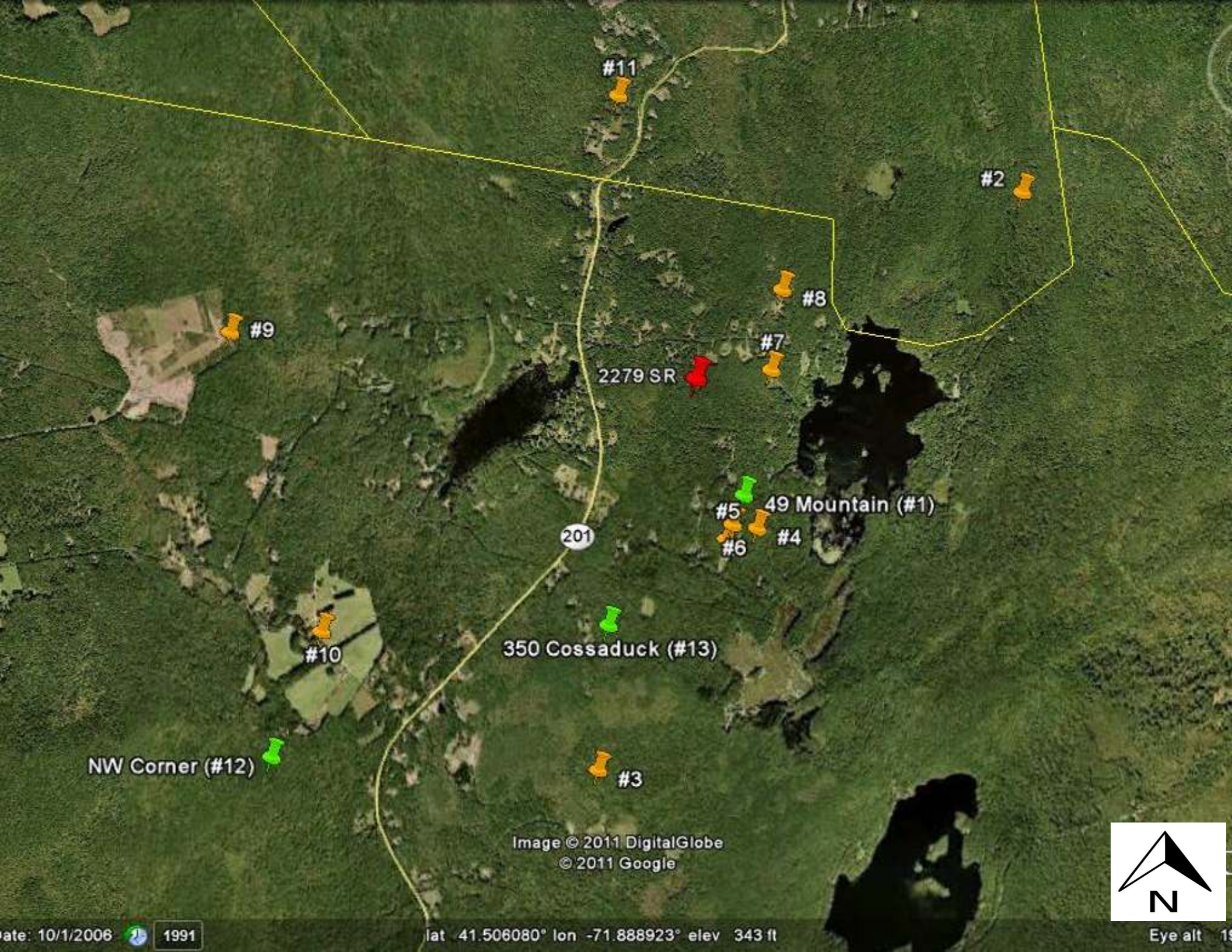


PREPARED ON  
 DATE: 10/03/2011

REV 0

## Attachment F





#11

#2

#9

#8

#7

2279 SR

#5

#6

#4

49 Mountain (#1)

201

#10

350 Cossaduck (#13)

NW Corner (#12)

#3

Image © 2011 DigitalGlobe  
© 2011 Google





## Site Search Summary – Revised

Analysis of the communications towers located within 4 miles of the search area indicated that none of these towers would provide adequate coverage to the area targeted for service by the proposed North Stonington Facility. There are no existing or approved structures within the search area adequate to meet the coverage requirements of the proposed Facility.

SBA and AT&T investigated several locations where the construction of a new tower might be feasible. The description of the individual sites investigated is set forth below. Where applicable, the reason for eliminating the property is also included. Following these descriptions is a map indicating the location of all sites investigated.

1. Address: 49 Mountain Avenue  
Parcel ID: 45-0832  
Owner: Tucker Village LLC  
Zoning District: R80  
Lot Size: Approximately 2.24 Acres

This property is the primary candidate site.

2. Address: 207 Coal Pit Hill Road (off Cossaduck) (Camp Wightman)  
Parcel ID: 46-3527  
Owner: American Baptist Churches of CT  
Zoning District: R80  
Lot Size: Approximately 202.57 Acres

This property was pursued by SBA; however both AT&T and Verizon indicated that this site does not provide adequate coverage for the search area for either of those carriers.

3. Address: Wyassup Road  
Parcel ID: 70-6609  
Owner: State of CT, Pachaug State Forest  
Zoning District: EXP Forest  
Lot Size: Approximately 1319.51 Acres

This parcel is Connecticut State Forest land and is not available for lease.

4. Address: 53 Legend Wood Road  
Parcel ID: 45-9552  
Owner: Tucker Village LLC  
Zoning District: R80  
Lot Size: Approximately 7.7 Acres

Landowner not interested in leasing this parcel. In addition, parcel terrain not conducive to a cell site

5. Address: 51 Legend Wood Road  
Parcel ID: 45-9551  
Owner: Tucker Village LLC  
Zoning District: R80  
Lot Size: Approx. 4.44 acres

Landowner not interested in leasing this parcel. Parcel is currently being developed for housing.

6. Address: 49 Legend Wood Road  
Parcel ID: 45-9550  
Owner: Tucker Village LLC  
Zoning District: R80  
Lot Size: Approx. 4.29 acres

Landowner not interested in leasing this parcel. Parcel is currently being developed for housing.

7. Address: 54 Billings Lake Road  
Parcel ID: 45-7189  
Owner: Munroe  
Zoning District: R80  
Lot Size: Approx. 3.72 acres

Landowner initially interested, but decided not to lease due to concerns about visual impacts to their proposed residence.

8. Address: 59 Billings Lake Road  
Parcel ID: 35-3787  
Owner: Lacava  
Zoning District: R80  
Lot Size: Approx. 3.1 acres

Previous Landowner (via the Estate of LaChapelle) was interested, but there were reportedly deed restrictions with respect to commercial development and neighborhood opposition. The property was subsequently sold in February, 2011.

9. Address: 42 Button Road (Bison Brook Farm)  
Parcel ID: 44-6155  
Owner: Bison Brook Farms, Inc.  
Zoning District: R80  
Lot Size: Approx. 118 acres

Rejected by AT&T's radio frequency engineers (left large gap to the north).

10. Address: Northwest Corner Road  
Parcel ID: 56-4718  
Owner: Williams  
Zoning District: R80  
Lot Size: Approx. 123.39 acres

Rejected by AT&T's radio frequency engineers (left large gap to the north).

11. Address: 2461 Glasgo Road, Griswold  
Parcel ID: 99-160-13  
Owner: Johnson  
Zoning District: R80  
Lot Size: Approx. 85.3 acres

Rejected as coverage would be redundant with other facilities.

12. Address 23/25 Northwest Corner Road  
Parcel IDs: 56-3697 / 56-2831  
Owner: Bergs  
Zoning District: R80  
Lot Sizes: 13.23/86.2

*This is an alternate candidate site.*

13 Address 350B Cossaduck Hill Road  
Parcel ID: 57-6637  
Owner: Buehler  
Zoning District: R80  
Lot size 11.66

*This is an alternate candidate site.*