



Lee D. Hoffman
90 State House Square
Hartford, CT 06103-3702
p 860 424 4315
f 860 424 4370
lhoffman@pullcom.com
www.pullcom.com

September 8, 2022

VIA ELECTRONIC FILING AND HAND DELIVERY

Melanie Bachman
Executive Director/Staff Attorney
Connecticut Siting Council
10 Franklin Square
New Britain, CT 06051

Re: Docket No. 492 - Gravel Pit Solar – Application for Certificate of Environmental Compatibility and Public Need for the construction, maintenance, and operation of a 120-megawatt-AC solar photovoltaic electric generating facility on eight parcels generally located to the east and west of the Amtrak and Connecticut Rail Line, south of Apothecaries Hall Road and north of the South Windsor town boundary in East Windsor, Connecticut and associated electrical interconnection.

Dear Ms. Bachman:

I am writing on behalf of my client, Gravel Pit Solar (“GPS”) in connection with the above-referenced Docket. As you are aware, on February 10, 2022, the Council approved GPS’s Phase II Development and Management Plan (“D&M Plan”) submittal in the above-referenced Docket, after previously approving GPS’s Phase I D&M Plan.

GPS would like to make minor amendments to the D&M Plan following its consultation with Eversource. GPS proposes the following electric design updates: two new gates that will allow Eversource to access the existing 115kV transmission corridor throughout the life of the project and a reduction in grading along the slope adjacent to the GPS substation and Eversource Switchyard.

There will not be changes to stormwater management as a result of these changes, and the Connecticut Department of Energy and Environmental Protection (DEEP) has approved the proposed amendments to the D&M Plan from a stormwater permitting perspective. Enclosed is confirmation of such approval.

In addition, GPS is providing updates in accordance with the Council’s approval of its D&M Plan. Enclosed with this letter are stamped racking plans for both the fixed racking and tracker racking to fulfill Condition 1 of the D&M Plan approval. Also enclosed are datasheets describing the proposed modules and inverters for the project.

Finally, VHB was retained by GPS to evaluate the sound impact for this project, given the proposed modules, inverters and layout of the project. VHB informed GPS that the expected sound levels are in compliance with the DEEP’s regulatory limits. Specifically, VHB’s analysis evaluated the potential sound level impacts from the 40 inverters (Sungrow), two transformers and 300 tracking system motors

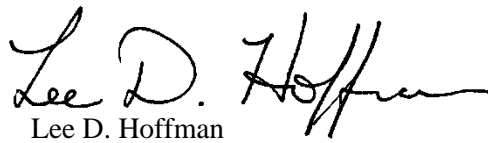
Page 2

operating simultaneously. The sound levels attributed to the proposed equipment ranges from 17 dBA to 49 dBA. During the daytime period, the receptor locations will experience overall sound levels (ambient plus project contributions) ranging from approximately 35 dBA to 50 dBA. These sound levels are below CT DEEP's daytime criteria of 55 dBA. Due to the nature of the Project, the equipment will not be operating during the nighttime period. An Acoustic Assessment Figure from VHB supporting this finding is enclosed with this letter.

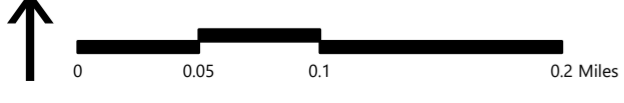
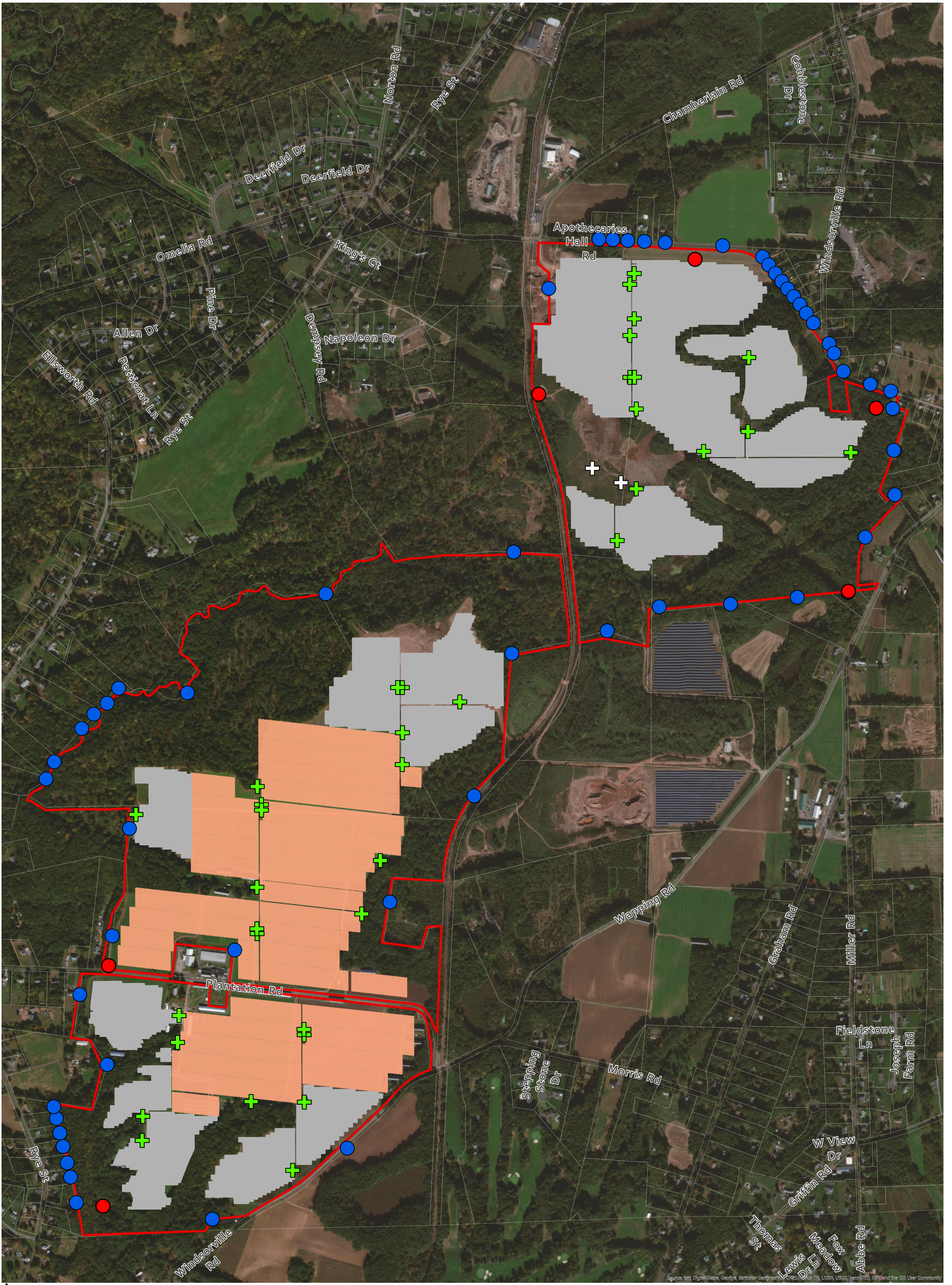
GPS does not expect that the proposed amendments to the D&M Plan discussed above will have significant impact on the project or the surrounding area. GPS therefore requests the Council's approval of these changes.

If there are any questions concerning this submittal, please contact me directly. I certify that a copy of this submittal has been submitted to the parties listed on the service list for this Docket.

Sincerely,


Lee D. Hoffman

Enclosures



- + Inverters
- + Transformers
- Receptor Locations
- Monitoring Locations
- Project Site
- Tracking Panels
- Fixed-Panels

Gravel Pit Solar | East Windsor, CT

Acoustical Assessment

Source: Esri, DigitalGlobe, GeoEye, Earthstar Geographics, CNES/Airbus DS, USDA, USGS, AeroGRID, IGN, and the GIS User Community