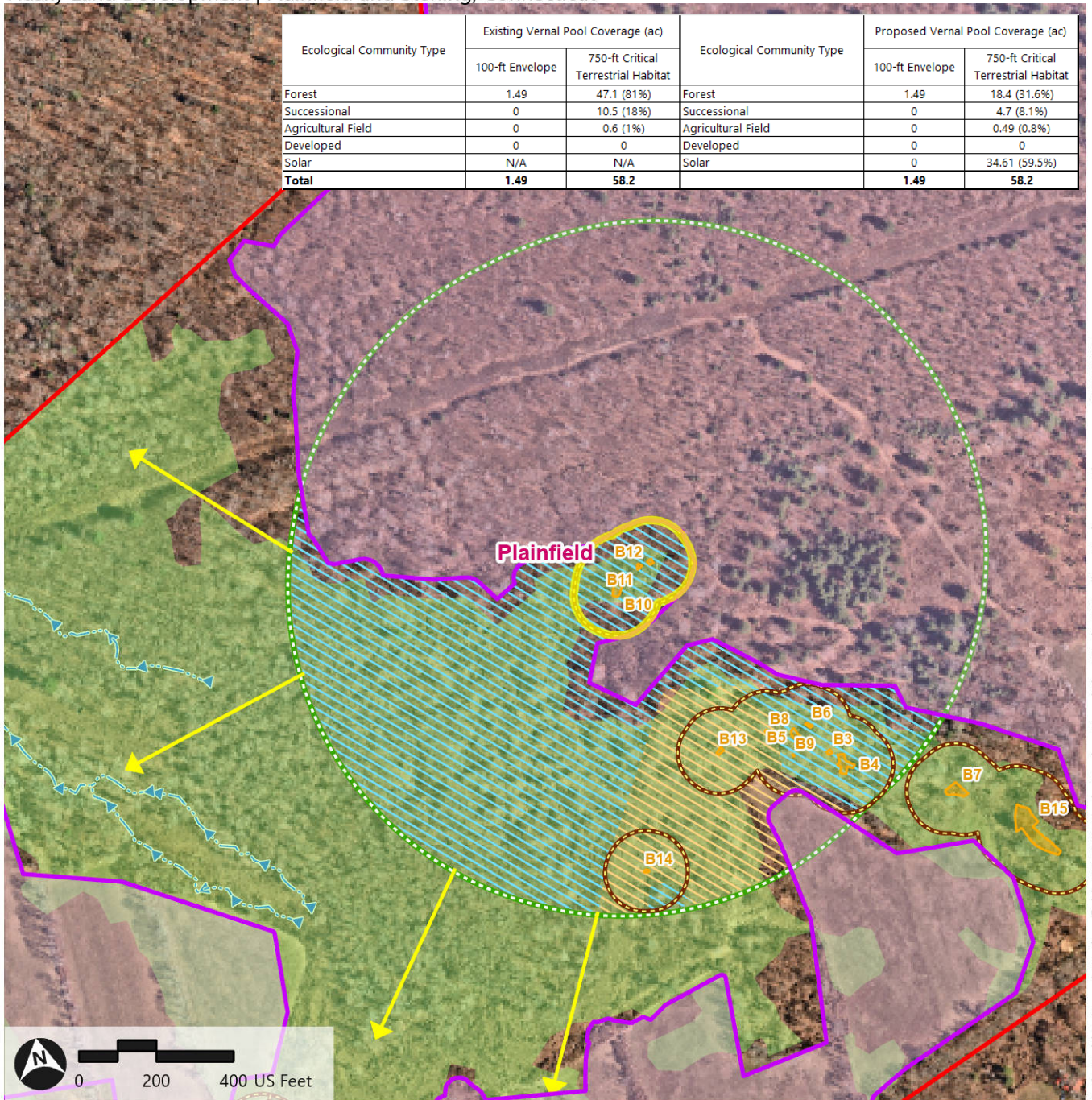


Figure 1.A: Metapool A Terrestrial Habitat Map
Vernal Pools B10, B11, and B12
 Husky Land Development | Plainfield and Sterling, Connecticut



Ecological Community Type	Existing Vernal Pool Coverage (ac)		Ecological Community Type	Proposed Vernal Pool Coverage (ac)	
	100-ft Envelope	750-ft Critical Terrestrial Habitat		100-ft Envelope	750-ft Critical Terrestrial Habitat
Forest	1.49	47.1 (81%)	Forest	1.49	18.4 (31.6%)
Successional	0	10.5 (18%)	Successional	0	4.7 (8.1%)
Agricultural Field	0	0.6 (1%)	Agricultural Field	0	0.49 (0.8%)
Developed	0	0	Developed	0	0
Solar	N/A	N/A	Solar	0	34.61 (59.5%)
Total	1.49	58.2		1.49	58.2



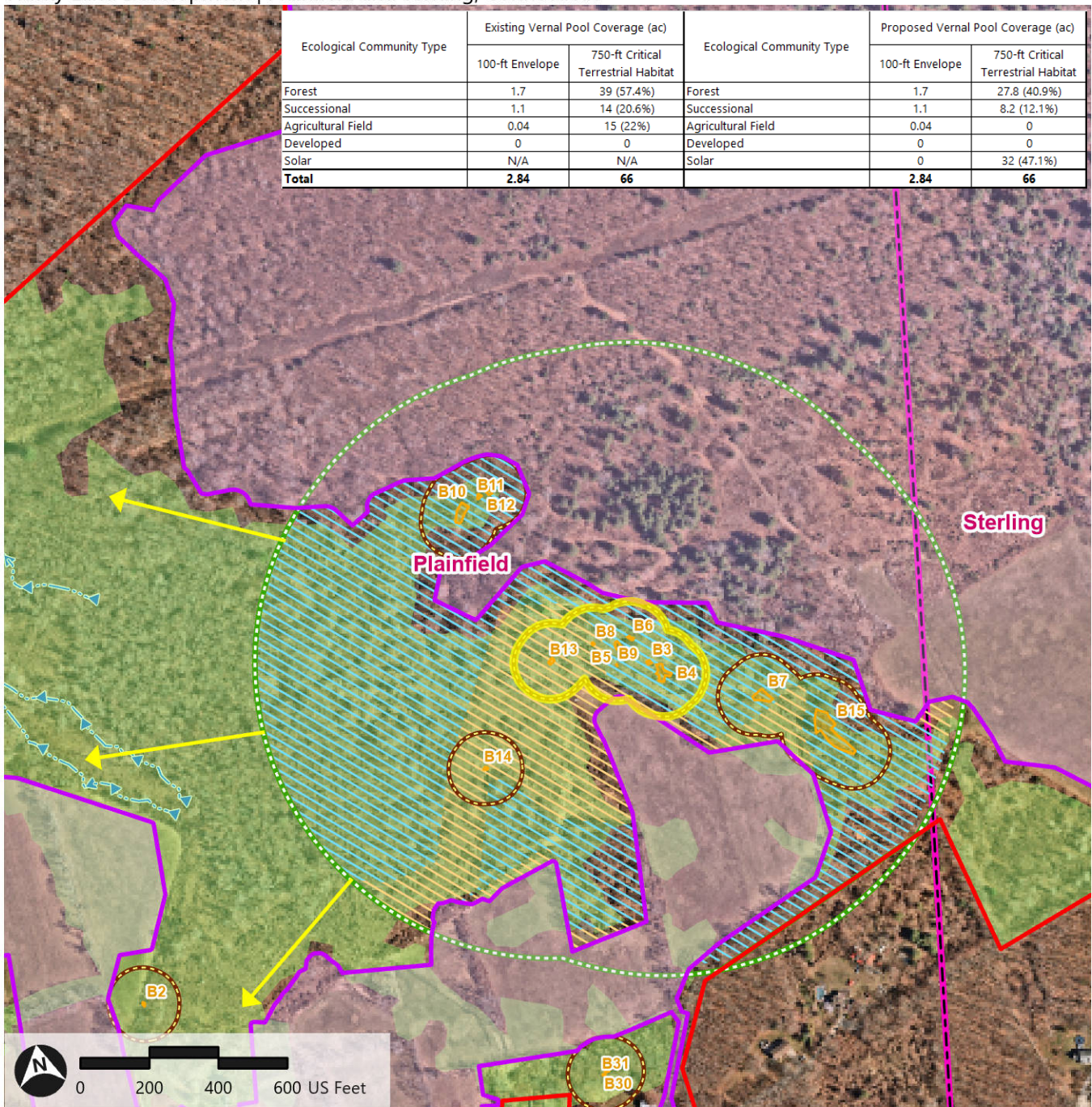
- Bellavance Property
- 100-ft Vernal Pool Envelope
- Delineated Wetland Area
- Limit of Disturbance
- 750-ft Critical Terrestrial Habitat
- Approximate Stream Location
- Delineated Cryptic Vernal Pool
- 1,200-ft Directional Buffer
- Town Boundary
- Maintained Successional Habitat
- Maintained Forest Habitat

Path: \\vhb\gis\proj\Wethersfield\43258.01 Husky Design-Permitting\Project\Sterling Husky.aprx (sberryman, 7/2/2026)

Figure 1.B: Metapool B Terrestrial Habitat Map
Vernal Pools B3-B6, B8, B9, and B13



Husky Land Development | Plainfield and Sterling, Connecticut



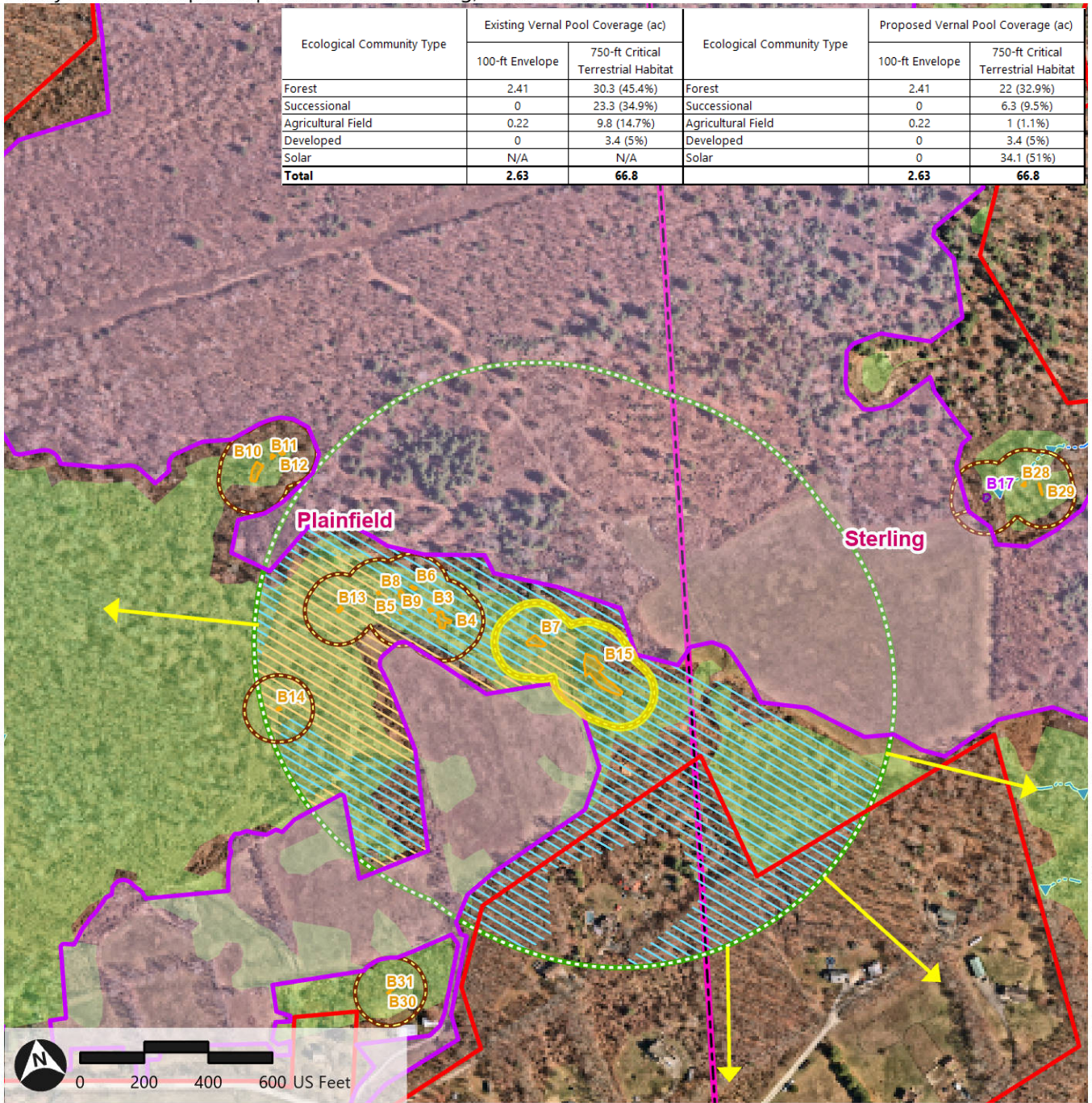
Path: \\vhb\gis\proj\Wethersfield\43258.01 Husky Design-Permitting\Project\Sterling Husky.aprx (sberryman, 7/2/2026)

- Bellavance Property
- 100-ft Vernal Pool Envelope
- Delineated Wetland Area
- Limit of Disturbance
- 750-ft Critical Terrestrial Habitat
- Approximate Stream Location
- Delineated Cryptic Vernal Pool
- 1,200-ft Directional Buffer
- Town Boundary
- Maintained Successional Habitat
- Maintained Forest Habitat

Figure 1.C: Metapool C Terrestrial Habitat Map
Vernal Pools B7 and B15



Husky Land Development | Plainfield and Sterling, Connecticut



Ecological Community Type	Existing Vernal Pool Coverage (ac)		Ecological Community Type	Proposed Vernal Pool Coverage (ac)	
	100-ft Envelope	750-ft Critical Terrestrial Habitat		100-ft Envelope	750-ft Critical Terrestrial Habitat
Forest	2.41	30.3 (45.4%)	Forest	2.41	22 (32.9%)
Successional	0	23.3 (34.9%)	Successional	0	6.3 (9.5%)
Agricultural Field	0.22	9.8 (14.7%)	Agricultural Field	0.22	1 (1.1%)
Developed	0	3.4 (5%)	Developed	0	3.4 (5%)
Solar	N/A	N/A	Solar	0	34.1 (51%)
Total	2.63	66.8		2.63	66.8

-
-
-
-
-
-
-
-
-
-
-
-
-
-
-
-
-

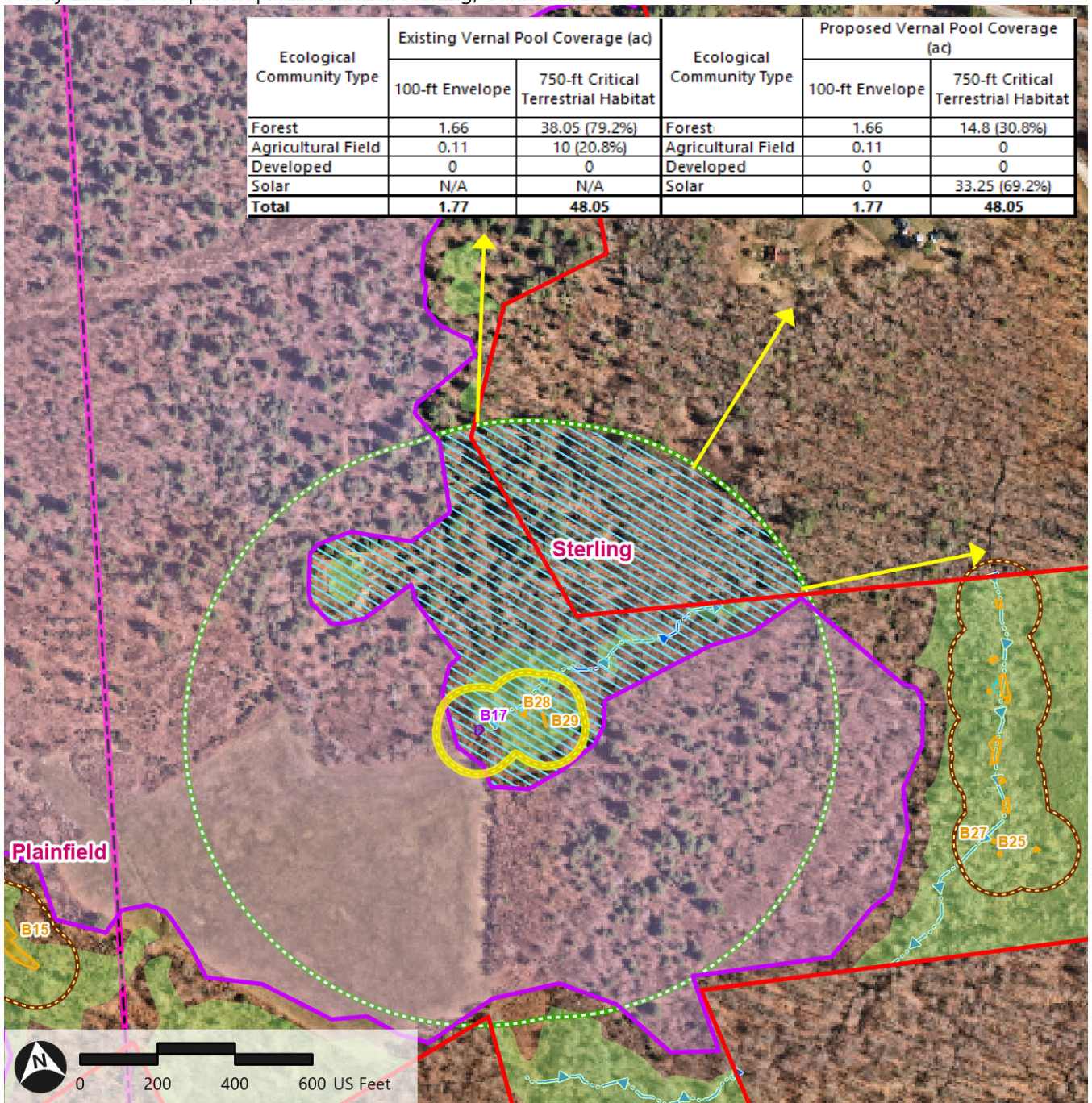
Source: Nearmap, CTDEEP, VHB

Path: \\vhb\gis\proj\Wethersfield\43258.01 Husky Design-Permitting\Project\Sterling Husky.aprx (sberryman, 7/2/2026)

Figure 1.D: Metapool D Terrestrial Habitat Map
Vernal Pools B17, B28, and B29



Husky Land Development | Plainfield and Sterling, Connecticut



Ecological Community Type	Existing Vernal Pool Coverage (ac)		Ecological Community Type	Proposed Vernal Pool Coverage (ac)	
	100-ft Envelope	750-ft Critical Terrestrial Habitat		100-ft Envelope	750-ft Critical Terrestrial Habitat
Forest	1.66	38.05 (79.2%)	Forest	1.66	14.8 (30.8%)
Agricultural Field	0.11	10 (20.8%)	Agricultural Field	0.11	0
Developed	0	0	Developed	0	0
Solar	N/A	N/A	Solar	0	33.25 (69.2%)
Total	1.77	48.05		1.77	48.05

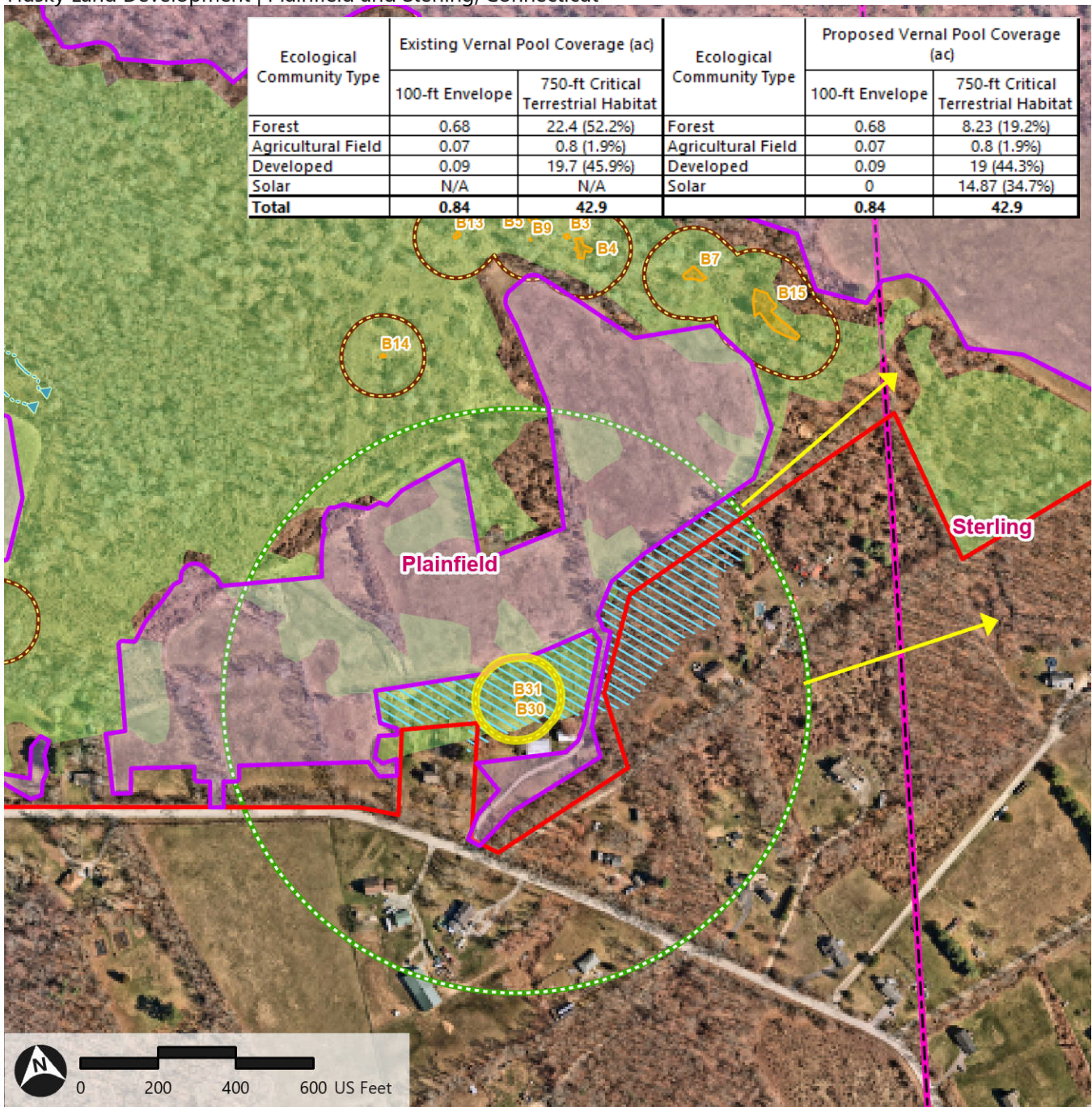
- Bellavance Property
- Limit of Disturbance
- Delineated Classic Vernal Pool
- Delineated Cryptic Vernal Pool
- 100-ft Vernal Pool Envelope
- 750-ft Critical Terrestrial Habitat
- ➔ 1,200-ft Directional Buffer
- Maintained Forest Habitat
- Delineated Wetland Area
- ⋯ Approximate Stream Location
- Town Boundary

Path: \\vhb\gis\proj\Wethersfield\43258.01 Husky Design-Permitting\Project\Sterling Husky.aprx (sberryman, 6/30/2026)

Figure 1.E: Metapool E Terrestrial Habitat Map

Vernal Pools B30 and B31

Husky Land Development | Plainfield and Sterling, Connecticut



Ecological Community Type	Existing Vernal Pool Coverage (ac)		Ecological Community Type	Proposed Vernal Pool Coverage (ac)	
	100-ft Envelope	750-ft Critical Terrestrial Habitat		100-ft Envelope	750-ft Critical Terrestrial Habitat
Forest	0.68	22.4 (52.2%)	Forest	0.68	8.23 (19.2%)
Agricultural Field	0.07	0.8 (1.9%)	Agricultural Field	0.07	0.8 (1.9%)
Developed	0.09	19.7 (45.9%)	Developed	0.09	19 (44.3%)
Solar	N/A	N/A	Solar	0	14.87 (34.7%)
Total	0.84	42.9		0.84	42.9

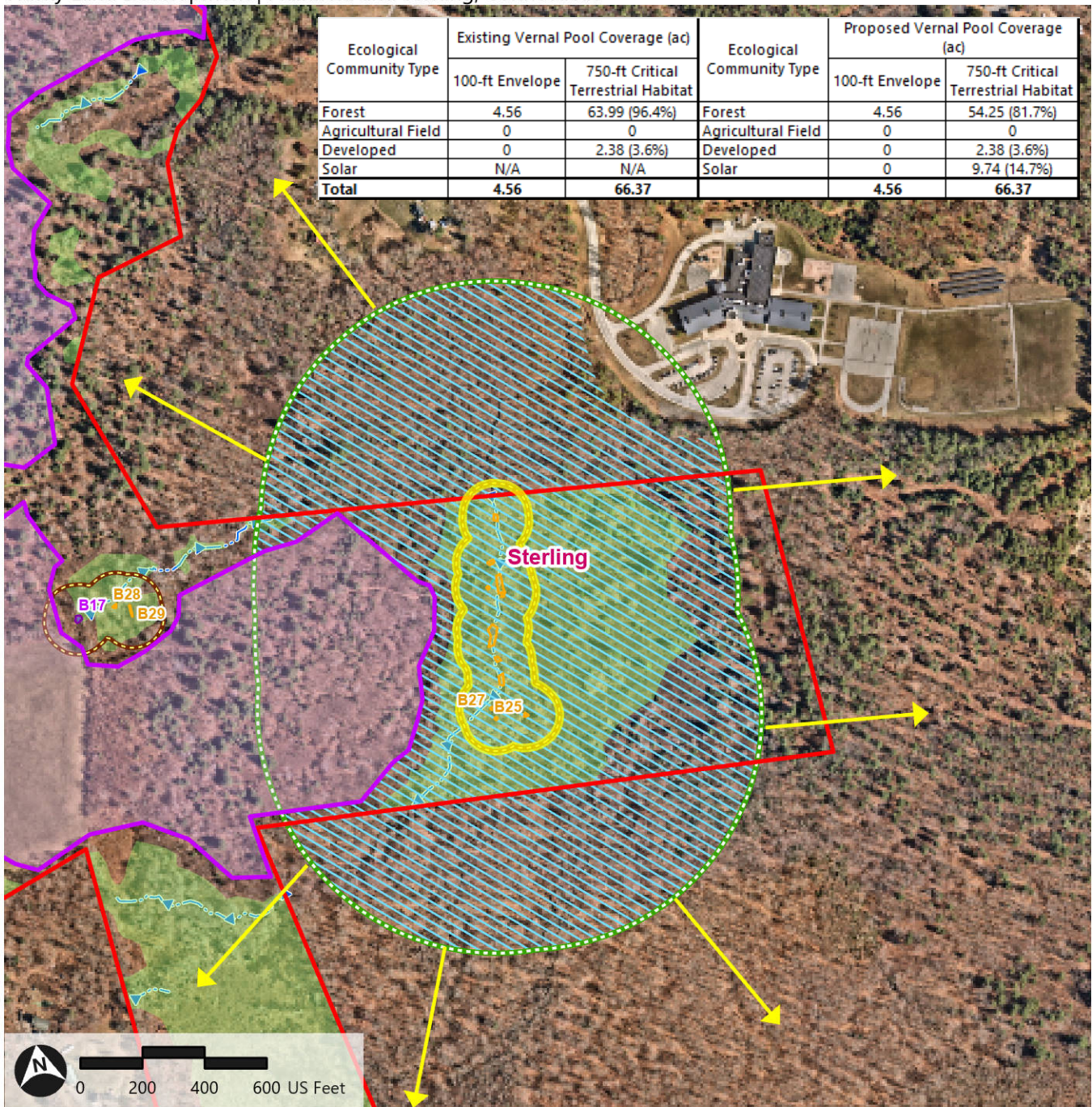
- Bellavance Property
- 100-ft Vernal Pool Envelope
- Delineated Wetland Area
- Limit of Disturbance
- 750-ft Critical Terrestrial Habitat
- ▶ Approximate Stream Location
- Delineated Cryptic Vernal Pool
- ➔ 1,200-ft Directional Buffer
- Town Boundary
- Maintained Forest Habitat

Path: \\vhb\gis\proj\Wethersfield\43258.01 Husky Design-Permitting\Project\Sterling Husky.aprx (sberryman, 6/30/2026)

Figure 1.F: Metapool F Terrestrial Habitat Map
Vernal Pools B18-B27



Husky Land Development | Plainfield and Sterling, Connecticut

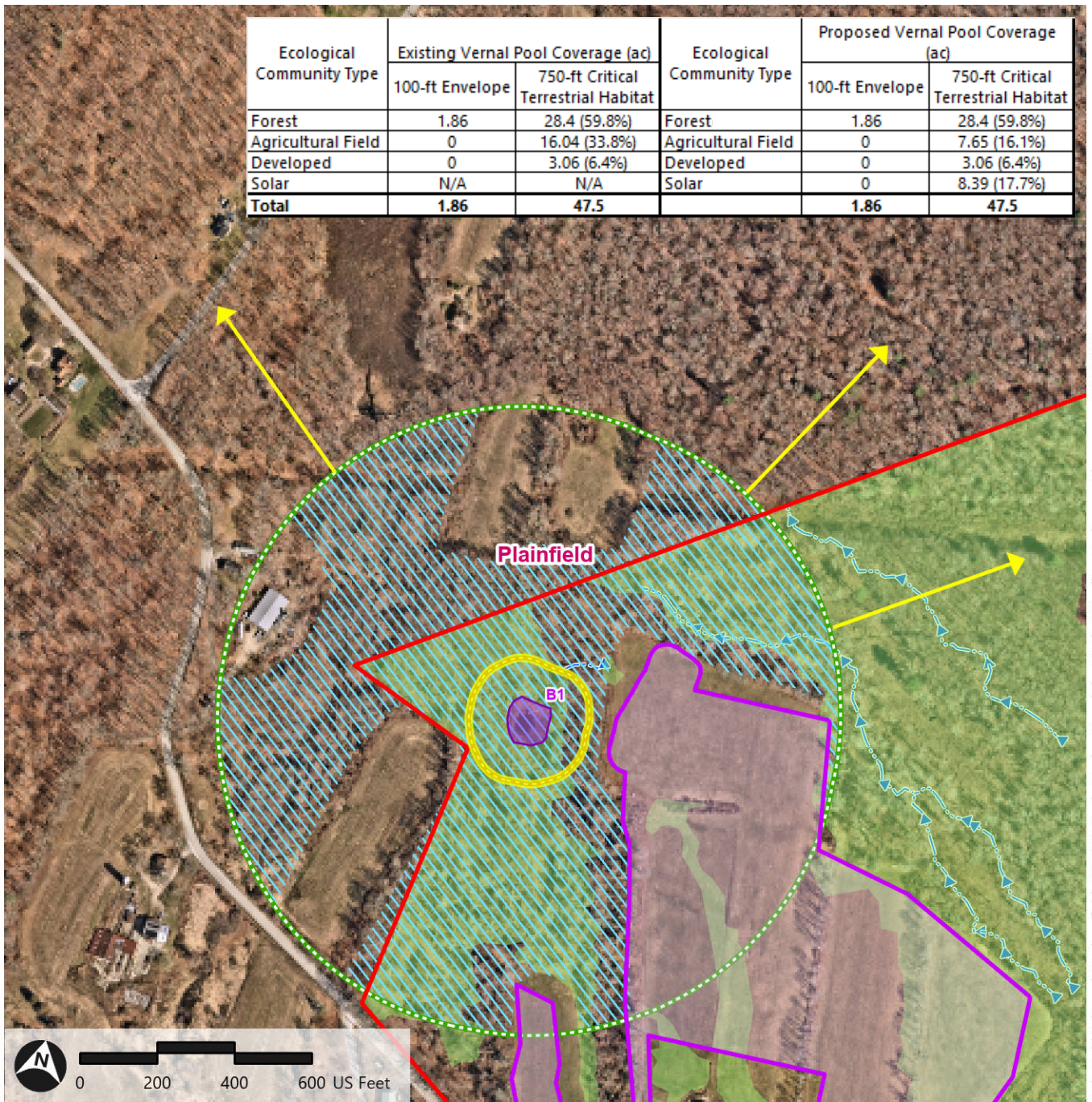


Path: \\vhb\gis\proj\Wethersfield\43258.01 Husky Design-Permitting\Project\Sterling Husky.aprx (sberryman, 6/30/2026)

- Bellavance Property
- Limit of Disturbance
- Delineated Classic Vernal Pool
- Delineated Cryptic Vernal Pool
- 100-ft Vernal Pool Envelope
- 750-ft Critical Terrestrial Habitat
- ➔ 1,200-ft Directional Buffer
- Maintained Forest Habitat
- Delineated Wetland Area
- ⋯ Approximate Stream Location
- Town Boundary

Figure 1.G Vernal Pool B1 Terrestrial Habitat Map

Husky Land Development | Plainfield and Sterling, Connecticut

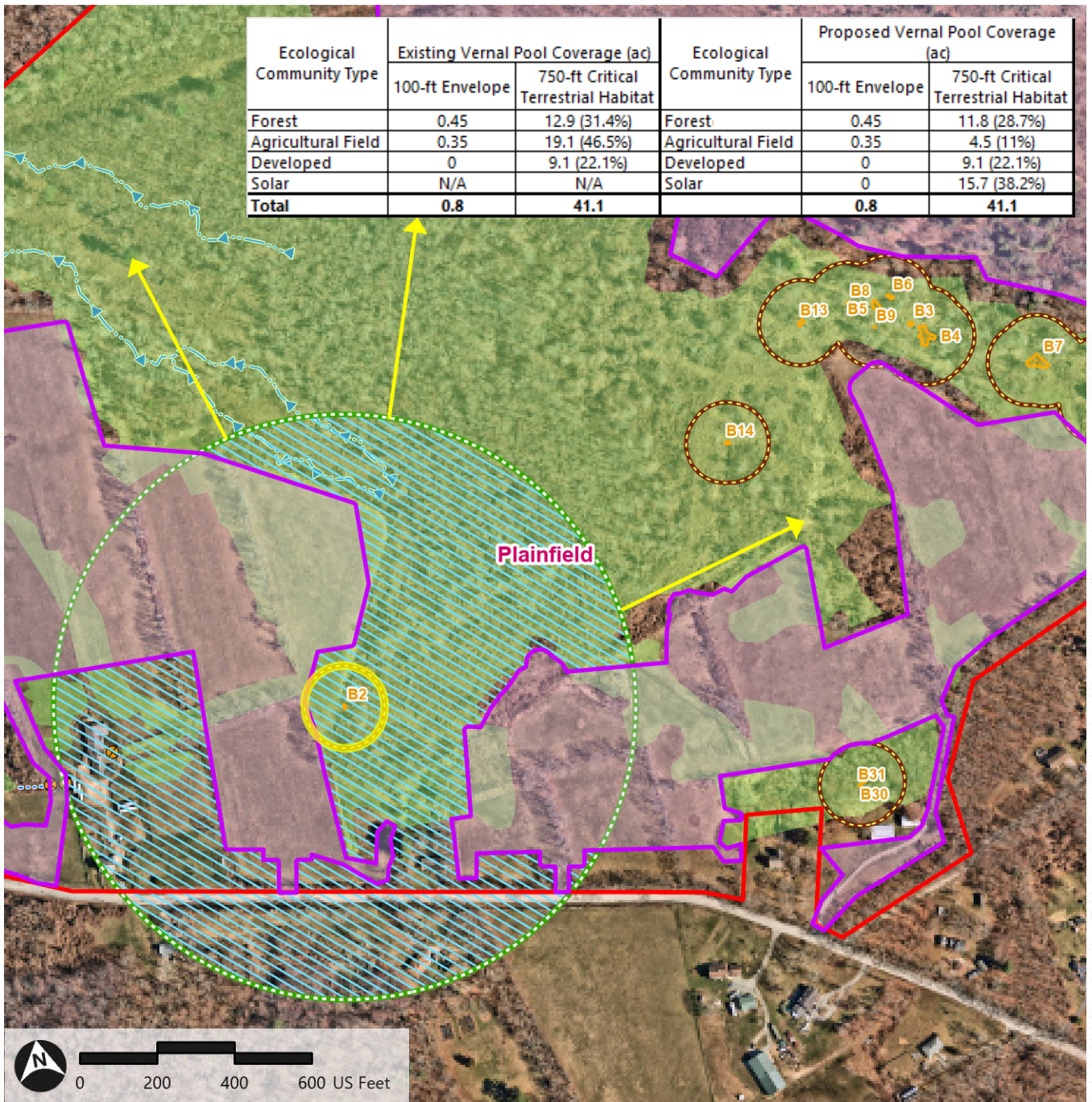


Path: \\vhb\gis\proj\Wethersfield\43258.01 Husky Design-Permitting\Project\Sterling Husky.aprx (sberryman, 6/30/2026)

- Bellavance Property
- 100-ft Vernal Pool Envelope
- Delineated Wetland Area
- Limit of Disturbance
- 750-ft Critical Terrestrial Habitat
- Approximate Stream Location
- Delineated Classic Vernal Pool
- 1,200-ft Directional Buffer
- Town Boundary
- Maintained Forest Habitat

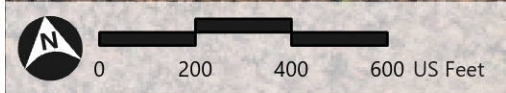
Figure 1.H: Vernal Pool B2 Terrestrial Habitat Map

Husky Land Development | Plainfield and Sterling, Connecticut



Ecological Community Type	Existing Vernal Pool Coverage (ac)		Ecological Community Type	Proposed Vernal Pool Coverage (ac)	
	100-ft Envelope	750-ft Critical Terrestrial Habitat		100-ft Envelope	750-ft Critical Terrestrial Habitat
Forest	0.45	12.9 (31.4%)	Forest	0.45	11.8 (28.7%)
Agricultural Field	0.35	19.1 (46.5%)	Agricultural Field	0.35	4.5 (11%)
Developed	0	9.1 (22.1%)	Developed	0	9.1 (22.1%)
Solar	N/A	N/A	Solar	0	15.7 (38.2%)
Total	0.8	41.1		0.8	41.1

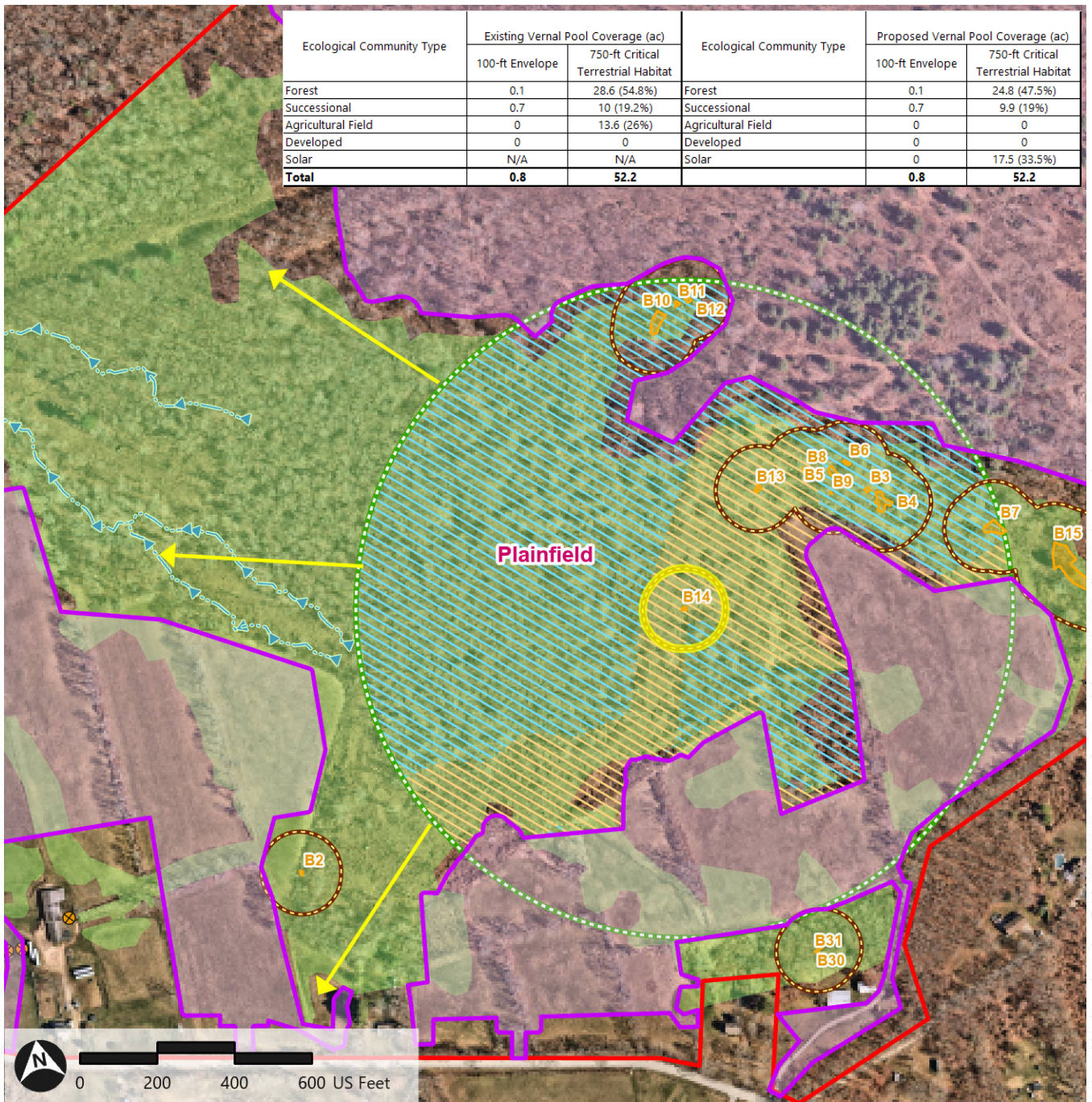
Path: \\vhb\gis\proj\Wethersfield\43258.01 Husky Design-Permitting\Project\Sterling Husky.aprx (sberryman, 6/30/2026)



- Bellavance Property
- 100-ft Vernal Pool Envelope
- Delineated Wetland Area
- 750-ft Critical Terrestrial Habitat
- ▶ Approximate Stream Location
- Town Boundary
- Delineated Cryptic Vernal Pool
- ➔ 1,200-ft Directional Buffer
- Maintained Forest Habitat

Source: Nearmap, CTDEEP, VHB

Figure 1.I: Vernal Pool B14 Terrestrial Habitat Map
 Husky Land Development | Plainfield and Sterling, Connecticut



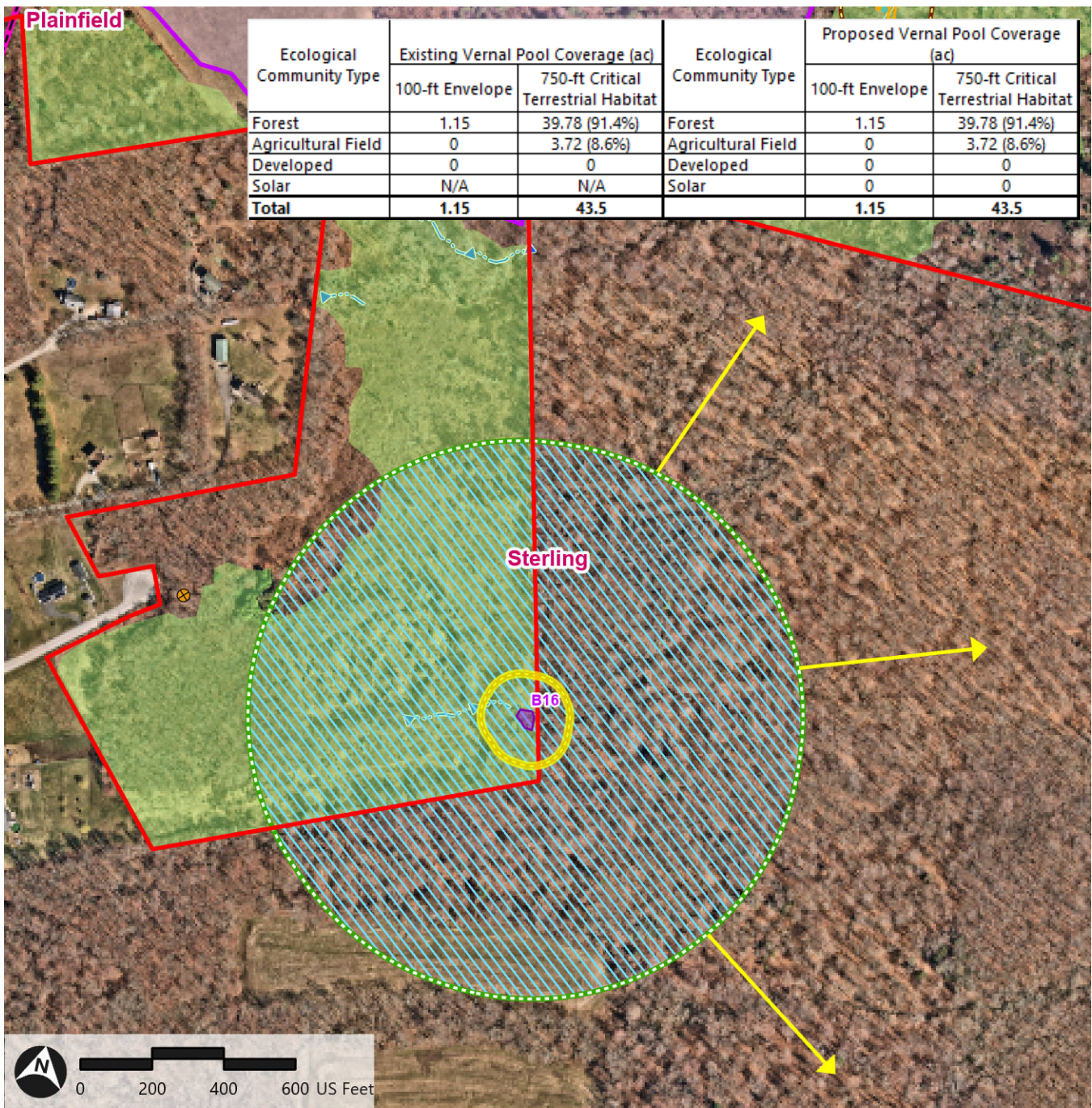
Ecological Community Type	Existing Vernal Pool Coverage (ac)		Ecological Community Type	Proposed Vernal Pool Coverage (ac)	
	100-ft Envelope	750-ft Critical Terrestrial Habitat		100-ft Envelope	750-ft Critical Terrestrial Habitat
Forest	0.1	28.6 (54.8%)	Forest	0.1	24.8 (47.5%)
Successional	0.7	10 (19.2%)	Successional	0.7	9.9 (19%)
Agricultural Field	0	13.6 (26%)	Agricultural Field	0	0
Developed	0	0	Developed	0	0
Solar	N/A	N/A	Solar	0	17.5 (33.5%)
Total	0.8	52.2		0.8	52.2

- Bellavance Property
- 100-ft Vernal Pool Envelope
- Delineated Wetland Area
- Limit of Disturbance
- 750-ft Critical Terrestrial Habitat
- Approximate Stream Location
- Delineated Cryptic Vernal Pool
- 1,200-ft Directional Buffer
- Town Boundary
- Maintained Successional Habitat
- Maintained Forest Habitat

Path: \\vhb\gis\proj\Wethersfield\43258.01 Husky Design-Permitting\Project\Sterling Husky.aprx (sberryman, 7/2/2026)

Figure 1.J: Vernal Pool B16 Terrestrial Habitat Map

Husky Land Development | Plainfield and Sterling, Connecticut



Ecological Community Type	Existing Vernal Pool Coverage (ac)		Ecological Community Type	Proposed Vernal Pool Coverage (ac)	
	100-ft Envelope	750-ft Critical Terrestrial Habitat		100-ft Envelope	750-ft Critical Terrestrial Habitat
Forest	1.15	39.78 (91.4%)	Forest	1.15	39.78 (91.4%)
Agricultural Field	0	3.72 (8.6%)	Agricultural Field	0	3.72 (8.6%)
Developed	0	0	Developed	0	0
Solar	N/A	N/A	Solar	0	0
Total	1.15	43.5		1.15	43.5

Path: \\vhb\gis\proj\Wethersfield\43258.01 Husky Design-Permitting\Project\Sterling Husky.aprx (sberryman, 6/30/2026)

- Bellavance Property
- 100-ft Vernal Pool Envelope
- Delineated Wetland Area
- 750-ft Critical Terrestrial Habitat
- ▶▶▶ Approximate Stream Location
- Delineated Classic Vernal Pool
- ➔ 1,200-ft Directional Buffer
- Town Boundary
- Delineated Cryptic Vernal Pool
- ▨▨▨ Maintained Forest Habitat

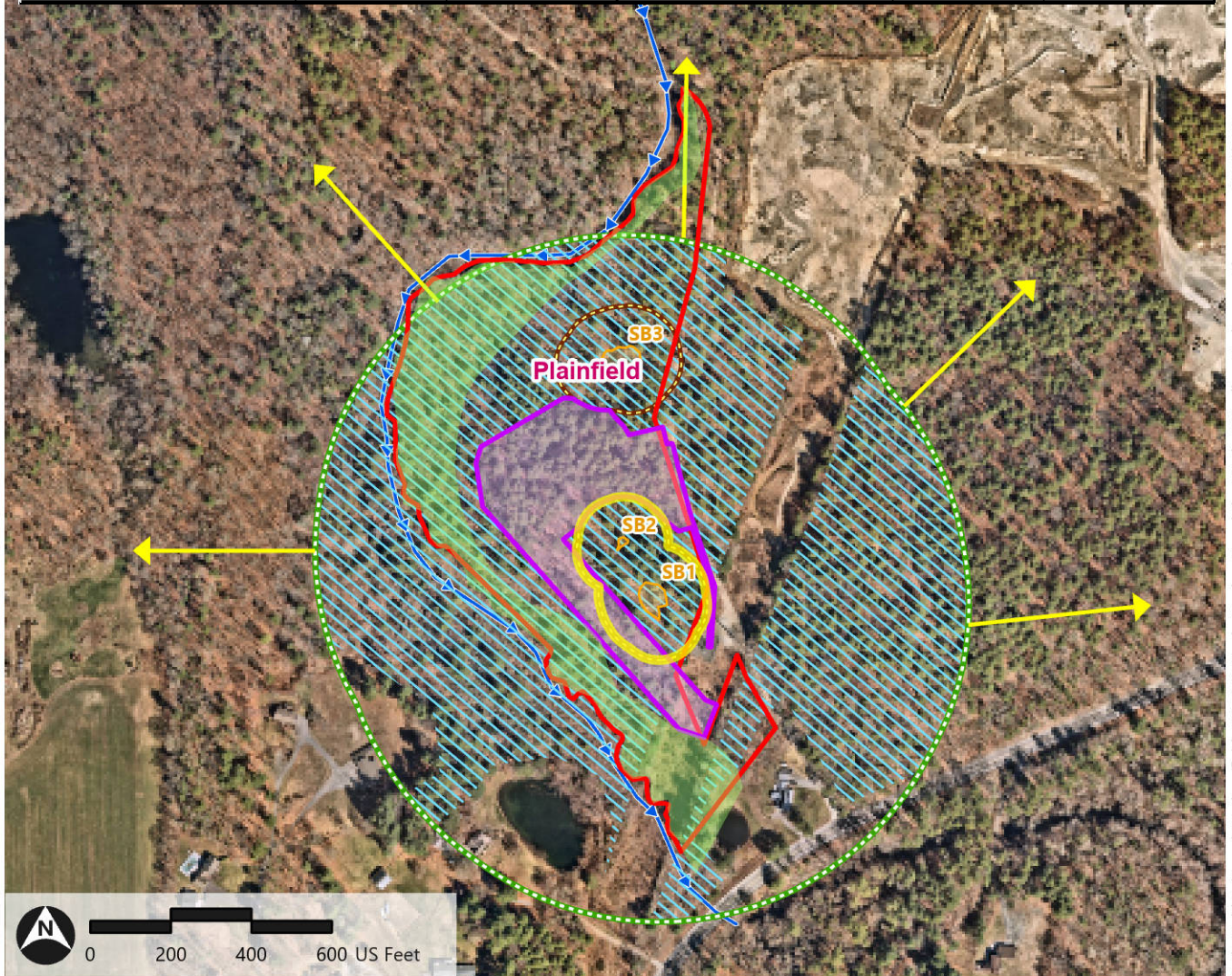
Source: Nearmap, CTDEEP, VHB

Figure 1.K: Metapool SB-A Terrestrial Habitat Map
Vernal Pools SB1 and SB2



Husky Land Development | Plainfield and Sterling, Connecticut

Ecological Community Type	Existing Vernal Pool Coverage (ac)		Ecological Community Type	Proposed Vernal Pool Coverage (ac)	
	100-ft Envelope	750-ft Critical Terrestrial Habitat		100-ft Envelope	750-ft Critical Terrestrial Habitat
Forest	1.5	37.5 (75.6%)	Forest	1.5	31.9 (64.3%)
ROW/Scrub-Shrub/Successional	0	5.5 (11.1%)	ROW/Scrub-Shrub/Successional	0	6.8 (13.7%)
Developed	0	6.6 (13.3%)	Developed	0	6.6 (13.3%)
Solar	N/A	N/A	Solar	0	4.3 (8.7%)
Total	1.5	49.6		1.5	49.6



Path: \\vhb\gis\proj\Wethersfield\43258.01 Husky Design-Permitting\Project\Sterling Husky.aprx (sbernyman, 7/1/2026)

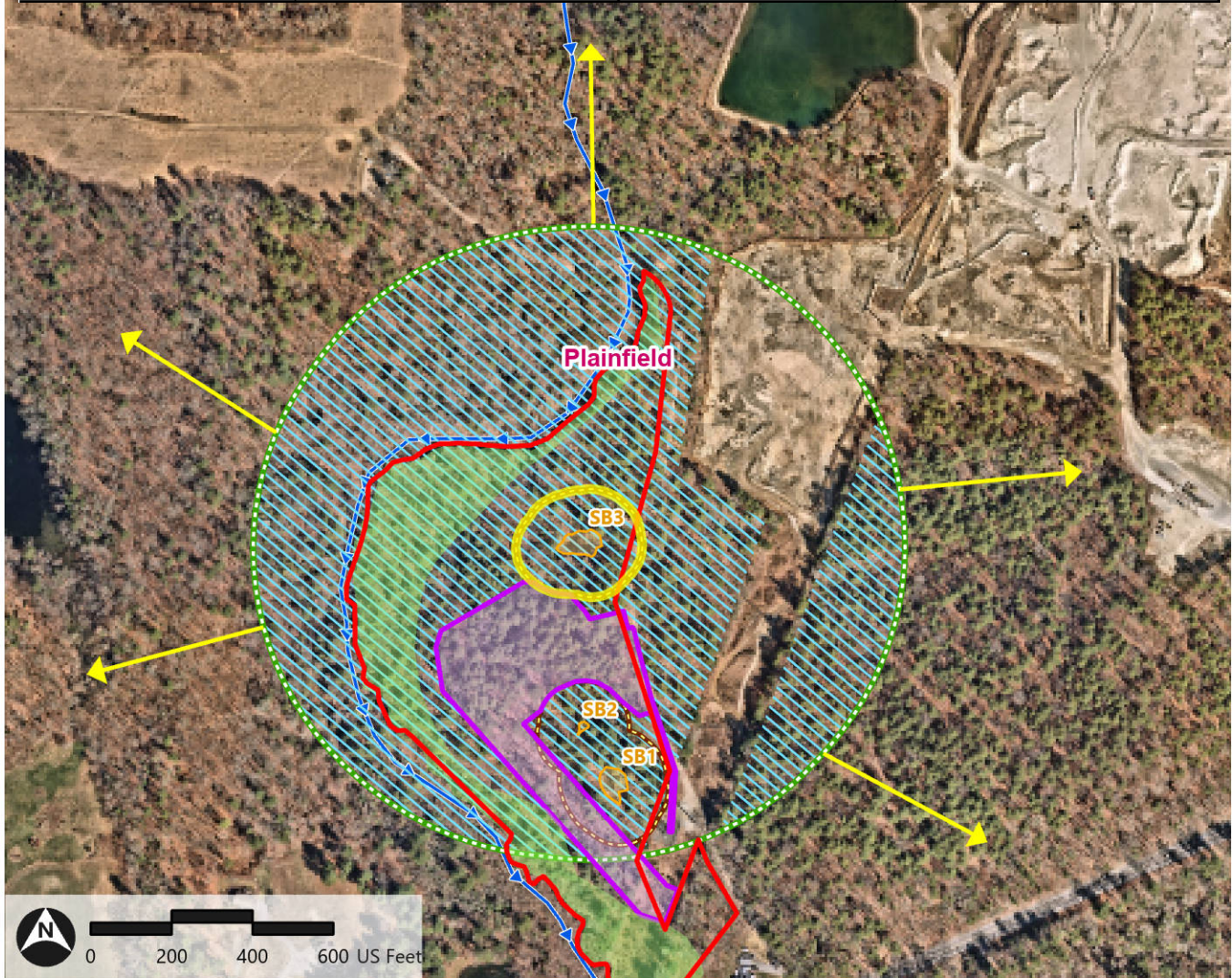
- Sugar Brook Property
- 100-ft Vernal Pool Envelope
- Delineated Wetland Area
- Limit of Disturbance
- 750-ft Critical Terrestrial Habitat
- ▶ Approximate Stream Location
- Delineated Cryptic Vernal Pool
- ➔ 1,200-ft Directional Buffer
- Town Boundary
- Maintained Forest Habitat

Figure 1.L: Vernal Pool SB3 Terrestrial Habitat Map

Husky Land Development | Plainfield and Sterling, Connecticut



Ecological Community Type	Existing Vernal Pool Coverage (ac)		Ecological Community Type	Proposed Vernal Pool Coverage (ac)	
	100-ft Envelope	750-ft Critical Terrestrial Habitat		100-ft Envelope	750-ft Critical Terrestrial Habitat
Forest	2	37.3 (81.8%)	Forest	1.7	33.5 (73.4%)
ROW/Scrub-Shrub/Successional	0	3.1 (6.8%)	ROW/Scrub-Shrub/Successional	0.3	4.56 (10%)
Developed	0	5.2 (11.4%)	Developed	0	5.2 (11.4%)
Solar	N/A	N/A	Solar	0	2.4 (5.3%)
Total	2	45.6		2	45.6



- Sugar Brook Property
- 100-ft Vernal Pool Envelope
- ▶ Approximate Stream Location
- Limit of Disturbance
- 750-ft Critical Terrestrial Habitat
- Delineated Wetland Area
- Delineated Cryptic Vernal Pool
- 1,200-ft Directional Buffer
- Town Boundary
- Maintained Forest Habitat

Path: \\vhb\gis\proj\Wethersfield\43258.01 Husky Design-Permitting\Project\Sterling Husky.aprx (sberryman, 7/1/2026)