





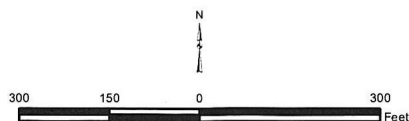
Legend

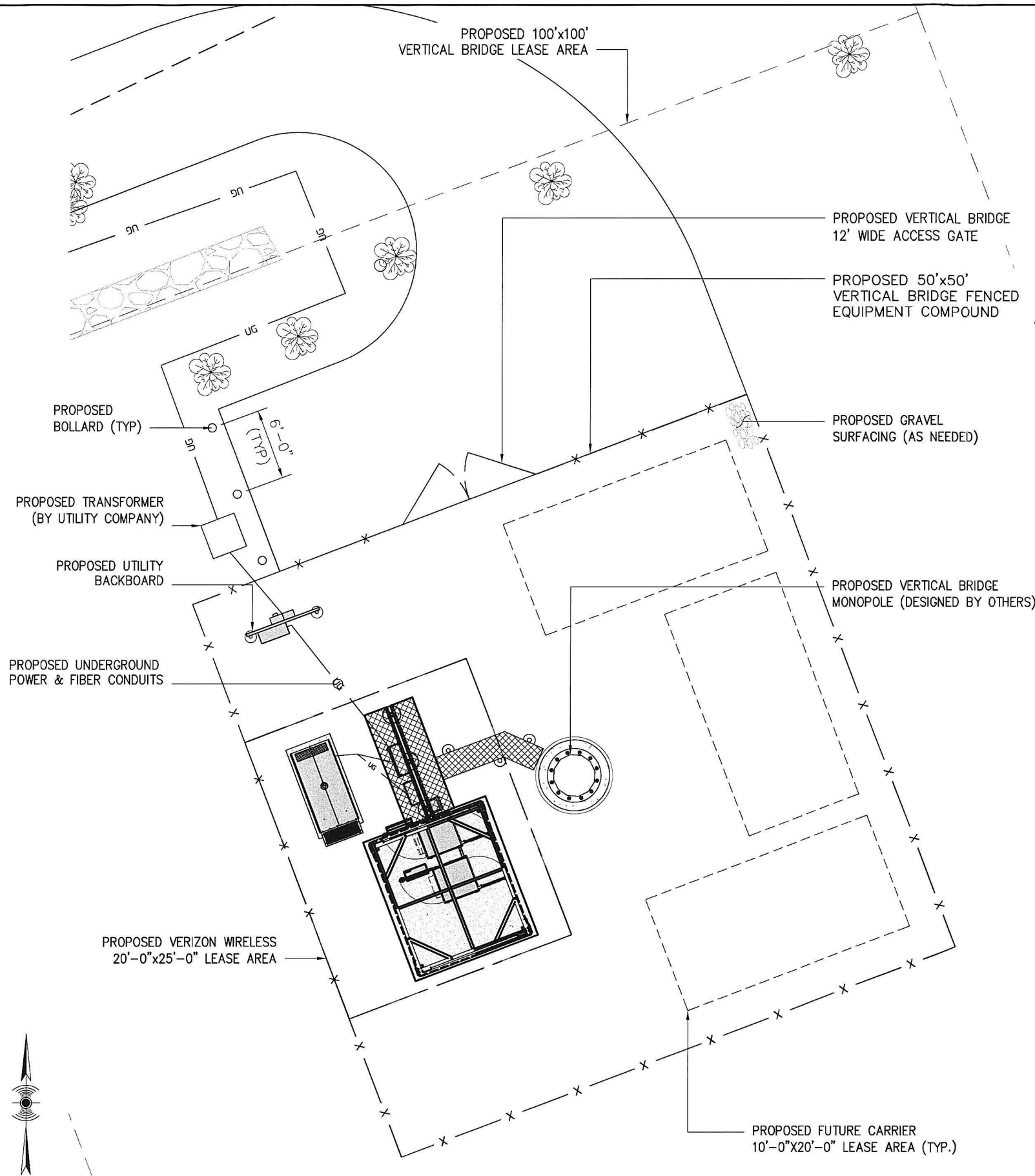
-  Proposed Vertical Bridge Lease Area
 Proposed Vertical Bridge Equipment Compound
 Proposed Vertical Bridge Equipment
 Proposed Vertical Bridge Access Drive
 Proposed Vertical Bridge Access and Utility Easement
 Proposed Verizon Wireless Lease Area
 Proposed Verizon Wireless Equipment
-  Subject Property
 Approximate Parcel Boundary
-  N

Site Schematic

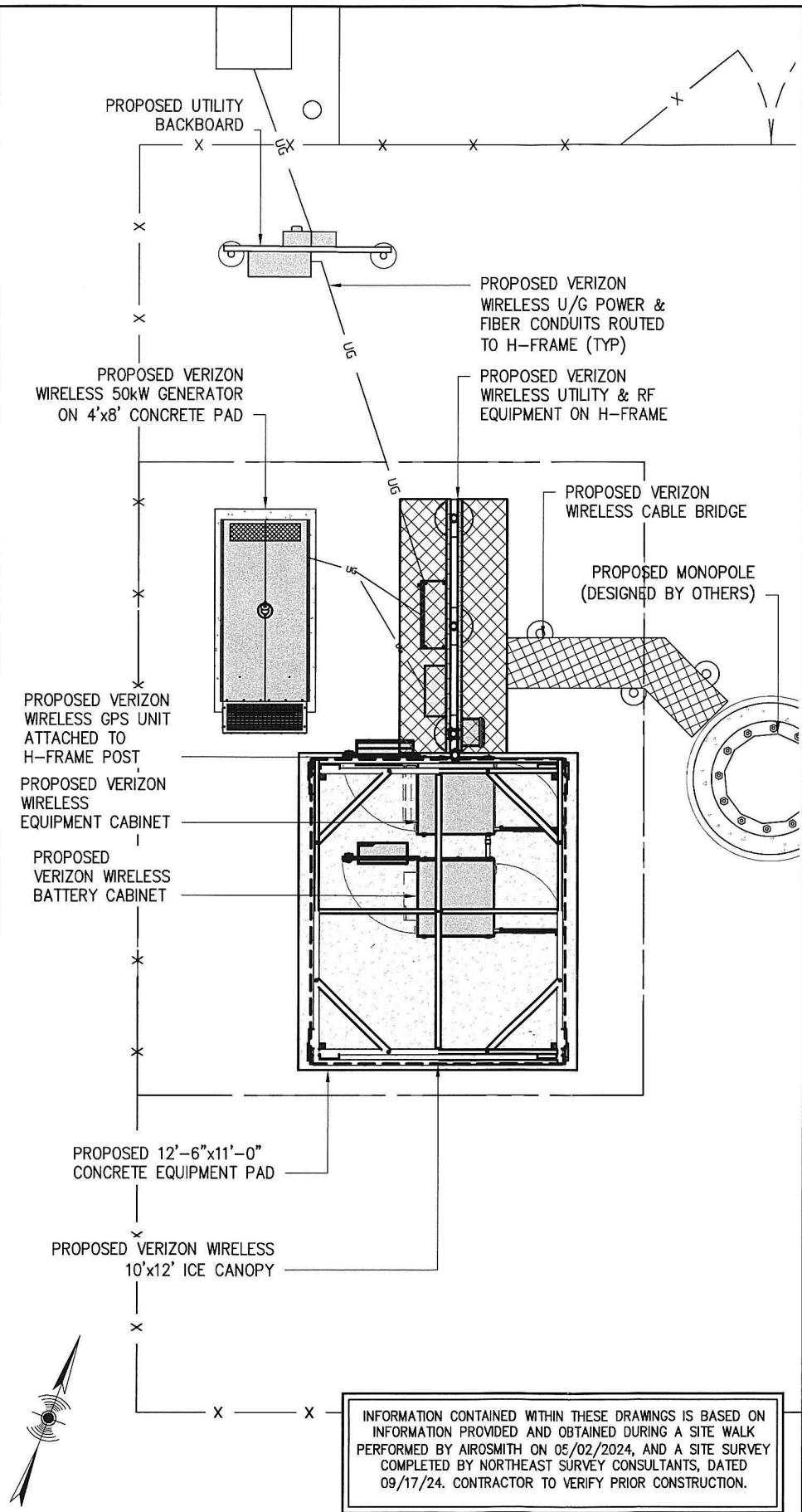
Proposed Wireless
Telecommunications Facility
Woodstock 2 CT
835 Route 169
Woodstock, Connecticut

Map Notes:
Base Map Source: 2019 Aerial Photograph (CTECO)
Map Scale: 1 inch = 300 feet
Map Date: October 2024





1 COMPOUND PLAN
SCALE: 1" = 10' (11"x17"), 1" = 5' (22"x34")



2 EQUIPMENT PLAN
SCALE: 1" = 6' (11"x17"), 1" = 3' (22"x34")

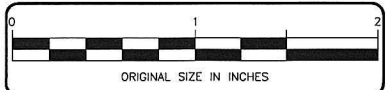
APPLICANT:
verticalbridge
THE TOWERS, LLC
750 PARK OF COMMERCE DRIVE, STE 200
BOCA RATON, FL 33487

CONSULTANT TEAM:
AIROSMITH
AIROSMITH DEVELOPMENT
AIROSMITH ENGINEERING
318 WEST AVE.
SARATOGA SPRINGS, NY 12866
CLUSTER #
VB NE NSB 1.0

CARRIER:
verizon
20 ALEXANDER DRIVE
WALLINGFORD, CT 06492

PROFESSIONAL STAMP:

DRAWINGS ISSUED FOR:				
REV.	DATE	DRAWN	DESCRIPTION	QA/QC
0	10/11/24	JLM	FOR PERMITTING	ASW

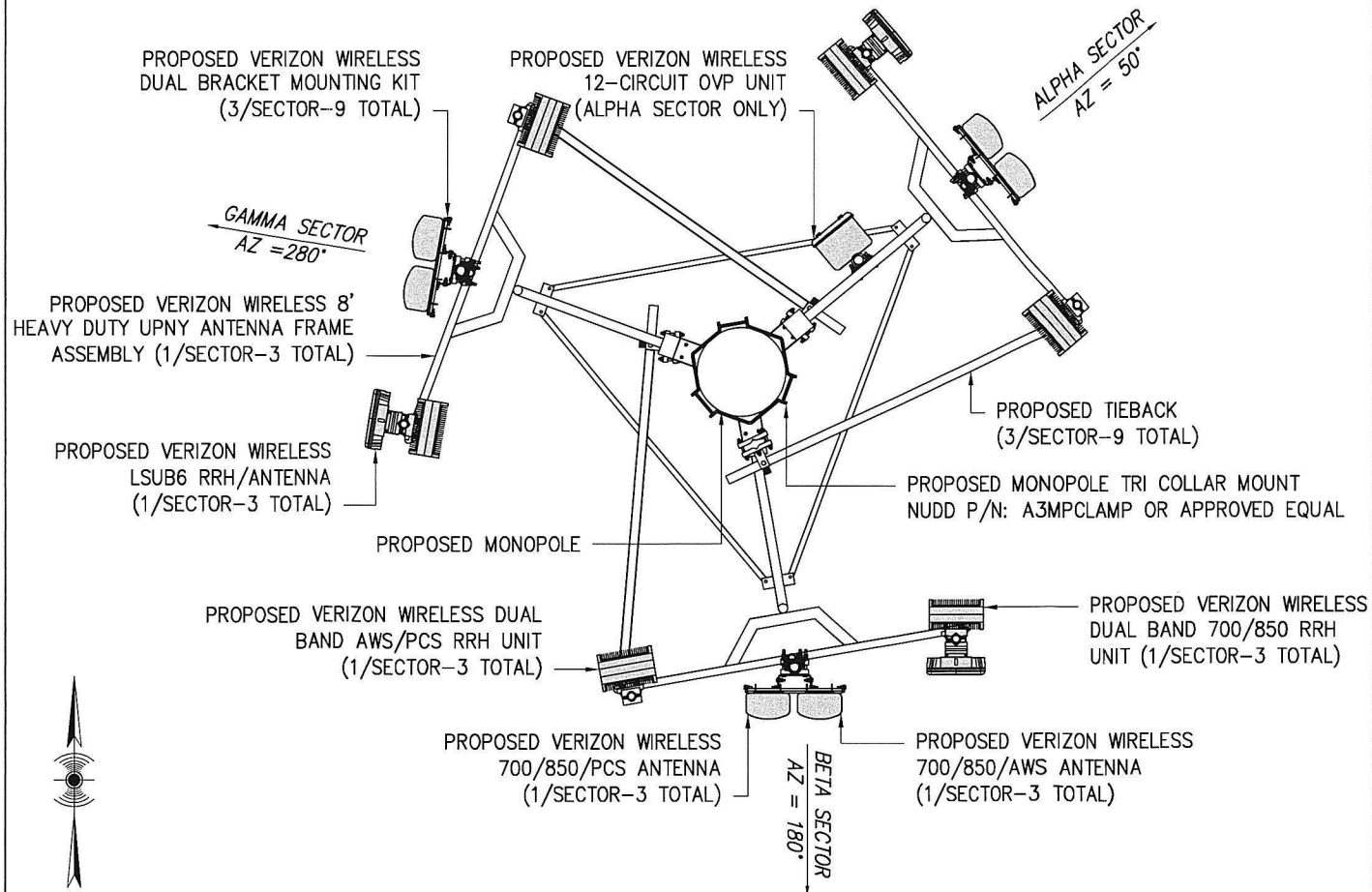
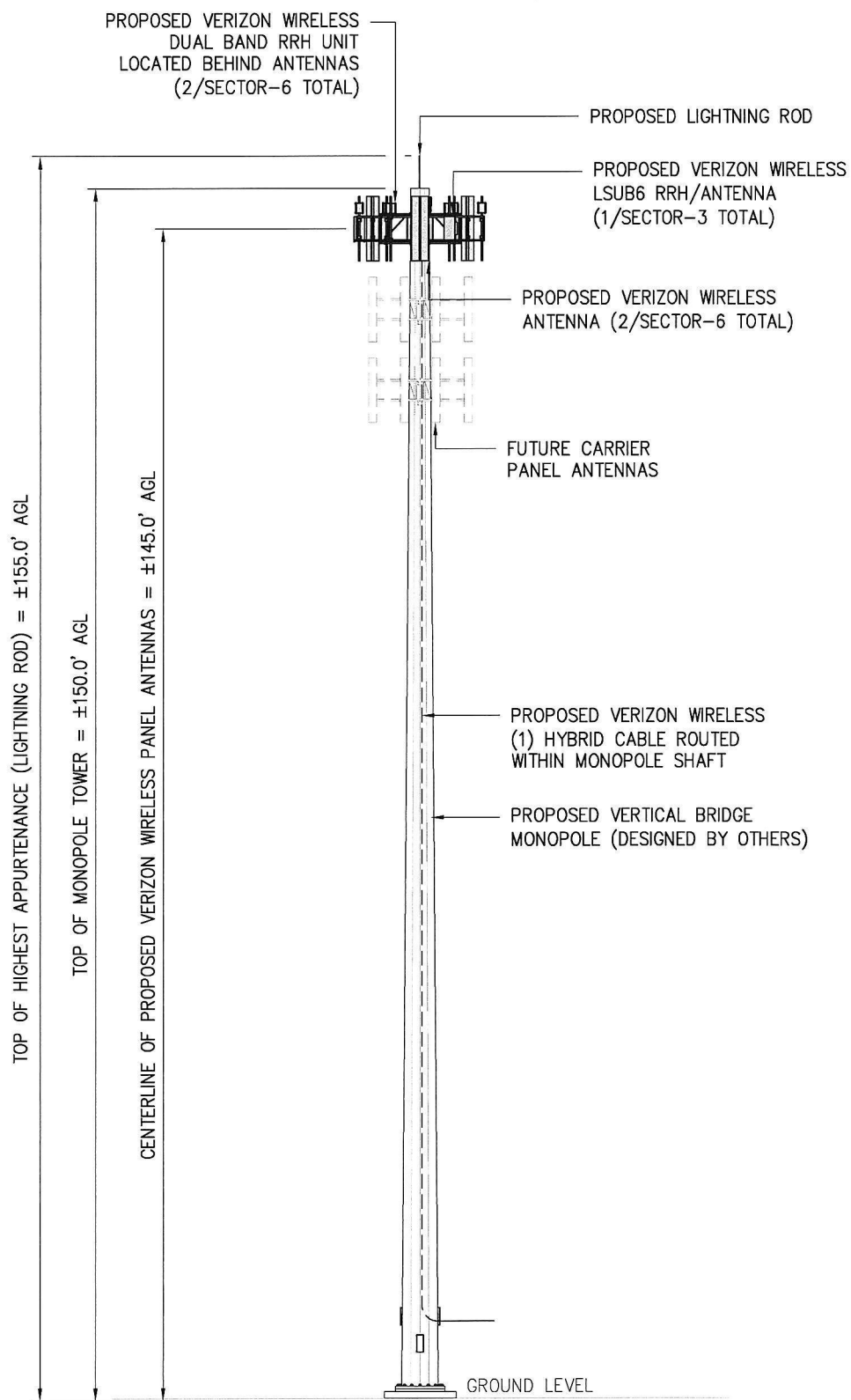


PROJECT INFORMATION:
SITE:
US-CT-5040
WOODSTOCK 2 CT
835 ROUTE 169
WOODSTOCK, CT 06281
WINDHAM COUNTY
MONOPOLE

SHEET TITLE:
COMPOUND &
EQUIPMENT PLANS

SHEET NUMBER:
Z-2
REVISION:
0

INFORMATION CONTAINED WITHIN THESE DRAWINGS IS BASED ON INFORMATION PROVIDED AND OBTAINED DURING A SITE WALK PERFORMED BY AIROSMITH ON 05/02/2024, AND A SITE SURVEY COMPLETED BY NORTHEAST SURVEY CONSULTANTS, DATED 09/17/24. CONTRACTOR TO VERIFY PRIOR CONSTRUCTION.



ANTENNA AND CABLE SCHEDULE								
SECTOR	STATUS	FREQUENCY	AZIMUTH (TRUE NORTH)	# OF ANTENNAS PER SECTOR	ANTENNA C HEIGHT (AGL)	COAXIAL CABLE	# OF CABLES	CABLE LENGTH
ALPHA	PROPOSED	700/850/AWS	50°	1	145'	JUMPERS FROM RRHS	12±	
ALPHA	PROPOSED	700/850/PCS	50°	1	145'	JUMPERS FROM RRHS	12±	
ALPHA	PROPOSED	C-BAND	50°	1	145'	POWER/FIBER CABLE FROM OVP	15±	
BETA	PROPOSED	700/850/AWS	180°	1	145'	JUMPERS FROM RRHS	12±	
BETA	PROPOSED	700/850/PCS	180°	1	145'	JUMPERS FROM RRHS	12±	
BETA	PROPOSED	C-BAND	180°	1	145'	POWER/FIBER CABLE FROM OVP	30±	
GAMMA	PROPOSED	700/850/AWS	280°	1	145'	JUMPERS FROM RRHS	12±	
GAMMA	PROPOSED	700/850/PCS	280°	1	145'	JUMPERS FROM RRHS	12±	
GAMMA	PROPOSED	C-BAND	280°	1	145'	POWER/FIBER CABLE FROM OVP	30±	
NOTE: CONTRACTOR TO TAG HYBRID CABLE & JUMPERS AT BOTH ENDS WITH ANTENNA DESIGNATION AS PER COLOR CODING SHEET PROVIDED BY VERIZON WIRELESS AND AS DIRECTED BY VERIZON WIRELESS EQUIPMENT ENGINEER.								

RRH/OVP AND HYBRID SCHEDULE						
SECTOR	STATUS	UNITS	# OF UNITS	CABLE TYPE	# OF CABLES	CABLE LENGTH
ALPHA	PROPOSED	6627 OVP	1	6x12 HYBRID CABLE	2	200'±
ALPHA	PROPOSED	700/850/RRH	1	POWER/FIBER CABLE FROM OVP	1	15'±
ALPHA	PROPOSED	AWS/PCS/RRH	1	POWER/FIBER CABLE FROM OVP	1	15'±
BETA	PROPOSED	700/850/RRH	1	POWER/FIBER CABLE FROM OVP	1	30'±
BETA	PROPOSED	AWS/PCS/RRH	1	POWER/FIBER CABLE FROM OVP	1	30'±
GAMMA	PROPOSED	700/850/RRH	1	POWER/FIBER CABLE FROM OVP	1	30'±
GAMMA	PROPOSED	AWS/PCS/RRH	1	POWER/FIBER CABLE FROM OVP	1	30'±

APPLICANT:

verticalbridge

THE TOWERS, LLC
750 PARK OF COMMERCE DRIVE, STE 200
BOCA RATON, FL 33487

CONSULTANT TEAM:

AIROSMITH

AIROSMITH DEVELOPMENT
AIROSMITH ENGINEERING

318 WEST AVE.
SARATOGA SPRINGS, NY 12866
CLUSTER #
VB NE NSB 1.0

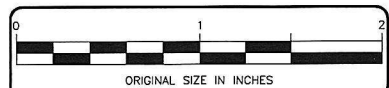
CARRIER:

verizon

20 ALEXANDER DRIVE
WALLINGFORD, CT 06492

PROFESSIONAL STAMP:

DRAWINGS ISSUED FOR:				
REV.	DATE	DRAWN	DESCRIPTION	QA/QC
0	10/11/24	JLM	FOR PERMITTING	ASW



PROJECT INFORMATION:

SITE:
US-CT-5040
WOODSTOCK 2 CT

835 ROUTE 169
WOODSTOCK, CT 06281
WINDHAM COUNTY

MONOPOLE

SHEET TITLE:

ELEVATION VIEW
AND ORIENTATION PLAN

SHEET NUMBER:

Z-3

REVISION:

0

1 ELEVATION VIEW

SCALE: 1" = 20' (11"x17"), 1" = 10' (22"x34")

2 VERIZON WIRELESS ANTENNA ORIENTATION PLAN

SCALE: 1" = 4' (11"x17"), 1" = 2' (22"x34")