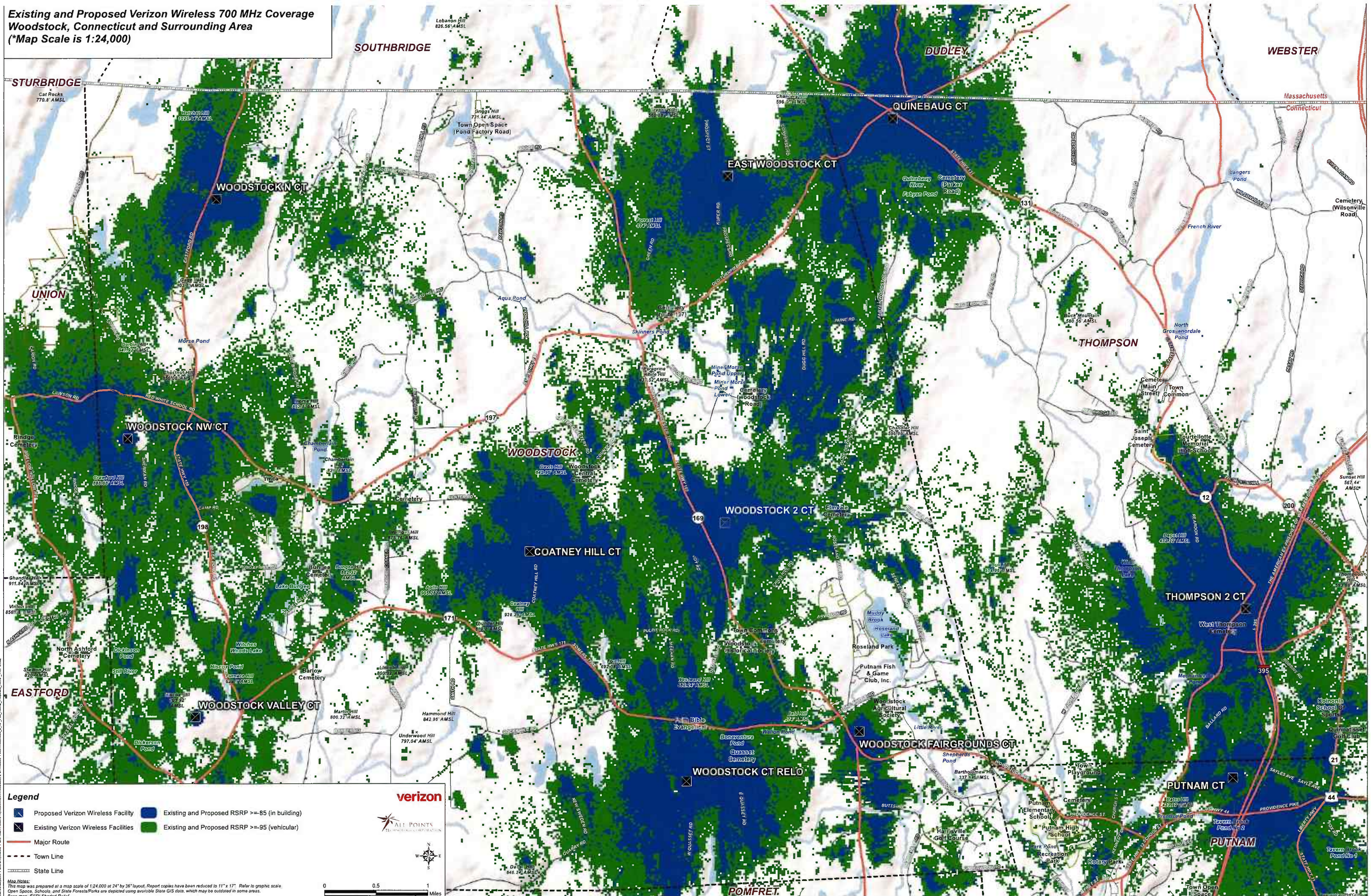


**Existing and Proposed Verizon Wireless 700 MHz Coverage
Woodstock, Connecticut and Surrounding Area
(*Map Scale is 1:24,000)**



Legend

- Proposed Verizon Wireless Facility
- Existing Verizon Wireless Facilities
- Existing and Proposed RSRP >= 85 (in building)
- Existing and Proposed RSRP >= 95 (vehicular)
- Major Route
- - - Town Line
- State Line

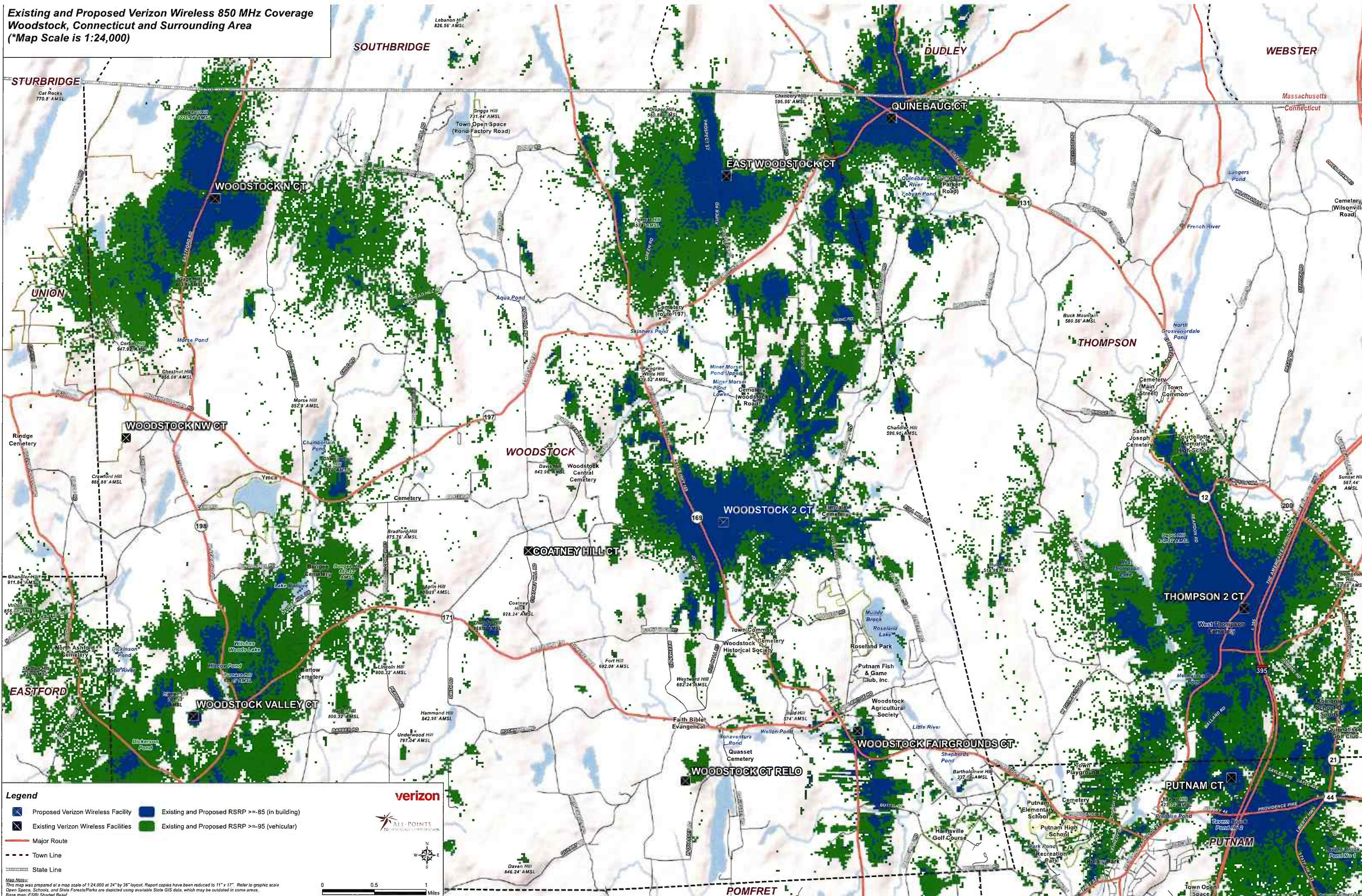
Map Notes:
This map was prepared at a map scale of 1:24,000 at 24" by 36" layout. Report copies have been reduced to 11" x 17". Refer to graphic scale. Open Space, Schools, and State Forests/Parks are depicted using available State GIS data, which may be outdated in some areas. Base map: ESRI Standard Relief.

verizon

ALL POINTS
SOLUTIONS CORPORATION

C:\Users\AP1\OneDrive\AP1 GIS Team\Files\GIS\Projects\Woodstock_2_Coverage\Woodstock_2_Coverage.aprx
 2/17/2016 10:15:15 AM
 2/17/2016 10:15:15 AM
 2/17/2016 10:15:15 AM

**Existing and Proposed Verizon Wireless 850 MHz Coverage
Woodstock, Connecticut and Surrounding Area
(*Map Scale is 1:24,000)**



- Legend**
- Proposed Verizon Wireless Facility
 - Existing Verizon Wireless Facilities
 - Existing and Proposed RSRP >= -85 (in building)
 - Existing and Proposed RSRP >= -95 (vehicular)
 - Major Route
 - - - Town Line
 - = State Line

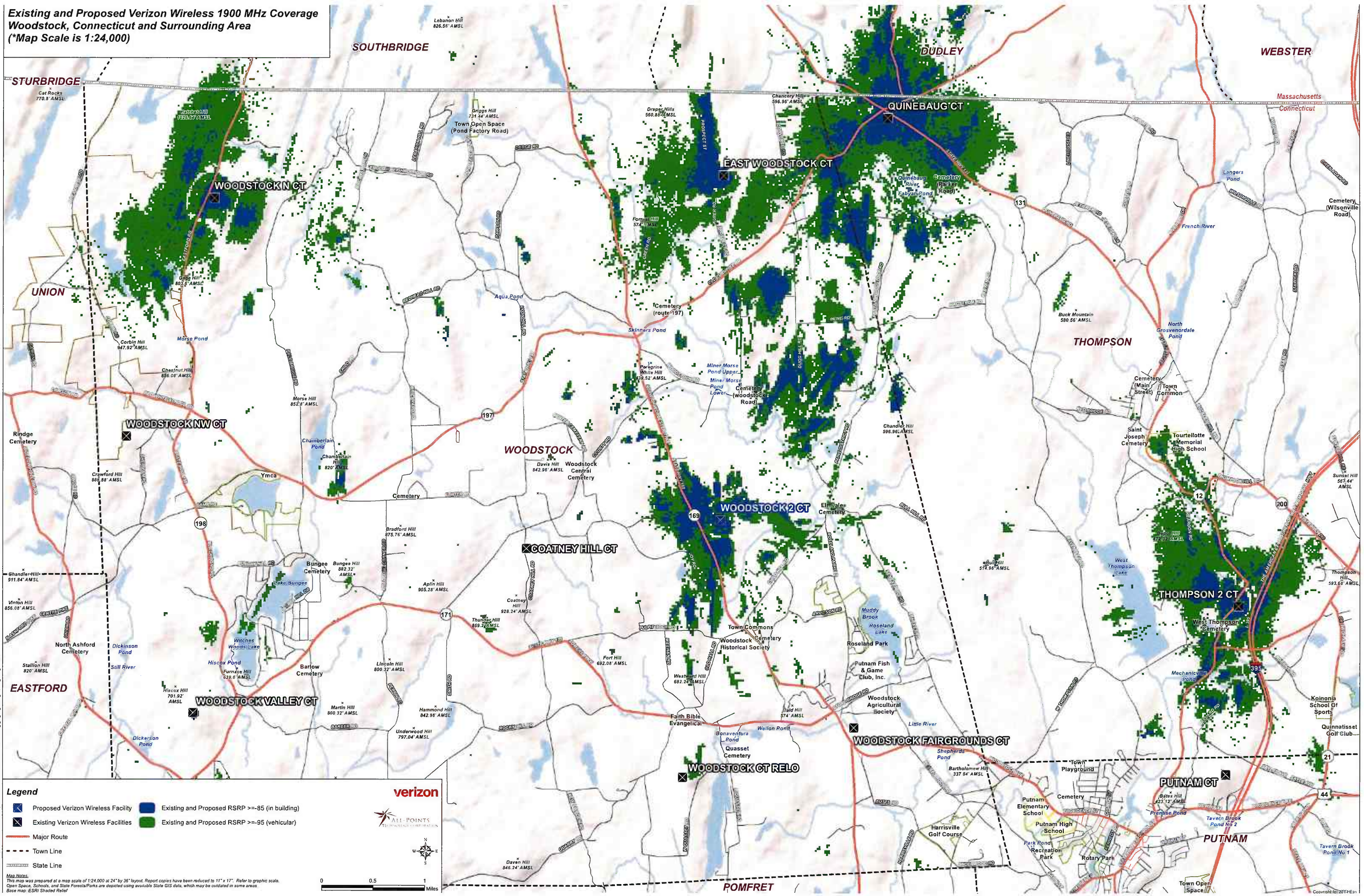
Map Notes:
This map was prepared at a map scale of 1:24,000 at 24" by 36" layout. Report copies have been reduced to 11" x 17". Refer to graphic scale.
Open Spaces, Schools, and State Forests/Parks are depicted using available State GIS data, which may be outdated in some areas.
Base map: ESRI Shaded Relief

verizon

ALL-POINTS
TEL. PROVIDENCE LINE 100-343-3433

0 0.5 1 Miles

**Existing and Proposed Verizon Wireless 1900 MHz Coverage
Woodstock, Connecticut and Surrounding Area
(*Map Scale is 1:24,000)**



Legend

- Proposed Verizon Wireless Facility
- Existing Verizon Wireless Facilities
- Major Route
- Town Line
- State Line
- Existing and Proposed RSRP >= -85 (in building)
- Existing and Proposed RSRP >= -95 (vehicular)

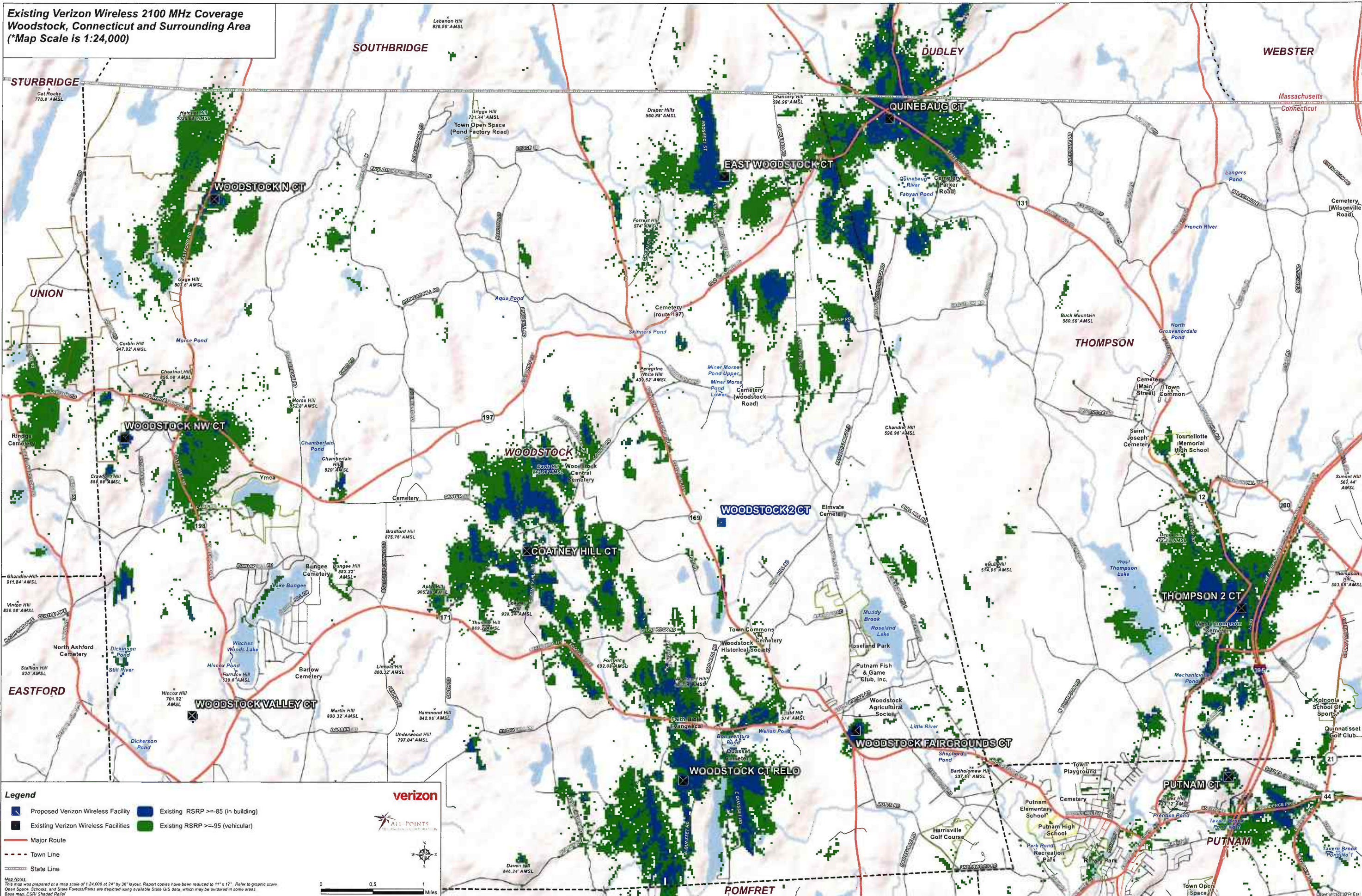
Map Notes:
This map was prepared at a map scale of 1:24,000 at 24" by 36" layout. Report copies have been reduced to 11" x 17". Refer to graphic scale.
Open Space, Schools, and State Forests/Parks are depicted using available State GIS data, which may be outdated in some areas.
Base map: ESRI Shaded Relief

verizon

ALL POINTS
727 PONDASSET COMMONS

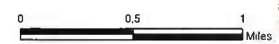
0 0.5 1 Miles

**Existing Verizon Wireless 2100 MHz Coverage
Woodstock, Connecticut and Surrounding Area
(*Map Scale is 1:24,000)**



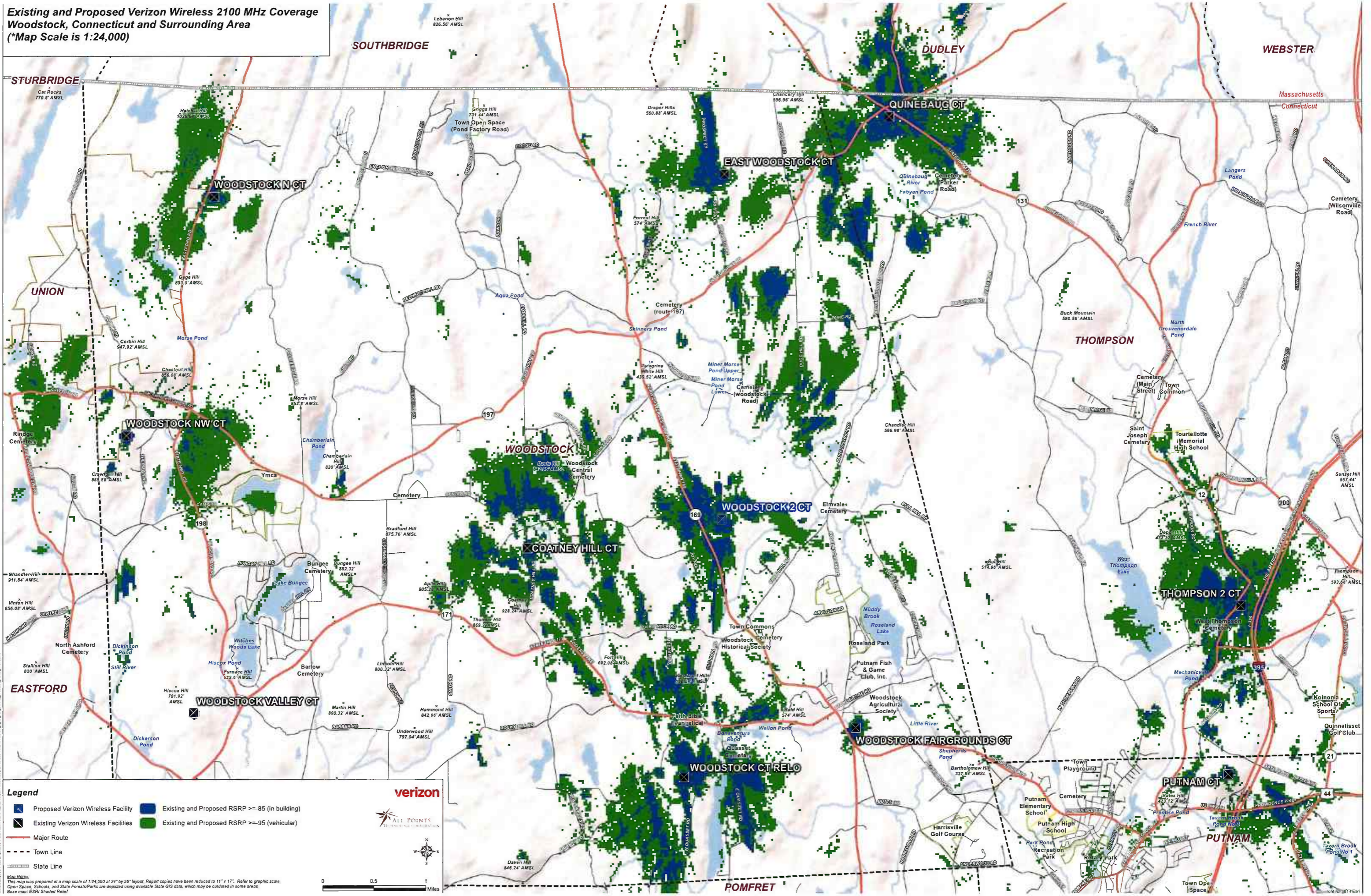
Legend

- Proposed Verizon Wireless Facility
- Existing Verizon Wireless Facilities
- Existing RSRP >= -85 (in building)
- Existing RSRP >= -95 (vehicular)
- Major Route
- - - Town Line
- - - - - State Line



Map Notes:
This map was prepared at a map scale of 1:24,000 at 24" by 36" layout. Report copies have been reduced to 11" x 17". Refer to graphic scale.
Open Space, Schools, and State Forests/Parks are depicted using available State GIS data, which may be outdated in some areas.
Base map: ESRI Shaded Relief

**Existing and Proposed Verizon Wireless 2100 MHz Coverage
Woodstock, Connecticut and Surrounding Area
(*Map Scale is 1:24,000)**



Legend

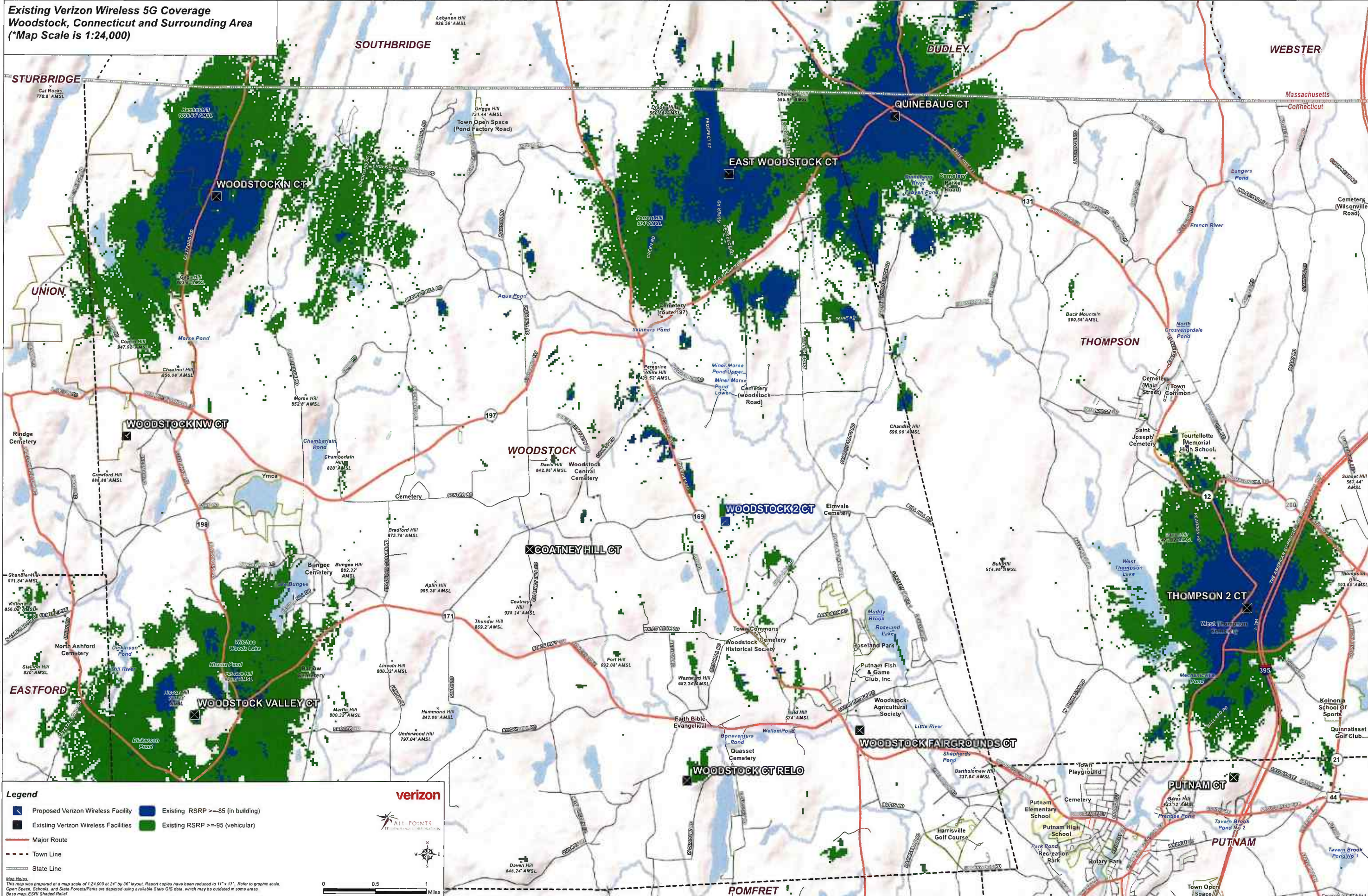
- Proposed Verizon Wireless Facility
- Existing and Proposed RSRP >= -85 (in building)
- Existing Verizon Wireless Facilities
- Existing and Proposed RSRP >= -95 (vehicular)
- Major Route
- - - Town Line
- = State Line

Map Notes:
This map was prepared at a map scale of 1:24,000 at 24" by 36" layout. Report copies have been reduced to 11" x 17". Refer to graphic scale. Open Space, Schools, and State Forests/Parks are depicted using available State GIS data, which may be outdated in some areas. Base map: ESRI Shaded Relief.

verizon
ALL POINTS
TECHNOLOGY CORPORATION

0 0.5 1 Miles

Existing Verizon Wireless 5G Coverage
Woodstock, Connecticut and Surrounding Area
 (*Map Scale is 1:24,000)



Legend

- Proposed Verizon Wireless Facility
- Existing RSRP >= -85 (in building)
- Existing Verizon Wireless Facilities
- Existing RSRP >= -95 (vehicular)
- Major Route
- - - Town Line
- - - State Line

Map Notes
 This map was prepared at a map scale of 1:24,000 at 24" by 36" layout. Report copies have been reduced to 11" x 17". Refer to graphic scale.
 Open Space, Schools, and State Forests/Parks are depicted using available State GIS data, which may be outdated in some areas.
 Base map: ESRI Shaded Relief

verizon

ALL POINTS
 TELECOMMUNICATIONS CORPORATION

0 0.5 1 Miles

C:\Users\jgallagher\Desktop\GIS\Projects\5G\Map\5G_Map_Producer\5G_Map_Producer.mxd, 2/14/2024 10:00 AM, 10/10/2024

