



PRELIMINARY HISTORIC RESOURCES EVALUATION

February 18, 2025

The Towers, LLC
750 Park of Commerce Drive, Suite 200
Boca Raton, FL 33487

Re: Proposed Telecommunications Facility
835 Route 169, Woodstock, Connecticut

On behalf of The Towers, LLC ("The Towers"), All-Points Technology Corporation, P.C. ("APT") performed an evaluation of the potential effects on historic resources associated with the proposed development of a wireless telecommunications Facility at the reference Project Site. The Facility would include a 150-foot tall, steel monopole.

APT completed an independent review of the National Register of Historic Places ("NRHP") and the State Historic Preservation Office ("SHPO") files to determine if any listed sites, or sites eligible for listing, are located proximate to the Project Site. The results of our review revealed that no NRHP resources are located within one-half mile (the Area of Potential Effect¹) of the Project Site. One resource listed on the NRHP is located approximately 0.8-mile to the south, outside the Area of Potential Effect: the Woodstock Hill Historic District. A cultural resource screening map is provided as an attachment to this memorandum.

As part of its obligations for compliance with the National Environmental Policy Act ("NEPA"), The Towers will be submitting required documentation to the State Historic Preservation Office ("SHPO") for this agency's review and determination. The SHPO submission will be prepared by a qualified architectural historian who meets criteria developed by the Secretary of the Interior.

The SHPO will provide its determination with respect to potential effects to historic resources in a formal response to The Towers.

Sincerely,

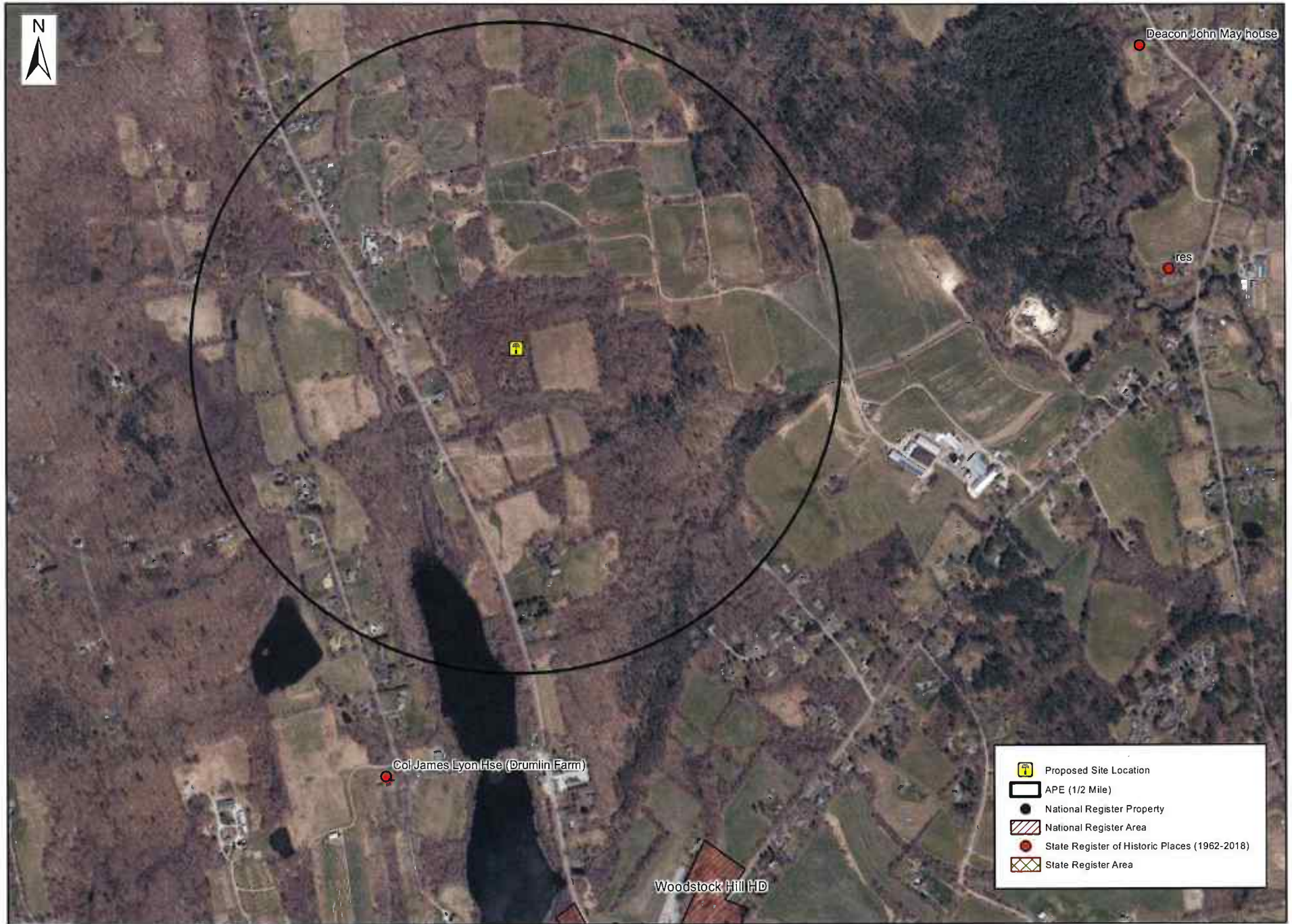
A handwritten signature in cursive script that reads "Michael Libertine".

Michael Libertine
Project Manager

Attachment

¹ For towers under 200 feet tall, the Area of Potential Effect ("APE") has been established at 0.5 mile. This distance represents the APE established cooperatively by the Federal Communications Commission, Advisory Council on Historic Preservation and the National Conference of State Historic Preservation Officers.

Cultural Resource Screening Map



Cultural Resources Screen

CT754200 Woodstock 2 835 Route 169, Woodstock, CT

February 17 2025 \ USGS QUAD: Woodstock

