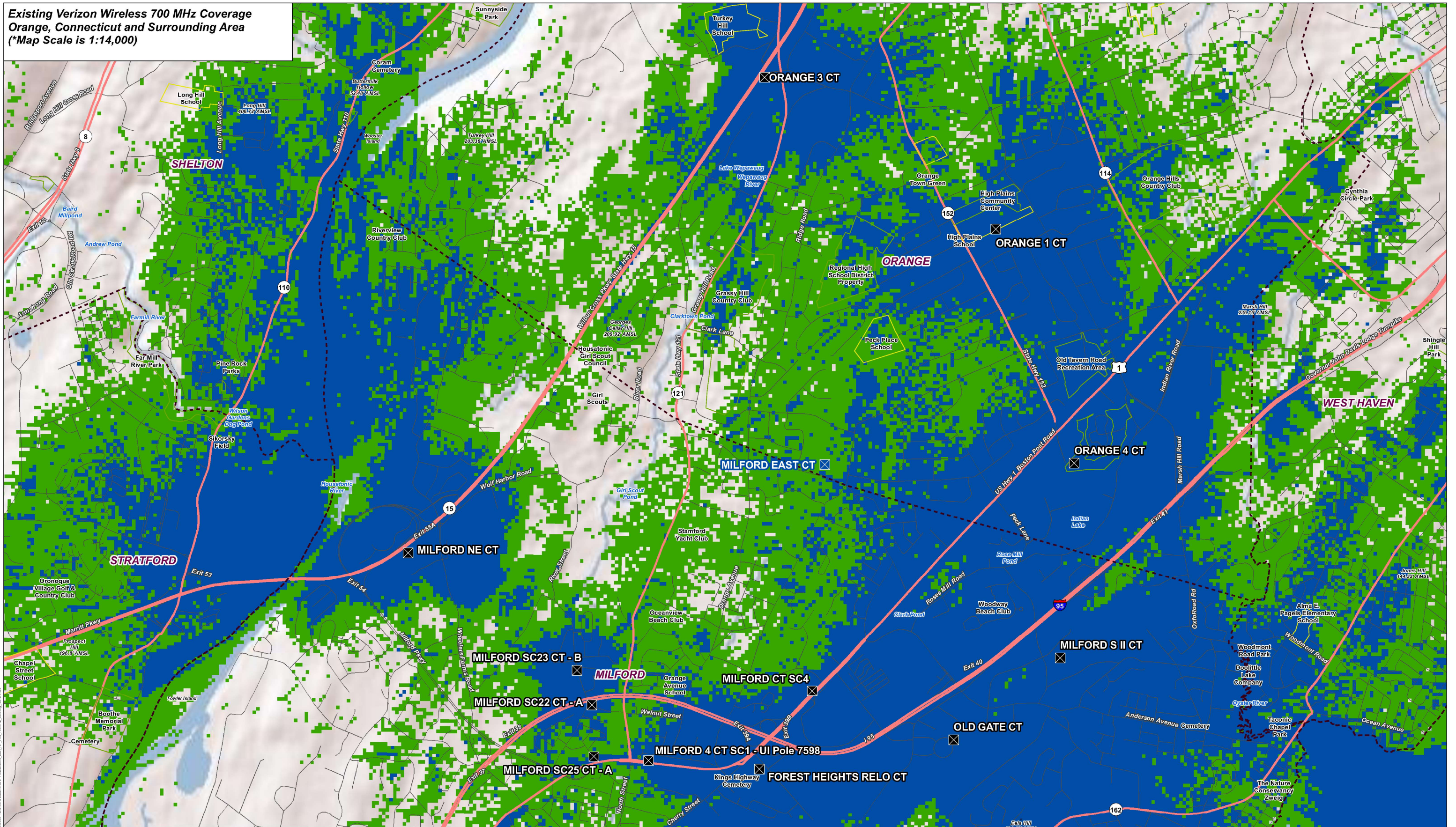


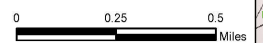
**Existing Verizon Wireless 700 MHz Coverage
Orange, Connecticut and Surrounding Area
(*Map Scale is 1:14,000)**



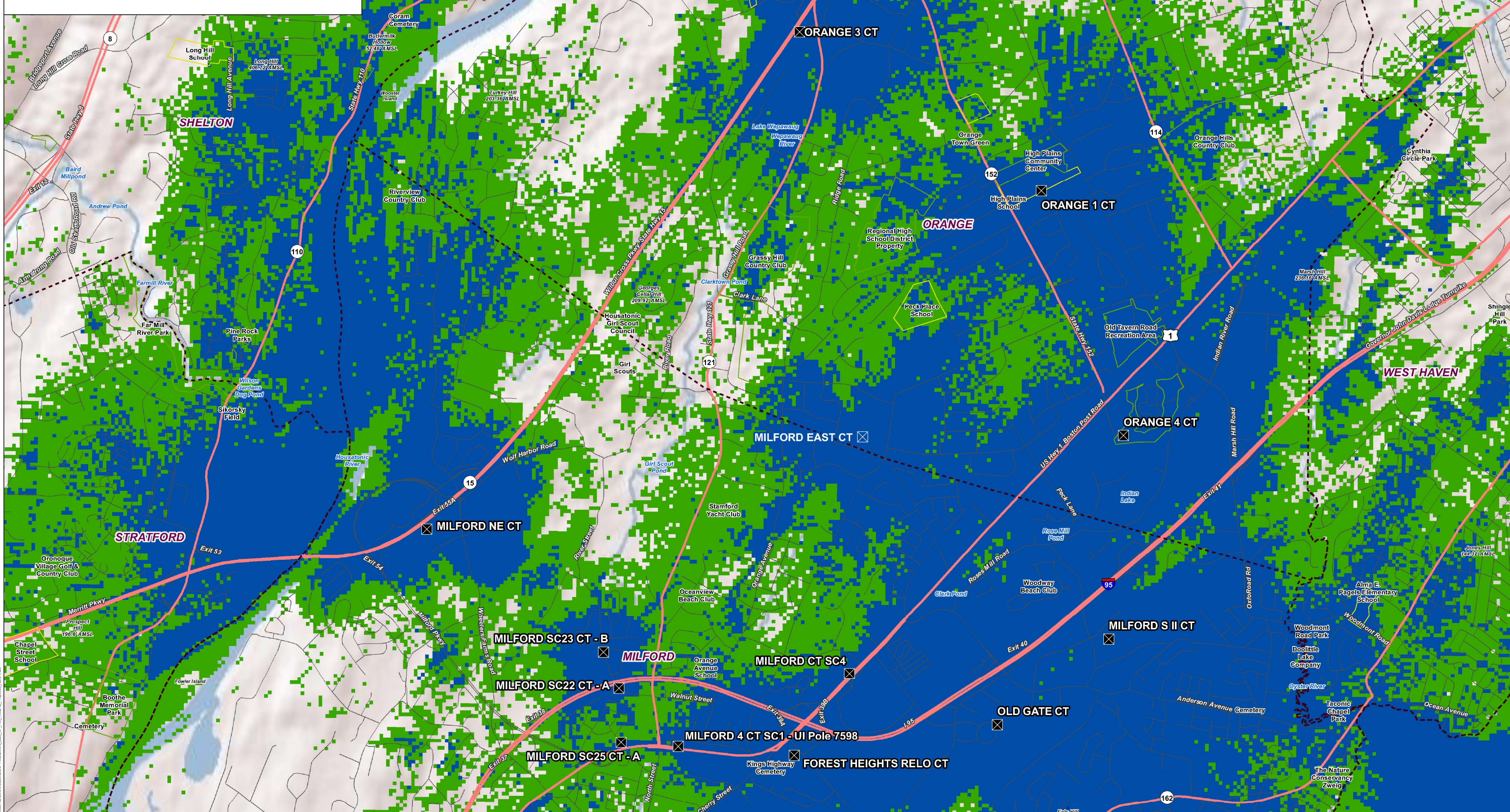
- Legend**
- Proposed Verizon Wireless Facility
 - Existing RSRP >=85 (in building)
 - Existing Verizon Wireless Facilities
 - Existing RSRP >=95 (vehicular)
 - Major Route
 - - - Town Line



Map Notes:
This map was prepared at a map scale of 1:14,000 at 24" by 36" layout. Report copies have been reduced to 11" x 17". Refer to graphic scale.
Open Spaces, Schools, and State Forests/Parks are depicted using available State GIS data, which may be outdated in some areas.
Base map: ESRI Shaded Relief



**Existing and Proposed Verizon Wireless 700 MHz Coverage
Orange, Connecticut and Surrounding Area
(*Map Scale is 1:14,000)**



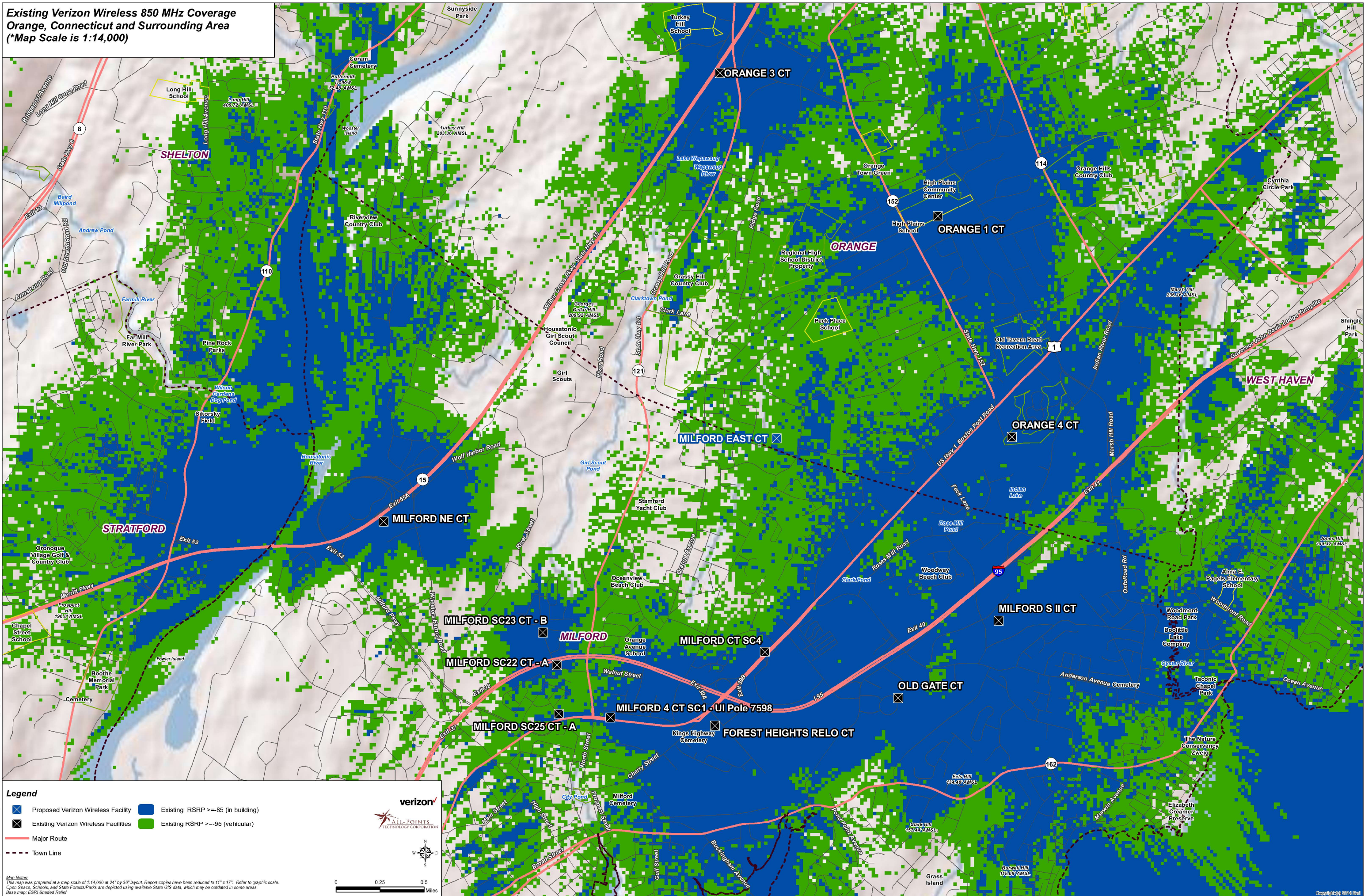
Legend

- Proposed Verizon Wireless Facility
- Existing Verizon Wireless Facilities
- Major Route
- - - Town Line
- Existing and Proposed RSRP >= -85 (in building)
- Existing and Proposed RSRP >= -95 (vehicular)

Map Notes:
 This map was prepared at a map scale of 1:14,000 at 24" by 36" layout. Report copies have been reduced to 11" x 17". Refer to graphic scale.
 Open Spaces, Schools, and State Forests/Parks are depicted using available State GIS data, which may be outdated in some areas.
 Base map: ESRI Shaded Relief

verizon
 ALL-POINTS
 TECHNOLOGY CORPORATION

**Existing Verizon Wireless 850 MHz Coverage
Orange, Connecticut and Surrounding Area
(*Map Scale is 1:14,000)**

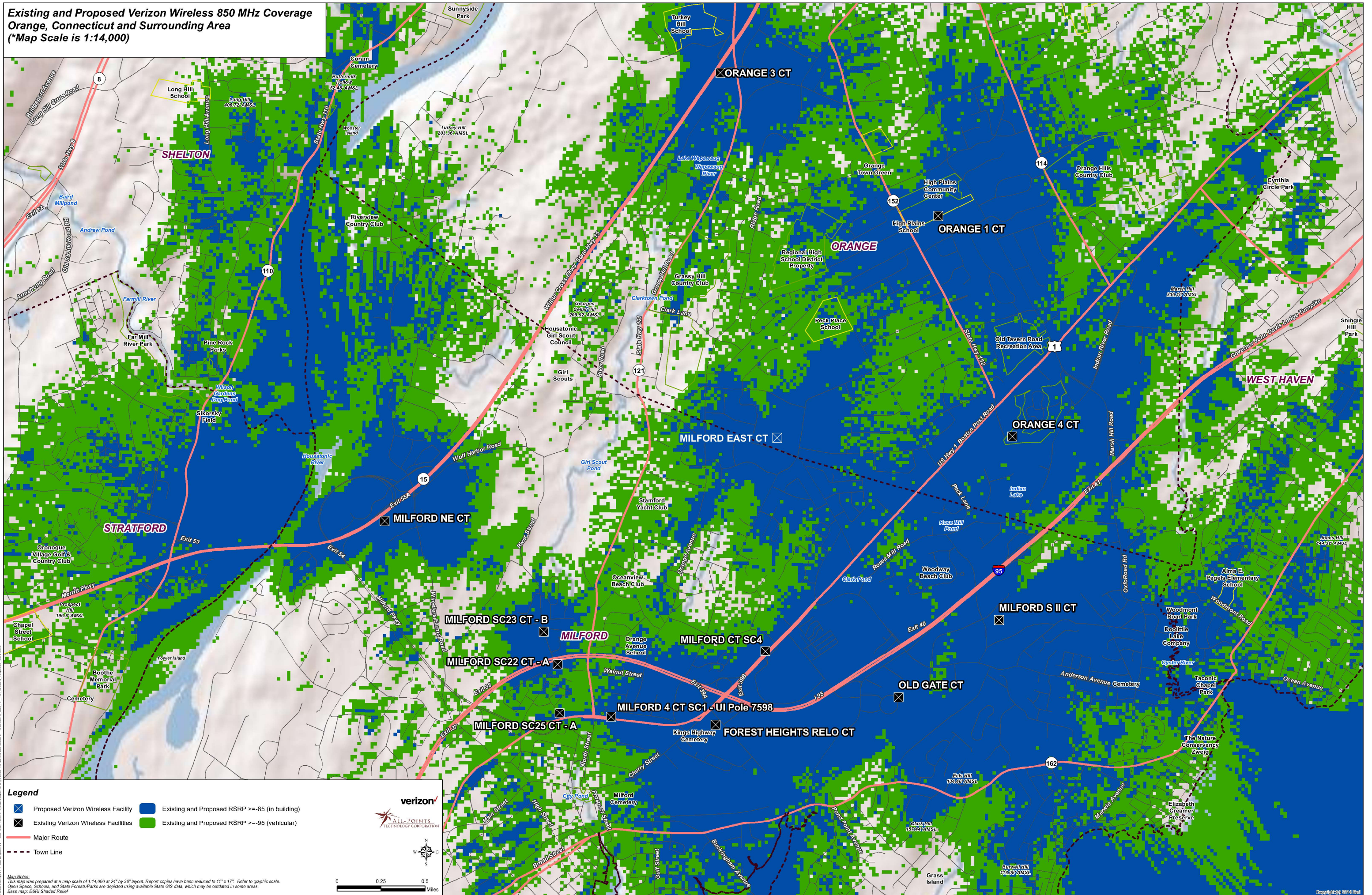


- Legend**
- X Proposed Verizon Wireless Facility
 - X Existing Verizon Wireless Facilities
 - Major Route
 - - - Town Line
 - Existing RSRP >=85 (in building)
 - Existing RSRP >=95 (vehicular)

Map Notes:
This map was prepared at a map scale of 1:14,000 at 24" by 36" layout. Report copies have been reduced to 11" x 17". Refer to graphic scale.
Open Spaces, Schools, and State Forests/Parks are depicted using available State GIS data, which may be outdated in some areas.
Base map: ESRI Shaded Relief

verizon
ALL-POINTS
TECHNOLOGY CORPORATION

**Existing and Proposed Verizon Wireless 850 MHz Coverage
Orange, Connecticut and Surrounding Area
(*Map Scale is 1:14,000)**



Legend

- Proposed Verizon Wireless Facility
- Existing and Proposed RSRP >= -85 (in building)
- Existing Verizon Wireless Facilities
- Existing and Proposed RSRP >= -95 (vehicular)
- Major Route
- - - Town Line

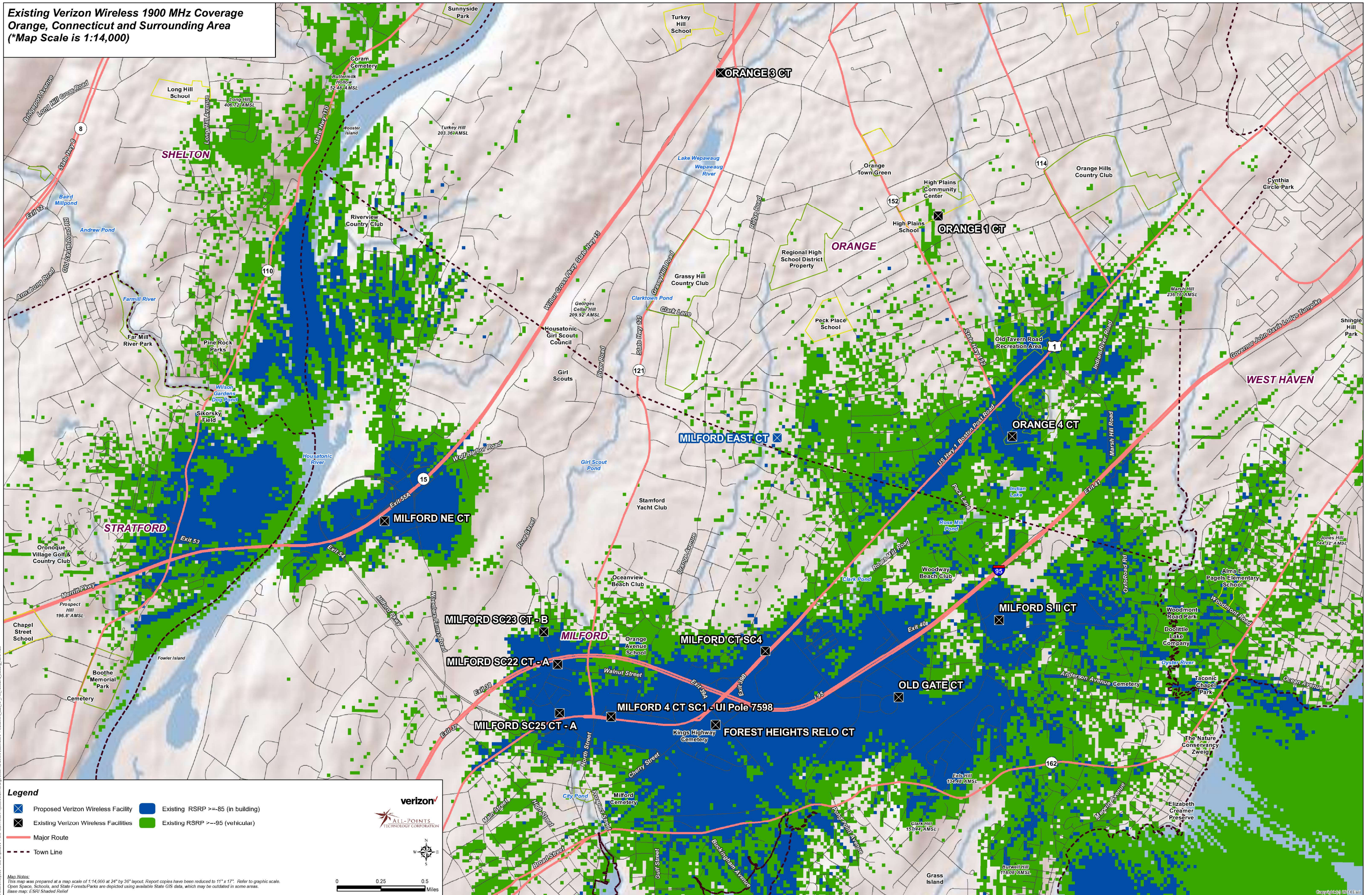
Map Notes:
 This map was prepared at a map scale of 1:14,000 at 24" by 36" layout. Report copies have been reduced to 11" x 17". Refer to graphic scale.
 Open Spaces, Schools, and State Forests/Parks are depicted using available State GIS data, which may be outdated in some areas.
 Base map: ESRI Shaded Relief

Scale: 0 0.25 0.5 Miles

Logos: Verizon, ALL-POINTS TECHNOLOGY CORPORATION

© 2014 Verizon Wireless. All rights reserved. This map is a service mark of Verizon Wireless. All other marks are the property of their respective owners.

**Existing Verizon Wireless 1900 MHz Coverage
Orange, Connecticut and Surrounding Area
(*Map Scale is 1:14,000)**



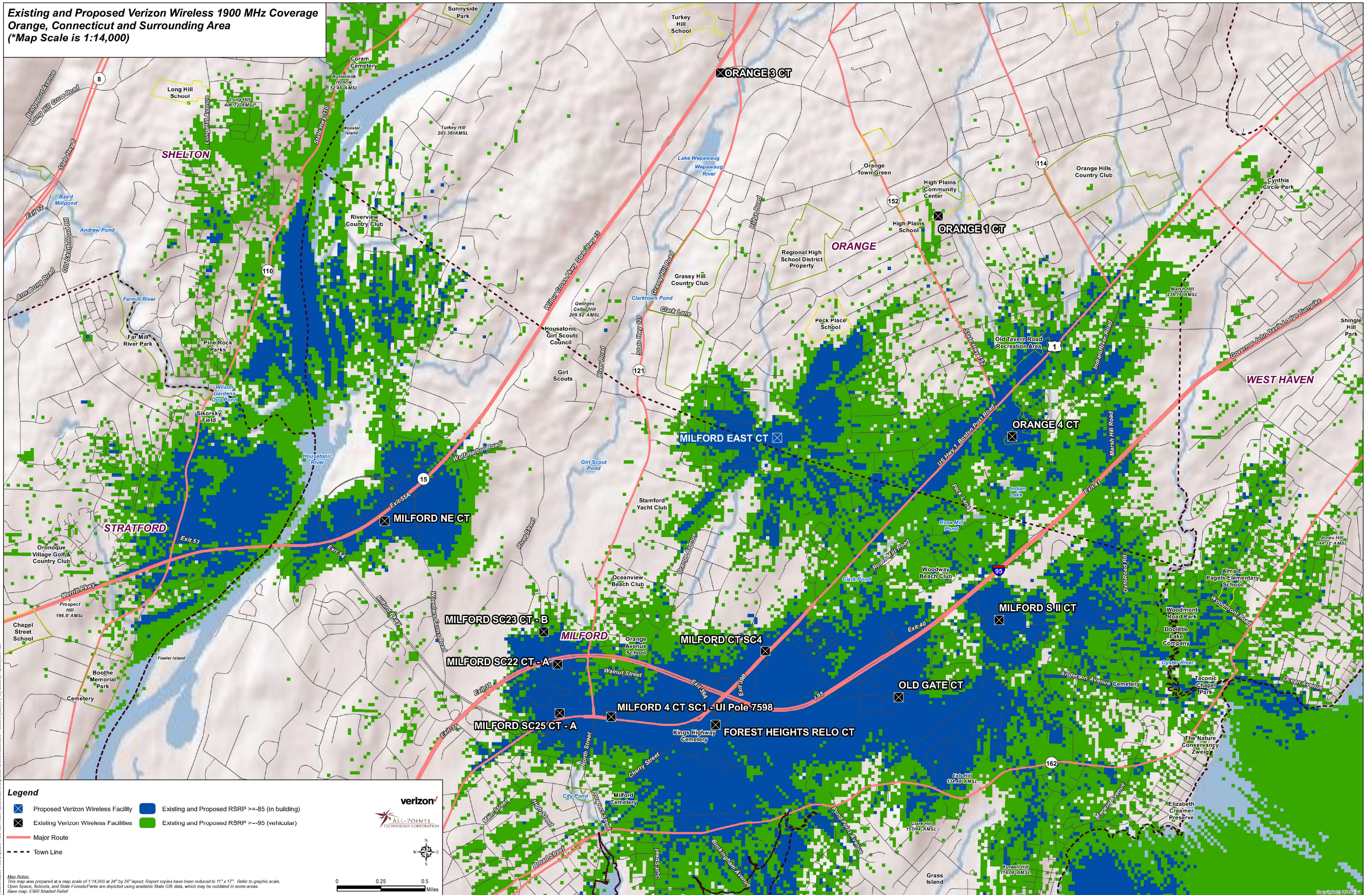
Legend

- Proposed Verizon Wireless Facility
- Existing Verizon Wireless Facilities
- Major Route
- Town Line
- Existing RSRP >=85 (in building)
- Existing RSRP >=95 (vehicular)

Map Notes:
This map was prepared at a map scale of 1:14,000 at 24" by 36" layout. Report copies have been reduced to 11" x 17". Refer to graphic scale.
Open Spaces, Schools, and State Forests/Parks are depicted using available State GIS data, which may be outdated in some areas.
Base map: ESRI Shaded Relief

Verizon
ALL-POINTS
TECHNOLOGY CORPORATION

Existing and Proposed Verizon Wireless 1900 MHz Coverage
Orange, Connecticut and Surrounding Area
 (*Map Scale is 1:14,000)



Legend

- Proposed Verizon Wireless Facility
- Existing and Proposed RSRP >=-85 (in building)
- Existing Verizon Wireless Facilities
- Existing and Proposed RSRP >=-95 (vehicular)
- Major Route
- - - Town Line

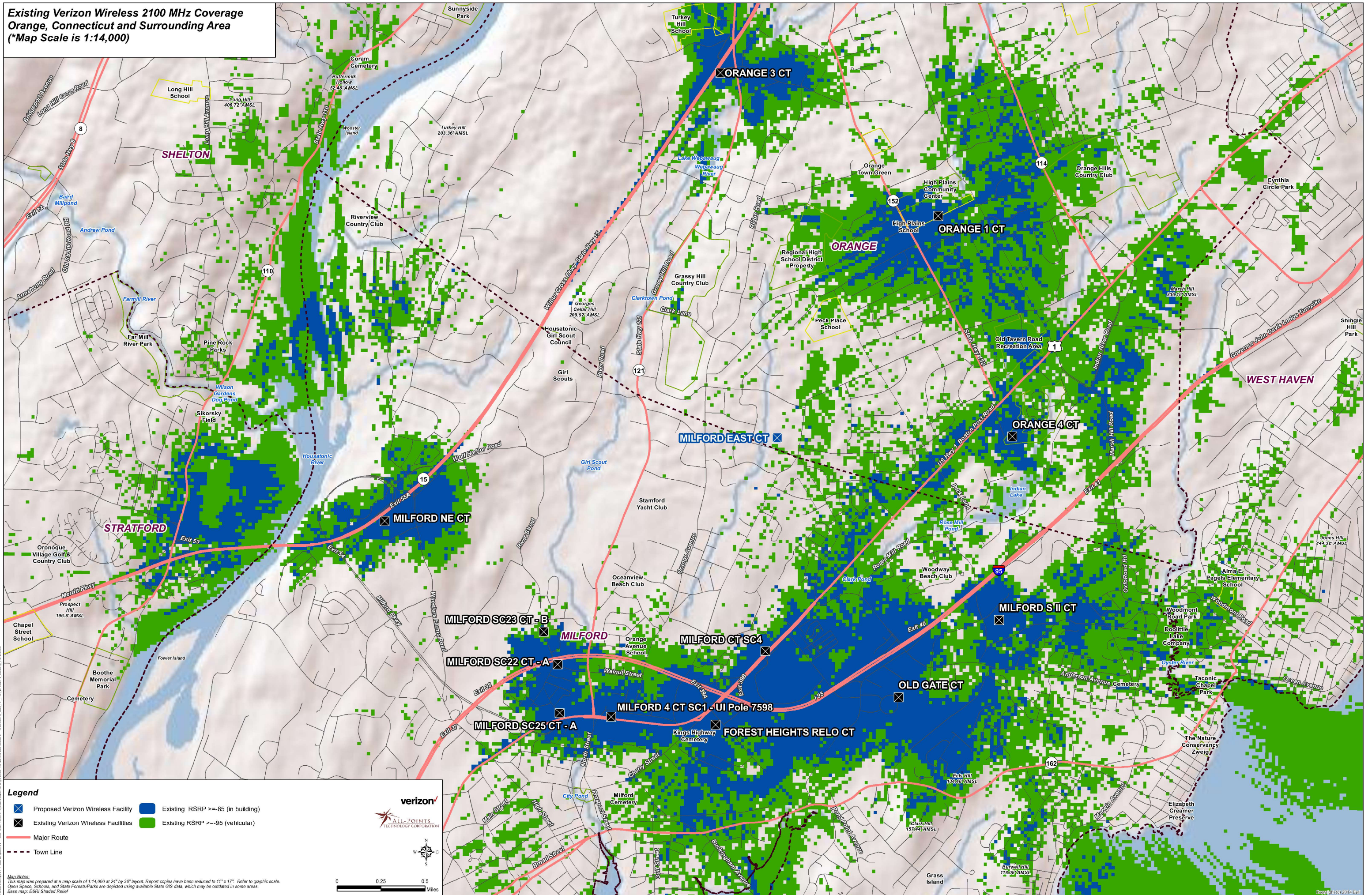
Map Notes:
 This map was prepared at a map scale of 1:14,000 at 24" by 36" layout. Report copies have been reduced to 11" x 17". Refer to graphic scale.
 Open Spaces, Schools, and State Forests/Parks are depicted using available State GIS data, which may be outdated in some areas.
 Base map: ESRI Shaded Relief

Scale: 0 0.25 0.5 Miles

Logos: Verizon, ALL-POINTS TECHNOLOGY CORPORATION

C:\Users\jgallagher\Desktop\1900MHz\1900MHz_Orange_Shelton_Stratford_WestHaven.ctb, P:_Data\1900MHz\1900MHz_Orange_Shelton_Stratford_WestHaven.ctb

**Existing Verizon Wireless 2100 MHz Coverage
Orange, Connecticut and Surrounding Area
(*Map Scale is 1:14,000)**



Legend

- Proposed Verizon Wireless Facility
- Existing Verizon Wireless Facilities
- Major Route
- Town Line
- Existing RSRP >= -85 (in building)
- Existing RSRP > -95 (vehicular)

Map Notes:
This map was prepared at a map scale of 1:14,000 at 24" by 36" layout. Report copies have been reduced to 11" x 17". Refer to graphic scale.
Open Spaces, Schools, and State Forests/Parks are depicted using available State GIS data, which may be outdated in some areas.
Base map: ESRI Shaded Relief

Scale: 0 0.25 0.5 Miles

Verizon ALL-POINTS TECHNOLOGY CORPORATION

