



**PRELIMINARY HISTORIC
RESOURCES DETERMINATION**

January 22, 2024

**Verizon Wireless
20 Alexander Drive
Wallingford, Connecticut 06492**

**Re: Proposed Telecommunications Facility
425 Old Tavern Road
Orange, Connecticut**

On behalf of Verizon Wireless, All-Points Technology Corporation, P.C. ("APT") performed a desktop evaluation of the potential effects on historic/cultural resources associated with the proposed development of a wireless telecommunications facility ("Facility") at the referenced project site. The Facility would include a 120-foot tall, steel monopole.

APT completed an independent review of the National Register of Historic Places ("NRHP") and SHPO files to determine if any listed sites, or sites eligible for listing, are located proximate to the Site. The results of our review revealed that no such resources are located within one-half mile of the site.¹ A cultural resource screening map is provided as an attachment to this memorandum.

As part of its obligations for compliance with the National Environmental Policy Act ("NEPA"), Verizon Wireless will be submitting required documentation to the State Historic Preservation Office ("SHPO") for this agency's review and determination. The SHPO submission will be prepared by a qualified architectural historian that meets criteria developed by the Secretary of the Interior. That process has not yet been initiated.

Based on our research of publicly-available information, it is APT's opinion that the proposed Facility is not likely to have an effect on historic or cultural resources in the area.

Sincerely,

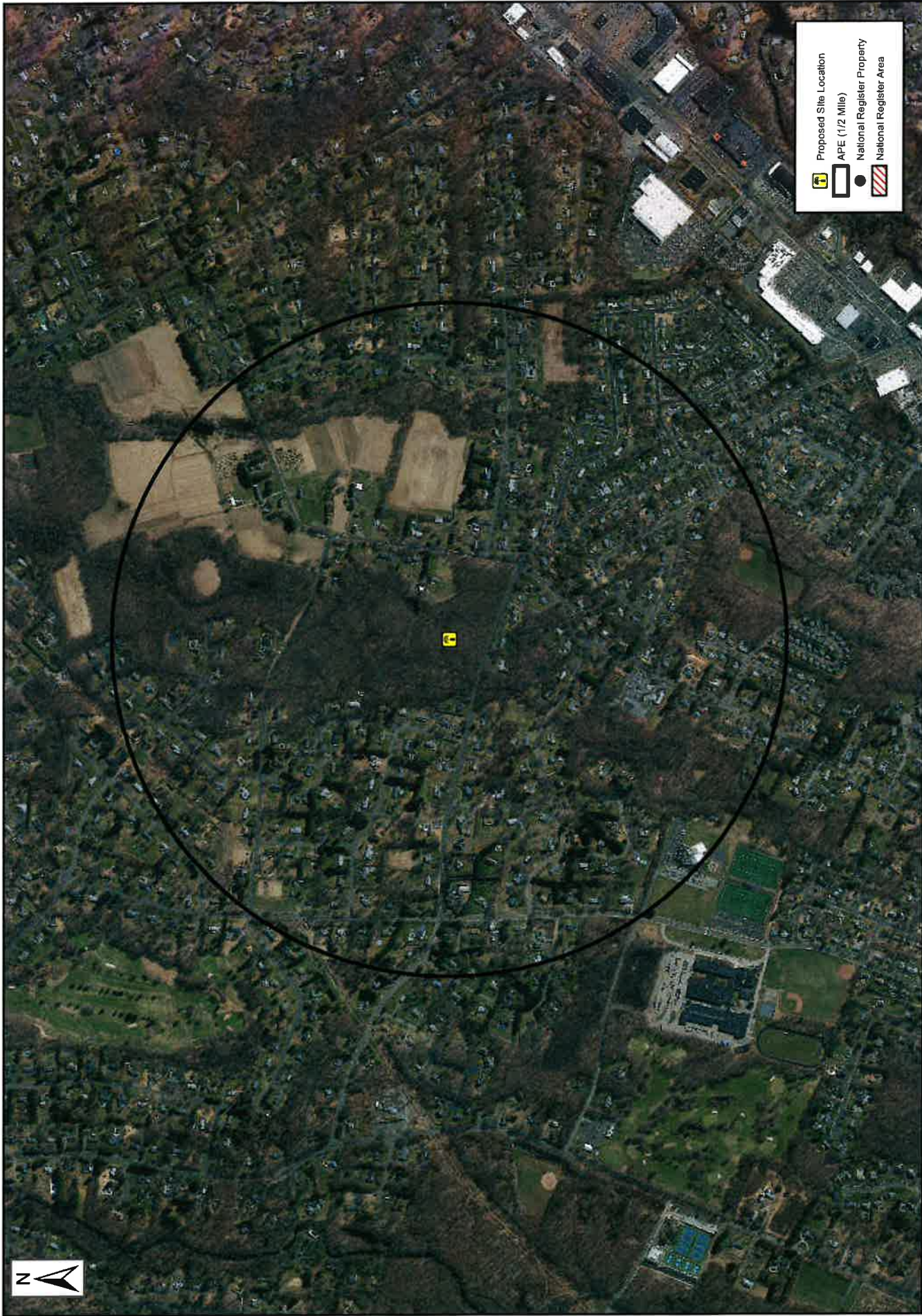
A handwritten signature in black ink that reads "Brian Gaudet". The signature is written in a cursive style with a large, sweeping initial "B".

Brian Gaudet
Project Manager

Attachment

¹ For towers under 200 feet tall, the Area of Potential Effect ("APE") has been established at 0.5 mile. This distance represents the APE established cooperatively by the Federal Communications Commission, Advisory Council on Historic Preservation and the National Conference of State Historic Preservation Officers.

Cultural Resource Screening Map



Cultural Resources Screen

CT1416440 - VZ Orange South 425 Old Tavern Road Orange, CT

January 18 2024 \ USGS QUAD:

Prepared for All-Points Technology Corp. by Heritage Consultants, 2024