

**Cellco Partnership d/b/a Verizon Wireless
1021-1041 South Main Street
Cheshire, Connecticut**

Cheshire DT Facility

Site Search Summary

Section 16-50j-74(j) of the Regulations of Connecticut State Agencies requires the submission of a statement that describes “the narrowing process by which other possible sites were considered and eliminated.” In accordance with this requirement, descriptions of the general site search process, the identification of the applicable search area and the alternative locations considered for development of the proposed Cheshire DT Facility are provided below.

Site Search Process

To initiate its site selection process in an area where wireless service problems have been identified, Cellco first establishes a “site search ring” or “site search area”. In any search ring or search area, Cellco seeks to avoid the unnecessary proliferation of towers and to reduce the potential adverse environmental effects of the cell site, while at the same time maximizing the quality of service provided from a facility. These objectives are achieved by initially locating existing towers and other sufficiently tall structures within and near the site search area. If any are found, they are evaluated to determine whether they can support Cellco’s telecommunications antennas and related equipment at a location and elevation that satisfies its technical requirements.

The list of available locations may be further reduced if, after preliminary discussions, the property owners withdraw a site from consideration. From among the remaining locations, the proposed sites are selected by eliminating those that have greater potential for adverse environmental effects and fewer benefits to the public (i.e., those requiring taller towers; those with substantial adverse environmental impacts, or in densely populated residential areas; and those with limited ability to share space with other public or private telecommunications service providers). It should be noted that in any given site search, the weight afforded to factors considered in the selection process will vary depending upon the availability and nature of sites within the search area.

Need for the Facility

The Cheshire DT Facility will provide significant capacity relief to Cellco’s Cheshire Facility (Beta sector antennas) which currently provide service to the area around the Property.

Within approximately three (3) miles of the proposed Cheshire DT Facility, Cellco maintains five (5) macro-cell and two (2) small cell facilities. The locations of these existing facilities are included on the attached Site Vicinity Map and Coverage Maps included in

Attachment 6 of the Application.

Cellco's Cheshire macro-cell facility consists of antennas on a tower at 751 Higgins Road in Cheshire. Cellco's Cheshire NE macro-cell facility consists of antennas on a tower at 500 Highland Avenue in Cheshire. Cellco's Cheshire East macro-cell facility consists of antennas on the tower at 185 Academy Road in Cheshire. Cellco's Hamden North 2 macro-cell facility consists of antennas on the tower at 150 Willow Street in Hamden. Cellco's Oakdale macro-cell facility consists of antennas on a tower at 60 Gaylord Farm Road in Wallingford.

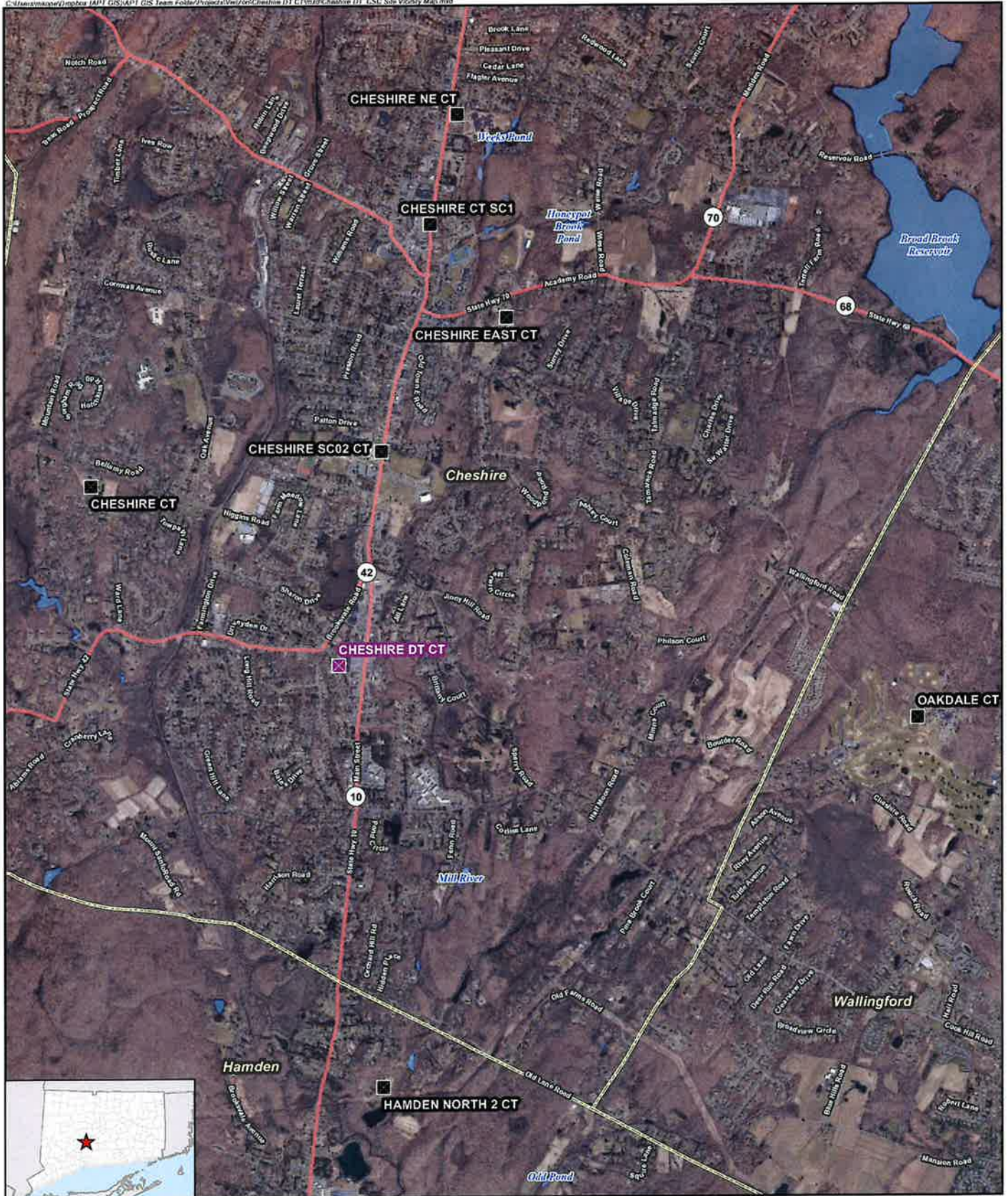
Cellco's existing small cell facilities consist of an antenna and related equipment attached to utility poles in the public rights of way near or adjacent to property at 199 Highland Avenue (Cheshire SC1) and 525 South Main Street (Cheshire SC02) in Cheshire.

Sites Investigated

The Cheshire DT site search was initiated in March of 2020. Cellco identified and investigated a total of seven (7) sites in the area in addition to the Property. A listing of the sites investigated is provided below. (See the attached Site Search Summary Map)

1. **1021-1041 South Main Street, Cheshire:** Cellco entered into a lease agreement with Cheshire Station LLC, the owner of this parcel, for the development of the Cheshire DT Facility.
2. **1263 South Main Street, Cheshire:** Cellco explored the development of a new tower on this parcel. The owner (Cheshire Nursery – 1317 South Main Street Associates LLC) was not interested in hosting a tower site.
3. **1125 South Main Street, Cheshire:** Cellco explored the development of a new tower on this parcel. The owner – Town of Cheshire (Fire Station No. 3) was not interested in hosting a tower site.
4. **1250 South Main Street and 1216 South Main Street, Cheshire:** Cellco explored the development of a new tower on this parcel. The owner (Regional Water Authority) does not allow towers in their properties.
5. **140 Cooke Hill Road, Cheshire:** Cellco explored the development of a new tower on this parcel at the suggestion of the Town. Cellco determined that the parcel was too far to the south to serve its objective. In addition, ground space at this site was limited and the building was not tall enough to consider a roof mounted tower.
6. **525 South Main Street, Cheshire:** Cellco explored the development of a new tower on this parcel. The parcel is owned by Cheshire Public Schools. The Director of Facilities informed Cellco that it was not interested in leasing space to construct a tower site on this parcel.

7. **945 South Main Street, Cheshire:** Cellco explored the development of a new tower on this commercial parcel. The owner was not interested in hosting a tower site.
8. **1011 South Main Street, Cheshire:** Cellco explored the development of a new tower on this parcel. The Dowling Ford Dealership property did not have enough ground space for a new tower site.



Legend

- X Proposed Verizon Wireless Facility
- Surrounding Verizon Wireless Facilities
- Municipal Boundary

Base Map Source: 2019 Aerial Photograph (CTECO)
 Map Scale: 1 inch = 3,000 feet
 Map Date: October 2023



Site Vicinity Map

Proposed Wireless
 Telecommunications Facility
 Cheshire DT CT
 1021-1041 South Main Street
 Cheshire, Connecticut





Legend

- Site Investigated
- Approximate Parcel Boundary
- Municipal Boundary

Sites Investigated:

- ① 1021-1041 South Main Street, Cheshire, CT
- ② 1263 South Main Street, Cheshire, CT
- ③ 1125 South Main Street, Cheshire, CT
- ④ 1250 South Main Street and 1216 South Main Street, Cheshire, CT
- ⑤ 140 Cooke Hill Road, Cheshire, CT
- ⑥ 525 South Main Street, Cheshire, CT
- ⑦ 945 South Main Street, Cheshire, CT
- ⑧ 1011 South Main Street, Cheshire, CT

Site Search Summary Map

Proposed Wireless
Telecommunications Facility
Cheshire DT CT
1021-1041 South Main Street
Cheshire, Connecticut

Map Notes:
Base Map Source: 2019 Aerial
Photograph (CT ECO)
Map Scale: 1 Inch = 1,200 feet
Map Date: October 2023

