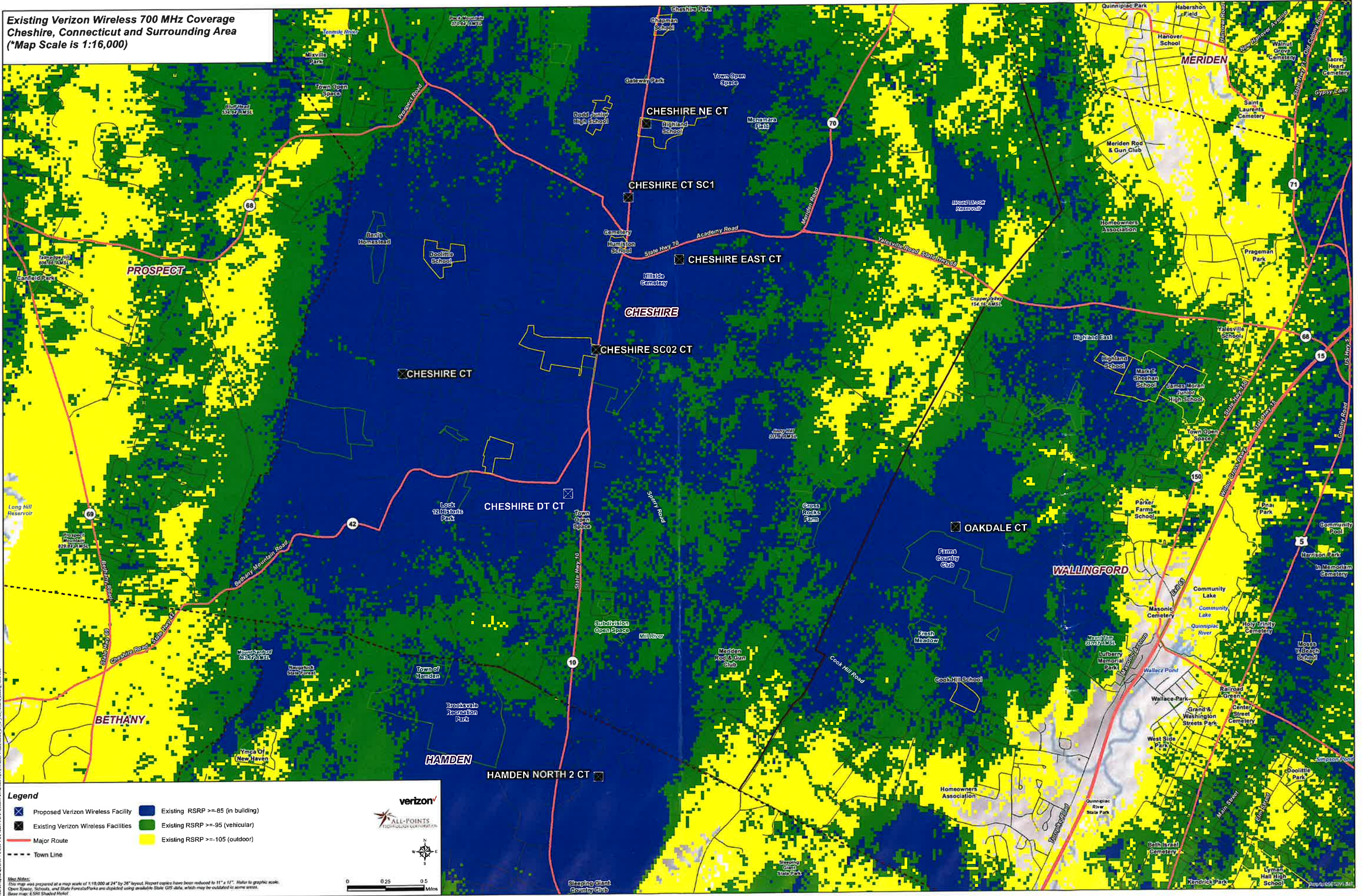


**Existing Verizon Wireless 700 MHz Coverage  
Cheshire, Connecticut and Surrounding Area  
(\*Map Scale is 1:16,000)**



**Legend**

- Proposed Verizon Wireless Facility
- Existing Verizon Wireless Facilities
- Existing RSRP >= 105 (outdoor)
- Existing RSRP >= 85 (in building)
- Existing RSRP >= 95 (vehicular)

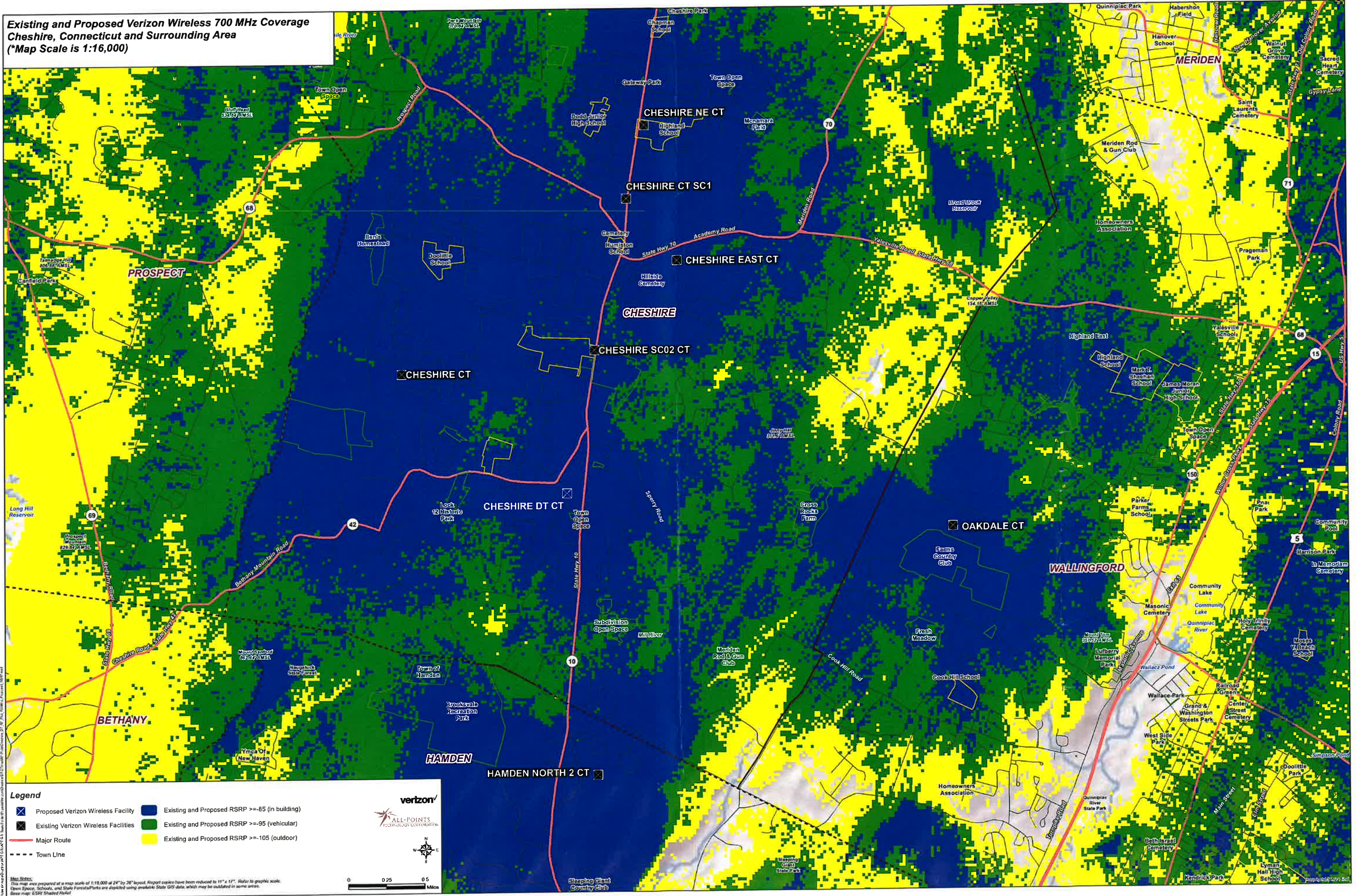
— Major Route  
- - - Town Line

ALL-POINTS  
REGISTRATION SERVICE

Map Notes: This map was prepared at a map scale of 1:16,000 at 24" by 36" layout. Report copies have been reduced to 11" x 17". Refer to graphic scale. Open Space, Schools, and State Forests/Parks are depicted using available State GIS data, which may be outdated for some areas. Base map: ESRI Shaded Relief

0 0.25 0.5 Miles

**Existing and Proposed Verizon Wireless 700 MHz Coverage  
Cheshire, Connecticut and Surrounding Area  
(\*Map Scale is 1:16,000)**

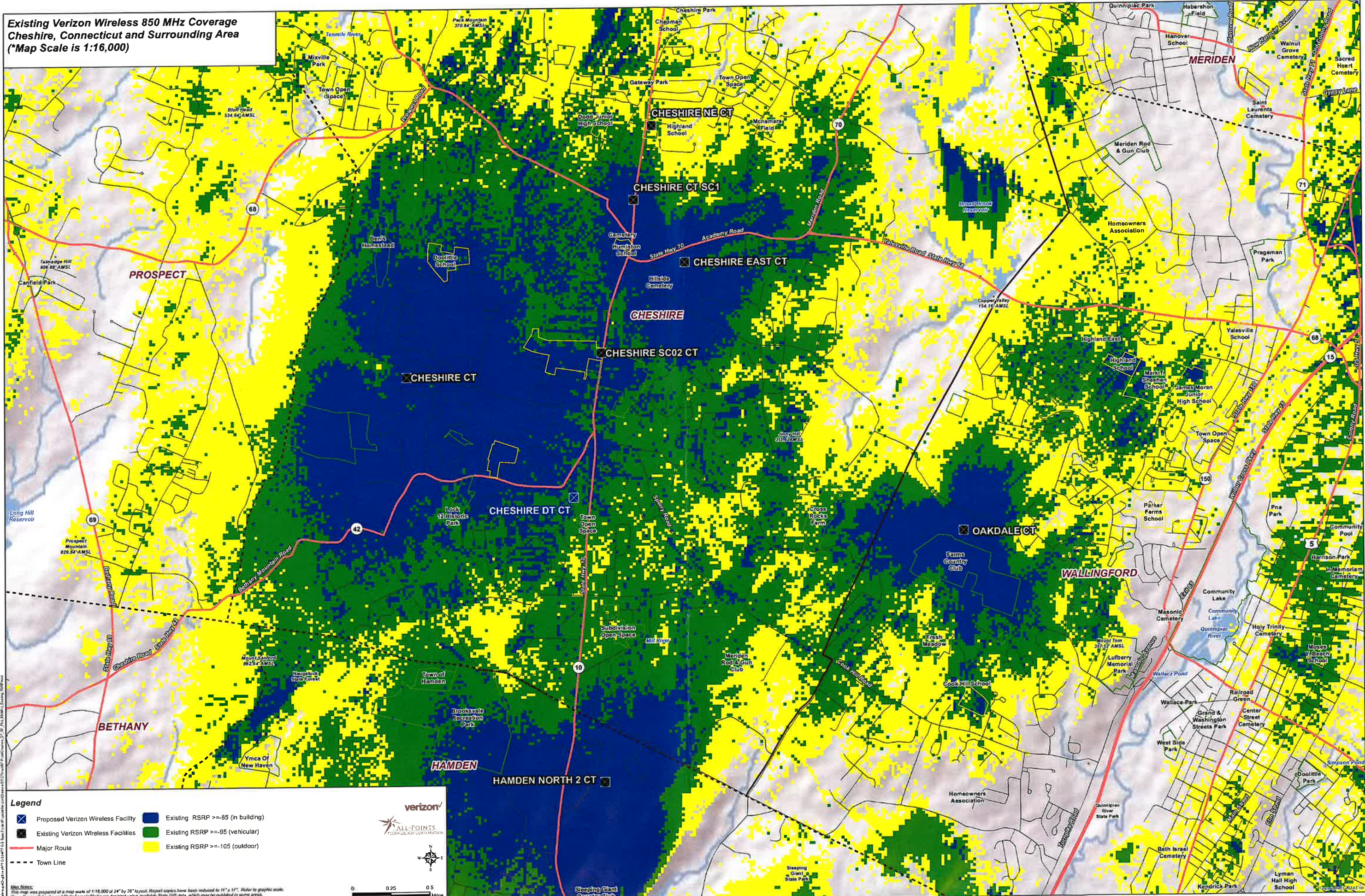


- Legend**
- Proposed Verizon Wireless Facility
  - Existing Verizon Wireless Facilities
  - Existing and Proposed RSRP >=-85 (in building)
  - Existing and Proposed RSRP >=-95 (vehicular)
  - Existing and Proposed RSRP >=-105 (outdoor)
  - Major Route
  - - - Town Line



Notes:  
This map was prepared at a map scale of 1:16,000 at 24" by 36" layout. Report copies have been reduced to 11" x 17". Refer to graphic scale.  
Open Space, Schools, and State Forests/Parks are depicted using available State GIS data, which may be outdated in some areas.  
Base map: ESRI Shaded Relief

**Existing Verizon Wireless 850 MHz Coverage  
Cheshire, Connecticut and Surrounding Area  
(\*Map Scale is 1:16,000)**



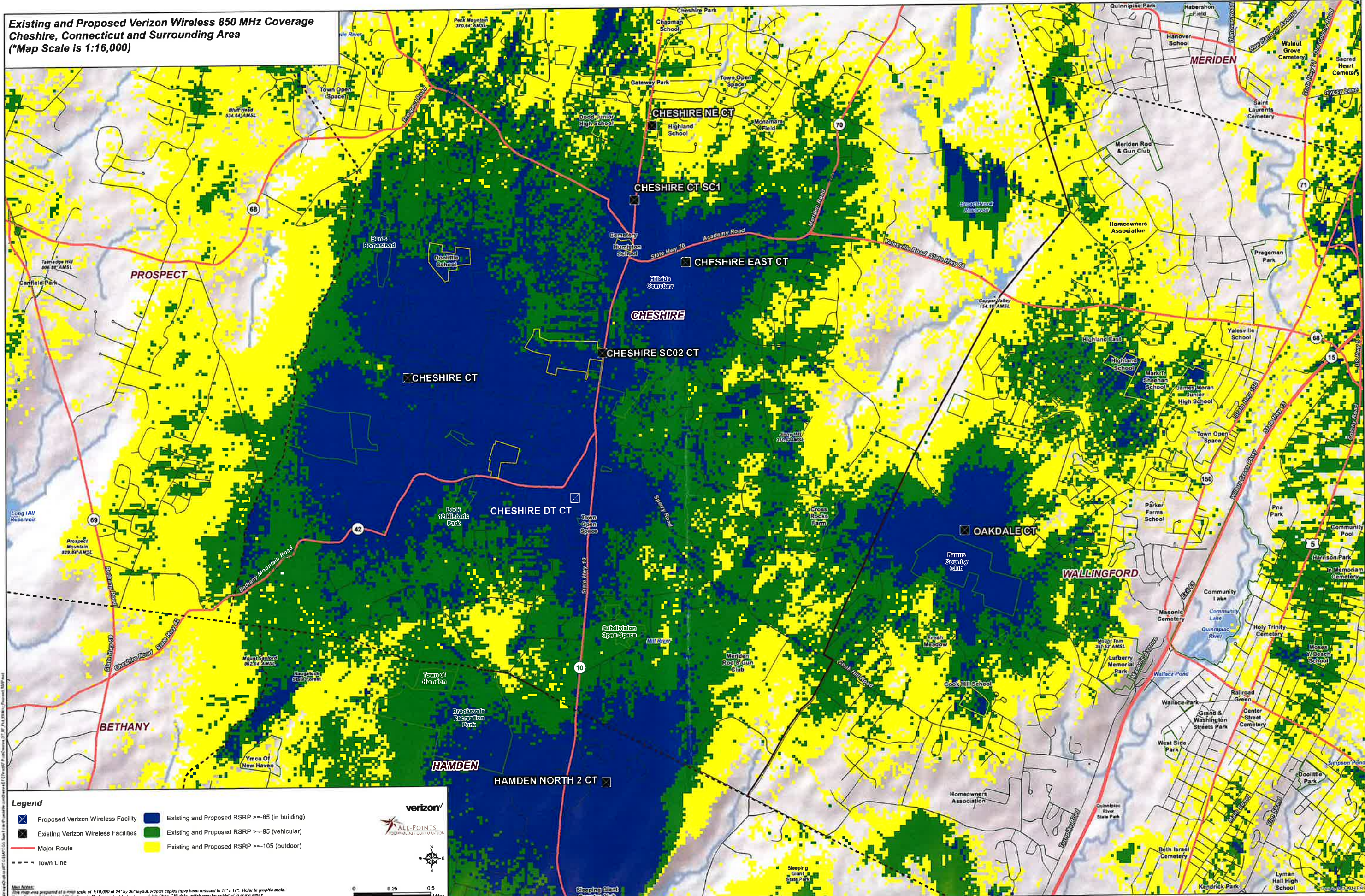
- Legend**
- ✕ Proposed Verizon Wireless Facility
  - ✕ Existing Verizon Wireless Facilities
  - Major Route
  - - - Town Line
  - Existing RSRP >= -85 (in building)
  - Existing RSRP >= -95 (vehicular)
  - Existing RSRP >= -105 (outdoor)

**verizon**  
ALL-POINTS  
TECHNOLOGY CORPORATION

0 0.25 0.5  
Miles

Map Notes:  
This map was prepared at a map scale of 1:16,000 at 24" by 36" by plot. Report copies have been reduced to 11" x 17". Refer to graphic scale.  
Open Space, Schools, and State Forests/Parks are depicted using available State GIS data, which may be outdated in some areas.  
Base map: ESRI Shaded Relief

**Existing and Proposed Verizon Wireless 850 MHz Coverage  
Cheshire, Connecticut and Surrounding Area  
(\*Map Scale is 1:16,000)**



**Legend**

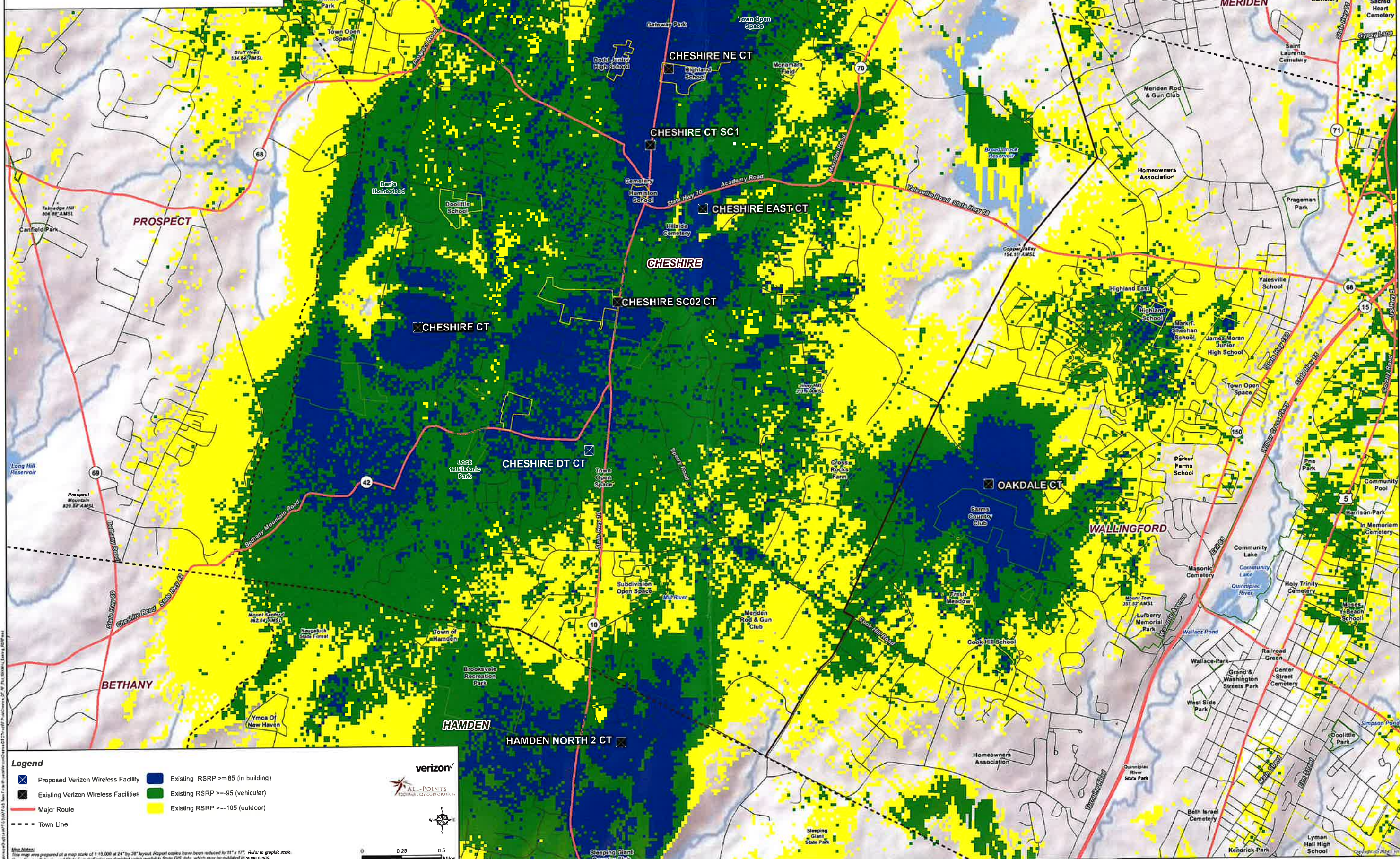
- Proposed Verizon Wireless Facility
- Existing Verizon Wireless Facilities
- Major Route
- Town Line
- Existing and Proposed RSRP >= -85 (in building)
- Existing and Proposed RSRP >= -95 (vehicular)
- Existing and Proposed RSRP >= -105 (outdoor)

**verizon**  
ALL-POINTS  
TECHNOLOGY CORPORATION

**MIN NOTES:**  
The map was prepared at a map scale of 1:16,000 at 24" by 36" layout. Report copies have been reduced to 11" x 17". Refer to graphic scale.  
Open Space, Schools, and State Forests/Parks are depicted using available State GIS data, which may be outdated in some areas.  
Base map: ESRI Shaded Relief

0 0.25 0.5 Miles

**Existing Verizon Wireless 1900 MHz Coverage  
Cheshire, Connecticut and Surrounding Area  
(\*Map Scale is 1:16,000)**



**Legend**

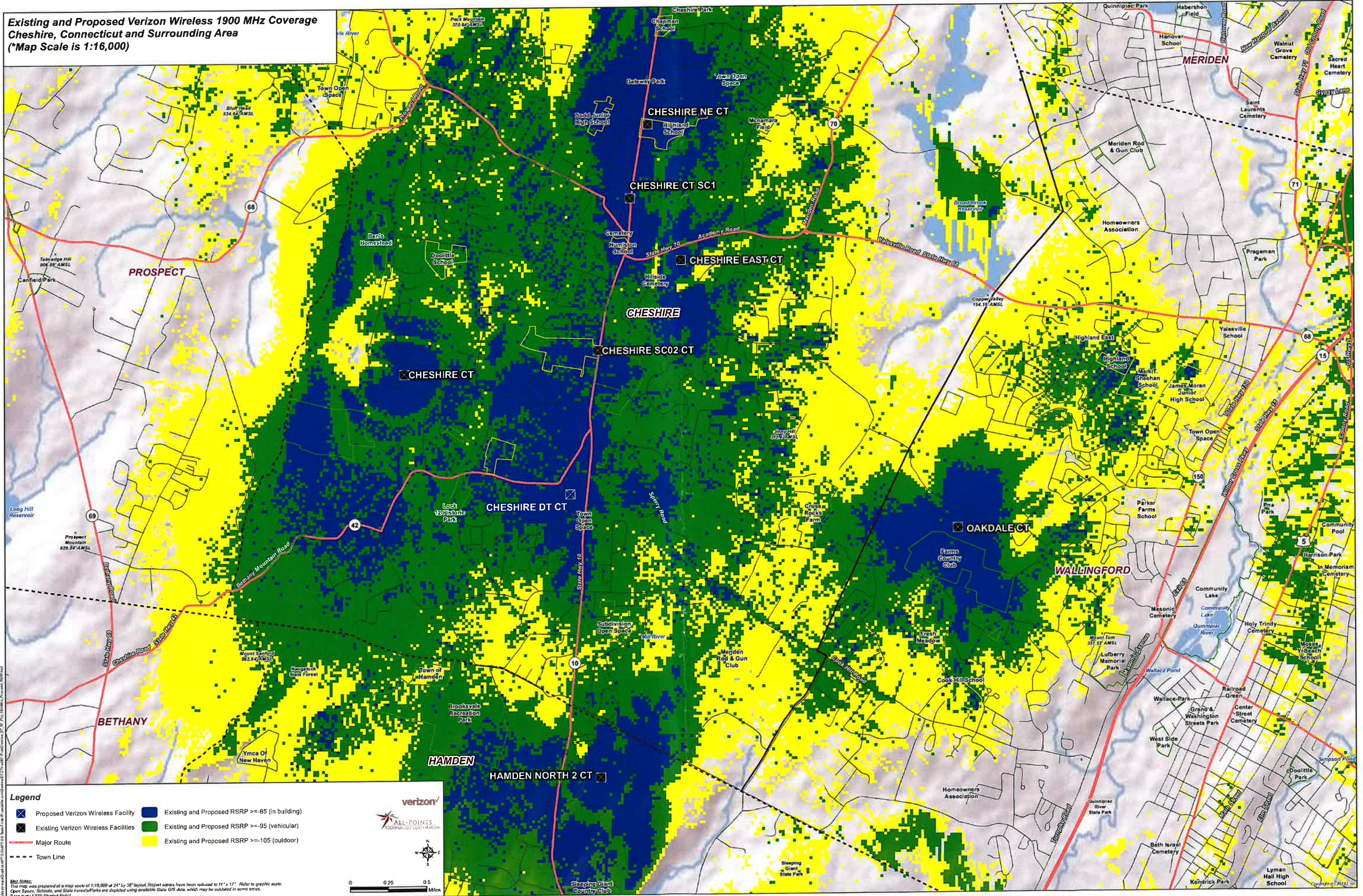
- ✕ Proposed Verizon Wireless Facility
- ✕ Existing Verizon Wireless Facilities
- Major Route
- - - Town Line
- Existing RSRP >= 85 (in building)
- Existing RSRP >= 95 (vehicular)
- Existing RSRP >= 105 (outdoor)

**verizon**  
ALL-POINTS TECHNOLOGY CORPORATION

Map Notes:  
This map was prepared at a map scale of 1:16,000 at 24" by 36" layout. Report copies have been reduced to 11" x 17". Refer to graphic scale.  
Open Space, Schools, and State Forests/Parks are depicted using available State GIS data, which may be outdated in some areas.  
Base map: ESRI Shaded Relief

0 0.25 0.5 Miles

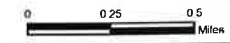
**Existing and Proposed Verizon Wireless 1900 MHz Coverage  
Cheshire, Connecticut and Surrounding Area  
(\*Map Scale is 1:16,000)**



- Legend**
- Proposed Verizon Wireless Facility
  - Existing Verizon Wireless Facilities
  - Major Route
  - - - Town Line
  - Existing and Proposed RSRP >=85 (in building)
  - Existing and Proposed RSRP >=95 (vehicular)
  - Existing and Proposed RSRP >=105 (outdoor)

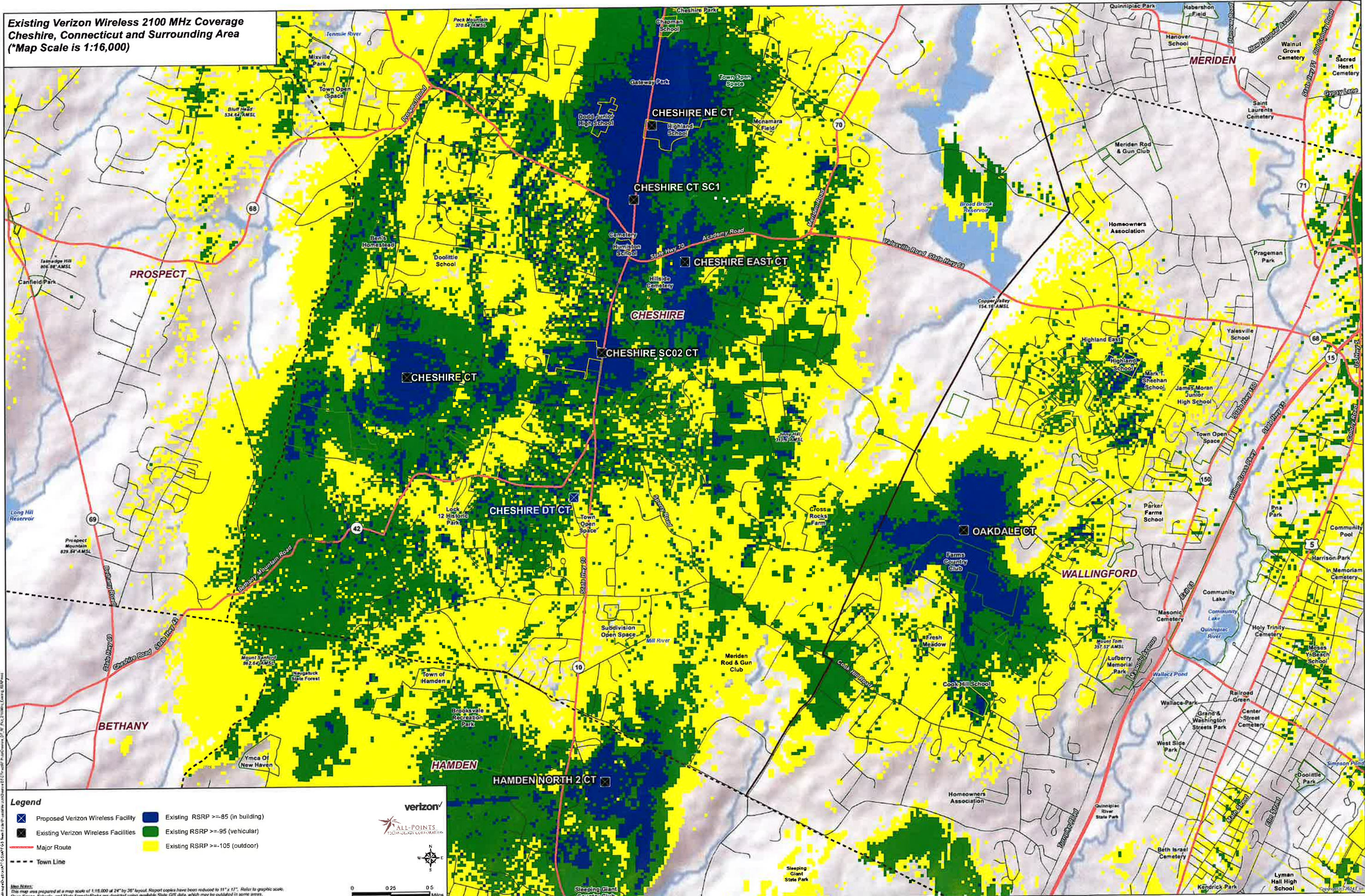


**Map Notes:**  
This map was prepared at a map scale of 1:16,000 of 24" by 36" layout. All point centers have been reduced to 11" x 17". Refer to graphic scale.  
Open Space, Schools, and State Forests/Parks are depicted using available State GIS data, which may be outdated in some areas.  
Base map: ESRI Shaded Relief



Copyright © 2012 Verizon Wireless

**Existing Verizon Wireless 2100 MHz Coverage  
Cheshire, Connecticut and Surrounding Area  
(\*Map Scale is 1:16,000)**



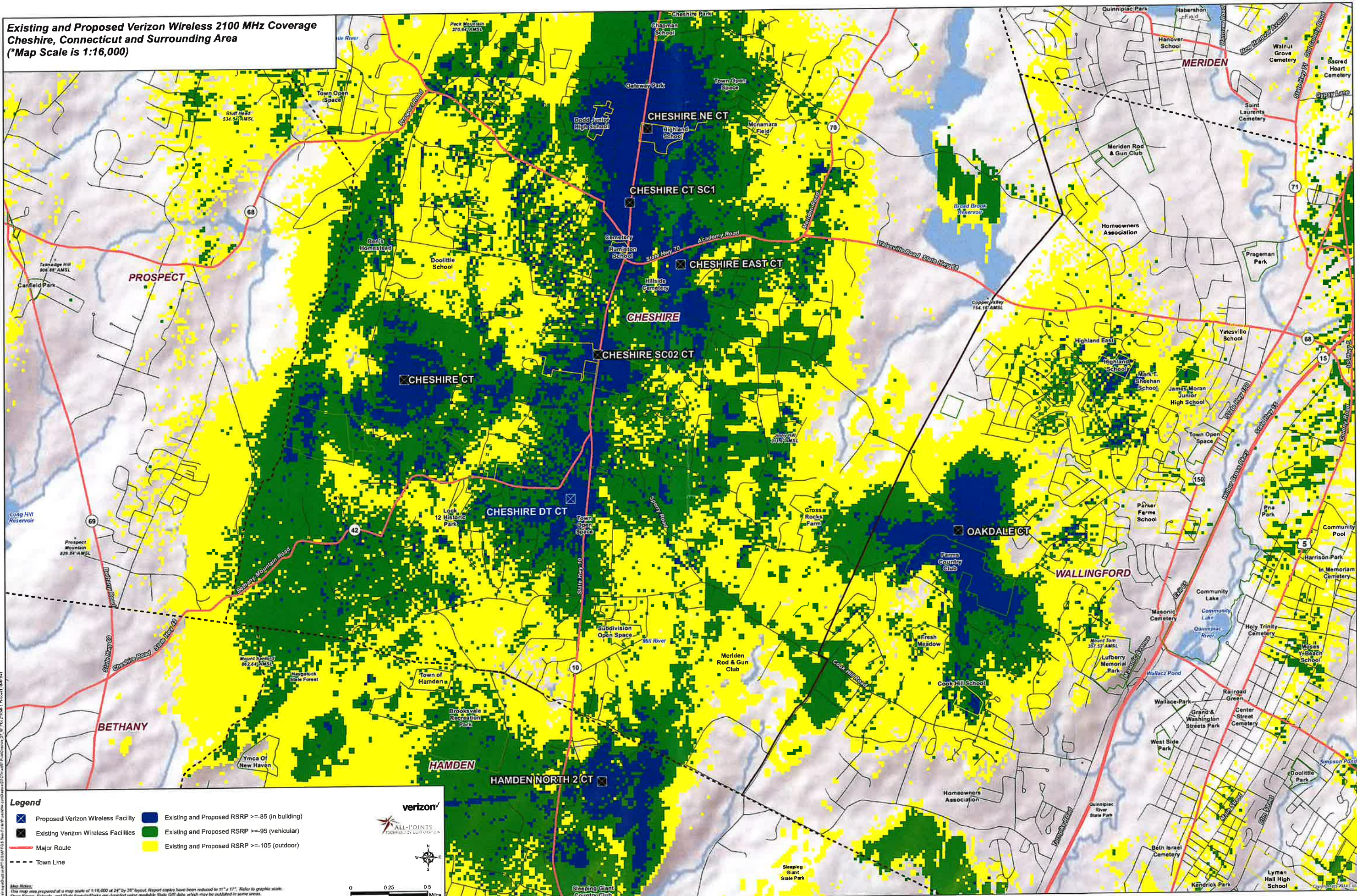
- Legend**
- Proposed Verizon Wireless Facility
  - Existing Verizon Wireless Facilities
  - Existing RSRP >= -85 (in building)
  - Existing RSRP >= -95 (vehicular)
  - Existing RSRP >= -105 (outdoor)
  - Major Route
  - - - Town Line

**verizon**  
ALL-POINTS  
TECHNOLOGY CORPORATION

0 0.25 0.5  
Miles

Notes:  
This map was prepared at a map scale of 1:16,000 at 24" by 36" layout. Report copies have been reduced to 11" x 17". Refer to graphic scale.  
Open Space, Schools, and State Forests/Parks are depicted using available State GIS data, which may be outdated in some areas.  
Base map: ESRI Shaded Relief

**Existing and Proposed Verizon Wireless 2100 MHz Coverage  
Cheshire, Connecticut and Surrounding Area  
(\*Map Scale is 1:16,000)**



- Legend**
- Proposed Verizon Wireless Facility
  - Existing Verizon Wireless Facilities
  - Major Route
  - - - Town Line
  - Existing and Proposed RSRP >= -85 (in building)
  - Existing and Proposed RSRP >= -95 (vehicular)
  - Existing and Proposed RSRP >= -105 (outdoor)

**verizon**  
ALL-POINTS  
TELECOMMUNICATIONS CORPORATION

0 0.25 0.5  
Miles

Map Notes:  
This map was prepared at a map scale of 1:16,000 at 24" by 36" layout. Report copies have been reduced to 11" x 17". Refer to graphic scale.  
Open Space, Schools, and State Forests/Parks are depicted using available State GIS data, which may be outdated in some areas.  
Base map: ESRI Shaded Relief