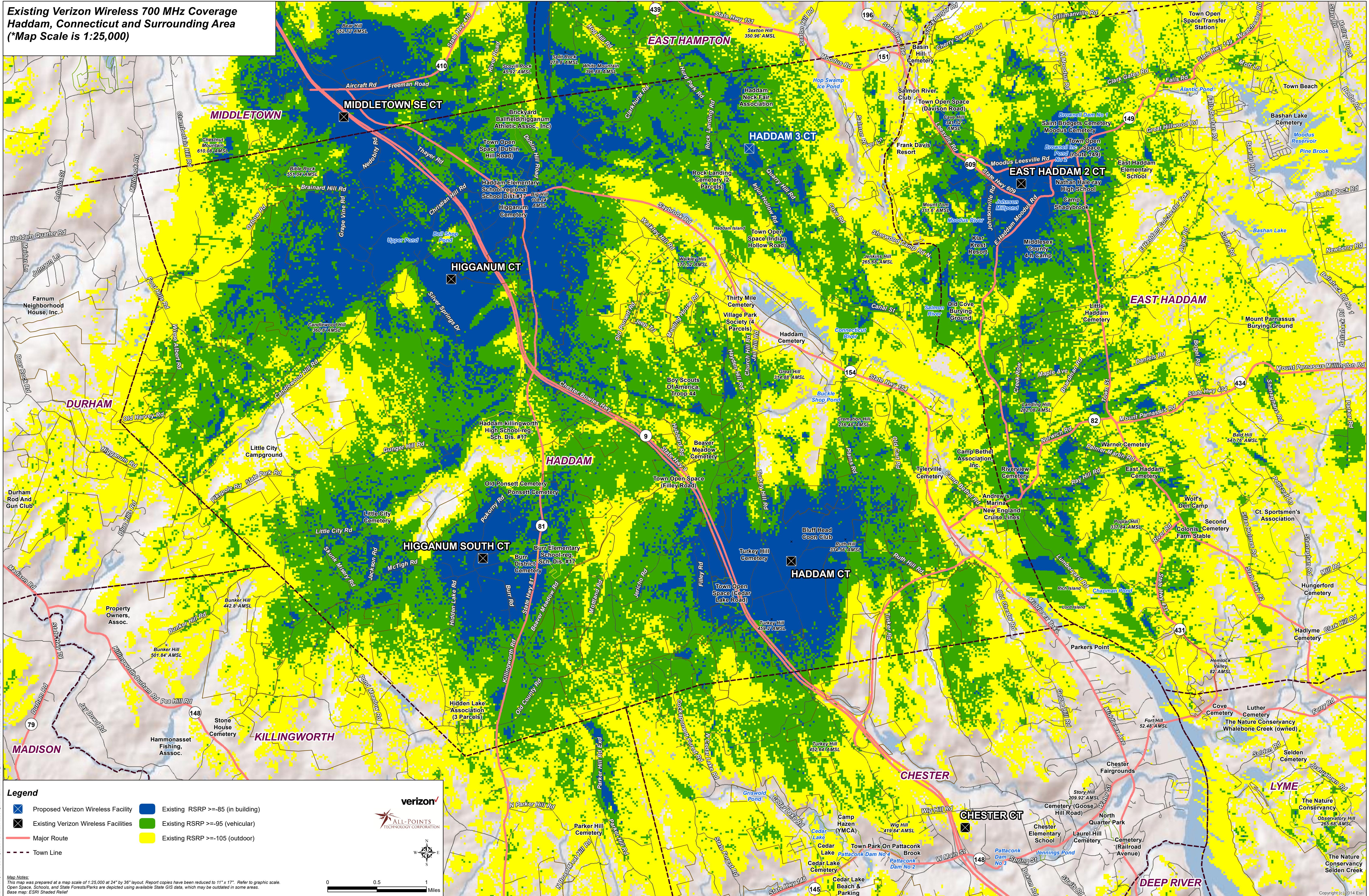


**Existing Verizon Wireless 700 MHz Coverage
Haddam, Connecticut and Surrounding Area
(*Map Scale is 1:25,000)**



Legend

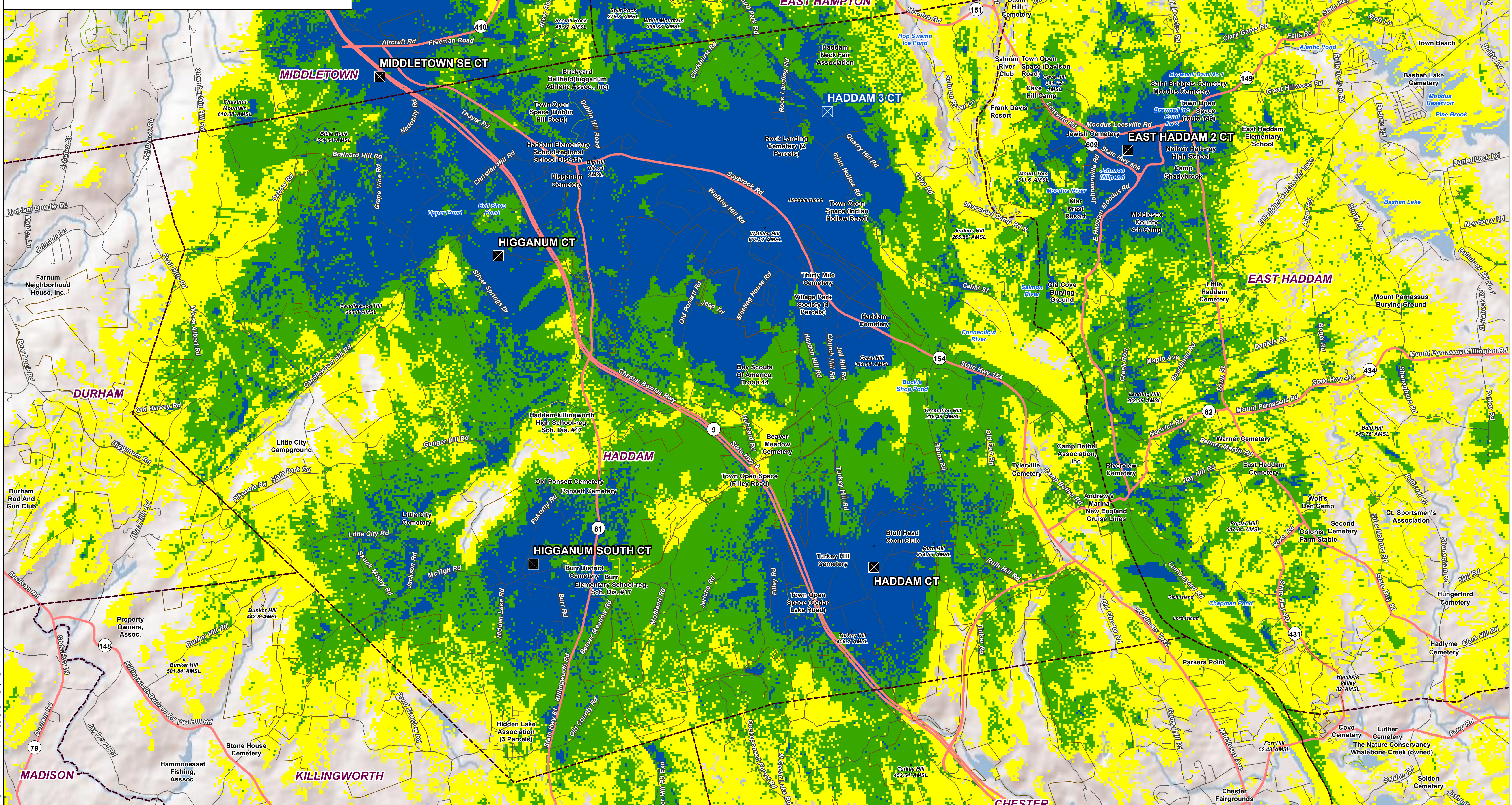
- Proposed Verizon Wireless Facility
- Existing RSRP >= -85 (in building)
- Existing Verizon Wireless Facilities
- Existing RSRP >= -95 (vehicular)
- Major Route
- Existing RSRP >= -105 (outdoor)
- Town Line

Map Notes:
This map was prepared at a map scale of 1:25,000 at 24" by 36" layout. Report copies have been reduced to 11" x 17". Refer to graphic scale.
Open Space, Schools, and State Forests/Parks are depicted using available State GIS data, which may be outdated in some areas.
Base map: ESRI Shaded Relief

Verizon
ALL-POINTS TECHNOLOGY CORPORATION

0 0.5 1 Miles

**Existing and Proposed Verizon Wireless 700 MHz Coverage
Haddam, Connecticut and Surrounding Area
(*Map Scale is 1:25,000)**



Legend

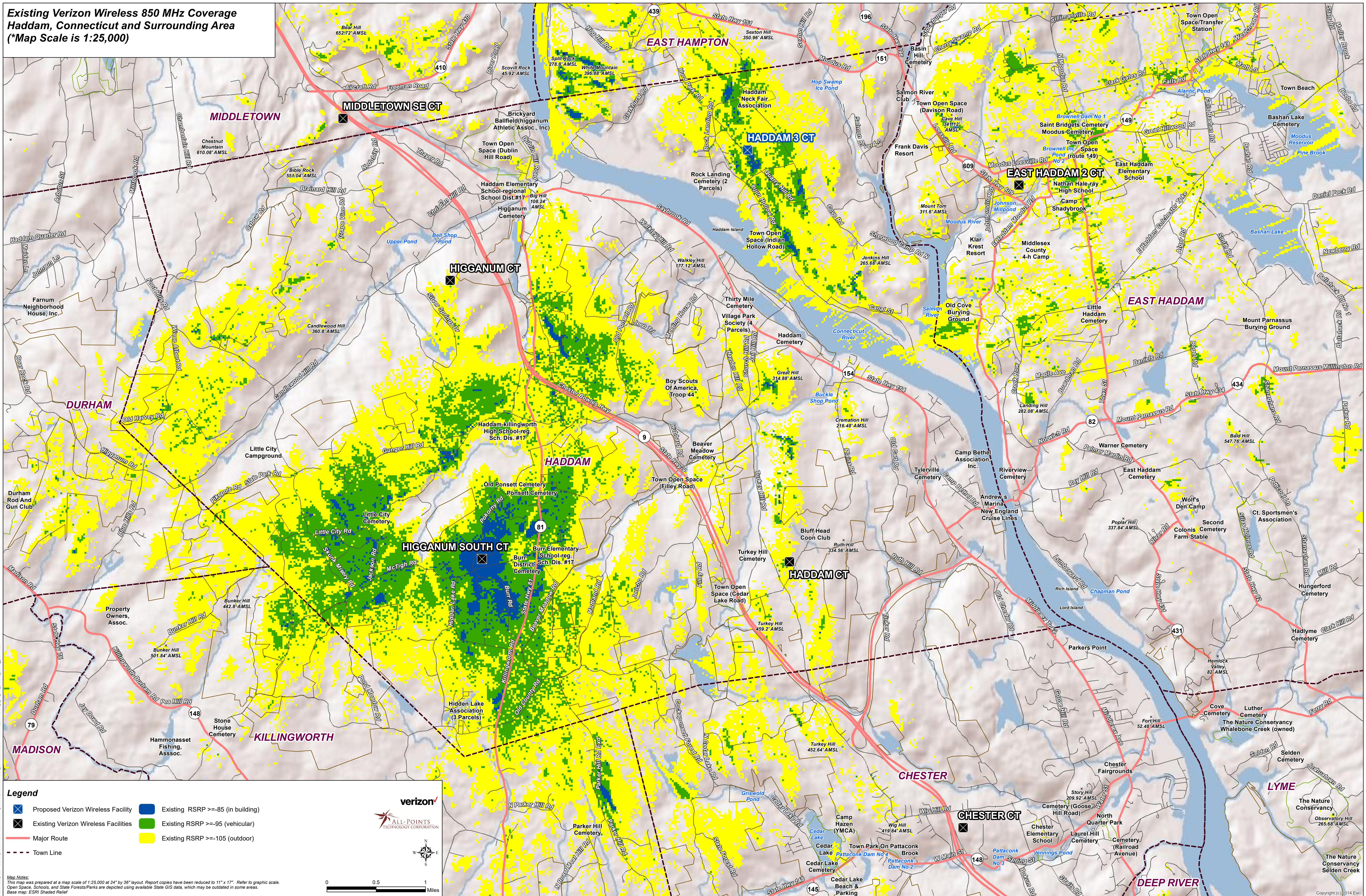
- Proposed Verizon Wireless Facility
- Existing and Proposed RSRP >= -85 (in building)
- Existing and Proposed RSRP >= -95 (vehicular)
- Existing and Proposed RSRP >= -105 (outdoor)
- Existing Verizon Wireless Facilities
- Major Route
- - - Town Line

Map Notes:
This map was prepared at a map scale of 1:25,000 at 24" by 36" layout. Report copies have been reduced to 11" x 17". Refer to graphic scale.
Open Space, Schools, and State Forests/Parks are depicted using available State GIS data, which may be outdated in some areas.
Base map: ESRI Shaded Relief

Verizon
ALL-POINTS
TECHNOLOGY CORPORATION

0 0.5 1 Miles

**Existing Verizon Wireless 850 MHz Coverage
Haddam, Connecticut and Surrounding Area
(*Map Scale is 1:25,000)**



Legend

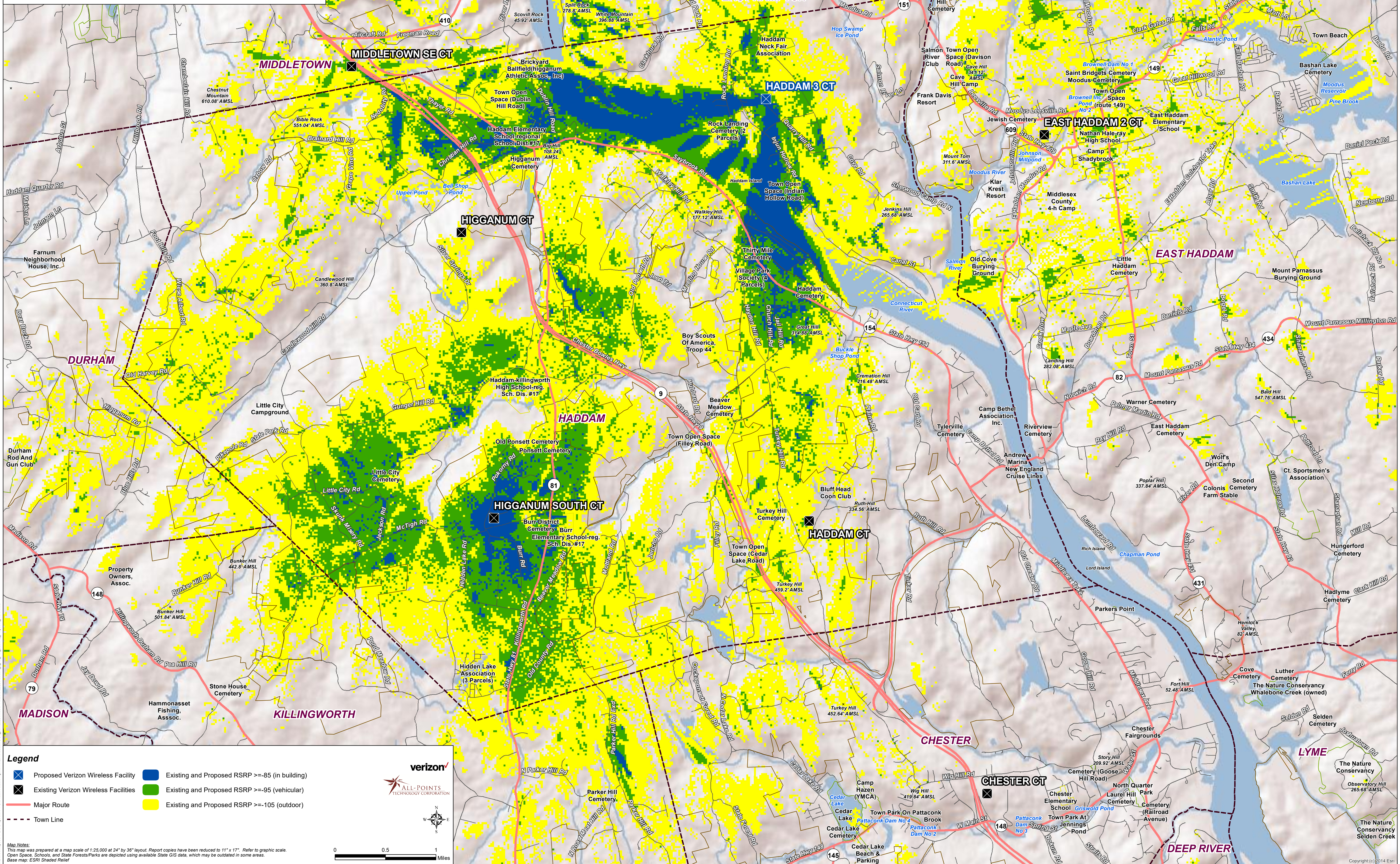
- Proposed Verizon Wireless Facility
- Existing Verizon Wireless Facilities
- Major Route
- Town Line
- Existing RSRP >= -85 (in building)
- Existing RSRP >= -95 (vehicular)
- Existing RSRP >= -105 (outdoor)

Map Notes:
This map was prepared at a map scale of 1:25,000 at 24" x 36" layout. Report copies have been reduced to 11" x 17". Refer to graphic scale.
Open Space, Schools, and State Forests/Parks are depicted using available State GIS data, which may be outdated in some areas.
Base map: ESRI Shaded Relief

Scale: 0 0.5 1 Miles

Logos: Verizon, All-Points Technology Corporation

**Existing and Proposed Verizon Wireless 850 MHz Coverage
Haddam, Connecticut and Surrounding Area
(*Map Scale is 1:25,000)**



Legend

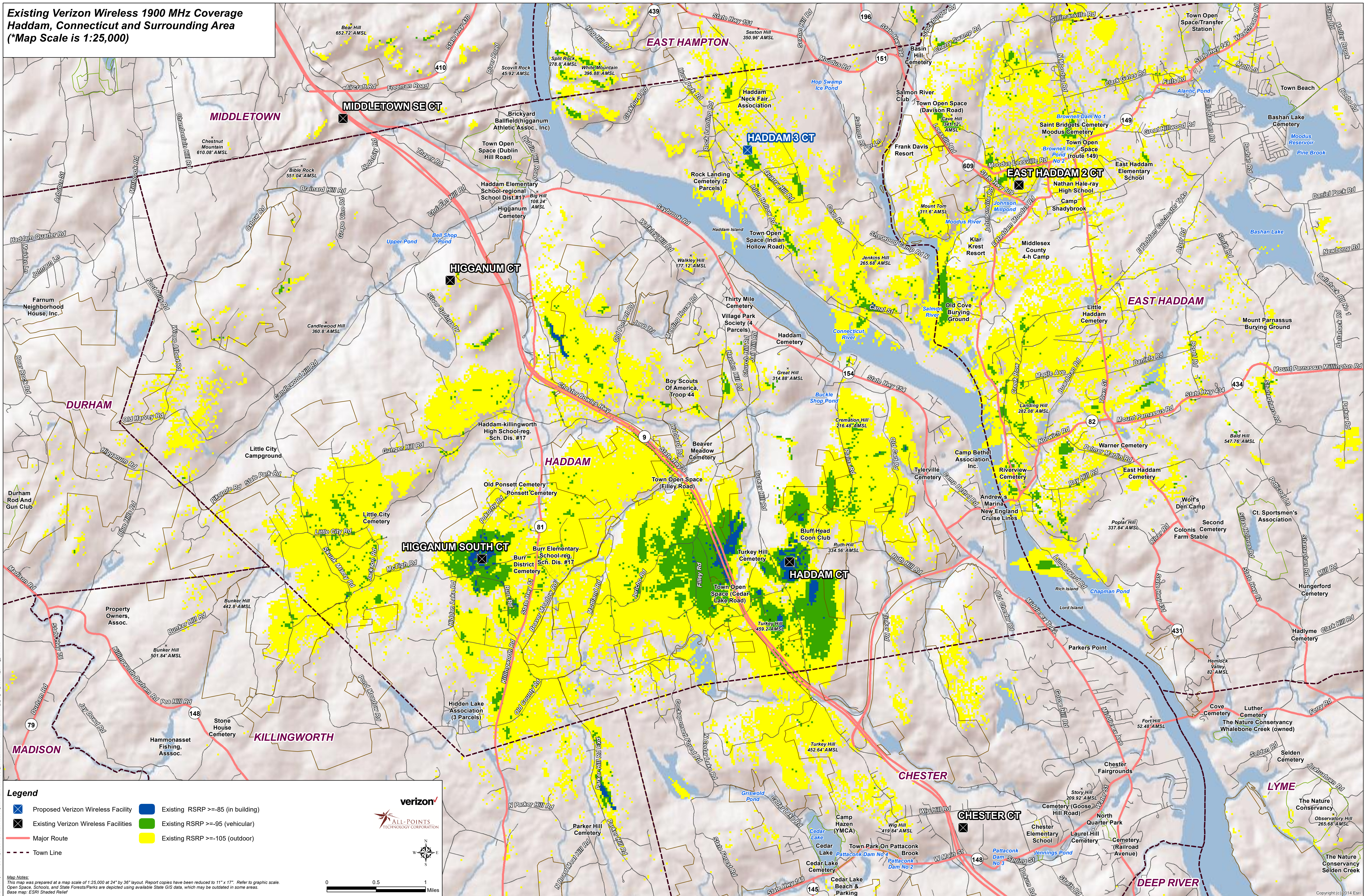
- Proposed Verizon Wireless Facility
- Existing Verizon Wireless Facilities
- Major Route
- - - Town Line
- Existing and Proposed RSRP >= -85 (in building)
- Existing and Proposed RSRP >= -95 (vehicular)
- Existing and Proposed RSRP >= -105 (outdoor)

Map Notes:
 This map was prepared at a map scale of 1:25,000 at 24" x 36" layout. Report copies have been reduced to 11" x 17". Refer to graphic scale.
 Open Space, Schools, and State Forests/Parks are depicted using available State GIS data, which may be outdated in some areas.
 Base map: ESRI Shaded Relief

verizon
 ALL-POINTS
 TECHNOLOGY CORPORATION

0 0.5 1 Miles

**Existing Verizon Wireless 1900 MHz Coverage
Haddam, Connecticut and Surrounding Area
(*Map Scale is 1:25,000)**



Legend

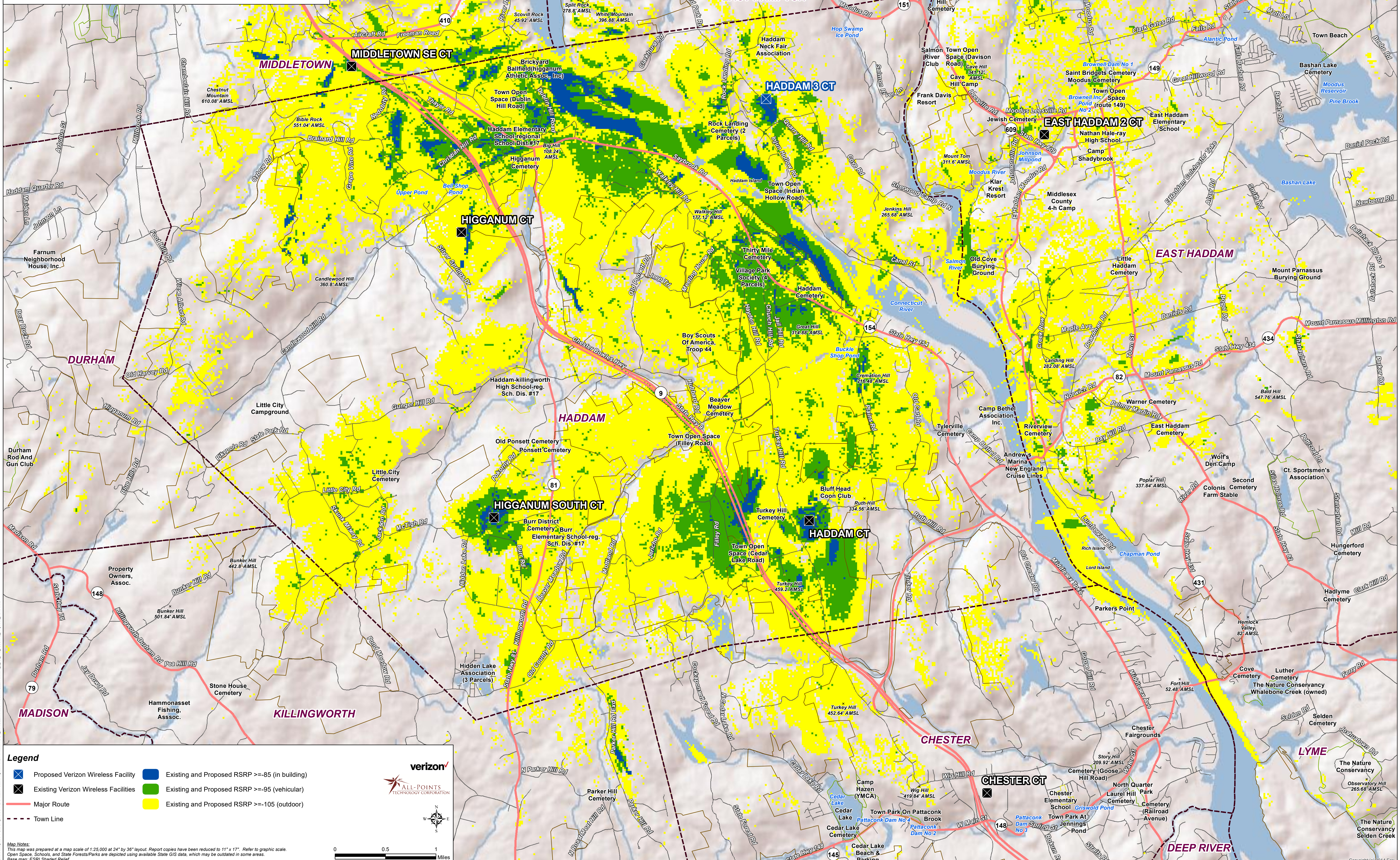
- Proposed Verizon Wireless Facility
- Existing RSRP >= -85 (in building)
- Existing Verizon Wireless Facilities
- Existing RSRP >= -95 (vehicular)
- Major Route
- Existing RSRP >= -105 (outdoor)
- Town Line

Map Notes:
This map was prepared at a map scale of 1:25,000 at 24" by 36" layout. Report copies have been reduced to 11" x 17". Refer to graphic scale.
Open Space, Schools, and State Forests/Parks are depicted using available State GIS data, which may be outdated in some areas.
Base map: ESRI Shaded Relief

verizon
ALL-POINTS
TECHNOLOGY CORPORATION

0 0.5 1 Miles

**Existing and Proposed Verizon Wireless 1900 MHz Coverage
Haddam, Connecticut and Surrounding Area
(*Map Scale is 1:25,000)**



Legend

- Proposed Verizon Wireless Facility
- Existing and Proposed RSRP >= -85 (in building)
- Existing Verizon Wireless Facilities
- Existing and Proposed RSRP >= -95 (vehicular)
- Major Route
- Existing and Proposed RSRP >= -105 (outdoor)
- Town Line

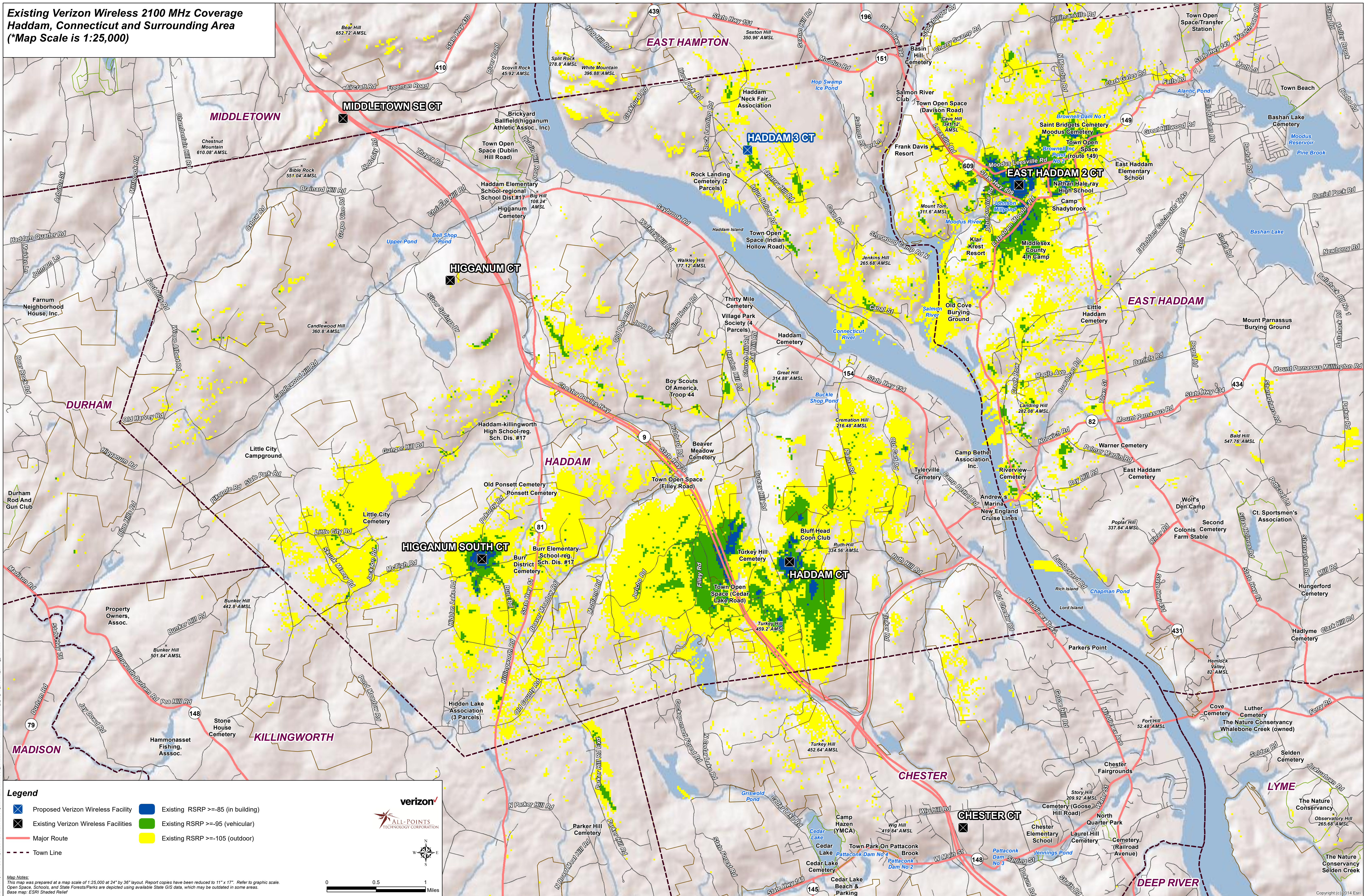
Map Notes:
This map was prepared at a map scale of 1:25,000 at 24" x 36" layout. Report copies have been reduced to 11" x 17". Refer to graphic scale.
Open Space, Schools, and State Forests/Parks are depicted using available State GIS data, which may be outdated in some areas.
Base map: ESRI Shaded Relief

verizon
ALL-POINTS
TECHNOLOGY CORPORATION

0 0.5 1 Miles

Copyright (c) 2014 Esri

**Existing Verizon Wireless 2100 MHz Coverage
Haddam, Connecticut and Surrounding Area
(*Map Scale is 1:25,000)**



Legend

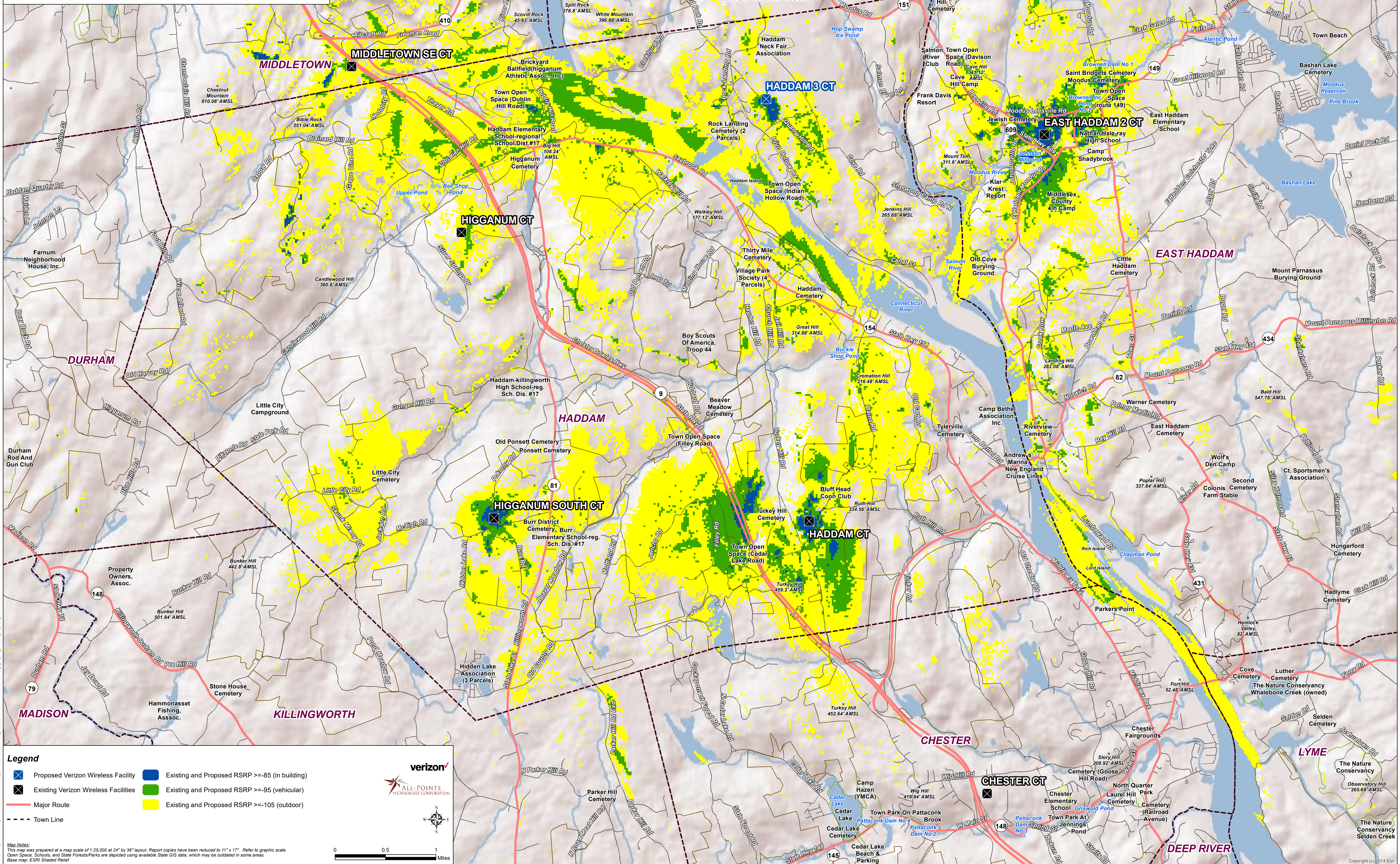
- Proposed Verizon Wireless Facility
- Existing RSRP >= -85 (in building)
- Existing Verizon Wireless Facilities
- Existing RSRP >= -95 (vehicular)
- Major Route
- Existing RSRP >= -105 (outdoor)
- Town Line

Map Notes:
This map was prepared at a map scale of 1:25,000 at 24" by 36" layout. Report copies have been reduced to 11" x 17". Refer to graphic scale.
Open Space, Schools, and State Forests/Parks are depicted using available State GIS data, which may be outdated in some areas.
Base map: ESRI Shaded Relief

verizon
ALL-POINTS
TECHNOLOGY CORPORATION

0 0.5 1 Miles

**Existing and Proposed Verizon Wireless 2100 MHz Coverage
Haddam, Connecticut and Surrounding Area
(*Map Scale is 1:25,000)**



Legend

- Proposed Verizon Wireless Facility
- Existing and Proposed RSRP >= -85 (in building)
- Existing Verizon Wireless Facilities
- Existing and Proposed RSRP >= -95 (vehicular)
- Major Route
- Existing and Proposed RSRP >= -105 (outdoor)
- Town Line

Map Notes:
This map was prepared at a map scale of 1:25,000 at 24" x 36" layout. Report copies have been reduced to 11" x 17". Refer to graphic scale.
Open Space, Schools, and State Forests/Parks are depicted using available State GIS data, which may be outdated in some areas.
Base map: ESRI Shaded Relief

verizon
ALL-POINTS
TECHNOLOGY CORPORATION

0 0.5 1 Miles

Copyright (c) 2014 Esri