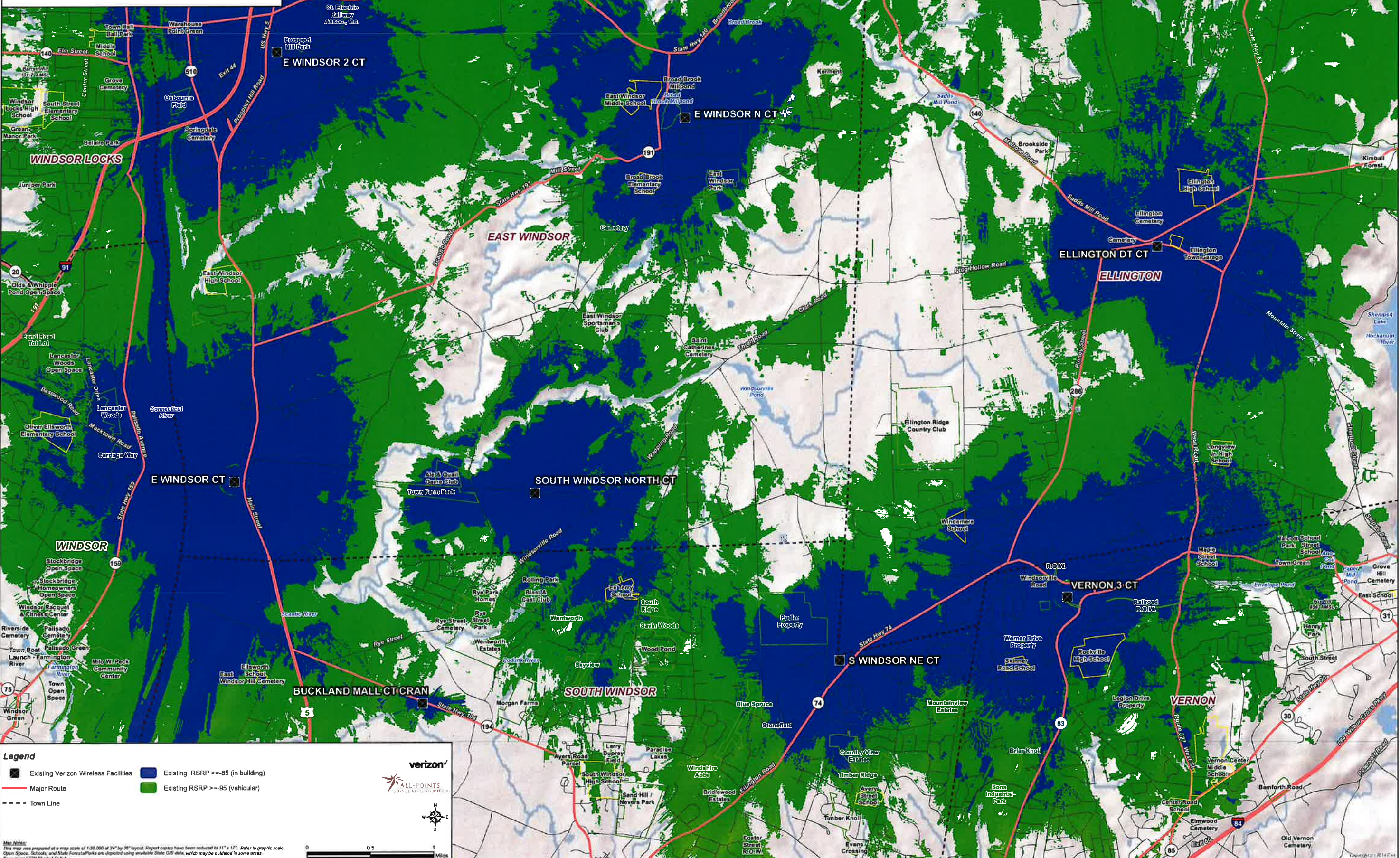


**Existing Verizon Wireless 700 MHz Coverage
Without Broadbrook CT Facility
East Windsor, Connecticut and Surrounding Area
(*Map Scale is 1:20,000)**



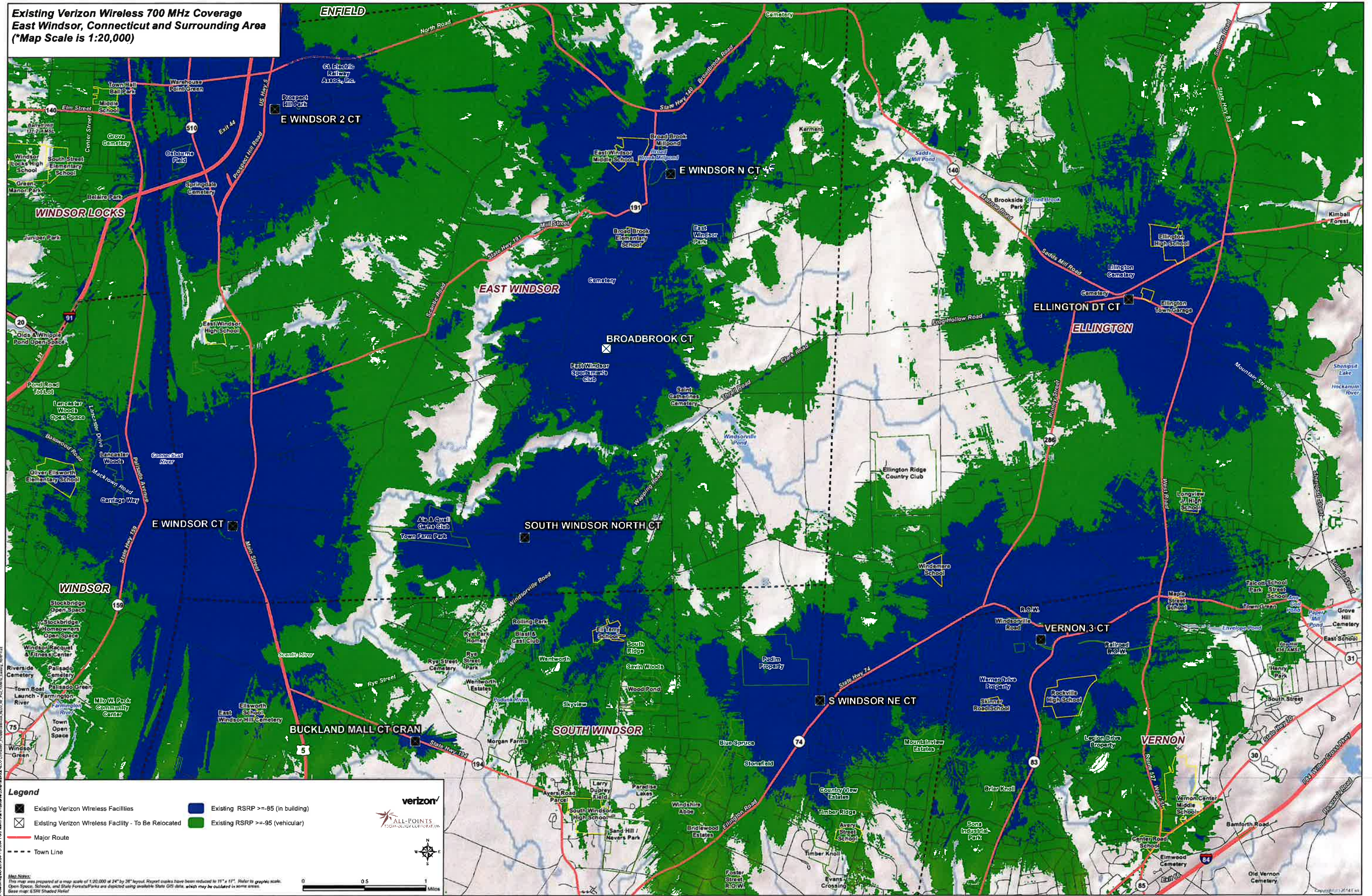
- Legend**
- Existing Verizon Wireless Facilities
 - Existing RSRP >= -85 (in building)
 - Existing RSRP >= -95 (vehicular)
 - Major Route
 - Town Line



Map Notes:
This map was prepared at a map scale of 1:20,000 at 24" by 36" layout. Report copies have been reduced to 11" x 17". Refer to graphic scale.
Open Space, Schools, and State Forests/Parks are depicted using available State GIS data, which may be outdated in some areas.
Base map: SRI Shaded Relief



**Existing Verizon Wireless 700 MHz Coverage
East Windsor, Connecticut and Surrounding Area
(*Map Scale is 1:20,000)**



Legend

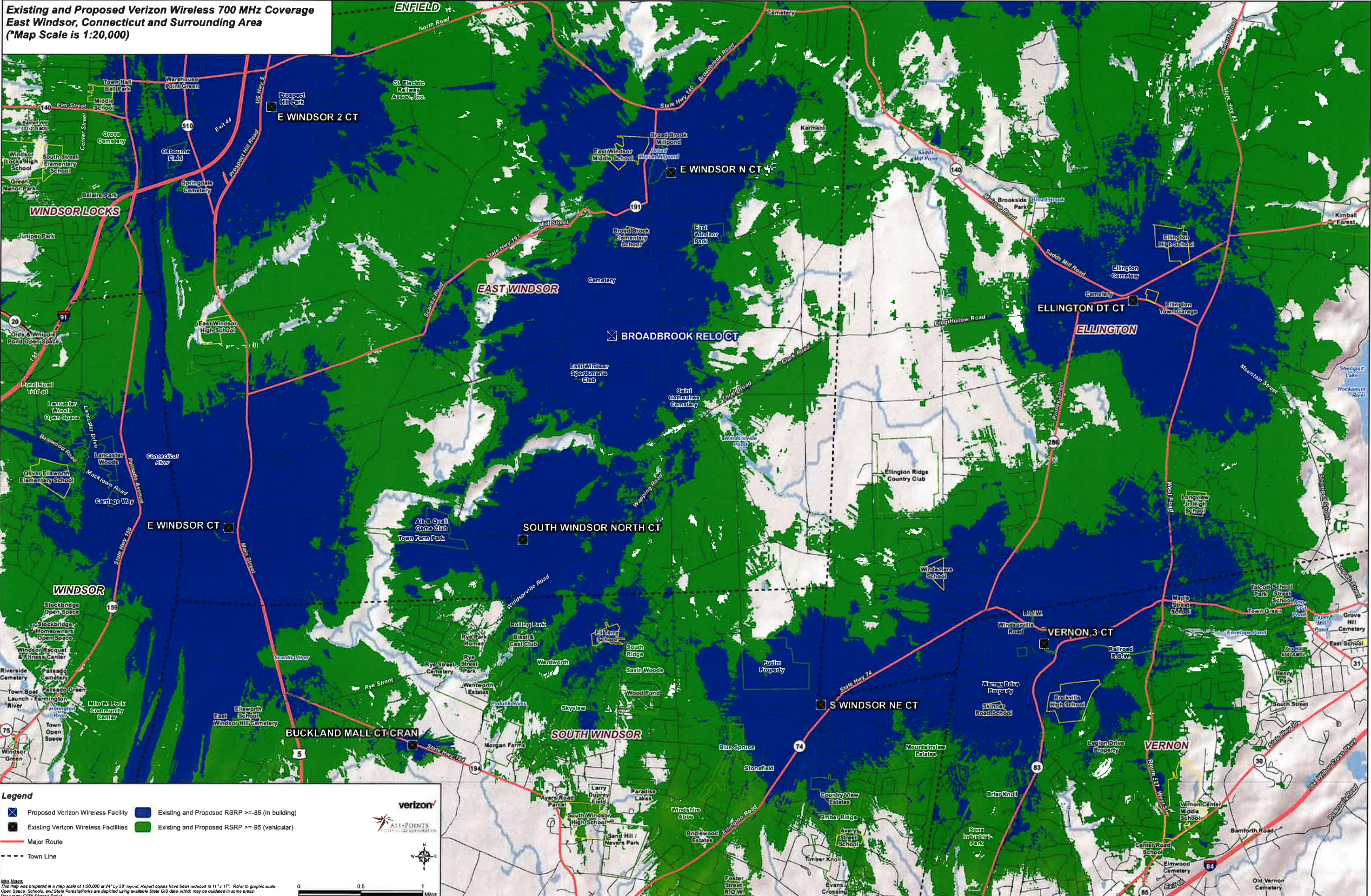
- Existing Verizon Wireless Facilities
- Existing Verizon Wireless Facility - To Be Relocated
- Major Route
- Town Line
- Existing RSRP >= -95 (in building)
- Existing RSRP >= -95 (vehicular)

Verizon
ALL-POINTS
TECHNOLOGY CORPORATION

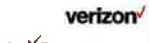
Map Notes:
This map was prepared at a map scale of 1:20,000 at 24" by 36" format. Report circles have been reduced to 11" x 11". Refer to graphic scale.
Open Spaces, Schools, and Study Forests/Parks are depicted using available State GIS data, which may be outdated in some areas.
Base map: 6.581 Shaded Relief

0 0.5 Miles

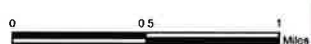
**Existing and Proposed Verizon Wireless 700 MHz Coverage
East Windsor, Connecticut and Surrounding Area
(*Map Scale is 1:20,000)**



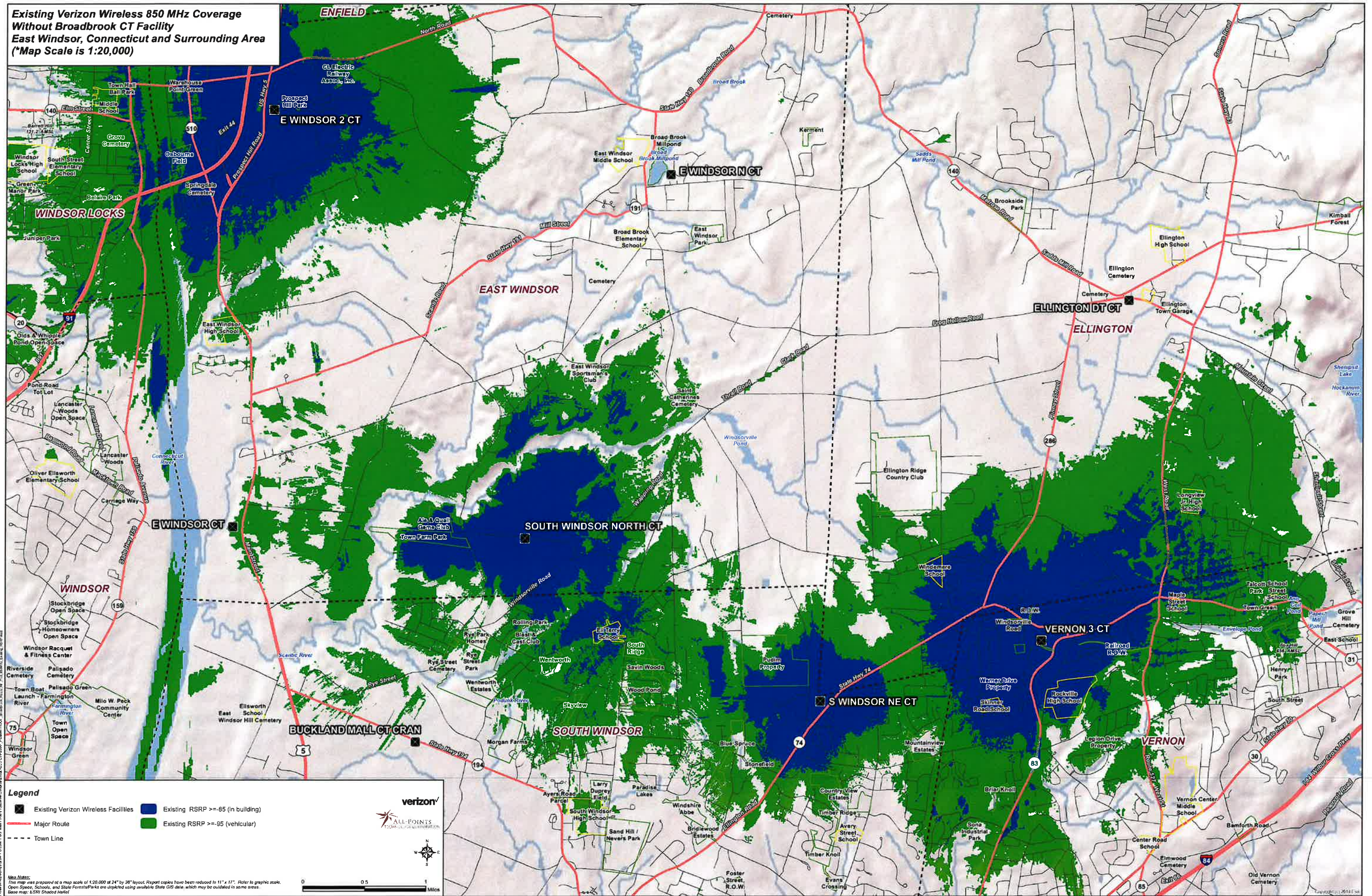
- Legend**
- Proposed Verizon Wireless Facility
 - Existing and Proposed RSRP >= -85 (in building)
 - Existing Verizon Wireless Facilities
 - Existing and Proposed RSRP >= -95 (vehicular)
 - Major Route
 - - - Town Line



Map Notes:
This map was prepared at a map scale of 1:20,000 at 24" by 36" layout. Printed copies have been reduced to 11" x 17". Refer to graphic scale.
Open Space, Schools, and State Forests/Parks are depicted using available State GIS data, which may be outdated in some areas.
Base map: ESRI Shaded Relief



**Existing Verizon Wireless 850 MHz Coverage
Without Broadbrook CT Facility
East Windsor, Connecticut and Surrounding Area
(*Map Scale is 1:20,000)**



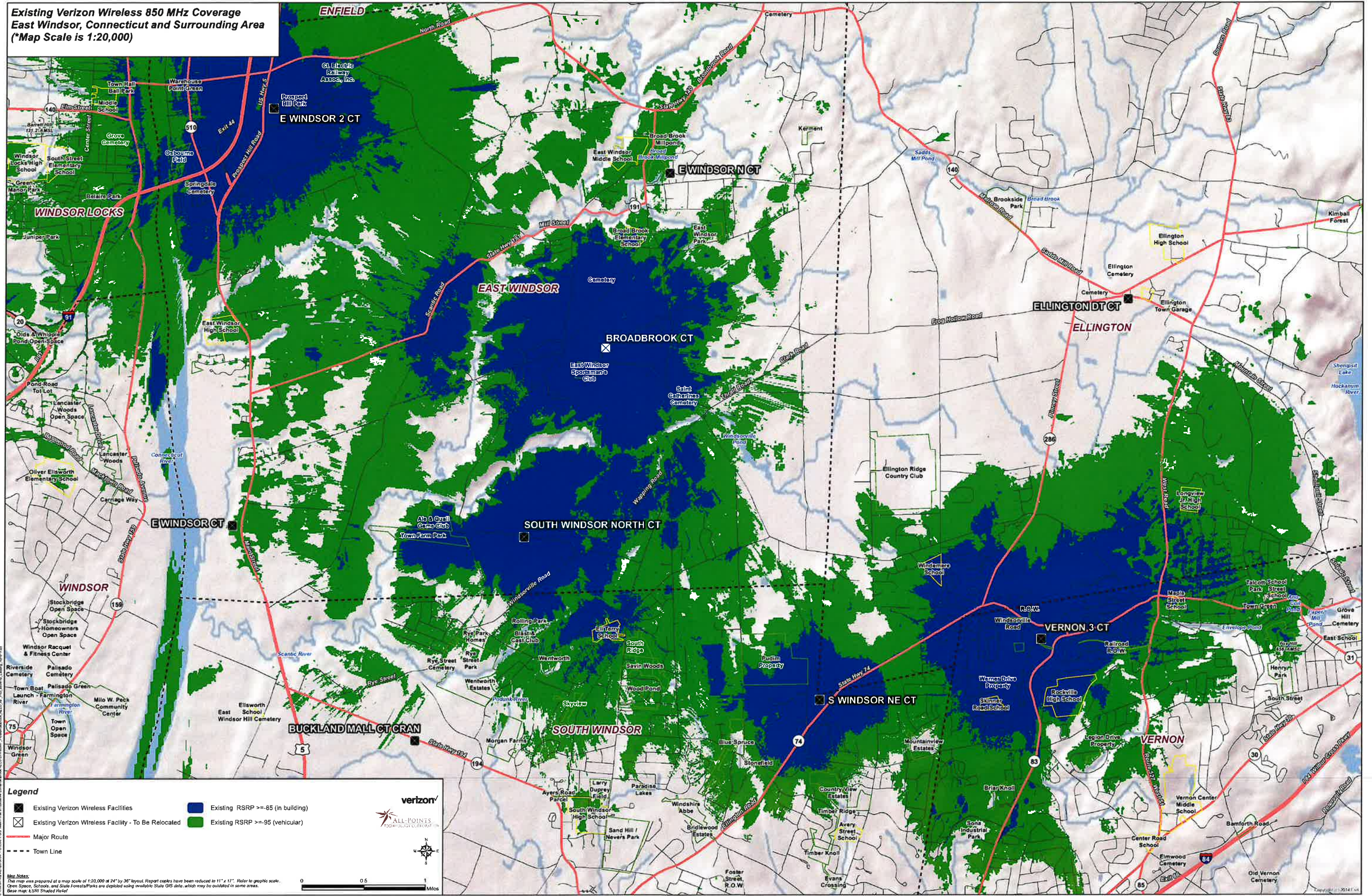
- Legend**
- Existing Verizon Wireless Facilities
 - Existing RSRP >= -85 (in building)
 - Major Route
 - Existing RSRP >= -95 (vehicular)
 - Town Line



Map Notes:
This map was prepared at a map scale of 1:20,000 at 24" by 36" layout. Report copies have been reduced to 11" x 17". Refer to graphic scale.
Open Space, Schools, and State Forests/Parks are depicted using available State GIS data, which may be outdated in some areas.
Base map: ESRI Shaded Relief



**Existing Verizon Wireless 850 MHz Coverage
East Windsor, Connecticut and Surrounding Area
(*Map Scale is 1:20,000)**



Legend

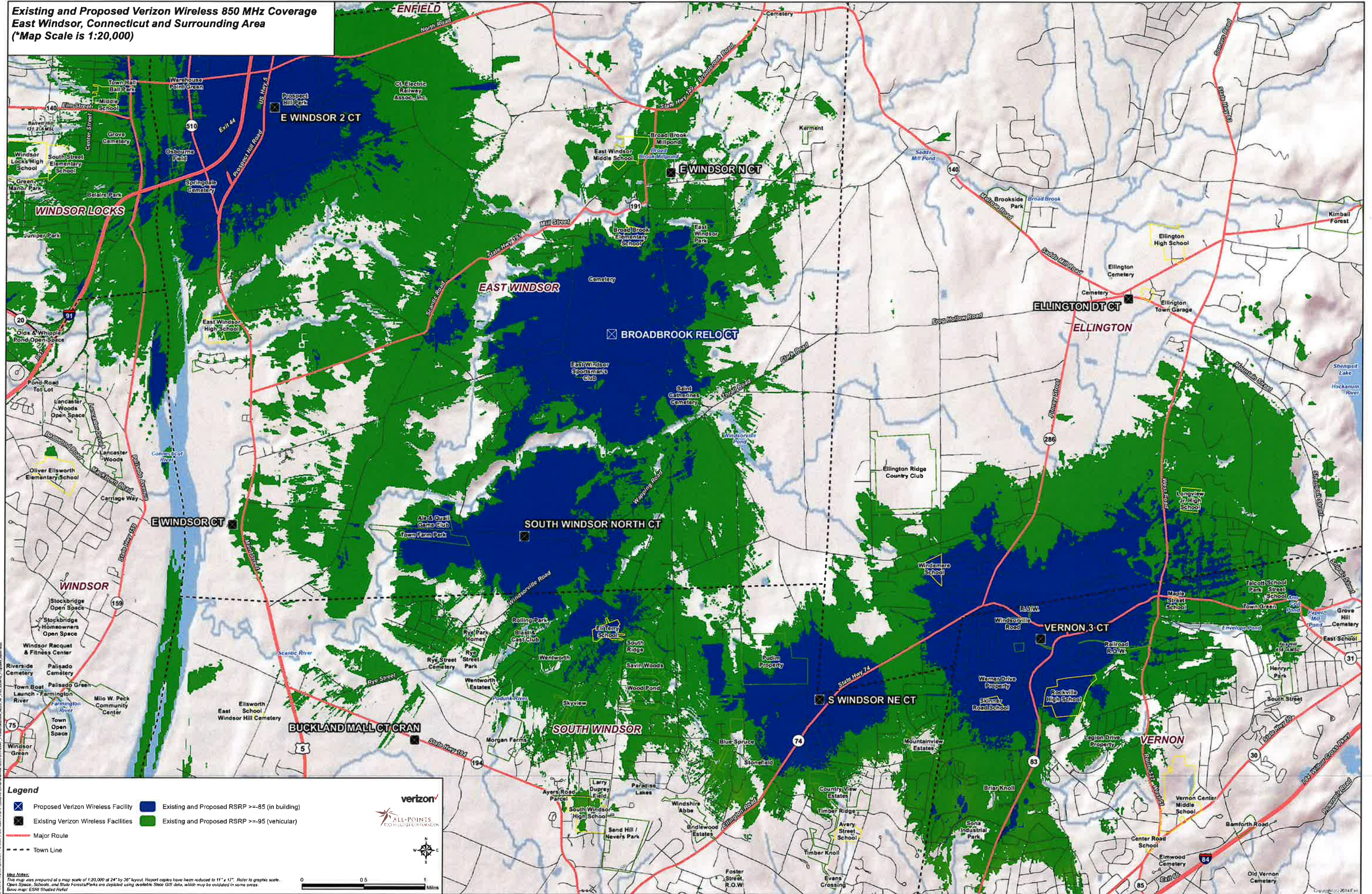
- Existing Verizon Wireless Facilities
- Existing Verizon Wireless Facility - To Be Relocated
- Major Route
- Town Line
- Existing RSRP >= 85 (in building)
- Existing RSRP >= 95 (vehicular)

Verizon
ALL-POINTS
ACCESSIBLE SERVICE

Map Notes:
This map was prepared at a map scale of 1:20,000 at 24" by 36" layout. Report scales have been reduced to 11" x 17". Refer to graphic scale.
Open Space, Schools, and State Forests/Parks are depicted using available State GIS data, which may be outdated in some areas.
Base map: ESRI Shaded Relief

0 0.5 1 Miles

**Existing and Proposed Verizon Wireless 850 MHz Coverage
East Windsor, Connecticut and Surrounding Area
(*Map Scale is 1:20,000)**



Legend

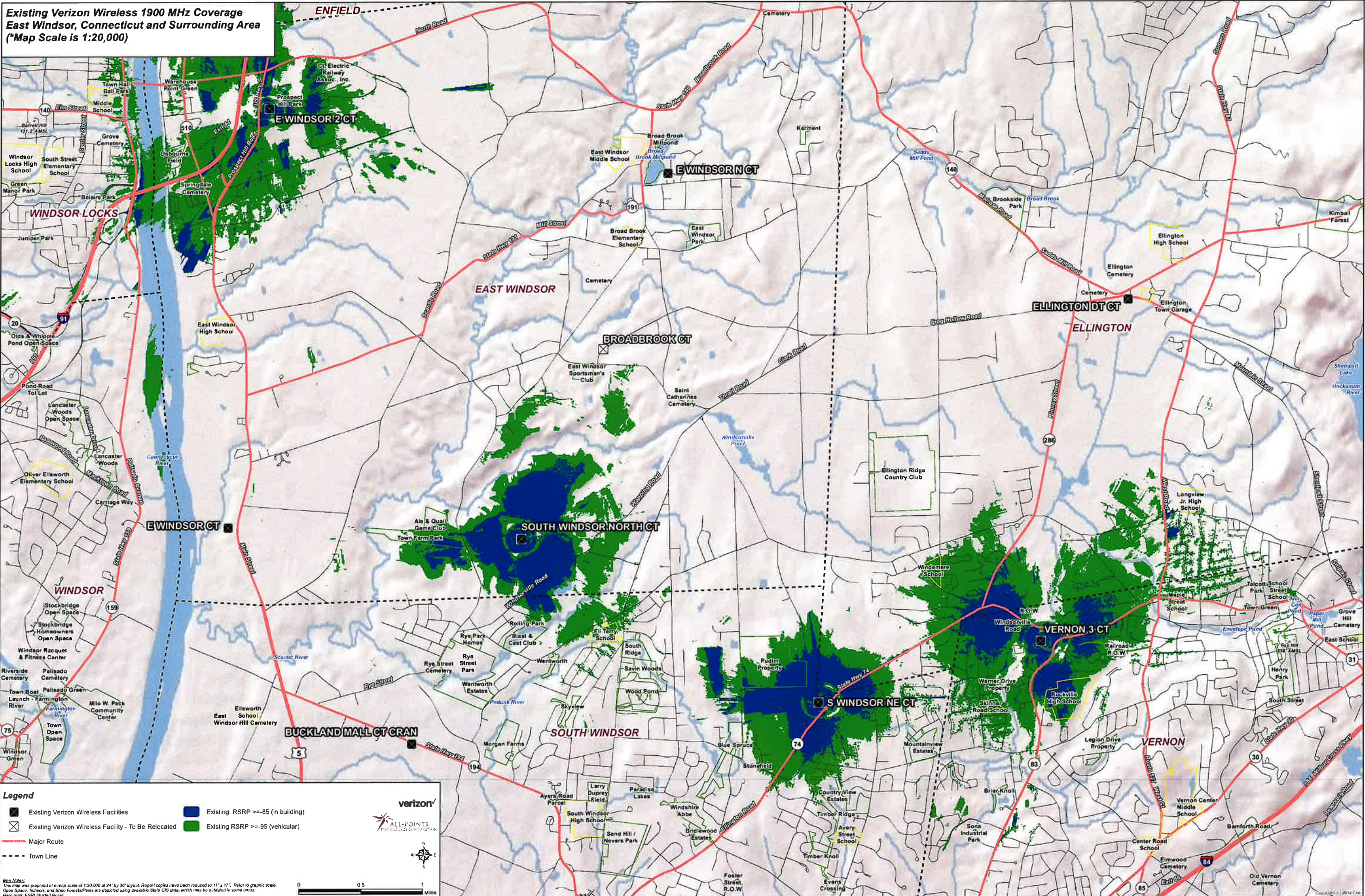
- Proposed Verizon Wireless Facility
- Existing Verizon Wireless Facilities
- Existing and Proposed RSRP >= 85 (in building)
- Existing and Proposed RSRP >= 95 (vehicular)
- Major Route
- - - - - Town Line

Map Notes:
This map was prepared at a map scale of 1:20,000 at 24" by 36" layout. Report copies have been reduced to 11" x 17". Refer to graphic scale. Open Space, Schools, and State Forests/Parks are depicted using available State GIS data, which may be updated in some areas. Base map: ESRI Shaded Relief

Verizon
ALL-POINTS
COMMUNICATIONS CORPORATION

0 0.5 Miles

**Existing Verizon Wireless 1900 MHz Coverage
East Windsor, Connecticut and Surrounding Area
(*Map Scale is 1:20,000)**



Legend

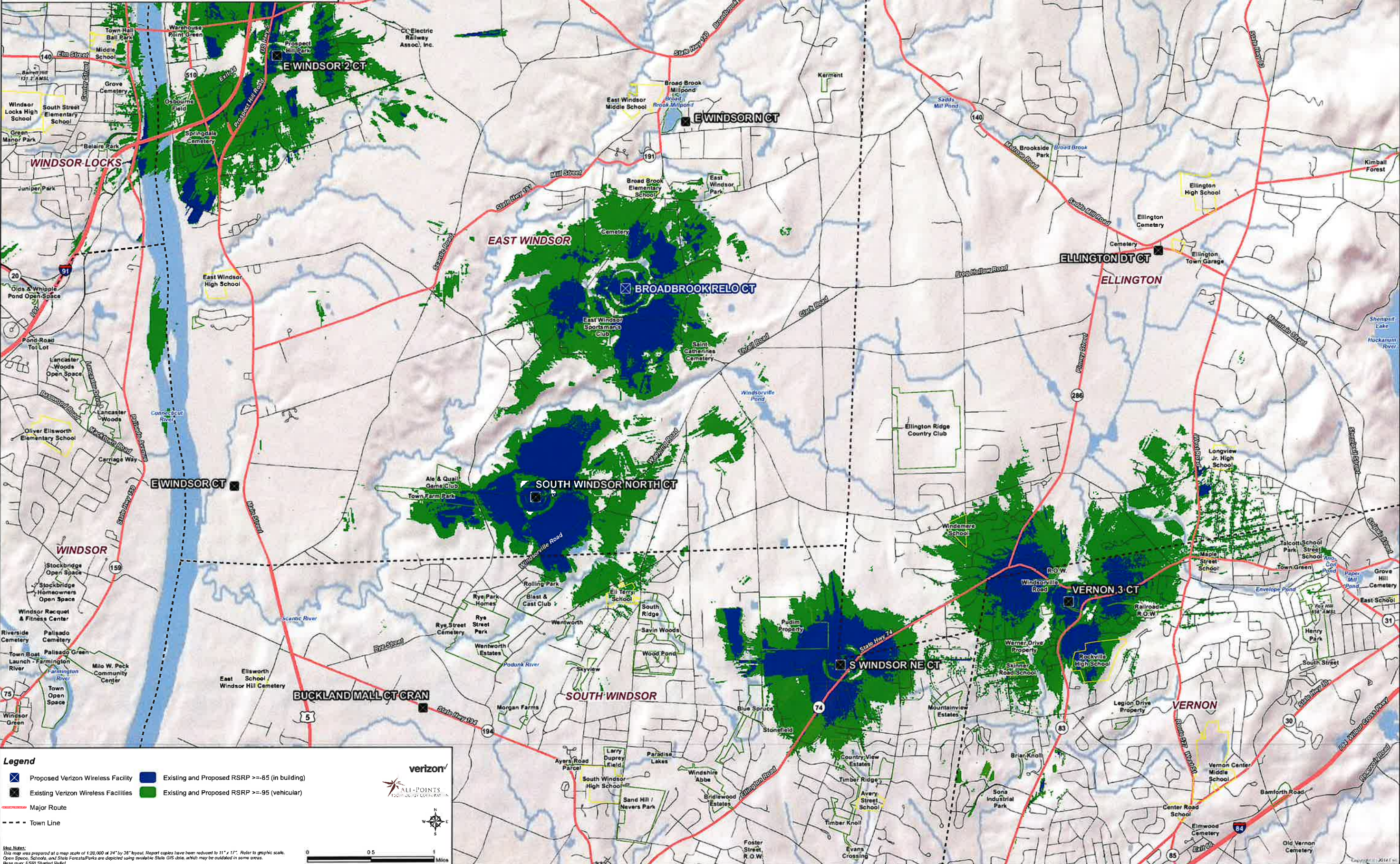
- Existing Verizon Wireless Facilities
- Existing Verizon Wireless Facility - To Be Relocated
- Existing RSRP >= -85 (in building)
- Existing RSRP >= -95 (vehicular)
- Major Route
- Town Line

Map Notes:
This map was prepared at a map scale of 1:20,000 at 24" by 36" layout. Report copies have been reduced to 11" x 17". Refer to graphic scale.
Open Space, Schools and State Forests are depicted using available State GIS data, which may be outdated in some areas.
Base map: ESRI Shaded Relief

Scale: 0 0.5 1 Miles

Verizon
ALL-POINTS
TECHNOLOGY CORPORATION

**Existing and Proposed Verizon Wireless 1900 MHz Coverage
East Windsor, Connecticut and Surrounding Area
(*Map Scale is 1:20,000)**



Legend

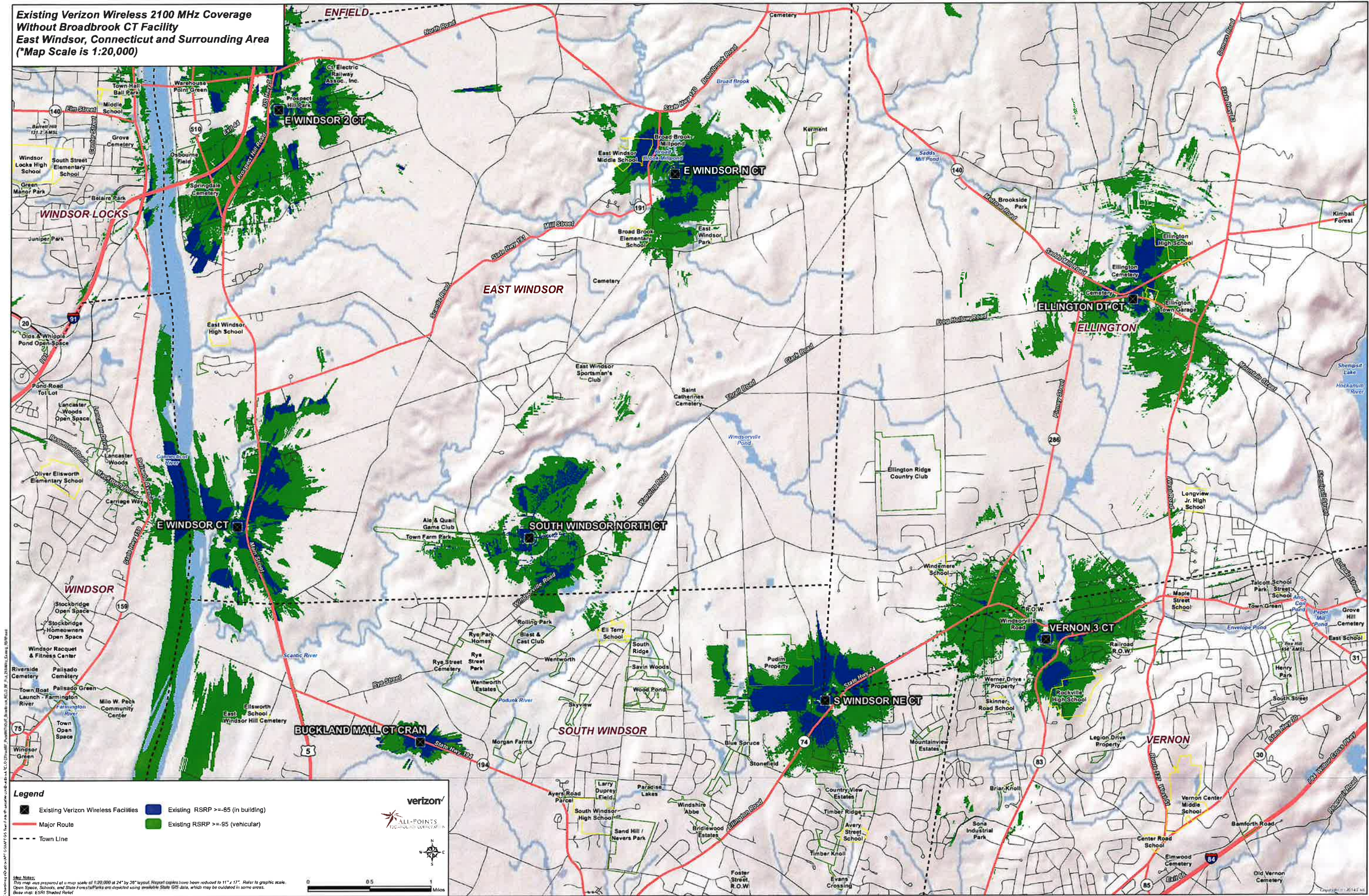
- X Proposed Verizon Wireless Facility
- Existing and Proposed RSRP >= -85 (in building)
- Existing and Proposed RSRP >= -95 (vehicular)
- Existing Verizon Wireless Facilities
- Major Route
- - - Town Line

Map Notes:
This map was prepared at a map scale of 1:20,000 at 24" by 36" layout. Report copies have been reduced to 11" x 17". Refer to graphic scale.
Open Space, Schools and State Forests/Parks are depicted using invisible State GIS data, which may be outdated in some areas.
Base map: ESRI Shaded Relief

verizon
ALL-POINTS
COMMUNICATIONS





0 0.5 1 Miles

**Existing Verizon Wireless 2100 MHz Coverage
Without Broadbrook CT Facility
East Windsor, Connecticut and Surrounding Area
(*Map Scale is 1:20,000)**



Legend

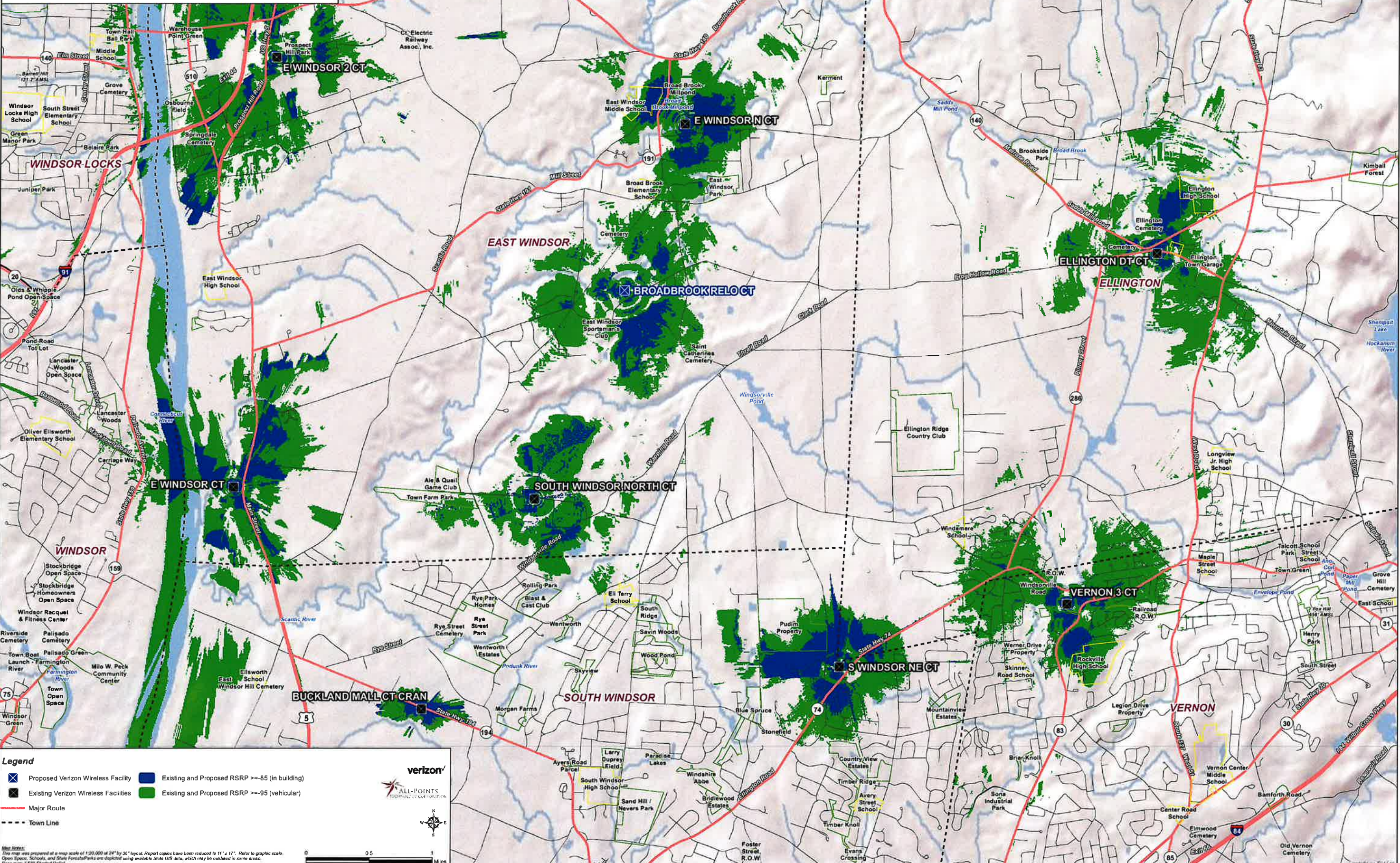
- Existing Verizon Wireless Facilities
- Existing RSRP >= -85 (in building)
- Existing RSRP >= -95 (vehicular)
- Major Route
- Town Line

Map Notes:
This map was prepared at a map scale of 1:20,000 at 24" by 36" layout. Report copies have been reduced to 11" x 17". Refer to graphic scale.
Open Space, Schools, and State Forest/Parks are depicted using available State GIS data, which may be outdated in some areas.
Base map: ESRI Shaded Relief

Copyright 2014 Verizon Wireless. All rights reserved. This map is a service mark of Verizon Wireless. All other marks are the property of their respective owners.

**Existing and Proposed Verizon Wireless 2100 MHz Coverage
East Windsor, Connecticut and Surrounding Area
(*Map Scale is 1:20,000)**



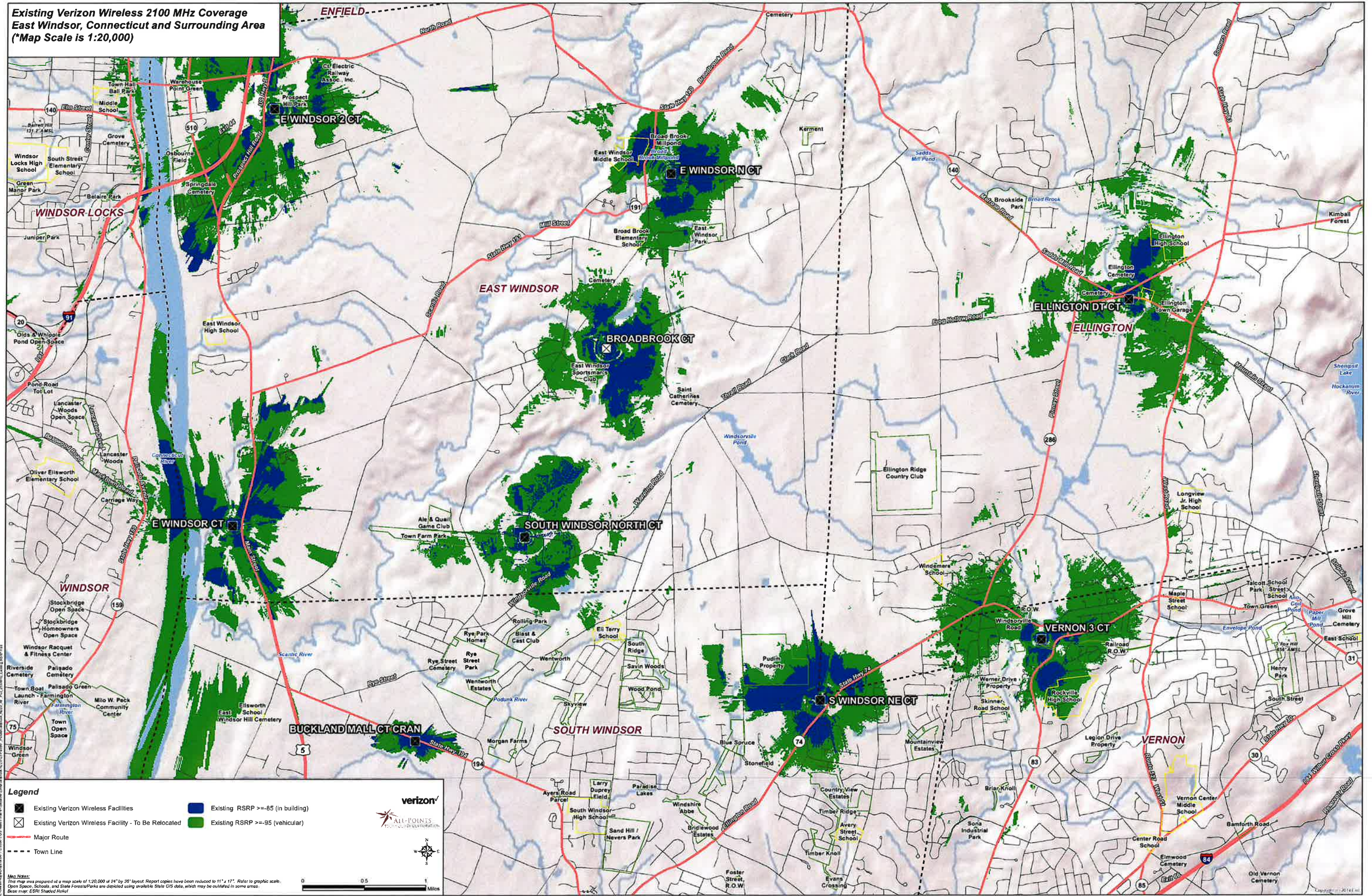
Legend

- Proposed Verizon Wireless Facility
- Existing and Proposed RSRP >= -85 (in building)
- Existing Verizon Wireless Facilities
- Existing and Proposed RSRP >= -95 (vehicular)
- Major Route
- - - Town Line

Map Notes:
This map was prepared at a map scale of 1:20,000 at 24" by 36" layout. Report copies have been reduced to 11" x 17". Refer to graphic scale.
Open Spaces, Schools, and State Forests/Parks are depicted using available State GIS data, which may be outdated in some areas.
Base map: ESRI Shaded Relief

verizon
ALL-POINTS
TOPICAL COMMUNICATIONS

**Existing Verizon Wireless 2100 MHz Coverage
East Windsor, Connecticut and Surrounding Area
(*Map Scale is 1:20,000)**



Legend

- Existing Verizon Wireless Facilities
- Existing Verizon Wireless Facility - To Be Relocated
- Major Route
- Town Line
- Existing RSRP >= -85 (in building)
- Existing RSRP >= -95 (vehicular)

Verizon
ALL-POINTS
COVERAGE INFORMATION

Map Notes:
This map was prepared at a map scale of 1:20,000 at 11" x 35" layout. Report copies have been reduced to 11" x 17". Refer to graphic scale.
Open Space, Schools, and State Forests/Parks are denoted using available State GIS data, which may be outdated in some areas.
Base map: ESRI Shaded Relief

0 0.5 1
Miles