

EXHIBIT H

Photographic Simulation Package

Proposed Wireless Telecommunications Facility:

CT1207 South Windsor
99 Dart Hill Road
Windsor, CT 06074

- Balloon Test Conducted 11/15/22 at 155 feet
- Simulations at 165 feet

Package prepared by:

Virtual Site Simulations, LLC
24 Salt Pond Road
Suite C3
South Kingstown, Rhode Island 02879

www.VirtualSiteSimulations.com
www.ThinkVSSFirst.com

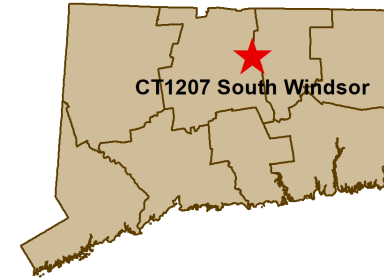
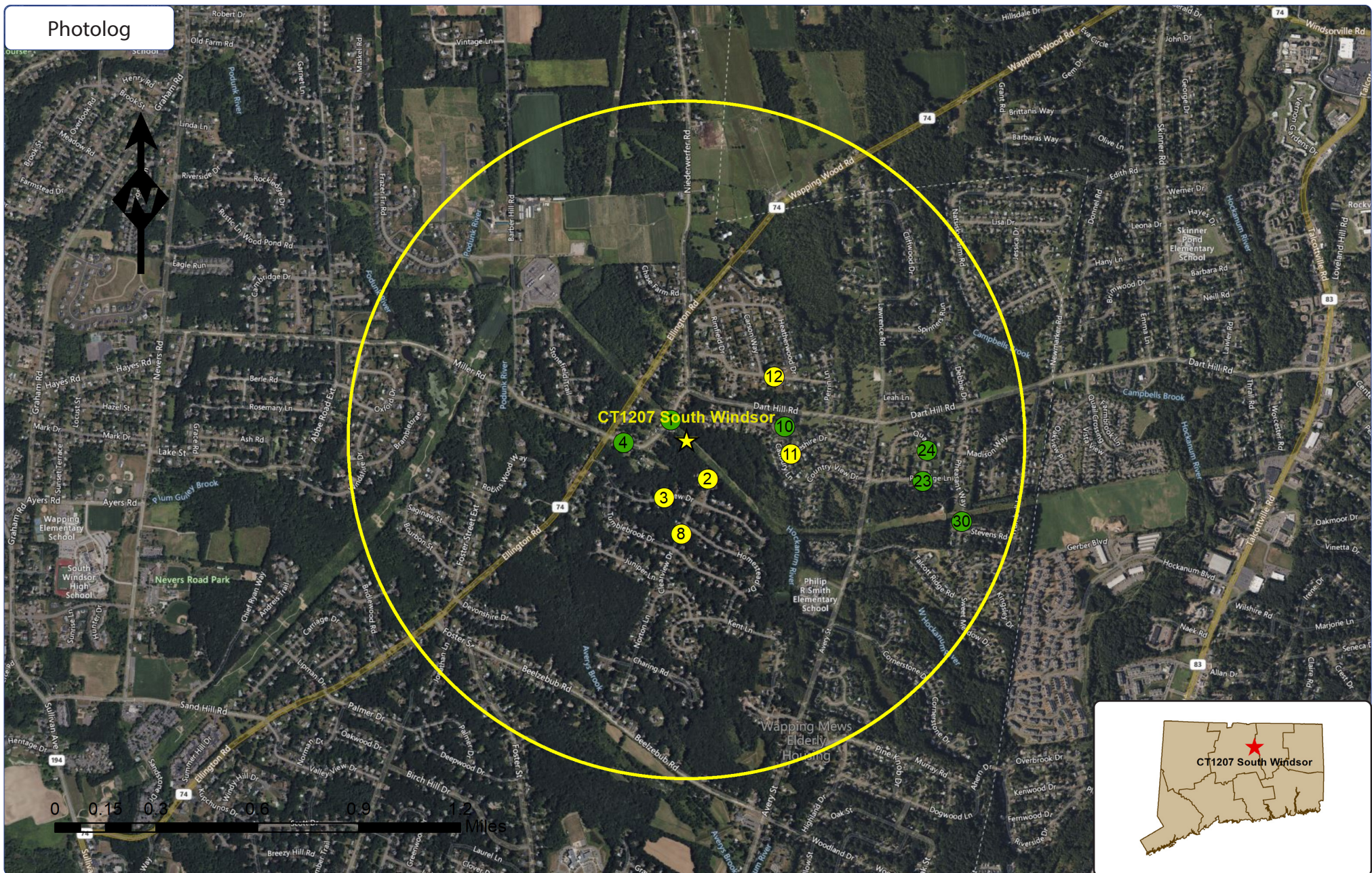


Photo Simulations are for demonstration purposes only. It should not be used in any other fashion or with any other intent. The accuracy of the resulting data is not guaranteed and is not for redistribution





Wireless Telecommunications Facility:

CT1207 South Windsor
99 Dart Hill Road
Windsor, CT 06074

Legend:

- ★ Facility Location
- 1 Mile Radius
- ⓧ Photo location-Year Round Visibility
- ⓪ Photo location - Obscured Visibility
- ⓧ Photo location - NOT visible

Photo Simulations are for demonstration purposes only. It should not be used in any other fashion or with any other intent. The accuracy of the resulting data is not guaranteed and is not for redistribution



Existing



Photo #	Approximate Location	Gps Coordinates		Distance to site	Orientation	Bearing to site	Visibility
1	Dart Hill Rd	41.84854	-72.5212	397.63 Feet	North-West	142	Year Round

Site: CT1207 South Windsor

Photo Simulations are for demonstration purposes only. It should not be used in any other fashion or with any other intent. The accuracy of the resulting data is not guaranteed and is not for redistribution





Photo #	Approximate Location	Gps Coordinates		Distance to site	Orientation	Bearing to site	Visibility
1	Dart Hill Rd	41.84854	-72.5212	397.63 Feet	North-West	142	Year Round

Site: CT1207 South Windsor

Photo Simulations are for demonstration purposes only. It should not be used in any other fashion or with any other intent. The accuracy of the resulting data is not guaranteed and is not for redistribution



Existing



Photo #	Approximate Location	Gps Coordinates		Distance to site	Orientation	Bearing to site	Visibility
2	Mara Trail	41.84602	-72.5191	0.13 Miles	South-East	332	Obscured

Site: CT1207 South Windsor

Photo Simulations are for demonstration purposes only. It should not be used in any other fashion or with any other intent. The accuracy of the resulting data is not guaranteed and is not for redistribution





Photo #	Approximate Location	Gps Coordinates		Distance to site	Orientation	Bearing to site	Visibility
2	Mara Trail	41.84602	-72.5191	0.13 Miles	South-East	332	Obscured

Site: CT1207 South Windsor

Photo Simulations are for demonstration purposes only. It should not be used in any other fashion or with any other intent. The accuracy of the resulting data is not guaranteed and is not for redistribution



Existing



Photo #	Approximate Location	Gps Coordinates		Distance to site	Orientation	Bearing to site	Visibility
3	Fairview Dr	41.84522	-72.5216	0.18 Miles	South	21	Obscured

Site: CT1207 South Windsor

Photo Simulations are for demonstration purposes only. It should not be used in any other fashion or with any other intent. The accuracy of the resulting data is not guaranteed and is not for redistribution





Photo #	Approximate Location	Gps Coordinates		Distance to site	Orientation	Bearing to site	Visibility
3	Fairview Dr	41.84522	-72.5216	0.18 Miles	South	21	Obscured

Site: CT1207 South Windsor

Photo Simulations are for demonstration purposes only. It should not be used in any other fashion or with any other intent. The accuracy of the resulting data is not guaranteed and is not for redistribution



Existing



Photo #	Approximate Location	Gps Coordinates		Distance to site	Orientation	Bearing to site	Visibility
4	Dart Hill Rd	41.84758	-72.5239	0.19 Miles	West	88	Year Round

Site: CT1207 South Windsor

Photo Simulations are for demonstration purposes only. It should not be used in any other fashion or with any other intent. The accuracy of the resulting data is not guaranteed and is not for redistribution





Photo #	Approximate Location	Gps Coordinates		Distance to site	Orientation	Bearing to site	Visibility
4	Dart Hill Rd	41.84758	-72.5239	0.19 Miles	West	88	Year Round

Site: CT1207 South Windsor

Photo Simulations are for demonstration purposes only. It should not be used in any other fashion or with any other intent. The accuracy of the resulting data is not guaranteed and is not for redistribution



Existing



Photo #	Approximate Location	Gps Coordinates		Distance to site	Orientation	Bearing to site	Visibility
8	Clearview Dr	41.84367	-72.5206	0.28 Miles	South	3	Obscured

Site: CT1207 South Windsor

Photo Simulations are for demonstration purposes only. It should not be used in any other fashion or with any other intent. The accuracy of the resulting data is not guaranteed and is not for redistribution



Your Visual Data Partner





Photo #	Approximate Location	Gps Coordinates		Distance to site	Orientation	Bearing to site	Visibility
8	Clearview Dr	41.84367	-72.5206	0.28 Miles	South	3	Obscured

Site: CT1207 South Windsor

Photo Simulations are for demonstration purposes only. It should not be used in any other fashion or with any other intent. The accuracy of the resulting data is not guaranteed and is not for redistribution



Your Visual Data Partner



Existing



Photo #	Approximate Location	Gps Coordinates		Distance to site	Orientation	Bearing to site	Visibility
10	Cadbury Ln	41.84826	-72.51468	0.29 Miles	East	262	Year Round

Site: CT1207 South Windsor

Photo Simulations are for demonstration purposes only. It should not be used in any other fashion or with any other intent. The accuracy of the resulting data is not guaranteed and is not for redistribution





Photo #	Approximate Location	Gps Coordinates		Distance to site	Orientation	Bearing to site	Visibility
10	Cadbury Ln	41.84826	-72.51468	0.29 Miles	East	262	Year Round

Site: CT1207 South Windsor

Photo Simulations are for demonstration purposes only. It should not be used in any other fashion or with any other intent. The accuracy of the resulting data is not guaranteed and is not for redistribution



Existing



Photo #	Approximate Location	Gps Coordinates		Distance to site	Orientation	Bearing to site	Visibility
11	Cheshire Dr	41.84707	-72.51432	0.31 Miles	East	278	Obscured

Site: CT1207 South Windsor

Photo Simulations are for demonstration purposes only. It should not be used in any other fashion or with any other intent. The accuracy of the resulting data is not guaranteed and is not for redistribution



Simulation

Simulation at 165 ft



Photo #	Approximate Location	Gps Coordinates		Distance to site	Orientation	Bearing to site	Visibility
11	Cheshire Dr	41.84707	-72.51432	0.31 Miles	East	278	Obscured

Site: CT1207 South Windsor

Photo Simulations are for demonstration purposes only. It should not be used in any other fashion or with any other intent. The accuracy of the resulting data is not guaranteed and is not for redistribution



Existing



Photo #	Approximate Location	Gps Coordinates		Distance to site	Orientation	Bearing to site	Visibility
12	Rimfield Dr	41.85039	-72.51528	0.32 Miles	North-East	234	Obscured

Site: CT1207 South Windsor

Photo Simulations are for demonstration purposes only. It should not be used in any other fashion or with any other intent. The accuracy of the resulting data is not guaranteed and is not for redistribution





Photo #	Approximate Location	Gps Coordinates		Distance to site	Orientation	Bearing to site	Visibility
12	Rimfield Dr	41.85039	-72.51528	0.32 Miles	North-East	234	Obscured

Site: CT1207 South Windsor

Photo Simulations are for demonstration purposes only. It should not be used in any other fashion or with any other intent. The accuracy of the resulting data is not guaranteed and is not for redistribution



Existing



Photo #	Approximate Location	Gps Coordinates		Distance to site	Orientation	Bearing to site	Visibility
23	Partridge Ln	41.8459	-72.5068	0.71 Miles	East	280	Year Round

Site: CT1207 South Windsor

Photo Simulations are for demonstration purposes only. It should not be used in any other fashion or with any other intent. The accuracy of the resulting data is not guaranteed and is not for redistribution



Your Visual Data Partner





Photo #	Approximate Location	Gps Coordinates		Distance to site	Orientation	Bearing to site	Visibility
23	Partridge Ln	41.8459	-72.5068	0.71 Miles	East	280	Year Round

Site: CT1207 South Windsor

Photo Simulations are for demonstration purposes only. It should not be used in any other fashion or with any other intent. The accuracy of the resulting data is not guaranteed and is not for redistribution



Your Visual Data Partner



Existing



Photo #	Approximate Location	Gps Coordinates		Distance to site	Orientation	Bearing to site	Visibility
24	Quail Run	41.84721	-72.50653	0.71 Miles	East	273	Year Round

Site: CT1207 South Windsor

Photo Simulations are for demonstration purposes only. It should not be used in any other fashion or with any other intent. The accuracy of the resulting data is not guaranteed and is not for redistribution





Photo #	Approximate Location	Gps Coordinates		Distance to site	Orientation	Bearing to site	Visibility
24	Quail Run	41.84721	-72.50653	0.71 Miles	East	273	Year Round

Site: CT1207 South Windsor

Photo Simulations are for demonstration purposes only. It should not be used in any other fashion or with any other intent. The accuracy of the resulting data is not guaranteed and is not for redistribution



Existing



Photo #	Approximate Location	Gps Coordinates		Distance to site	Orientation	Bearing to site	Visibility
30	Pheasant Way	41.84417	-72.50456	0.85 Miles	East	287	Year Round

Site: CT1207 South Windsor

Photo Simulations are for demonstration purposes only. It should not be used in any other fashion or with any other intent. The accuracy of the resulting data is not guaranteed and is not for redistribution





Photo #	Approximate Location	Gps Coordinates		Distance to site	Orientation	Bearing to site	Visibility
30	Pheasant Way	41.84417	-72.50456	0.85 Miles	East	287	Year Round

Site: CT1207 South Windsor

Photo Simulations are for demonstration purposes only. It should not be used in any other fashion or with any other intent. The accuracy of the resulting data is not guaranteed and is not for redistribution



Leaf-On 165' Viewshed Mapping Package



Proposed Wireless Telecommunications Facility:

CT1207 South Windsor
99 Dart Hill Road
Windsor, CT 06074

- Proposed new 165 ft AGL antenna structure
- Viewshed map updated 5/19/23
- Balloon test and viewshed verification completed 11/15/22

Package prepared by:

Virtual Site Simulations, LLC
24 Salt Pond Road
Suite C3
South Kingstown, Rhode Island 02879

www.VirtualSiteSimulations.com
www.ThinkVSSFirst.com

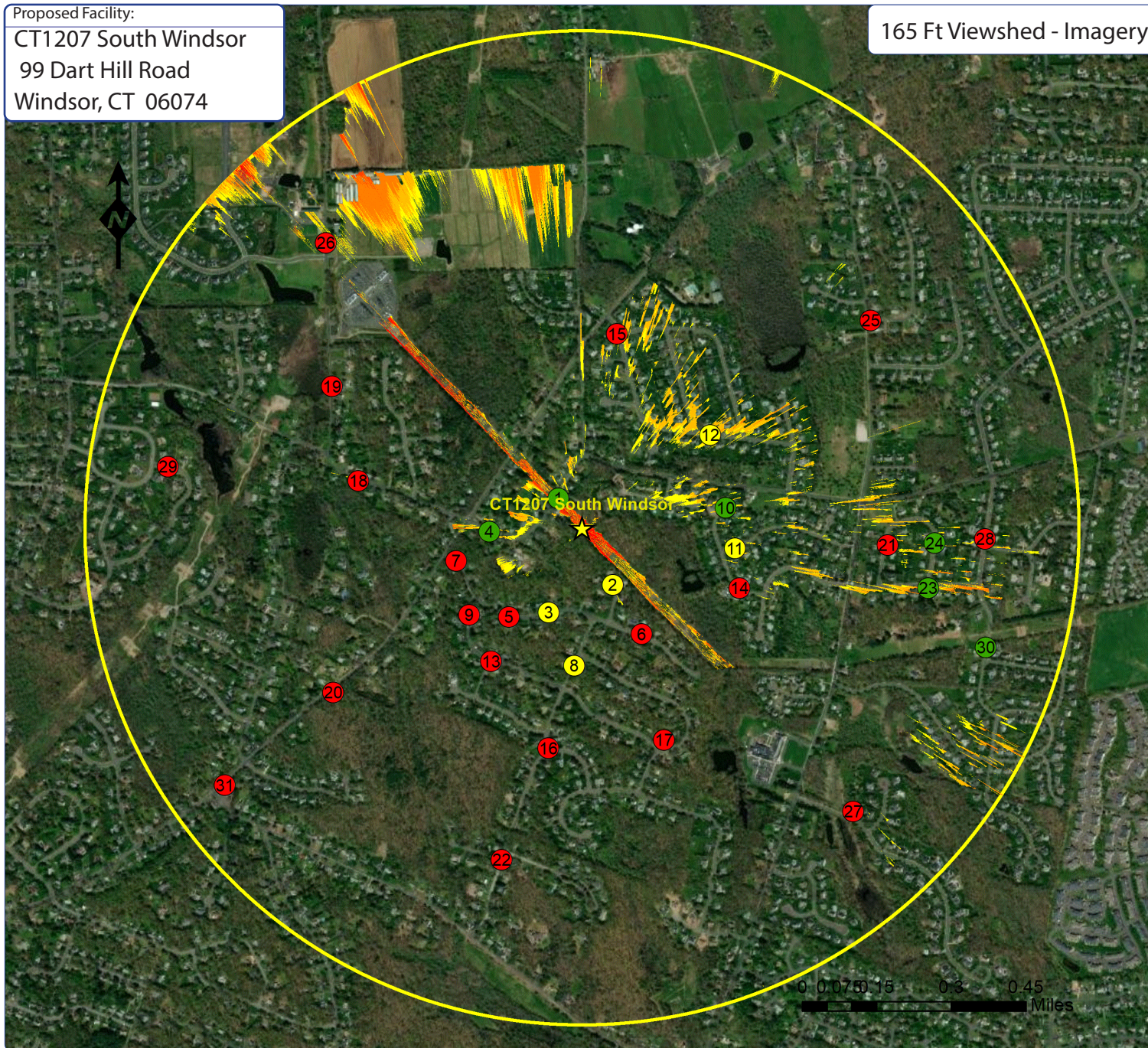
Viewshed analysis maps and representations contained herein depict where proposed facility may potentially be visible based on the best data available and site conditions at the time data was collected. This study does not claim to depict all locations from where the facility may be potentially visible.



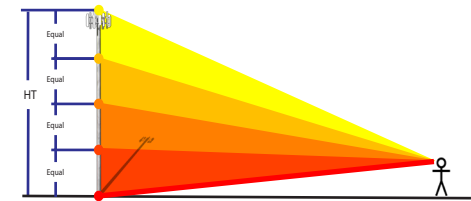
Proposed Facility:

CT1207 South Windsor
99 Dart Hill Road
Windsor, CT 06074

165 Ft Viewshed - Imagery



IVSview® Color Legend



★ Facility Location ○ 1 Mile Radius

- (X) Photo location - Balloon visible
- Year Round Visibility
- (X) Photo location - Balloon visible
- Obstructed Visibility
- (X) Photo location - Balloon NOT visible

Tower Visibility

Color	Location	% Vis	Acres
Yellow	Top 25%	1.08%	21.7
Orange	Top 50%	1.07%	21.6
Red	Top 75%	0.52%	10.4
Dark Red	Top 100%	0.14%	2.8
Red	Base	0.08%	1.5
TOTAL		2.89%	58.0 Acres

Statistics:

PROJ_DESC=Geographic (Lat/Long) / WGS84 / arc degrees
 PROJ_DATUM=WGS84 PROJ_UNITS=arc degrees
 PIXEL WIDTH=0.0000013 arc degrees (+/- .6 ft)
 PIXEL HEIGHT=0.0000014 arc degrees (+/- .6 ft)
 RADIUS (FT)= 1 Mile
 TRANSMITTER_HEIGHT (Ft-AGL)= 165
 RECEIVER_HEIGHT (Ft-AGL)= 5 Ft
 PERCENT_VISIBLE (%)= 2.89%

Notes:

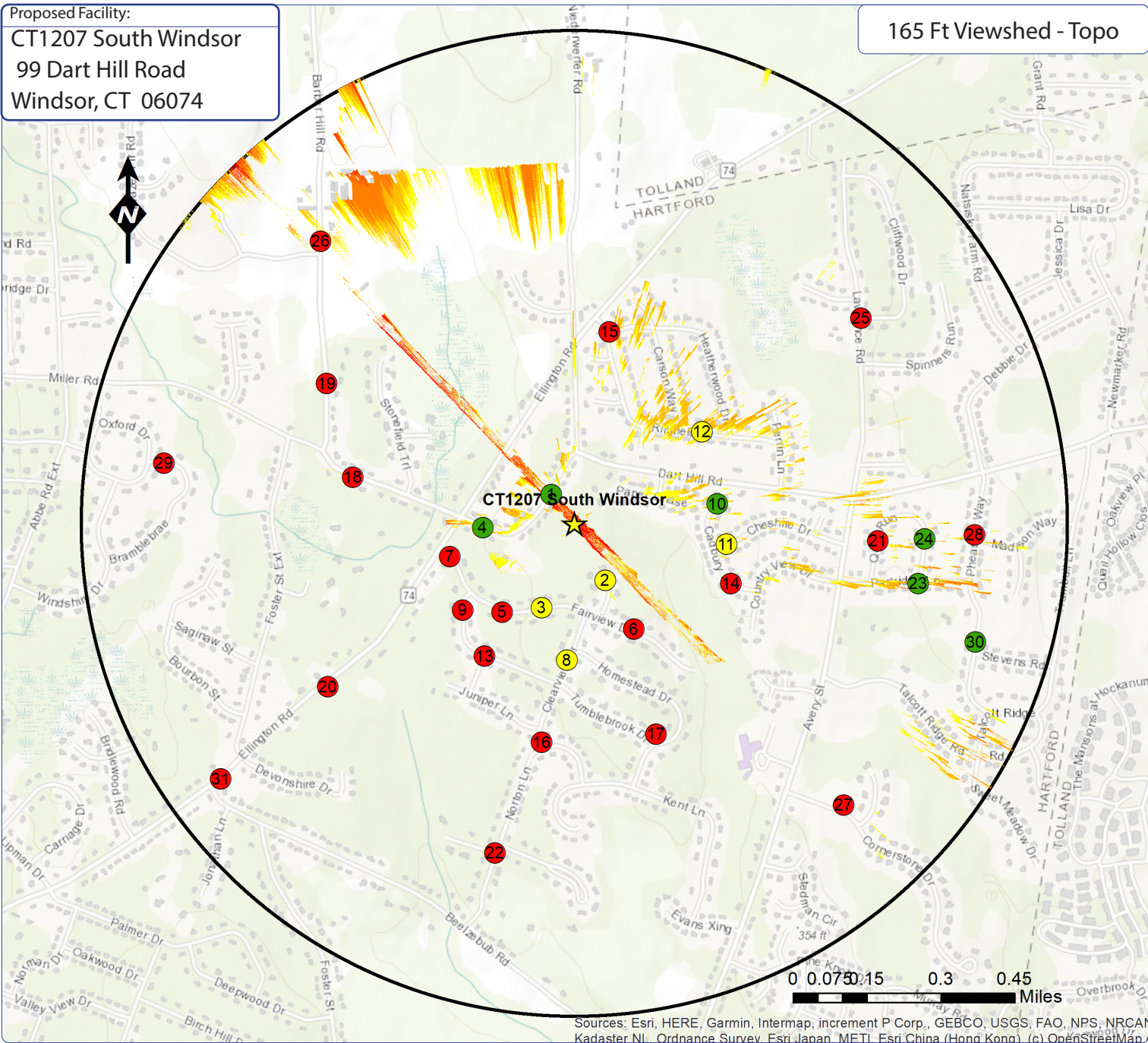
- map compiled by VSS, LLC on : 5/19/23
- Tower location(lat/long NAD 83): 41.847683 -72.5203
- Data Sources noted on documentation page attached

VSS-IVS- Interactive Viewshed Analysis output maps contained herein depict where proposed facility may potentially be visible based on the best and newest data publicly available at the time the data was collected. VSS does not claim to depict all locations from where the facility may potentially be visible and calculated output should be confirmed via site testing as needed.



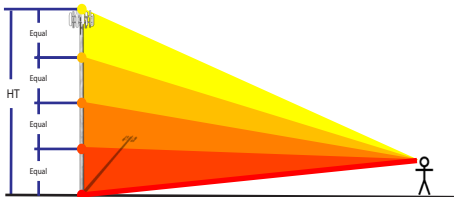
Proposed Facility:
CT1207 South Windsor
 99 Dart Hill Road
 Windsor, CT 06074

165 Ft Viewshed - Topo



Sources: Esri, HERE, Garmin, Intermap, increment P Corp., GEBCO, USGS, FAO, NPS, NRCAN, Kadaster NL, Ordnance Survey, Esri Japan, METI, Esri China (Hong Kong), (c) OpenStreetMap

IVSview® Color Legend



- ★ Facility Location ○ 1 Mile Radius
- ⊗ Photo location - Balloon visible
 - Year Round Visibility
- ⊗ Photo location - Balloon visible
 - Obstructed Visibility
- ⊗ Photo location - Balloon NOT visible

Tower Visibility			
Color	Location	% Vis	Acres
Yellow	Top 25%	1.08%	21.7
Orange	Top 50%	1.07%	21.6
Red	Top 75%	0.52%	10.4
Dark Red	Top 100%	0.14%	2.8
Dark Red	Base	0.08%	1.5
TOTAL		2.89%	58.0 Acres

Statistics:

PROJ_DESC=Geographic (Lat/Long) / WGS84 / arc degrees
 PROJ_DATUM=WGS84 PROJ_UNITS=arc degrees
 PIXEL WIDTH=0.0000013 arc degrees (+/- .6 ft)
 PIXEL HEIGHT=0.0000014 arc degrees (+/- .6 ft)
 RADIUS (FT)= 1 Mile
 TRANSMITTER_HEIGHT (Ft-AGL)= 165
 RECEIVER_HEIGHT (Ft-AGL)= 5 Ft
 PERCENT_VISIBLE (%)= 2.89%

Notes:

- map compiled by VSS, LLC on : 5/19/23
- Tower location(lat/long NAD 83): 41.847683 -72.5203
- Data Sources noted on documentation page attached



VSS-IVS- Interactive Viewshed Analysis output maps contained herein depict where proposed facility may potentially be visible based on the best and newest data publicly available at the time the data was collected. VSS does not claim to depict all locations from where the facility may potentially be visible and calculated output should be confirmed via site testing as needed.



Leaf-Off 165' Viewshed Mapping Package



Proposed Wireless Telecommunications Facility:

CT1207 South Windsor
99 Dart Hill Road
Windsor, CT 06074

- Proposed new 165 ft AGL antenna structure
- Viewshed map updated 5/19/23
- Balloon test and viewshed verification completed 11/15/22

Package prepared by:

Virtual Site Simulations, LLC
24 Salt Pond Road
Suite C3
South Kingstown, Rhode Island 02879

www.VirtualSiteSimulations.com
www.ThinkVSSFirst.com

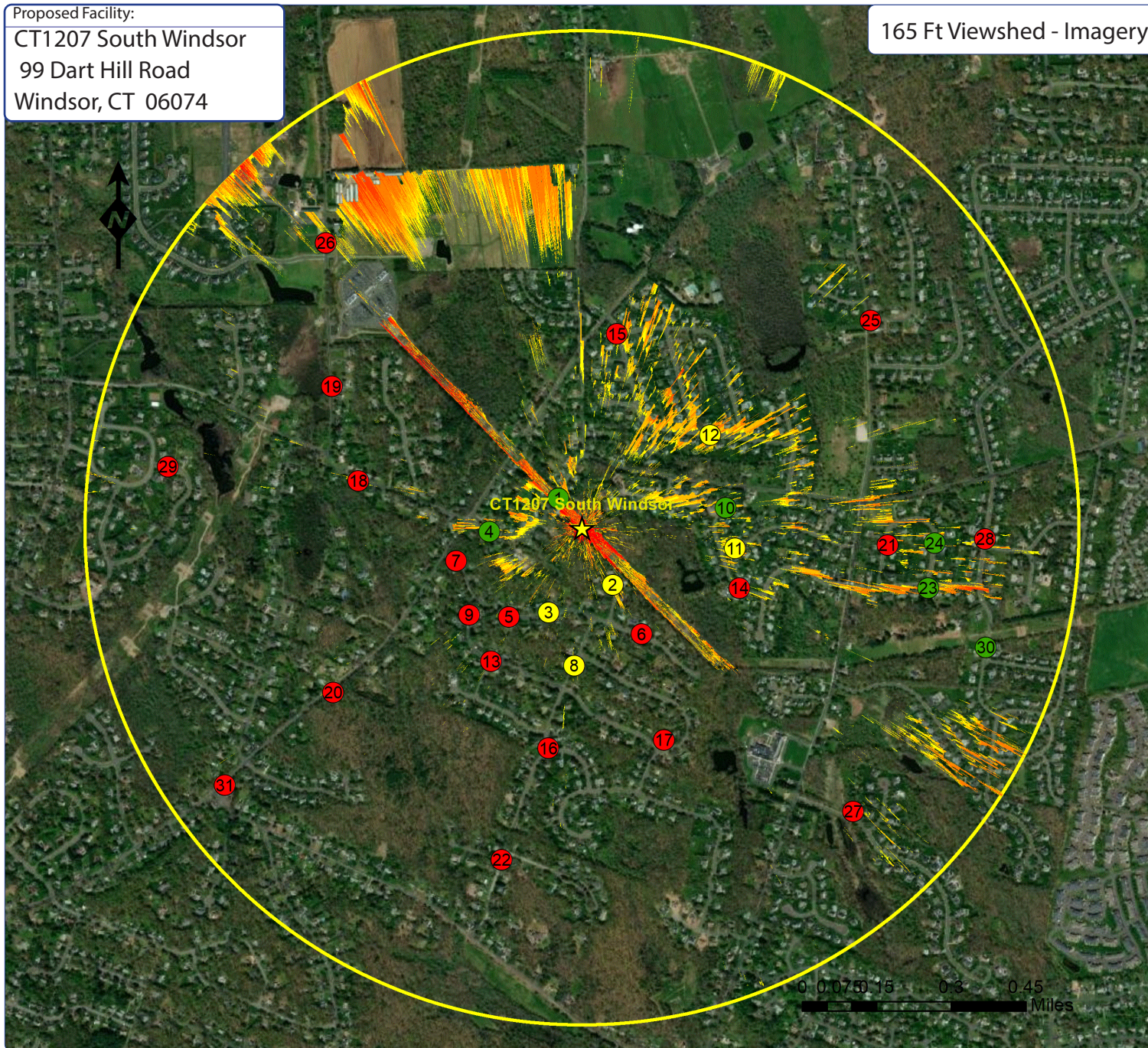
Viewshed analysis maps and representations contained herein depict where proposed facility may potentially be visible based on the best data available and site conditions at the time data was collected. This study does not claim to depict all locations from where the facility may be potentially visible.



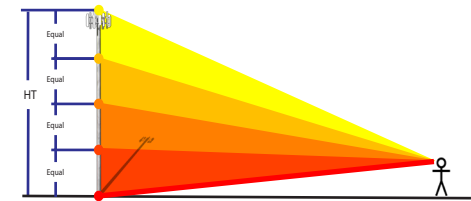
Proposed Facility:

CT1207 South Windsor
99 Dart Hill Road
Windsor, CT 06074

165 Ft Viewshed - Imagery



IVSview® Color Legend



★ Facility Location ○ 1 Mile Radius

- ⊗ Photo location - Balloon visible
- Year Round Visibility
- ⊗ Photo location - Balloon visible
- Obstructed Visibility
- ⊗ Photo location - Balloon NOT visible

Tower Visibility

Color	Location	% Vis	Acres
Yellow	Top 25%	1.40%	28.2
Orange	Top 50%	1.47%	29.7
Red	Top 75%	1.12%	22.6
Dark Red	Top 100%	0.28%	5.6
Red	Base	0.11%	2.2
TOTAL		4.39%	88.3 Acres

Statistics:

PROJ_DESC=Geographic (Lat/Long) / WGS84 / arc degrees
PROJ_DATUM=WGS84 PROJ_UNITS=arc degrees
PIXEL WIDTH=0.0000013 arc degrees (+/- .6 ft)
PIXEL HEIGHT=0.0000014 arc degrees (+/- .6 ft)
RADIUS (FT)= 1 Mile

TRANSMITTER_HEIGHT (Ft-AGL)= 165

RECEIVER_HEIGHT (Ft-AGL)= 5 Ft

PERCENT_VISIBLE (%)= 4.39%

Notes:

- map compiled by VSS, LLC on : 5/19/23
- Tower location(lat/long NAD 83): 41.847683 -72.5203
- Data Sources noted on documentation page attached

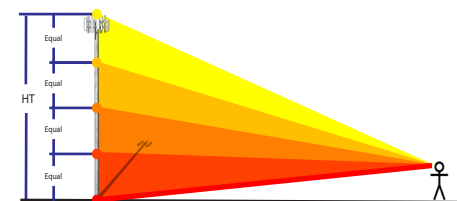
VSS-IVS- Interactive Viewshed Analysis output maps contained herein depict where proposed facility may potentially be visible based on the best and newest data publicly available at the time the data was collected. VSS does not claim to depict all locations from where the facility may potentially be visible and calculated output should be confirmed via site testing as needed.



Proposed Facility:
CT1207 South Windsor
99 Dart Hill Road
Windsor, CT 06074

165 Ft Viewshed - Topo

IVSview® Color Legend



★ Facility Location ○ 1 Mile Radius

- ⊗ Photo location - Balloon visible
- Year Round Visibility
- ⊗ Photo location - Balloon visible
- Obstructed Visibility
- ⊗ Photo location - Balloon NOT visible

Tower Visibility

Color	Location	% Vis	Acres
Yellow	Top 25%	1.40%	28.2
Orange	Top 50%	1.47%	29.7
Red	Top 75%	1.12%	22.6
Dark Red	Top 100%	0.28%	5.6
Red	Base	0.11%	2.2
TOTAL		4.39%	88.3 Acres

Statistics:

PROJ_DESC=Geographic (Lat/Long) / WGS84 / arc degrees
 PROJ_DATUM=WGS84 PROJ_UNITS=arc degrees
 PIXEL_WIDTH=0.0000013 arc degrees (+/- .6 ft)
 PIXEL_HEIGHT=0.0000014 arc degrees (+/- .6 ft)
 RADIUS (FT)= 1 Mile
 TRANSMITTER_HEIGHT (Ft-AGL)= 165
 RECEIVER_HEIGHT (Ft-AGL)= 5 Ft
 PERCENT_VISIBLE (%)= 4.39

Notes:

- map compiled by VSS, LLC on : 5/19/23
- Tower location(lat/long NAD 83): 41.847683 -72.5203
- Data Sources noted on documentation page attached



VSS-IVS- Interactive Viewshed Analysis output maps contained herein depict where proposed facility may potentially be visible based on the best and newest data publicly available at the time the data was collected. VSS does not claim to depict all locations from where the facility may potentially be visible and calculated output should be confirmed via site testing as needed.

