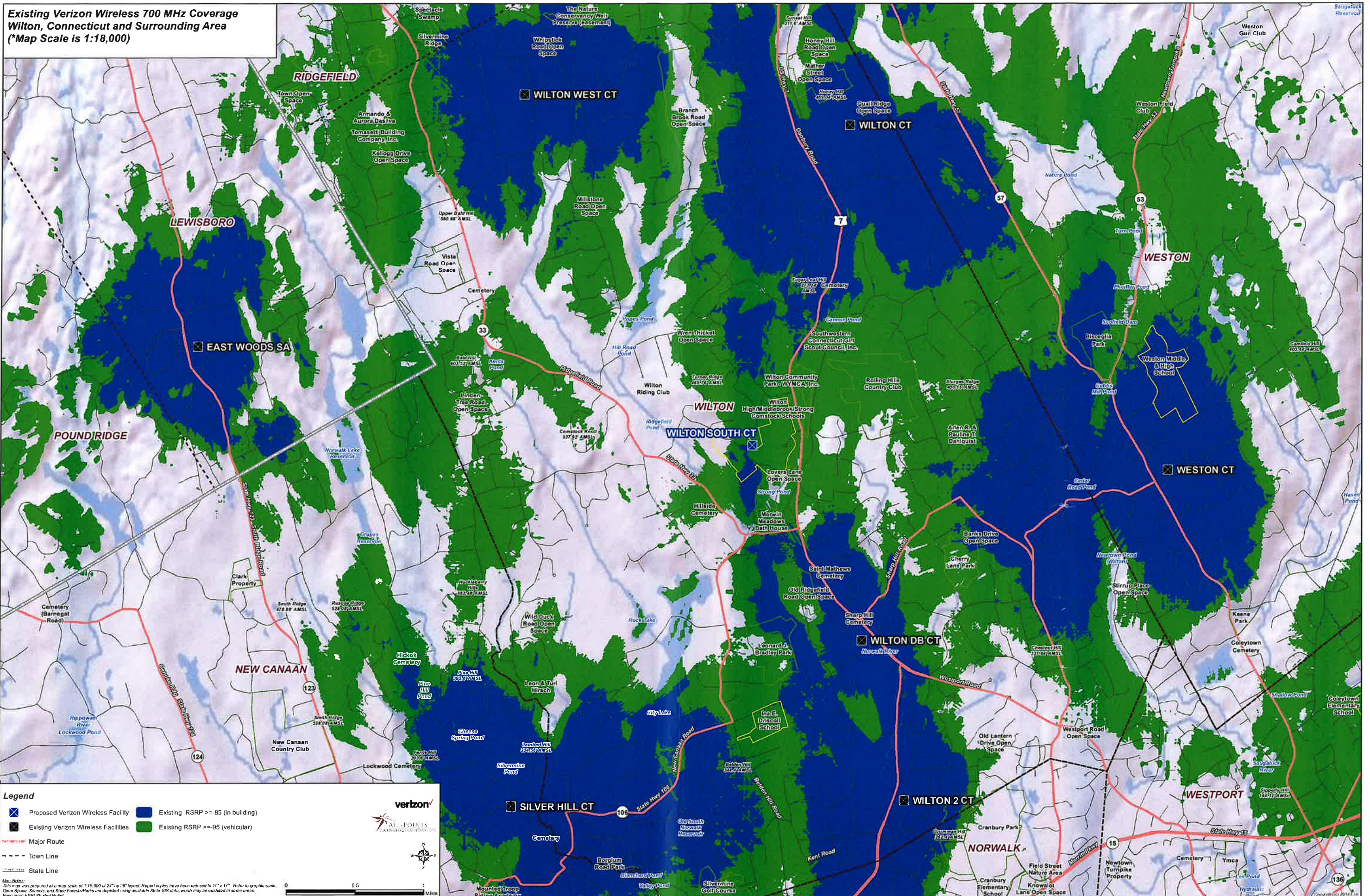


**Existing Verizon Wireless 700 MHz Coverage  
Wilton, Connecticut and Surrounding Area  
(\*Map Scale is 1:18,000)**



**Legend**

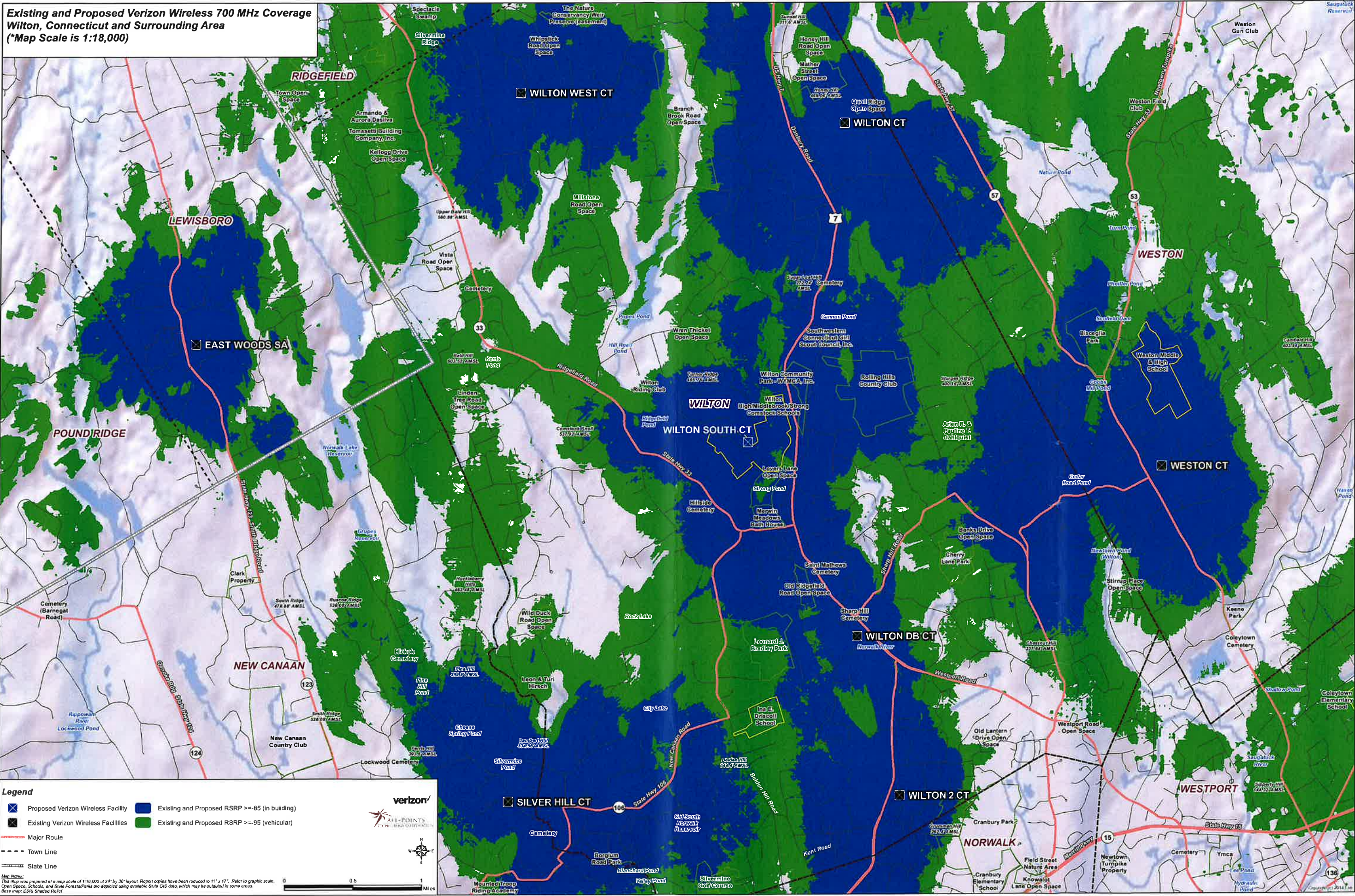
- X Proposed Verizon Wireless Facility
- Existing RSRP >= -85 (in building)
- Existing Verizon Wireless Facilities
- Existing RSRP >= -95 (vehicular)
- Major Route
- - - Town Line
- - - - State Line

**Map Notes:**  
This map was prepared at a map scale of 1:18,000 at 24" by 36" layout. Report copies have been reduced to 11" x 17". Refer to graphic scale. Open Space, Schools, and State Forest/Parks are depicted using available State GIS data, which may be outdated in some areas. Base map: ESRI Shaded Relief

**Verizon**  
ALL-POINTS  
TECHNOLOGY SOLUTIONS



**Existing and Proposed Verizon Wireless 700 MHz Coverage  
Wilton, Connecticut and Surrounding Area  
(\*Map Scale is 1:18,000)**



**Legend**

- Proposed Verizon Wireless Facility
- Existing and Proposed RSRP >= -85 (in building)
- Existing Verizon Wireless Facilities
- Existing and Proposed RSRP >= -95 (vehicular)
- Major Route
- - - Town Line
- State Line

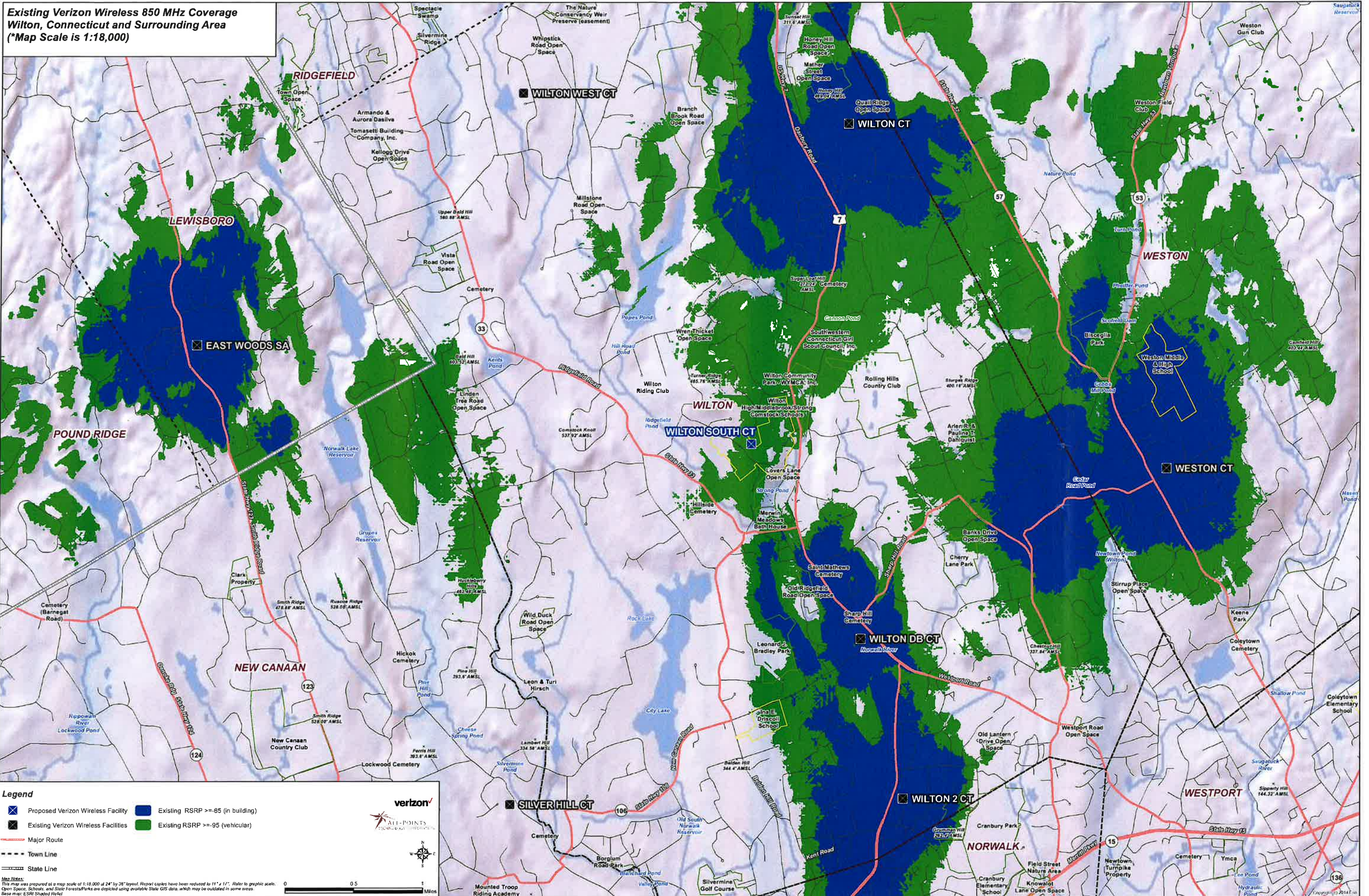
**Map Notes:**  
This map was prepared at a map scale of 1:18,000 at 24" by 36" layout. Report copies have been reduced to 11" x 17". Refer to graphic scale.  
Open Space, Schools, and State Forests/Parks are depicted using available State GIS data, which may be outdated in some areas.  
Base map: ESRI Shaded Relief

**Scale:** 0 0.5 1 Miles

**Verizon All-Points**



**Existing Verizon Wireless 850 MHz Coverage  
Wilton, Connecticut and Surrounding Area  
(\*Map Scale is 1:18,000)**



**Legend**

- Proposed Verizon Wireless Facility
- Existing RSRP >= -85 (in building)
- Existing Verizon Wireless Facilities
- Existing RSRP >= -95 (vehicular)
- Major Route
- - - Town Line
- State Line

**Map Notes:**  
This map was prepared at a map scale of 1:18,000 at 24" by 36" layout. Reprofit copies have been reduced to 11" x 17". Refer to graphic scale.  
Open Space, Schools and State Forests/Parks are depicted using available State GIS data, which may be outdated in some areas.  
Base map: ESRI Shaded Relief

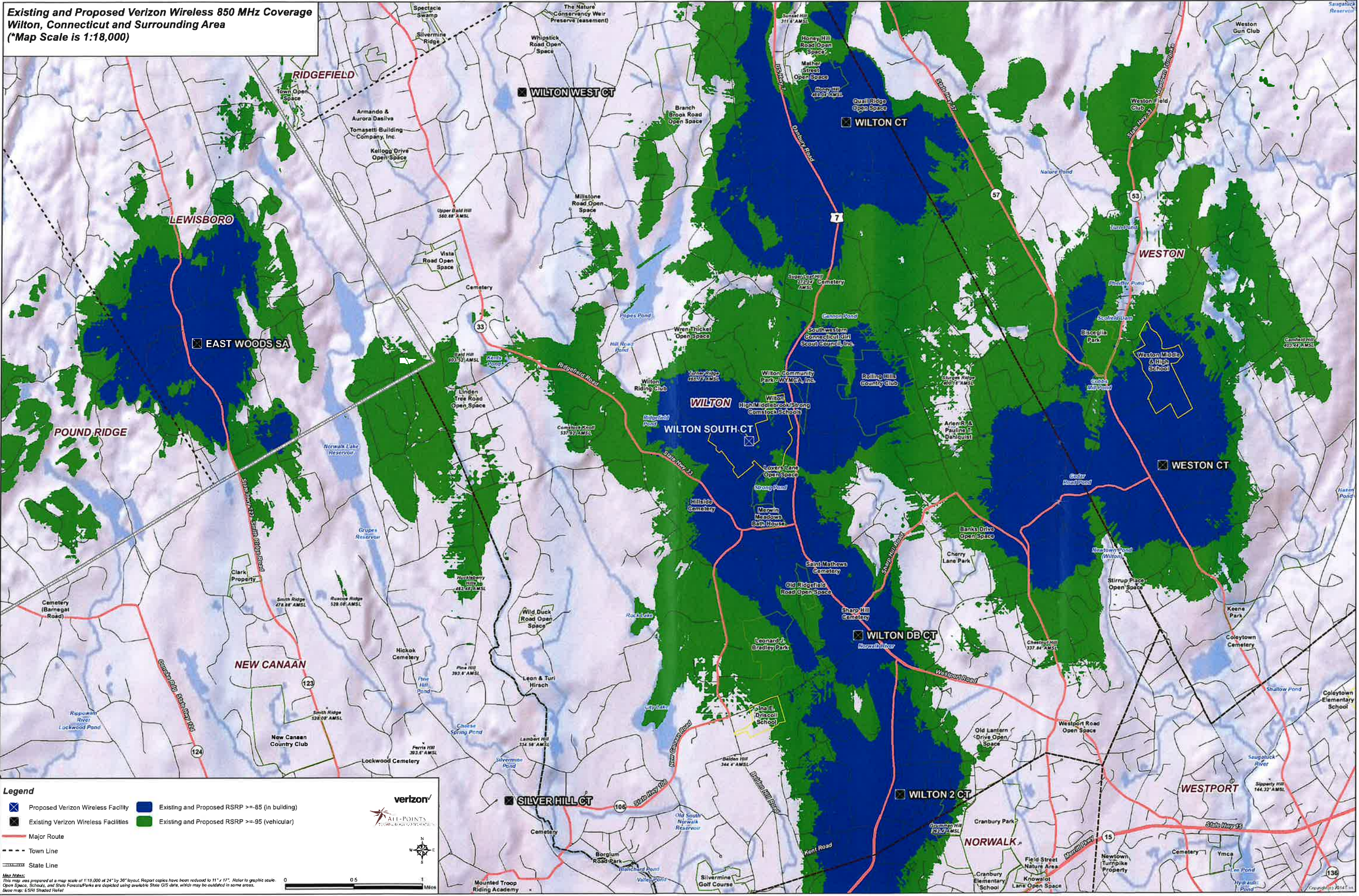
**Scale:** 0 0.5 1 Miles

**Logos:** verizon, ALL-POINTS COMMUNICATIONS

© 2014 Verizon Wireless. All rights reserved. This map is a service mark of Verizon Wireless. All other marks are the property of their respective owners.



**Existing and Proposed Verizon Wireless 850 MHz Coverage  
Wilton, Connecticut and Surrounding Area  
(\*Map Scale is 1:18,000)**



**Legend**

- Proposed Verizon Wireless Facility
- Existing and Proposed RSRP >= -85 (in building)
- Existing Verizon Wireless Facilities
- Existing and Proposed RSRP >= -95 (vehicular)
- Major Route
- - - Town Line
- = State Line

**Map Notes:**  
This map was prepared at a map scale of 1:18,000 at 24" by 36" layout. Report copies have been reduced to 11" x 17". Refer to graphic scale. Open Space, Schools, and State Forests/Parks are depicted using available State GIS data, which may be outdated in some areas. Base map: ESRI Street Partner

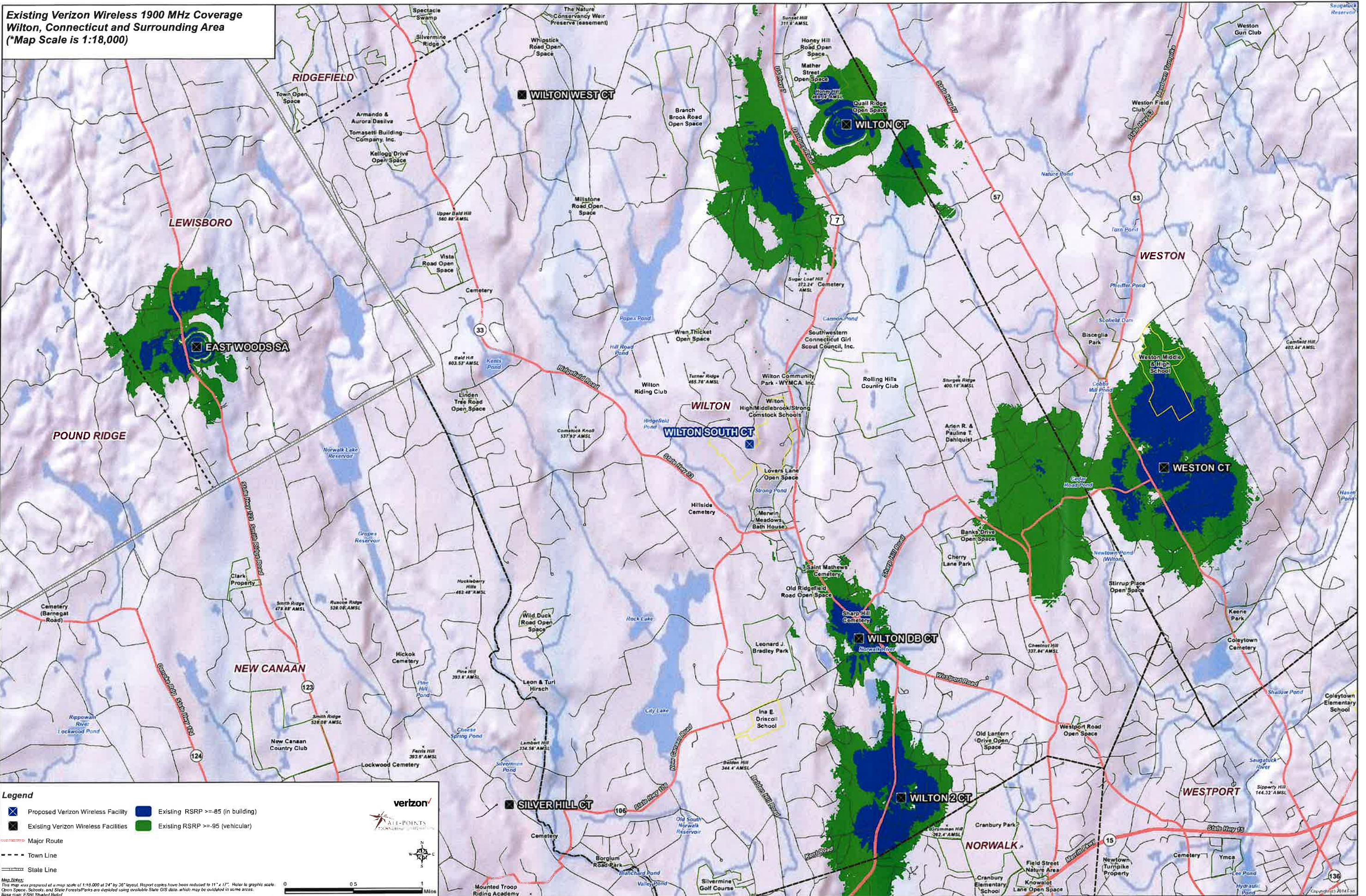
**Scale:** 0 0.5 1 Miles

**Verizon**  
All-Points  
COMMUNICATIONS CORPORATION

© 2014 Verizon Wireless. All rights reserved. Wilton, CT. P.O. Box 1000, Wilton, CT 06097.



**Existing Verizon Wireless 1900 MHz Coverage  
Wilton, Connecticut and Surrounding Area  
(\*Map Scale is 1:18,000)**



**Legend**

- Proposed Verizon Wireless Facility
- Existing Verizon Wireless Facilities
- Major Route
- Town Line
- State Line
- Existing RSRP >= -85 (in building)
- Existing RSRP >= -95 (vehicular)

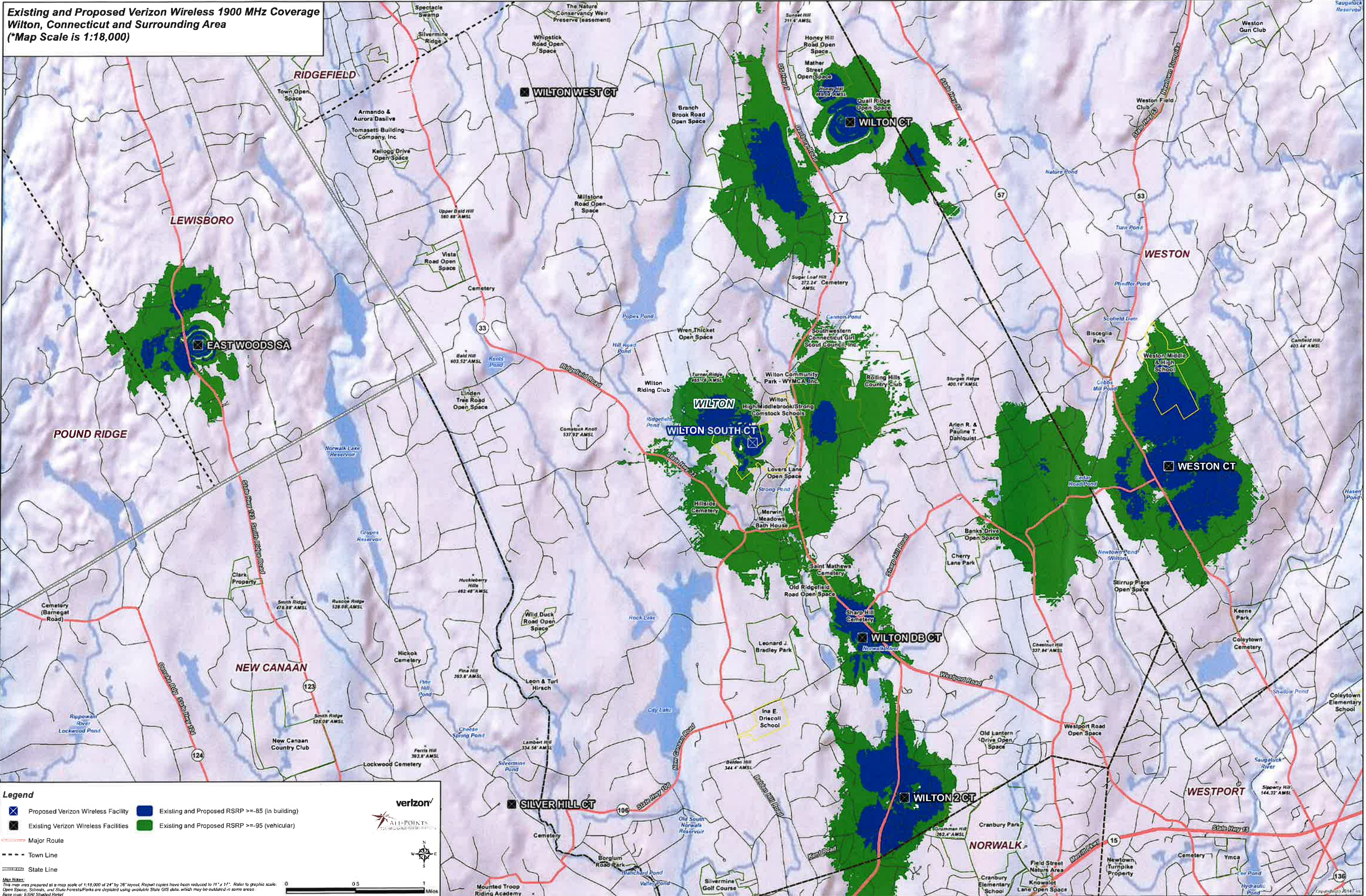
**Map Notes:**  
This map was prepared at a map scale of 1:18,000 at 24" by 36" layout. Report copies have been reduced to 11" x 17". Refer to graphic scale. Open Space, Schools, and State Forests/Parks are depicted using available State GIS data, which may be outdated in some areas. Base map: © 2011 Shaded Relief

**Scale:** 0 0.5 1 Miles

**Logos:** Verizon, All-Points Technology



**Existing and Proposed Verizon Wireless 1900 MHz Coverage  
Wilton, Connecticut and Surrounding Area  
(\*Map Scale is 1:18,000)**



**Legend**

- Proposed Verizon Wireless Facility
- Existing and Proposed RSRP >= -85 (in building)
- Existing Verizon Wireless Facilities
- Existing and Proposed RSRP >= -95 (vehicular)
- Major Route
- Town Line
- State Line

**verizon**

**ALL-POINTS**  
COMMUNICATIONS CORPORATION

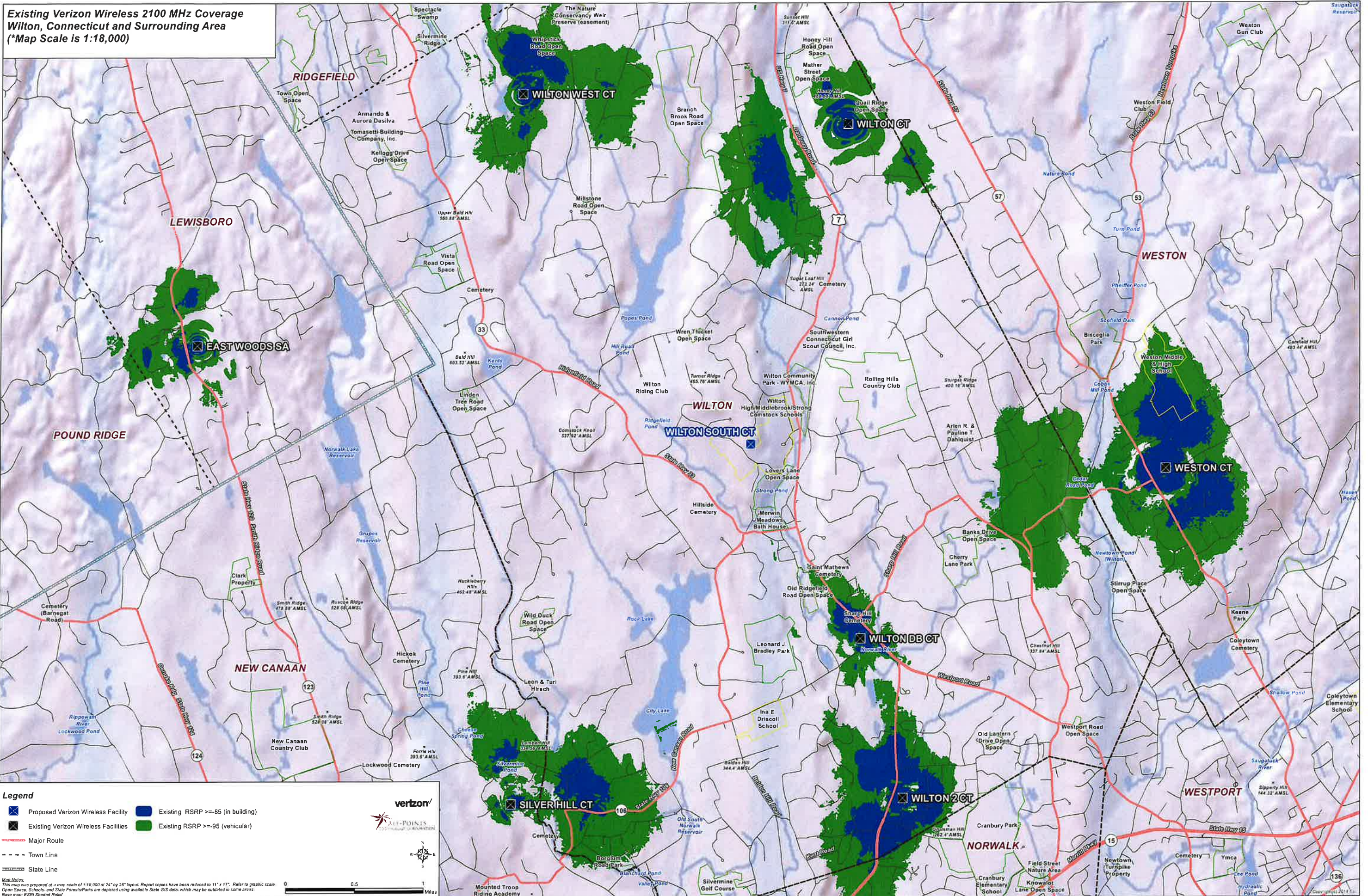
**Map Notes:**  
This map was prepared at a map scale of 1:18,000 at 24" by 36" layout. Report copies have been reduced to 11" x 17". Refer to graphic scale.  
Open Space, Schools, and State Forests/Parks are depicted using available State GIS data, which may be outdated in some areas.  
Base map: ESRI Shaded Relief

0 0.5 1 Miles

Copyright © 2014 Verizon Wireless. All rights reserved. Wilton, CT, 06097. This map is not to be used for any other purpose without the express written consent of Verizon Wireless. 10/14/14



**Existing Verizon Wireless 2100 MHz Coverage  
Wilton, Connecticut and Surrounding Area  
(\*Map Scale is 1:18,000)**



**Legend**

- Proposed Verizon Wireless Facility
- Existing Verizon Wireless Facilities
- Existing RSRP >= -85 (in building)
- Existing RSRP >= -95 (vehicular)
- Major Route
- - - - Town Line
- ==== State Line

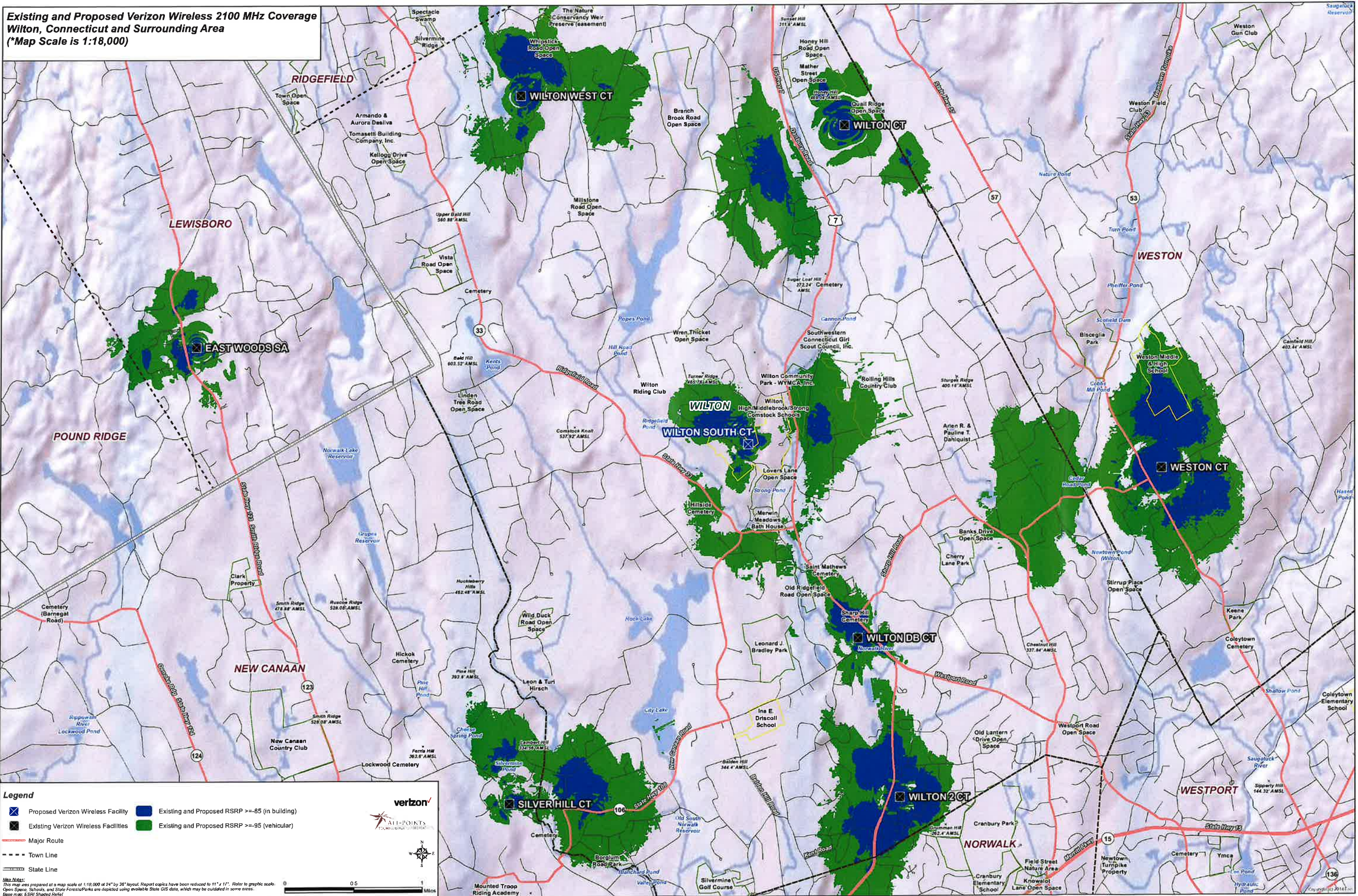
**Map Notes:**  
This map was prepared at a map scale of 1:18,000 at 24" by 36" layout. Report copies have been reduced to 11" x 17". Refer to graphic scale. Open Space, Schools, and State Forests/Parks are depicted using available State GIS data, which may be outdated in some areas. Base map: ESRI Shaded Relief

**Scale:** 0 0.5 1 Miles

**Logos:** verizon, ALL-POINTS TECHNOLOGY CORPORATION



**Existing and Proposed Verizon Wireless 2100 MHz Coverage  
Wilton, Connecticut and Surrounding Area  
(\*Map Scale is 1:18,000)**



**Legend**

- Proposed Verizon Wireless Facility
- Existing and Proposed RSRP >= -85 (in building)
- Existing Verizon Wireless Facilities
- Existing and Proposed RSRP >= -95 (vehicular)
- Major Route
- - - Town Line
- = State Line

**Verizon**  
ALL-POINTS  
COMMUNICATIONS

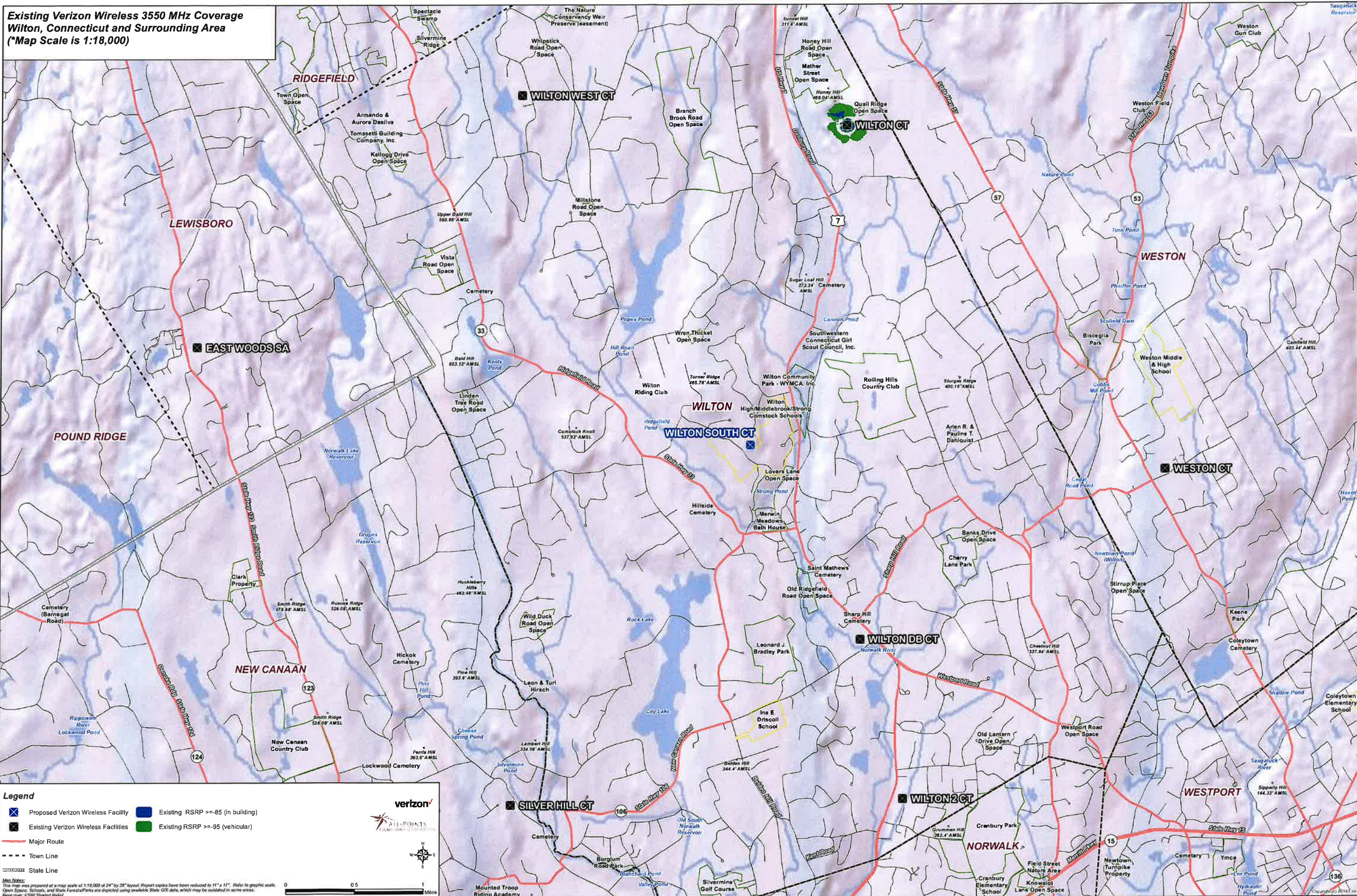
**Map Notes:**  
This map was prepared at a map scale of 1:18,000 at 24" by 36" layout. Report copies have been reduced to 11" x 17". Refer to graphic scale.  
Open Spaces, Schools, and State Forests/Parks are depicted using available State GIS data, which may be outdated in some areas.  
Base map: ESRI Shaded Relief

0 0.5 1  
Miles

© 2014 Verizon Wireless. All rights reserved. Wilton, CT. P: 201401. Project: 103274.



**Existing Verizon Wireless 3550 MHz Coverage  
Wilton, Connecticut and Surrounding Area  
(\*Map Scale is 1:18,000)**



**Legend**

- ✕ Proposed Verizon Wireless Facility
- Existing RSRP >= -85 (in building)
- ✕ Existing Verizon Wireless Facilities
- Existing RSRP >= -95 (vehicular)
- Major Route
- - - Town Line
- = State Line

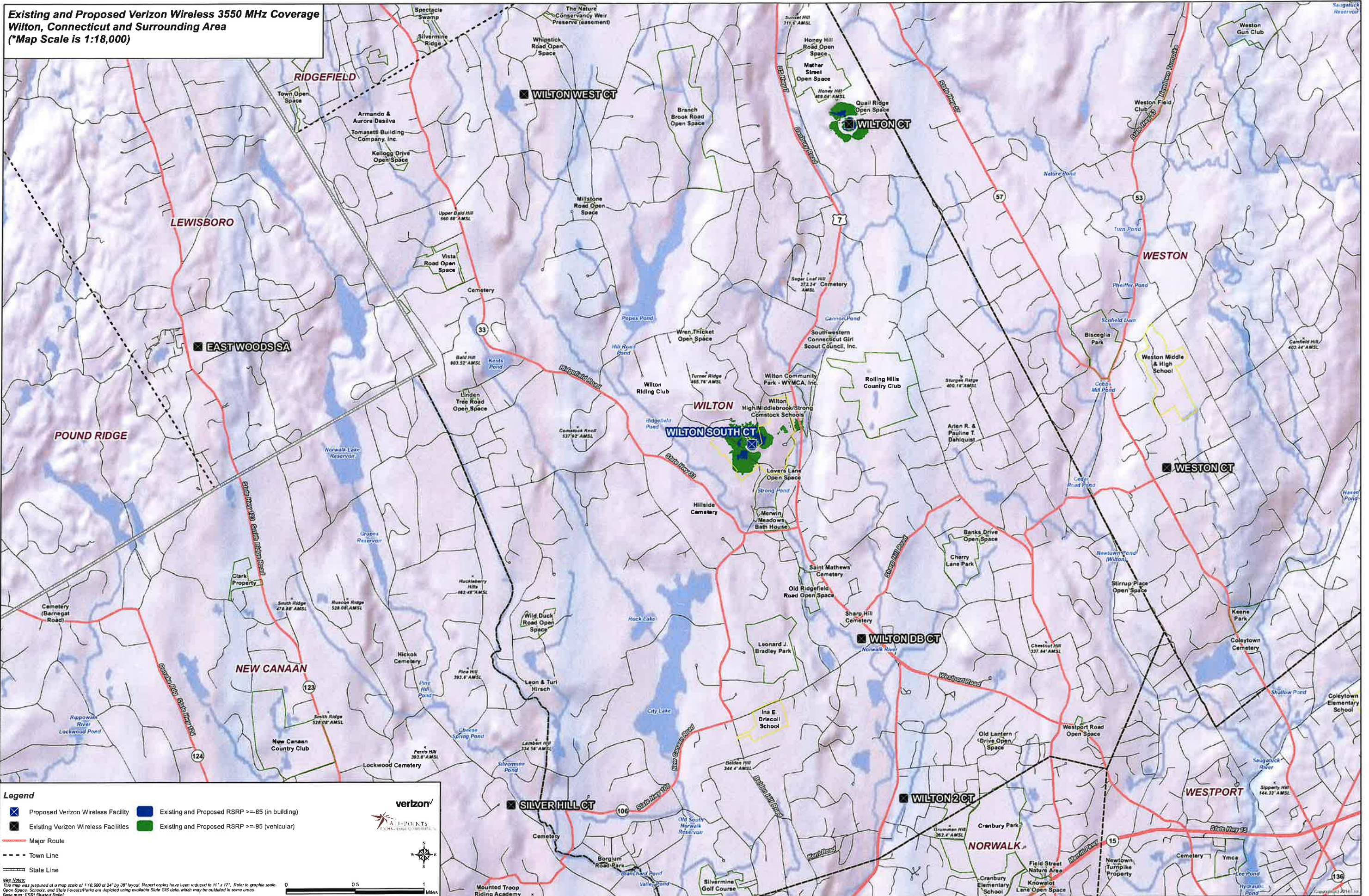
**Map Notes:**  
This map was prepared at a map scale of 1:18,000 at 24" by 36" layout. Report copies have been reduced to 11" x 17". Refer to graphic scale.  
Open Space, Schools, and State Forest/Parks are depicted using available State GIS data, which may be outdated in some areas.  
Base map: ESRI Shape Relief

**verizon**  
ALL-POINTS  
COMMUNICATIONS

0 0.5 1 Miles



**Existing and Proposed Verizon Wireless 3550 MHz Coverage  
Wilton, Connecticut and Surrounding Area  
(\*Map Scale is 1:18,000)**



**Legend**

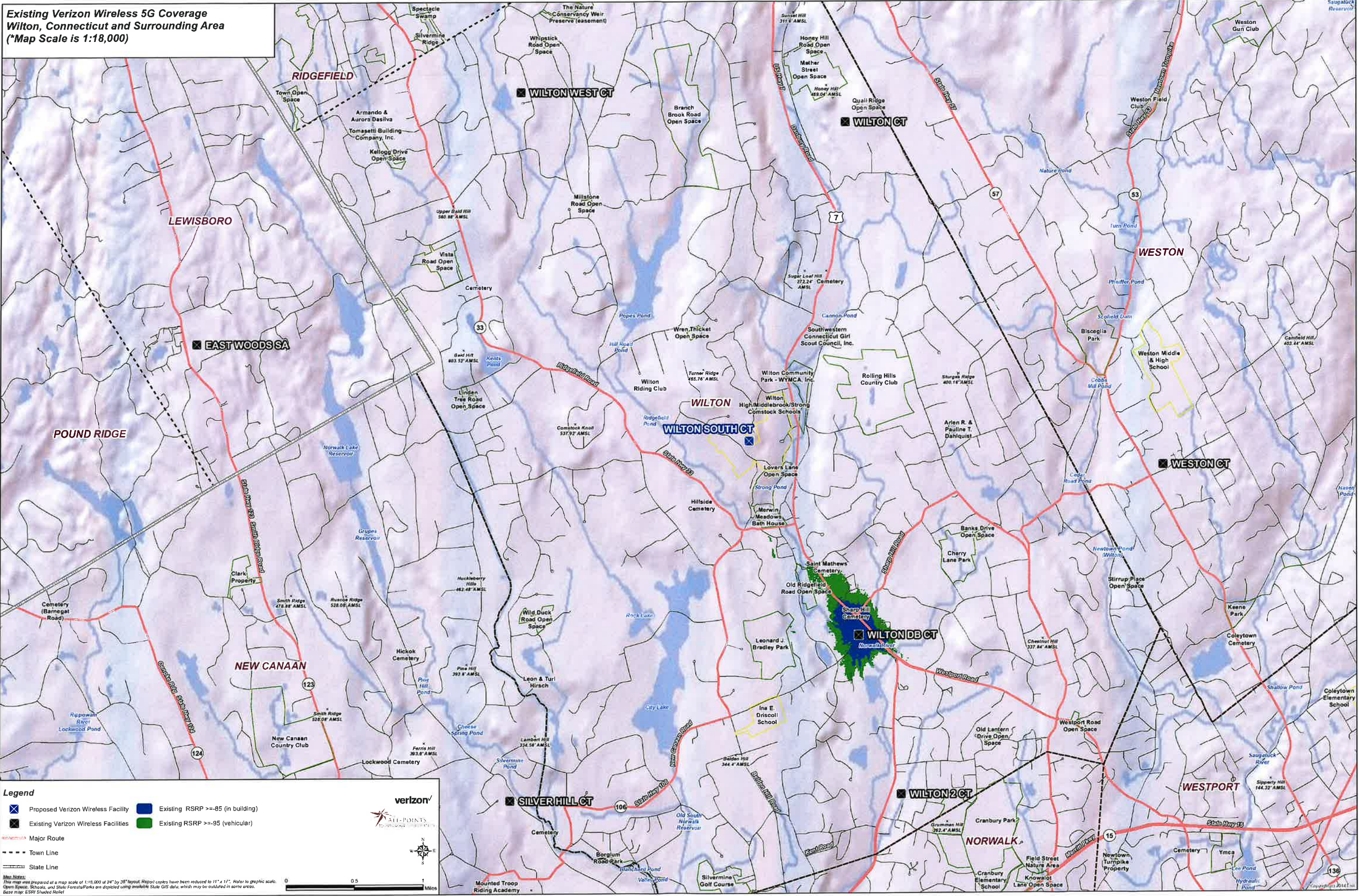
- Proposed Verizon Wireless Facility
- Existing and Proposed RSRP >= -85 (in building)
- Existing Verizon Wireless Facilities
- Existing and Proposed RSRP >= -85 (vehicular)
- Major Route
- - - Town Line
- = State Line

**Verizon**  
ALL-POINTS  
TECHNOLOGICAL CORPORATION

This map was prepared at a map scale of 1:18,000 at 24" by 36" layout. Report copies have been reduced to 11" x 17". Refer to graphic scale. Open Space, Schools, and State Forests/Parks are depicted using available State GIS data, which may be outdated in some areas. Base map: ESRI, StreetView



**Existing Verizon Wireless 5G Coverage  
Wilton, Connecticut and Surrounding Area  
(\*Map Scale is 1:18,000)**



**Legend**

- Proposed Verizon Wireless Facility
- Existing RSRP >= -85 (in building)
- Existing Verizon Wireless Facilities
- Existing RSRP >= -95 (vehicular)
- Major Route
- - - Town Line
- = State Line

**Verizon**  
All-Points  
Coverage

**Scale:** 0 0.5 1 Miles

This map was prepared at a map scale of 1:18,000 at 24" by 36" layout. Reproduct copies have been reduced to 11" x 17". Refer to graphic scale. Open Space, Schools, and State Forests/Parks are depicted using available State GIS data, which may be outdated in some areas. Base map: ESRI Shaded Relief



**Existing and Proposed Verizon Wireless 5G Coverage  
Wilton, Connecticut and Surrounding Area  
(\*Map Scale is 1:18,000)**

