



PRELIMINARY HISTORIC RESOURCES DETERMINATION

January 20, 2023

Verizon Wireless
20 Alexander Drive
Wallingford, Connecticut 06492

Re: Proposed Telecommunications Facility
180 School Road, Wilton, Connecticut

On behalf of Cellco Partnership, d/b/a Verizon Wireless ("Verizon Wireless"), All-Points Technology Corporation, P.C. ("APT") performed an evaluation with respect to the proposed Facility's potential effects on historic resources proximate to the referenced project site.

APT completed an independent review of the National Register of Historic Places ("NRHP") and SHPO files to determine if any listed sites, or sites eligible for listing, are located proximate to the Site. The results of our review revealed that one such resource is located within one-half mile of the site.¹ The Wilton Center Historic District, which is listed on the NRHP, is located approximately one-half mile south of the proposed site. A cultural resource screening map is provided as an attachment to this memorandum.

Based on viewshed modeling prepared by APT, no views of the Facility are anticipated from these resources. In addition, APT conducted a field test (using a brightly-colored flag attached to a crane boom at the site location raised to the height of the proposed Facility) and confirmed that no views will be experienced from the Wilton Center Historic District.

As part of its obligations for compliance with the National Environmental Policy Act ("NEPA"), Verizon Wireless will be submitting required documentation to the State Historic Preservation Office ("SHPO") for this agency's review and determination. The SHPO submission will be prepared by a qualified architectural historian who meets criteria developed by the Secretary of the Interior. That process has not yet been initiated.

Sincerely,

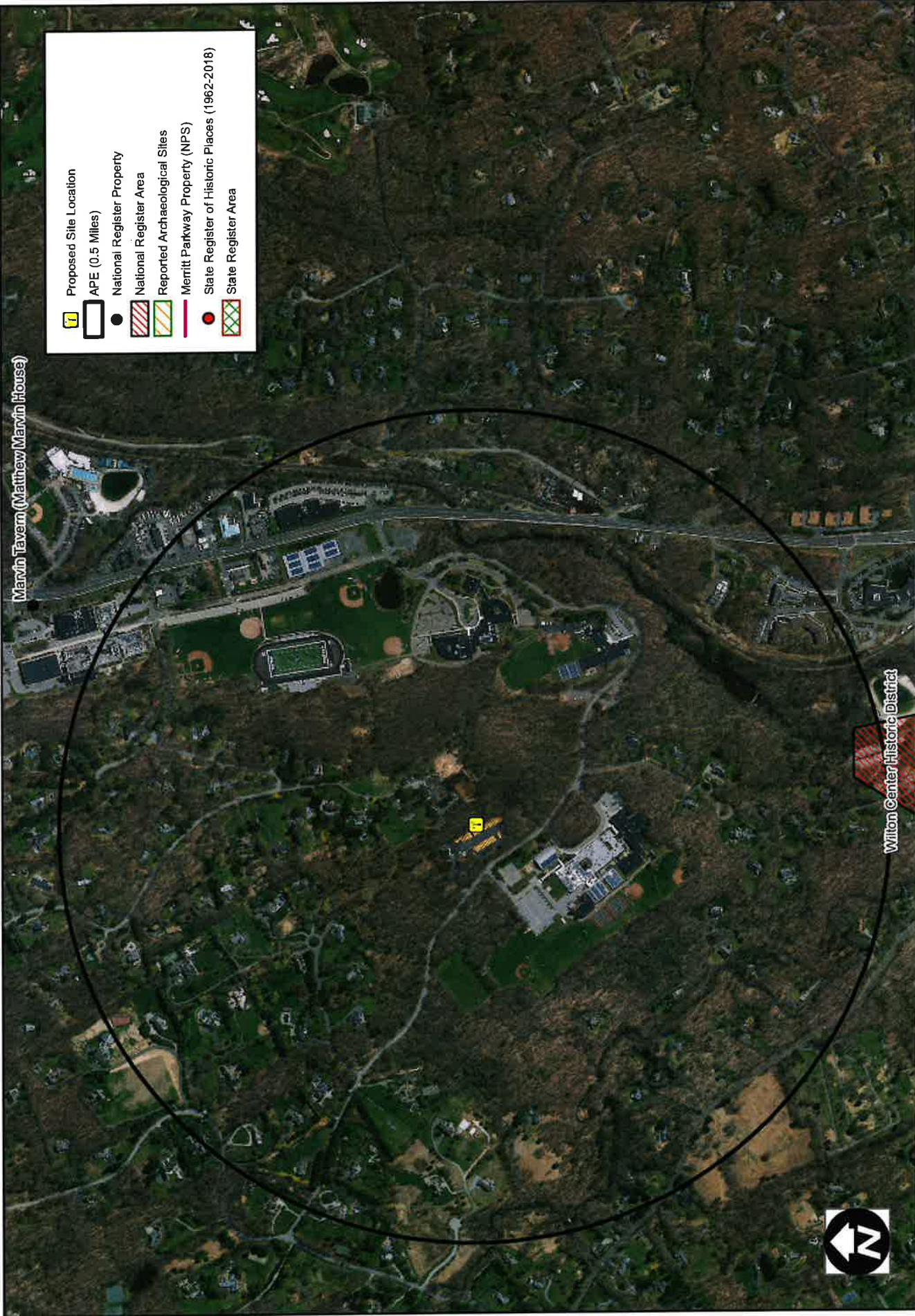
A handwritten signature in black ink that reads "Brian Gaudet".

Brian Gaudet
Project Manager

Attachment

¹ For towers under 200 feet tall, the Area of Potential Effect ("APE") has been established at 0.5 mile. This distance represents the APE established cooperatively by the Federal Communications Commission, Advisory Council on Historic Preservation and the National Conference of State Historic Preservation Officers.

Cultural Resource Screening Map



Marvin Tavern (Matthew Marvin House)

Wilton Center Historic District

- Proposed Site Location
- APE (0.5 Miles)
- National Register Property
- National Register Area
- Reported Archaeological Sites
- Merritt Parkway Property (NPS)
- State Register of Historic Places (1962-2018)
- State Register Area

Cultural Resources Screen
CT14113400 - Wilton 180 School Road Wilton, CT
 March 10, 2023 \ USGS QUAD: Norwalk North



Prepared for All-Points Technology Corp. by Heritage Consultants, 2023