

REMOTE FIELD REVIEW



CT SITING COUNCIL DOCKET NO. 514
RESPONSE TO INTERROGATORY #41
PROPOSED SOLAR ENERGY FACILITY
56 RIVER ROAD
PUTNAM, CONNECTICUT

PREPARED FOR:
**PUTNAM MEADOW
SOLAR STATION, LLC**

PREPARED BY:
ALL-POINTS TECHNOLOGY CORPORATION, P.C.
567 Vauxhall Street Extension – Suite 311
Waterford, CT 06385

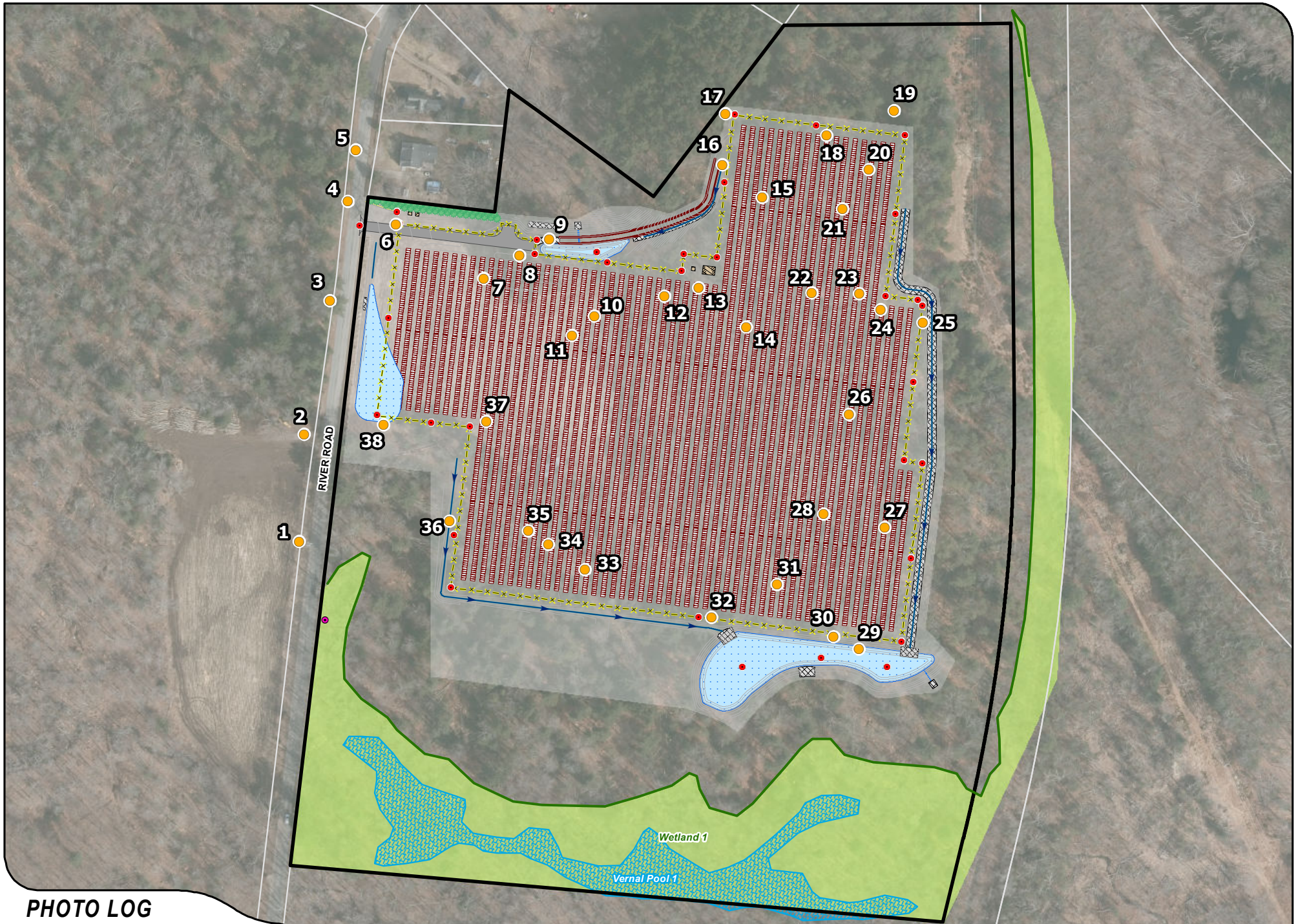
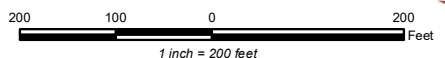


PHOTO LOG

- | | | | | |
|------------------------|----------------------------|----------------------|-----------------------------|----------------------|
| Solar Modules | Stormwater Swale | Utility Pole | Delineated Wetland Boundary | Photo Point Location |
| Culvert | Interconnection Path (OVH) | Landscape Screening | Wetland Area | Photo Markers |
| Concrete Equipment Pad | Perimeter Fence | Existing Culvert | Vernal Pool | |
| Gravel Access Road | Topographic Contour | Site | Approximate Parcel Boundary | |
| Stormwater Overflow | Berm | Limit of Disturbance | | |
| Stormwater Basin | | | | |



Proposed Solar Energy Facility
 Putnam Meadow Solar Station LLC
 56 River Road
 Putnam, Connecticut



PHOTO

1

DESCRIPTION

RIVER ROAD LOOKING NORTHEAST



PHOTO

2

DESCRIPTION

RIVER ROAD LOOKING EAST



PROPOSED PERIMETER FENCE

PHOTO
3A

DESCRIPTION
RIVER ROAD LOOKING EAST



PROPOSED GRAVEL ACCESS ROAD

PROPOSED PERIMETER FENCE

PHOTO

3B

DESCRIPTION

RIVER ROAD LOOKING EAST



PHOTO

4

DESCRIPTION

RIVER ROAD LOOKING EAST



PHOTOGRAPHED ON 4/19/2023

PHOTO

DESCRIPTION

5

RIVER ROAD LOOKING SOUTHEAST



PHOTOGRAPHED ON 4/19/2023

PHOTO
6A

DESCRIPTION
LOOKING SOUTHWEST



PROPOSED PERIMETER FENCE/END OF GRAVEL ACCESS ROAD

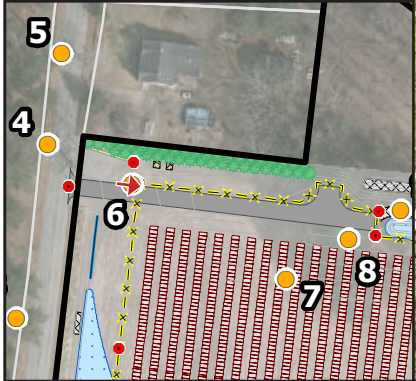


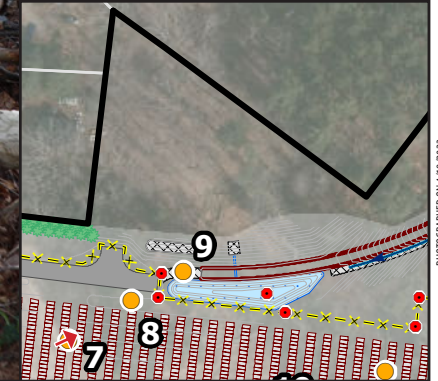
PHOTO
6B

DESCRIPTION
LOOKING EAST

PHOTOGRAPHED ON 4/19/2023



PROPOSED PERIMETER FENCE/END OF GRAVEL ACCESS ROAD



PHOTO

7

DESCRIPTION

LOOKING NORTHEAST



PHOTO

8

DESCRIPTION

LOOKING SOUTHWEST



PHOTO

9

DESCRIPTION
LOOKING EAST



PHOTO

10

DESCRIPTION

LOOKING NORTHEAST



NORTH



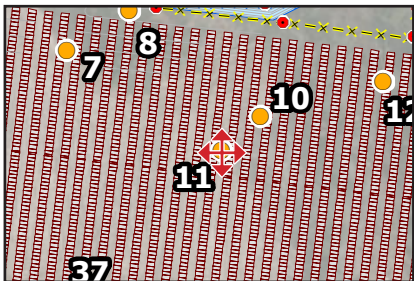
EAST



SOUTH



WEST



PHOTO

11

DESCRIPTION

FOUR CARDINAL POINTS

PHOTOGRAPHED ON 4/19/2023



PHOTO

12

DESCRIPTION

LOOKING NORTHEAST



PHOTO

13

DESCRIPTION

LOOKING NORTH



NORTH



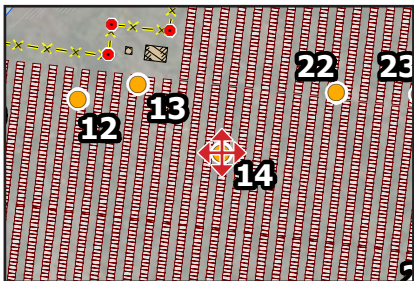
EAST



SOUTH



WEST



PHOTO

14

DESCRIPTION

FOUR CARDINAL POINTS

PHOTOGRAPHED ON 4/19/2023



PHOTO

15

DESCRIPTION

LOOKING NORTHWEST



PHOTO

16

DESCRIPTION

LOOKING NORTH



PHOTO
17A

DESCRIPTION
LOOKING EAST



PHOTOGRAPHED ON 4/19/2023

PHOTO

DESCRIPTION

17B

LOOKING NORTHWEST TOWARDS ADJACENT PROPERTY