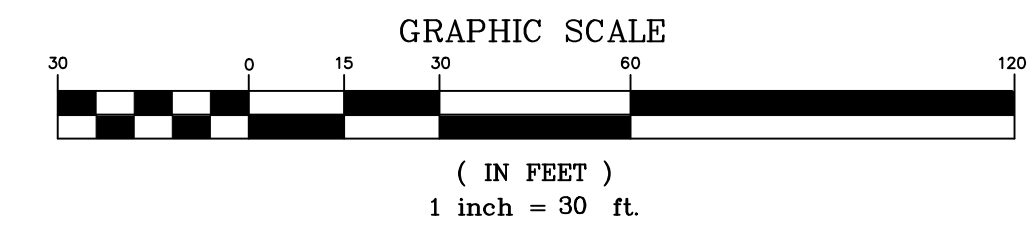


1 PARTIAL SITE/ PROPOSED FACILITIES OVERLAY PLAN
 ALT-1.0 SCALE: 1" = 30'



REV.	DATE	DRAWN BY	CHK'D BY	TUR	ALTERNATE PROPOSED TOWER FACILITY DESCRIPTION
0	04/26/23				

PROFESSIONAL ENGINEER SEAL



CENITEK engineering
 Centitek on Solutions
 (203) 488-0380
 (203) 488-3387 Fax
 652 North Branford Road
 Branford, CT 06405
 www.CentitekEng.com

Cellco Partnership d/b/a Verizon Wireless
LITCHFIELD SE CT
 MASON HILL ROAD
 NORTHFIELD, CT 06778

DATE: 04/13/23
 SCALE: AS NOTED
 JOB NO. 21058.07

PARTIAL SITE/
 FACILITIES
 OVERLAY PLAN

ALT-1.0
 Sheet No. 1 of 2

TREE REMOVAL SUMMARY	
NOTE: A TOTAL OF (9) TREES OF 6" IN DIAMETER OR GREATER AT BREAST HEIGHT ARE PROPOSED TO BE REMOVED AS FOLLOWS:	
PROPOSED SITE COMPOUND:	PROPOSED ACCESS DRIVE:
(2) 15" HICKORY	(1) 12" MAPLE
(2) 12" MAPLE	(1) 12" OAK
	(1) 12" HICKORY
	(2) 15" HICKORY

NOTES:

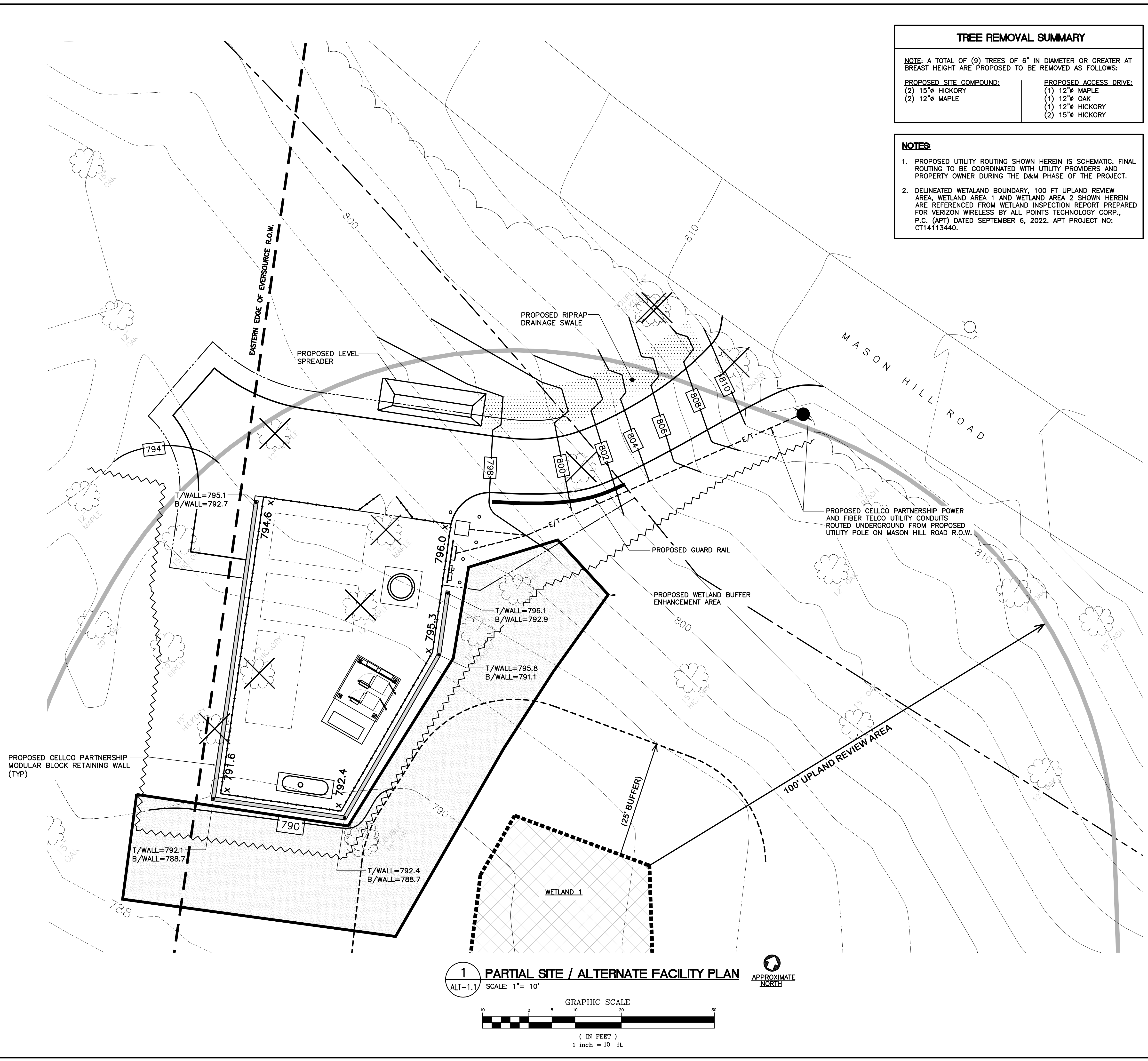
- PROPOSED UTILITY ROUTING SHOWN HEREIN IS SCHEMATIC. FINAL ROUTING TO BE COORDINATED WITH UTILITY PROVIDERS AND PROPERTY OWNER DURING THE D&M PHASE OF THE PROJECT.
- DELINEATED WETLAND BOUNDARY, 100 FT UPLAND REVIEW AREA, WETLAND AREA 1 AND WETLAND AREA 2 SHOWN HEREIN ARE REFERENCED FROM WETLAND INSPECTION REPORT PREPARED FOR VERIZON WIRELESS BY ALL POINTS TECHNOLOGY CORP., P.C. (APT) DATED SEPTEMBER 6, 2022. APT PROJECT NO: CT14113440.

SITE/SURVEY PLAN SYMBOLS LEGEND	
	PROPERTY LINE
	TIMBER GUARD RAIL (EXISTING)
	ACCESS DRIVE (EXISTING)
	UTILITY POLE (EXISTING)
	UTILITY POLE (PROPOSED)
	TREELINE (EXISTING)
	OVERHEAD WIRES (EXISTING)
	TREE >6" (EXISTING)
	TREE >6" TO BE REMOVED
	2' CONTOUR LINE
	10' CONTOUR LINE
	GRAVEL ACCESS DRIVE (PROPOSED)
	GRADING LINE/ELEVATION
	SPOT ELEVATION (PROPOSED)
	U/G ELECT. AND TELCO UTILITY CONDUITS (PROPOSED)
	ACCESS EASEMENT (PROPOSED)
	SILTATION FENCE/COMPOST FILTER SOCK EROSION CONTROL

Planting Schedule: Wetland Buffer Enhancement Area				
QTY	BOTANICAL NAME	COMMON NAME	SIZE	SPACING
15	AMELANCHIER CANADENSIS	SERVICEBERRY	3-4'	5-7 FEET
15	CORNUS RACEMOSA	GRAY DOGWOOD	3-4'	5-7 FEET
15	LINDERA BENZOIN	SPICEBUSH	3-4'	5-7 FEET
15	VIBURNUM DENTATUM	ARROWWOOD	3-4'	5-7 FEET
15	VIBURNUM LENTAGO	NANNYBERRY	3-4'	5-7 FEET

NOTES:

- THE WETLAND BUFFER ENHANCEMENT AREA WILL CONSIST OF PLANTING WITH SELECT NATIVE SHRUBS TO IMPROVE FUNCTION AND VALUE OF BUFFER ZONE WITH FOCUS ON PROVIDING A DENSE BUFFER OF NATIVE VEGETATION BETWEEN THE PROPOSED FACILITY AND NEARBY WETLAND WITH A FOCUS ON IMPROVING WILDLIFE HABITAT AND WATER QUALITY FUNCTIONS.
- SOIL EXPOSED AS A RESULT OF GRADING ACTIVITIES AND NATIVE SPECIES PLANTING ACTIVITIES WILL BE UNDER SOWN WITH NATIVE SEED MIXES. IN AREAS WHERE THE EXISTING OVERSTORY TREES WILL BE RETAINED, THE NEW ENGLAND SEMI-SHADE GRASS AND FORBES MIX (NEW ENGLAND WETLANDS PLANTS INC. OR APPROVED EQUIVALENT) WILL BE APPLIED. THIS SEED MIX IS APPROPRIATE FOR SUNNY LOCATIONS BY PROVIDING A PERMANENT COVER OF GRASSES AND POLLINATOR SPECIES TO PROVIDE BOTH GOOD EROSION CONTROL AND WILDLIFE HABITAT VALUE.
- SHRUB SPACING IS PROVIDED FOR GENERAL PURPOSES. ACTUAL LOCATION OF PLANTS TO BE ADJUSTED IN THE FIELD BASED ON AVAILABLE SPACE BETWEEN EXISTING TREES AND REMOVED INVASIVE SHRUBS. THE SUPERVISING WETLAND SCIENTIST WILL ASSIST IN SELECTING PLANTING LOCATIONS AND SPACING TO SIMULATE NATURAL GROWTH PATTERNS.



1 PARTIAL SITE / ALTERNATE FACILITY PLAN
 ALT-1.1 SCALE: 1" = 10'

GRAPHIC SCALE
 (IN FEET)
 1 inch = 10 ft.

APPROXIMATE NORTH

PROFESSIONAL ENGINEER SEAL

verizon

CEN TEK engineering
 Center on Solutions
 (203) 488-0380
 (203) 488-3597 Fax
 652 North Branford Road
 Branford, CT 06405
 www.CentekEng.com

Cellco Partnership d/b/a Verizon Wireless
LITCHFIELD SE CT
 MASON HILL ROAD
 NORTHFIELD, CT 06778

DATE: 04/13/23
 SCALE: AS NOTED
 JOB NO. 21058.07

PARTIAL SITE/
 ALTERNATE
 FACILITY PLAN

ALT-11

Sheet No. 2 of 2