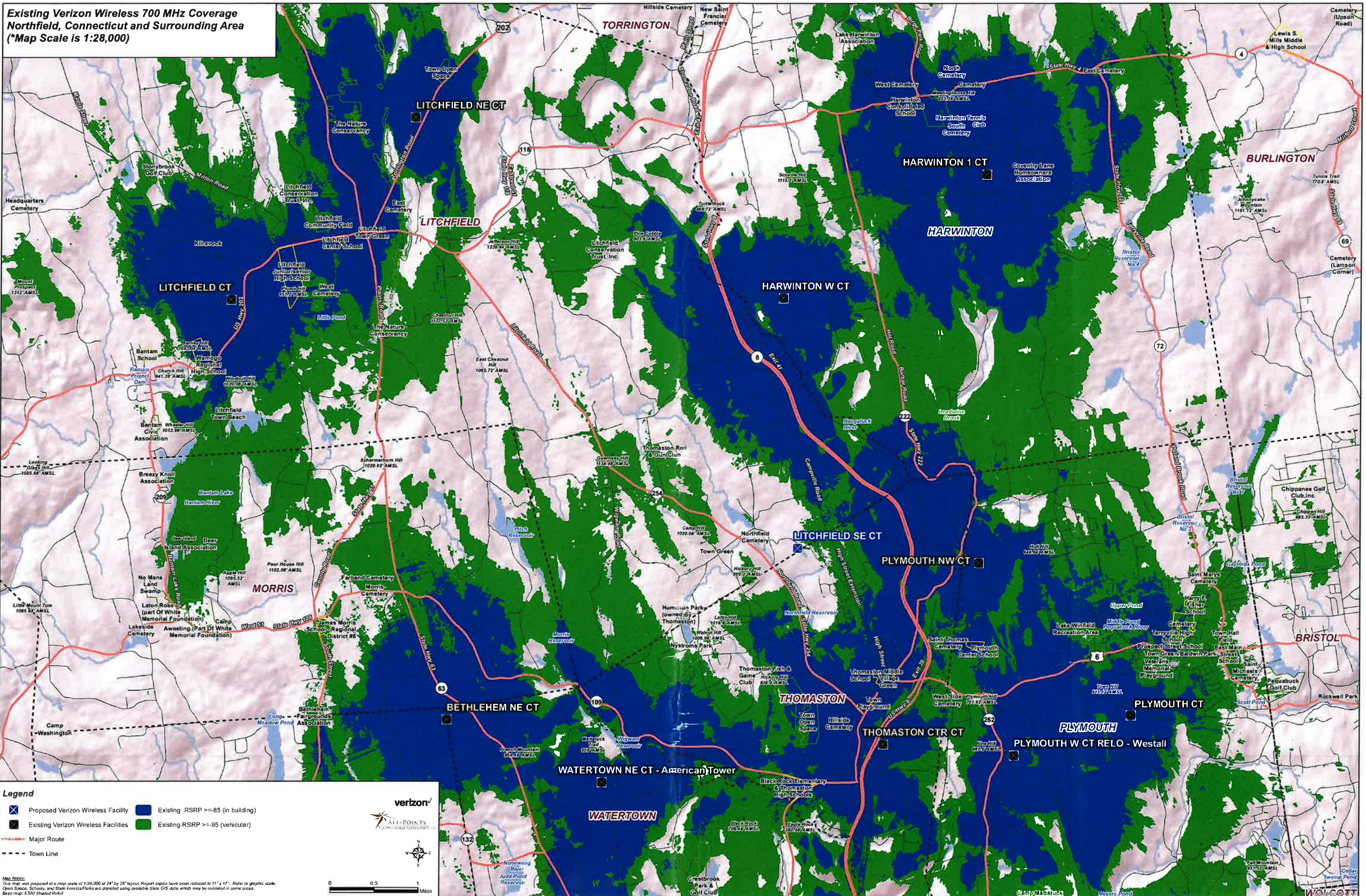


**Existing Verizon Wireless 700 MHz Coverage
Northfield, Connecticut and Surrounding Area
(*Map Scale is 1:28,000)**



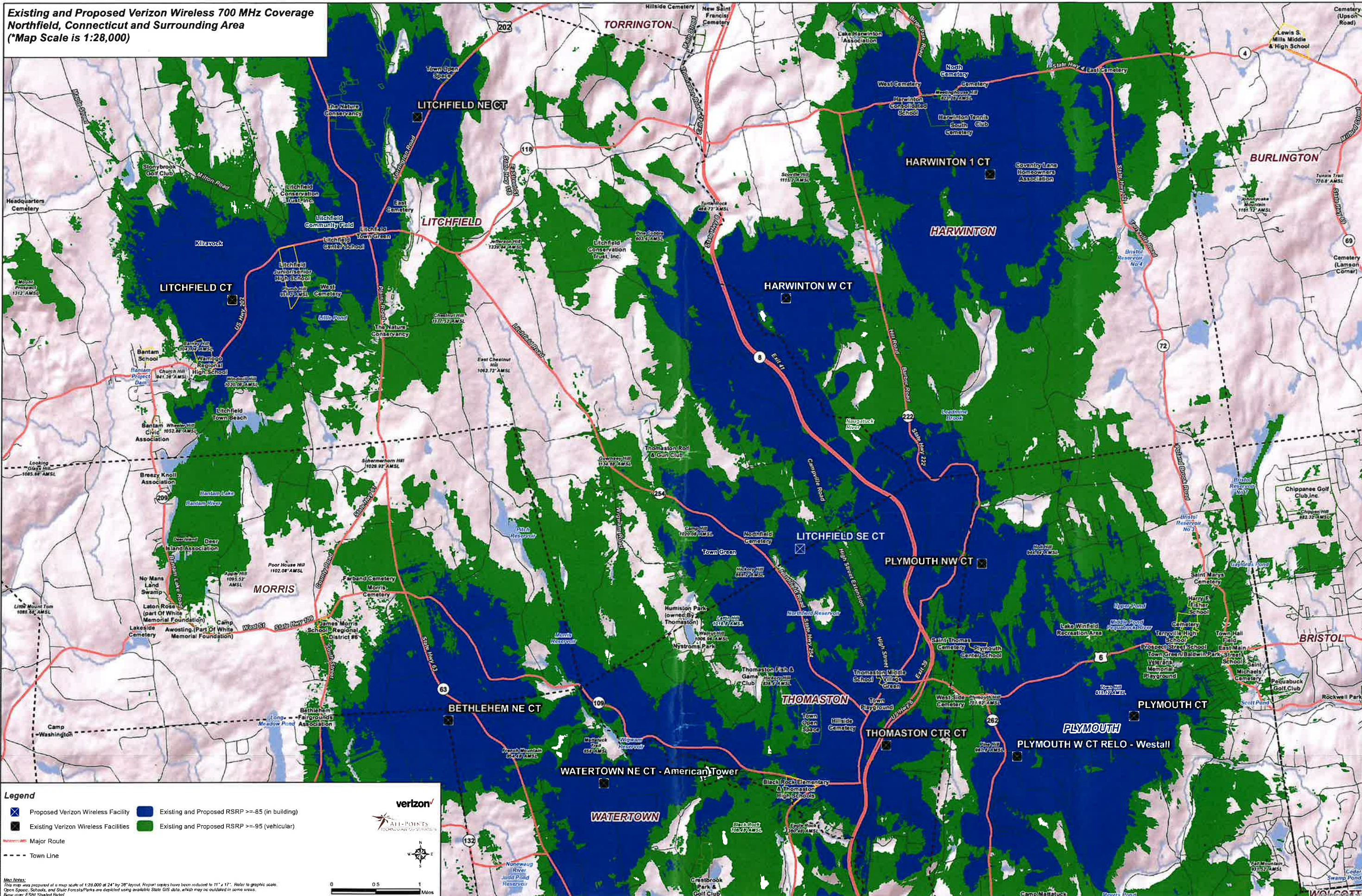
- Legend**
- ✕ Proposed Verizon Wireless Facility
 - ✕ Existing Verizon Wireless Facilities
 - Existing RSRP >= -85 (in building)
 - Existing RSRP >= -95 (vehicular)
 - Major Route
 - - - Town Line



Map Notes:
This map was prepared at a map scale of 1:28,000 at 24" by 36" layout. Report copies have been reduced to 11" x 17". Refer to graphic scale.
Open Space, Schools, and State Forests/Parks are depicted using available State GIS data, which may be outdated in some areas.
Base map: ESRI Shaded Relief

WOLCOFF

**Existing and Proposed Verizon Wireless 700 MHz Coverage
Northfield, Connecticut and Surrounding Area
(*Map Scale is 1:28,000)**



Legend

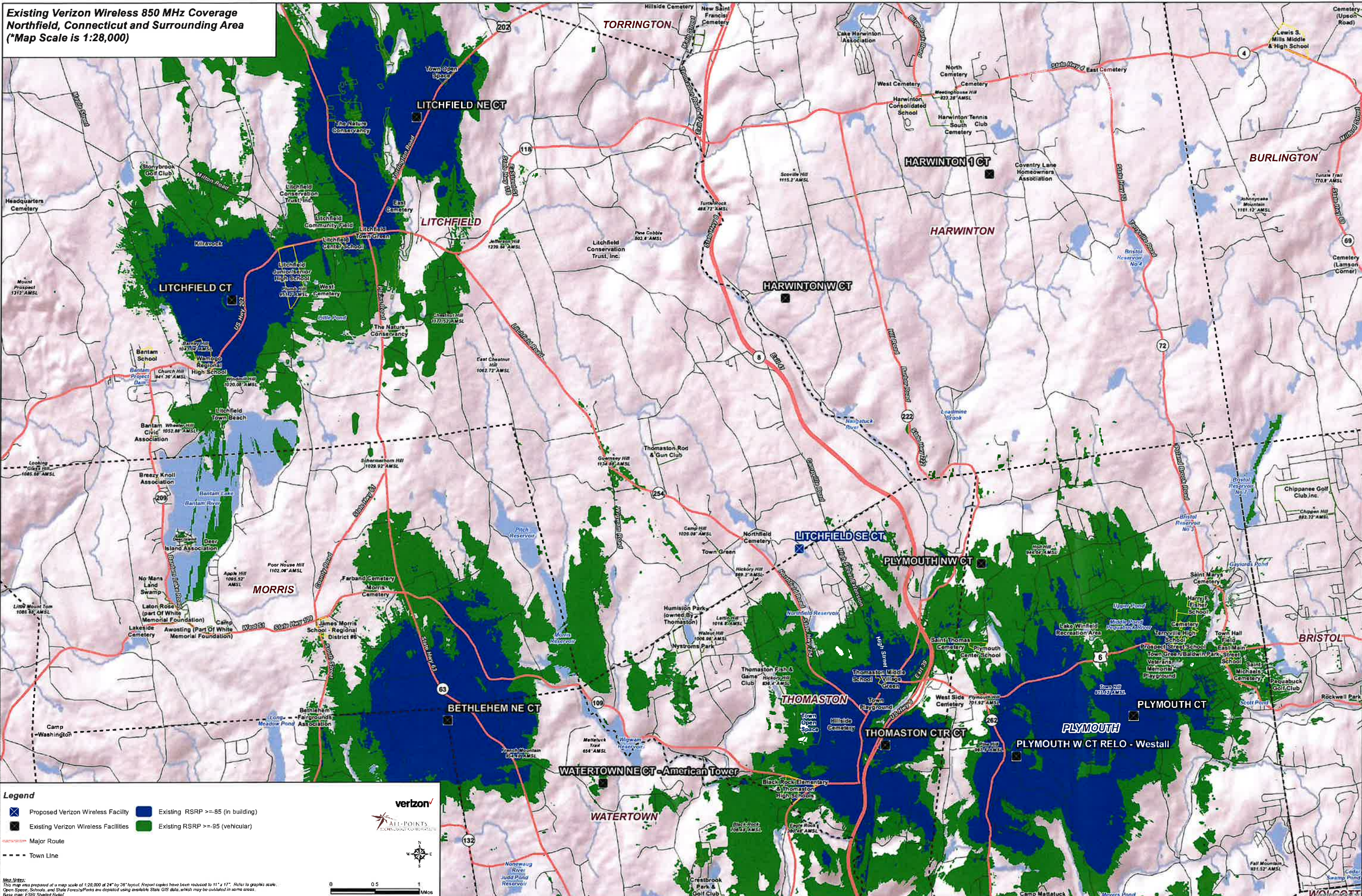
- ✕ Proposed Verizon Wireless Facility
- Existing and Proposed RSRP >= -85 (in building)
- Existing Verizon Wireless Facilities
- Existing and Proposed RSRP >= -95 (vehicular)
- Major Route
- - - Town Line

Verizon
ALL-POINTS
TECHNOLOGY OPERATIONS

Map Notes:
This map was prepared at a map scale of 1:28,000 at 24" by 36" layout. Printed copies have been reduced to 11" x 17". Refer to graphic scale.
Open Space, Schools, and State Forests/Parks are depicted using available State GIS data, which may be outdated in some areas.
Base map: ESRI Shaded Relief

0 0.5 1 Miles

**Existing Verizon Wireless 850 MHz Coverage
Northfield, Connecticut and Surrounding Area
(*Map Scale is 1:28,000)**



Legend

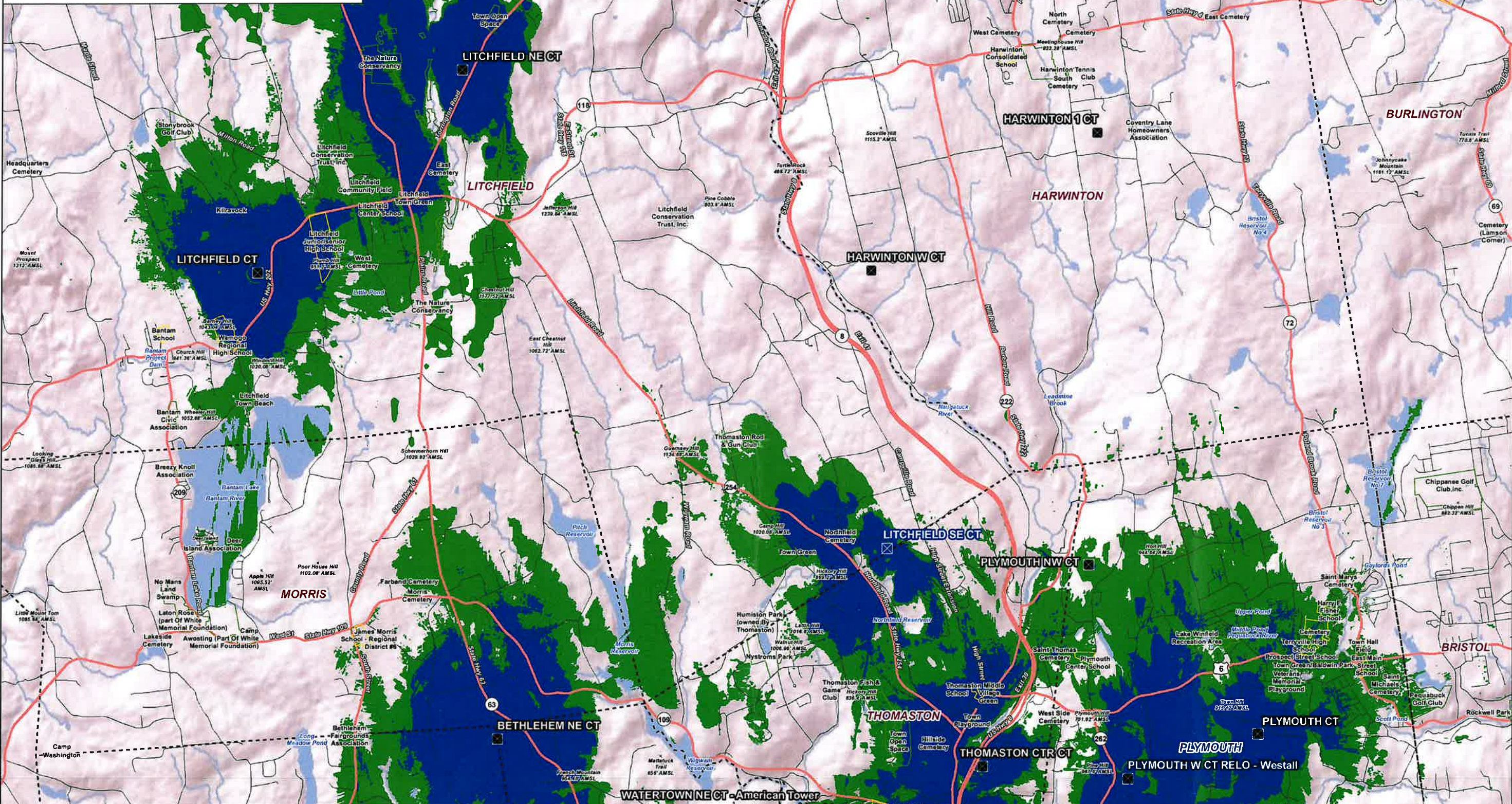
- Proposed Verizon Wireless Facility
- Existing Verizon Wireless Facilities
- Existing RSRP >= -85 (in building)
- Existing RSRP > -95 (vehicular)
- Major Route
- - - Town Line

Map Notes:
This map was prepared at a map scale of 1:28,000 at 24" by 36" layout. Reprofit copies have been reduced to 11" x 17". Refer to graphic scale.
Open Space, Schools, and State Forests/Parks are depicted using available State GIS data, which may be outdated in some areas.
Base Map: ESRI Shaded Relief

0 0.5 1 Miles



**Existing and Proposed Verizon Wireless 850 MHz Coverage
Northfield, Connecticut and Surrounding Area
(*Map Scale is 1:28,000)**



Legend

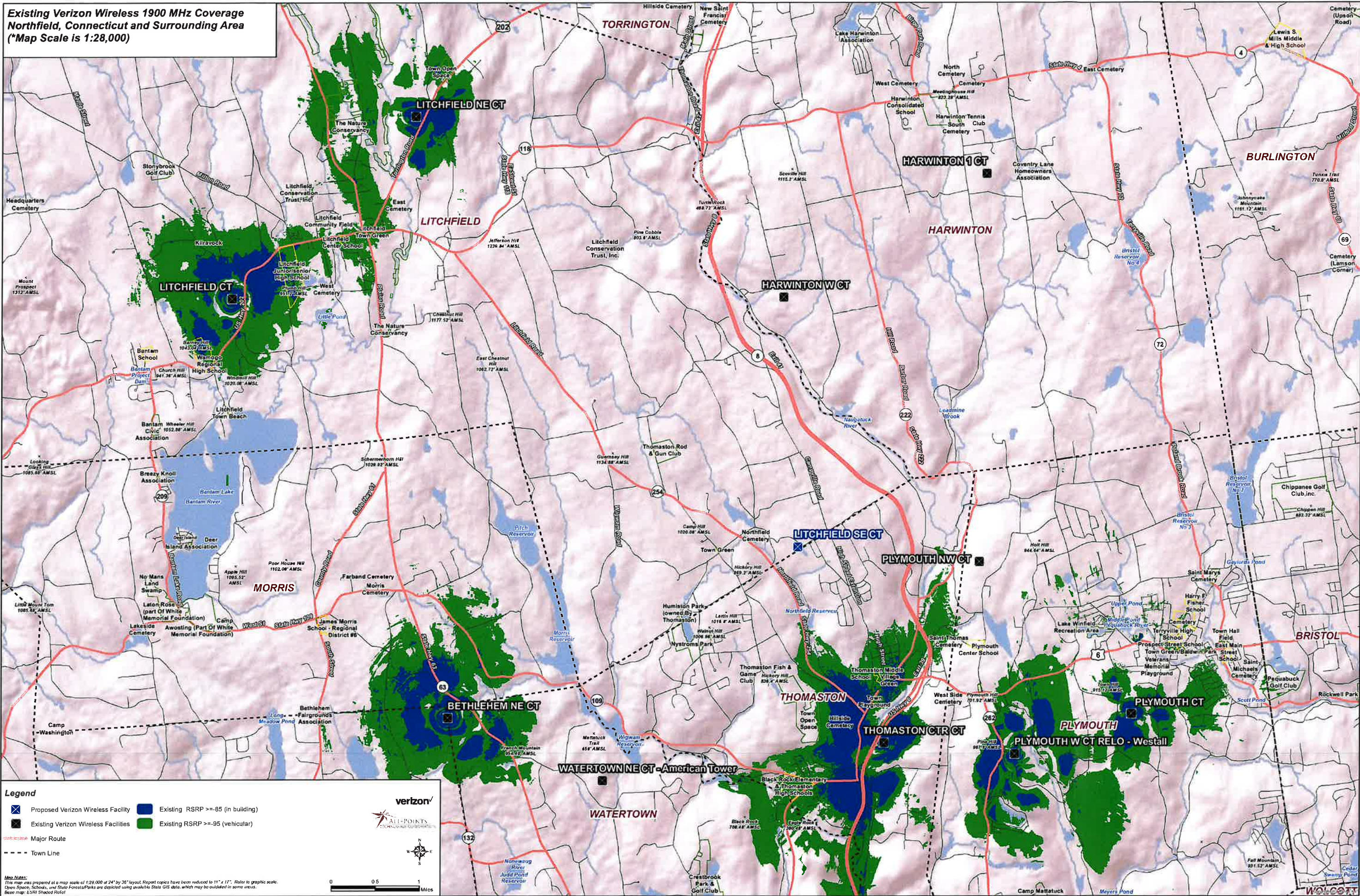
- Proposed Verizon Wireless Facility
- Existing Verizon Wireless Facilities
- Existing and Proposed RSRP >= -85 (in building)
- Existing and Proposed RSRP >= -95 (vehicular)
- Major Route
- - - Town Line

Map Notes:
This map was prepared at a map scale of 1:28,000 at 24" by 36" layout. Report copies have been reduced to 11" x 17". Refer to graphic scale.
Open Space, Schools, and State Forests/Parks are depicted using the State GIS data, which may be outdated in some areas.
Base map: ESRI Shaded Relief

verizon
ALL-POINTS
TELEPHONE COVERAGE

0 0.5 1 Miles

**Existing Verizon Wireless 1900 MHz Coverage
Northfield, Connecticut and Surrounding Area
(*Map Scale is 1:28,000)**



Legend

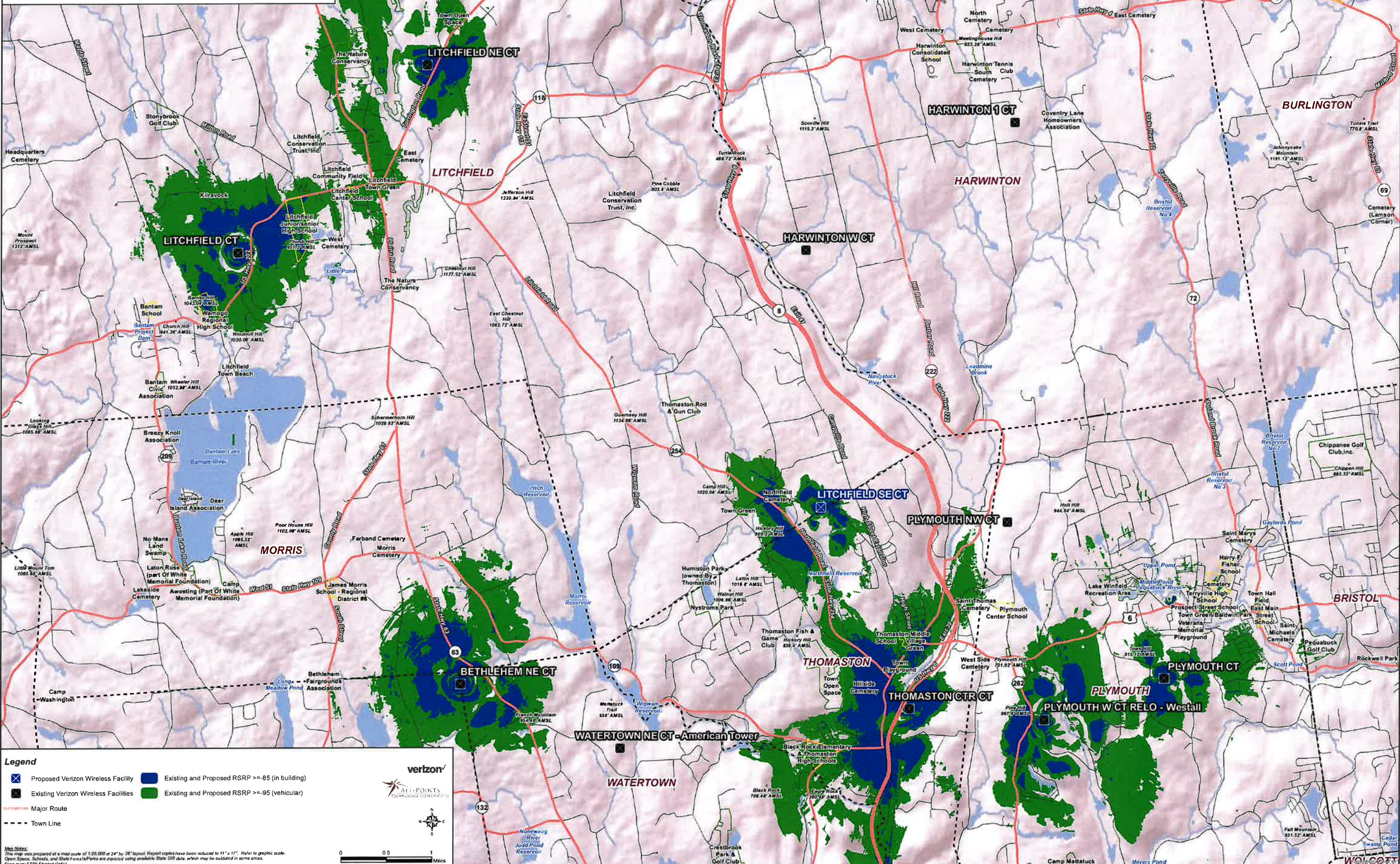
- ✕ Proposed Verizon Wireless Facility
- Existing Verizon Wireless Facilities
- Major Route
- - - Town Line
- Existing RSRP >= -85 (in building)
- Existing RSRP >= -95 (vehicular)

Map Notes:
This map was prepared at a map scale of 1:28,000 at 24" by 36" layout. Report copies have been reduced to 11" x 17". Refer to graphic scale.
Open Space, Schools, and State Forests/Parks are depicted using available State GIS data, which may be outdated in some areas.
Base map: ESRI Shaded Relief

0 0.5 1 Miles

© 2010 Verizon Wireless. All rights reserved. This map is the property of Verizon Wireless and is not to be reproduced, stored in a retrieval system, or transmitted in any form or by any means, electronic, mechanical, photocopying, recording, or by any information storage and retrieval system, without the prior written permission of Verizon Wireless.

**Existing and Proposed Verizon Wireless 1900 MHz Coverage
Northfield, Connecticut and Surrounding Area
(*Map Scale is 1:28,000)**



Legend

- ✕ Proposed Verizon Wireless Facility
- Existing Verizon Wireless Facilities
- Existing and Proposed RSRP >= -85 (in building)
- Existing and Proposed RSRP >= -95 (vehicular)
- Major Route
- - - Town Line

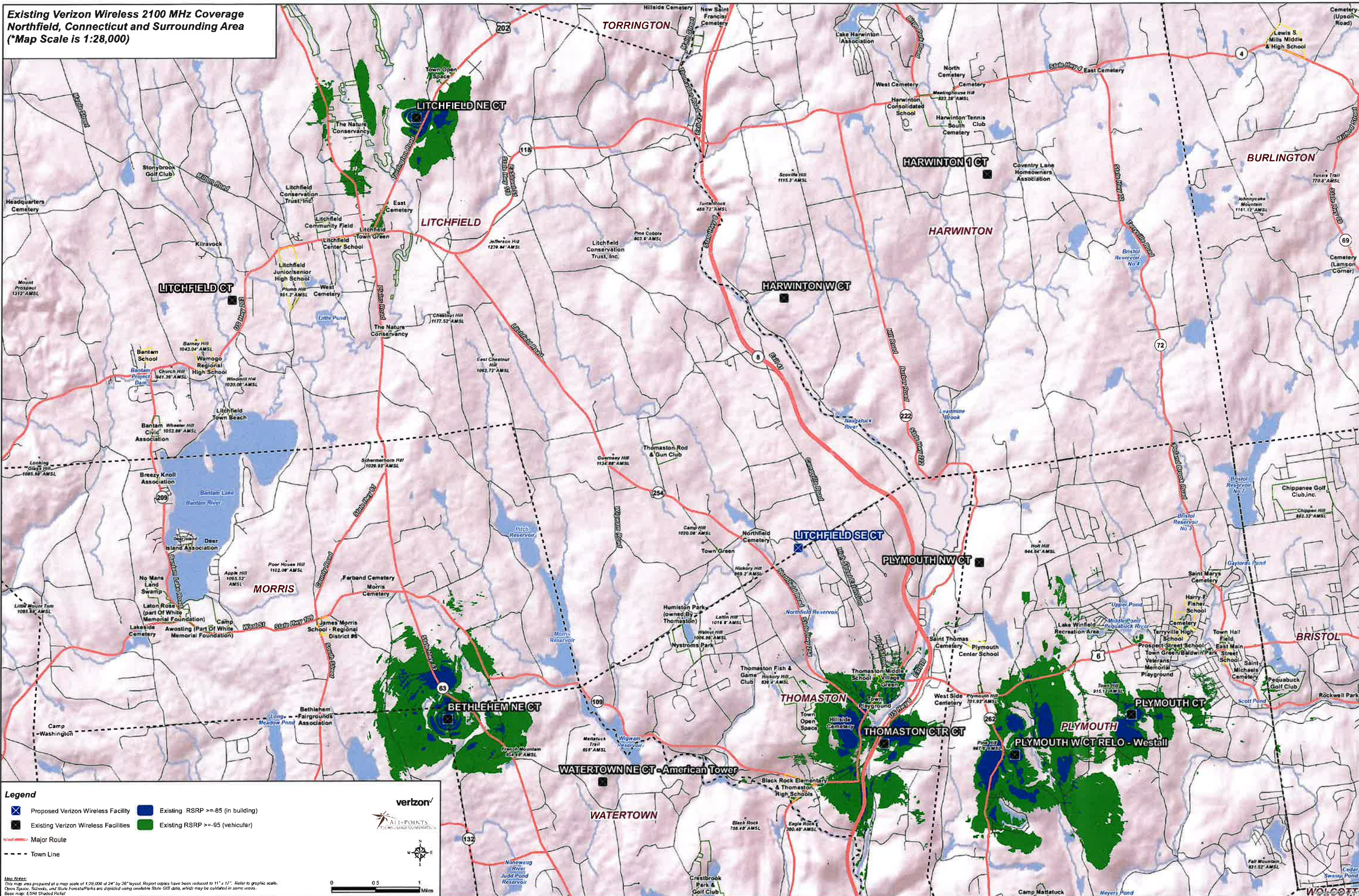
Verizon
All-Points
Coverage

Map Notes:
This map was prepared at a map scale of 1:28,000 at 24" by 36" layout. Report content has been reduced to 11" x 17". Refer to graphic scale. Open Space, Schools, and State Forests/Parks are depicted using available State GIS data, which may be outdated in some areas. Base map: ESRI Shaded Relief

0 0.5 1 Miles

Copyright 2010 Verizon Wireless. All rights reserved. This map is a service mark of Verizon Wireless. All other marks are the property of their respective owners.

**Existing Verizon Wireless 2100 MHz Coverage
Northfield, Connecticut and Surrounding Area
(*Map Scale is 1:28,000)**



Legend

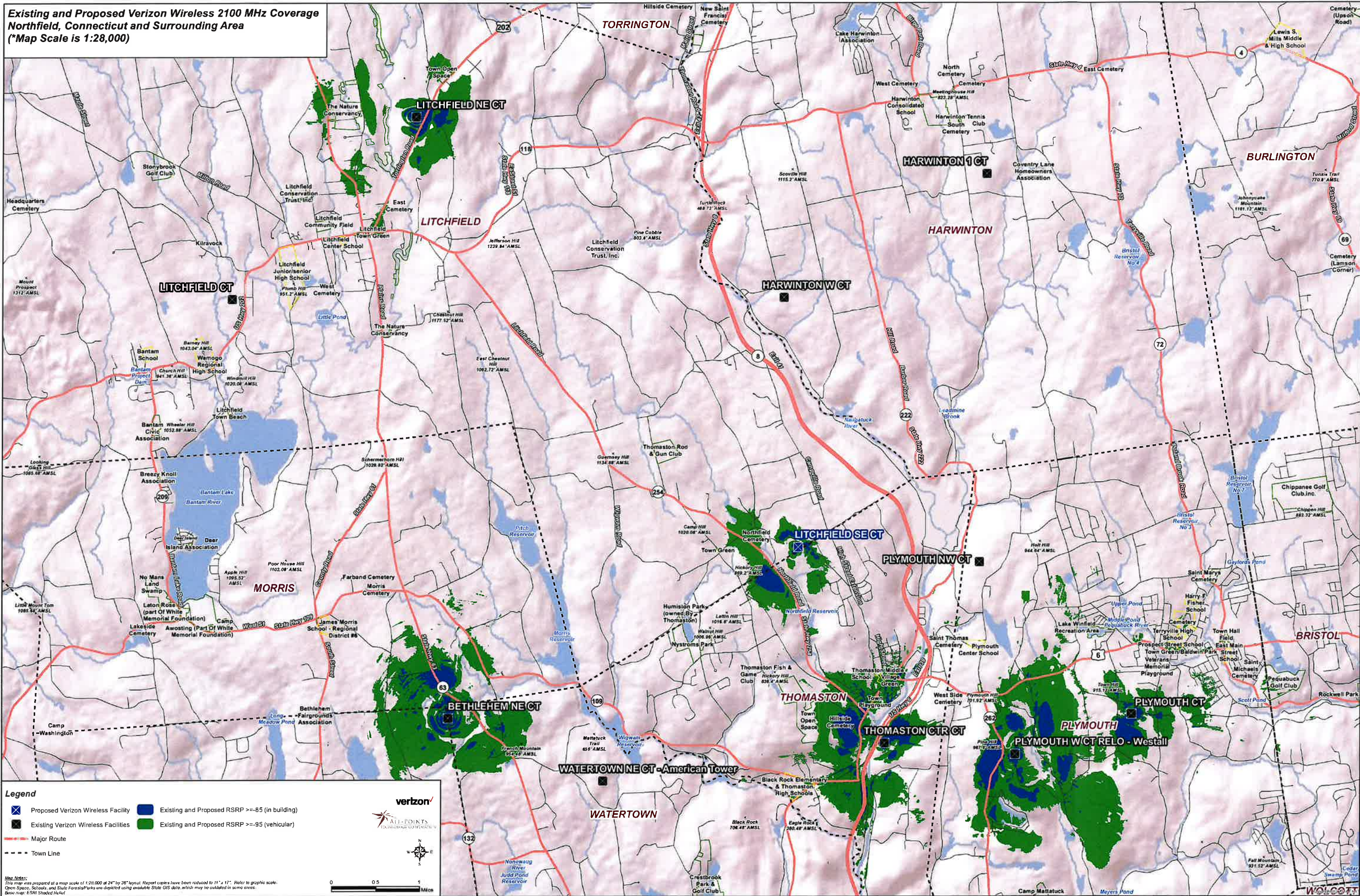
- Proposed Verizon Wireless Facility
- Existing Verizon Wireless Facilities
- Existing RSRP >= -85 (in building)
- Existing RSRP >= -95 (vehicular)
- Major Route
- Town Line

verizon
ALL-POINTS
TECHNOLOGICAL SERVICES

Map Notes:
This map was prepared at a map scale of 1:28,000 at 24" by 36" layout. Report copies have been reduced to 11" x 17". Refer to graphic scale.
Open Space, Schools, and State Forests/Parks are depicted using available State GIS data, which may be outdated in some areas.
Base map: ESRI Shaded Relief

0 0.5 1 Miles

**Existing and Proposed Verizon Wireless 2100 MHz Coverage
Northfield, Connecticut and Surrounding Area
(*Map Scale is 1:28,000)**



Legend

- Proposed Verizon Wireless Facility
- Existing Verizon Wireless Facilities
- Existing and Proposed RSRP >= -85 (in building)
- Existing and Proposed RSRP >= -95 (vehicular)
- Major Route
- - - Town Line

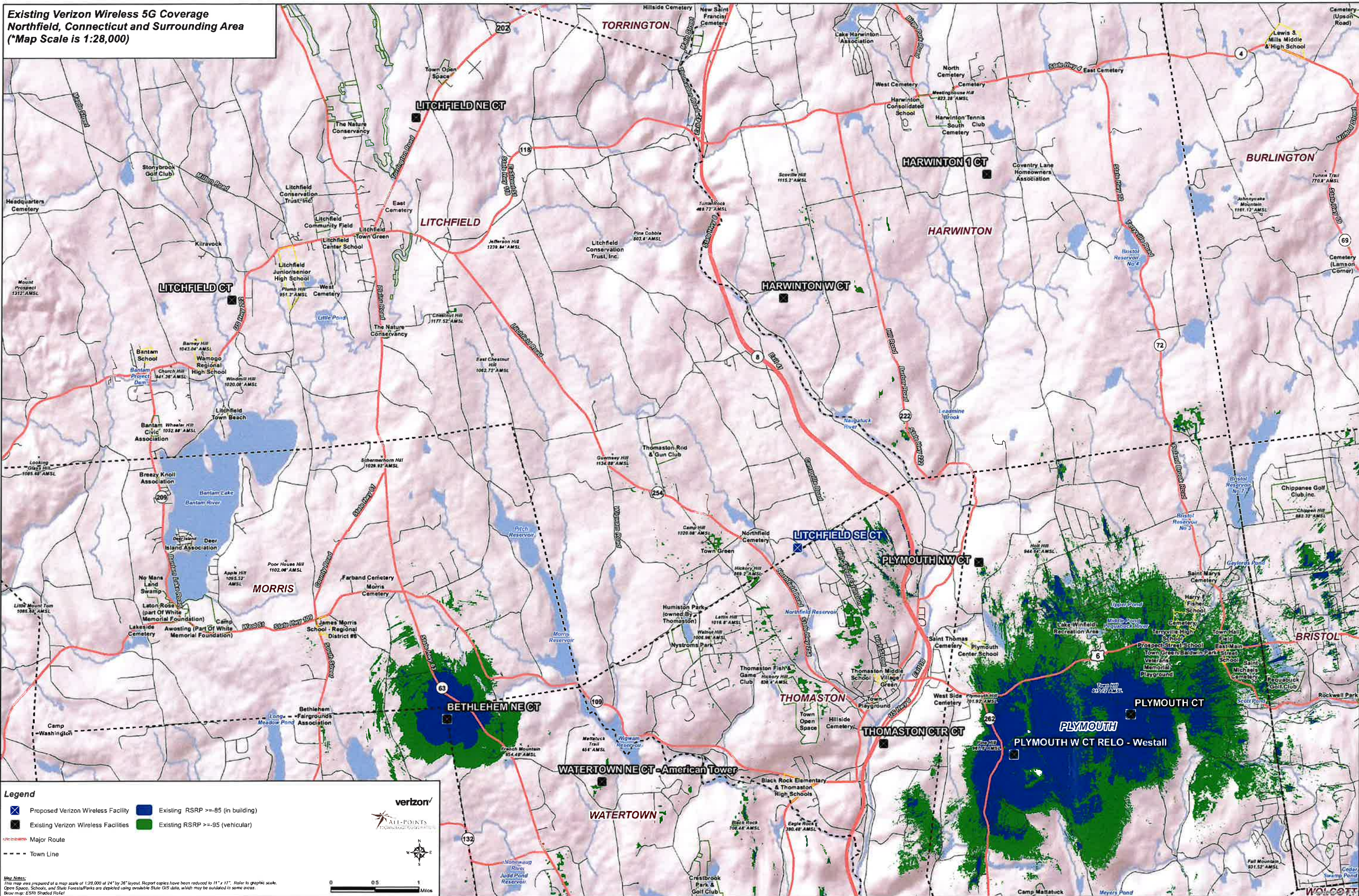
Map Notes:
This map was prepared at a map scale of 1:28,000 at 24" by 36" layout. Report circles have been reduced to 11" x 17". Refer to graphic scale. Open Space, Schools, and State Forests/Parks are depicted using available State GIS data, which may be outdated in some areas. Base map: ESRI Shaded Relief

Scale: 0 0.5 1 Miles



WOLCOFF

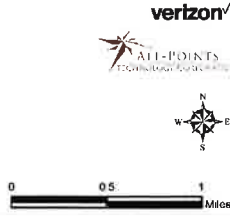
**Existing Verizon Wireless 5G Coverage
Northfield, Connecticut and Surrounding Area
(*Map Scale is 1:28,000)**



Legend

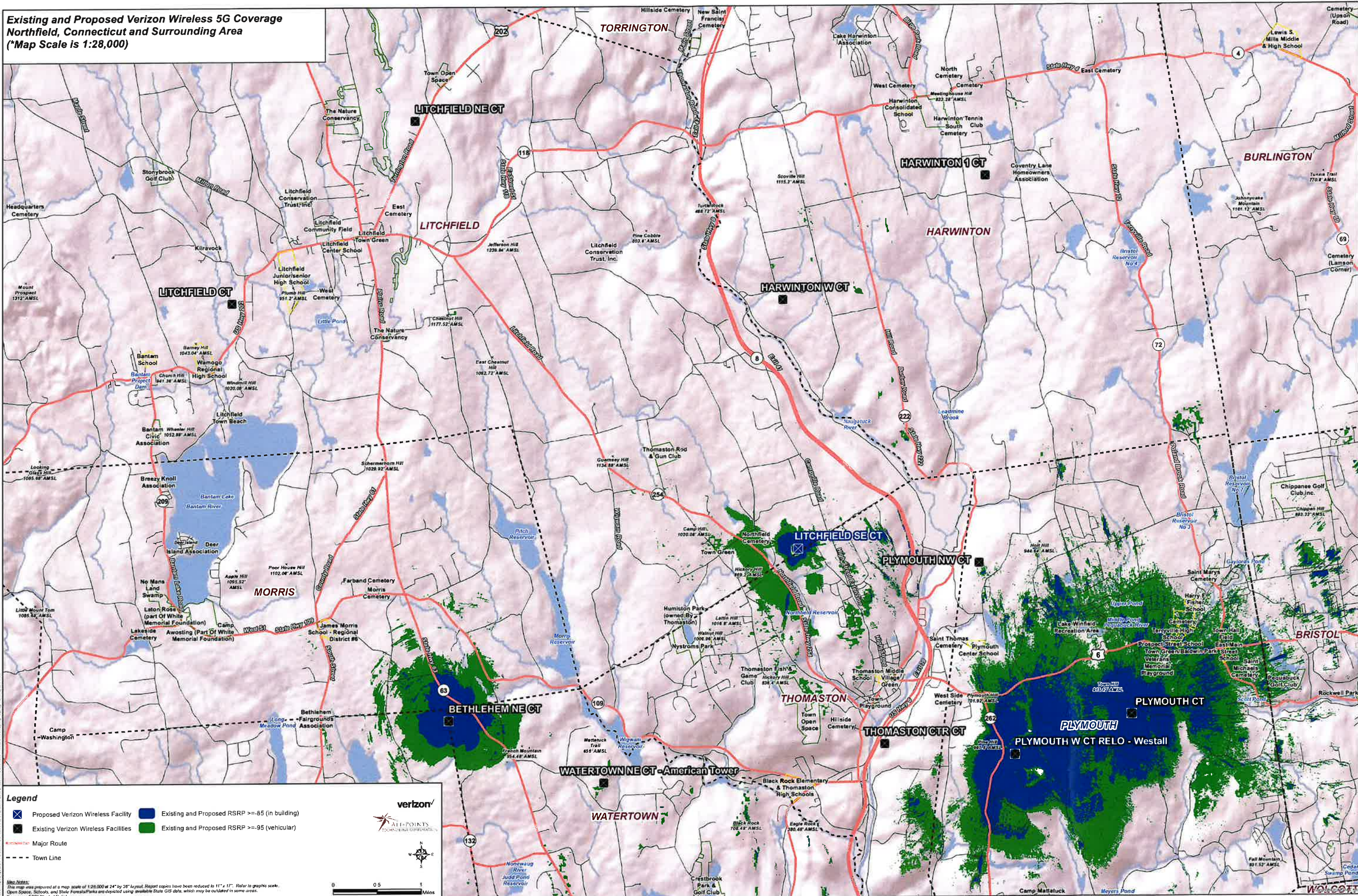
- ✕ Proposed Verizon Wireless Facility
- Existing Verizon Wireless Facilities
- Existing RSRP >= -85 (in building)
- Existing RSRP >= -95 (vehicular)
- Major Route
- - - Town Line

Map Notes:
This map was prepared at a map scale of 1:28,000 at 24" by 36" layout. Report copies have been reduced to 11" x 17". Refer to graphic scale.
Open Space, Schools, and State Forests/Parks are depicted using available State GIS data, which may be outdated in some areas.
Base map: ESRI Shaded Relief



WOLCOFF

**Existing and Proposed Verizon Wireless 5G Coverage
Northfield, Connecticut and Surrounding Area
(*Map Scale is 1:28,000)**



Legend

- Proposed Verizon Wireless Facility
- Existing and Proposed RSRP >= -85 (in building)
- Existing Verizon Wireless Facilities
- Existing and Proposed RSRP >= -95 (vehicular)
- Major Route
- Town Line

verizon
ALL-POINTS
COMMUNICATIONS CORPORATION

Map Notes:
This map was prepared at a map scale of 1:28,000 at 24" by 36" layout. Repeat copies have been reduced to 11" x 17". Refer to graphic scale.
Open Space, Railroads, and State Forests/Parcs are depicted using available State GIS data, which may be outdated in some areas.
Base map: ESRI Shaded Relief

0 0.5 1 Miles