



STATE OF CONNECTICUT
CONNECTICUT SITING COUNCIL

Ten Franklin Square, New Britain, CT 06051

Phone: (860) 827-2935 Fax: (860) 827-2950

E-Mail: siting.council@ct.gov

Web Site: portal.ct.gov/csc

VIA ELECTRONIC MAIL

July 14, 2023

Kenneth C. Baldwin, Esq.
Robinson & Cole LLP
280 Trumbull Street
Hartford, CT 06103-3597
kbaldwin@rc.com

RE: **DOCKET NO. 510** – New Cingular Wireless PCS, LLC d/b/a AT&T and Tarpon Towers II, LLC Certificate of Environmental Compatibility and Public Need for the construction, maintenance, and operation of a telecommunications facility located at 92 Greens Farms Road, Westport, Connecticut. **Development & Management Plan Revision.**

Dear Attorney Baldwin:

The Connecticut Siting Council (Council) is in receipt of your correspondence on behalf of Cellco Partnership d/b/a Verizon Wireless (Cellco) dated July 13, 2023, regarding revisions to the Development and Management (D&M) Plan for Cellco's collocation at the above-referenced facility that was approved by the Council on April 14, 2023.

Pursuant to Regulations of Connecticut State Agencies §16-50j-77(b), your request for the relocation of Cellco's equipment to the southwest corner of the compound and the installation of a 30-kilowatt diesel fueled emergency backup generator in lieu of the 50-kilowatt diesel fueled emergency backup generator referenced in the February 23, 2023 D&M Plan for the facility, as specified in your July 13, 2023 correspondence, is hereby approved.

This approval applies only to the D&M Plan revision for Cellco's collocation at the facility dated July 13, 2023.

Please be advised that deviations from this revised collocation plan are enforceable under the provisions of Connecticut General Statutes § 16-50u.

Thank you for your attention and cooperation.

Sincerely,

Melanie A. Bachman
Executive Director

MAB/IN/laf

July 13, 2023

Melanie A. Bachman, Esq.
Executive Director/Staff Attorney
Connecticut Siting Council
10 Franklin Square
New Britain, CT 06051

Re: **Docket No. 510 – New Cingular Wireless PCS, LLC d/b/a AT&T and Tarpon Towers II, LLC Application for a Certificate of Environmental Compatibility and Public Need for the Construction, Maintenance and Operation of a Telecommunications Facility at 92 Greens Farm Road, Westport, Connecticut**

Minor D&M Plan Modifications

Dear Attorney Bachman:

On behalf of Cellco Partnership d/b/a Verizon Wireless (“Cellco”), I respectfully request Siting Council (“Council”) staff approval of two minor changes to the Docket No. 510 D&M Plan approved by the Council on April 13, 2023. The changes are described as follows.

1. After the submission and approval of the D&M Plan, Cellco was notified that Tarpon Towers II, LLC (“Tarpon”) had asked Cellco to relocate its equipment pad to the southwest corner of the facility compound. Included in Attachment 1 is a revised lease exhibit showing Cellco’s new equipment location.
2. Notwithstanding Tarpon’s notations on its D&M Plan drawings Cellco, consistent with its testimony and evidence submitted during the Docket No. 510 hearing intends to install a 30-kW diesel-fueled generator on its 12-foot by 18-foot concrete equipment pad. Included as Attachment 2 is a copy of the Generac 30-kW generator specification sheet. The generator specification sheet was also attached to Cellco’s responses to Council Interrogatories dated August 2, 2022. The diesel generator will maintain a 200-gallon belly (fuel) tank with tertiary containment to protect against fuel leaks. The generator

Melanie A. Bachman, Esq.
July 13, 2023
Page 2

and fuel tank will also be equipped with leak detection alarms. Operation of the generator will be monitored on a daily basis by Cellco's cell site technicians.

If you have any questions or need any additional information regarding this request for minor changes to the approved Docket No. 510 D&M Plan, please do not hesitate to contact me.

Sincerely,

A handwritten signature in black ink, appearing to read "Kenneth C. Baldwin". The signature is fluid and cursive, with a long horizontal stroke at the end.

Kenneth C. Baldwin

Copy to:

Service List
Greg Richard
Michael Humphreys
Tim Parks

ATTACHMENT 1

verizon
WIRELESS COMMUNICATIONS FACILITY

29 ALEXANDER DRIVE
WALLINGFORD, CT 06492

On Air Engineering, LLC
86 Foundry Pond Road
Cold Spring, NY 10516
(914) 456-4624
onair@optonline.net

DRAWING SCALES ARE INTENDED FOR 11"x17" SHEET SIZES UNLESS OTHERWISE NOTED. DIMENSIONS SHOWN ARE UNLESS OTHERWISE NOTED.

SUBMITTALS	
NO.	DESCRIPTION
1	AS SHOWN
2	AS SHOWN

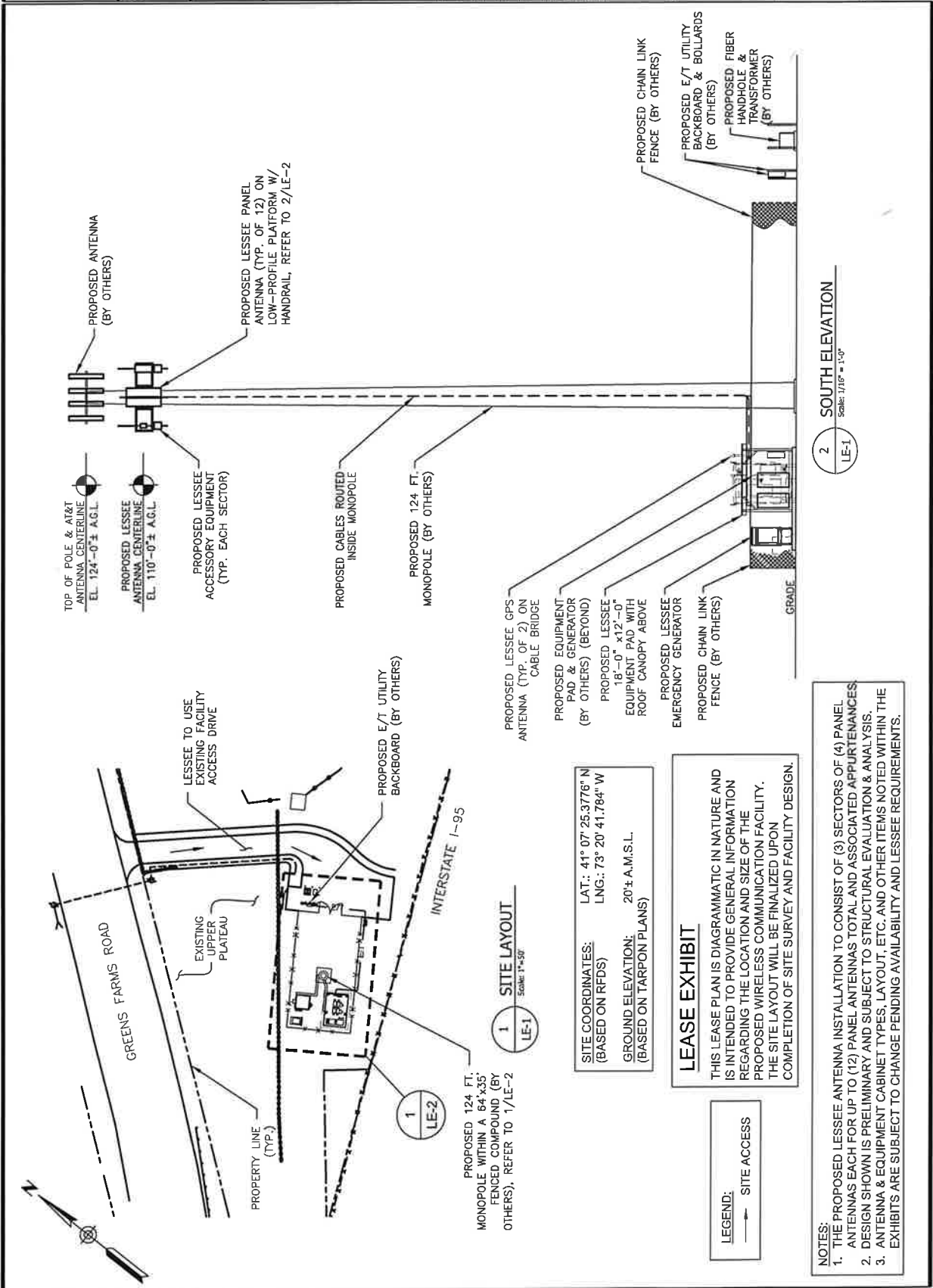
NO.	DATE	DESCRIPTION
1		
2		

DRAWN BY: MF
CHECKED BY: DW
SITE NAME: WESTPORT 3 CT

SITE ADDRESS:
TARPON TOWERS #CT1024
92 GREENS FARMS RD.
WESTPORT, CT 06880

SHEET TITLE:
SITE LAYOUT &
SOUTH ELEVATION

SHEET NUMBER:
LE-1



TOP OF POLE & AT&T ANTENNA CENTERLINE EL. 124'-0"± A.G.L.
PROPOSED LESSEE ANTENNA CENTERLINE EL. 110'-0"± A.G.L.

PROPOSED LESSEE ACCESSORY EQUIPMENT (TYP. EACH SECTOR)
PROPOSED LESSEE PANEL ANTENNA (TYP. OF 12) ON LOW-PROFILE PLATFORM W/ HANDRAIL, REFER TO 2/LE-2

PROPOSED CABLES ROUTED INSIDE MONOPOLE
PROPOSED 124 FT. MONOPOLE (BY OTHERS)

PROPOSED LESSEE GPS ANTENNA (TYP. OF 2) ON CABLE BRIDGE
PROPOSED LESSEE EQUIPMENT PAD & GENERATOR (BY OTHERS) (BEYOND)
PROPOSED LESSEE 18'-0" x 12'-0" EQUIPMENT PAD WITH ROOF CANOPY ABOVE
PROPOSED LESSEE EMERGENCY GENERATOR
PROPOSED CHAIN LINK FENCE (BY OTHERS)

PROPOSED CHAIN LINK FENCE (BY OTHERS)
PROPOSED E/T UTILITY BACKBOARD & BOLLARDS (BY OTHERS)
PROPOSED FIBER HANDHOLE & TRANSFORMER (BY OTHERS)

LESSEE TO USE EXISTING FACILITY ACCESS DRIVE
PROPOSED E/T UTILITY BACKBOARD (BY OTHERS)

1 SITE LAYOUT
Scale: 1"=50'

SITE COORDINATES: LAT.: 41° 07' 25.3776" N
(BASED ON RFD5) LNG.: 73° 20' 41.784" W
GROUND ELEVATION: 20'± A.M.S.L.
(BASED ON TARPON PLANS)

LEASE EXHIBIT
THIS LEASE PLAN IS DIAGRAMMATIC IN NATURE AND IS INTENDED TO PROVIDE GENERAL INFORMATION REGARDING THE LOCATION AND SIZE OF THE PROPOSED WIRELESS COMMUNICATION FACILITY. THE SITE LAYOUT WILL BE FINALIZED UPON COMPLETION OF SITE SURVEY AND FACILITY DESIGN.

LEGEND:
SITE ACCESS

2 SOUTH ELEVATION
Scale: 1/16" = 1'-0"

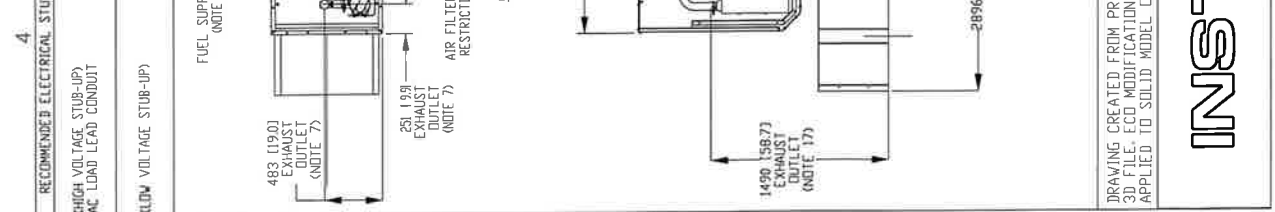
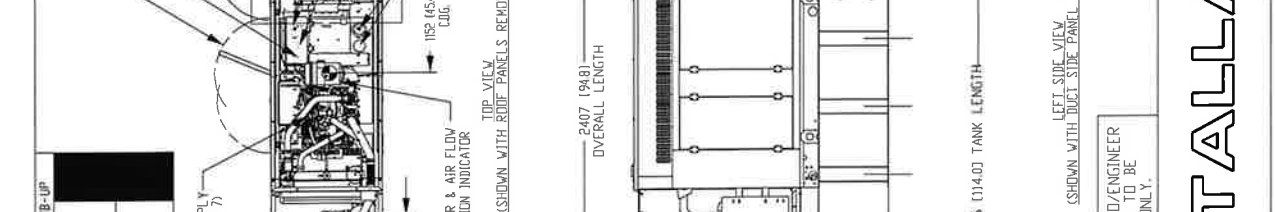
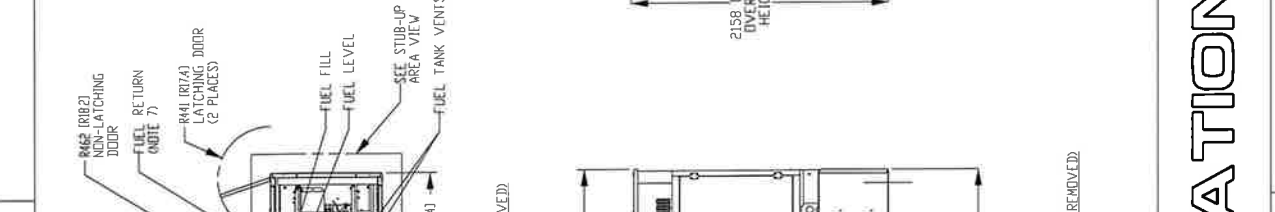
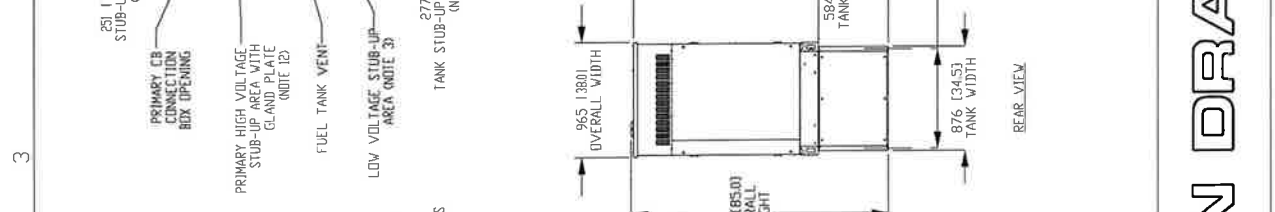
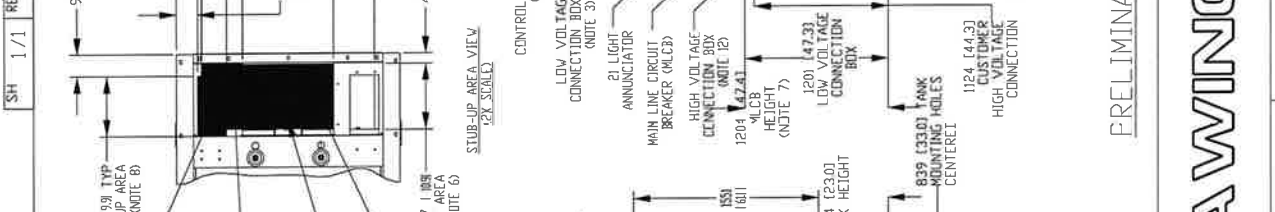
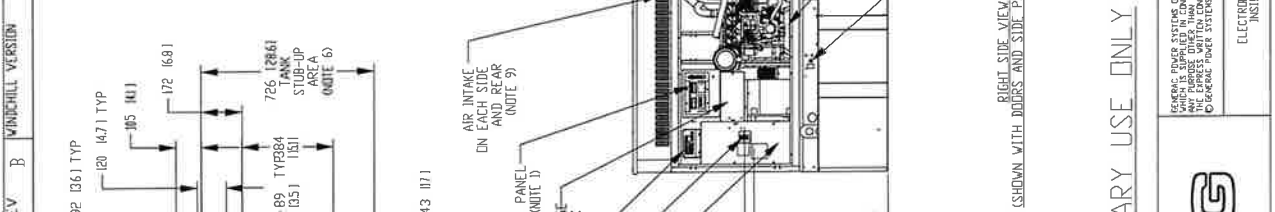
- NOTES:**
1. THE PROPOSED LESSEE ANTENNA INSTALLATION TO CONSIST OF (3) SECTORS OF (4) PANEL ANTENNAS EACH FOR UP TO (12) PANEL ANTENNAS TOTAL AND ASSOCIATED APPURTENANCES.
 2. DESIGN SHOWN IS PRELIMINARY AND SUBJECT TO STRUCTURAL EVALUATION & ANALYSIS.
 3. ANTENNA & EQUIPMENT CABINET TYPES, LAYOUT, ETC. AND OTHER ITEMS NOTED WITHIN THE EXHIBITS ARE SUBJECT TO CHANGE PENDING AVAILABILITY AND LESSEE REQUIREMENTS.

ATTACHMENT 2

RECOMMENDED ELECTRICAL STUB-UP	
HIGH VOLTAGE STUB-UP AC LOAD LEAD CONDUIT	
LOW VOLTAGE STUB-UP	

NOTES:

- CONTROL PANEL INCLUDES BATTERY CHARGER WITH THREE PRING CORD
- 1500V 120 VAC ENGINE BLOCK HEATER WITH THREE PRING CORD.
- CONNECTION POINTS FOR CONTROL WIRES PROVIDED IN THE LOW VOLTAGE CONNECTION BOX. BOTTOM HAS KNOCKOUTS FOR 1/2" AND 3/4" CONDUIT FITTINGS. (USE LOW VOLTAGE CONNECTION BOX.)
- BATTERY (2 VOLT NEGATIVE GROUND SYSTEM)
- MAIN LINE CIRCUIT BREAKER (M/CB) (M/CB HEIGHT MAY VARY WITH CB SELECTION) AC LOAD LEADS CONNECT DIRECTLY TO BOTTOM OF BREAKER.
- CENTER OF GRAVITY & WEIGHT MAY SHIFT SLIGHTLY DUE TO UNIT OPTIONS.
- ENGINE SERVICE CONNECTIONS:
INLET DIESEL = 3/8" NPT
RETURN DIESEL = 3/8" NPT
OIL DRAIN = 1/2" NPT
RADIATOR DRAIN = 1/2" NPT
ENGINE WATER INLET = 1/2" NPT
- GENERATOR BASE TANK REQUIRES ALL STUB-UPS TO BE IN THE REAR TANK STUB-UP AREA. DISCHARGE AIR IS NOT RECIRCULATED. SEE SPEC SHEET FOR MINIMUM AIR FLOW AND MAXIMUM RESTRICTION REQUIREMENTS.
- BOTTOM OF GENERATOR SET MUST BE CLOSED TO PREVENT PEST INTRUSION AND RECIRCULATION OF DISCHARGE AIR AND/OR IMPROPER COOLING AIR FLOW.
- BOLTS OR STUDS USED TO MOUNT UNIT TO PAD SHALL BE 5/8-11 GRADE 5. USE STANDARD SAE TORQUE SPECS.
- HIGH VOLTAGE STUB-UP AREA INCLUDES THE AC LOAD LEAD CONNECTIONS TO M/CB, DISCHARGE DUCT, DISCHARGE AIR, DISCHARGE AIR (NOTE 9), 120V LIGHT CONNECTION TO PRIMARY 120/240V CONNECTION.
- 200 GALLON USABLE CAPACITY TERTIARY SPECIAL TANK
- IT IS THE RESPONSIBILITY OF THE INSTALLATION TECHNICIAN TO ENSURE THAT THE GENERATOR INSTALLATION COMPLIES WITH ALL APPLICABLE CODES, STANDARDS, AND REGULATIONS.
- UNIT IS SHIPPED WITH FUEL SUPPLY AND RETURN LINES DISCONNECTED AND PLUGGED BETWEEN ENGINE AND FUEL TANK. THIS HAS BEEN DONE TO FACILITATE PRESSURE TESTING OF THE TANK IN THE FIELD. FOR INFORMATION REGARDING CONNECTING THE FUEL SUPPLY AND RETURN LINES FOR THIS TANK, SEE THE FUEL TANK FIELD INSTALLATION INSTRUCTIONS (PAGES 14-17) OF THE 30KW SSS L2A Y02 TANK WHICH IS SUPPLIED WITH THIS GENERATOR.
- SEE DRAWING 0807 FOR DISCHARGE DUCT REMOVAL. REMOVAL OF DUCT WILL PROVIDE ACCESS TO WELFLER FOR SERVICING.
- GENERATOR MUST BE GROUNDED



REAR VIEW (SHOWN WITH DOORS AND SIDE PANELS REMOVED)

LEFT SIDE VIEW (SHOWN WITH DUCT SIDE PANEL REMOVED)

DRAWING CREATED FROM PRO/ENGINEER 3D FILE. ECD MODIFICATION TO BE APPLIED TO SOLID MODEL ONLY.

PRELIMINARY USE ONLY

GENERAC POWER SYSTEMS, INC. IS THE DESIGNER OF THIS DRAWING. ANY DIMENSIONS SHOWN ARE APPROXIMATE. DIMENSIONS SHALL BE BASED ON THE 30KW SSS L2A Y02 TANK WHICH IS SUPPLIED WITH THIS GENERATOR. © GENERAL POWER SYSTEMS 2014

ELECTRICIALLY APPROVED
INST. WINCHILL

SCALE 0.025 WT-KG SEE ABOVE SHEET 1 of 1

ISSUE DATE: 08072020

SIZE B N/A

CAGE NO DWG NO

INSTALL D22L G22
30KW SSS L2A Y02
200 UL TERTIARY SPECIAL TANK

TITLE

GENERAC