

ATTACHMENT 1

Radio Frequency Analysis Report

CT1458
1837 Ponus Ridge Road, New Canaan, CT



November 18, 2021



C Squared Systems, LLC
65 Dartmouth Drive, A3
Auburn, NH 03032

Phone: (603) 644-2800
Fax: (603) 644-2801
Support@csquaredsystems.com

Table of Contents

1. Overview..... 1

2. Technology Advances & Design Evolution 1

3. Coverage Objective..... 3

4. Conclusion..... 6

5. Statement of Certification 6

6. Attachments 7

List of Tables

Table 1: Coverage Statistics..... 5

List of Attachments

Attachment 1: CT1458 - Area Terrain Map..... 7

Attachment 2: CT1458 - Neighbor Site Data 9

Attachment 3: CT1458 - Existing 700 MHz LTE Coverage” for the Current AT&T Network 10

Attachment 4: CT1458 - Existing 700 MHz LTE Coverage with Proposed Site” for the AT&T Network 11

Attachment 5: Connecticut DOT Average Annual Daily Traffic Data – New Canaan 12

1. Overview

C Squared Systems was retained by New Cingular Wireless PCS, LLC (“AT&T”) to evaluate the proposed wireless communications facility at 1837 Ponus Ridge Road, New Canaan, CT at 106 feet AGL.

AT&T is licensed by the FCC to provide wireless communications services throughout the State of Connecticut including the Town of New Canaan where the proposed facility would be located.

This report addresses AT&T’s need for the proposed wireless facility and confirms that there are no other suitable existing structures available that could address the coverage gaps in their wireless communications network.

The coverage analysis completed by C Squared Systems confirms: AT&T has a gap in reliable service in northwest New Canaan, and that the Proposed Facility provides AT&T with coverage in that service gap. Included as attachments in this report are coverage maps detailing the existing network and expected coverage from the proposed facility, pertinent site information, terrain and network layout maps.

2. Technology Advances & Design Evolution

AT&T provides digital voice and data services using 3rd Generation (3G) UMTS technology in the 800 MHz and 1900 MHz frequency band, and advanced 4th Generation (4G) services over LTE technology in the 700 MHz and 1900 MHz frequency bands as allocated by the FCC. These data networks are used by mobile devices for fast web browsing, media streaming, and other applications that require broadband connections. The mobile devices that benefit from these advanced data networks are not limited to basic handheld phones, but also include devices such as smartphones, PDA’s, tablets, and laptop air-cards. 4G LTE services and devices have enabled AT&T customers to have even faster connections to people, information, and entertainment.

AT&T will also deploy FirstNet services from this facility. FirstNet is a federal agency with a mandate to create a nationwide, interoperable public safety broadband network for first responders. First responders across the country currently rely on more than 10,000 separate radio networks which oftentimes do not interoperate with one another. By deploying a nationwide broadband public safety network built specifically to meet the communications needs of first responders, the FirstNet network will provide a solution to the decades-long interoperability and communications challenges first responders have experienced, and which was highlighted by the 9/11 Commission’s 2004 Final Report.

FirstNet selected AT&T to build, manage and operate the National Public Safety Broadband Network (“NPSBN”) using FirstNet’s Band 14 spectrum (Call Sign WQQE234, 20 MHz of the 700 MHz spectrum), together with AT&T’s own wireless network. Using a combination of new and existing wireless facilities, AT&T provides prioritized, preemptive wireless services for first responders across Connecticut, New England and nationwide, while also improving 4G LTE coverage for AT&T customers.

It is important to note that with AT&T’s migration from 3G to 4G services come changes in the base station infrastructure and resultant changes in the operating thresholds required by the LTE network. In the past, AT&T has presented receive signal thresholds of -74 dBm for their in-building coverage threshold and -82 dBm for their in-vehicle coverage threshold. Those thresholds were based on network requirements to support 2G/3G data speeds and past usage demand. Today, customers expect low latency and faster data speeds as evidenced by increasing data usage trends and customer demand.

AT&T's 4G LTE technology is designed to thresholds of -83 dBm and -93 dBm for their 700 MHz LTE and -86 dBm and -96 dBm for their 1900 MHz LTE.¹ The stronger thresholds (-83 dBm and -86 dBm) yield greater throughputs and improved customer experience. The -93 dBm and -96 dBm thresholds are the minimum acceptable levels required to meet customer expectations for 4G service.

¹The threshold range differences between the 700 MHz and 1900 MHz frequency bands directly correlates to the type of branch diversity receivers deployed in AT&T's receiver design.

3. Coverage Objective

There is a significant coverage deficiency in the existing AT&T wireless communications network along Ponus Ridge Road, Dan's Highway, High Ridge Road (Route 137) as well as other roads in the area and in the vicinity of the proposed location, referred to herein as the "targeted area". A deficiency in coverage is evidenced by the inability to adequately and reliably transmit/receive quality calls and/or utilize data services offered by the network. Seamless reliable coverage provides users with the ability to successfully originate, receive, and maintain quality calls and data applications throughout a service area. Appropriate overlapping coverage is required for users to be able to move throughout the service area and reliably "hand-off" between cells to maintain uninterrupted connections.

Due to terrain characteristics and the distance between the targeted area and the existing sites, AT&T's options to provide services in this area are quite limited (maps of the terrain in this area and the distance to neighboring AT&T sites from the proposed site are included as Attachments 1 & 2, respectively). AT&T's network requires deployment of antennas throughout the area to be covered. These antennas are connected to receivers and transmitters that operate in a limited geographic area known as a "cell." AT&T's wireless network, including their wireless handsets and devices, operate by transmitting and receiving low power radio frequency signals to and from these cell sites. The signals are transferred to and from the landline telephone network and routed to their destinations by sophisticated electronic equipment. The size of the area served by each cell site is dependent on several factors, including the number of antennas used, the height at which the antennas are deployed, the topography of the land, vegetative cover and natural or man-made obstructions in the area. As customers move throughout the service area, the transmission from the portable devices is automatically transferred to the AT&T facility with the best connection to the device, without interruption in service provided that there is overlapping coverage from the cells.

In order to define the extent of the coverage gap to be filled, both propagation modeling and real-world drive testing has been conducted in the area of New Canaan. Propagation modeling uses PC software to determine the network coverage based on the specific technical parameters of each site including, but not limited to, location, ground elevation, antenna models, antenna heights, and also databases of terrain and ground cover in the area. Drive testing consists of traveling along area roadways in a vehicle equipped with a sophisticated setup of test devices and receivers that collect a variety of network performance metrics. The data are then processed and mapped in conjunction with the propagation modeling to determine the coverage gaps.

Analysis of the propagation modeling and drive testing in New Canaan reveal that AT&T's network is unreliable throughout much of the area due to gaps in coverage, and that there is a service deficiency as a result. In order to fill in these coverage gaps and improve the network reliability to New Canaan, a new facility is needed in the area.

Included in this report are Attachments 1 through 5, which are explained below to help describe AT&T's 4G network deployment in and around New Canaan, and the need for the proposed facility.

- Attachment 1: “*CT1458 Area Terrain Map*” details the terrain features around the area of deficient service being targeted by the proposed site in New Canaan. These terrain features play a key role in determining site designs and dictating the unique coverage achieved from a given location. This map is included to provide a visual representation of the ridges and valleys that must be considered when siting a wireless facility. The darker green, blue and purple shades correspond to lower elevations, whereas the orange, red and white shades indicate higher elevations.
- Attachment 2: “*CT1458 Neighbor Site Data*” provides site specific information of existing neighboring sites used to perform the coverage analysis provided in Attachments 1 and 4.
- Attachment 3: “*CT1458 Existing 700 MHz LTE Coverage for the Current AT&T Network*” depicts 700 MHz LTE coverage from existing sites and demonstrates that there are currently gaps in 700 MHz LTE coverage effecting service within the targeted area. The coverage shown is where the signal strengths are: > -83 dBm (minimum level required reliable, high quality service and performance at 700 MHz) and, > -93 dBm (minimum required for adequate level of service at 700 MHz). In an effort to provide the required levels of coverage to these areas, AT&T is proposing to install a wireless facility at the Soundview Lane location.
- Attachment 4: “*CT1458 Existing 700 MHz LTE Coverage with Proposed Site*” shows how this proposed site would fill in the existing coverage gaps and improve AT&T's 700 MHz LTE network.
- Attachment 5: Connecticut DOT Average Annual Daily Traffic Data – New Canaan shows the available vehicular traffic volume data for the subject area from the Connecticut Department of Transportation. These data show as many as 1,200 vehicles per day passing through Ponus Ridge Road in the vicinity of the proposed facility.

Table 1 below lists the coverage statistics compiled for the AT&T's 700 MHz 4G LTE network with the deployment of the Proposed Site.

	Incremental Coverage from Proposed Site (700 MHz)	
Population:²	(\geq -83 dBm)	476
	(\geq -93 dBm)	1,690
Business Pops:³		
	(\geq -83 dBm)	48
	(\geq -93 dBm)	127
Area (mi²):		
	(\geq -83 dBm)	1.47
	(\geq -93 dBm)	3.72
Roadway (mi):		
	Main (-93 dBm):	1.9
	Secondary (-93 dBm):	16.3
	Total (-93 dBm):	18.2

Table 1: Coverage Statistics

² Population figures are based upon 2010 US Census Block Data

³ Employee population counts are based upon the 2011 U.S. Census Bureau LEHD database.

4. Conclusion

AT&T has identified an area of deficient coverage affecting a significant portion of New Canaan CT, including key traffic corridors through the residential and business/retail areas of the Town. The proposed New Canaan facility will bring the needed fill-in coverage to significant portions of Ponus Ridge Road, Dan's Highway, High Ridge Road (Route 137) as well as other roads in the area and to the vicinity of the proposed location.

No existing structures were identified and available that would be able to satisfy the coverage requirements needed for this area.

As discussed in this report and depicted in the attached plots, the proposed interim AT&T site will provide a substantial portion of the coverage being lost to the "Targeted Area" while maintaining effective connectivity to the rest of AT&T's existing network and, facilitate the transparent migration from its 3G to 4G network.

5. Statement of Certification

I certify to the best of my knowledge that the statements in this report are true and accurate.

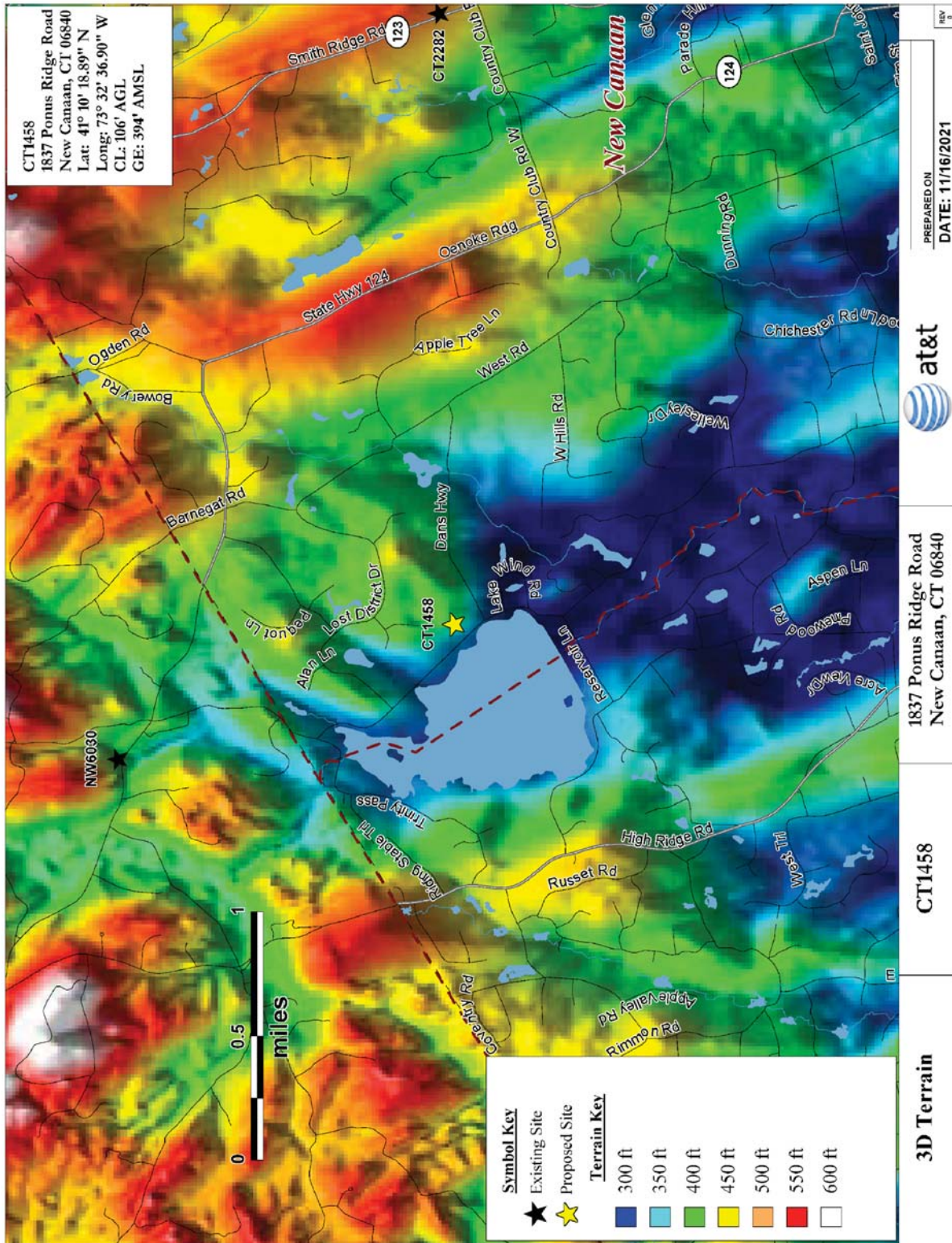


Martin J. Lavin
C Squared Systems, LLC

November 18, 2021

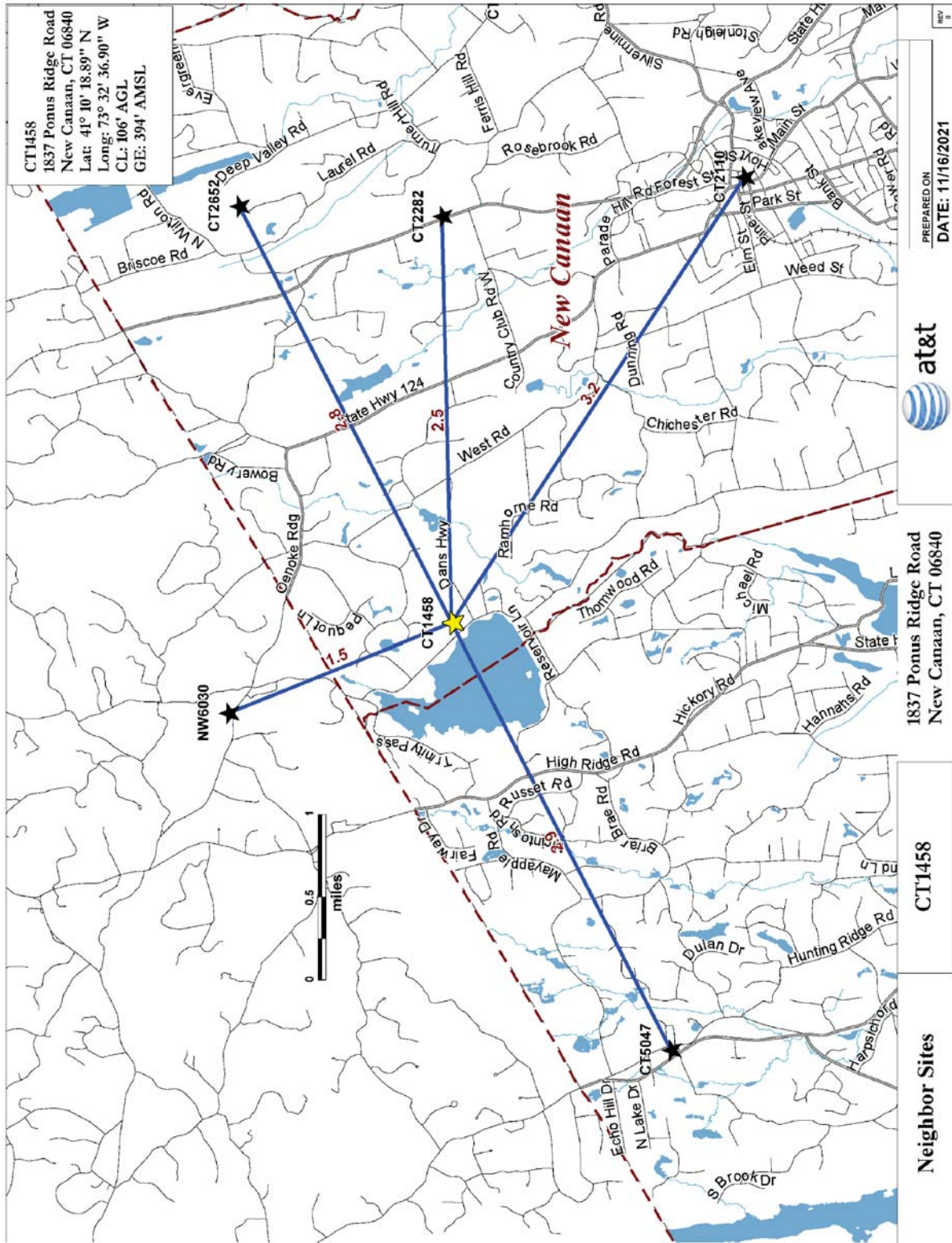
Date

6. Attachments

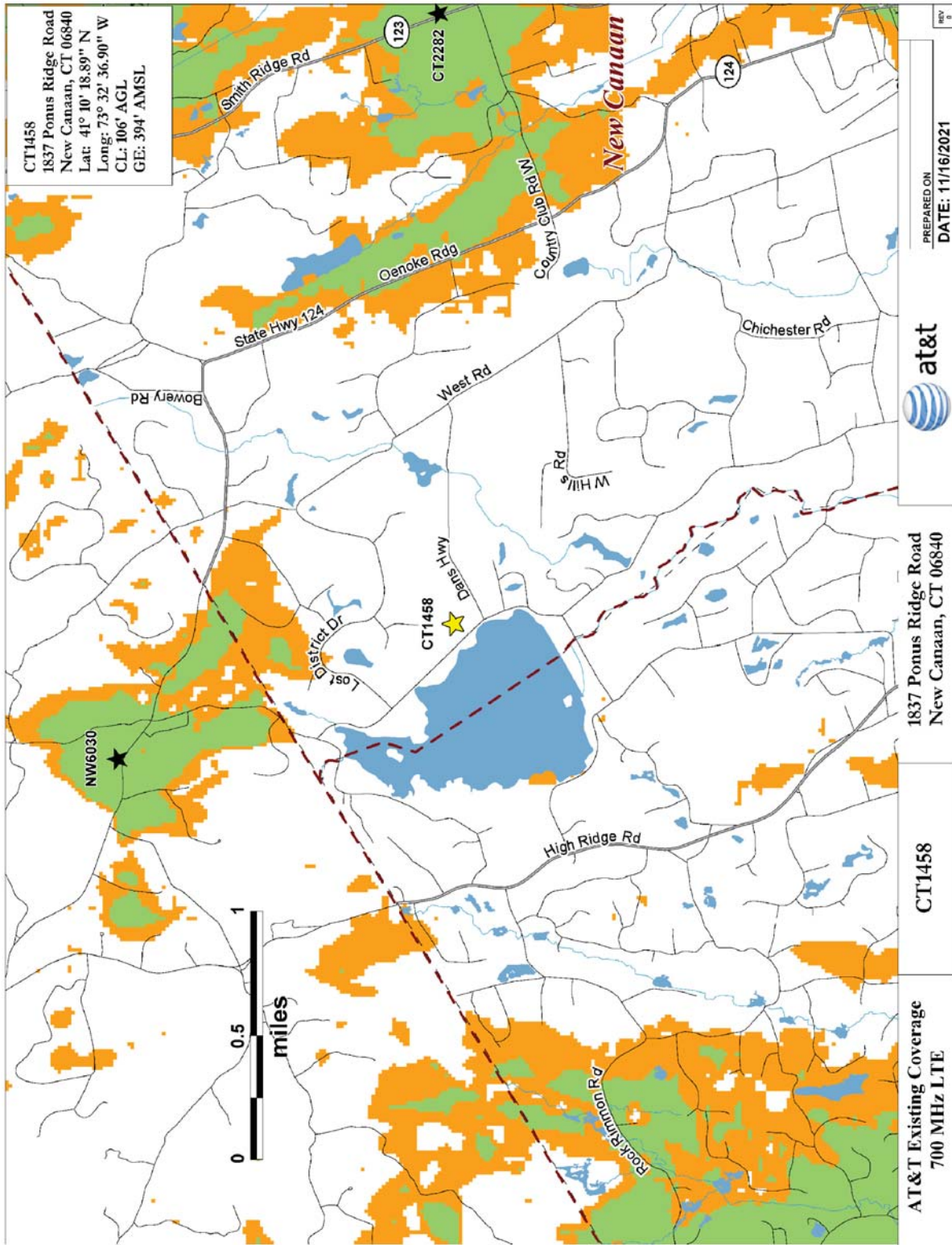


Attachment 1: CT1458 - Area Terrain Map

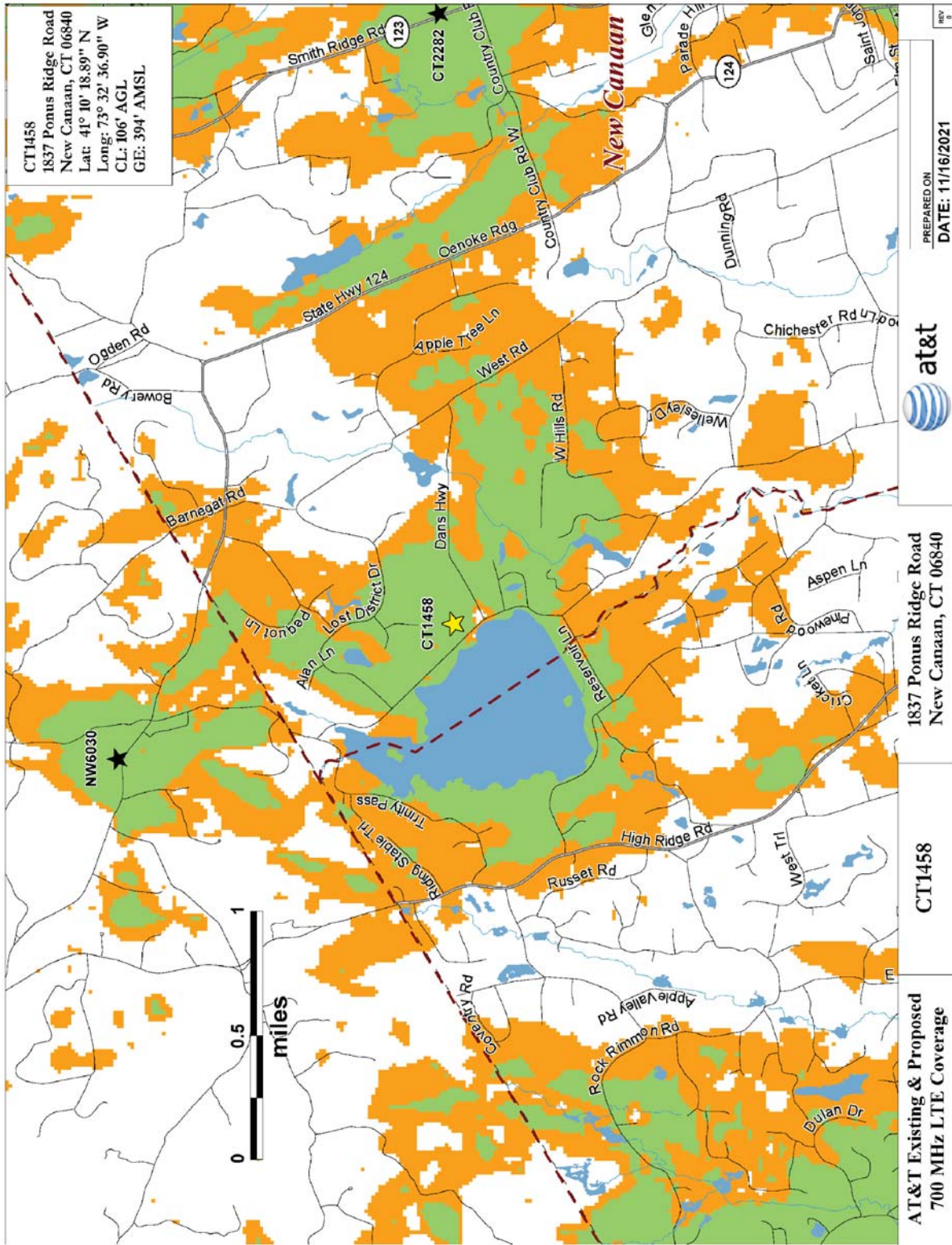
Site Name	Address	City/State	Latitude	Longitude	Antenna Height (ft AGL)	Ground Elevation	Distance (miles)
CT2282	95 Country Club Road	New Canaan	41.1729	-73.4963	89	495	2.5
CT2652	183 Soundview Lane	New Canaan	41.1907	-73.4952	81	502	2.8
NW6030	89 Westchester Ave	Pound Ridge	41.1916	-73.5540	85	394	1.5
CT5047	366 Old Long Ridge Road	Stamford	41.1528	-73.5931	148	423	2.9
CT2110	135 Main Street	New Canaan	41.1464	-73.4917	44	272	3.2



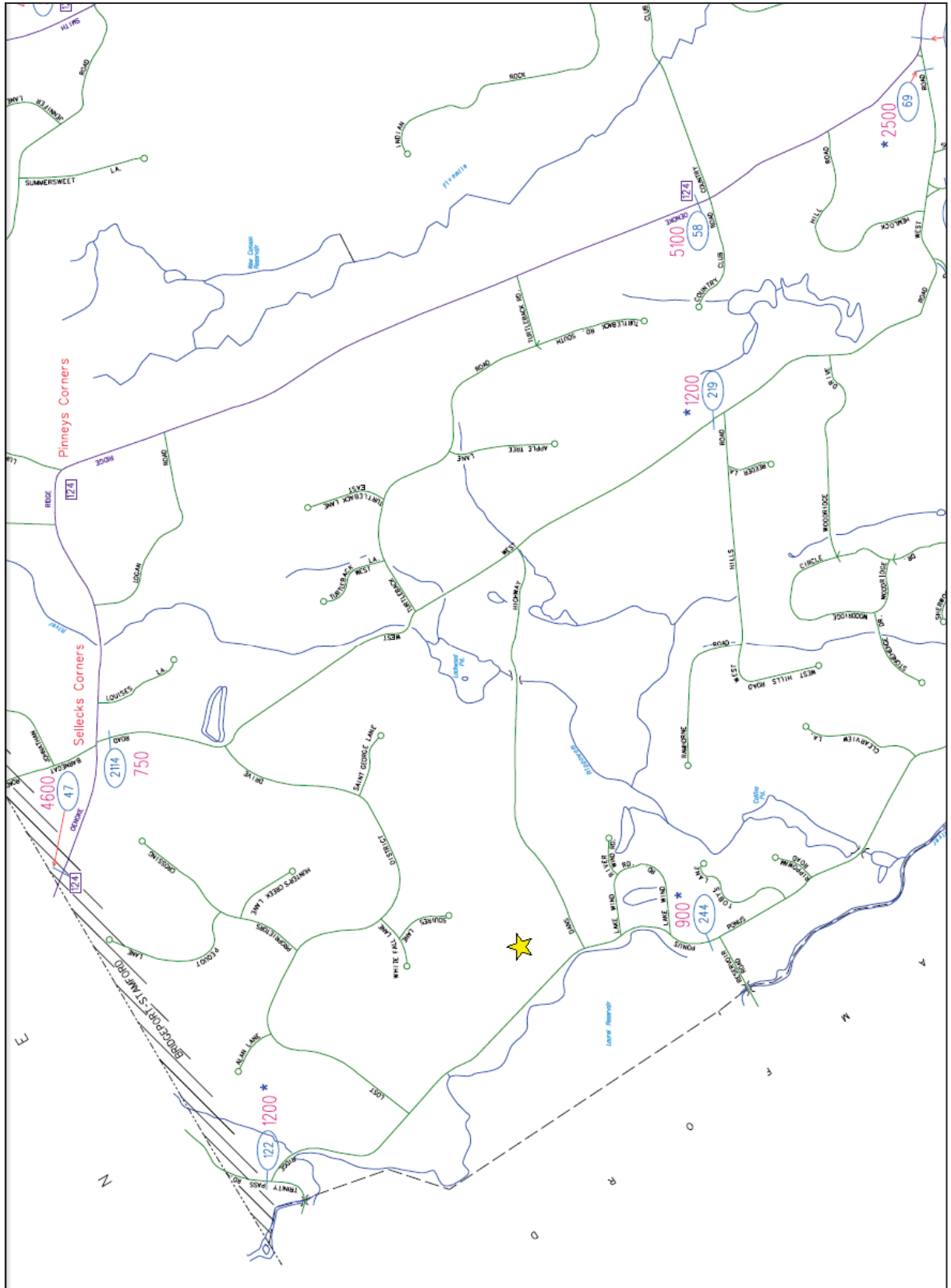
Attachment 2: CT1458 - Neighbor Site Data



Attachment 3: CT1458 - Existing 700 MHz LTE Coverage” for the Current AT&T Network



Attachment 4: CT1458 - Existing 700 MHz LTE Coverage with Proposed Site” for the AT&T Network



Attachment 5: Connecticut DOT Average Annual Daily Traffic Data – New Canaan