



STATE OF CONNECTICUT
CONNECTICUT SITING COUNCIL

Ten Franklin Square, New Britain, CT 06051

Phone: (860) 827-2935 Fax: (860) 827-2950

E-Mail: siting.council@ct.gov

Web Site: portal.ct.gov/csc

VIA ELECTRONIC MAIL

May 6, 2024

Bruce McDermott, Esq.
Murtha Cullina LLP
One Century Tower
265 Church Street, 9th floor
New Haven, CT 06510-1220
bmcdermott@murthalaw.com

RE: **DOCKET NO. 508** – The United Illuminating Company (UI) Certificate of Environmental Compatibility and Public Need for the Milvon to West River Railroad Transmission Line 115-kV Rebuild Project that consists of the relocation and rebuild of its existing 115- kilovolt (kV) electric transmission lines from the railroad catenary structures to new steel monopole structures and related modifications to facilitate interconnection of the rebuilt 115-kV electric transmission lines at UI's existing Milvon, Woodmont, Allings Crossing, Elmwest and West River substations along approximately 9.5 miles of the Connecticut Department of Transportation's Metro-North Railroad corridor traversing the municipalities of Milford, Orange, West Haven and New Haven, Connecticut. **Partial Development and Management (D&M) Plan I - Segment 1-Revision.**

Dear Attorney McDermott:

The Connecticut Siting Council (Council) is in receipt of your correspondence dated May 3, 2024, regarding a revision to Partial Development and Management (D&M) Plan I – Segment 1 for the above-referenced facility that was approved by the Council on June 8, 2023.

Pursuant to Regulations of Connecticut State Agencies (RCSA) §16-50j-62(b), your request to perform the following is hereby approved:

- a) Eliminate the central matted access road through the West Haven Compost Facility and associated matted branches within the western portion of Wetland WH-W12; and
- b) Reconfigure the eastern matted access in Wetland WH-W12 by utilizing a T-shaped matted access in lieu of the Y-shaped matted access.

This approval applies only to the Partial D&M Plan I – Segment 1 revision in the correspondence dated May 3, 2024.

Please be advised that deviations from the Council's Decision and Order and D&M Plan approvals are enforceable under the provisions of Connecticut General Statutes § 16-50u. Furthermore, the Certificate Holder is responsible for reporting requirements pursuant to RCSA §16-50j-62.

Thank you for your attention and cooperation.

Sincerely,

A handwritten signature in dark ink, appearing to read "Melanie A. Bachman". The signature is fluid and cursive, with a long horizontal stroke at the end.

Melanie A. Bachman
Executive Director

MB/MP



May 3, 2024

Melanie A. Bachman, Esq.
Executive Director/Staff Attorney
Connecticut Siting Council
10 Franklin Square
New Britain, CT 06051

Re: Docket No. 508 - The United Illuminating Company Application for a Certificate of Environmental Compatibility and Public Need for the Milvon to West River Railroad Transmission Line 115-kV Rebuild Project – Notice for Modification to Matting on Inland Wetland WH-W12

Dear Ms. Bachman:

Pursuant to the Regulations of Connecticut State Agencies Section 16-50j-62(b)(2) and Attachment M to the project's Development & Management Plan, The United Illuminating Company ("UI") is hereby submitting a request for a deviation to the Connecticut Siting Council (the "Council"). The deviation will occur within wetland WH-W12 and associated with temporary matting/hardware removal on the south side of the Metro-North Railway, west side of the West River.

Matting adjustments, located in the wetland identified as WH-W12, are needed due to site conditions, equipment maneuverability/capabilities, and access within the West Haven Compost Facility. Based on these concerns, UI plans to implement the following modifications and asks that the Council approve the same;

- A. Eliminate the central matted access road through the West Haven Compost Facility and associated matted branches within the western portion of wetland WH-W12.
- B. Reconfigure the eastern matted access in wetland WH-W12.

The above modifications result in a net reduction of impacts to inland wetland WH-W12 of ~479 sq.ft. UI will proceed with the modifications following Siting Council approval. Erosion and sedimentation controls, including seeding, will be implemented prior to implementation and following removal of the temporary matting, as needed and in compliance with the Projects SWPCP and Segment I D&M Plan.

Changes implemented in this area are within UI's work pad and/or the CTDOT ROW, as denoted in the General Access Plans. Erosion and sedimentation controls specified within the Segment 1 Development and Management Plan will be installed. Changes do *not* include the construction or placement of temporary structures or equipment, will *not* change a structure type or location; and will *not* use additional or eliminate mitigation measures.



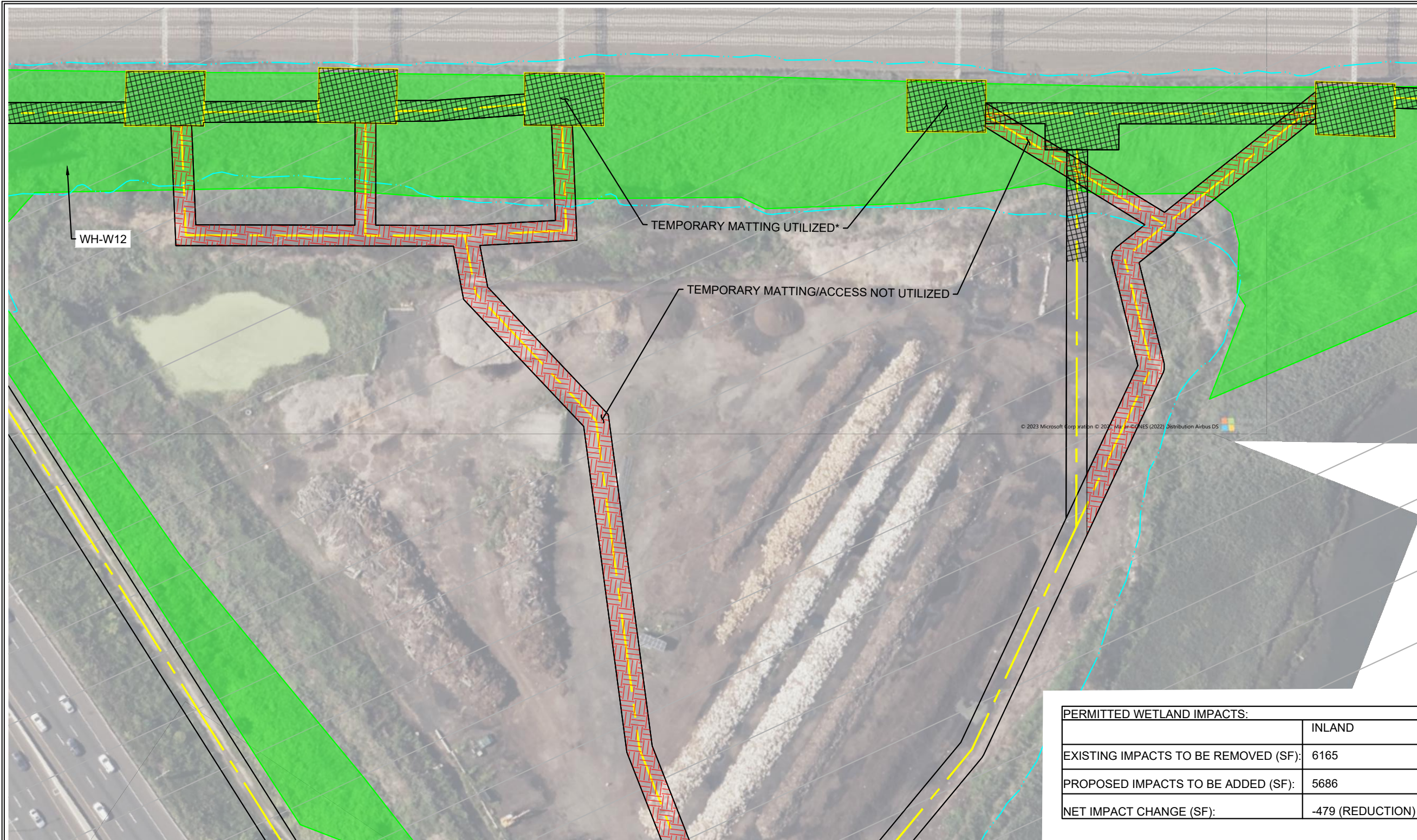
Should the Council have any questions regarding this filing, please do not hesitate to contact me.

Very truly yours,

A handwritten signature in blue ink, appearing to read 'Paul J Kenline', is written in a cursive style.

Paul Kenline
Project Manager, pkenline@uinet.com

DRAWING NAME: V:\Data\U\UNIT1 - THE UNITED ILLUMINATING COMPANY\MILFORD TO NEW HAVEN, CT\UNI9212\EE\CAD\MCPHEE FIELD CHANGES\PROPOSED ZOOMED\PROPOSED ZOOMED.dwg LAYOUT: PROPOSED WH COMPOST PLOT DATE: May 03, 2024 - 9:39am OPERATOR: ASB



- EXISTING TRANSMISSION STRUCTURE FOR REMOVAL
- PROPOSED TRANSMISSION POLE
- P-POH PROPOSED TRANSMISSION CENTER LINE
- PROPOSED TEMPORARY ACCESS ROAD

- LEGEND**
- PROPOSED WORK/PULLING CONSTRUCTION AREA
 - FIELD DELINEATED TIDAL WETLAND
 - FIELD DELINEATED WETLAND
 - FLOODPLAIN

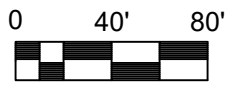
- TREE CLEARING
- NATURAL DIVERSITY DATABASE AREA
- TEMPORARY MATTING/ACCESS NOT UTILIZED
- TEMPORARY MATTING UTILIZED

PERMITTED WETLAND IMPACTS:	
	INLAND
EXISTING IMPACTS TO BE REMOVED (SF):	6165
PROPOSED IMPACTS TO BE ADDED (SF):	5686
NET IMPACT CHANGE (SF):	-479 (REDUCTION)

NOTES:
 1. BASE PLANS PREPARED BY WESTWOOD PROFESSIONAL SERVICES, 12/15/2022, LAST REVISED 03/10/2023.
 *ALL PRESENTED AREAS OF TEMPORARY MATTING ARE APPROXIMATE AND BASED ON FIELD OBSERVATIONS AND MEASUREMENTS TAKEN BY UI.



197 SCOTT SWAMP ROAD
 FARMINGTON, CT 06032
 (860) 674-9570
 HRPASSOCIATES.COM



REVISIONS	
NO.	DATE

DESIGNED BY:	UI
DRAWN BY:	WW/ASB
REVIEWED BY:	
ISSUE DATE:	05/03/2024
PROJECT NUMBER:	UNI9212.EE
SHEET SIZE:	11"X17"

WEST HAVEN COMPOST FACILITY
 - ACTUAL
 MILVON TO WEST RIVER RAILROAD TRANSMISSION LINE 115KV REBUILD PROJECT
 MILFORD, ORANGE, WEST HAVEN, NEW HAVEN, CONNECTICUT

SHEET NO.
C1.1