



September 9, 2024

Ms. Melanie Bachman, Executive Director  
Connecticut Siting Council  
10 Franklin Square  
New Britain, CT 06051

RE: **Docket No. 508:** Milvon to West River Railroad Transmission Line 115kV Rebuild Project  
Notification of Completion of Construction and Commencement of Operation-Segment 1 (Elmwest Substation to West River Substation)

Dear Ms. Bachman,

Pursuant to the Regulations of Connecticut State Agencies section 16-50j-62(b)(3) and as described in the Milvon to West River Railroad Transmission Line 115kV Rebuild Project Partial Development and Management (D&M) Plan approval, dated June 8, 2023, The United Illuminating Company hereby provides to the Connecticut Siting Council ("Council") this Notification of Completion of Construction and Commencement of Operation for Segment 1 (Elmwest Substation to West River Substation).

Construction of Segment 1 was completed on July 9<sup>th</sup>, 2024. Circuits were put into service on June 6<sup>th</sup>, 2024. Additionally, representative photographs of the completed Segment are attached. An Operation Report shall be provided within three (3) months after the conclusion of the first year of operation of *all* facilities (Segments 1-4) with information relevant to the overall condition, safety, reliability, and operation of the new transmission line. Additionally, and within 12 months of the Project in-service date of *all* facilities (Segments 1-4) an Electric and Magnetic Field (EMF) Monitoring Plan, along with the as-measured model comparisons to predict values post-construction, will be provided to the Council.

The final stormwater stabilization inspection for Segment 1 will be completed following one (1) full growing season or two (2) subsequent seeding seasons in the year following construction. Segment 1 will be considered "active" on a stormwater stabilization perspective. Inspections will be continued as specified in the CTDEEP General Permit for the Discharge of Stormwater and Dewatering Wastewaters from Construction Activities (SWCGP) and the Stormwater Pollution Control Plan (SWPCP) until final stabilization is achieved.

Should you or the Council members have any questions regarding this submission, please do not hesitate to contact me via e-mail at [phenline@uinet.com](mailto:phenline@uinet.com).

Respectfully,

A handwritten signature in blue ink, appearing to read 'Paul Kenline', is written over a horizontal line.

Paul Kenline  
Project Manager

Enclosure



**CSC DOCKET #508 MILVON TO WEST RIVER RAILROAD TRANSMISSION LINE 115 KV  
REBUILD-SEGMENT 1**



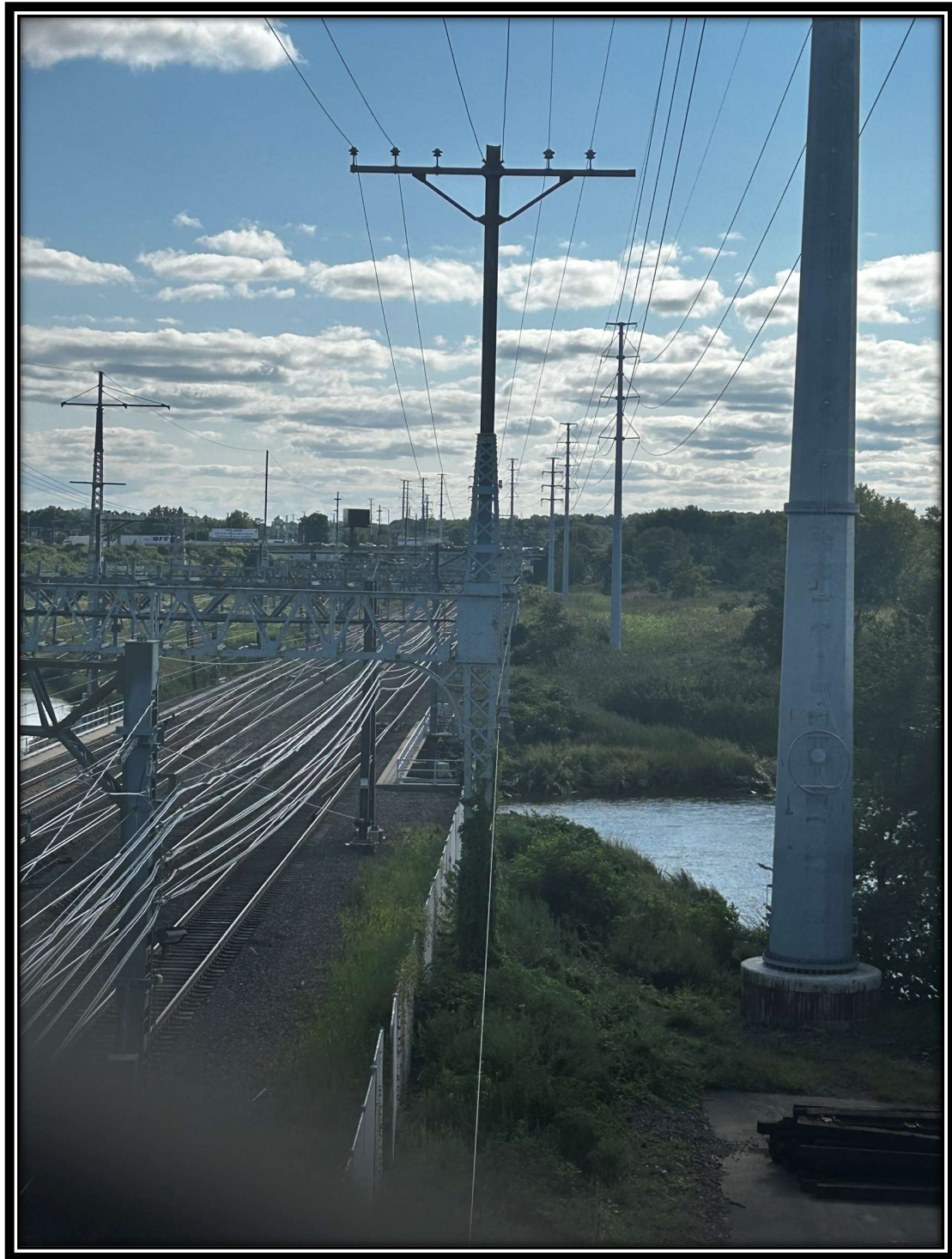
*West River Substation-Interior*

**Commencement of Operation and Construction Completion**





**CSC DOCKET #508 MILVON TO WEST RIVER RAILROAD TRANSMISSION LINE 115 KV  
REBUILD-SEGMENT 1**



*Completed North Side Line Rebuild-Facing South and the West River*

**Commencement of Operation and Construction Completion**



**CSC DOCKET #508 MILVON TO WEST RIVER RAILROAD TRANSMISSION LINE 115 KV  
REBUILD-SEGMENT 1**



*Completed South Side Line Rebuild-Facing South and the West River*

**Commencement of Operation and Construction Completion**





**CSC DOCKET #508 MILVON TO WEST RIVER RAILROAD TRANSMISSION LINE 115 KV  
REBUILD-SEGMENT 1**



*Completed North Side Line Rebuild-Facing S/SW. Materials stored in this area are related to the operations in this area and are unrelated to UI.*

**Commencement of Operation and Construction Completion**





**CSC DOCKET #508 MILVON TO WEST RIVER RAILROAD TRANSMISSION LINE 115 KV  
REBUILD-SEGMENT 1**



*Completed North Side Line Rebuild-Facing N/NE towards West River*

**Commencement of Operation and Construction Completion**





**CSC DOCKET #508 MILVON TO WEST RIVER RAILROAD TRANSMISSION LINE 115 KV  
REBUILD-SEGMENT 1**

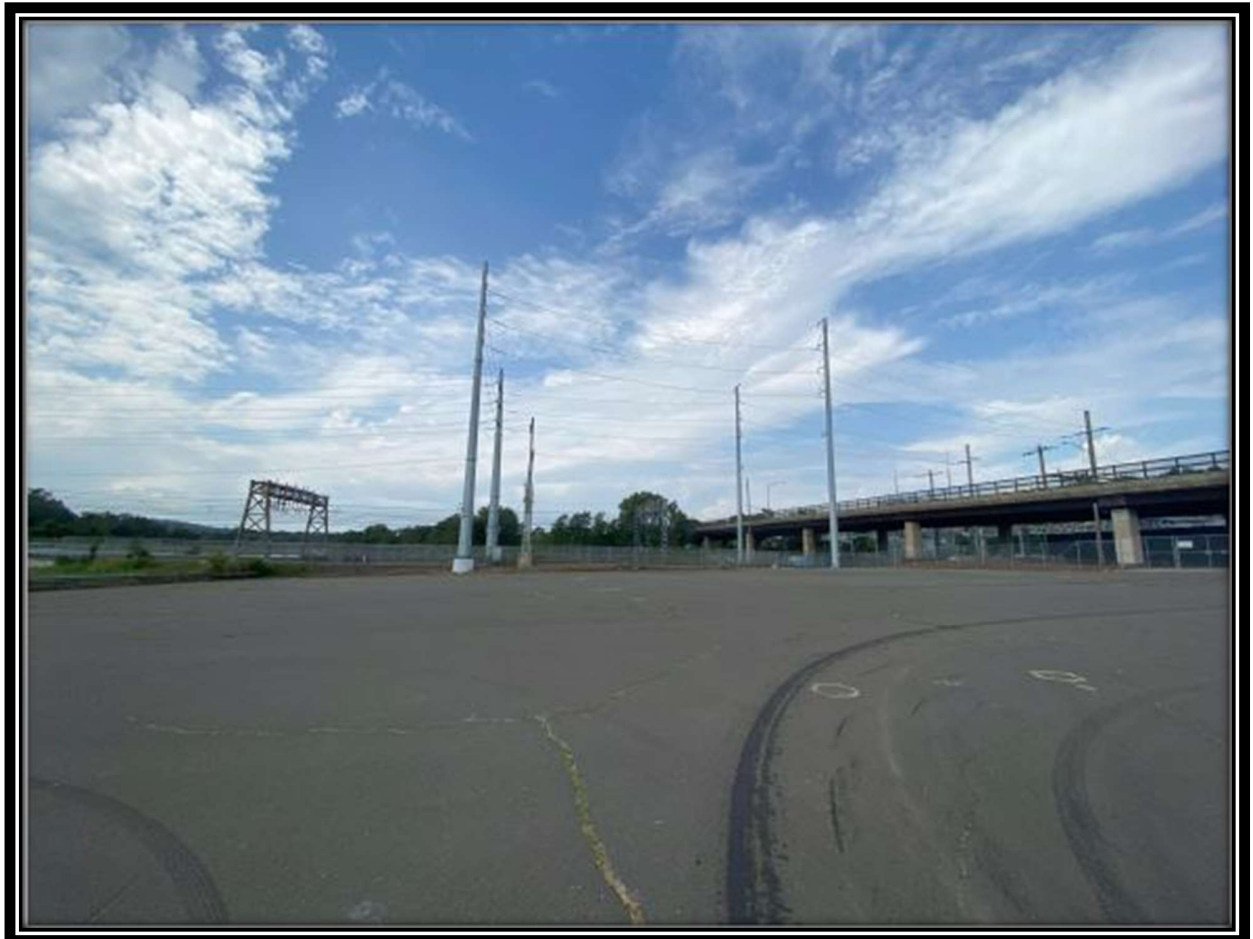


*Completed North Side Line Rebuild-Facing N/NE towards West River*

**Commencement of Operation and Construction Completion**



**CSC DOCKET #508 MILVON TO WEST RIVER RAILROAD TRANSMISSION LINE 115 KV  
REBUILD-SEGMENT 1**



*Completed South Side Line Rebuild-Facing North*

**Commencement of Operation and Construction Completion**





**CSC DOCKET #508 MILVON TO WEST RIVER RAILROAD TRANSMISSION LINE 115 KV  
REBUILD-SEGMENT 1**



*Completed North Side Line Rebuild-Facing S/SW*

**Commencement of Operation and Construction Completion**



**CSC DOCKET #508 MILVON TO WEST RIVER RAILROAD TRANSMISSION LINE 115 KV  
REBUILD-SEGMENT 1**



*Completed North Side Line Rebuild-Facing N/NE*

**Commencement of Operation and Construction Completion**





**CSC DOCKET #508 MILVON TO WEST RIVER RAILROAD TRANSMISSION LINE 115 KV  
REBUILD-SEGMENT 1**



*Completed North Side Line Rebuild-Facing N/NE*

**Commencement of Operation and Construction Completion**