

**RESPONSE TO MILFORD INTERROGATORIES 4 & 5
OPTION 4 & UNDERGROUND CONFIGURATION**



The United Illuminating Company

City of Milford,
Town of Orange,
City of West Haven,
City of New Haven

**MILVON-WEST RIVER
RAILROAD TRANSMISSION LINE 115-KV REBUILD PROJECT**

ATTACHMENT MIL 1-4-1





Legend

- Existing Catenary and Bonnet
- Project Transmission Line
- Year-Round Visibility (110 Acres)
- Areas of Potential Seasonal Visibility (72 Acres)
- Study Area (1 Mile Radius)
- Municipal Boundary
- Scenic Highway*
- Trail*
- DEEP Boat Launches*
- Municipal and Private Open Space Property
- State Forest/Park

Protected Open Space Property

- Federal*
- Land Trust*
- Municipal*
- Private*
- State*

1,000 500 0 1,000 Feet

Limitations

This map depicts areas where existing catenary bonnets may potentially be visible to the human eye without the aid of magnification based on a viewer eye-height of 5 feet above the ground and intervening topography, tree canopy, and other existing structures. This analysis is based on a combination of computer modeling, incorporating the DSM, and 2019 digital aerial photographs.

This analysis does not necessarily depict all locations where views may occur. It is intended to provide a representation of those areas where at least a portion of the existing electrical facilities may be seen, but may actually over-predict visibility in some locations.

Physical Geography / Background Data

Study area encompasses a 1-mile radius surrounding the existing catenaries and includes 2,675 acres. A digital surface model (DSM) was created from the State of Connecticut 2016 LIDAR LAS data points. The DSM captures the natural and built features on the Earth's surface. Forest canopy height derived from LIDAR data.

Map Sources

*Not all data layers appear on map sheet.
 Ortho Base Map: State of Connecticut 2019 aerial imagery (CTECO Map Service)
 CTDEEP's data library (<http://www.ct.gov/deep>)
 Data layers are maintained and updated by CTDEEP and represent the most recent publications.
 Scenic Roads: CTDOT State Scenic Highways (2015)
 Connecticut Forest and Parks Association, Connecticut Walk Books East and West

Map Date: May 2022

Docket 508
Response to Milford Interrogatory 4
Existing Conditions Viewshed Analysis Map
Catenary Structures Numbers 905 N/S - 914 N/S, Milford, CT
Milvon-West River Railroad Transmission
Line 115-kV Rebuild Project



Legend

- Proposed Monopole
- Project Transmission Line
- Year-Round Visibility (188 Acres)
- Areas of Potential Seasonal Visibility (155 Acres)
- Study Area (1 Mile Radius)
- Municipal Boundary
- Scenic Highway*
- Trail*
- DEEP Boat Launches*
- Municipal and Private Open Space Property
- State Forest/Park

Protected Open Space Property

- Federal*
- Land Trust*
- Municipal*
- Private*
- State*

Scale: 1,000 500 0 1,000 Feet

Limitations

This map depicts areas where proposed monopoles may potentially be visible to the human eye without the aid of magnification based on a viewer eye-height of 5 feet above the ground and intervening topography, tree canopy, and other existing structures. This analysis is based on a combination of computer modeling, incorporating the DSM, and 2019 digital aerial photographs.

This analysis does not necessarily depict all locations where views may occur. It is intended to provide a representation of those areas where at least a portion of the new monopoles may be seen, but may actually over-predict visibility in some locations.

Physical Geography / Background Data



Study area encompasses a 1-mile radius surrounding the existing catenaries and includes 2,675 acres. A digital surface model (DSM) was created from the State of Connecticut 2016 LIDAR LAS data points. The DSM captures the natural and built features on the Earth's surface. Forest canopy height derived from LIDAR data.

Map Sources

*Not all data layers appear on map sheet.
 Ortho Base Map: State of Connecticut 2019 aerial imagery (CTECO Map Service)
 CTDEEP's data library (<http://www.ct.gov/deep>)
 Data layers are maintained and updated by CTDEEP and represent the most recent publications.
 Scenic Roads: CTDOT State Scenic Highways (2015)
 Connecticut Forest and Parks Association, Connecticut Walk Books East and West

Map Date: May 2022

Docket 508
Response to Milford Interrogatory 4
Viewshed Analysis Map
Proposed Monopoles Numbers 905 - 914, Milford, CT
Milvon-West River Railroad Transmission
Line 115-kV Rebuild Project



Legend

- Catenary Bonnet Rebuild
- Project Transmission Line
- Year-Round Visibility (114 Acres)
- Areas of Potential Seasonal Visibility (72 Acres)
- Study Area (1 Mile Radius)
- Municipal Boundary
- Scenic Highway*
- Trail*
- DEEP Boat Launches*
- Municipal and Private Open Space Property
- State Forest/Park

Protected Open Space Property

- Federal*
- Land Trust*
- Municipal*
- Private*
- State*

Scale: 1,000 500 0 500 1,000 Feet

Limitations

This map depicts areas where potential rebuilt catenary bonnets (25' taller than existing catenary bonnets) may potentially be visible to the human eye without the aid of magnification based on a viewer eye-height of 5 feet above the ground and intervening topography, tree canopy, and other existing structures. This analysis is based on a combination of computer modeling, incorporating the DSM, and 2019 digital aerial photographs.

This analysis does not necessarily depict all locations where views may occur. It is intended to provide a representation of those areas where at least a portion of the proposed electrical facilities may be seen, but may actually over-predict visibility in some locations.

Physical Geography / Background Data

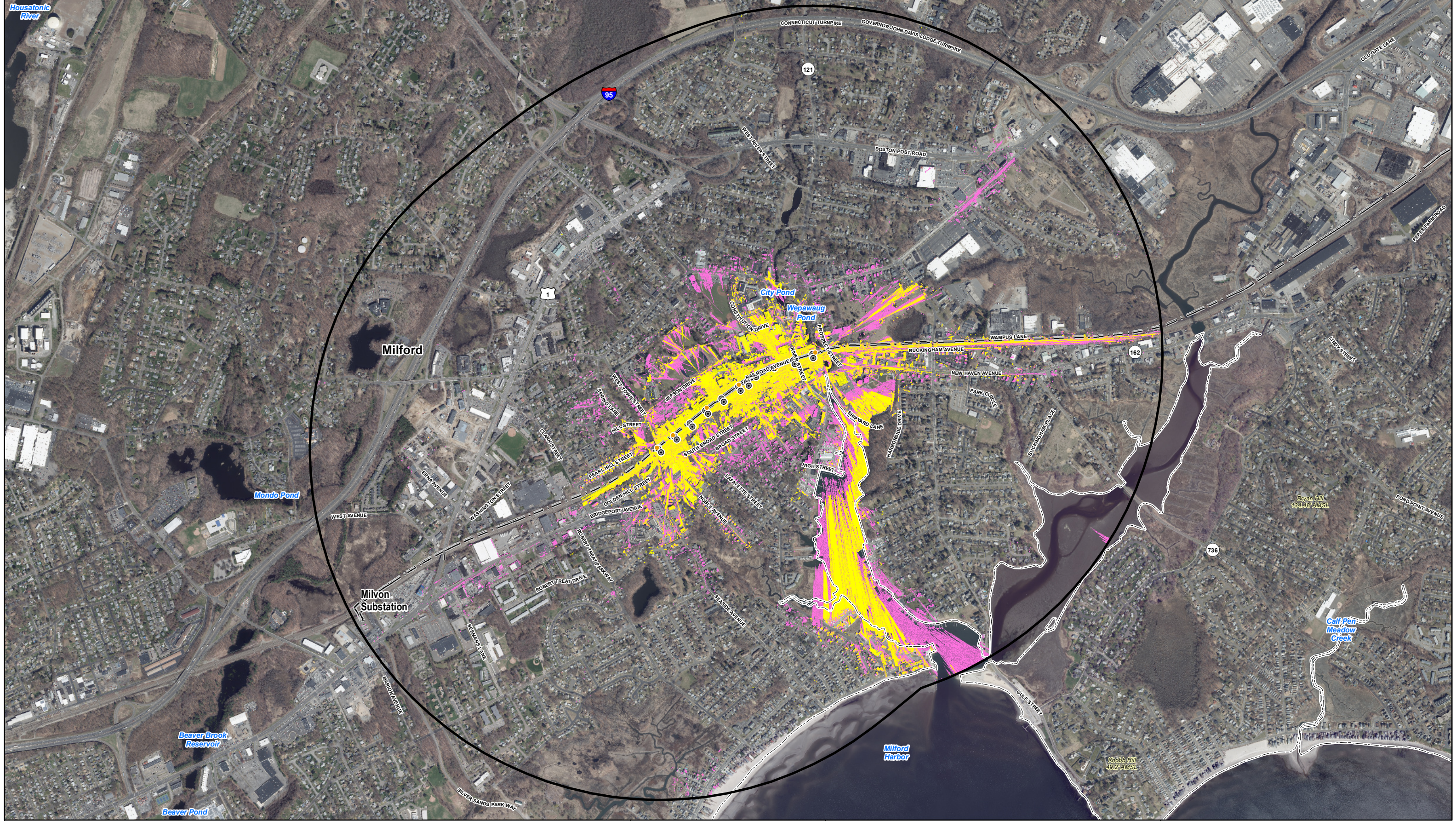
Study area encompasses a 1-mile radius surrounding the existing catenaries and includes 2,675 acres. A digital surface model (DSM) was created from the State of Connecticut 2016 LIDAR LAS data points. The DSM captures the natural and built features on the Earth's surface. Forest canopy height derived from LIDAR data.

Map Sources

*Not all data layers appear on map sheet.
 Ortho Base Map: State of Connecticut 2019 aerial imagery (CTECO Map Service)
 CTDEEP's data library (<http://www.ct.gov/deep>)
 Data layers are maintained and updated by CTDEEP and represent the most recent publications.
 Scenic Roads: CTDOT State Scenic Highways (2015)
 Connecticut Forest and Parks Association, Connecticut Walk Books East and West

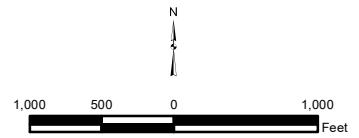
Map Date: May 2022

Docket 508
Response to Milford Interrogatory 4
Option 4 (Bonnet Rebuild) Viewshed Analysis Map
Structures Numbers 905 N/S - 914 N/S, Milford, CT
Milvon-West River Railroad Transmission
Line 115-kV Rebuild Project



Legend

- Catenary Bonnet Rebuild
- Proposed Monopole
- Project Transmission Line
- Year-Round Visibility - Catenary Rebuild (114 Acres)
- Year-Round Visibility - Proposed Monopoles (188 Acres)
- Study Area (1 Mile Radius)
- Municipal Boundary



Limitations

This map depicts areas where potential rebuilt catenary bonnets (25' taller than existing catenary bonnets) and proposed monopoles may potentially be visible to the human eye without the aid of magnification based on a viewer eye-height of 5 feet above the ground and intervening topography, tree canopy, and other existing structures. This analysis is based on a combination of computer modeling, incorporating the DSM, and 2019 digital aerial photographs. This analysis does not necessarily depict all locations where views may occur. It is intended to provide a representation of those areas where at least a portion of the proposed electrical facilities may be seen, but may actually over-predict visibility in some locations.

Physical Geography / Background Data

Study area encompasses a 1-mile radius surrounding the existing catenaries and includes 2,675 acres. A digital surface model (DSM) was created from the State of Connecticut 2016 LIDAR LAS data points. The DSM captures the natural and built features on the Earth's surface. Forest canopy height derived from LIDAR data.

Map Sources

*Not all data layers appear on map sheet.

Ortho Base Map: State of Connecticut 2019 aerial imagery (CTECO Map Service)
 CTDEEP's data library (<http://www.ct.gov/deep>)
 Data layers are maintained and updated by CTDEEP and represent the most recent publications.
 Scenic Roads: CTDOT State Scenic Highways (2015)
 Connecticut Forest and Parks Association, Connecticut Walk Books East and West

Map Date: May 2022

Docket 508
Response to Milford Interrogatory 4
Comparative Viewshed Analysis Map (Year-Round Visibility)
Proposed Monopoles vs. Option 4 (Bonnet Rebuild)
Milfon-West River Railroad Transmission
Line 115-kV Rebuild Project



Legend

- Proposed Monopole
- Project Transmission Line
- Year-Round Visibility (165 Acres)
- Areas of Potential Seasonal Visibility (113 Acres)
- Study Area (1 Mile Radius)
- Municipal Boundary
- Scenic Highway*
- Trail*
- DEEP Boat Launches*
- Municipal and Private Open Space Property
- State Forest/Park

Protected Open Space Property

- Federal*
- Land Trust*
- Municipal*
- Private*
- State*

Scale: 1,000 500 0 1,000 Feet

Limitations

This map depicts areas where potential riser monopoles, associated with the Underground Option, may potentially be visible to the human eye without the aid of magnification based on a viewer eye-height of 5 feet above the ground and intervening topography, tree canopy, and other existing structures. This analysis is based on a combination of computer modeling, incorporating the DSM, and 2019 digital aerial photographs.

This analysis does not necessarily depict all locations where views may occur. It is intended to provide a representation of those areas where at least a portion of the proposed electrical facilities may be seen, but may actually over-predict visibility in some locations.

Physical Geography / Background Data

Study area encompasses a 1-mile radius surrounding the existing catenaries and includes 2,675 acres. A digital surface model (DSM) was created from the State of Connecticut 2016 LIDAR LAS data points. The DSM captures the natural and built features on the Earth's surface. Forest canopy height derived from LIDAR data.



Map Sources

*Not all data layers appear on map sheet.

Ortho Base Map: State of Connecticut 2019 aerial imagery (CTECO Map Service)
 CTDEEP's data library (<http://www.ct.gov/deep>)
 Data layers are maintained and updated by CTDEEP and represent the most recent publications.
 Scenic Roads: CTDOT State Scenic Highways (2015)
 Connecticut Forest and Parks Association, Connecticut Walk Books East and West

Map Date: May 2022

Docket 508
Response to Milford Interrogatory 4
Underground Option Viewshed Analysis Map
Structures Numbers 905 NS/905 NN - 914 NS/914 NN, Milford, CT
Milvon-West River Railroad Transmission
Line 115-kV Rebuild Project



Legend

- Proposed Monopole
- Proposed Monopole (Underground Option)
- Project Transmission Line
- Year-Round Visibility - Underground Option Monopoles (165 Acres)
- Year-Round Visibility - Proposed Monopoles (188 Acres)
- Study Area (1 Mile Radius)

□ Municipal Boundary

1,000 500 0 1,000 Feet

Limitations

This map depicts areas where potential riser monopoles, associated with the Underground Option, and proposed monopoles may potentially be visible to the human eye without the aid of magnification based on a viewer eye-height of 5 feet above the ground and intervening topography, tree canopy, and other existing structures. This analysis is based on a combination of computer modeling, incorporating the DSM, and 2019 digital aerial photographs. This analysis does not necessarily depict all locations where views may occur. It is intended to provide a representation of those areas where at least a portion of the proposed electrical facilities may be seen, but may actually over-predict visibility in some locations.

Physical Geography / Background Data

Study area encompasses a 1-mile radius surrounding the existing catenaries and includes 2,675 acres. A digital surface model (DSM) was created from the State of Connecticut 2016 LIDAR LAS data points. The DSM captures the natural and built features on the Earth's surface. Forest canopy height derived from LIDAR data.

Map Sources

*Not all data layers appear on map sheet.

Ortho Base Map: State of Connecticut 2019 aerial imagery (CTECO Map Service)
 CTDEEP's data library (<http://www.ct.gov/deep>)
 Data layers are maintained and updated by CTDEEP and represent the most recent publications.
 Scenic Roads: CTDOT State Scenic Highways (2015)
 Connecticut Forest and Parks Association, Connecticut Walk Books East and West

Map Date: May 2022

Docket 508
Response to Milford Interrogatory 4
Comparative Viewshed Analysis Map (Year-Round Visibility)
Proposed Monopoles vs. Underground Option
Milvon-West River Railroad Transmission
Line 115-kV Rebuild Project



PHOTOGRAPHED ON 5/9/2022

EXISTING

PHOTO

1

LOCATION

VIEW FROM LAURELTON HALL - MILFORD

ORIENTATION

SOUTHEAST





CONCEPT

PHOTO

1

LOCATION

VIEW FROM LAURELTON HALL - MILFORD

OPTION 4

ORIENTATION

SOUTHEAST





CONCEPT

PHOTO

1

LOCATION

VIEW FROM LAURELTON HALL - MILFORD

UNDERGROUND CONFIGURATION

ORIENTATION

SOUTHEAST





PHOTOGRAPHED ON 5/9/2022

EXISTING

PHOTO

2

LOCATION

VIEW FROM MILFORD POST OFFICE - MILFORD

ORIENTATION

SOUTHEAST





CONCEPT

OPTION 4

PHOTO

LOCATION

ORIENTATION

2

VIEW FROM MILFORD POST OFFICE - MILFORD

SOUTHEAST





UNDERGROUND CONFIGURATION

CONCEPT

PHOTO

2

LOCATION

VIEW FROM MILFORD POST OFFICE - MILFORD

ORIENTATION

SOUTHEAST





PHOTOGRAPHED ON 5.19.2022

EXISTING

PHOTO

3

LOCATION

VIEW FROM RIVER STREET AT ST. PETER'S EPISCOPAL CHURCH - MILFORD

ORIENTATION

SOUTHWEST



CONCEPT

OPTION 4

PHOTO

LOCATION

ORIENTATION

3

VIEW FROM RIVER STREET AT ST. PETER'S EPISCOPAL CHURCH - MILFORD

SOUTHWEST





CONCEPT

PHOTO

3

LOCATION

VIEW FROM RIVER STREET AT ST. PETER'S EPISCOPAL CHURCH - MILFORD

UNDERGROUND CONFIGURATION

ORIENTATION

SOUTHWEST



PHOTOGRAPHED ON 5.19.2022

EXISTING

PHOTO

4

LOCATION

VIEW FROM PROSPECT STREET WITHIN HISTORIC DISTRICT- MILFORD

ORIENTATION

SOUTHEAST





CONCEPT

OPTION 4

PHOTO

LOCATION

ORIENTATION

4

VIEW FROM PROSPECT STREET WITHIN HISTORIC DISTRICT- MILFORD

SOUTHEAST



UNDERGROUND CONFIGURATION

CONCEPT

PHOTO

4

LOCATION

VIEW FROM PROSPECT STREET WITHIN HISTORIC DISTRICT- MILFORD

ORIENTATION

SOUTHEAST





PHOTOGRAPHED ON 5/9/2022

EXISTING

PHOTO

5

LOCATION

VIEW FROM RIVER STREET AT TAYLOR LIBRARY- MILFORD

ORIENTATION

NORTHWEST



OPTION 4

CONCEPT

PHOTO

5

LOCATION

VIEW FROM RIVER STREET AT TAYLOR LIBRARY- MILFORD

ORIENTATION

NORTHWEST



CONCEPT

PHOTO

5

LOCATION

VIEW FROM RIVER STREET AT TAYLOR LIBRARY- MILFORD

ORIENTATION

NORTHWEST



PHOTOGRAPHED ON 3/25/2022

EXISTING

PHOTO

6

LOCATION

VIEW FROM SOUTH BROAD STREET – MILFORD

ORIENTATION

NORTH



CONCEPT

PHOTO

6

LOCATION

VIEW FROM SOUTH BROAD STREET – MILFORD

UNDERGROUND CONFIGURATION

ORIENTATION

NORTH



PHOTOGRAPHED ON 5/9/2022

EXISTING

PHOTO

6

LOCATION

VIEW FROM DANIEL STREET – MILFORD

ORIENTATION

NORTHEAST



CONCEPT

PHOTO

6

LOCATION

VIEW FROM DANIEL STREET – MILFORD

ORIENTATION

NORTHEAST

UNDERGROUND CONFIGURATION