



An AVANGRID Company

*Transmission Lines*

---

# United Illuminating Company

*Milvon – West River 115 kV  
Transmission Line Rebuild Project  
City of Milford Public Hearing*

February 28, 2022

# Contents

---

01 UI & RAILROAD PROGRAM

---

02 PROJECT NEED

---

03 PROJECT SCOPE & OUTLINE

---

04 WHAT THE PROJECT MAY LOOK LIKE IN MILFORD

---

05 QUESTIONS

---

# UI TEAM

---

## UI Team:

- Jim Yeske, Director, Transmission Lines
- Laura Campbell, Program Manager UI Transmission
- Shawn Crosbie, Project Manager
- Matt Scully, Construction Manager
- Aziz Chouhdery, Lead Transmission Engineer
- Annette Potasz, Energy Land Management
- Leslie Downey, Public Outreach
- Correne Auer, Environmental Permitting & Compliance
- Ani Chaghatzbanian, UI Milford Account Manager



- 342,194 UI customers across 17 towns
- 27,942 Milford customers
- Supporting our local communities:
  - Membership Milford Chamber of Commerce
  - CT Audubon Society
  - Milford Arts Council
  - CT Yankee Council BSA
- 1,810 UI Employees
- Outage alerts:
  - [Outages \(uinet.com\)](http://uinet.com)
  - [www.uinet.com](http://www.uinet.com)



# UI & Railroad Program

Rebuild 115kV Transmission Lines from New Haven to Fairfield, CT

- 25 Linear miles, 45 circuit miles
- Along 2<sup>nd</sup> busiest commuter rail corridor in US
- Thermal capacity upgrades
- NERC Clearance violations
- Aging Infrastructure – catenaries installed 1900s

## Completed Projects:

- ✓ Milvon to Devon-Tie, Milford (2016)
- ✓ FAC-008 NERC Alert, Stratford, Milford, West Haven (2016)
- ✓ Housatonic River Crossing, Stratford (2018)
- ✓ Baird to Congress, Stratford & Bridgeport (2018)
- ✓ HRX to Baird, Stratford (2021)



<http://www.uirailroadtlineupgrades.com>

# PROJECT NEED



## NEED

- UI performed a comprehensive asset condition assessment of its 115 kV transmission equipment along the railroad corridor. Due to physical limitations of the existing structures supporting UI's electrical infrastructure that are a result of age deterioration and increased loads on the structures, it was recommended that the 115 kV transmission lines be rebuilt
- Failure of the existing transmission line support structures may result in catastrophic failure(s) to both 115 kv circuits, loss of power to one or more of the substations in this segment and threaten safe operation of the Northeast Railroad Corridor.

## EVALUATION

- Aging infrastructure
- Provide safe reliable electricity
- Design to latest standards

# PROJECT SCOPE & OUTLINE

## Project Summary

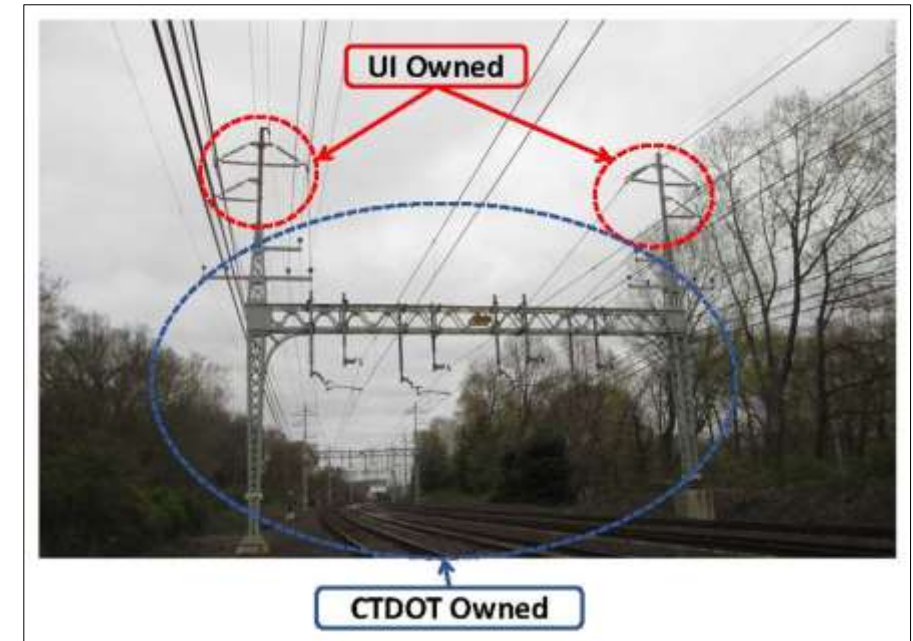
- UI is proposing to rebuild ~160 structures along its existing 115kV transmission line primarily on CT Department of Transportation right-of-way between Milvon Substation (Milford) and West River Substation (New Haven) , approximately 9.5 miles (19 circuit miles). UI will also be removing all bonnets on MNR catenaries in the Project area.
- Work in each of four Substations (West River-New Haven, Elmwest and Allings Crossing-West Haven, Woodmont and Milvon-Milford)

## Engineering work performed to-date

- Ongoing Design
- Filing of Municipal Consultation Filing
- Completed Connecticut Siting Council Application
- Ongoing State & Federal Permitting Plan

## Field Work performed to-date

- Property survey,
- Resource Area Delineation & Species Assessment,
- Geo-Technical Evaluation



# PROJECT SCOPE & OUTLINE

---

- Project anticipates construction activities to commence in Spring to Summer 2023 and be in-service subject to changes outside of UI control by winter 2028 followed up by inspection and restoration requirements
- Anticipated work hours during construction will be primarily from 7 am to 7pm. However, UI does anticipate that certain activities requiring work scope to be performed 24 hours a day and nighttime construction shifts for work that will require railroad track outages.
- Work anticipated to be performed during construction
  - Vegetation Clearing and Erosion and Sediment Controls
  - Development of Access Road and Work Pads
  - Drilling of Foundations
  - Installation of Monopoles
  - Hanging Hardware and Conductor
  - Removal of Old Infrastructure (Bonnets)
  - Restoration
- **Project Communications and Updates**
  - Website [UIRailroadTLineUpgrades.com](http://UIRailroadTLineUpgrades.com)
  - Outreach Hotline 888.848.3697



# PROJECT SCOPE & OUTLINE



## Vegetation Clearing

UI will have to remove trees in the Project area, including along the CT DOT corridor and in certain locations adjacent to the CT DOT property based on established vegetation management protocols



## Erosion & Sediment Controls

Installed around disturbed or sensitive areas per the CTDEEP General Permit for the Discharge of Stormwater and Dewatering Wastewaters from Construction Activities

# PROJECT SCOPE & OUTLINE

---



## Access Roads & Work Pads

Majority will be installed using construction mats but some locations will use gravel/aggregate base



# PROJECT SCOPE & OUTLINE

---



## Drilling Foundations

Each location had it's soil conditions evaluated to determine width and depth of each foundation



Once foundation is drilled, concrete is poured and hardware installed

# PROJECT SCOPE & OUTLINE

---



## Installation of Structure(s)

Steel poles are brought in section by section and installed by specialized equipment



## Stringing Conductor

Use specialized equipment to run conductor (i.e., electric wire) from structure to structure

# PROJECT SCOPE & OUTLINE

---



## Restoration

UI will execute the restoration of (1) work areas that have been disturbed during construction which will be restored to as close to pre-construction conditions as possible and (2) comply with requirements under permit approvals at every area of disturbance per the CTDEEP General Permit for the Discharge of Stormwater and Dewatering Wastewaters from Construction Activities.



# WHAT THE PROJECT MAY LOOK LIKE IN MILFORD

## General Overview

Town	Length of Route (linear miles)	Vegetation Clearing (acres)	Current Number of Existing Catenaries/Bonnets	Proposed Number of New Structures	Estimated Resource Area Impacts (acres)	Number of Customers Serviced in Milford
Milford	5.03	15.6	100/200	79	5.4	27,942

## Milford - Key Project Dates

ACTIVITY	DATE	STATUS
MCF Filing	October 2021	Complete
Geo-Tech	January 2022	Complete
CSC Application	February 2022	Complete
Property Easement Negotiations	February 2024	Planning
Estimated Construction Start	February 2025	Planning
In-Service-Energized	November 2027	Planning
Removals & Restoration	December 2028	Planning

# WHAT THE PROJECT MAY LOOK LIKE IN MILFORD



**EXISTING**

PHOTO

4

LOCATION

VIEW FROM WEST END OF PEARL HILL STREET AT CLARK STREET INTERSECTION - MILFORD

ORIENTATION

SOUTH



**PROPOSED**

PHOTO

4

LOCATION

VIEW FROM WEST END OF PEARL HILL STREET AT CLARK STREET INTERSECTION - MILFORD

ORIENTATION

SOUTH

**Existing – Pearl Hill St and Clark Street Intersection**

**Proposed - Pearl Hill St and Clark Street Intersection.**

# WHAT THE PROJECT MAY LOOK LIKE IN MILFORD



**EXISTING**

PHOTO  
5

LOCATION

VIEW FROM PEARL HILL STREET - MILFORD

ORIENTATION  
SOUTHEAST

**Existing – Pearl Hill Street**



**PROPOSED**

PHOTO  
5

LOCATION

VIEW FROM PEARL HILL STREET - MILFORD

ORIENTATION  
SOUTHEAST

**Proposed - Pearl Hill Street.**



# WHAT THE PROJECT MAY LOOK LIKE IN MILFORD



**EXISTING**

PHOTO

7

LOCATION

VIEW FROM BROAD STREET - MILFORD

ORIENTATION

NORTHWEST

**Existing – Broad Street**



**PROPOSED**

PHOTO

7

LOCATION

VIEW FROM BROAD STREET - MILFORD

ORIENTATION

NORTHWEST

**Proposed - Broad Street.**

# WHAT THE PROJECT MAY LOOK LIKE IN MILFORD



**EXISTING**

PHOTO

10

LOCATION

VIEW FROM JEPSON DRIVE; SOUTH OF ACADEMY OF OUR LADY OF MERCY, LAURALTON HALL – MILFORD

ORIENTATION

SOUTH

**Existing – Jepson Drive**



**PROPOSED**

PHOTO

10

LOCATION

VIEW FROM JEPSON DRIVE; SOUTH OF ACADEMY OF OUR LADY OF MERCY, LAURALTON HALL – MILFORD

ORIENTATION

SOUTH

**Proposed - Jepson Drive.**



## UI Railroad Transmission Lines Upgrade Project



About the Milvon to West River Transmission Line Rebuild Project

Learn more about the project.

[READ MORE](#)

For additional information or to ask a specific question, visit [www.UIRailroadTLineUpgrades.com](http://www.UIRailroadTLineUpgrades.com)

Or you can reach out directly by calling the Outreach Hotline at **1.888.848.3697**

# QUESTIONS

---





February 15, 2022

Re: Public Hearing Notice regarding The United Illuminating Company's  
115-kV Transmission Line Rebuild Project

Dear Neighbor:

The United Illuminating Company ("UI") is proposing to rebuild approximately five miles of its existing overhead 115-kilovolt overhead transmission lines within the Connecticut Department of Transportation's Metro-North Railroad corridor in Milford. In order to receive public feedback on the proposed project, the City of Milford will hold a **public hearing on the Project on February 28, 2022 at 7:00 p.m. via this Zoom link:**

<https://us02web.zoom.us/j/88567717480?pwd=NmtmemFDMnpHblhFVFhGN253d0NzUT09>

Virtual/Telephonic Meeting Dial In Number: 1-929-205-6099  
Meeting ID: 885 6771 7480; If prompted for a Passcode: 348636

UI is proposing the Project as part of the Company's efforts to enhance the reliability and resiliency of the electric transmission grid. This effort will help to strengthen the transmission system and to ensure that UI is able to maintain safe and reliable transmission of power to its customers throughout Fairfield and New Haven Counties.

Please do not hesitate to contact UI at 888.848.3697 if you have any questions regarding the hearing or the proposed Project. Additional information concerning the project can also be found at [UIRailroadTLineUpgrades.com](http://UIRailroadTLineUpgrades.com).

Sincerely,

*Shawn C Crosbie*

Shawn Crosbie  
Senior Project Manager - Transmission Lines  
[Shawn.Crosbie@avangrid.com](mailto:Shawn.Crosbie@avangrid.com)  
[www.UIRailroadTLineUpgrades.com](http://www.UIRailroadTLineUpgrades.com)

