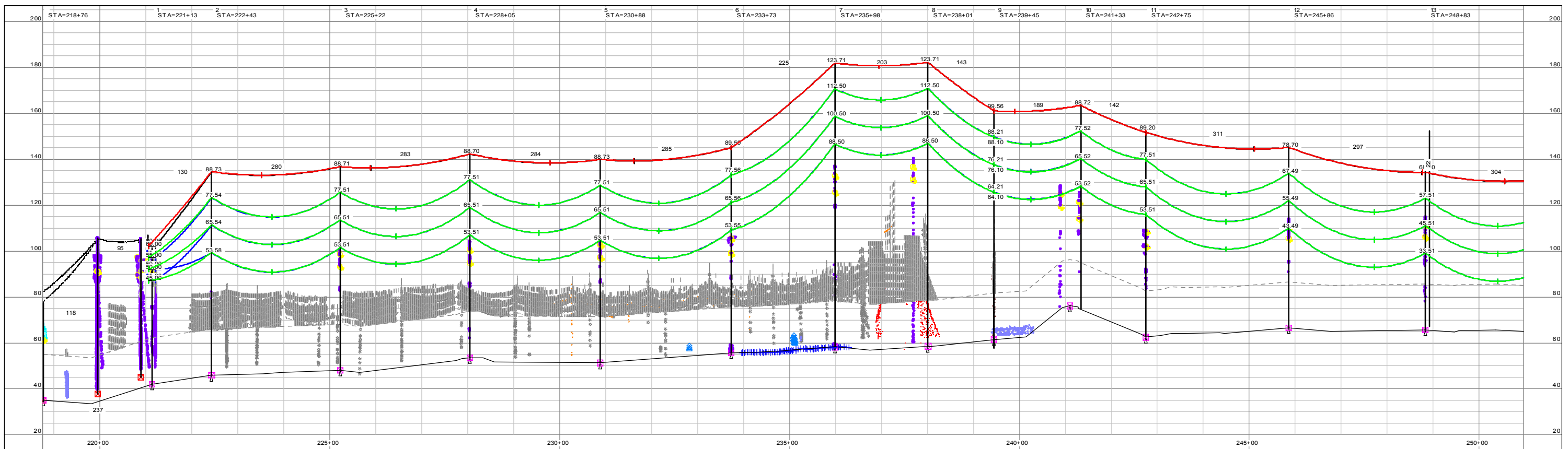
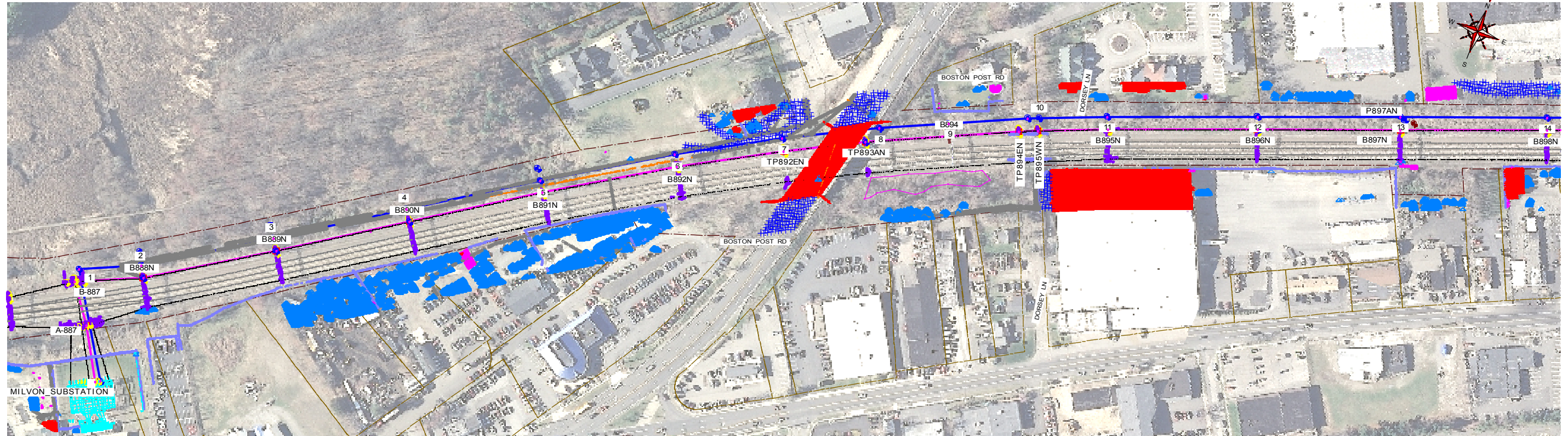




APPENDIX D.1.1
MWR ALTERNATIVE 1 CONCEPTUAL
DESIGN DRAWINGS



100.0 FT. HORIZ. SCALE
20.0 FT. VERT. SCALE



REFERENCE DRAWING
LATTICE MODIFICATIONS: 14213-591C

GENERAL NOTES:
1. AERIAL PHOTOGRAPHY IS FOR REFERENCE ONLY. LOCATIONS MAY NOT COINCIDE WITH OTHER INFORMATION SHOWN ON THE PAGE AS SEEN IN THE FIELD.
2. WIRE ATTACHMENT ELEVATIONS ARE BASED ON SURVEY ELEVATIONS.
3. POSITIVE LONGITUDINAL OFFSET SIGNIFIES THE PROPOSED MONOPOLE IS AHEAD SPAN FROM THE EXISTING CATENARY POST.

BLACK & VEATCH <i>Building on a world of difference</i>	
DESIGNER	DRAWN
CHECKED	DATE 9/29/2017
PROJECT #	195880

NO.	DATE	REVISION	EJ	ADD	DWM
NO.	DATE	REVISION	DRN	DESN	CHKD
A	09/29/17	ISSUE FOR REVIEW			

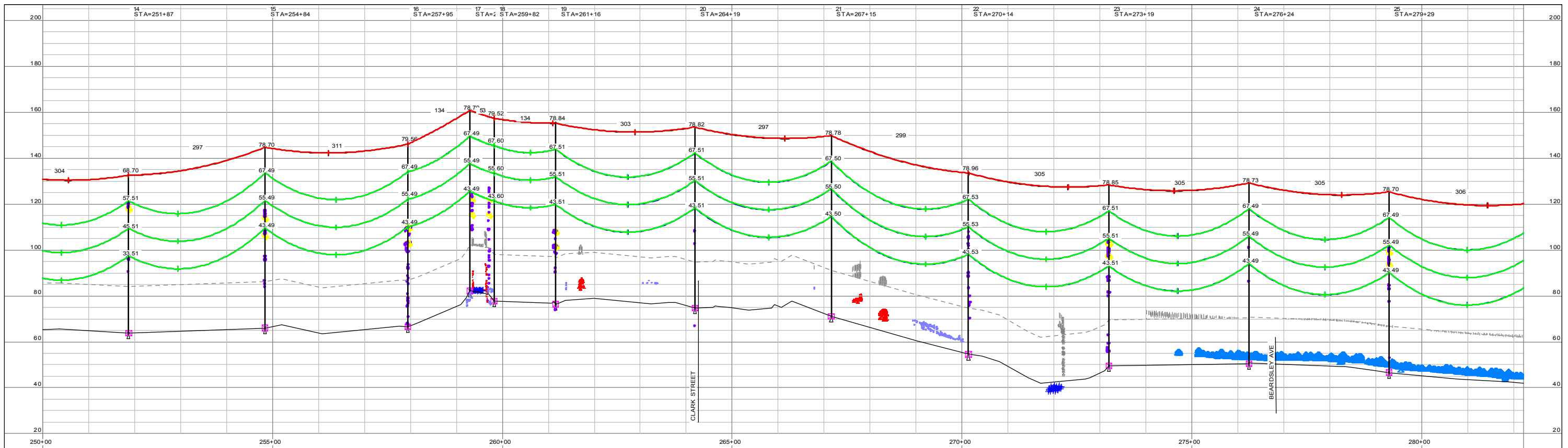
NOTES:
SHIELD WIRE:
PRYSMIAN OPGW 6K-7/5
SHOWN AT 60° F, NO WIND, FINAL
5000 LB DESIGN TENSION (NESC HEAVY)
CONDUCTOR:
2156 KCMIL ACSS "BLUEBIRD"
SHOWN AT 392° F, NO WIND, FINAL
9000 LB DESIGN TENSION (NESC HEAVY)

Page 475	Revision	By	Chkd.	Engr.	Supv.
B&V Project: 197505					

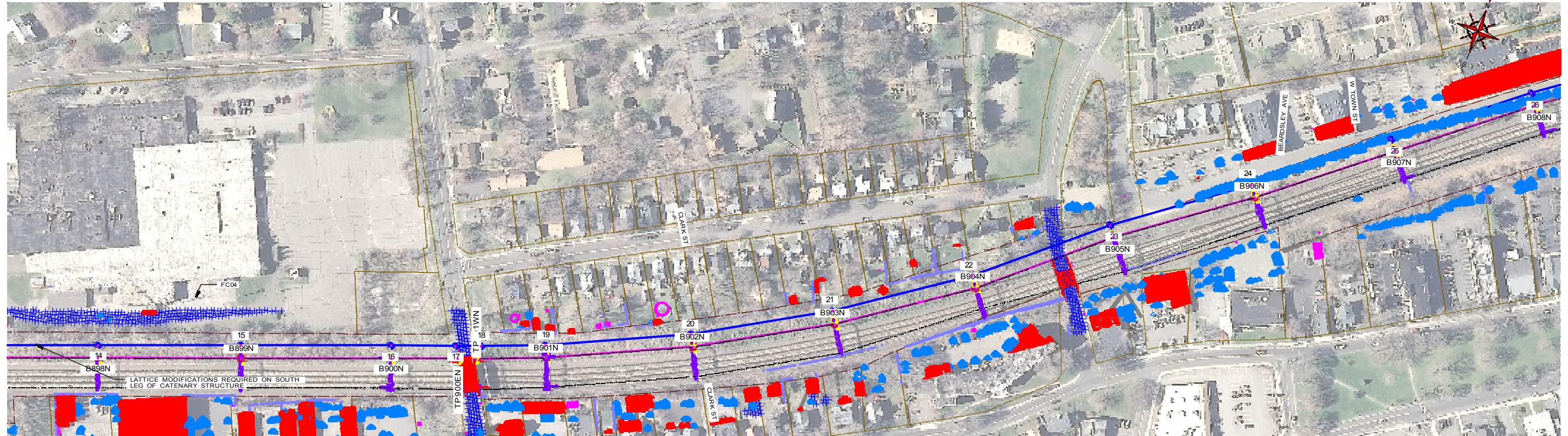


88005A MILVON TO WOODMONT (NORTH) 115KV TRANSMISSION LINE OPTION 1-DOUBLE CIRCUIT MONOPOLES PLAN & PROFILE		
CAD FILE NAME	SEQUENCE No.	DRAWING NUMBER
		MW-OP1-1

Drawn	Date	Scale: SEE PLAN
Chkd.	Design Engr.	Design Supv.



100.0 FT. HORIZ. SCALE
20.0 FT. VERT. SCALE



REFERENCE DRAWING
LATTICE MODIFICATIONS: 14213-591C

GENERAL NOTES:
1. AERIAL PHOTOGRAPHY IS FOR REFERENCE ONLY. LOCATIONS MAY NOT COINCIDE WITH OTHER INFORMATION SHOWN ON THE PAGE AS SEEN IN THE FIELD.
2. WIRE ATTACHMENT ELEVATIONS ARE BASED ON SURVEY ELEVATIONS.
3. POSITIVE LONGITUDINAL OFFSET SIGNIFIES THE PROPOSED MONOPOLE IS AHEAD SPAN FROM THE EXISTING CATENARY POST.

BLACK & VEATCH Building on a world of difference	
DESIGNER	DRAWN
CHECKED	DATE 9/29/2017
PROJECT #	195880

NO.	DATE	REVISION	EJ	ADD	DWM
NO.	DATE	REVISION	DRN	DESN	CHKD
A	09/29/17	ISSUE FOR REVIEW			

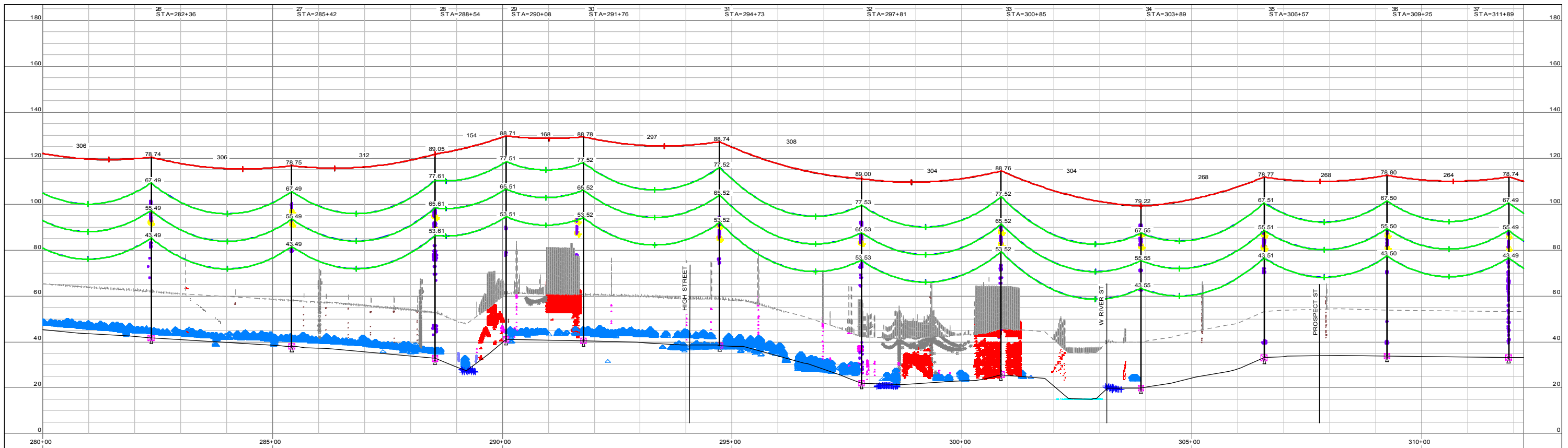
NOTES:
SHIELD WIRE:
PRYSMIAN OPGW 68K-75
SHOWN AT 60°F, NO WIND, FINAL
5000 LB DESIGN TENSION (NESC HEAVY)
CONDUCTOR:
2186 KCMIL ACSS 'BLUEBIRD'
SHOWN AT 392°F, NO WIND, FINAL
9000 LB DESIGN TENSION (NESC HEAVY)

Page 476	Revision	By	Chkd.	Engr.	Supv.
B&V Project: 197505					

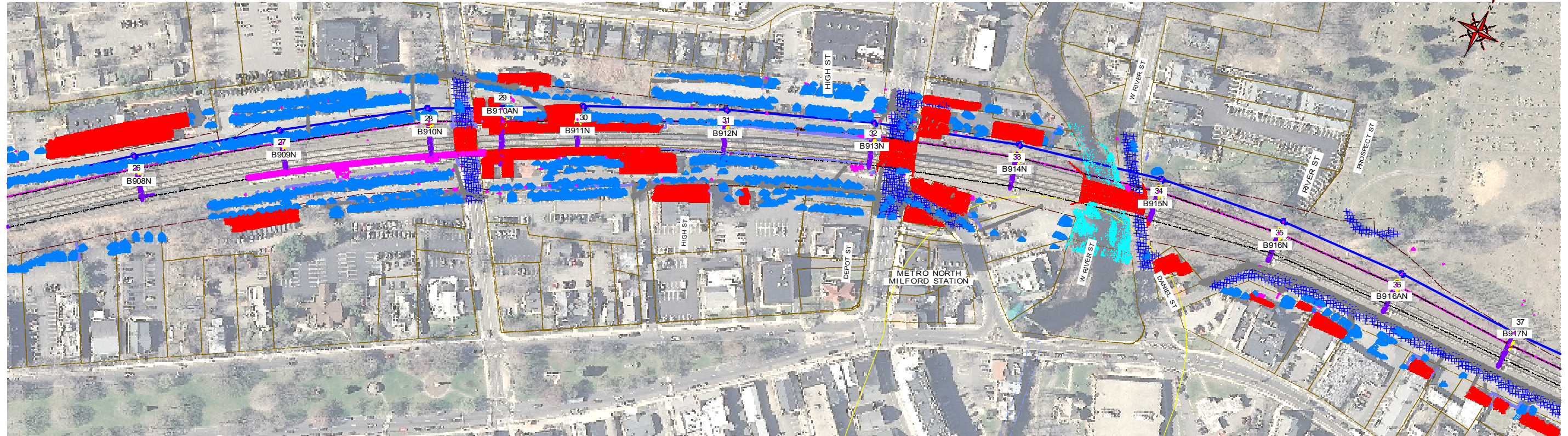


88005A MILVON TO WOODMONT (NORTH)
115KV TRANSMISSION LINE
OPTION 1-DOUBLE CIRCUIT MONOPOLES
PLAN & PROFILE

Drawn	Date	Scale: SEE PLAN	CAD FILE NAME	SEQUENCE No.	DRAWING NUMBER
Chkd.	Design Engr.	Design Supv.			MW-OP1-2



100.0 FT. HORIZ. SCALE
20.0 FT. VERT. SCALE



REFERENCE DRAWING
LATTICE MODIFICATIONS: 14213-591C

GENERAL NOTES:
1. AERIAL PHOTOGRAPHY IS FOR REFERENCE ONLY. LOCATIONS MAY NOT COINCIDE WITH OTHER INFORMATION SHOWN ON THE PAGE AS SEEN IN THE FIELD.
2. WIRE ATTACHMENT ELEVATIONS ARE BASED ON SURVEY ELEVATIONS.
3. POSITIVE LONGITUDINAL OFFSET SIGNIFIES THE PROPOSED MONOPOLE IS AHEAD SPAN FROM THE EXISTING CATENARY POST.

BLACK & VEATCH Building on a world of difference	
DESIGNER	DRAWN
CHECKED	DATE 9/29/2017
PROJECT #	195880

A	NO.	DATE	REVISION	EJ	ADD	DWM
NO.	NO.	DATE	REVISION	DRN	DESN	CHKD
A	09/29/17	ISSUE FOR REVIEW				

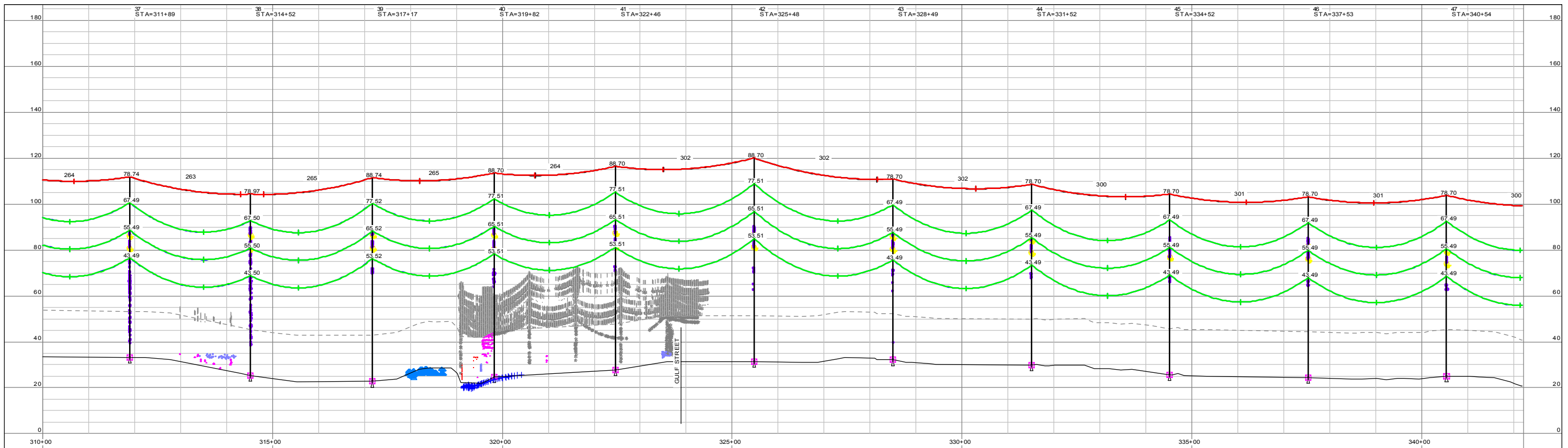
NOTES:
SHIELD WIRE:
PRYSMIAN OPGW 6K-7/5
SHOWN AT 60°F, NO WIND, FINAL
5000 LB DESIGN TENSION (NESC HEAVY)
CONDUCTOR:
2156 KCMIL ACSS 'BLUEBIRD'
SHOWN AT 392°F, NO WIND, FINAL
9000 LB DESIGN TENSION (NESC HEAVY)

Page 177	Revision	By	Chkd.	Engr.	Supv.
B&V Project: 197505					

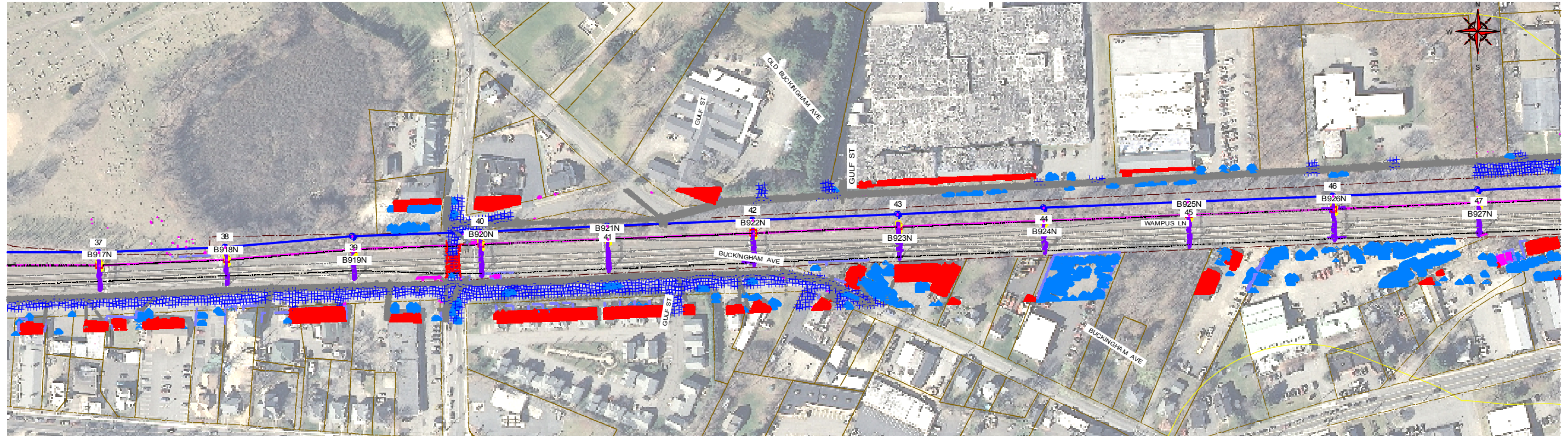


Drawn	Date	Scale: SEE PLAN
Chkd.	Design Engr.	Design Supv.

88005A MILVON TO WOODMONT (NORTH) 115KV TRANSMISSION LINE OPTION 1-DOUBLE CIRCUIT MONOPOLES PLAN & PROFILE		
CAD FILE NAME	SEQUENCE No.	DRAWING NUMBER
		MW-OP1-3



100.0 FT. HORIZ. SCALE
20.0 FT. VERT. SCALE



REFERENCE DRAWING
LATTICE MODIFICATIONS: 14213-591C

GENERAL NOTES:
1. AERIAL PHOTOGRAPHY IS FOR REFERENCE ONLY. LOCATIONS MAY NOT COINCIDE WITH OTHER INFORMATION SHOWN ON THE PAGE AS SEEN IN THE FIELD.
2. WIRE ATTACHMENT ELEVATIONS ARE BASED ON SURVEY ELEVATIONS.
3. POSITIVE LONGITUDINAL OFFSET SIGNIFIES THE PROPOSED MONOPILE IS AHEAD SPAN FROM THE EXISTING CATENARY POST.

NOTES:
SHIELD WIRE:
PRYSMIAN OPGW 6K-7S
SHOWN AT 60°F, NO WIND, FINAL
5000 LB DESIGN TENSION (NESC HEAVY)
CONDUCTOR:
2156 KCMIL ACSS 'BLUEBIRD'
SHOWN AT 392°F, NO WIND, FINAL
9000 LB DESIGN TENSION (NESC HEAVY)



DESIGNER	DRAWN
CHECKED	DATE 9/29/2017
PROJECT #	195880

NO.	DATE	REVISION	EJ	ADD	DWM	
NO.	DATE	REVISION	DRN	DESN	CHKD	SUPR.
A	09/29/17	ISSUE FOR REVIEW				

Page 178
B&V Project: 197505

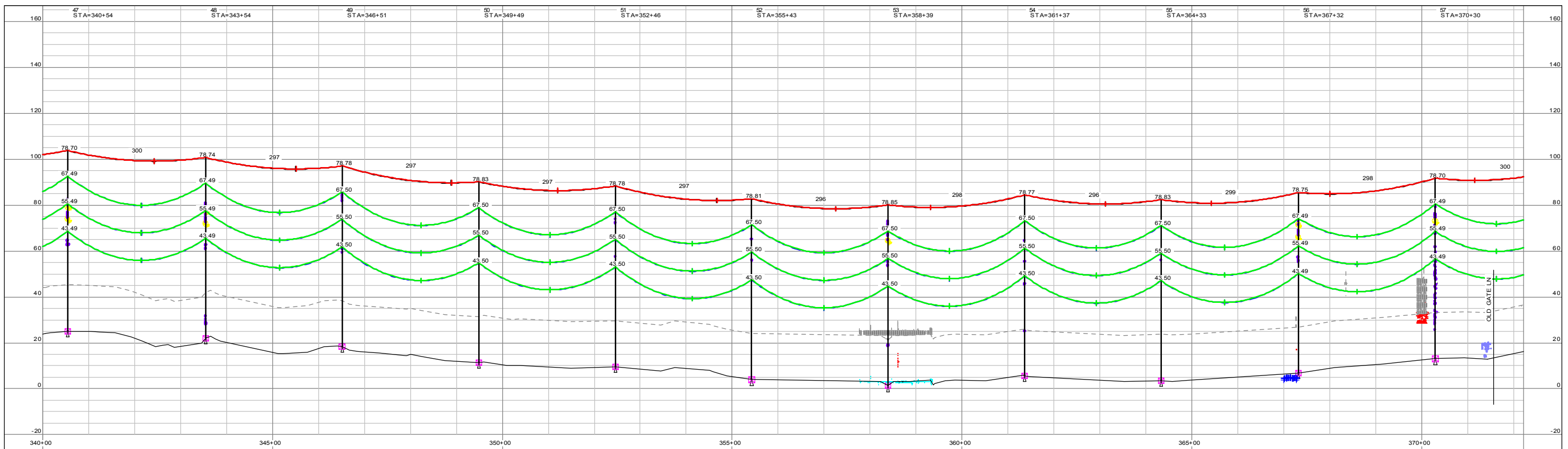
Revision _____ By _____ Chkd. _____ Engr. _____ Supv. _____



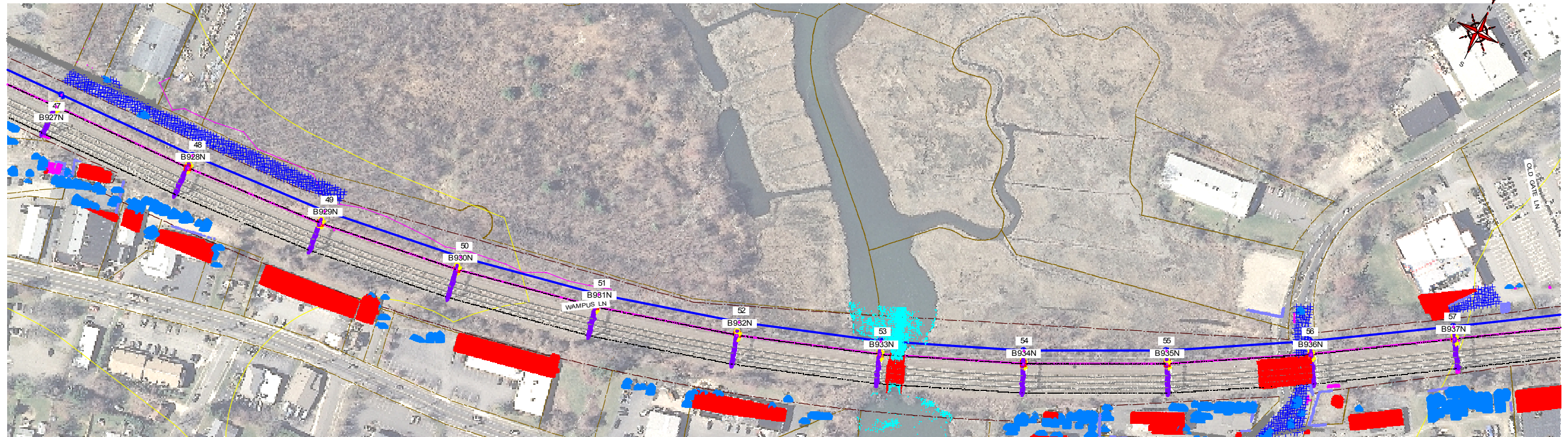
Drawn _____ Date _____ Scale: SEE PLAN
Chkd. _____ Design Engr. _____ Design Supv. _____

88005A MILVON TO WOODMONT (NORTH)
115KV TRANSMISSION LINE
OPTION 1-DOUBLE CIRCUIT MONOPOLES
PLAN & PROFILE

CAD FILE NAME	SEQUENCE No.	DRAWING NUMBER
		MW-OP1-4



100.0 FT. HORIZ. SCALE
20.0 FT. VERT. SCALE



REFERENCE DRAWING
LATTICE MODIFICATIONS: 14213-591C

GENERAL NOTES:
1. AERIAL PHOTOGRAPHY IS FOR REFERENCE ONLY. LOCATIONS MAY NOT COINCIDE WITH OTHER INFORMATION SHOWN ON THE PAGE AS SEEN IN THE FIELD.
2. WIRE ATTACHMENT ELEVATIONS ARE BASED ON SURVEY ELEVATIONS.
3. POSITIVE LONGITUDINAL OFFSET SIGNIFIES THE PROPOSED MONOPOLE IS AHEAD SPAN FROM THE EXISTING CATENARY POST.

BLACK & VEATCH <i>Building on a world of difference</i>	
DESIGNER	DRAWN
CHECKED	DATE 9/29/2017
PROJECT #	195880

A	NO.	DATE	REVISION	EJ	ADD	DWM
NO.	DATE	REVISION	DRN	DESN	CHKD	SUPR.
A	09/29/17	ISSUE FOR REVIEW				

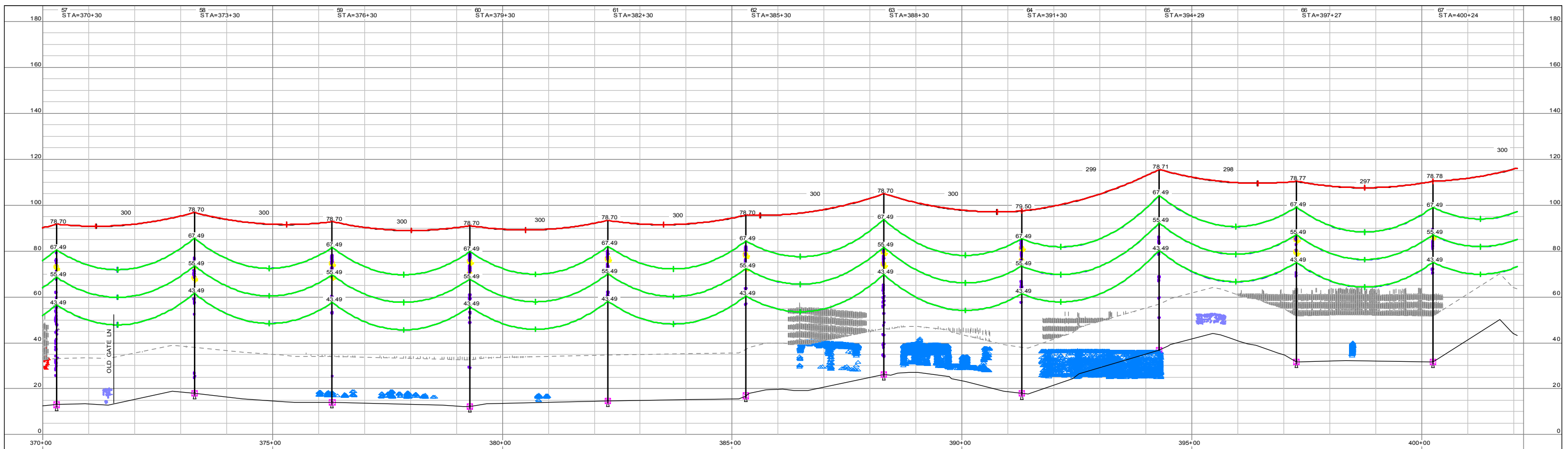
NOTES:
SHIELD WIRE:
PRYSMIAN OPGW 6K-7/5
SHOWN AT 60°F. NO WIND. FINAL
5000 LB DESIGN TENSION (NESC HEAVY)
CONDUCTOR:
2156 KCMIL ACSS "BLUEBIRD"
SHOWN AT 392°F. NO WIND. FINAL
9000 LB DESIGN TENSION (NESC HEAVY)

Page 170	Revision	By	Chkd.	Engr.	Supv.
B&V Project: 197505					

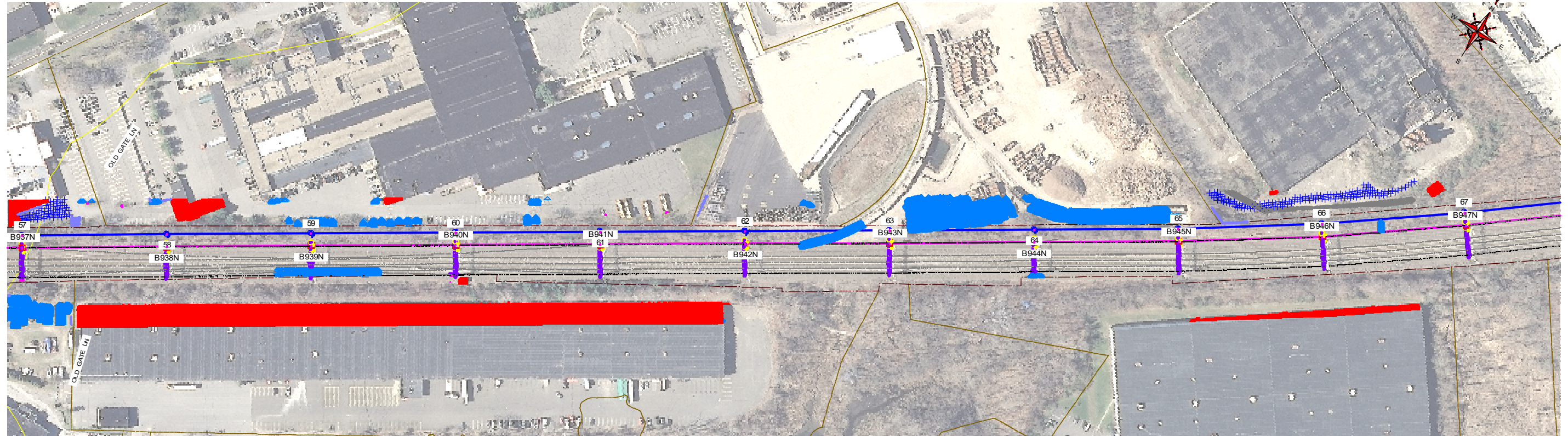
ui
The United Illuminating Company

Drawn	Date	Scale: SEE PLAN
Chkd.	Design Engr.	Design Supv.

88005A MILVON TO WOODMONT (NORTH) 115KV TRANSMISSION LINE OPTION 1-DOUBLE CIRCUIT MONOPOLES PLAN & PROFILE		
CAD FILE NAME	SEQUENCE No.	DRAWING NUMBER
		MW-OP1-5



100.0 FT. HORIZ. SCALE
20.0 FT. VERT. SCALE



REFERENCE DRAWING
LATTICE MODIFICATIONS: 14213-591C

GENERAL NOTES:
 1. AERIAL PHOTOGRAPHY IS FOR REFERENCE ONLY. LOCATIONS MAY NOT COINCIDE WITH OTHER INFORMATION SHOWN ON THE PAGE AS SEEN IN THE FIELD.
 2. WIRE ATTACHMENT ELEVATIONS ARE BASED ON SURVEY ELEVATIONS.
 3. POSITIVE LONGITUDINAL OFFSET SIGNIFIES THE PROPOSED MONOPOLE IS AHEAD SPAN FROM THE EXISTING CATENARY POST.

BLACK & VEATCH Building on a world of difference	
DESIGNER	DRAWN
CHECKED	DATE 9/29/2017
PROJECT #	195880

NO.	DATE	REVISION	EJ	ADD	DWM
NO.	DATE	REVISION	DRN	DESN	CHKD
A	09/29/17	ISSUE FOR REVIEW			

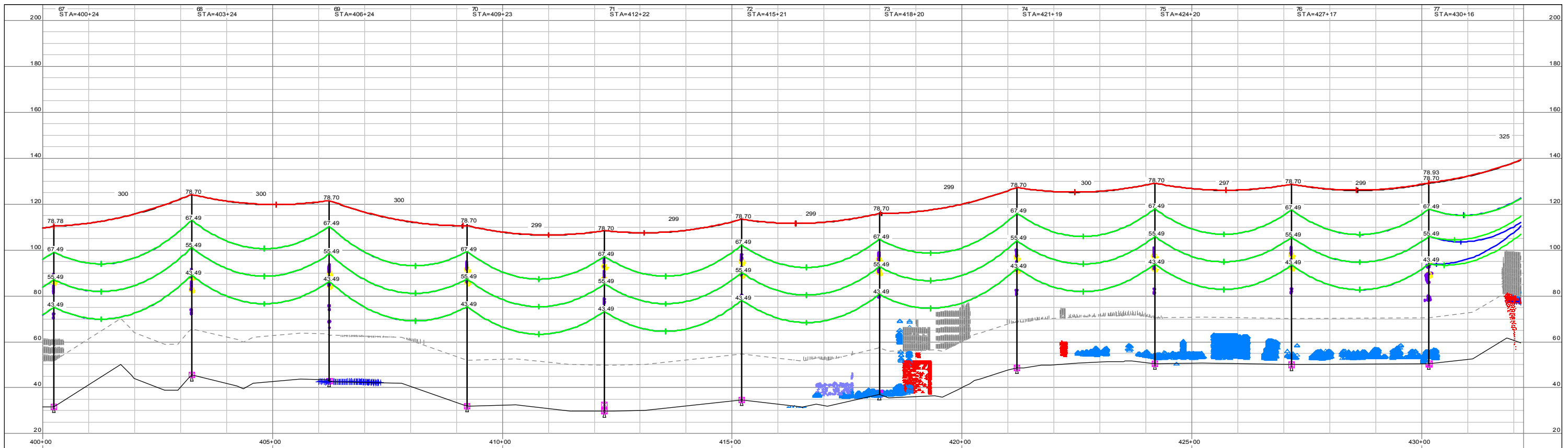
NOTES:
 SHIELD WIRE:
 PRYSMIAN OPGW 68K-7S
 SHOWN AT 60°F, NO WIND, FINAL
 5000 LB DESIGN TENSION (NESC HEAVY)
 CONDUCTOR:
 2156 KCMIL ACSS "BLUEBIRD"
 SHOWN AT 392°F, NO WIND, FINAL
 9000 LB DESIGN TENSION (NESC HEAVY)

Page 180	Revision	By	Chkd.	Engr.	Supv.
B&V Project: 197505					

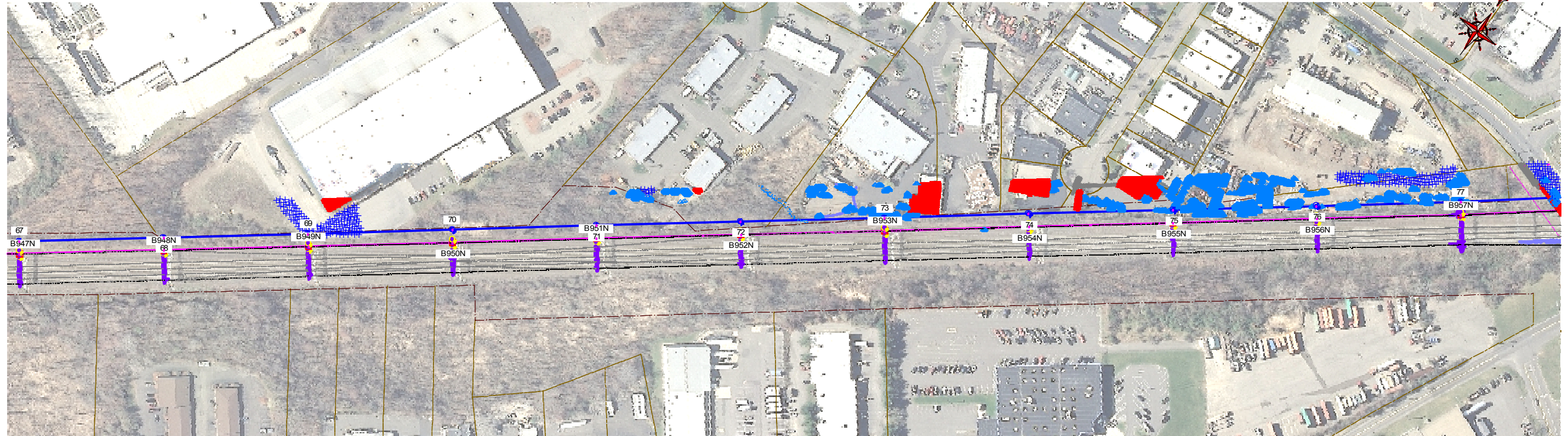
ui
The United Illuminating Company

Drawn: _____ Date: _____ Scale: SEE PLAN
 Chkd.: _____ Design Engr.: _____ Design Supv.: _____

88005A MILVON TO WOODMONT (NORTH) 115KV TRANSMISSION LINE OPTION 1-DOUBLE CIRCUIT MONOPOLES PLAN & PROFILE		
CAD FILE NAME	SEQUENCE No.	DRAWING NUMBER
		MW-OP1-6



100.0 FT. HORIZ. SCALE
20.0 FT. VERT. SCALE



REFERENCE DRAWING
LATTICE MODIFICATIONS: 14213-591C

GENERAL NOTES:
1. AERIAL PHOTOGRAPHY IS FOR REFERENCE ONLY. LOCATIONS MAY NOT COINCIDE WITH OTHER INFORMATION SHOWN ON THE PAGE AS SEEN IN THE FIELD.
2. WIRE ATTACHMENT ELEVATIONS ARE BASED ON SURVEY ELEVATIONS.
3. POSITIVE LONGITUDINAL OFFSET SIGNIFIES THE PROPOSED MONOPOLE IS AHEAD SPAN FROM THE EXISTING CATENARY POST.

BLACK & VEATCH <i>Building on a world of difference</i>	
DESIGNER	DRAWN
CHECKED	DATE 9/29/2017
PROJECT #	195880

A	NO.	DATE	ISSUE FOR REVIEW	REVISION	EJ	ADD	DWM
NO.	NO.	DATE	REVISION	DRN	DESN	CHKD	SUPR.
		09/29/17	ISSUE FOR REVIEW				

NOTES:
SHIELD WIRE:
PRYSMIAN OPGW 6K-7S
SHOWN AT 60°F, NO WIND, FINAL
5000 LB DESIGN TENSION (NESC HEAVY)

CONDUCTOR:
2156 KCMIL ACSS "BLUEBIRD"
SHOWN AT 392°F, NO WIND, FINAL
9000 LB DESIGN TENSION (NESC HEAVY)

Page 181	Revision	By	Chkd.	Engr.	Supv.
B&V Project: 197505					



Drawn	Date	Scale: SEE PLAN
Chkd.	Design Engr.	Design Supv.

88005A MILVON TO WOODMONT (NORTH) 115KV TRANSMISSION LINE OPTION 1-DOUBLE CIRCUIT MONOPOLES PLAN & PROFILE		
CAD FILE NAME	SEQUENCE No.	DRAWING NUMBER
		MW-OP1-7



100.0 FT. HORIZ. SCALE
20.0 FT. VERT. SCALE



REFERENCE DRAWING
LATTICE MODIFICATIONS: 14213-591C

GENERAL NOTES:

1. AERIAL PHOTOGRAPHY IS FOR REFERENCE ONLY. LOCATIONS MAY NOT COINCIDE WITH OTHER INFORMATION SHOWN ON THE PAGE AS SEEN IN THE FIELD.
2. WIRE ATTACHMENT ELEVATIONS ARE BASED ON SURVEY ELEVATIONS.
3. POSITIVE LONGITUDINAL OFFSET SIGNIFIES THE PROPOSED MONOPOLE IS AHEAD SPAN FROM THE EXISTING CATENARY POST.

BLACK & VEATCH <i>Building on a world of difference</i>	
DESIGNER	DRAWN
CHECKED	DATE 9/29/2017
PROJECT #	195880

NO.	DATE	REVISION	EJ	ADD	DWM	
NO.	DATE	REVISION	DRN	DESN	CHKD	SUPR.
A	09/29/17	ISSUE FOR REVIEW				

NOTES:
SHIELD WIRE:
PRYSMIAN OPGW 6K-77S
SHOWN AT 60°F, NO WIND, FINAL
5000 LB DESIGN TENSION (NESC HEAVY)

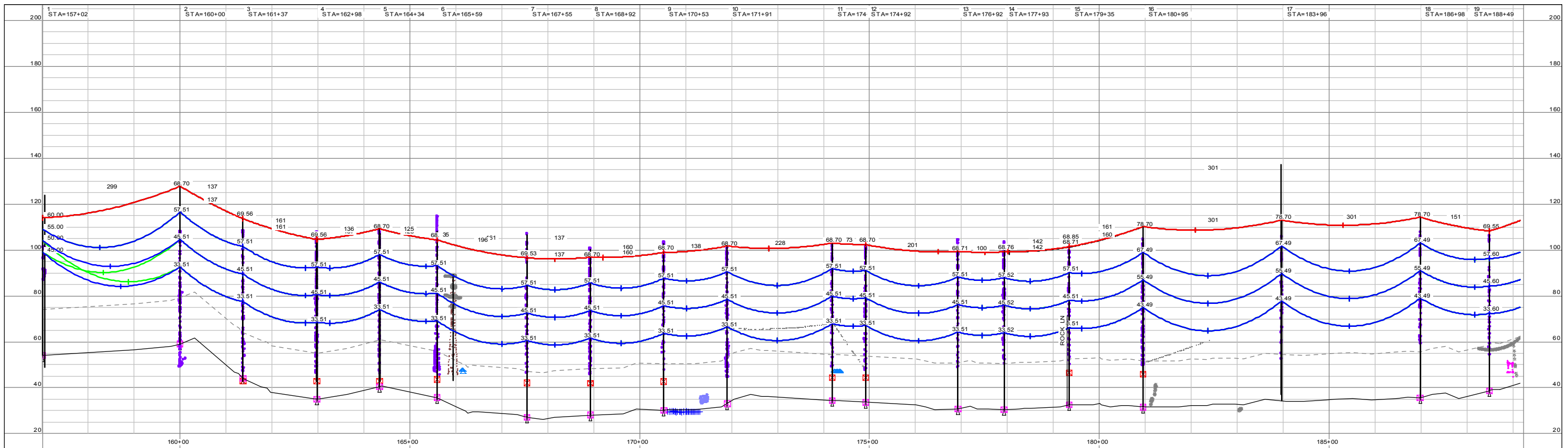
CONDUCTOR:
2156 KCMIL ACSS "BLUEBIRD"
SHOWN AT 392°F, NO WIND, FINAL
9000 LB DESIGN TENSION (NESC HEAVY)

No.	Date	Revision	By	Chkd.	Engr.	Supv.

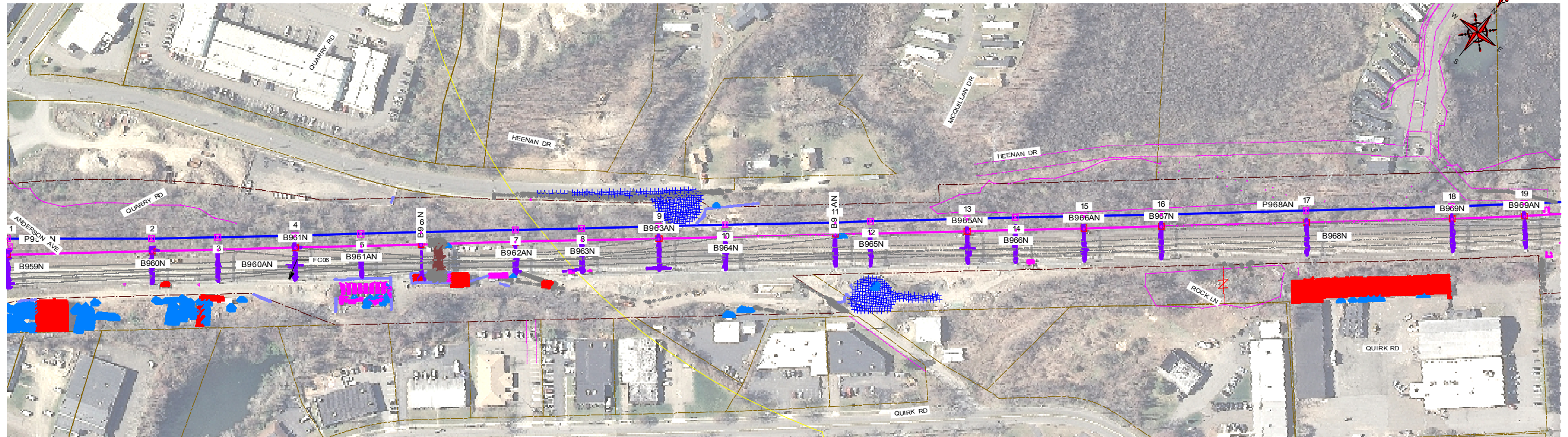


88005A MILVON TO WOODMONT (NORTH)
115KV TRANSMISSION LINE
OPTION 1-DOUBLE CIRCUIT MONOPOLES
PLAN & PROFILE

Drawn	Date	Scale: SEE PLAN	CAD FILE NAME	SEQUENCE No.	DRAWING NUMBER
Chkd.	Design Engr.	Design Supv.			MW-OP1-8



100.0 FT. HORIZ. SCALE
20.0 FT. VERT. SCALE



REFERENCE DRAWINGS
LATTICE MODIFICATIONS: 14213-591C

GENERAL NOTES:

1. AERIAL PHOTOGRAPHY IS FOR REFERENCE ONLY. LOCATIONS MAY NOT COINCIDE WITH OTHER INFORMATION ON THE PAGE AS SEEN IN THE FIELD.
2. WIRE ATTACHMENT ELEVATIONS ARE BASED ON SURVEY ELEVATIONS.
3. POSITIVE LONGITUDINAL OFFSET SIGNIFIES THE PROPOSED MONOPOLE IS AHEAD SPAN FROM THE EXISTING CATENARY POST.

BLACK & VEATCH Building on a world of difference	
DESIGNER	DRAWN
CHECKED	DATE 09/29/17
PROJECT #	195880

NO.	DATE	REVISION	EJ	ADD	DWM
NO.	DATE	REVISION	DRN	DESN	CHKD
A	09/29/17	ISSUE FOR REVIEW			

NOTES:

SHIELD WIRE:
PRYSMIAN OPGW 64K-77S
SHOWN AT 60°F, NO WIND, FINAL
5000 LB DESIGN TENSION (NESC HEAVY)

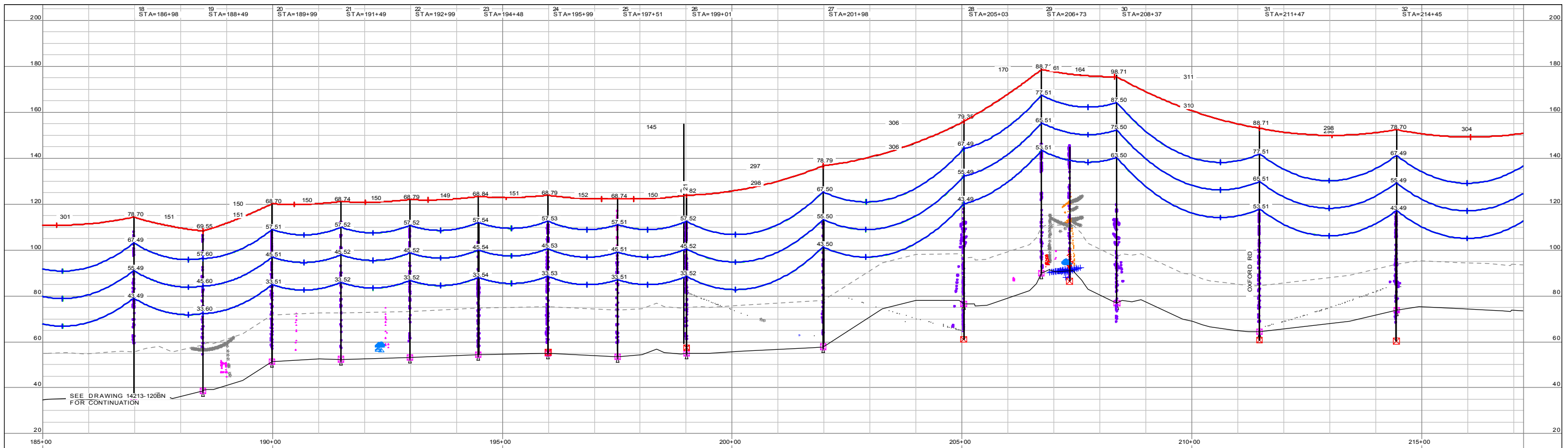
CONDUCTOR:
2156 KCMIL ACSS "BLUEBIRD"
SHOWN AT 392°F, NO WIND, FINAL
9000 LB DESIGN TENSION (NESC HEAVY)

Page 183	Revision	By	Chkd.	Engr.	Supv.
B&V Project: 197505					

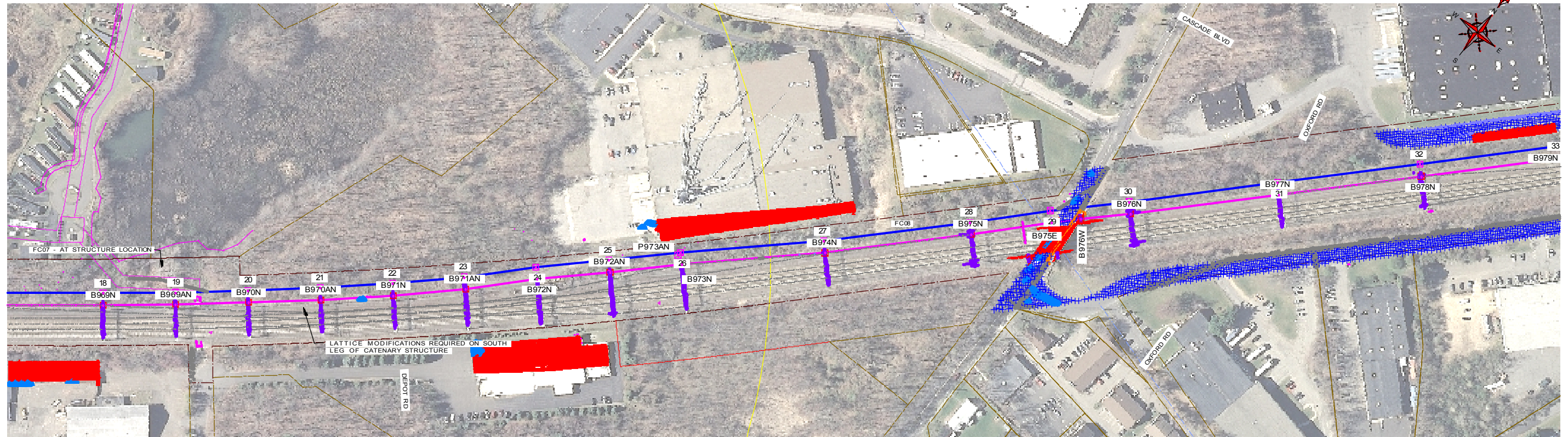


Drawn	Date	Scale: SEE PLAN
Chkd.	Design Engr.	Design Supv.

8804A - ALLINGS CROSSING TO WOODMONT (NORTH) 115KV OPTION 1 - DOUBLE CIRCUIT		
PLAN & PROFILE		
CAD FILE NAME	SEQUENCE No.	DRAWING NUMBER
		AW-OP1-1



100.0 FT. HORIZ. SCALE
20.0 FT. VERT. SCALE



REFERENCE DRAWINGS
LATTICE MODIFICATIONS: 14213-591C

GENERAL NOTES:

1. AERIAL PHOTOGRAPHY IS FOR REFERENCE ONLY. LOCATIONS MAY NOT COINCIDE WITH OTHER INFORMATION ON THE PAGE AS SEEN IN THE FIELD.
2. WIRE ATTACHMENT ELEVATIONS ARE BASED ON SURVEY ELEVATIONS.
3. POSITIVE LONGITUDINAL OFFSET SIGNIFIES THE PROPOSED MONOPOLE IS AHEAD SPAN FROM THE EXISTING CATENARY POST.

BLACK & VEATCH <i>Building on a world of difference</i>	
DESIGNER	DRAWN
CHECKED	DATE 09/29/17
PROJECT #	195880

NO.	DATE	REVISION	DRN	DESN	CHKD	SUPR.
A	09/29/17	ISSUE FOR REVIEW				

NOTES:

SHIELD WIRE
PRYSMIAN OPGW 64K-7/5
SHOWN AT 60°F, NO WIND, FINAL
5000 LB DESIGN TENSION (NESC HEAVY)

CONDUCTOR
2156 KCMIL ACSS "BLUEBIRD"
SHOWN AT 392°F, NO WIND, FINAL
9000 LB DESIGN TENSION (NESC HEAVY)

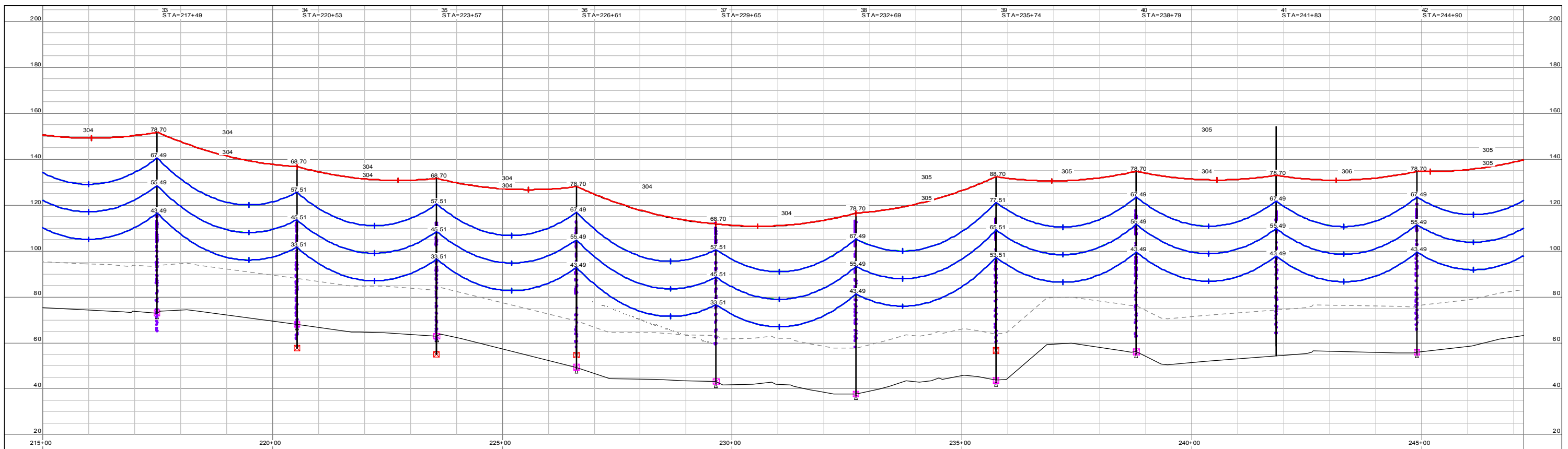
Page 184	Revision	By	Chkd.	Engr.	Supv.
B&V Project: 197505					



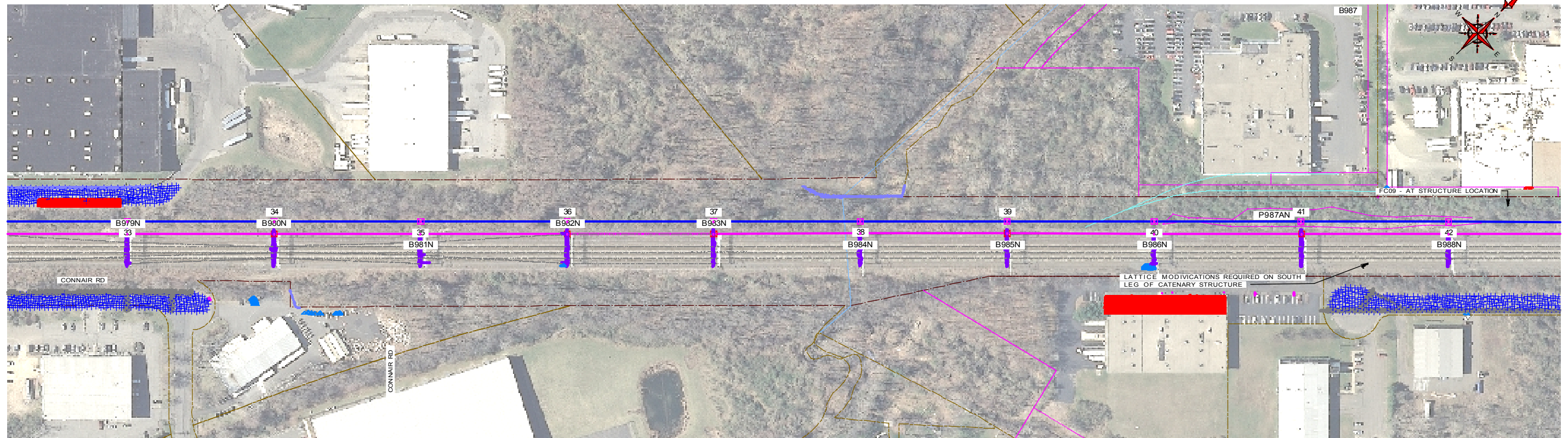
Drawn	Date	Scale: SEE PLAN
Chkd.	Design Engr.	Design Supv.

8804A - ALLINGS CROSSING TO WOODMONT (NORTH) 115KV
OPTION 1 - DOUBLE CIRCUIT
PLAN & PROFILE

CAD FILE NAME	SEQUENCE No.	DRAWING NUMBER
		AW-OP1-2



100.0 FT. HORIZ. SCALE
20.0 FT. VERT. SCALE



REFERENCE DRAWINGS
LATTICE MODIFICATIONS: 14213-591C

GENERAL NOTES:

1. AERIAL PHOTOGRAPHY IS FOR REFERENCE ONLY. LOCATIONS MAY NOT COINCIDE WITH OTHER INFORMATION ON THE PAGE AS SEEN IN THE FIELD.
2. WIRE ATTACHMENT ELEVATIONS ARE BASED ON SURVEY ELEVATIONS.
3. POSITIVE LONGITUDINAL OFFSET SIGNIFIES THE PROPOSED MONOPOLE IS AHEAD SPAN FROM THE EXISTING CATENARY POST.

BLACK & VEATCH Building on a world of difference	
DESIGNER	DRAWN
CHECKED	DATE 09/29/17
PROJECT #	195880

NO.	DATE	REVISION	DRN	DESN	CHKD	SUPR.
A	09/29/17	ISSUE FOR REVIEW				

NOTES:

SHIELD WIRE
PRYSMIAN OPGW 64K-77S
SHOWN AT 60°F, NO WIND, FINAL
5000 LB DESIGN TENSION (NESC HEAVY)

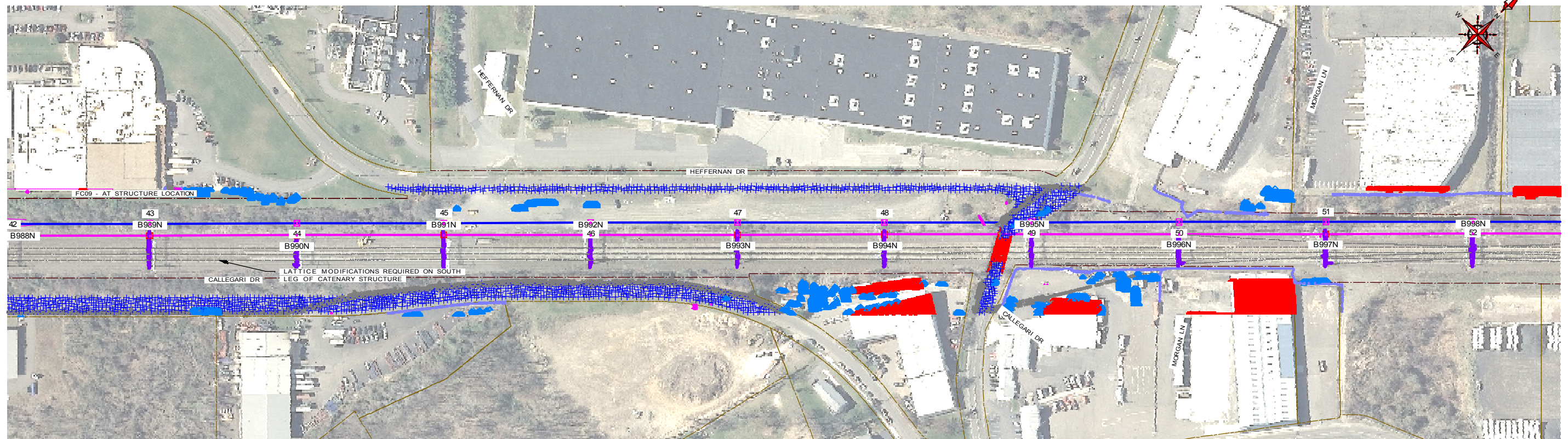
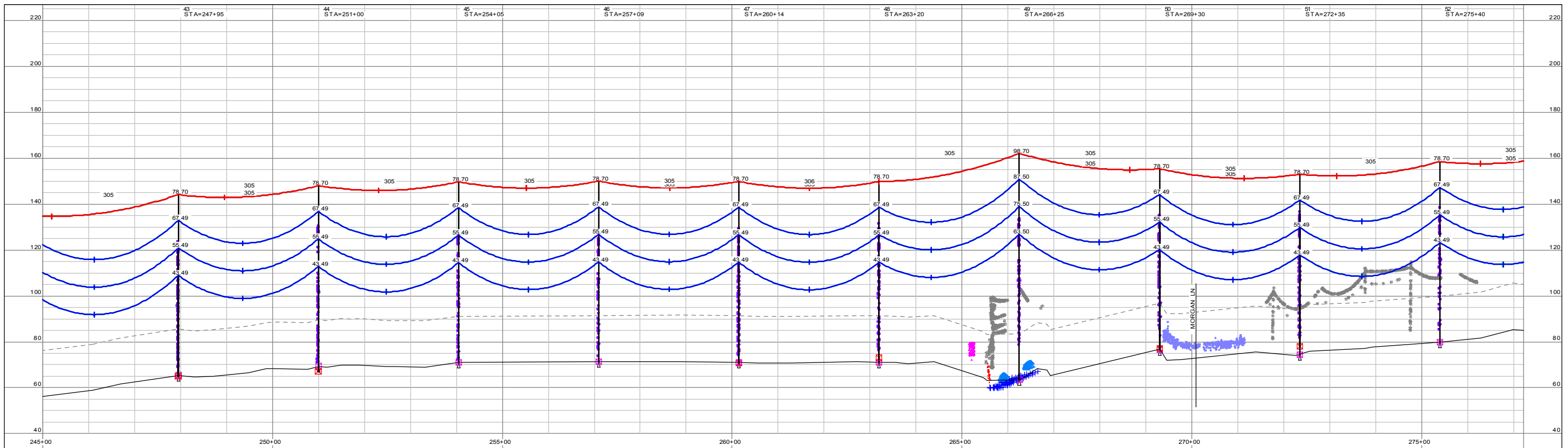
CONDUCTOR
2156 KCMIL ACSS "BLUEBIRD"
SHOWN AT 392°F, NO WIND, FINAL
9000 LB DESIGN TENSION (NESC HEAVY)

Page 185	Revision	By	Chkd.	Engr.	Supv.
B&V Project: 197505					



8804A - ALLINGS CROSSING TO WOODMONT (NORTH) 115KV
OPTION 1 - DOUBLE CIRCUIT
PLAN & PROFILE

Drawn	Date	Scale: SEE PLAN	CAD FILE NAME	SEQUENCE No.	DRAWING NUMBER
Chkd.	Design Engr.	Design Supv.			AW-OP1-3



REFERENCE DRAWINGS
LATTICE MODIFICATIONS: 14213-591C

GENERAL NOTES:

1. AERIAL PHOTOGRAPHY IS FOR REFERENCE ONLY. LOCATIONS MAY NOT COINCIDE WITH OTHER INFORMATION ON THE PAGE AS SEEN IN THE FIELD
2. WIRE ATTACHMENT ELEVATIONS ARE BASED ON SURVEY ELEVATIONS.
3. POSITIVE LONGITUDINAL OFFSET SIGNIFIES THE PROPOSED MONOPOLE IS AHEAD SPAN FROM THE EXISTING CATENARY POST.

BLACK & VEATCH <i>Building on a world of difference</i>	
DESIGNER	DRAWN
CHECKED	DATE 09/29/17
PROJECT #	195880

NO.	DATE	REVISION	EJ	ADD	DWM
NO.	DATE	REVISION	DRN	DESN	CHKD
A	09/29/17	ISSUE FOR REVIEW			

NOTES:
SHIELD WIRE:
PRYSMIAN OPGW 64K-77S
SHOWN AT 80°F, NO WIND, FINAL
5000 LB DESIGN TENSION (NESC HEAVY)
CONDUCTOR:
2156 KCMIL ACSS 'BLUEBIRD'
SHOWN AT 392°F, NO WIND, FINAL
9000 LB DESIGN TENSION (NESC HEAVY)

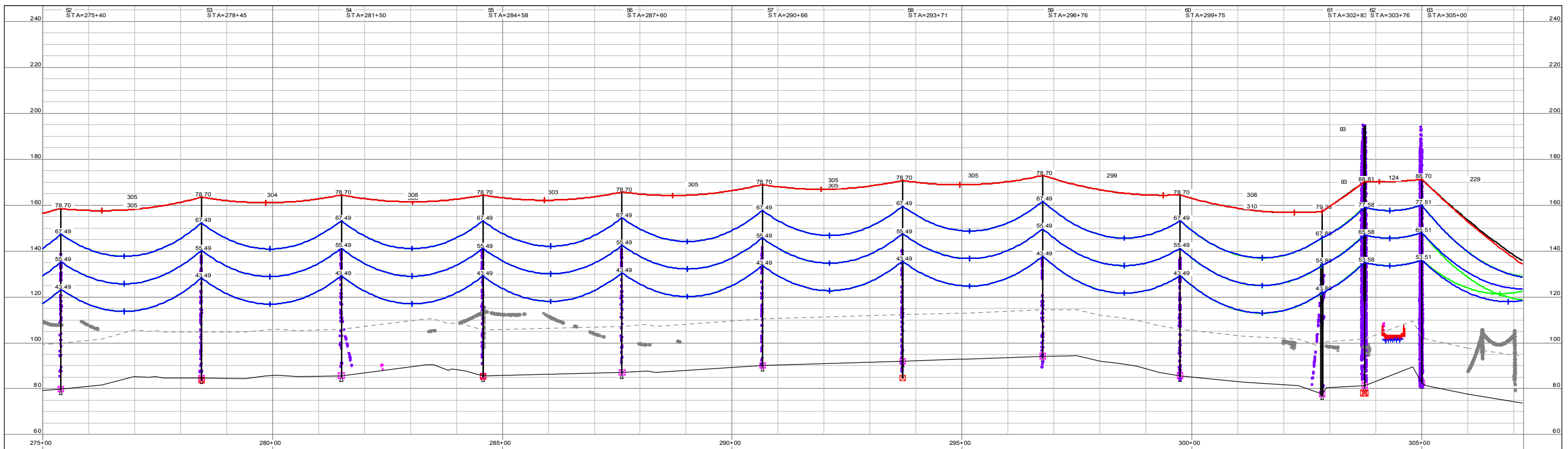
Page 186	Revision	By	Chkd.	Engr.	Supv.
No.	Date				



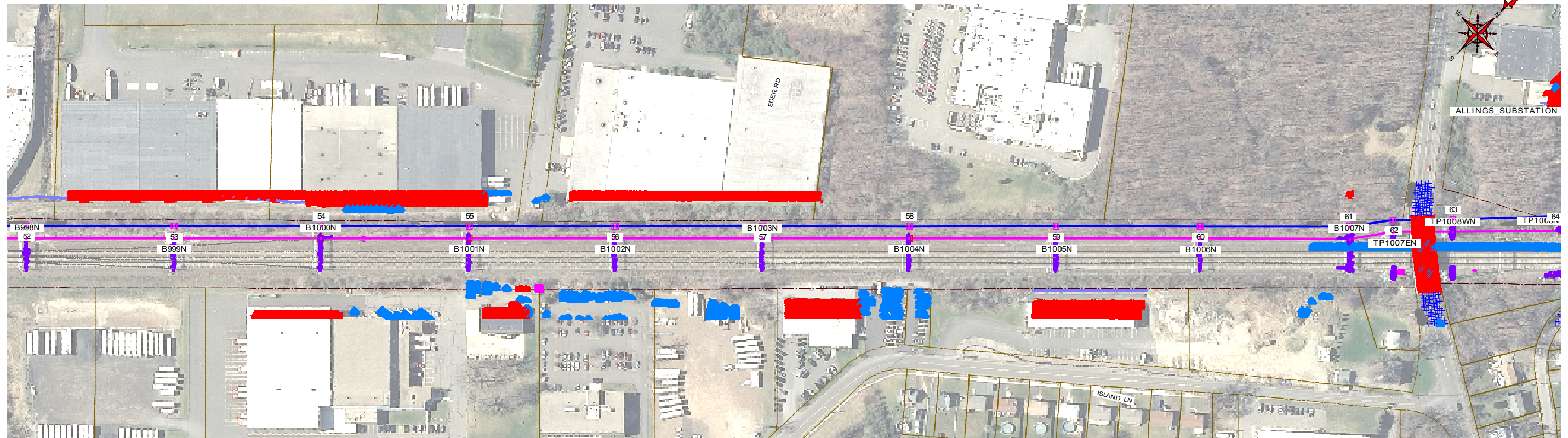
Drawn	Date	Scale: SEE PLAN
Chkd.	Design Engr.	Design Supv.

8804A - ALLINGS CROSSING TO WOODMONT (NORTH) 115KV
OPTION 1 - DOUBLE CIRCUIT
PLAN & PROFILE

CAD FILE NAME	SEQUENCE No.	DRAWING NUMBER
		AW-OP1-4



100.0 FT. HORIZ. SCALE
20.0 FT. VERT. SCALE



REFERENCE DRAWINGS
LATTICE MODIFICATIONS: 14213-591C

GENERAL NOTES:

1. AERIAL PHOTOGRAPHY IS FOR REFERENCE ONLY. LOCATIONS MAY NOT COINCIDE WITH OTHER INFORMATION ON THE PAGE AS SEEN IN THE FIELD.
2. WIRE ATTACHMENT ELEVATIONS ARE BASED ON SURVEY ELEVATIONS.
3. POSITIVE LONGITUDINAL OFFSET SIGNIFIES THE PROPOSED MONOPOLE IS AHEAD SPAN FROM THE EXISTING CATENARY POST.

NOTES:

SHIELD WIRE:
PRYSMIAN OPGW 64K-77S
SHOWN AT 60°F, NO WIND, FINAL
5000 LB DESIGN TENSION (NESC HEAVY)

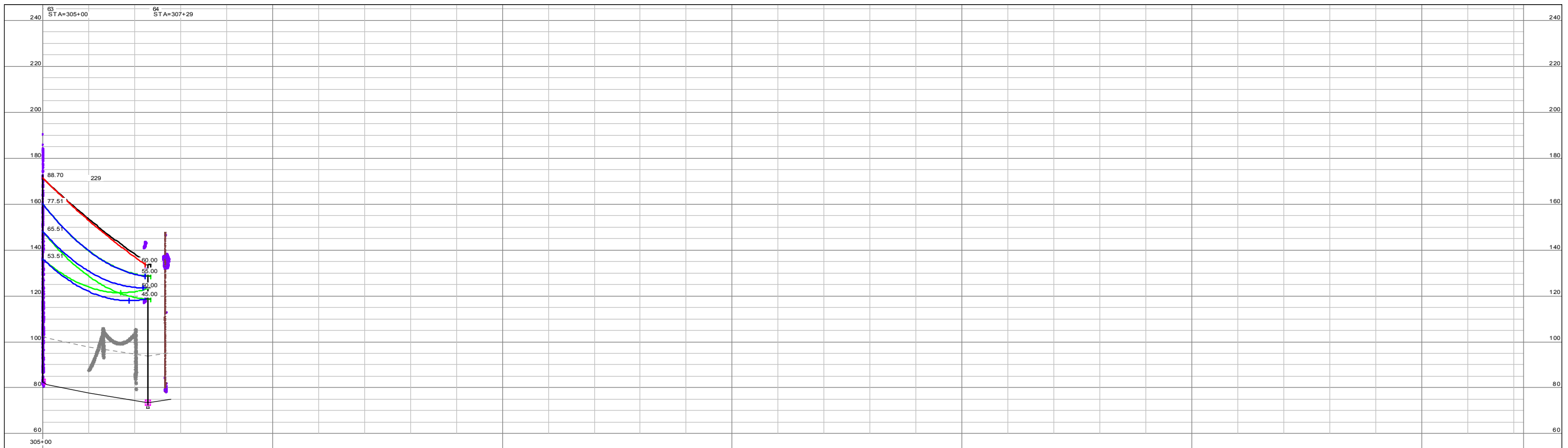
CONDUCTOR:
2156 KCMIL ACSS "BLUEBIRD"
SHOWN AT 392°F, NO WIND, FINAL
9000 LB DESIGN TENSION (NESC HEAVY)

DESIGNER	DRAWN					
CHECKED	DATE 09/29/17					
PROJECT #	195880					
A	09/29/17	ISSUE FOR REVIEW	EJ	ADD	DWM	
NO	DATE	REVISION	DRN	DESN	CHKD	SUPR.

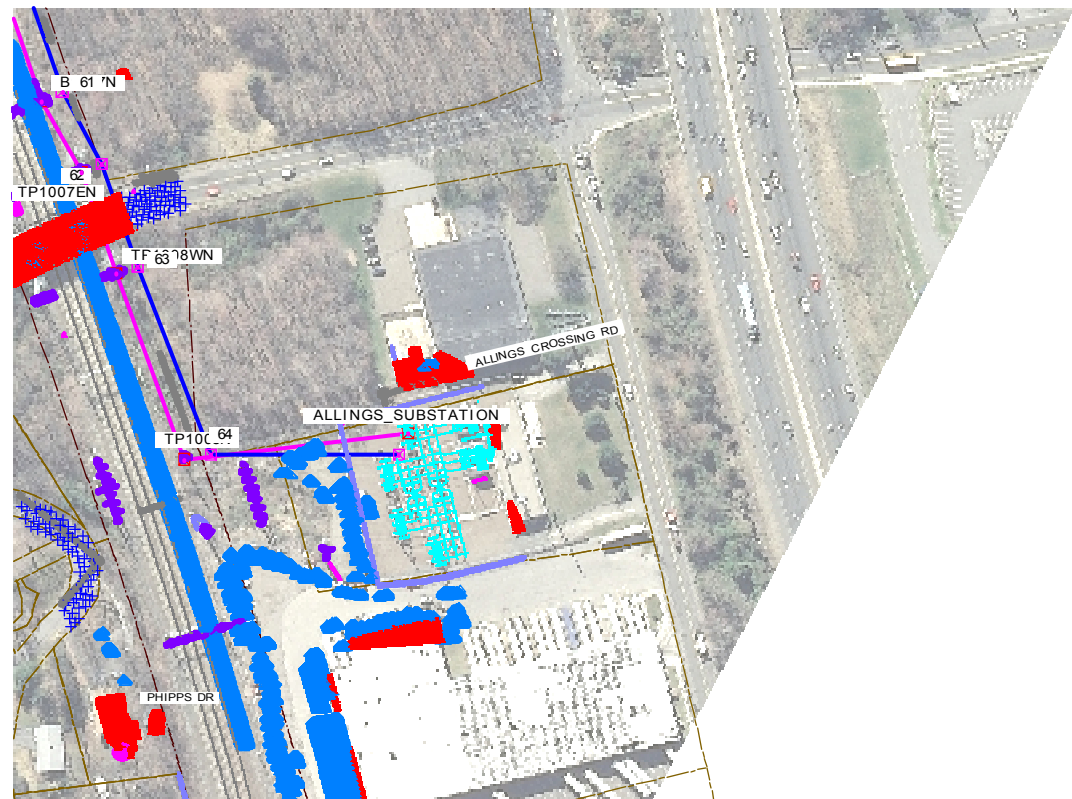
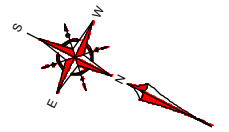


8804A - ALLINGS CROSSING TO WOODMONT (NORTH) 115KV
OPTION 1 - DOUBLE CIRCUIT
PLAN & PROFILE

CAD FILE NAME	SEQUENCE No.	DRAWING NUMBER
		AW-OP1-5



100.0 FT. HORIZ. SCALE
20.0 FT. VERT. SCALE



REFERENCE DRAWINGS
LATTICE MODIFICATIONS: 14213-591C

GENERAL NOTES:

1. AERIAL PHOTOGRAPHY IS FOR REFERENCE ONLY. LOCATIONS MAY NOT COINCIDE WITH OTHER INFORMATION ON THE PAGE AS SEEN IN THE FIELD
2. WIRE ATTACHMENT ELEVATIONS ARE BASED ON SURVEY ELEVATIONS.
3. POSITIVE LONGITUDINAL OFFSET SIGNIFIES THE PROPOSED MONOPOLE IS AHEAD SPAN FROM THE EXISTING CATERNARY POST.

BLACK & VEATCH <i>Building on a world of difference</i>	
DESIGNER	DRAWN
CHECKED	DATE 09/29/17
PROJECT #	195880

NO.	DATE	REVISION	DRN	DESN	CHKD	SUPR.
A	09/29/17	ISSUE FOR REVIEW				

NOTES:

SHIELD WIRE:
PRYSMIAN OPGW 64K-77S
SHOWN AT 80°F, NO WIND, FINAL
5000 LB DESIGN TENSION (NESC HEAVY)

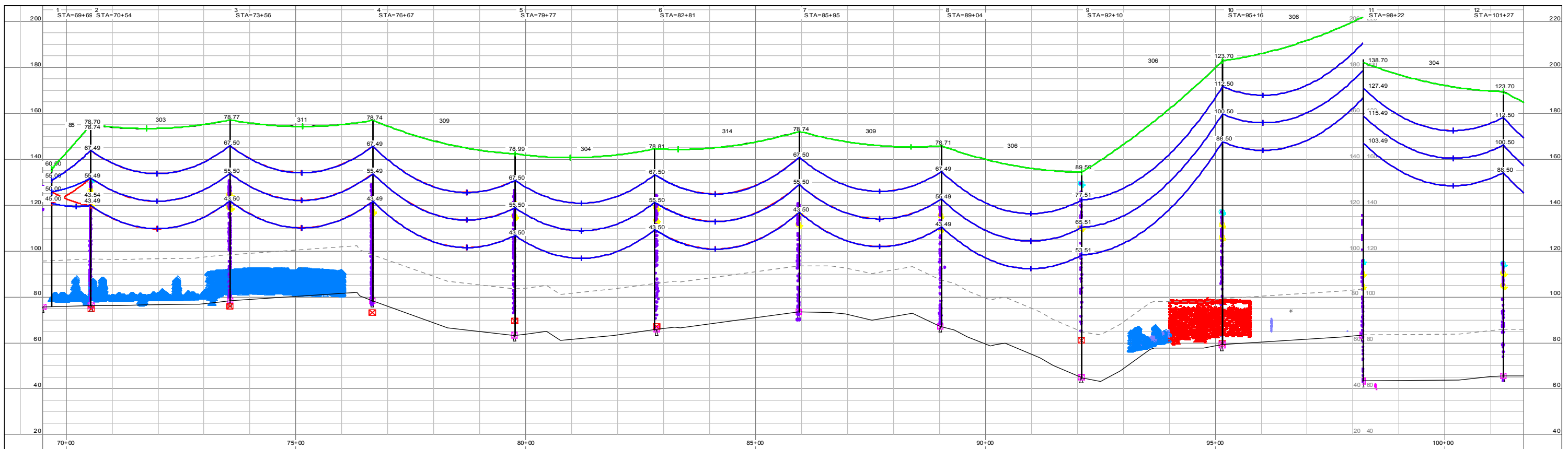
CONDUCTOR:
2156 KCMIL ACSS "BLUEBIRD"
SHOWN AT 392°F, NO WIND, FINAL
9000 LB DESIGN TENSION (NESC HEAVY)

Page 188	Revision	By	Chkd.	Engr.	Supv.
B&V Project: 197505					

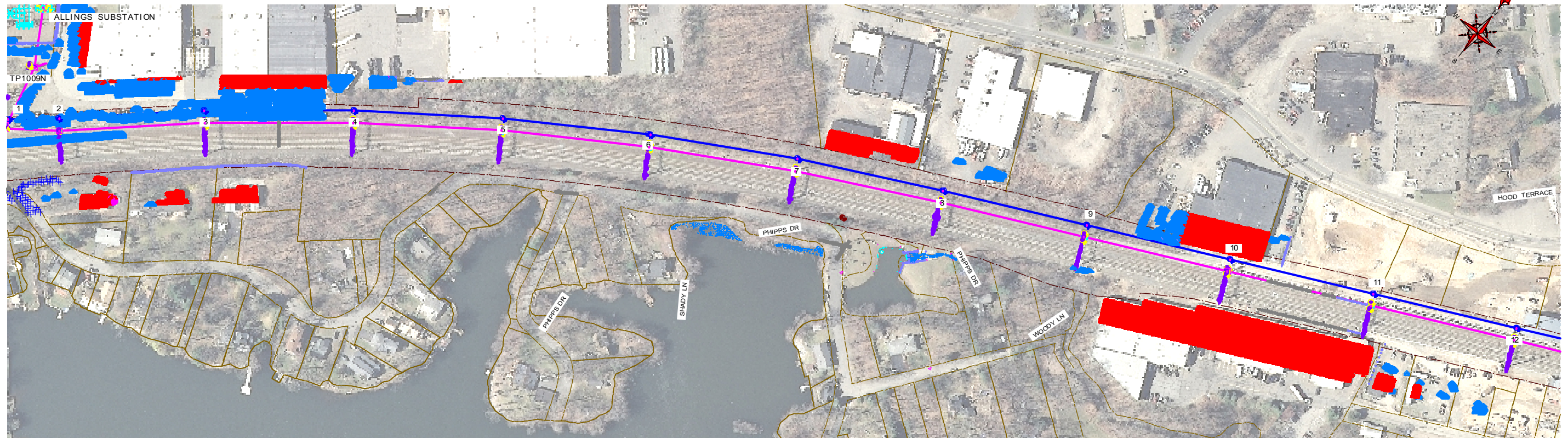


8804A - ALLINGS CROSSING TO WOODMONT (NORTH) 115KV
OPTION 1 - DOUBLE CIRCUIT
PLAN & PROFILE

Drawn	Date	Scale: SEE PLAN	CAD FILE NAME	SEQUENCE No.	DRAWING NUMBER
Chkd.	Design Engr.	Design Supv.			AW-OP1-6



100.0 FT. HORIZ. SCALE
20.0 FT. VERT. SCALE



GENERAL NOTES:
 1. AERIAL PHOTOGRAPHY IS FOR REFERENCE ONLY. LOCATIONS MAY NOT COINCIDE WITH OTHER INFORMATION ON THE PAGE AS SEEN IN THE FIELD.
 2. WIRE ATTACHMENT ELEVATIONS ARE BASED ON SURVEY ELEVATIONS.
 3. POSITIVE LONGITUDINAL OFFSET SIGNIFIES THE PROPOSED MONOPOLE IS AHEAD SPAN FROM THE EXISTING CATENARY POST

NOTES:
 SHIELD WIRE
 PRYSMIAN OPGW 64K-77S
 SHOWN AT 60°F. NO WIND. FINAL
 5000 LB DESIGN TENSION (NESC HEAVY)
 CONDUCTOR:
 2156 KCMIL ACSS "BLUEBIRD"
 SHOWN AT 392°F. NO WIND. FINAL
 9500 LB DESIGN TENSION (NESC HEAVY)



DESIGNER: [] DRAWN: []
 CHECKED: [] DATE: 09/29/17
 PROJECT #: 195880

NO.	DATE	REVISION	DRN	DESN	CHKD	SUPR.
A	09/29/17	ISSUE FOR REVIEW				

Page 180
 B&V Project: 197505

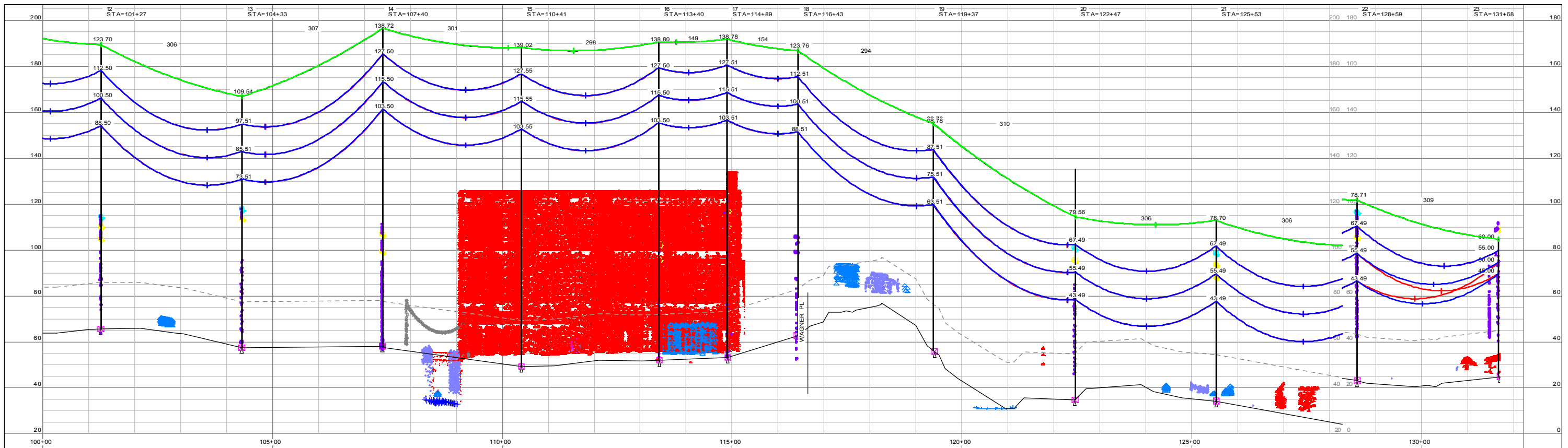


Drawn: [] Date: [] Scale: SEE PLAN
 Chkd: [] Design Engr.: [] Design Supv.: []

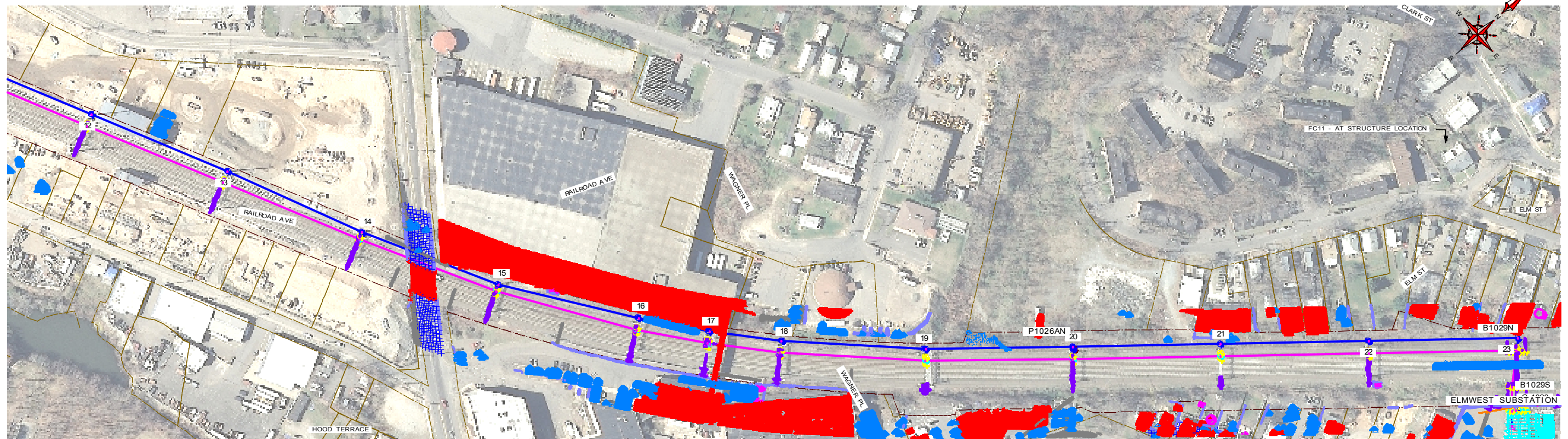
88003A-3 ELMWEST
 TO ALLINGS CROSSING 115KV
 OPTION 1 - DOUBLE CIRCUIT

PLAN & PROFILE

CAD FILE NAME	SEQUENCE No.	DRAWING NUMBER
		AE-OP1-1



100.0 FT. HORIZ. SCALE
20.0 FT. VERT. SCALE



GENERAL NOTES:
 1. AERIAL PHOTOGRAPHY IS FOR REFERENCE ONLY. LOCATIONS MAY NOT COINCIDE WITH OTHER INFORMATION ON THE PAGE AS SEEN IN THE FIELD.
 2. WIRE ATTACHMENT ELEVATIONS ARE BASED ON SURVEY ELEVATIONS.
 3. POSITIVE LONGITUDINAL OFFSET SIGNIFIES THE PROPOSED MONOPOLE IS AHEAD SPAN FROM THE EXISTING CATENARY POST

NOTES:
 SHIELD WIRE
 PRYSMIAN OPGW 64K-77S
 SHOWN AT 60°F. NO WIND. FINAL
 5000 LB DESIGN TENSION (NESC HEAVY)
 CONDUCTOR:
 2156 KCMIL ACSS "BLUEBIRD"
 SHOWN AT 392°F. NO WIND. FINAL
 9500 LB DESIGN TENSION (NESC HEAVY)



DESIGNER	DRAWN
CHECKED	DATE 09/29/17
PROJECT #	195880

NO.	DATE	REVISION	DRN	DESN	CHKD	SUPR.
A	09/29/17	ISSUE FOR REVIEW				

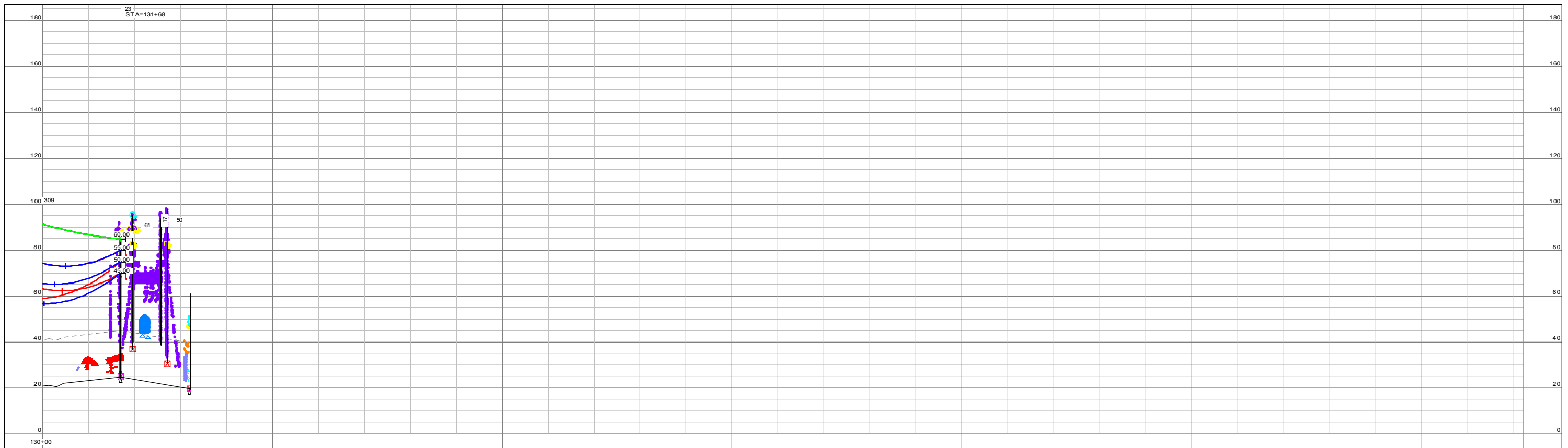
Page 400
B&V Project: 197505

Revision _____ By _____ Chkd. _____ Engr. _____ Supv. _____

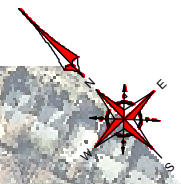


Drawn _____ Date _____ Scale: SEE PLAN
 Chkd. _____ Design Engr. _____ Design Supv. _____

88003A-3 ELMWEST TO ALLINGS CROSSING 115KV OPTION 1 - DOUBLE CIRCUIT		
PLAN & PROFILE		
CAD FILE NAME	SEQUENCE No.	DRAWING NUMBER
		AE-OP1-2



100.0 FT. HORIZ. SCALE
20.0 FT. VERT. SCALE



GENERAL NOTES:
 1. AERIAL PHOTOGRAPHY IS FOR REFERENCE ONLY. LOCATIONS MAY NOT COINCIDE WITH OTHER INFORMATION ON THE PAGE AS SEEN IN THE FIELD.
 2. WIRE ATTACHMENT ELEVATIONS ARE BASED ON SURVEY ELEVATIONS.
 3. POSITIVE LONGITUDINAL OFFSET SIGNIFIES THE PROPOSED MONOPOLE IS AHEAD SPAN FROM THE EXISTING CATENARY POST

NOTES:
 SHIELD WIRE
 PRYSMIAN OPGW 64K-77S
 SHOWN AT 60°F. NO WIND. FINAL
 5000 LB DESIGN TENSION (NESC HEAVY)
 CONDUCTOR:
 2156 KCMIL ACSS "BLUEBIRD"
 SHOWN AT 392°F. NO WIND. FINAL
 9500 LB DESIGN TENSION (NESC HEAVY)



DESIGNER: [] DRAWN: []
 CHECKED: [] DATE: 09/29/17
 PROJECT #: 195880

NO.	DATE	REVISION	DRN	DESN	CHKD	SUPR.
A	09/29/17	ISSUE FOR REVIEW				

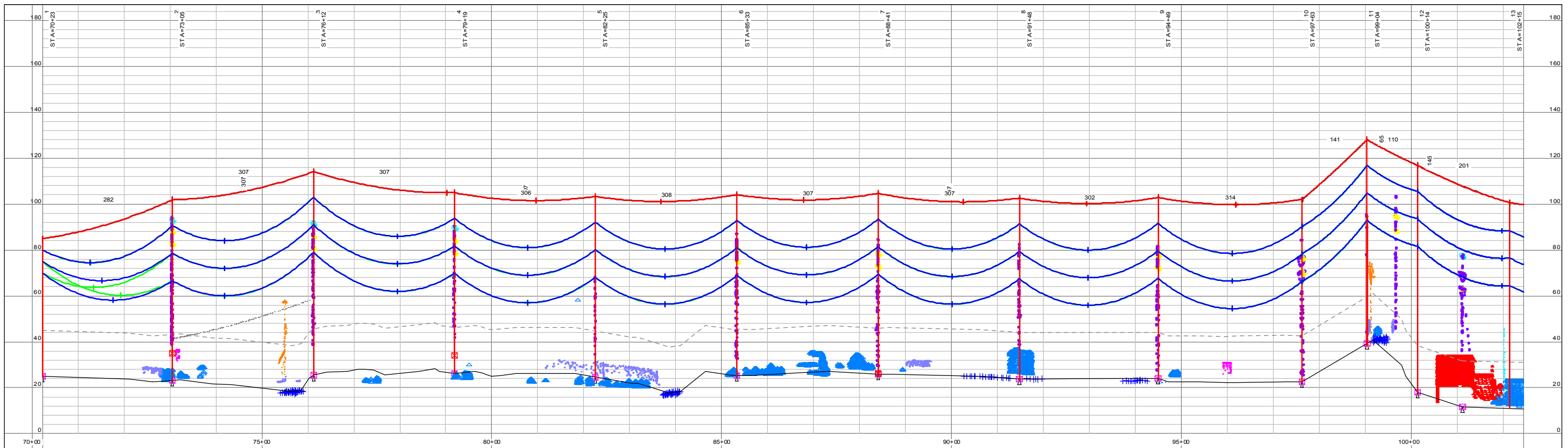
No.	Date	Revision	By	Chkd.	Engr.	Supv.



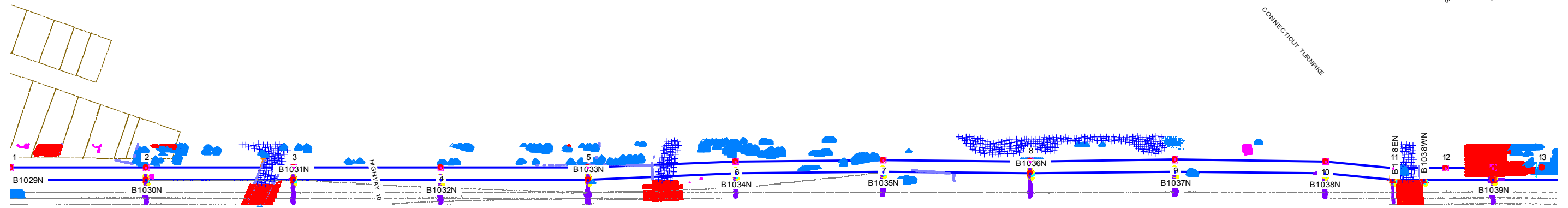
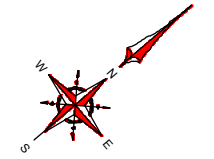
88003A-3 ELMWEST
 TO ALLINGS CROSSING 115KV
 OPTION 1 - DOUBLE CIRCUIT

CAD FILE NAME	SEQUENCE No.	DRAWING NUMBER
		AE-OP1-3

Drawn: [] Date: [] Scale: SEE PLAN
 Chkd.: [] Design Engr.: [] Design Supv.: []



100.0 FT. HORIZ. SCALE
20.0 FT. VERT. SCALE



NOTES:
SHIELD WIRE:
PRYSMIAN OPGW 64-775
SHOWN AT 60°F, NO WIND, FINAL
5000 LB DESIGN TENSION (NESC HEAVY)
CONDUCTOR:
2156 KCMIL ACSS "BLUEBIRD"
SHOWN AT 392°F, NO WIND, FINAL
9500 LB DESIGN TENSION (NESC HEAVY)

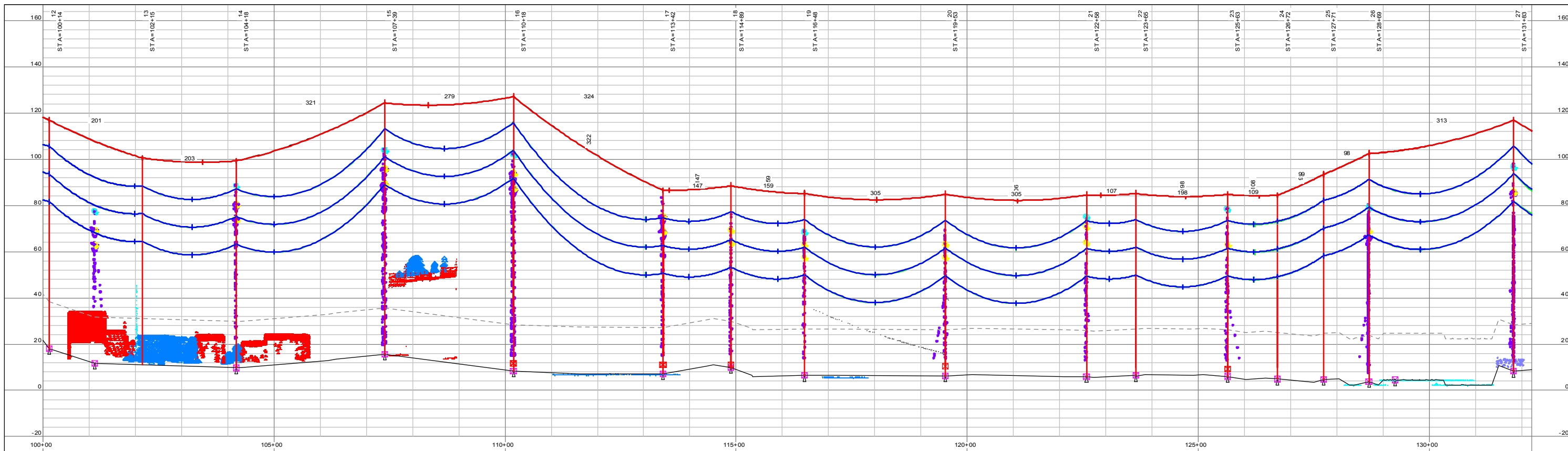
BLACK & VEATCH <i>Building a world of difference</i>	
PROJECT NO.	176578
DRAWN	BV
DESIGNED	
APPROVED	
CHECKED	

No.	Date	BY	Chkd.	Engr.	Supv.
1	07/13/19	BV			
FOR REVIEW					
B&V Project: 197505					

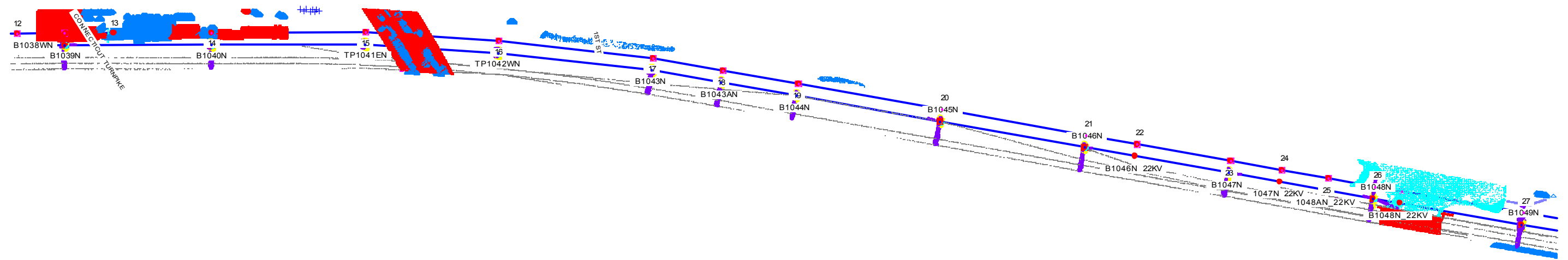
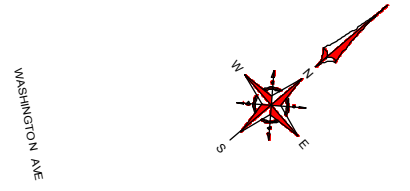


89003A-2 - WEST RIVER TO ELMWEST
115 KV
OPTION 1 - DOUBLE CIRCUIT
PLAN & PROFILE

CAD FILE NAME	SEQUENCE No.	DRAWING NUMBER
		EW-OP1-1



100.0 FT. HORIZ. SCALE
20.0 FT. VERT. SCALE



NOTES:
SHIELD WIRE:
PRYSMIAN OPGW 66-77S
SHOWN AT 60°F, NO WIND, FINAL
5000 LB DESIGN TENSION (NESC HEAVY)
CONDUCTOR:
2156 KCMIL ACSS "BLUEBIRD"
SHOWN AT 392°F, NO WIND, FINAL
9500 LB DESIGN TENSION (NESC HEAVY)

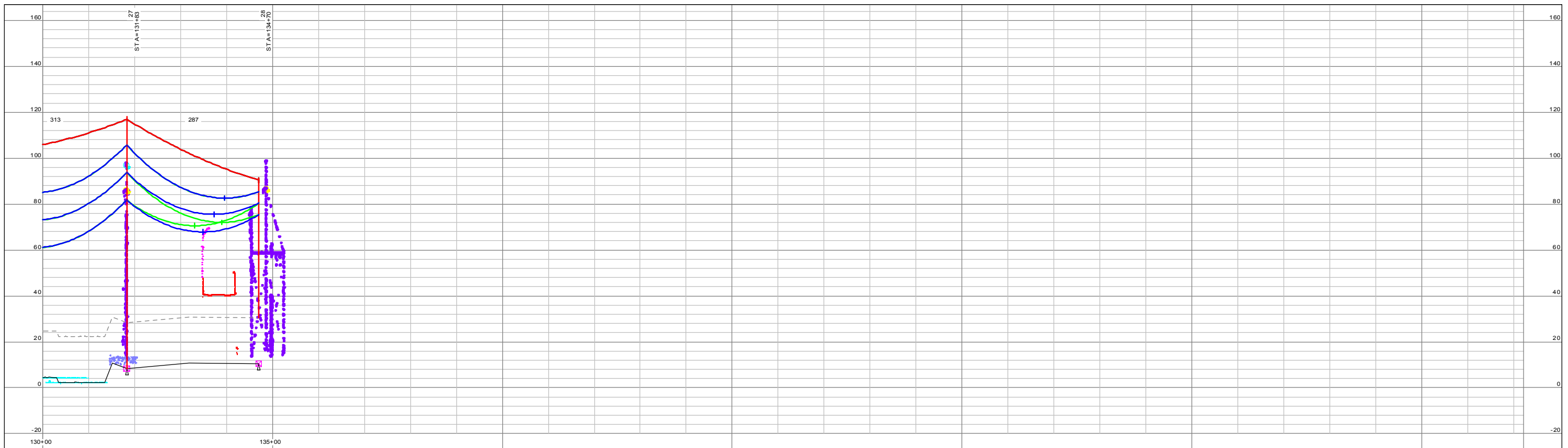
BLACK & VEATCH <i>Building a world of difference</i>	
PROJECT NO.	176578
DRAWN	BV
DESIGNED	
APPROVED	
CHECKED	

No.	Date	Description	By	Chkd.	Engr.	Supv.

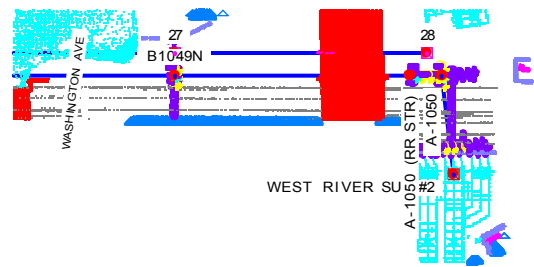
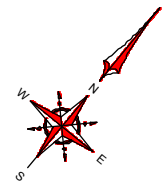


89003A-2 - WEST RIVER TO ELMWEST
115 KV
OPTION 1 - DOUBLE CIRCUIT
PLAN & PROFILE

CAD FILE NAME	SEQUENCE No.	DRAWING NUMBER
		EW-OP1-2



100.0 FT. HORIZ. SCALE
20.0 FT. VERT. SCALE



NOTES:
SHIELD WIRE:
PRYSMIAN OPGW 64-77S
SHOWN AT 60°F, NO WIND, FINAL
5000 LB DESIGN TENSION (NESC HEAVY)
CONDUCTOR:
2156 KCMIL ACSS "BLUEBIRD"
SHOWN AT 392°F, NO WIND, FINAL
9500 LB DESIGN TENSION (NESC HEAVY)

BLACK & VEATCH <i>Building a world of difference</i>	
PROJECT NO.	176578
DRAWN	BV
DESIGNED	
APPROVED	
CHECKED	

Page 1 of 4
B&V Project: 197505

Revision

By Chkd. Engr. Supv.



Drawn _____ Date _____ Scale: SEE PLAN
Chkd. _____ Design Engr. _____ Design Supv. _____

89003A-2 - WEST RIVER TO ELMWEST
115 KV
OPTION 1 - DOUBLE CIRCUIT
PLAN & PROFILE

CAD FILE NAME	SEQUENCE No.	DRAWING NUMBER
		EW-OP1-3