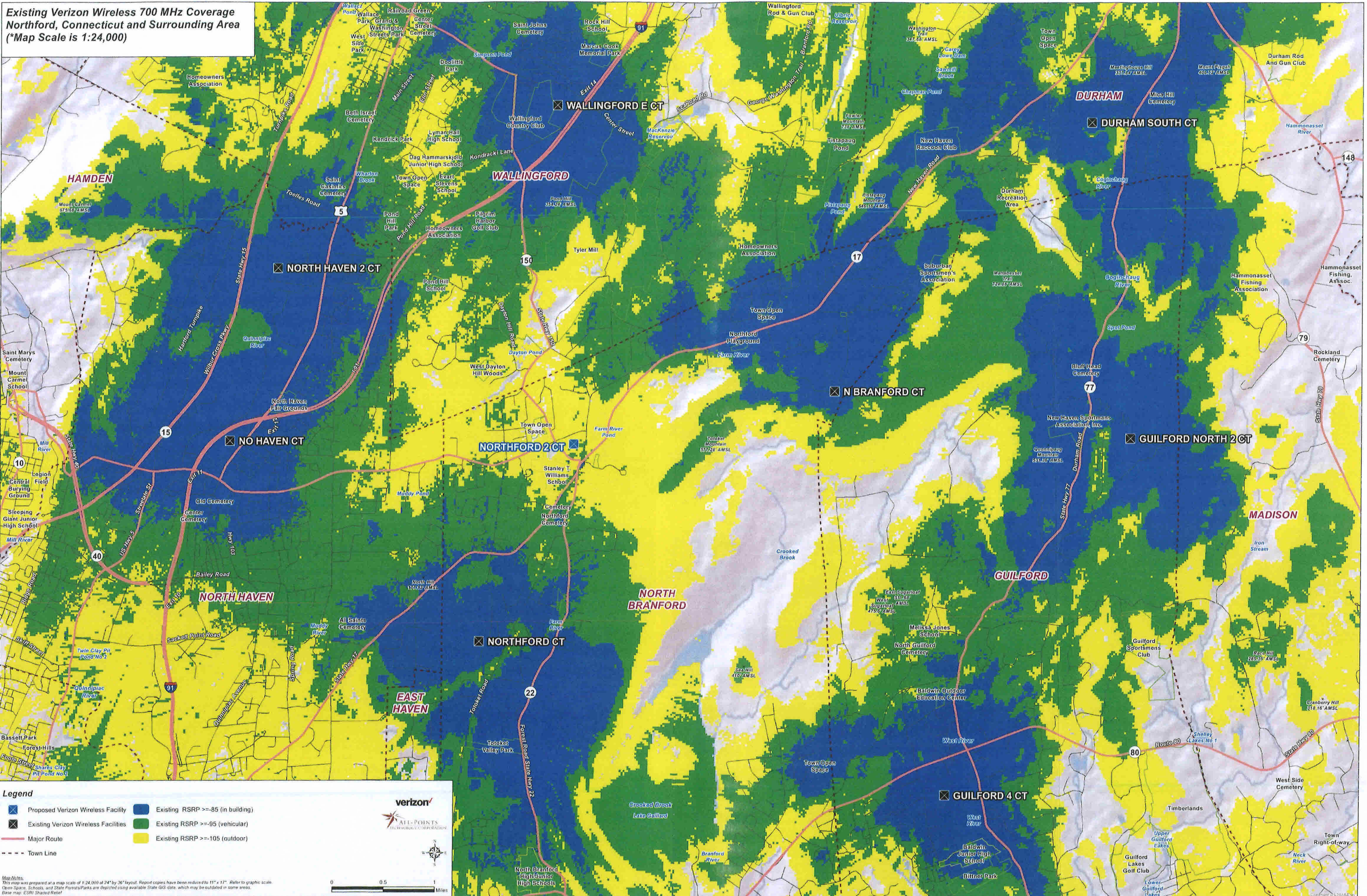


**Existing Verizon Wireless 700 MHz Coverage  
Northford, Connecticut and Surrounding Area  
(\*Map Scale is 1:24,000)**



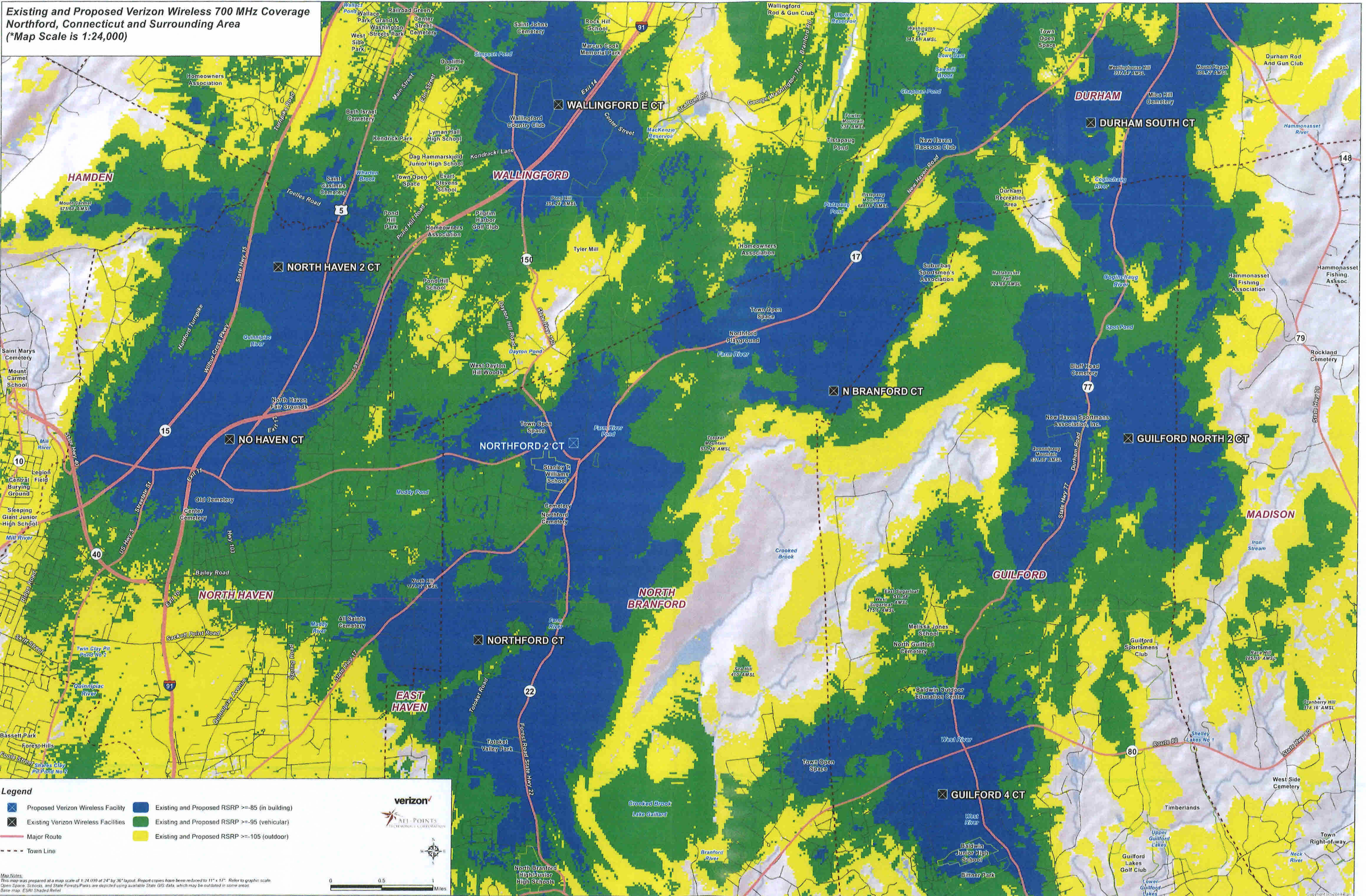
- Legend**
- Proposed Verizon Wireless Facility
  - Existing RSRP >= -85 (in building)
  - Existing Verizon Wireless Facilities
  - Existing RSRP >= -95 (vehicular)
  - Major Route
  - Existing RSRP >= -105 (outdoor)
  - - - Town Line



**Map Notes**  
This map was prepared at a map scale of 1:24,000 at 24" by 36" layout. Report copies have been reduced to 11" x 17". Refer to graphic scale.  
Open Spaces, Schools, and State Parks are depicted using available State GIS data, which may be outdated in some areas.  
Base map: ESRI Shaded Relief



**Existing and Proposed Verizon Wireless 700 MHz Coverage  
Northford, Connecticut and Surrounding Area  
(\*Map Scale is 1:24,000)**



**Legend**

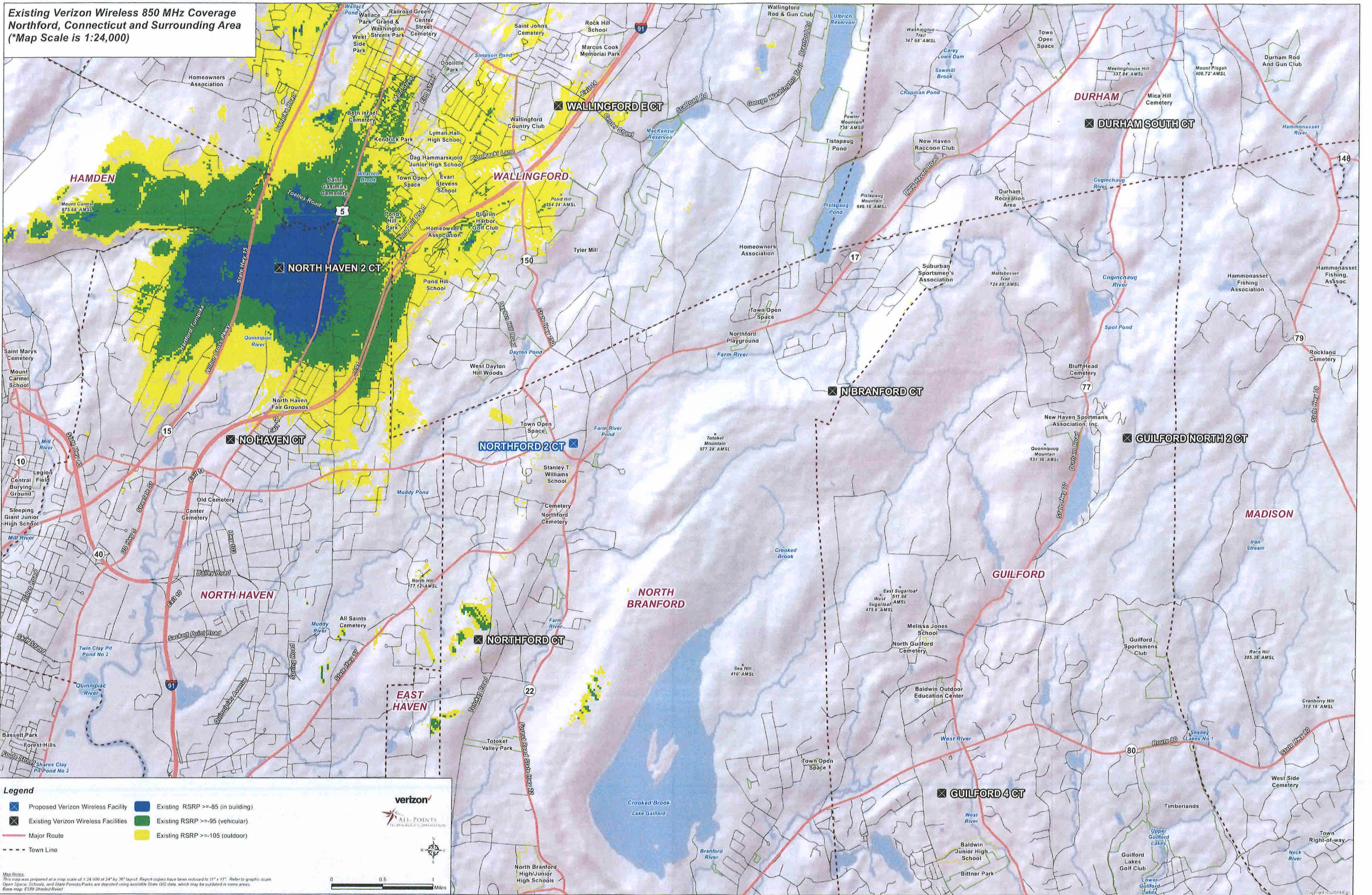
- Proposed Verizon Wireless Facility
- Existing Verizon Wireless Facilities
- Major Route
- - - Town Line
- Existing and Proposed RSRP >= -85 (in building)
- Existing and Proposed RSRP >= -95 (vehicular)
- Existing and Proposed RSRP >= -105 (outdoor)

**Map Notes:**  
This map was prepared at a map scale of 1:24,000 at 24" by 36" layout. Report covers have been reduced to 11" x 17". Refer to graphic scale.  
Open Space, Schools, and State Forests/Parks are depicted using available State GIS data, which may be outdated in some areas.  
Date map: ESRI Shaded Relief

**Verizon**  
ALL POINTS  
TECHNOLOGIES CORPORATION

0 0.5 1 Miles

**Existing Verizon Wireless 850 MHz Coverage  
Northford, Connecticut and Surrounding Area  
(\*Map Scale is 1:24,000)**



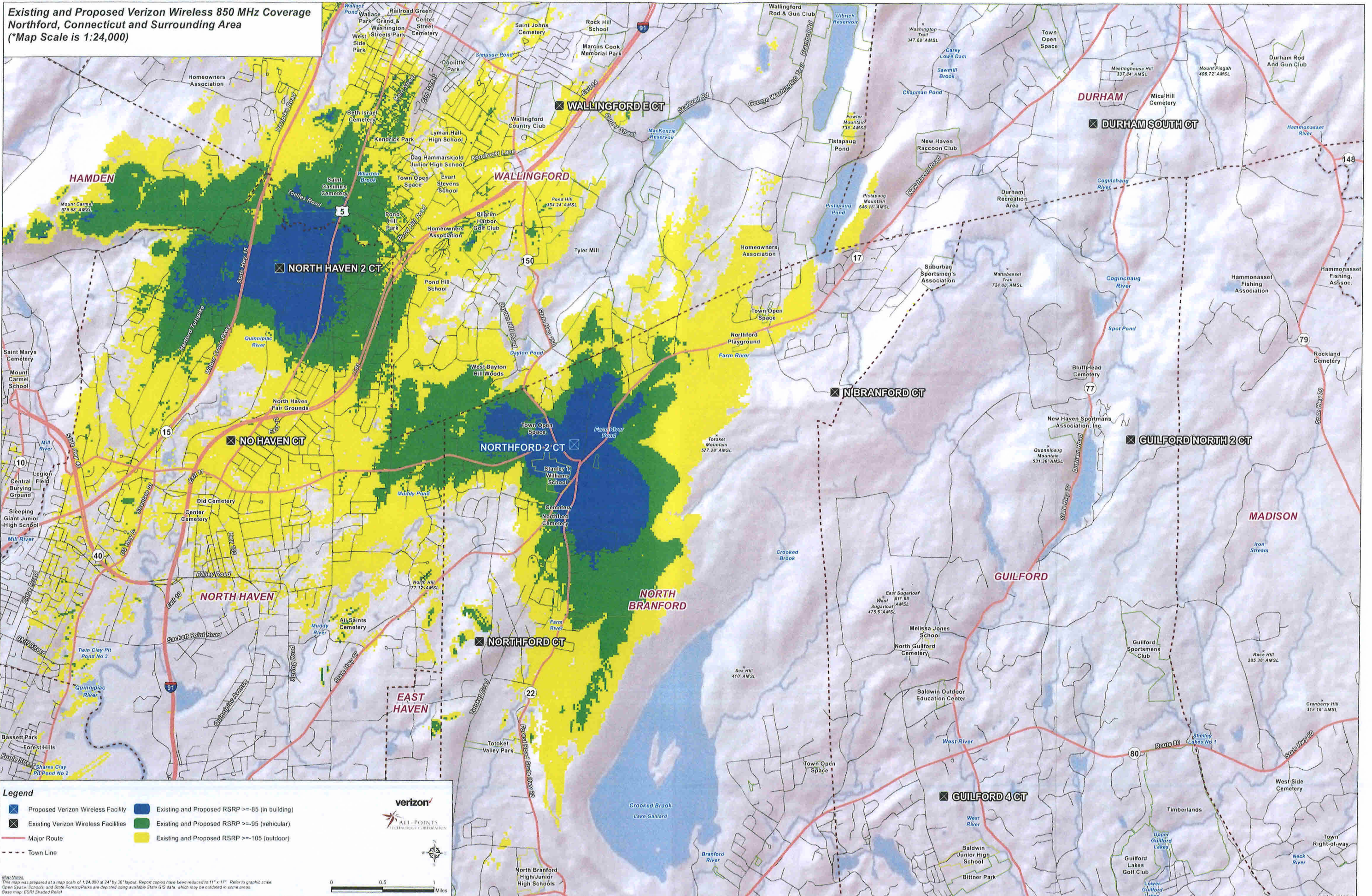
**Legend**

- Proposed Verizon Wireless Facility
- Existing RSRP >= -85 (in building)
- Existing Verizon Wireless Facilities
- Existing RSRP >= -95 (vehicular)
- Major Route
- Existing RSRP >= -105 (outdoor)
- Town Line

**Map Notes:**  
 This map was prepared at a map scale of 1:24,000 at 24" by 36" layout. Report copies have been reduced to 11" x 17". Refer to graphic scale.  
 Open Space, Schools, and State Forests/Parks are depicted using available State GIS data, which may be outdated in some areas.  
 Date map: E301 Shaded Relief

0 0.5 1 Miles

**Existing and Proposed Verizon Wireless 850 MHz Coverage  
Northford, Connecticut and Surrounding Area  
(\*Map Scale is 1:24,000)**



**Legend**

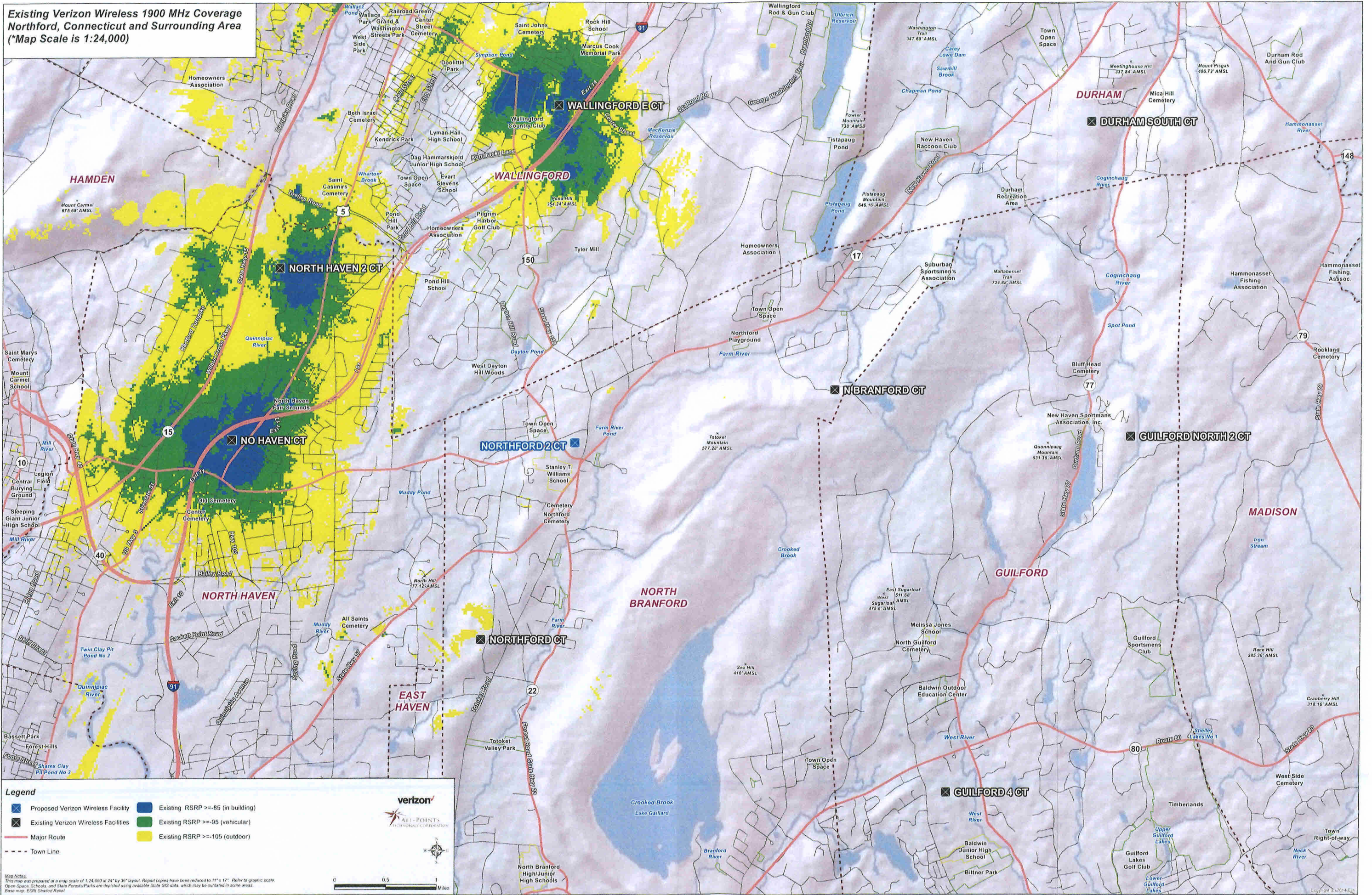
- Proposed Verizon Wireless Facility
- Existing and Proposed RSRP >= -85 (in building)
- Existing Verizon Wireless Facilities
- Existing and Proposed RSRP >= -95 (vehicular)
- Major Route
- Existing and Proposed RSRP >= -105 (outdoor)
- Town Line

**verizon**  
ALL-POINTS  
COVERAGE COOPERATION

Map Notes:  
This map was prepared at a map scale of 1:24,000 at 24" by 36" layout. Report copies have been reduced to 11" x 17". Refer to graphic scale.  
Open Space, Schools, and State Forests/Parks are depicted using available State GIS data which may be outdated in some areas.  
Base map: ESRI Shaded Relief

0 0.5 1 Miles

**Existing Verizon Wireless 1900 MHz Coverage  
Northford, Connecticut and Surrounding Area  
(\*Map Scale is 1:24,000)**



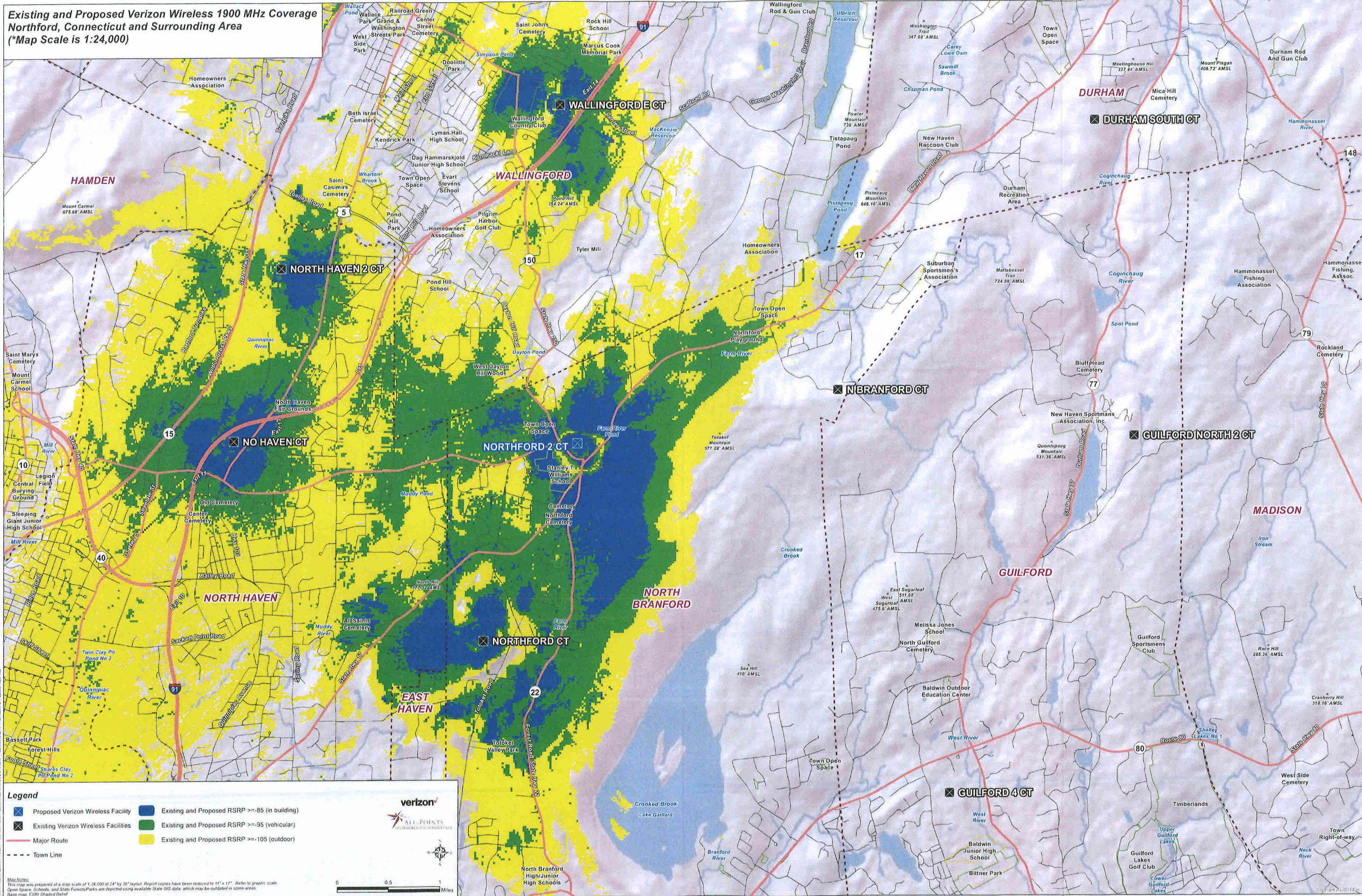
**Legend**

- Proposed Verizon Wireless Facility
- Existing RSRP >= -85 (in building)
- Existing Verizon Wireless Facilities
- Existing RSRP >= -95 (vehicular)
- Major Route
- Existing RSRP >= -105 (outdoor)
- Town Line

**verizon**  
ALL-POINTS  
COVERAGE COORDINATION

Map Notes:  
This map was prepared at a map scale of 1:24,000 at 24" by 36" layout. Report copies have been reduced to 11" x 17". Refer to graphic scale.  
Open Space, Schools, and State Forests/Parks are depicted using available State GIS data, which may be outdated in some areas.  
Base map: ESRI Shaded Relief

**Existing and Proposed Verizon Wireless 1900 MHz Coverage  
Northford, Connecticut and Surrounding Area  
(\*Map Scale is 1:24,000)**



**Legend**

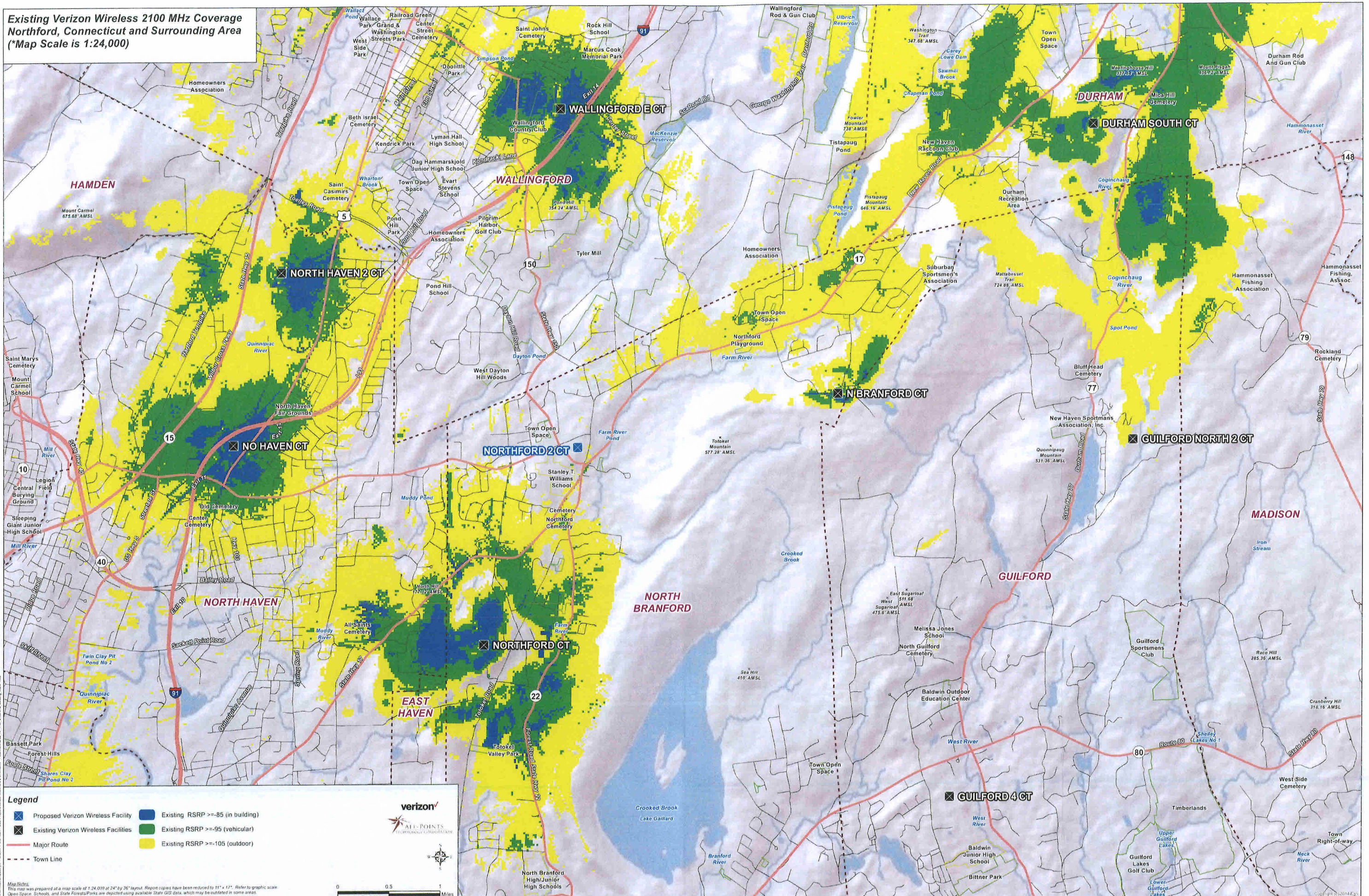
- Proposed Verizon Wireless Facility
- Existing Verizon Wireless Facilities
- Major Route
- - - Town Line
- Existing and Proposed RSRP >= -85 (in building)
- Existing and Proposed RSRP >= -95 (vehicular)
- Existing and Proposed RSRP >= -105 (outdoor)

**Map Notes:**  
This map was prepared at a map scale of 1:24,000 at 24" by 36" layout. Report copies have been reduced to 11" x 17". Refer to graphic scale.  
Open Space, Schools, and State Forests/Parks are depicted using available State GIS data, which may be outdated in some areas.  
Base map: ESRI Shaded Relief

**verizon**  
ALL-POINTS  
TELECOMMUNICATIONS

0 0.5 1 Miles

**Existing Verizon Wireless 2100 MHz Coverage  
Northford, Connecticut and Surrounding Area  
(\*Map Scale is 1:24,000)**



**Legend**

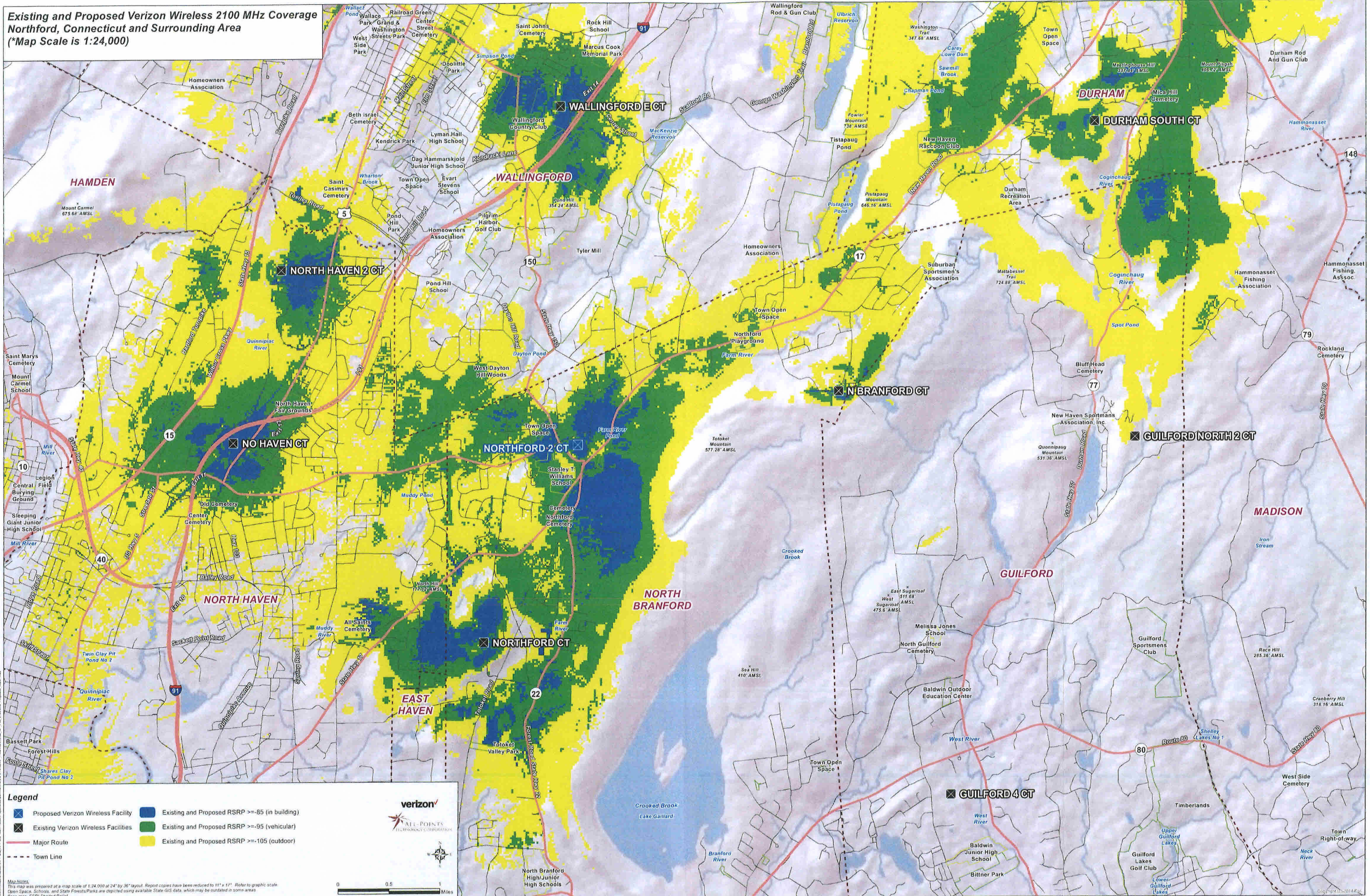
- ✕ Proposed Verizon Wireless Facility
- ✕ Existing Verizon Wireless Facilities
- Major Route
- - - Town Line
- Existing RSRP >= -85 (in building)
- Existing RSRP >= -95 (vehicular)
- Existing RSRP >= -105 (outdoor)

**Map Notes:**  
This map was prepared at a map scale of 1:24,000 at 24" by 36" layout. Report copies have been reduced to 11" x 17". Refer to graphic scale.  
Open Space, Schools, and State Forests/Parks are depicted using available State GIS data, which may be outdated in some areas.  
Base map: ESRI Shaded Relief

**Scale:** 0 0.5 1 Miles

**Logos:** Verizon, All-Points Technology Corporation

**Existing and Proposed Verizon Wireless 2100 MHz Coverage  
Northford, Connecticut and Surrounding Area  
(\*Map Scale is 1:24,000)**



**Legend**

- Proposed Verizon Wireless Facility
- Existing and Proposed RSRP >=-85 (in building)
- Existing and Proposed RSRP >=-95 (vehicular)
- Existing and Proposed RSRP >=-105 (outdoor)
- Major Route
- - - Town Line

**verizon**  
ALL-POINTS  
TELECOMMUNICATIONS CORPORATION

Map Notes:  
This map was prepared at a map scale of 1:24,000 at 24" by 36" layout. Report copies have been reduced to 11" x 17". Refer to graphic scale.  
Open Space, Schools, and State Forests/Parks are depicted using available State GIS data, which may be outdated in some areas.  
Base map: ESRI Shaded Relief

0 0.5 1 Miles