



PRELIMINARY HISTORIC RESOURCES DETERMINATION

October 5, 2020

Verizon Wireless
20 Alexander Drive
Wallingford, Connecticut 06492

Re: Proposed Telecommunications Facility
118 Newton Road
Woodbridge, Connecticut

On behalf of Verizon Wireless, All-Points Technology Corporation, P.C. ("APT") performed an evaluation with respect to the proposed Facility's potential effects on historic resources proximate to the referenced project site.

APT completed an independent review of the National Register of Historic Places ("NRHP") and SHPO files to determine if any listed sites, or sites eligible for listing, are located proximate to the Site. The results of our review revealed that no such resources are located within one-half mile of the site.¹ Further, no state-registered sites are located proximate to the project site. A cultural resource screening map is provided as an attachment to this memorandum.

As part of its obligations for compliance with the National Environmental Policy Act ("NEPA"), Verizon Wireless will be submitting required documentation to the State Historic Preservation Office ("SHPO") for that agency's review and determination. The SHPO submission will be prepared by a qualified architectural historian that meets criteria developed by the Secretary of the Interior. That process has not yet been initiated.

Based on our research, it is APT's opinion that the proposed Facility would have no effect on historic properties listed or eligible for listing on the NRHP.

Sincerely,

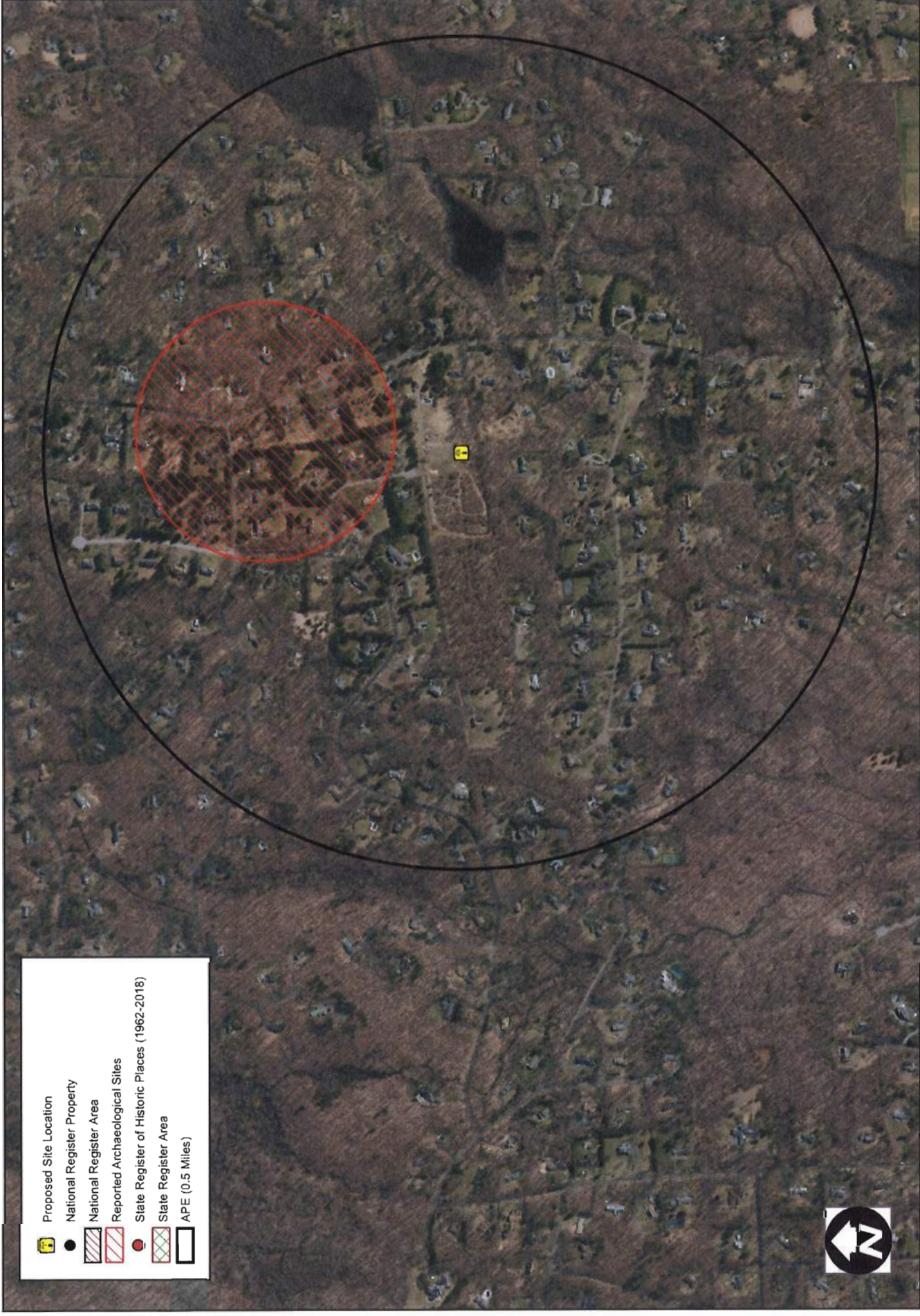
A handwritten signature in black ink that reads "Brian Gaudet".

Brian Gaudet
Project Manager

Attachment

¹ For towers under 200 feet tall, the Area of Potential Effect ("APE") has been established at 0.5 mile. This distance represents the APE established cooperatively by the Federal Communications Commission, Advisory Council on Historic Preservation and the National Conference of State Historic Preservation Officers.

Cultural Resource Screening Map



	Proposed Site Location
	National Register Property
	National Register Area
	Reported Archaeological Sites
	State Register of Historic Places (1962-2018)
	State Register Area
	APE (0.5 Miles)



Cultural Resources Screen
CT1418460 Woodbridge North 2 118 Newton Road, Woodbridge, CT
 September 10, 2020 \ USGS QUAD: