

STATE OF CONNECTICUT
CONNECTICUT SITING COUNCIL

IN RE:

APPLICATION OF NEW CINGULAR WIRELESS PCS, LLC
(AT&T) FOR A CERTIFICATE OF ENVIRONMENTAL
COMPATIBILITY AND PUBLIC NEED FOR THE
CONSTRUCTION, MAINTENANCE, AND OPERATION OF
A TELECOMMUNICATIONS FACILITY AT 106 SHARON
ROAD, TOWN OF SALISBURY, CONNECTICUT

DOCKET NO. 501

June 21, 2021

NEW CINGULAR WIRELESS PCS, LLC d/b/a AT&T
SUPPLEMENTAL SUBMISSION

AT&T (the "Applicant") respectfully submits the following supplemental information to the Connecticut Siting Council in the above-referenced proceeding:

Supplemental Information Regarding Siting Council Interrogatory Response No. 12

The Applicant's response to the Connecticut Siting Council Interrogatory No. 12 is hereby supplemented to include the State of Connecticut Soil Map depicting Prime Farmland Soils in relation to the Proposed Facility, dated June 14, 2021, which is provided herein as Attachment 1. As shown in the attached map, the subject property does not contain any Prime Farmland Soils.

Supplemental Information Regarding Visibility of the Proposed Facility

Included in Attachment 2 is a photographic simulation package depicting photos taken from Wononskopomuc Lake during a balloon test, prepared by Virtual Site Simulations, LLC and dated May 7, 2021. As demonstrated by these simulations, visibility of the Proposed Facility from Wononskopomuc Lake waterway is minimal.

CERTIFICATE OF SERVICE

I hereby certify that on this day an original and fifteen (15) copies of the foregoing were sent via overnight mail and electronically to the Connecticut Siting Council.

June 21, 2021

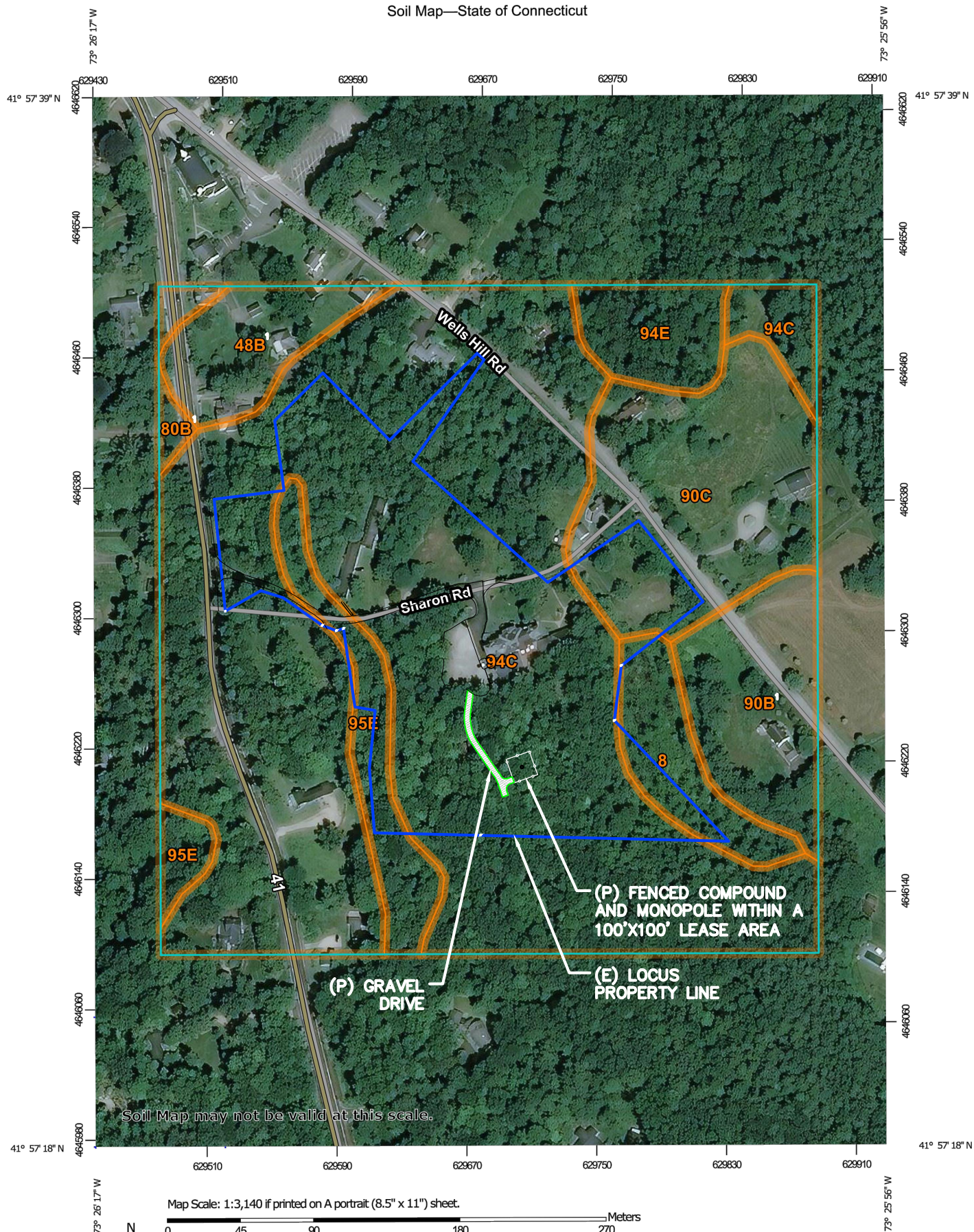
A handwritten signature in blue ink, appearing to read 'Kristen Motel', is written above a horizontal line.

Kristen Motel
Cuddy & Feder LLP
445 Hamilton Ave, 14th Floor
White Plains, NY 10601
(914)-761-1300
Attorneys for the Applicants

cc: Brian Leyden, AT&T
Harry Carey, AT&T
Lucia Chiochio, Esq.

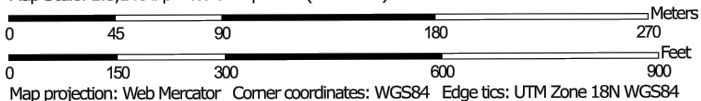
ATTACHMENT 1

Soil Map—State of Connecticut



Soil Map may not be valid at this scale.

Map Scale: 1:3,140 if printed on A portrait (8.5" x 11") sheet.



**Natural Resources
Conservation Service**

Web Soil Survey
National Cooperative Soil Survey

1. PRIME FARMLAND
SOILS 48B, 80B & 90B

6/14/2021
Page 1 of 3

MAP LEGEND

Area of Interest (AOI)

 Area of Interest (AOI)

Soils

 Soil Map Unit Polygons

 Soil Map Unit Lines

 Soil Map Unit Points

Special Point Features



Blowout



Borrow Pit



Clay Spot



Closed Depression



Gravel Pit



Gravelly Spot



Landfill



Lava Flow



Marsh or swamp



Mine or Quarry



Miscellaneous Water



Perennial Water



Rock Outcrop



Saline Spot



Sandy Spot



Severely Eroded Spot



Sinkhole



Slide or Slip



Sodic Spot



Spoil Area



Stony Spot



Very Stony Spot



Wet Spot



Other



Special Line Features

Water Features



Streams and Canals

Transportation



Rails



Interstate Highways



US Routes



Major Roads



Local Roads

Background



Aerial Photography

MAP INFORMATION

The soil surveys that comprise your AOI were mapped at 1:12,000.

Warning: Soil Map may not be valid at this scale.

Enlargement of maps beyond the scale of mapping can cause misunderstanding of the detail of mapping and accuracy of soil line placement. The maps do not show the small areas of contrasting soils that could have been shown at a more detailed scale.

Please rely on the bar scale on each map sheet for map measurements.

Source of Map: Natural Resources Conservation Service

Web Soil Survey URL:

Coordinate System: Web Mercator (EPSG:3857)

Maps from the Web Soil Survey are based on the Web Mercator projection, which preserves direction and shape but distorts distance and area. A projection that preserves area, such as the Albers equal-area conic projection, should be used if more accurate calculations of distance or area are required.

This product is generated from the USDA-NRCS certified data as of the version date(s) listed below.

Soil Survey Area: State of Connecticut

Survey Area Data: Version 20, Jun 9, 2020

Soil map units are labeled (as space allows) for map scales 1:50,000 or larger.

Date(s) aerial images were photographed: Aug 23, 2018—Sep 17, 2019

The orthophoto or other base map on which the soil lines were compiled and digitized probably differs from the background imagery displayed on these maps. As a result, some minor shifting of map unit boundaries may be evident.

Map Unit Legend

Map Unit Symbol	Map Unit Name	Acres in AOI	Percent of AOI
8	Mudgepond and Alden soils, extremely stony	1.5	3.7%
48B	Georgia and Amenia silt loams, 2 to 8 percent slopes	1.6	See Note Below: 4.0%
80B	Bernardston silt loam, 3 to 8 percent slopes	0.4	See Note Below: 0.9%
90B	Stockbridge loam, 3 to 8 percent slopes	2.7	See Note Below: 6.6%
90C	Stockbridge loam, 8 to 15 percent slopes	5.1	12.4%
94C	Farmington-Nellis complex, 3 to 15 percent slopes, very rocky	26.4	64.1%
94E	Farmington-Nellis complex, 15 to 35 percent slopes, very rocky	1.3	3.2%
95E	Farmington-Rock outcrop complex, 15 to 45 percent slopes	2.1	5.1%
Totals for Area of Interest		41.2	100.0%

Note:

Soil types 48B, 80B & 90B are found on adjacent properties and have a Farmland Classification of "All areas are prime farmland". The total area of these soils found on the subject parcel is 0%.

ATTACHMENT 2

Photographic Simulation Package

Proposed Wireless Telecommunications Facility:

CT2246 Salisbury
106 Sharon Road
Lakeville, CT 06039



- Balloon Test Conducted 5/7/2021
- Simulation photos taken from Wononskopomuc Lake
- Proposed new 94 ft AGL antenna structure

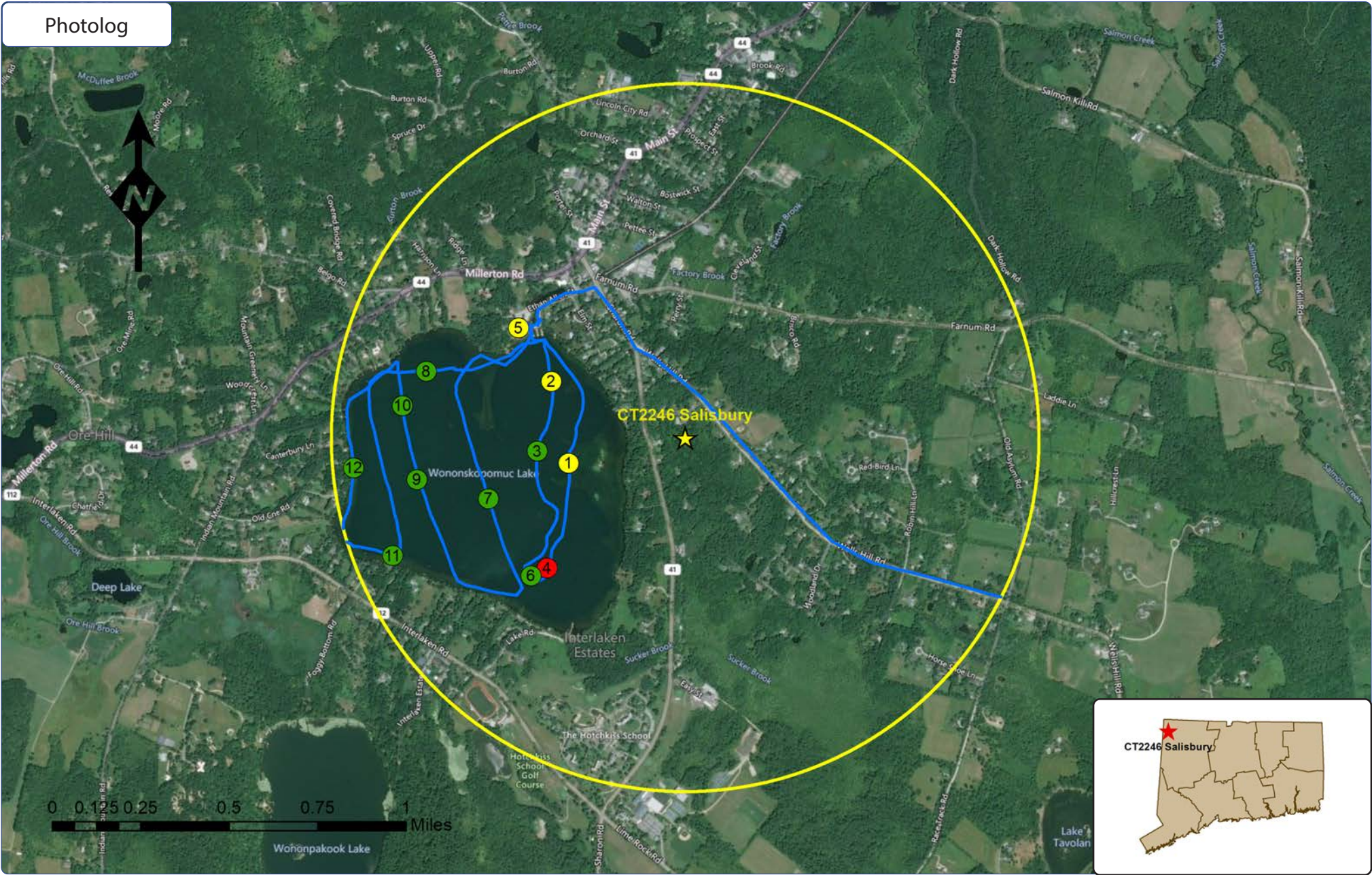
Package prepared by:

Virtual Site Simulations, LLC
24 Salt Pond Road
Suite C3
South Kingstown, Rhode Island 02879

www.VirtualSiteSimulations.com
www.ThinkVSSFirst.com

Photo Simulations are for demonstration purposes only. It should not be used in any other fashion or with any other intent. The accuracy of the resulting data is not guaranteed and is not for redistribution





Wireless Telecommunications Facility:

CT2246 Salisbury
106 Sharon Road
Lakeville, CT 06039

Legend:

- ★ Facility Location
- 1 Mile Radius
- Reconnaissance Track Log
- Photo location - Balloon visible
- Photo location - Balloon NOT visible

Photo Simulations are for demonstration purposes only. It should not be used in any other fashion or with any other intent. The accuracy of the resulting data is not guaranteed and is not for redistribution



Existing



Photo #	Approximate Location	Gps Coordinates		Distance to site	Orientation	Bearing to site	Visibility
1	Sharon Rd	41.95614	-73.44137	0.34 Miles	West	77	Obscured

Site: CT2246 Salisbury

Photo Simulations are for demonstration purposes only. It should not be used in any other fashion or with any other intent. The accuracy of the resulting data is not guaranteed and is not for redistribution





Photo #	Approximate Location	Gps Coordinates		Distance to site	Orientation	Bearing to site	Visibility
1	Sharon Rd	41.95614	-73.44137	0.34 Miles	West	77	Obscured

Site: CT2246 Salisbury

Photo Simulations are for demonstration purposes only. It should not be used in any other fashion or with any other intent. The accuracy of the resulting data is not guaranteed and is not for redistribution



Existing



Photo #	Approximate Location	Gps Coordinates		Distance to site	Orientation	Bearing to site	Visibility
2	Elm St	41.95948	-73.44236	0.41 Miles	North-West	113	Obscured

Site: CT2246 Salisbury

Photo Simulations are for demonstration purposes only. It should not be used in any other fashion or with any other intent. The accuracy of the resulting data is not guaranteed and is not for redistribution





Photo #	Approximate Location	Gps Coordinates		Distance to site	Orientation	Bearing to site	Visibility
2	Elm St	41.95948	-73.44236	0.41 Miles	North-West	113	Obscured

Site: CT2246 Salisbury

Photo Simulations are for demonstration purposes only. It should not be used in any other fashion or with any other intent. The accuracy of the resulting data is not guaranteed and is not for redistribution



Existing



Photo #	Approximate Location	Gps Coordinates		Distance to site	Orientation	Bearing to site	Visibility
3	Sharon Rd	41.95661	-73.44312	0.42 Miles	West	84	Year Round

Site: CT2246 Salisbury

Photo Simulations are for demonstration purposes only. It should not be used in any other fashion or with any other intent. The accuracy of the resulting data is not guaranteed and is not for redistribution





Photo #	Approximate Location	Gps Coordinates		Distance to site	Orientation	Bearing to site	Visibility
3	Sharon Rd	41.95661	-73.44312	0.42 Miles	West	84	Year Round

Site: CT2246 Salisbury

Photo Simulations are for demonstration purposes only. It should not be used in any other fashion or with any other intent. The accuracy of the resulting data is not guaranteed and is not for redistribution



Existing

Balloon not visible from this location



Photo #	Approximate Location	Gps Coordinates		Distance to site	Orientation	Bearing to site	Visibility
4	Interlaken Rd	41.95183	-73.44252	0.54 Miles	South-West	46	Not Visible

Site: CT2246 Salisbury

Photo Simulations are for demonstration purposes only. It should not be used in any other fashion or with any other intent. The accuracy of the resulting data is not guaranteed and is not for redistribution



Existing



Photo #	Approximate Location	Gps Coordinates		Distance to site	Orientation	Bearing to site	Visibility
5	Ethan Allen St	41.96165	-73.44419	0.56 Miles	North-West	123	Obscured

Site: CT2246 Salisbury

Photo Simulations are for demonstration purposes only. It should not be used in any other fashion or with any other intent. The accuracy of the resulting data is not guaranteed and is not for redistribution





Photo #	Approximate Location	Gps Coordinates		Distance to site	Orientation	Bearing to site	Visibility
5	Ethan Allen St	41.96165	-73.44419	0.56 Miles	North-West	123	Obscured

Site: CT2246 Salisbury

Photo Simulations are for demonstration purposes only. It should not be used in any other fashion or with any other intent. The accuracy of the resulting data is not guaranteed and is not for redistribution



Existing



Photo #	Approximate Location	Gps Coordinates		Distance to site	Orientation	Bearing to site	Visibility
6	Lake Rd	41.95466	-73.44576	0.58 Miles	West	72	Year Round

Site: CT2246 Salisbury

Photo Simulations are for demonstration purposes only. It should not be used in any other fashion or with any other intent. The accuracy of the resulting data is not guaranteed and is not for redistribution





Photo #	Approximate Location	Gps Coordinates		Distance to site	Orientation	Bearing to site	Visibility
6	Lake Rd	41.95466	-73.44576	0.58 Miles	West	72	Year Round

Site: CT2246 Salisbury

Photo Simulations are for demonstration purposes only. It should not be used in any other fashion or with any other intent. The accuracy of the resulting data is not guaranteed and is not for redistribution



Existing



Photo #	Approximate Location	Gps Coordinates		Distance to site	Orientation	Bearing to site	Visibility
7	Interlaken Rd	41.95152	-73.44339	0.58 Miles	South-West	48	Year Round

Site: CT2246 Salisbury

Photo Simulations are for demonstration purposes only. It should not be used in any other fashion or with any other intent. The accuracy of the resulting data is not guaranteed and is not for redistribution





Photo #	Approximate Location	Gps Coordinates		Distance to site	Orientation	Bearing to site	Visibility
7	Interlaken Rd	41.95152	-73.44339	0.58 Miles	South-West	48	Year Round

Site: CT2246 Salisbury

Photo Simulations are for demonstration purposes only. It should not be used in any other fashion or with any other intent. The accuracy of the resulting data is not guaranteed and is not for redistribution



Existing



Photo #	Approximate Location	Gps Coordinates		Distance to site	Orientation	Bearing to site	Visibility
8	Millerton Rd	41.95984	-73.44923	0.75 Miles	West	104	Year Round

Site: CT2246 Salisbury

Photo Simulations are for demonstration purposes only. It should not be used in any other fashion or with any other intent. The accuracy of the resulting data is not guaranteed and is not for redistribution





Photo #	Approximate Location	Gps Coordinates		Distance to site	Orientation	Bearing to site	Visibility
8	Millerton Rd	41.95984	-73.44923	0.75 Miles	West	104	Year Round

Site: CT2246 Salisbury

Photo Simulations are for demonstration purposes only. It should not be used in any other fashion or with any other intent. The accuracy of the resulting data is not guaranteed and is not for redistribution



Existing



Photo #	Approximate Location	Gps Coordinates		Distance to site	Orientation	Bearing to site	Visibility
9	1 Rd	41.95542	-73.4497	0.77 Miles	West	81	Year Round

Site: CT2246 Salisbury

Photo Simulations are for demonstration purposes only. It should not be used in any other fashion or with any other intent. The accuracy of the resulting data is not guaranteed and is not for redistribution





Photo #	Approximate Location	Gps Coordinates		Distance to site	Orientation	Bearing to site	Visibility
9	1 Rd	41.95542	-73.4497	0.77 Miles	West	81	Year Round

Site: CT2246 Salisbury

Photo Simulations are for demonstration purposes only. It should not be used in any other fashion or with any other intent. The accuracy of the resulting data is not guaranteed and is not for redistribution



Existing



Photo #	Approximate Location	Gps Coordinates		Distance to site	Orientation	Bearing to site	Visibility
10	Millerton Rd	41.95844	-73.45053	0.8 Miles	West	96	Year Round

Site: CT2246 Salisbury

Photo Simulations are for demonstration purposes only. It should not be used in any other fashion or with any other intent. The accuracy of the resulting data is not guaranteed and is not for redistribution





Photo #	Approximate Location	Gps Coordinates		Distance to site	Orientation	Bearing to site	Visibility
10	Millerton Rd	41.95844	-73.45053	0.8 Miles	West	96	Year Round

Site: CT2246 Salisbury

Photo Simulations are for demonstration purposes only. It should not be used in any other fashion or with any other intent. The accuracy of the resulting data is not guaranteed and is not for redistribution



Existing



Photo #	Approximate Location	Gps Coordinates		Distance to site	Orientation	Bearing to site	Visibility
11	Interlaken Rd	41.95229	-73.45099	0.89 Miles	West	68	Year Round

Site: CT2246 Salisbury

Photo Simulations are for demonstration purposes only. It should not be used in any other fashion or with any other intent. The accuracy of the resulting data is not guaranteed and is not for redistribution





Photo #	Approximate Location	Gps Coordinates		Distance to site	Orientation	Bearing to site	Visibility
11	Interlaken Rd	41.95229	-73.45099	0.89 Miles	West	68	Year Round

Site: CT2246 Salisbury

Photo Simulations are for demonstration purposes only. It should not be used in any other fashion or with any other intent. The accuracy of the resulting data is not guaranteed and is not for redistribution



Existing



Photo #	Approximate Location	Gps Coordinates		Distance to site	Orientation	Bearing to site	Visibility
12	Old Cne Rd	41.95587	-73.45318	0.94 Miles	West	84	Year Round

Site: CT2246 Salisbury

Photo Simulations are for demonstration purposes only. It should not be used in any other fashion or with any other intent. The accuracy of the resulting data is not guaranteed and is not for redistribution





Photo #	Approximate Location	Gps Coordinates		Distance to site	Orientation	Bearing to site	Visibility
12	Old Cne Rd	41.95587	-73.45318	0.94 Miles	West	84	Year Round

Site: CT2246 Salisbury

Photo Simulations are for demonstration purposes only. It should not be used in any other fashion or with any other intent. The accuracy of the resulting data is not guaranteed and is not for redistribution

