

Connecticut nursing homes are [required by the Centers for Medicare and Medicaid Services \(CMS\)](#) to report on the impact of COVID-19 on their residents and staff through CDC’s National Healthcare Safety Network (NHSN). This reporting is intended to reflect recent COVID-19 activity in nursing homes. Data reported here are from NHSN and reflects facility-specific COVID-19 case data in the past 2 weeks. All nursing homes follow NHSN definitions and instructions when reporting to the NHSN COVID-19 module, ensuring data are reported in a systematic way. Detailed information about COVID-19 reporting for nursing homes and NHSN can be found [here](#).

On May 11, 2021, CMS outlined [additional reporting requirements](#) for nursing homes, including COVID-19 vaccine coverage data among residents and staff. For more facility specific COVID-19 data, including vaccination rates, please see [CMS’ COVID-19 Nursing Home Data website](#).

Note that the data reported are current for the week of reporting. CT DPH continuously updates and corrects reporting errors.

Table 1: COVID-19 Resident and Staff Impact in CT Nursing Homes, November 10, 2021–November 23, 2021

Town	Nursing Home	Current Census	Resident		Staff	
			# Confirmed cases	# COVID-related deaths ¹	# Confirmed cases ²	# COVID-related deaths ²
Avon	Apple Rehab Avon	35	0	0	0	0
Avon	Avon Health Center	102	0	0	0	0
Berlin	Ledgecrest Health Care Center	47	0	0	1	0
Bethel	Bethel Health Care Center	113	0	0	0	0
Bloomfield	Bloomfield Health Care Center	89	0	0	2	0
Bloomfield	Caleb Hitchcock Health Center	57	0	0	0	0
Bloomfield	Seabury Health Center	59	0	0	0	0
Bloomfield	Touchpoints at Bloomfield	115	0	0	0	0
Branford	Branford Hills Health Care Center	138	0	0	0	0
Bridgeport	Jewish Senior Services	282	0	0	0	0
Bridgeport	Northbridge Health Care	134	0	0	0	0
Bridgeport	The Springs at Watermark 3030 Park	20	0	0	0	0
Bristol	Countryside Manor of Bristol	80	0	0	0	0
Bristol	Ingraham Manor	122	0	0	0	0
Bristol	Sheriden Woods Health Care Center	130	0	0	0	0
Bristol	The Pines at Bristol	116	0	0	0	0
Bristol	Village Green of Bristol Rehabilitation and Health Center	81	0	0	0	0
Brooklyn	Pierce Memorial Baptist Home	53	0	0	1	0
Canaan	Geer Nursing and Rehabilitation Center [‡]					
Canton	Cherrybrook Healthcare Center	84	0	0	1	0
Cheshire	Cheshire Regional Rehabilitation Center	72	11	0	7	0
Cheshire	Elim Park Baptist Home	74	0	0	1	0

Chester	Aaron Manor Nursing & Rehabilitation	54	0	0	2	0
Chester	Chesterfield's Health Care Center	37	0	0	0	0
Colchester	Apple Rehab Colchester	53	0	0	0	0
Colchester	Harrington Court	103	0	0	0	0
Cromwell	Apple Rehab Cromwell	68	0	0	0	0
Cromwell	Autumn Lake Healthcare At Cromwell	131	0	0	0	0
Cromwell	Pilgrim Manor Care Center	57	0	0	0	0
Danbury	Filosa Nursing & Rehabilitation	51	0	0	0	0
Danbury	Glen Hill Center	92	0	0	0	0
Danbury	Hancock Hall [¥]	76	0	0	1	0
Danbury	Saint John Paul II Center	108	0	0	0	0
Danbury	Western Rehabilitation Care Center	83	3	0	0	0
Durham	Twin Maples Health Care Facility	35	0	0	0	0
East Haddam	Chestelm Health & Rehabilitation Center	71	0	0	0	0
East Hampton	Cobalt Health Care & Rehabilitation Center	28	0	0	0	0
East Hartford	Riverside Health and Rehabilitation Center	281	0	0	0	0
East Haven	Apple Rehab Laurel Woods	101	0	0	0	0
East Haven	Whispering Pines Rehabilitation and Nursing Center LLC	79	0	0	0	0
East Lyme	Bride Brook Health & Rehabilitation Center	106	0	0	0	0
East Windsor	Fresh River Healthcare	115	0	0	0	0
East Windsor	Touchpoints at Chestnut	42	0	0	0	0
Enfield	Parkway Pavillion	115	0	0	0	0
Enfield	St. Joseph Residence	25	0	0	0	0
Essex	Essex Meadows Health Center	35	0	0	0	0
Fairfield	Cambridge Health & Rehabilitation Center	126	0	0	0	0
Fairfield	Carolton Chronic & Convalescent Hospital [¥]	105	1	0	0	0
Fairfield	Ludlowe Center for Health and Rehabilitation	133	0	0	0	0
Farmington	Amberwoods of Farmington	94	0	0	0	0
Farmington	Touchpoints at Farmington	89	0	0	0	0
Glastonbury	Glastonbury Health Care Center	84	0	0	0	0
Glastonbury	Salmonbrook Rehab & Nursing	113	0	0	0	0
Granby	Meadowbrook of Granby	77	0	0	1	0
Greenwich	Greenwich Woods	74	0	0	0	0
Greenwich	RegalCare at Greenwich [¥]					

Greenwich	The Nathaniel Witherell	181	0	0	0	0
Groton	Fairview	92	0	0	0	0
Groton	Groton Regency Center	118	1	0	0	0
Groton	Mystic Healthcare & Rehabilitation Center	84	0	0	0	0
Guilford	Apple Rehab Guilford	77	0	0	0	0
Guilford	The Guilford House	67	1	0	2	0
Hamden	Arden House	198	0	0	0	0
Hamden	Hamden Rehabilitation & Health Care Center	101	0	0	0	0
Hamden	Whitney Center	33	0	0	0	0
Hamden	Whitney Rehabilitation Care Center	132	0	0	0	0
Hartford	Avery Heights Health Care Center	156	0	0	0	0
Hartford	Chelsea Place	201	0	0	0	0
Hartford	Parkville Care Center	111	0	0	0	0
Hartford	Trinity Hill Care Center	116	0	0	0	0
Killingly	Davis Place	116	0	0	0	0
Killingly	Westview Nursing Care & Rehabilitation Center, Inc.	95	0	0	1	0
Madison	Madison House Center	74	0	0	0	0
Manchester	Crestfield rehabilitation Center and Fenwood Manor	102	1	1	0	0
Manchester	Manchester Manor Health Care Center	106	0	0	0	0
Manchester	Touchpoints at Manchester	119	0	0	0	0
Manchester	Westside Care Center	121	0	0	0	0
Mansfield	Mansfield Center for Nursing & Rehabilitation	49	0	0	0	0
Marlborough	Marlborough Health & Rehabilitation Center	101	0	0	1	0
Meriden	Apple Rehab Cocomo	72	3	0	1	0
Meriden	CT Baptist Homes, Inc.	50	0	0	0	0
Meriden	Meriden Center (CT)	91	0	0	1	0
Meriden	Miller Memorial Community	63	1	0	0	0
Meriden	Silver Springs Care Center	142	0	0	1	0
Meriden	The Bradley Home	26	0	0	0	0
Meriden	The Curtis Home	52	0	0	0	0
Middlebury	Middlebury Convalescent Home, Inc	43	0	0	0	0
Middletown	Apple Rehab Middletown	49	0	0	0	0
Middletown	Middlesex Healthcare Center	116	0	0	0	0
Middletown	Wadsworth Glen Health Care Center	92	0	0	0	0

Middletown	Water's Edge Center for Health and Rehabilitation	128	6	0	2	0
Milford	Golden Hill Rehab Pavilion	89	0	0	0	0
Milford	Milford Health Care Center	114	0	0	0	0
Milford	West River Rehabilitation Center	100	0	0	2	0
Montville	Apple Rehab Uncasville	82	0	0	1	0
Naugatuck	Beacon Brook Health Center	119	0	0	0	0
Naugatuck	Glendale Center	113	0	0	0	0
New Britain	Autumn Lake Healthcare At New Britain	245	0	0	0	0
New Britain	Grandview Rehabilitation	135	0	0	0	0
New Britain	Jerome Home	84	0	0	1	0
New Britain	Monsignor Bojnowski Manor [¥]	48	0	0	0	0
New Canaan	Waveny Care Center	55	0	0	0	0
New Haven	Advanced Center For Nursing & Rehabilitation	208	1	0	0	0
New Haven	Grimes Health Center	63	0	0	0	0
New Haven	Leeway	29	0	0	0	0
New Haven	New Haven Center for Nursing and Rehabilitation [¥]	136	0	0	0	0
New Haven	The Mary Wade Home, Inc.	85	0	0	0	0
New London	Beechwood Post-Acute and Transitional Care	47	2	0	2	0
New London	Harbor Village [¥]	116	0	0	0	0
New Milford	Candlewood Valley Health & Rehabilitation Center	105	36	5	8	0
New Milford	Village Crest Center for Health and Rehabilitation	80	1	0	1	0
Newington	Bel-Air Manor Nursing and Rehabilitation Center [¥]	60	0	0	0	0
Newington	Jefferson House	94	3	0	2	0
Newington	Newington Rapid Recovery Rehab Center	134	0	0	0	0
Newtown	Newtown Rehabilitation & Health Care Center	120	0	0	1	0
North Branford	Evergreen Woods Health Center	21	0	0	1	0
North Haven	Montowese Health & Rehabilitation Center	100	1	0	0	0
Norwalk	Autumn Lake Healthcare at Norwalk	113	0	0	0	0
Norwalk	Cassena Care at Norwalk	108	5	0	2	0
Norwalk	Notre Dame Health and Rehabilitation [¥]	39	0	0	0	0
Norwich	Norwich Sub-Acute and Nursing	84	0	0	0	0
Old Saybrook	Apple Rehab Saybrook	58	0	0	0	0
Old Saybrook	Gladeview Rehabilitation and Health Care	87	2	1	0	0
Orange	Orange Health Care Center	50	0	0	0	0

Plainfield	Colonial Health and Rehab Center of Plainfield, LLC	87	0	0	2	0
Plainfield	Villa Maria Nursing and Rehabilitation Community, Inc. †					
Plainville	Apple Rehab Farmington Valley	97	0	0	1	0
Plymouth	Cook-Willow Health & Rehabilitation Center	52	0	0	0	0
Portland	Portland Care & Rehabilitation Centre	61	0	0	0	0
Putnam	Matulaitis	85	0	0	0	0
Redding	Ridge Crest at Meadow Ridge †	53	0	0	0	0
Ridgefield	Laurel Ridge Health Care Center	109	0	0	0	0
Rocky Hill	60 West	78	0	0	0	0
Rocky Hill	Apple Rehab Rocky Hill	56	0	0	0	0
Rocky Hill	Maple View Health and Rehabilitation Center	93	0	0	0	0
Rocky Hill	The John L. Levitow Health Care Center	78	0	0	0	0
Salisbury	Noble Horizons	66	0	0	0	0
Seymour	Shady Knoll Health Center	116	0	0	0	0
Sharon	Sharon Health Care Center	68	0	0	0	0
Shelton	Apple Rehab Shelton Lakes	94	0	0	0	0
Shelton	Bishop-Wicke Health and Rehabilitation	89	0	0	0	0
Shelton	Gardner Heights Health Care Center	96	8	0	0	0
Shelton	Hewitt Health & Rehabilitation Center	88	0	0	0	0
Simsbury	Governor's House	56	6	0	0	0
Simsbury	McLean Health Care	67	0	0	0	0
Southbury	Pomperaug Woods Health Center	23	0	0	0	0
Southbury	River Glen Health Care Center	97	0	0	0	0
Southbury	The Lutheran Home of Southbury	105	0	0	1	0
Southbury	The Watermark at East Hill	25	0	0	0	0
Southington	LiveWell †	116	0	0	1	0
Southington	Southington Care Center	117	2	0	1	0
Southington	The Summit at Plantsville	143	16	3	2	0
Southport	Southport Center for Nursing and Rehabilitation	105	0	0	0	0
Stafford	Evergreen Health Care	153	0	0	0	0
Stamford	Cassena Care at Stamford	113	3	0	0	0
Stamford	Edgehill Health Center	35	0	0	0	0
Stamford	Long Ridge Post-Acute Care	80	0	0	0	0
Stamford	St. Camillus Center	97	0	0	0	0

Stamford	The Villa at Stamford	119	0	0	0	0
Stonington	Apple Rehab Mystic	44	0	0	1	0
Stonington	Avalon Health Center	36	0	0	0	0
Stonington	Pendleton Health & Rehabilitation Center [¥]	81	0	0	0	0
Stratford	Chamberlain Healthcare (Manor- LTAC)	51	0	0	0	0
Stratford	Lord Chamberlain Nursing & Rehabilitation Center	179	0	0	0	0
Suffield	The Suffield House	126	0	0	0	0
Tolland	Woodlake at Tolland [¥]	109	1	0	0	0
Torrington	Litchfield Woods Health Care Center	141	0	0	1	0
Torrington	Torrington Center for Nursing and Rehabilitation	72	1	0	0	0
Torrington	Valerie Manor Health Care Center	149	6	1	0	0
Torrington	Wolcott Hall Nursing Center	45	0	0	3	0
Trumbull	Maefair Health Care Center	125	0	0	0	0
Trumbull	St Joseph's Center	167	0	0	0	0
Vernon	Fox Hill Center	100	0	0	0	0
Vernon	Vernon Manor Health Care Center [¥]	95	0	0	1	0
Wallingford	Masonicare Health Center-LTC	238	0	0	2	0
Wallingford	Quinnipiac Valley Center	112	0	0	0	0
Wallingford	Regency House of Wallingford	128	0	0	0	0
Wallingford	Skyview Rehab and Nursing	79	0	0	0	0
Waterbury	Abbott Terrace Health Center	185	0	0	0	0
Waterbury	Autumn Lake Healthcare At Bucks Hill	86	0	0	0	0
Waterbury	Cheshire House	64	1	0	0	0
Waterbury	Grove Manor Nursing Home, Inc. [¥]					
Waterbury	Mattatuck Health Care Facility	37	0	0	0	0
Waterbury	Waterbury Center for Nursing and Rehabilitation	115	0	0	0	0
Waterbury	Waterbury Gardens Nursing and Rehab	83	0	0	0	0
Waterford	Bayview Health Care	113	0	0	1	0
Waterford	Greentree Manor Nursing & Rehabilitation Center	65	0	1	0	0
Waterford	New London Rehab & Care	89	0	0	1	0
Watertown	Apple Rehab Watertown	91	0	0	0	0
Watertown	Watertown Convalesium	0	0	0	0	0
West Hartford	Hebrew Center Health and Rehabilitation	203	2	0	0	0
West Hartford	Hughes Health & Rehabilitation	101	0	0	0	0

West Hartford	St. Mary Home	144	0	0	0	0
West Hartford	The Reservoir Center	54	0	0	0	0
West Hartford	West Hartford Health & Rehabilitation Center	128	0	0	0	0
West Haven	Apple Rehab West Haven	72	0	0	0	0
West Haven	West Haven Center for Nursing and Rehabilitation	85	0	0	0	0
Westport	Westport Rehabilitation Complex	40	0	0	0	0
Wilton	Wilton Meadows Rehab & Health Care Center	113	0	0	0	0
Windham	Douglas Manor	82	0	0	0	0
Windham	Saint Joseph Living Center	88	0	0	0	0
Windham	Vanderman Place	77	0	0	1	0
Windsor	Kimberly Hall North	126	0	0	0	0
Windsor	Kimberly Hall South	85	0	0	1	0
Windsor	Windsor Health and Rehab	87	0	0	0	0
Windsor Locks	Bickford Health Care Center [‡]	29	0	0	0	0
Wolcott	Wolcott View Manor	0	0	0	0	0
Woodbridge	The Willows	78	0	0	0	0
Total		18,953	125	12	67	0

¹COVID-19-related resident deaths are defined by NHSN as residents who died from SARS-CoV-2 (COVID-19) related complications and includes resident deaths in the facility and in other locations, such as an acute care facility, in which the resident with COVID-19 was transferred to receive treatment. NHSN reporting instructions for nursing homes can be found [here](#).

²Duplication of total count of staff with COVID and/or COVID-related deaths may occur as staff work at multiple facilities during the week. NHSN methodology requires that positive staff to be included in the facility count, if the positive staff worked on location during the infectious period where a transmission risk could have occurred to residents and other staff. Please see [here](#) for more details.

[‡]Facility did not report for the full reporting period (numbers provided) or for the entire reporting period (blank).

CT DPH began reporting NHSN staff data on June 17, 2020 to align with CMS' requirement for weekly reporting to NHSN. Resident data reporting switched to NHSN as a data source starting July 22, 2020 after a period of data validation with the prior resident case data, which was compiled from data reporting directly from nursing homes to DPH. Due to differing data collection and processing methods between NHSN and the data sources used previously, DPH does not add the data before and after a change in data source due to the possibility of duplication of cases and deaths among prior and current data sources. To view prior nursing home reports, please see [Nursing Home and Assisted Living Facilities Data](#).

Table 2: Cumulative COVID-19 Resident and Staff Impact in CT Nursing Homes – as of November 23, 2021

Town	Nursing Home	Nursing Home Residents				Nursing Home Staff	
		Data reported to CT DPH through July 21, 2020		NHSN Data July 22, 2020–November 23, 2021		NHSN Data since June 17, 2020	
		# Confirmed cases	# COVID-related deaths ¹	# Confirmed cases	# COVID-related deaths ²	# Confirmed cases ³	# COVID-related deaths ³
Avon	Apple Rehab Avon	34	15	0	0	10	0
Avon	Avon Health Center	51	10	47	20	60	0
Berlin	Ledgecrest Health Care Center	32	6	7	0	11	0
Bethel	Bethel Health Care Center	60	17	55	8	34	0
Bloomfield	Bloomfield Health Care Center	47	23	1	0	11	0
Bloomfield	Caleb Hitchcock Health Center	4	2	1	3	23	0
Bloomfield	Seabury Health Center	34	12	17	2	28	0
Bloomfield	Touchpoints at Bloomfield	71	22	3	2	12	0
Branford	Branford Hills Health Care Center	103	25	1	1	17	0
Bridgeport	Jewish Senior Services	88	26	38	11	74	1
Bridgeport	Northbridge Health Care	36	16	18	6	41	0
Bridgeport	The Springs at Watermark 3030 Park	11	3	4	3	6	0
Bristol	Countryside Manor of Bristol	71	26	18	12	20	0
Bristol	Ingraham Manor	7	1	93	7	58	0
Bristol	Sheriden Woods Health Care Center	81	31	37	12	27	0
Bristol	The Pines at Bristol	37	4	32	7	32	0
Bristol	Village Green of Bristol Rehabilitation and Health Center	1	0	5	0	15	0
Brooklyn	Pierce Memorial Baptist Home	0	0	2	2	15	0
Canaan	Geer Nursing and Rehabilitation Center	2	0	67	8	33	0
Canton	Cherrybrook Healthcare Center	55	24	22	2	12	0
Cheshire	Cheshire Regional Rehabilitation Center	2	0	71	5	33	0

Cheshire	Elim Park Baptist Home	41	14		14	0		27	0
Chester	Aaron Manor Nursing & Rehabilitation	33	12		18	2		14	0
Chester	Chesterfield's Health Care Center	0	1		13	0		13	0
Colchester	Apple Rehab Colchester	1	0		60	16		33	0
Colchester	Harrington Court	0	0		59	17		29	0
Cromwell	Apple Rehab Cromwell	30	9		25	1		27	0
Cromwell	Autumn Lake Healthcare At Cromwell	78	22		22	2		21	0
Cromwell	Pilgrim Manor Care Center	1	0		13	1		17	0
Danbury	Filosa Nursing & Rehabilitation	2	0		10	0		19	0
Danbury	Glen Hill Center	35	8		14	0		14	0
Danbury	Hancock Hall	1	1		43	9		49	0
Danbury	Saint John Paul II Center	99	37		15	5		17	0
Danbury	Western Rehabilitation Care Center	55	23		4	0		15	0
Durham	Twin Maples Health Care Facility	1	0		37	1		25	0
East Haddam	Chestelm Health & Rehabilitation Center	1	0		27	9		23	0
East Hampton	Cobalt Health Care & Rehabilitation Center	0	0		31	10		14	0
East Hartford	Riverside Health and Rehabilitation Center	152	60		16	20		27	0
East Haven	Apple Rehab Laurel Woods	22	6		48	8		30	0
East Haven	Whispering Pines Rehabilitation and Nursing Center LLC	59	26		5	0		16	0
East Lyme	Bride Brook Health & Rehabilitation Center	101	30		32	0		14	0
East Windsor	Fresh River Healthcare	99	28		3	0		11	0
East Windsor	Touchpoints at Chestnut	0	0		34	4		15	1
Enfield	Parkway Pavillion	101	20		6	1		18	0
Enfield	St. Joseph Residence	0	0		0	0		14	0
Essex	Essex Meadows Health Center	18	8		2	0		8	0
Fairfield	Cambridge Health & Rehabilitation Center	59	36		25	3		17	0
Fairfield	Carolton Chronic & Convalescent Hospital	82	37		11	0		25	0
Fairfield	Ludlowe Center for Health and Rehabilitation	65	38		61	11		26	0
Farmington	Amberwoods of Farmington	1	1		2	0		24	0
Farmington	Touchpoints at Farmington	83	20		5	0		2	0
Glastonbury	Glastonbury Health Care Center	51	32		27	5		11	0
Glastonbury	Salmonbrook Rehab & Nursing	46	17		35	3		28	1
Granby	Meadowbrook of Granby	2	0		68	20		68	0

Greenwich	Greenwich Woods	38	15		9	4		18	0
Greenwich	RegalCare at Greenwich	5	2		56	19		33	0
Greenwich	The Nathaniel Witherell	60	12		22	5		38	0
Groton	Fairview	0	0		66	7		32	0
Groton	Groton Regency Center	9	0		66	9		35	0
Groton	Mystic Healthcare & Rehabilitation Center	54	21		1	0		13	0
Guilford	Apple Rehab Guilford	29	9		44	12		24	0
Guilford	The Guilford House	1	0		53	6		54	0
Hamden	Arden House	177	53		4	0		18	1
Hamden	Hamden Rehabilitation & Health Care Center	68	23		8	5		21	0
Hamden	Whitney Center	0	0		21	6		23	0
Hamden	Whitney Rehabilitation Care Center	77	20		0	1		19	0
Hartford	Avery Heights Health Care Center	54	11		64	12		58	0
Hartford	Chelsea Place	88	34		2	0		8	0
Hartford	Parkville Care Center	73	11		4	0		7	0
Hartford	Trinity Hill Care Center	77	11		10	0		20	0
Killingly	Davis Place	0	0		147	21		107	0
Killingly	Westview Nursing Care & Rehabilitation Center, Inc.	0	0		89	16		48	0
Madison	Madison House Center	47	18		12	1		18	0
Madison	Watrous Nursing Center****	1	0		14	5		13	0
Manchester	Crestfield rehabilitation Center and Fenwood Manor	54	17		36	12		40	0
Manchester	Manchester Manor Health Care Center	53	23		34	3		51	0
Manchester	Touchpoints at Manchester	68	20		3	0		8	0
Manchester	Westside Care Center	108	27		10	0		13	0
Mansfield	Mansfield Center for Nursing & Rehabilitation	2	0		60	14		31	0
Marlborough	Marlborough Health & Rehabilitation Center	77	18		19	6		35	0
Meriden	Apple Rehab Cocomo	46	18		15	1		20	0
Meriden	CT Baptist Homes, Inc.	13	1		1	7		20	0
Meriden	Meriden Center (CT)	14	0		28	3		16	0
Meriden	Miller Memorial Community	0	0		4	0		32	0
Meriden	Silver Springs Care Center	120	20		14	0		21	0
Meriden	The Bradley Home	0	0		5	7		19	0
Meriden	The Curtis Home	26	10		2	3		12	0
Middlebury	Middlebury Convalescent Home, Inc	0	0		38	10		28	0

Middletown	Apple Rehab Middletown	30	9		18	2		15	0
Middletown	Middlesex Healthcare Center	59	27		0	6		10	0
Middletown	Wadsworth Glen Health Care Center	8	2		82	14		53	0
Middletown	Water's Edge Center for Health and Rehabilitation	88	25		25	5		27	0
Milford	Golden Hill Rehab Pavilion	82	24		21	2		21	0
Milford	Milford Health Care Center	85	30		29	1		34	0
Milford	West River Rehabilitation Center	56	20		49	13		50	0
Montville	Apple Rehab Uncasville	0	0		110	24		48	0
Naugatuck	Beacon Brook Health Center	108	27		30	9		44	0
Naugatuck	Glendale Center	39	7		23	1		15	0
New Britain	Autumn Lake Healthcare At New Britain	111	26		75	13		73	0
New Britain	Cassena Care at New Britain**	71	19		1	0		2	0
New Britain	Grandview Rehabilitation	62	23		33	4		23	0
New Britain	Jerome Home	8	0		30	12		60	0
New Britain	Monsignor Bojnowski Manor	0	0		0	0		11	0
New Canaan	Waveny Care Center	44	17		9	1		18	0
New Haven	Advanced Center For Nursing & Rehabilitation	106	14		16	0		39	0
New Haven	Grimes Health Center	57	3		2	0		13	0
New Haven	Leeway	0	0		0	0		11	0
New Haven	New Haven Center for Nursing and Rehabilitation	51	7		27	1		40	0
New Haven	The Mary Wade Home, Inc.	61	29		7	0		22	0
New London	Beechwood Post-Acute and Transitional Care	3	0		3	0		9	0
New London	Harbor Village	10	1		70	5		30	0
New Milford	Candlewood Valley Health & Rehabilitation Center	2	2		49	5		31	0
New Milford	Village Crest Center for Health and Rehabilitation	62	15		2	0		12	0
Newington	Bel-Air Manor Nursing and Rehabilitation Center	2	3		26	4		28	0
Newington	Jefferson House	30	10		58	17		60	0
Newington	Newington Rapid Recovery Rehab Center	89	26		42	7		17	0
Newtown	Newtown Rehabilitation & Health Care Center	90	28		52	12		49	0
North Branford	Evergreen Woods Health Center	0	0		29	10		33	0
North Haven	Montowese Health & Rehabilitation Center	85	25		47	14		47	0
Norwalk	Autumn Lake Healthcare at Norwalk	62	28		16	3		20	0
Norwalk	Cassena Care at Norwalk	67	26		12	0		14	0
Norwalk	Notre Dame Health and Rehabilitation	27	14		26	7		18	0

Norwich	Norwich Sub-Acute and Nursing	2	0		54	6		41	0
Norwich	Three Rivers Healthcare*	0	0		20	4		6	0
Old Saybrook	Apple Rehab Saybrook	68	22		4	0		15	0
Old Saybrook	Gladeview Rehabilitation and Health Care	0	0		86	34		56	0
Orange	Orange Health Care Center	43	5		3	0		1	0
Plainfield	Colonial Health and Rehab Center of Plainfield, LLC	0	0		62	4		44	0
Plainfield	Villa Maria Nursing and Rehabilitation Community, Inc.	0	0		43	3		27	0
Plainville	Apple Rehab Farmington Valley	52	19		11	2		28	0
Plymouth	Cook-Willow Health & Rehabilitation Center	0	0		0	0		13	0
Portland	Portland Care & Rehabilitation Centre	21	9		1	0		6	0
Putnam	Matulaitis	1	0		89	7		72	0
Redding	Ridge Crest at Meadow Ridge	10	8		33	12		38	0
Ridgefield	Laurel Ridge Health Care Center	30	12		44	7		52	0
Rocky Hill	60 West	47	7		0	0		5	0
Rocky Hill	Apple Rehab Rocky Hill	75	21		0	1		4	0
Rocky Hill	Maple View Health and Rehabilitation Center	69	33		48	9		15	0
Rocky Hill	The John L. Levitow Health Care Center	6	3		30	5		49	0
Salisbury	Noble Horizons	1	0		0	0		12	0
Seymour	Shady Knoll Health Center	84	48		44	8		40	0
Sharon	Sharon Health Care Center	6	0		3	4		15	0
Shelton	Apple Rehab Shelton Lakes	49	21		21	1		10	0
Shelton	Bishop-Wicke Health and Rehabilitation	46	33		2	0		10	0
Shelton	Gardner Heights Health Care Center	53	26		9	0		13	0
Shelton	Hewitt Health & Rehabilitation Center	78	31		5	0		12	0
Simsbury	Governor's House	8	2		18	6		7	0
Simsbury	McLean Health Care	24	5		12	3		21	0
Southbury	Pomperaug Woods Health Center	4	1		2	1		9	0
Southbury	River Glen Health Care Center	2	0		40	6		37	0
Southbury	The Lutheran Home of Southbury	61	21		31	3		24	0
Southbury	The Watermark at East Hill	0	0		5	0		13	0
Southington	LiveWell	0	0		31	9		26	0
Southington	Southington Care Center	59	10		13	0		34	0
Southington	The Summit at Plantsville	57	18		70	12		36	0
Southport	Southport Center for Nursing and Rehabilitation	67	19		7	0		21	0

Stafford	Evergreen Health Care	67	20		24	1		24	0
Stamford	Cassena Care at Stamford	74	23		23	1		20	0
Stamford	Edgehill Health Center	19	9		3	0		20	1
Stamford	Long Ridge Post-Acute Care	70	27		11	0		13	0
Stamford	St. Camillus Center	50	21		3	0		16	0
Stamford	The Villa at Stamford	51	15		8	0		13	0
Stonington	Apple Rehab Mystic	0	0		19	6		19	0
Stonington	Avalon Health Center	0	0		36	15		39	0
Stonington	Pendleton Health & Rehabilitation Center	0	0		68	9		40	0
Stratford	Chamberlain Healthcare (Manor- LTAC)	17	8		39	1		22	0
Stratford	Lord Chamberlain Nursing & Rehabilitation Center	98	32		63	11		81	0
Suffield	The Suffield House	75	20		17	1		23	0
Tolland	Woodlake at Tolland	0	0		69	8		33	0
Torrington	Litchfield Woods Health Care Center	126	42		5	0		17	0
Torrington	Torrington Center for Nursing and Rehabilitation	33	9		3	0		10	0
Torrington	Valerie Manor Health Care Center	93	22		62	12		38	0
Torrington	Wolcott Hall Nursing Center	18	7		13	0		27	0
Trumbull	Maefair Health Care Center	88	38		49	2		13	0
Trumbull	St Joseph's Center	127	43		24	4		58	0
Vernon	Fox Hill Center	70	17		19	0		12	0
Vernon	Vernon Manor Health Care Center	0	0		43	7		24	0
Wallingford	Masonicare Health Center-LTC	8	3		192	48		137	0
Wallingford	Quinnipiac Valley Center	67	13		22	1		22	0
Wallingford	Regency House of Wallingford	85	38		36	3		23	0
Wallingford	Skyview Rehab and Nursing	67	10		6	0		27	0
Waterbury	Abbott Terrace Health Center	114	46		46	6		24	0
Waterbury	Autumn Lake Healthcare At Bucks Hill	16	4		73	17		41	0
Waterbury	Cheshire House	29	15		57	8		40	0
Waterbury	Grove Manor Nursing Home, Inc.	8	2		27	2		18	0
Waterbury	Mattatuck Health Care Facility	0	0		40	6		25	0
Waterbury	Meridian Manor Corporation***	0	0		0	0		4	0
Waterbury	Waterbury Center for Nursing and Rehabilitation	61	14		30	3		29	0
Waterbury	Waterbury Gardens Nursing and Rehab	41	15		9	3		21	0
Waterford	Bayview Health Care	43	8		21	5		38	0

Waterford	Greentree Manor Nursing & Rehabilitation Center	10	0		57	22		33	0
Waterford	New London Rehab & Care	79	15		4	0		5	0
Watertown	Apple Rehab Watertown	1	2		120	28		63	0
Watertown	Watertown Convalesium	0	0		8	1		11	0
West Hartford	Hebrew Center Health and Rehabilitation	41	18		110	23		54	0
West Hartford	Hughes Health & Rehabilitation	44	24		19	1		19	0
West Hartford	St. Mary Home	90	37		65	8		39	0
West Hartford	The Reservoir Center	23	4		18	3		7	0
West Hartford	West Hartford Health & Rehabilitation Center	98	24		34	10		16	0
West Haven	Apple Rehab West Haven	56	13		4	0		8	0
West Haven	West Haven Center for Nursing and Rehabilitation	37	15		10	1		18	0
Westport	Westport Rehabilitation Complex	37	16		1	0		8	0
Wilton	Wilton Meadows Rehab & Health Care Center	27	26		3	0		10	0
Windham	Douglas Manor	3	0		64	13		55	0
Windham	Saint Joseph Living Center	33	8		49	13		47	0
Windham	Vanderman Place	0	0		7	0		24	0
Windsor	Kimberly Hall North	93	45		15	0		11	0
Windsor	Kimberly Hall South	80	21		19	1		11	0
Windsor	Windsor Health and Rehab	49	22		17	0		7	0
Windsor Locks	Bickford Health Care Center	35	13		6	1		7	0
Wolcott	Wolcott View Manor	0	0		72	7		25	0
Woodbridge	The Willows	63	21		19	0		5	0
Total		8,777	2,849		6,026	1,105		5,539	5

¹Deaths prior to July 22 included data from the Office of the Chief Medical Examiner (OCME). Timing of OCME determinations and NHSN reporting may differ.

²COVID-19-related resident deaths are defined by NHSN as residents who died from SARS-CoV-2 (COVID-19) related complications and includes resident deaths in the facility and in other locations, such as an acute care facility, in which the resident with COVID-19 was transferred to receive treatment. NHSN reporting instructions for nursing homes can be found [here](#).

³Duplication of total count of staff with COVID-19 and/or COVID-related deaths may occur as staff work at multiple facilities during the week. NHSN methodology requires that positive staff to be included in the facility count if the positive staff worked on location during the infectious period where a transmission risk could have occurred to residents and other staff. Please see [here](#) for more details.

*Three Rivers Healthcare permanently closed on September 30, 2020.

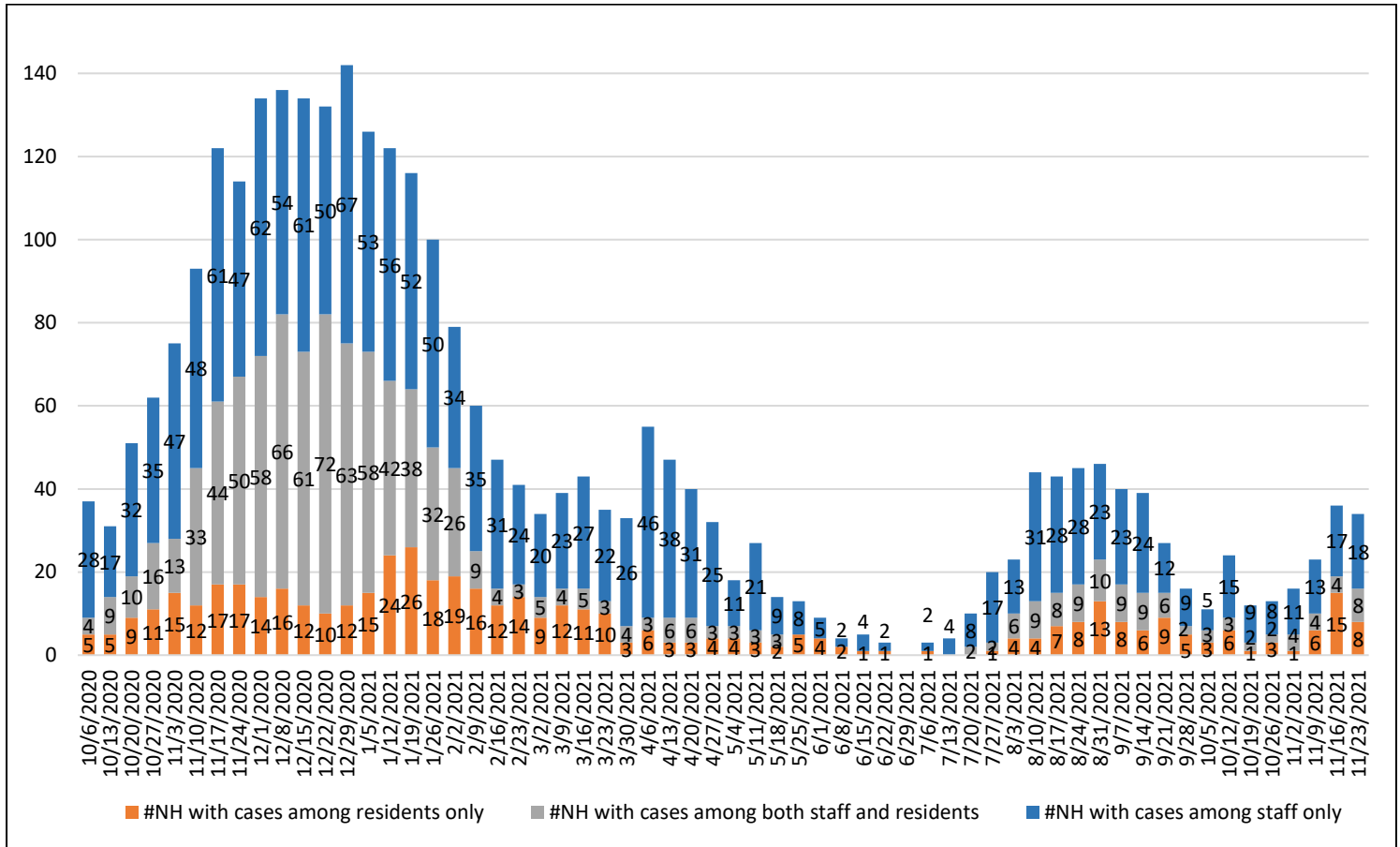
**Cassena Care of New Britain permanently closed on December 19, 2020.

***Meridian Manor permanently closed on January 7, 2021.

****Watrous Nursing Center permanently closed on October 1, 2021.

Connecticut nursing homes are required by the Connecticut Department of Public Health (DPH) and the Centers for Medicare and Medicaid Services (CMS) to report on the impact of COVID-19 on their residents and staff through CDC’s National Healthcare Safety Network (NHSN). CT DPH uses data submitted to NHSN to produce a weekly nursing home report to depict recent COVID-19 activity in nursing homes. The following graph and table provide a quick overview of COVID-19 in CT nursing homes. For the complete DPH nursing home report, please see [Nursing Home and Assisted Living Facilities Data](#).

Figure 1. Nursing Homes with Positive Staff or Residents October 27, 2020–November 23, 2021^{1,2,3}



¹ For more detailed information on COVID-19 reporting and NHSN, please see [here](#).

² Similar to DPH, CMS makes COVID-19 nursing home data, including vaccination rates, publicly available. Please see [CMS’ COVID-19 Nursing Home Data website](#).

³19 facilities did not report for this week, as of November 26, 2021.

Table 1: Statewide COVID-19 Vaccination coverage among nursing home residents and staff from NHSN^{1,2}

	Statewide COVID-19 Vaccination Rate Data as of November 14, 2021	
	Resident Vaccination Rates N= 202 homes	Staff Vaccination Rates N= 204 homes
Average Vaccination Rate	91%	96%
Median Vaccination Rate	94%	97%
Range of Vaccination Rates	67-100%	81-100%
% of the reporting nursing homes with vaccination rate ≥ 90%	75 %	92%

¹ NHSN vaccine reporting instructions for nursing homes can be found [here](#).

² Similar to DPH, CMS makes COVID-19 nursing home data, including vaccination rates, publicly available. Please see [CMS’ COVID-19 Nursing Home Data website](#).