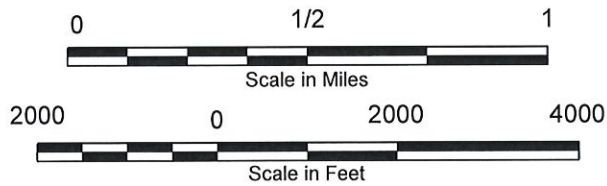
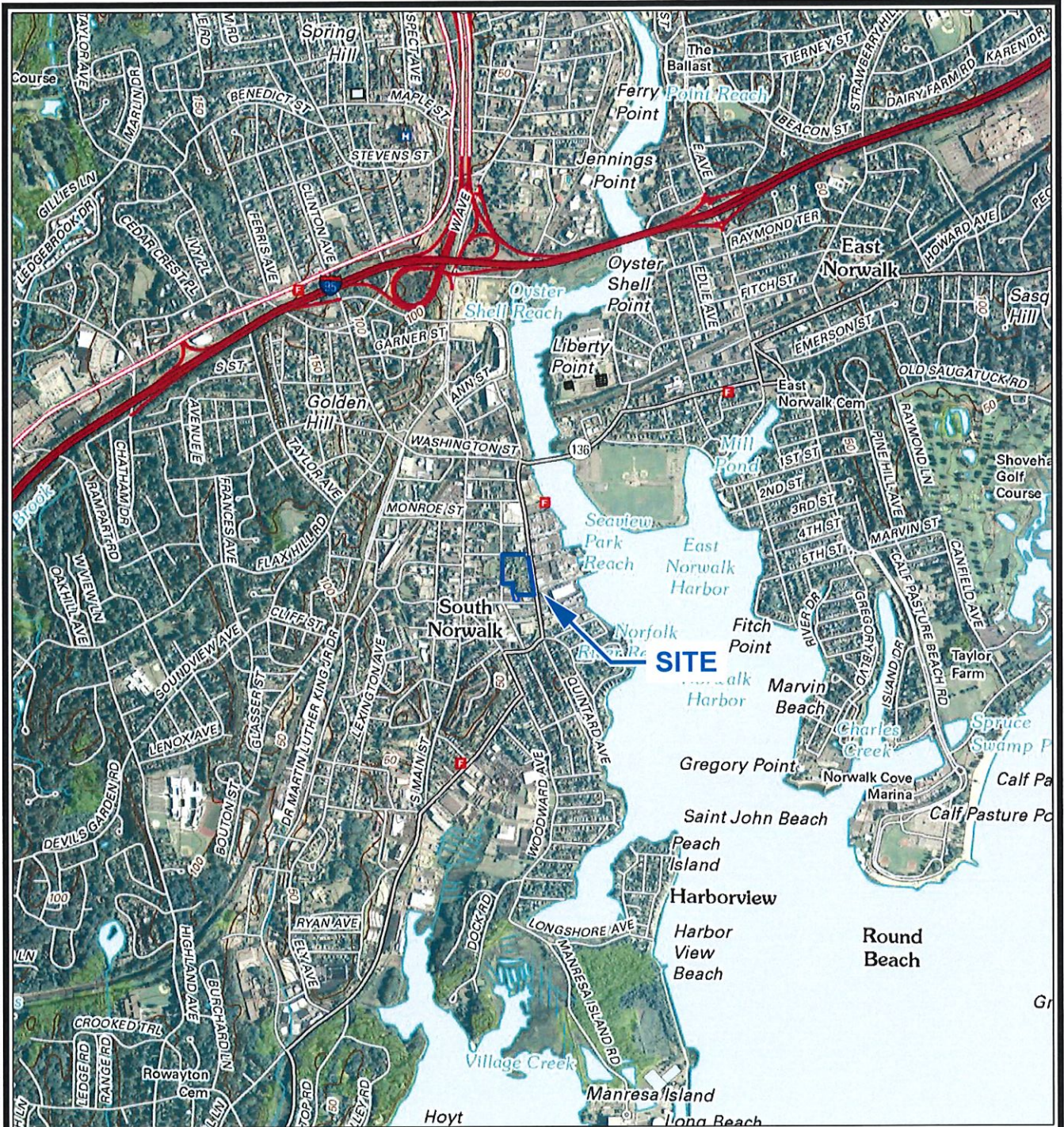


TPENNISI 12/15/14 [SLM-RAYMOND ST_NORWALK_CT_LPH 1



SOURCE:
 USGS 7.5 QUADRANGLE TOPOGRAPHIC MAP, NORWALK SOUTH, CONNECTICUT, MAP VERSION 2012; MAP SCALE 1:24,000; N:41.095873° W:73.416747°
 WGS84



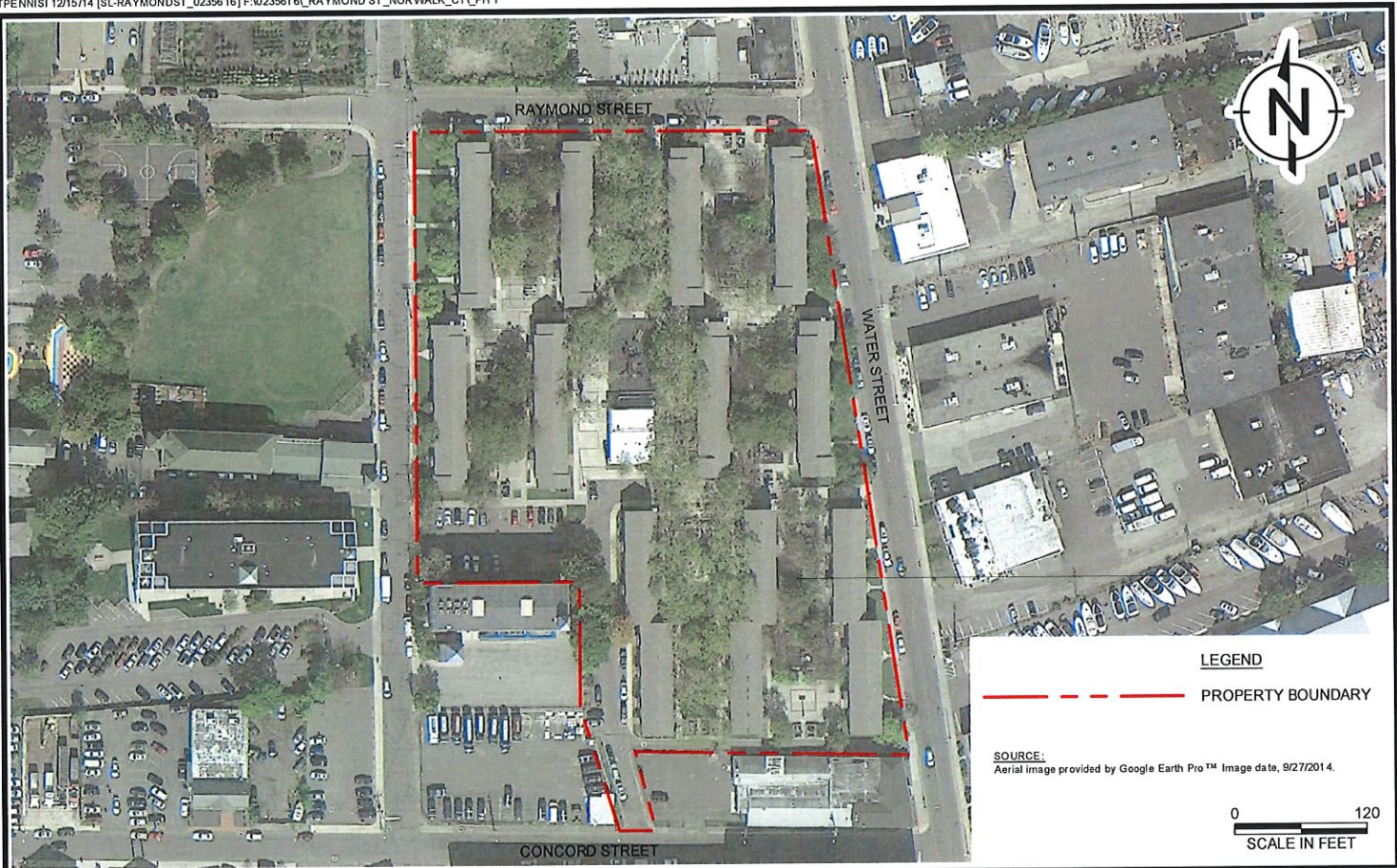
DRAFTED BY: TSP

DATE: 12/15/2014

SITE LOCATION MAP
 WASHINGTON VILLAGE
 RAYMOND STREET
 NORWALK, CONNECTICUT

FIGURE
1

0235616A



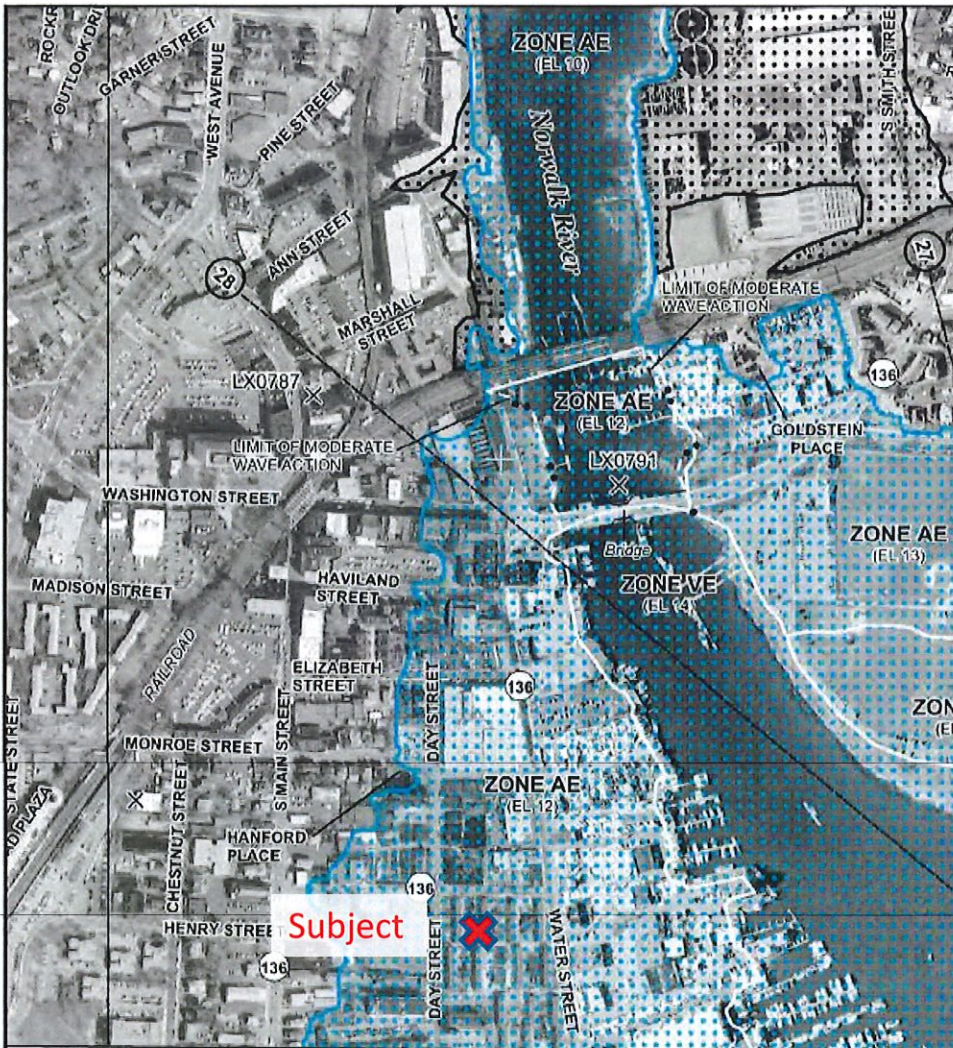
DRAFTED BY: TSP

DATE: 12/15/2014

SITE LAYOUT
WASHINGTON VILLAGE
RAYMOND STREET
NORWALK, CONNECTICUT

FIGURE
2

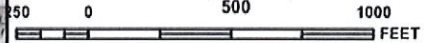
0235616A



NS PANEL 0533



MAP SCALE 1" = 500'



NATIONAL FLOOD INSURANCE PROGRAM

PANEL 0531G

FIRM
FLOOD INSURANCE RATE MAP
FAIRFIELD COUNTY,
CONNECTICUT
(ALL JURISDICTIONS)

PANEL 531 OF 626
 (SEE MAP INDEX FOR FIRM PANEL LAYOUT)

COMMUNITY	NUMBER	PANEL	SUFFIX
NORWALK, CITY OF	00012	0531	G

Notice to User: The Map Number shown below should be used when placing map orders; the Community Number shown above should be used on insurance applications for the subject community.



MAP NUMBER
 09001C0531G
 MAP REVISED
 JULY 8, 2013

Federal Emergency Management Agency

This is an official copy of a portion of the above referenced flood map. It was extracted using F-MIT On-Line. This map does not reflect changes or amendments which may have been made subsequent to the date on the title block. For the latest product information about National Flood Insurance Program flood maps check the FEMA Flood Map Store at www.msc.fema.gov