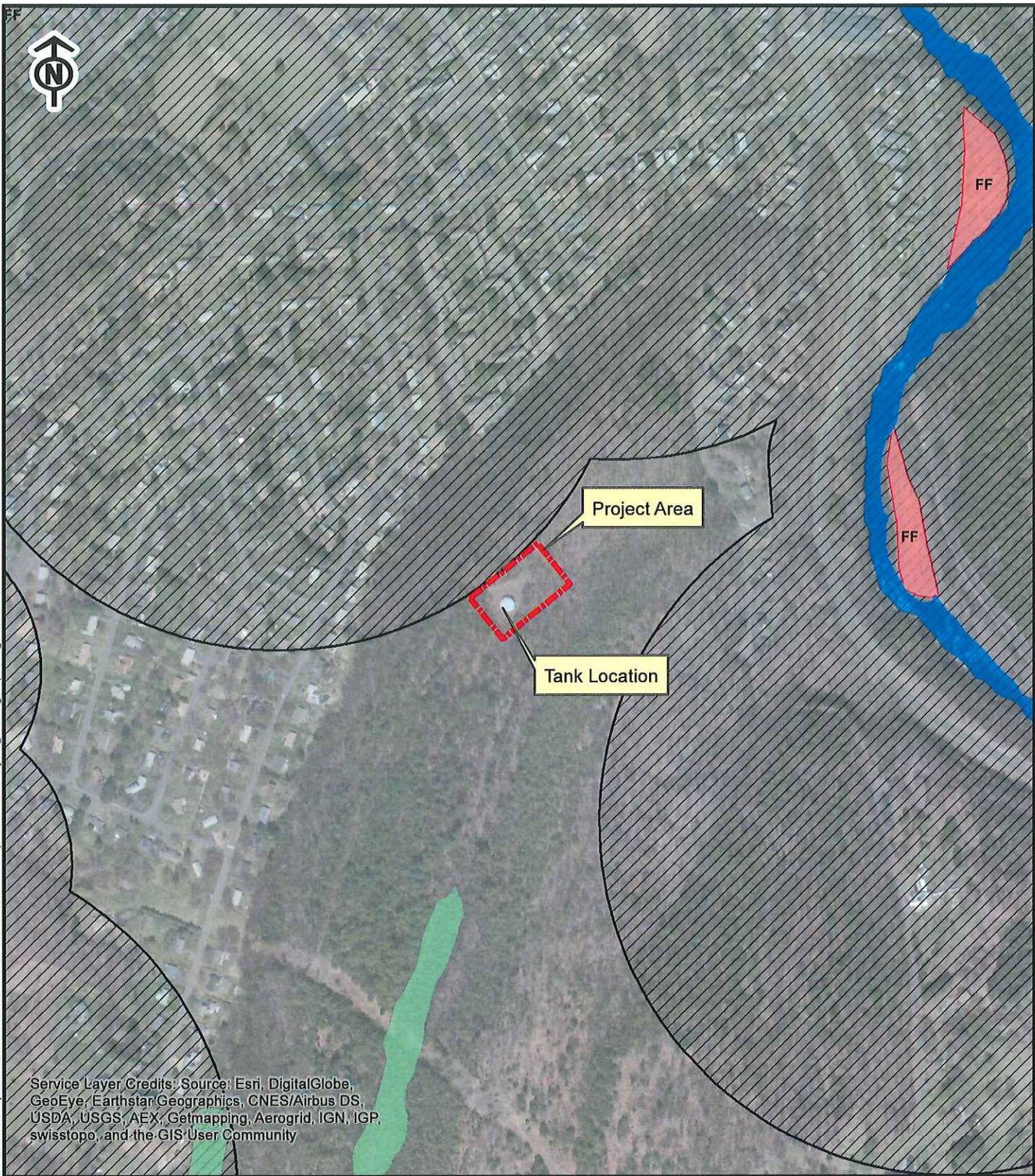


**Figure 2-4: USGS Topographic Map of Tariffville Service Area and Proposed Project Location**








SCALE: 1:9,000	DOC: Figure 2-4.mxd
DATE: JUNE 2015	PROJECT #: 225993.05
DRAWN BY: SET	SOURCE: USGS TNM Topo Base

Figure Exported: 6/26/2015 By: staylor Using: \\w\share\Projects\225993 Tariffville Water District - New Tank\wp\GIS\Preliminary Engineering Report\Figure 2-5.mxd



Service Layer Credits: Source: Esri, DigitalGlobe, GeoEye, Earthstar Geographics, CNES/Airbus DS, USDA, USGS, AEX, Getmapping, Aerogrid, IGN, IGP, swisstopo, and the GIS User Community

**Legend**

-  Project Area
- Wetlands (NWI)**
-  Freshwater Forested/Shrub Wetland
-  Riverine
- Critical Habitat**
- PALUSTRINE FORESTED**
-  Floodplain Forest, FF
-  Natural Diversity Area



**Figure 2-5: Orthophoto**



SCALE: 1:6,000	DOC: Figure 2-5.mxd
DATE: JUNE 2015	PROJECT #: 225993.05
DRAWN BY: SET	SOURCE: ESRI World Imagery