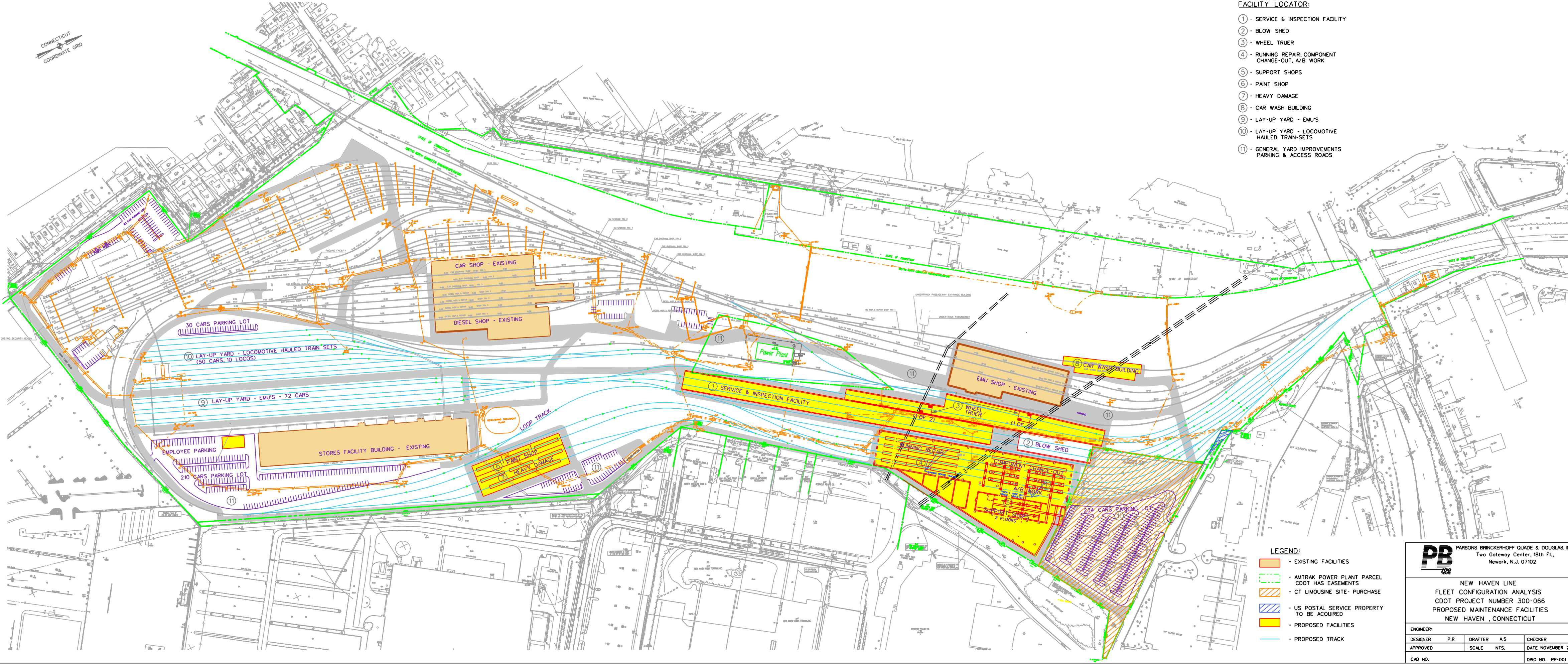


- FACILITY LOCATOR:**
- ① - SERVICE & INSPECTION FACILITY
  - ② - BLOW SHED
  - ③ - WHEEL TRUER
  - ④ - RUNNING REPAIR, COMPONENT CHANGE-OUT, A/B WORK
  - ⑤ - SUPPORT SHOPS
  - ⑥ - PAINT SHOP
  - ⑦ - HEAVY DAMAGE
  - ⑧ - CAR WASH BUILDING
  - ⑨ - LAY-UP YARD - EMU'S
  - ⑩ - LAY-UP YARD - LOCOMOTIVE HAULED TRAIN-SETS
  - ⑪ - GENERAL YARD IMPROVEMENTS PARKING & ACCESS ROADS



- LEGEND:**
- EXISTING FACILITIES
  - AMTRAK POWER PLANT PARCEL CDOT HAS EASEMENTS
  - CT LIMOUSINE SITE- PURCHASE
  - US POSTAL SERVICE PROPERTY TO BE ACQUIRED
  - PROPOSED FACILITIES
  - PROPOSED TRACK

**PB** PARSONS BRINCKERHOFF QUADE & DOUGLAS, INC.  
Two Gateway Center, 18th Fl.,  
Newark, N.J. 07102

NEW HAVEN LINE  
FLEET CONFIGURATION ANALYSIS  
CDOT PROJECT NUMBER 300-066  
PROPOSED MAINTENANCE FACILITIES  
NEW HAVEN, CONNECTICUT

ENGINEER:	P.R.	DRAFTER	A.S.	CHECKER
APPROVED	SCALE	NTS.	DATE NOVEMBER 2001	
CAD NO.				DWG. NO. PP-001