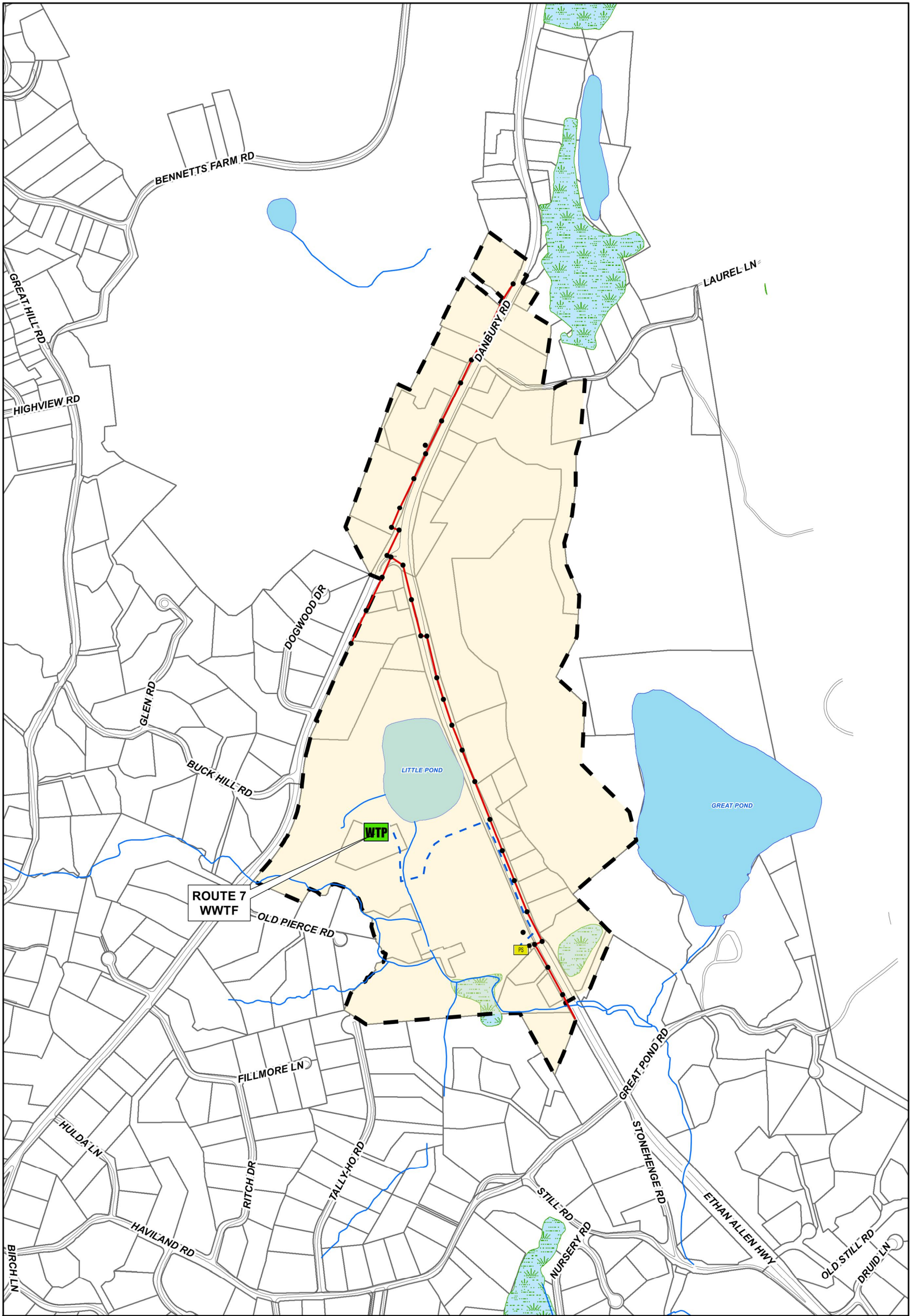


	Map Location	Legend 	
	Drawn: BC 4/8/2015 Approved: AA 4/8/2015		
		0 625 1,250 2,500 Feet	PHASE I WASTEWATER FACILITIES PLAN RIDGEFIELD, CT

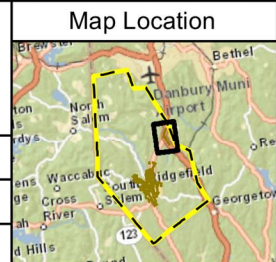
G:\Projects\MUNI\60299267RID\Maps\Facilities Flow Report\Figure 8-3 - Sewer Needs Areas.mxd

FIGURE 1 - RIDGEFIELD SOUTH STREET WWTF, SEWER DISTRICT 1, AND ADDITIONAL SEWER NEEDS AREAS



AECOM

Drawn: BC 4/23/2015
 Approved: AA 4/23/2015



Legend

- WTF WWTF
- PS Pump Station
- Manhole
- Municipal Sewer
- Roads
- Force Main
- Streams
- Swamps
- Waterbodies
- Parcel Polygon

0 300 600 1,200 Feet

N

PHASE I WASTEWATER FACILITIES PLAN
 RIDGEFIELD, CT

G:\Projects\MUNI\60299267RID\Maps\Facilities Flow Report\Figure 2-5 - Existing Sewer District 2.mxd

FIGURE 2 – RIDGEFIELD ROUTE 7 WWTF AND SEWER DISTRICT 2

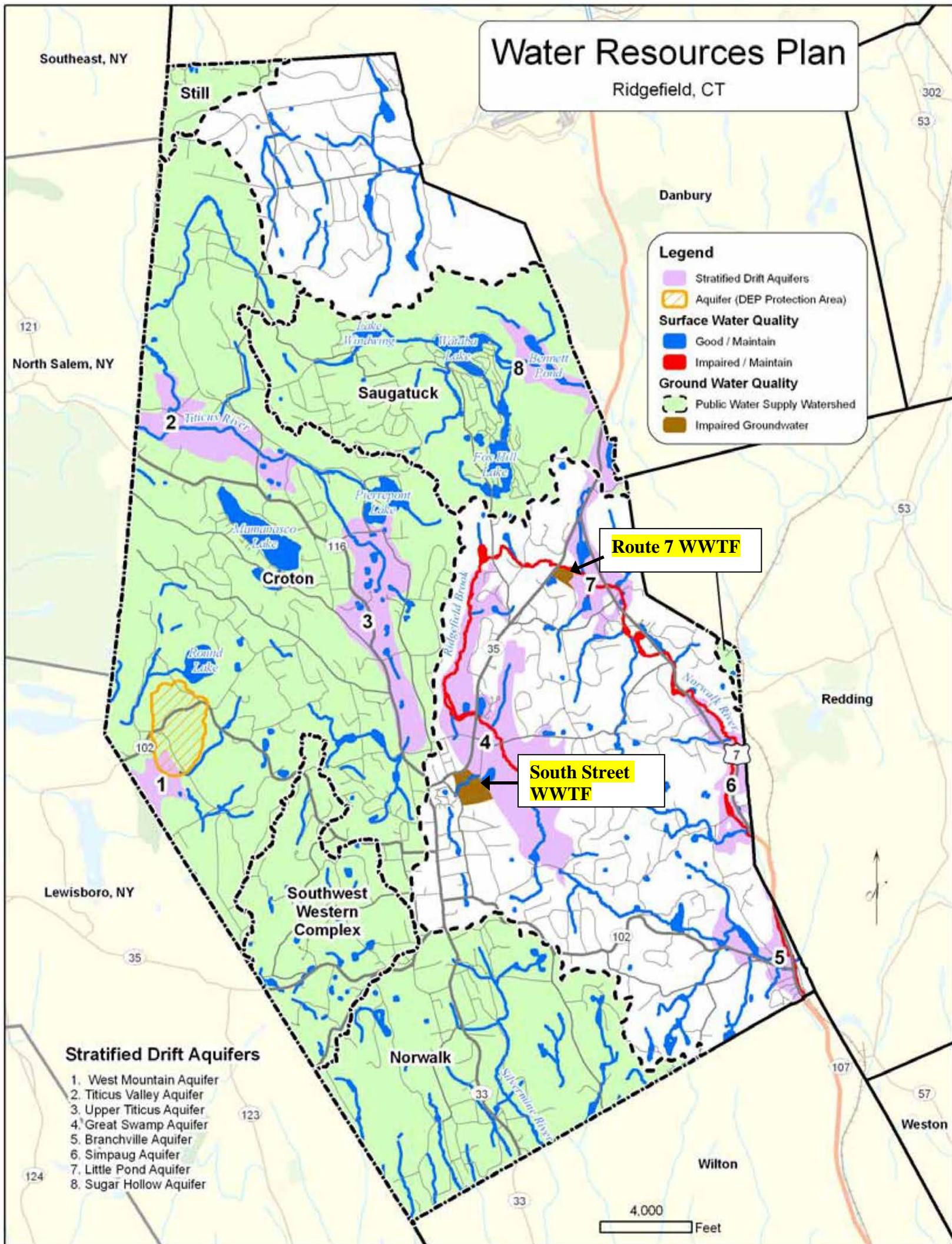


FIGURE 3 - WATER RESOURCES PLAN (FROM RIDGEFIELD'S 2010 PLAN OF CONSERVATION AND DEVELOPMENT)

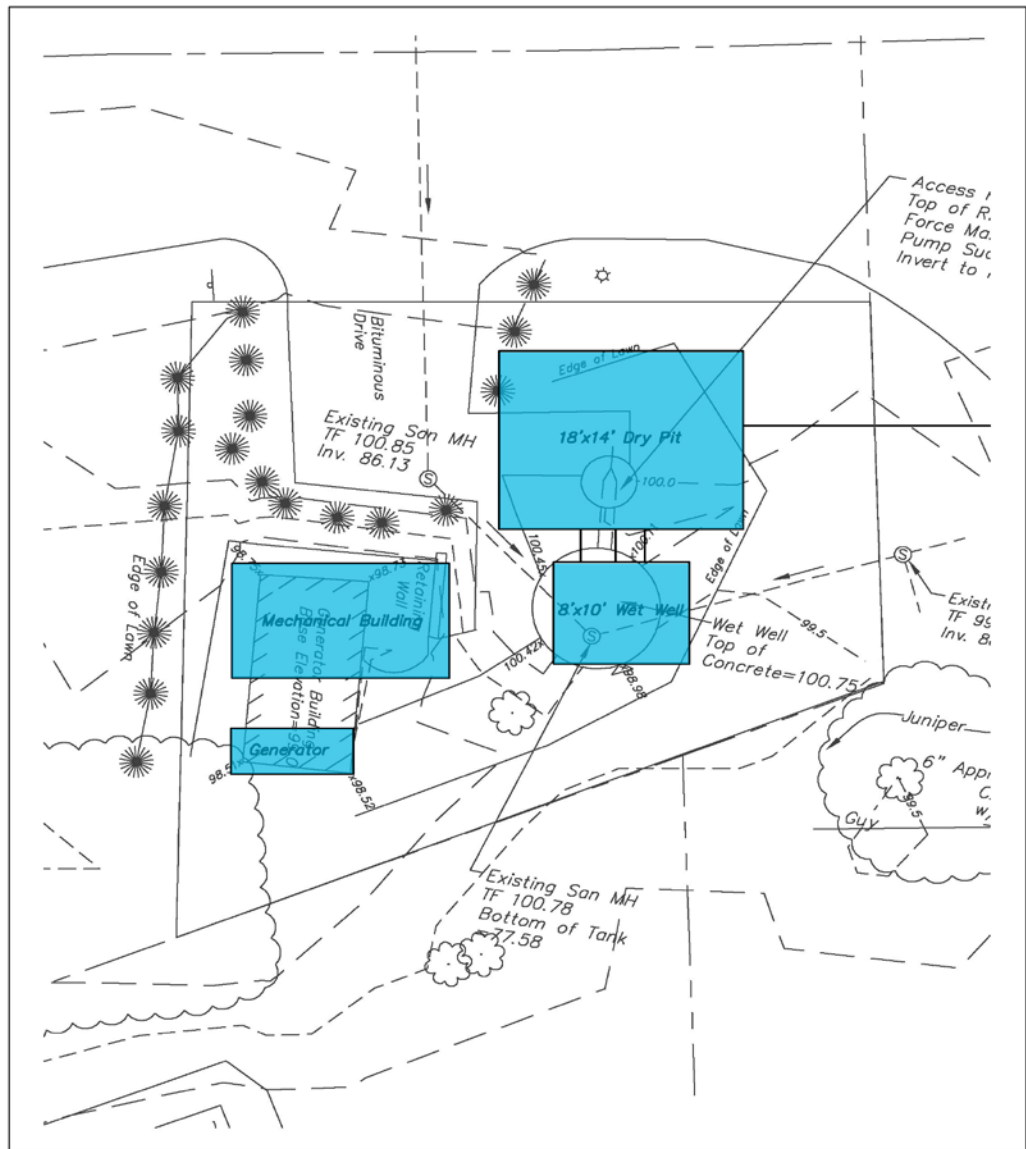


FIGURE 4 - RECOMMENDED REPLACEMENT ROUTE 7 PUMP STATION

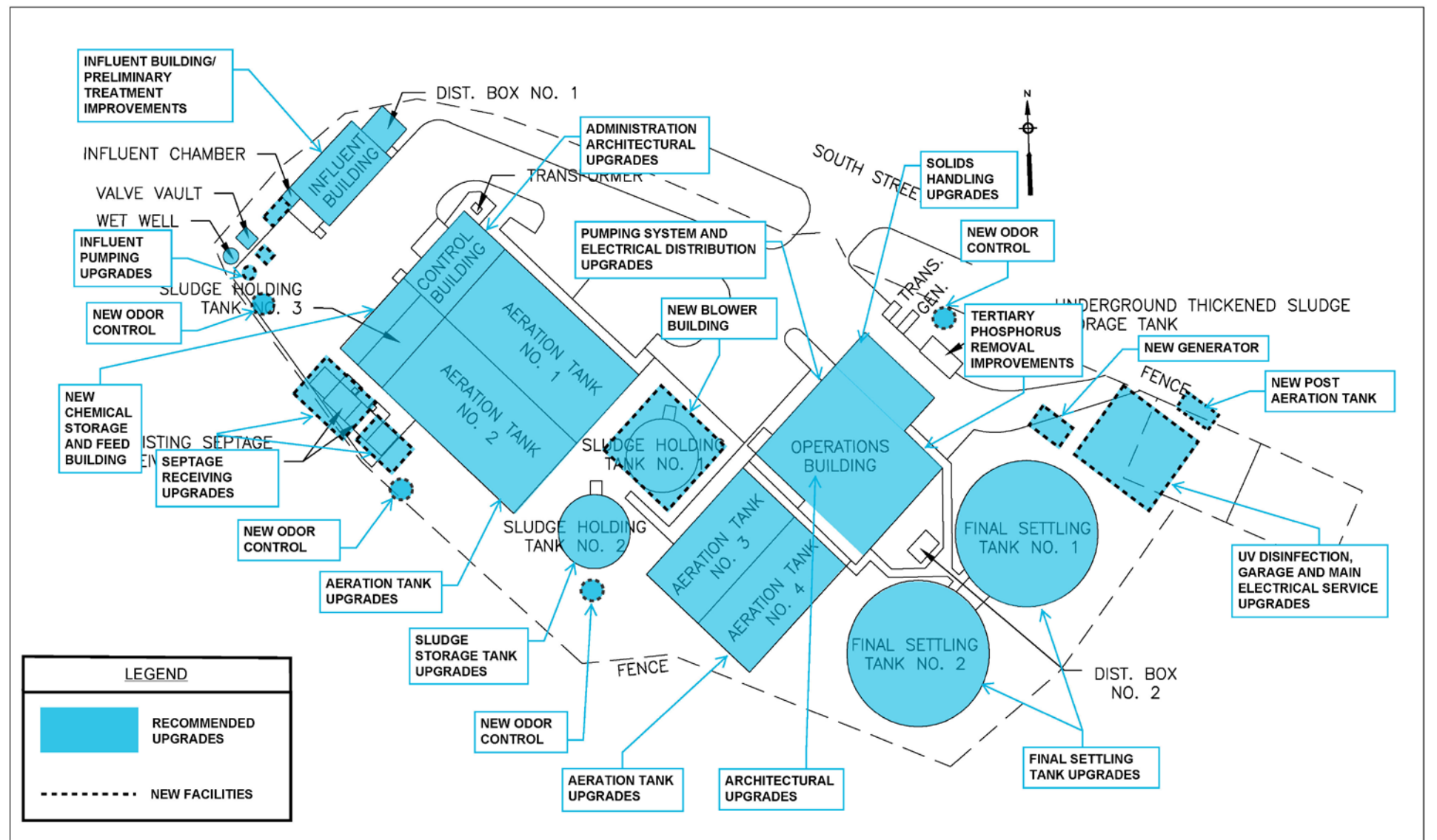
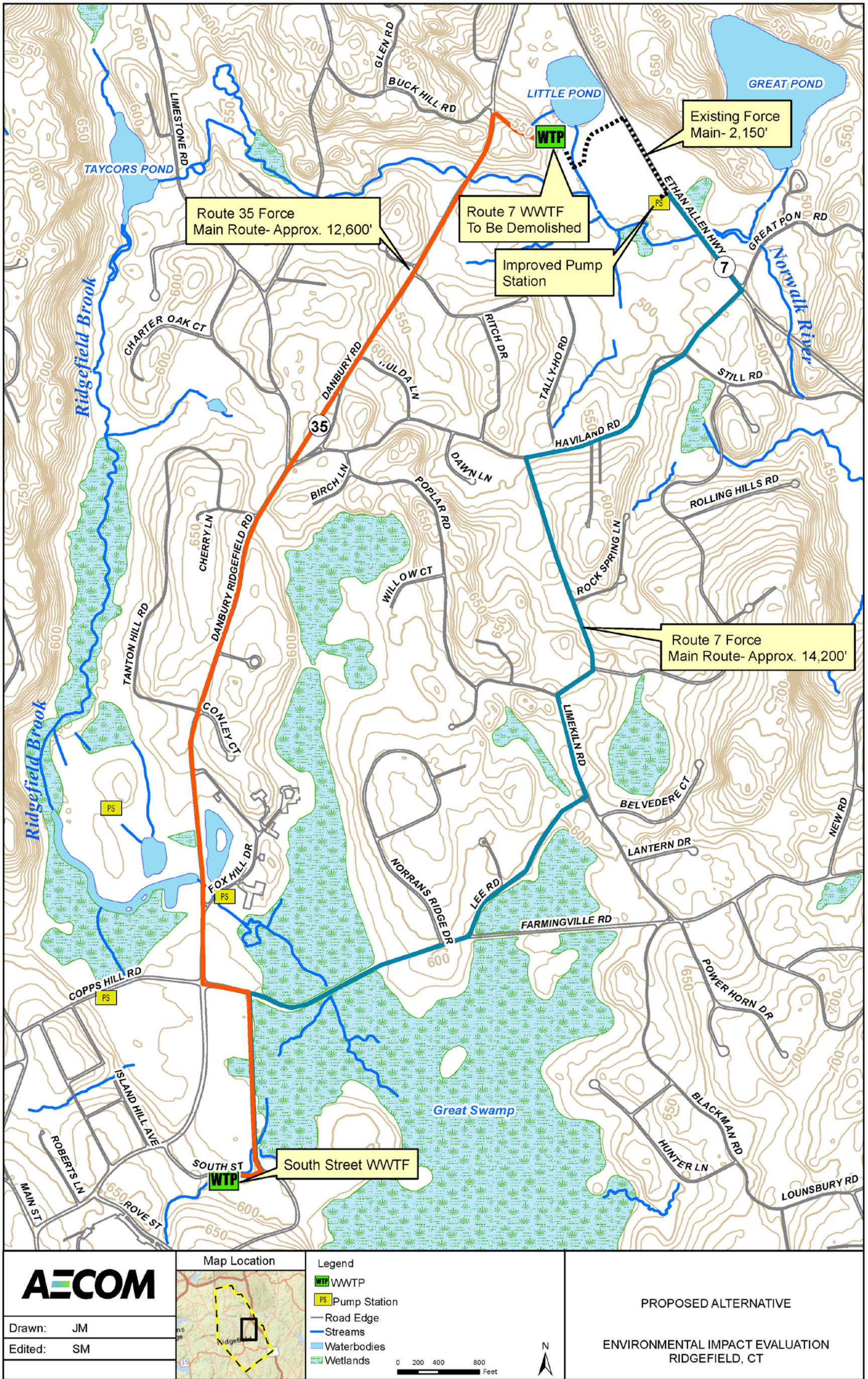
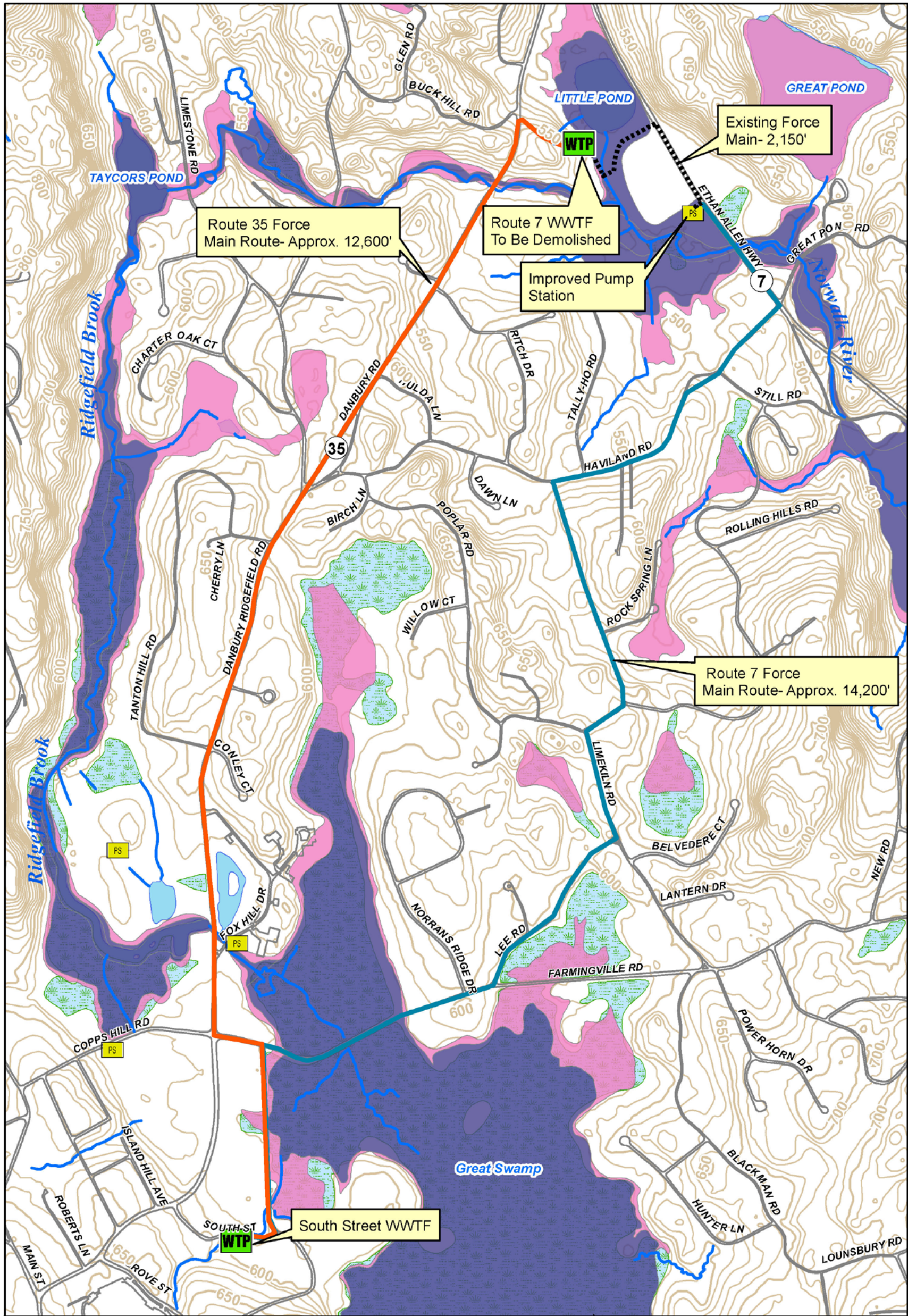


FIGURE 5 - RECOMMENDED SOUTH STREET WWTf UPGRADES



G:\Projects\MUNI\60299267RID\Maps\EIE\RidgefieldImpacts.mxd

FIGURE 6 - RECOMMENDED RIDGEFIELD WASTEWATER FACILITIES UPGRADES FORCE MAIN ALTERNATIVES



	Map Location 	Legend 	<p style="text-align: center;">FLOODPLAINS MAP</p> <p style="text-align: center;">WASTEWATER FACILITIES PLAN ENVIRONMENTAL IMPACT EVALUATION RIDGEFIELD, CT</p>
	Drawn: JM Edited: SM	<p style="text-align: center;">0 200 400 800 Feet</p> <p style="text-align: center;">N</p>	

G:\Projects\MUNI\60299267 RID\Maps\IE\ RidgefieldImpacts.mxd

FIGURE 7 - PROJECT AREA FLOODPLAIN MAP (SOURCE: CT DEEP GIS DATA, FEMA DFIRM: MAP 09001C0236F)

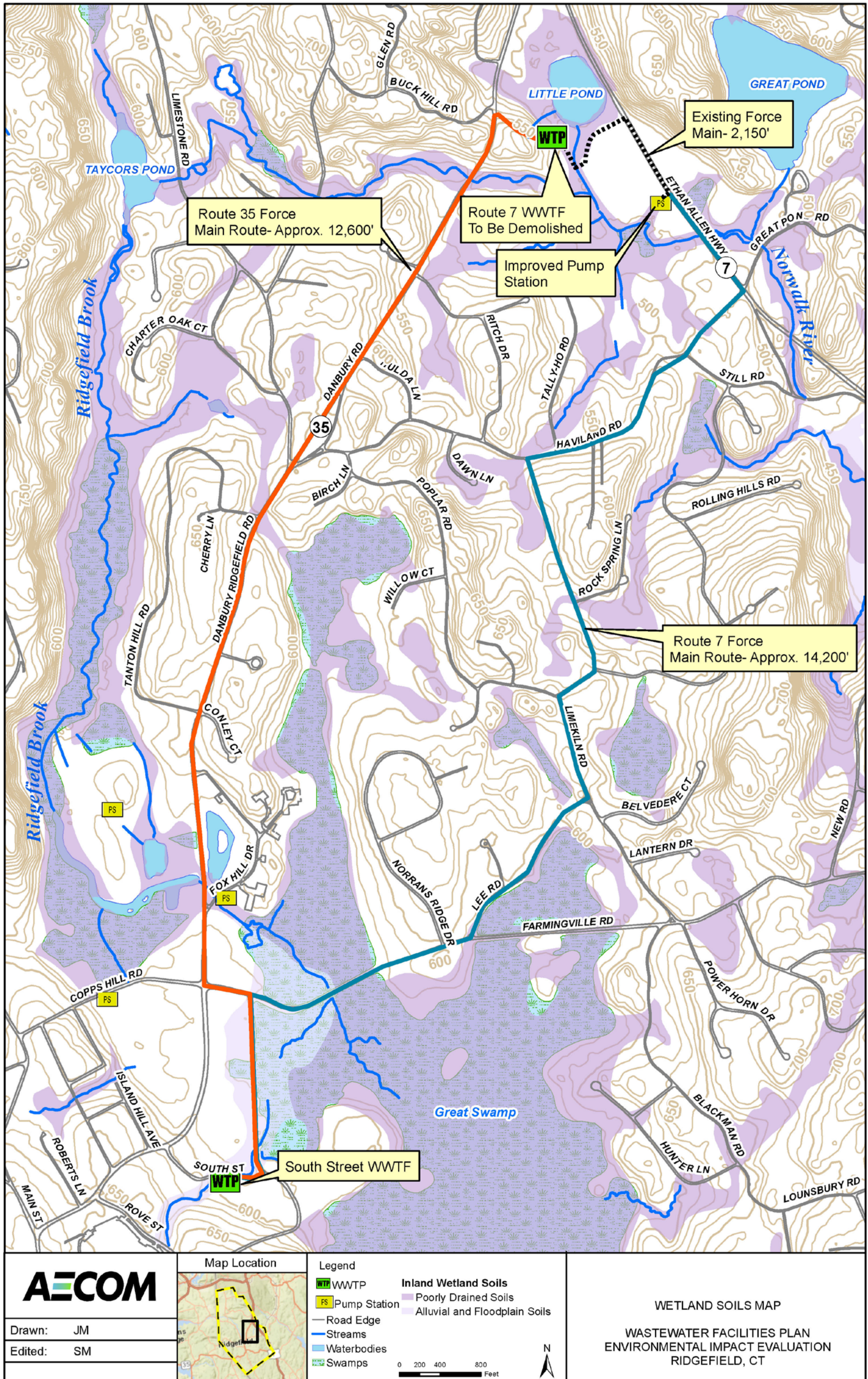


FIGURE 8 - PROJECT AREA MAPPED WETLAND SOILS (SOURCE: CT DEEP GIS DATA, WETLAND SOILS)

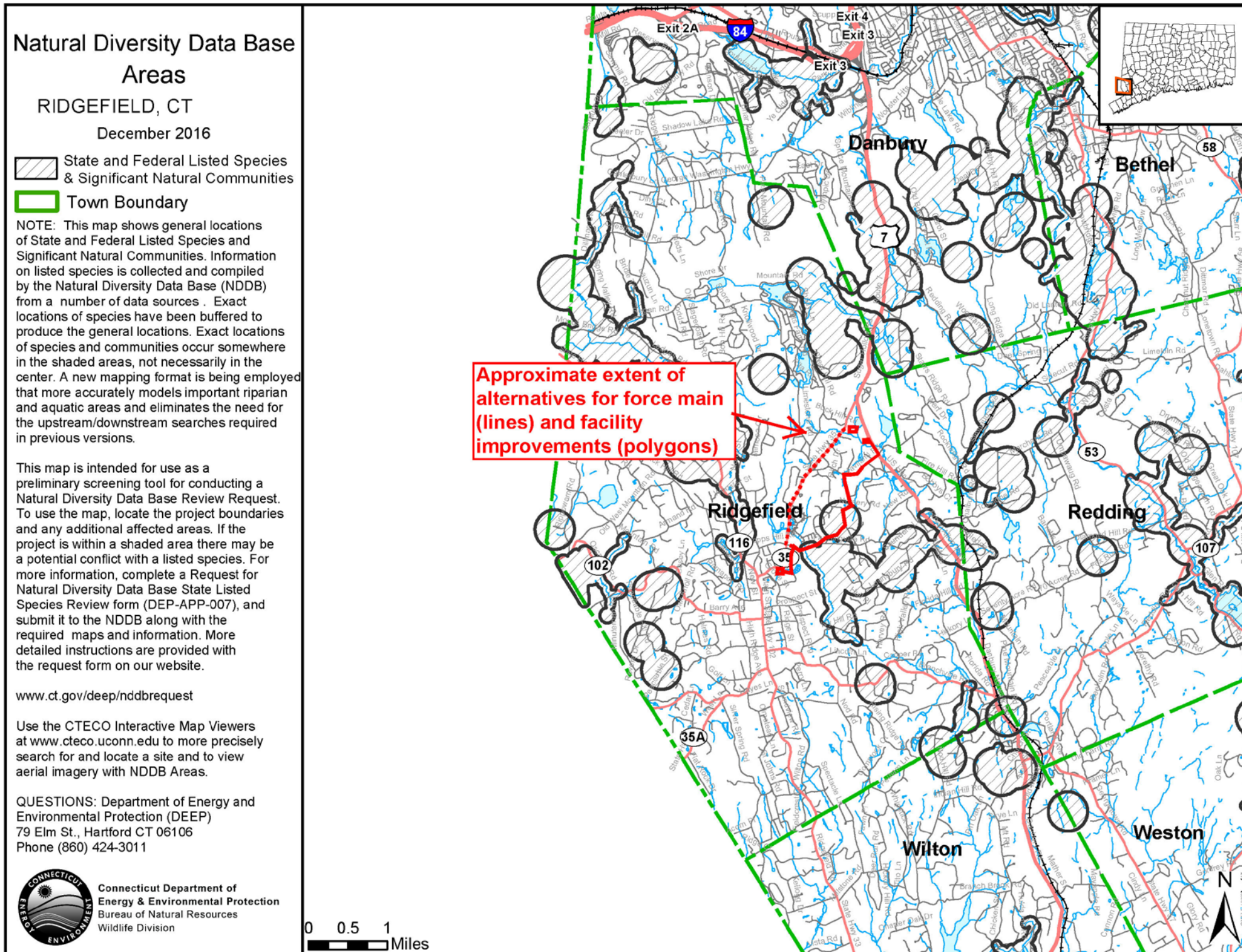
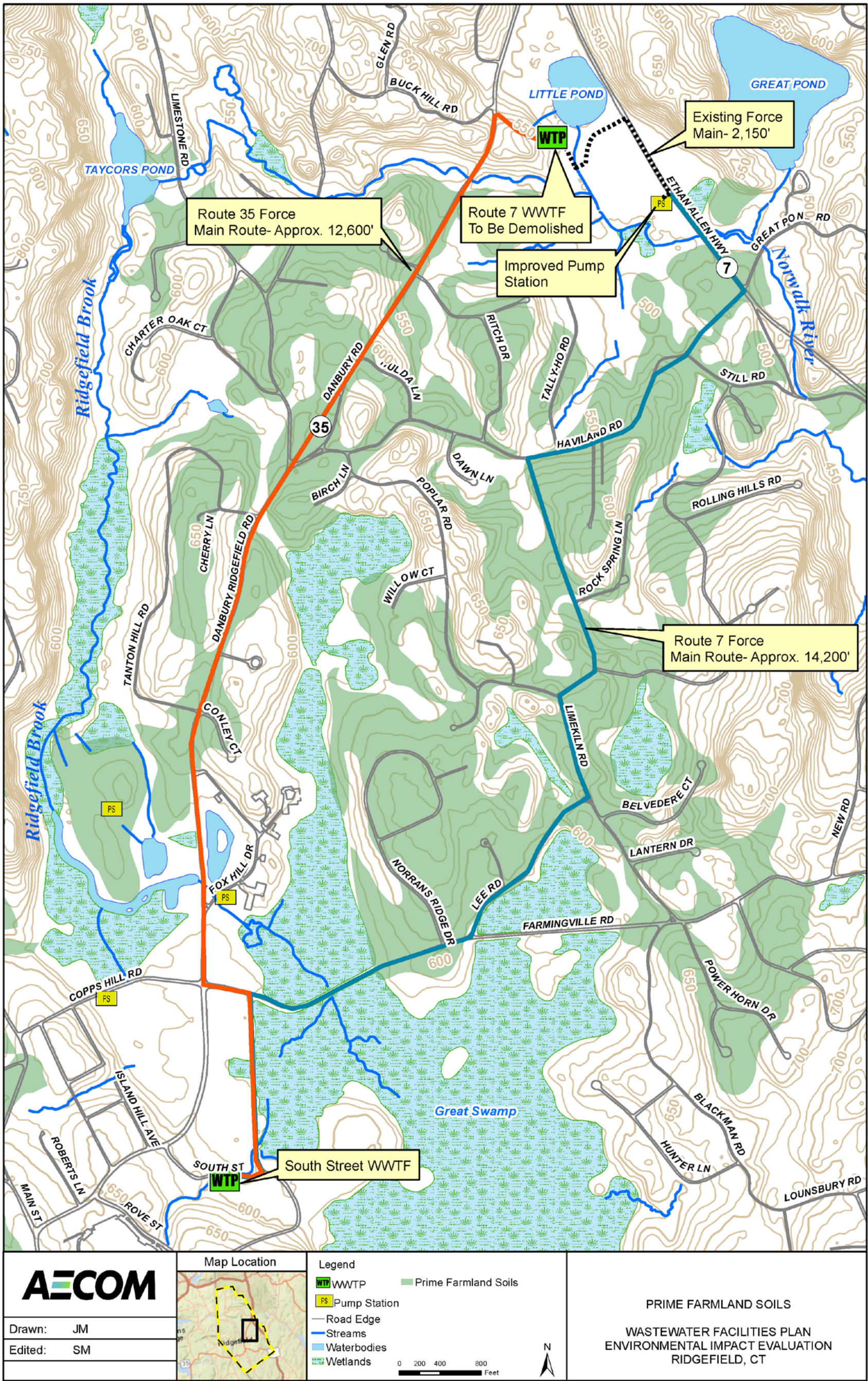


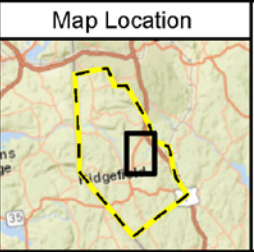
FIGURE 9 – CONNECTICUT NATIONAL DIVERSITY DATA BASE MAP FOR THE TOWN OF RIDGEFIELD WITH SUPERIMPOSED PROJECT AREA (SOURCE: CT DEEP NDDB, [HTTP://WWW.DEpdata.CT.GOV/NATURALRESOURCES/ENDANGEREDSPECIES/NDDBPDFS.ASP](http://www.depdata.ct.gov/naturalresources/endangeredspecies/nddbpdfs.asp))



G:\Projects\MUNI\60299267RID\Maps\EIE\RidgefieldImpacts.mxd



Drawn: JM
 Edited: SM

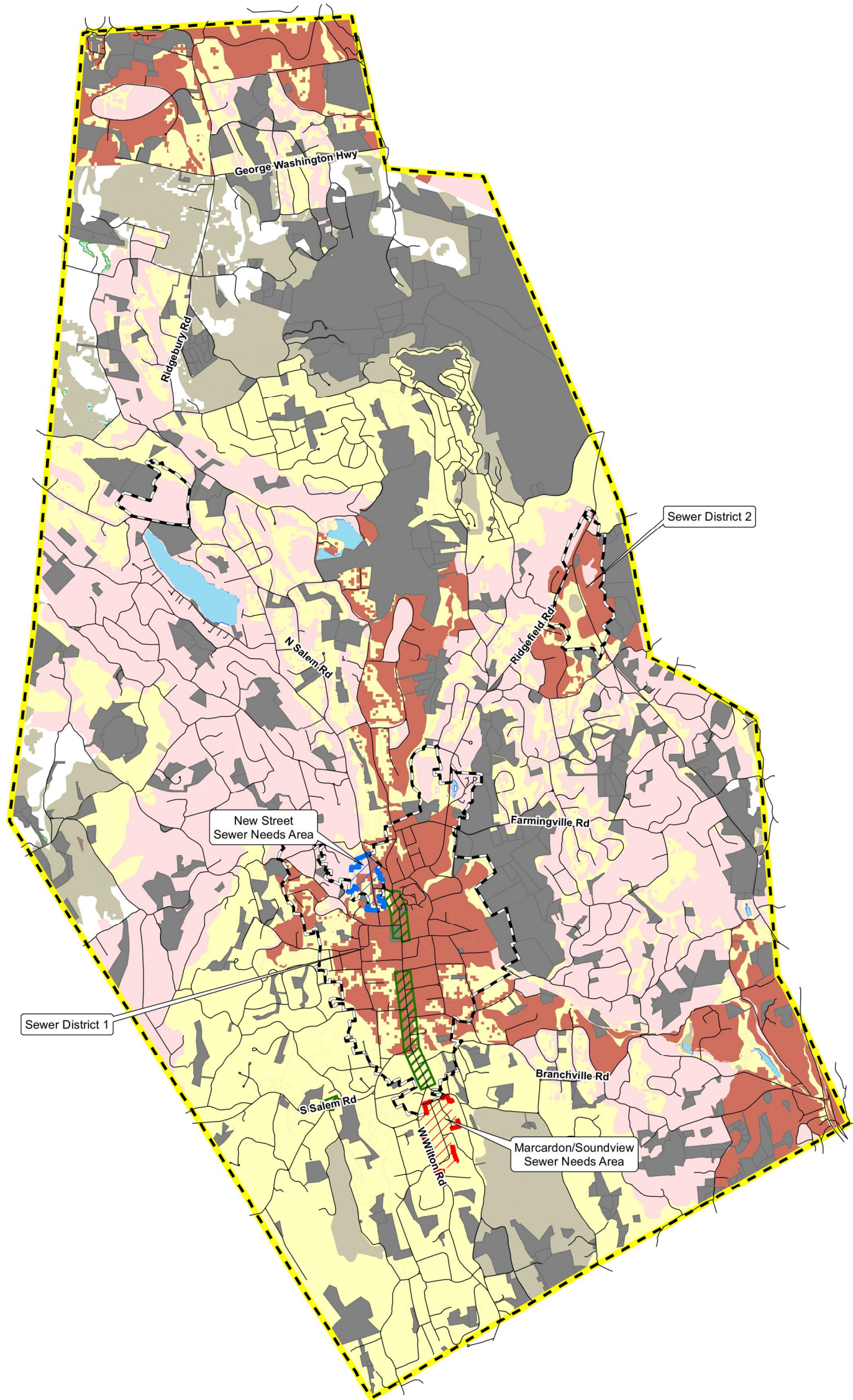









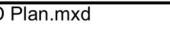
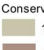

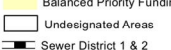
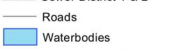

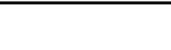


- Legend**
- Prime Farmland Soils
 - WTP WWTP
 - PS Pump Station
 - Road Edge
 - Streams
 - Waterbodies
 - Wetlands



PRIME FARMLAND SOILS
 WASTEWATER FACILITIES PLAN
 ENVIRONMENTAL IMPACT EVALUATION
 RIDGEFIELD, CT

FIGURE 10 - PROJECT AREA PRIME FARMLAND SOILS MAP (SOURCE: CT DEEP GIS DATA, PRIME FARMLAND SOILS)



	Map Location 	Legend <ul style="list-style-type: none">  Local Historic District  Protected Lands Priority Funding Areas  1 - 2 Criteria  2 - 4 Criteria  4 - 6 Criteria  Village Priority Funding Area Conservation Areas  1-3 Conservation Factors  4-5 Conservation Factors  6-7 Conservation Factors  Balanced Priority Funding Area  Undesignated Areas  Sewer District 1 & 2  Roads  Waterbodies 	LOCATIONAL GUIDE MAP 2013 - 2018 STATE C&D PLAN MARCH 2015 RIDGEFIELD, CT PHASE I WASTEWATER FACILITIES PLAN TECHNICAL MEMORANDUM NO. 7
	Drawn: BC 6/15/2017 Approved: AA 6/15/2017		

G:\Projects\MUNI\60299267RID\Tech Memo 7\Maps\Figure 4 - State C_D Plan.mxd

FIGURE 11 - 2013 TO 2018 CT STATE CONSERVATION AND DEVELOPMENT PLAN LOCATIONAL GUIDE MAP