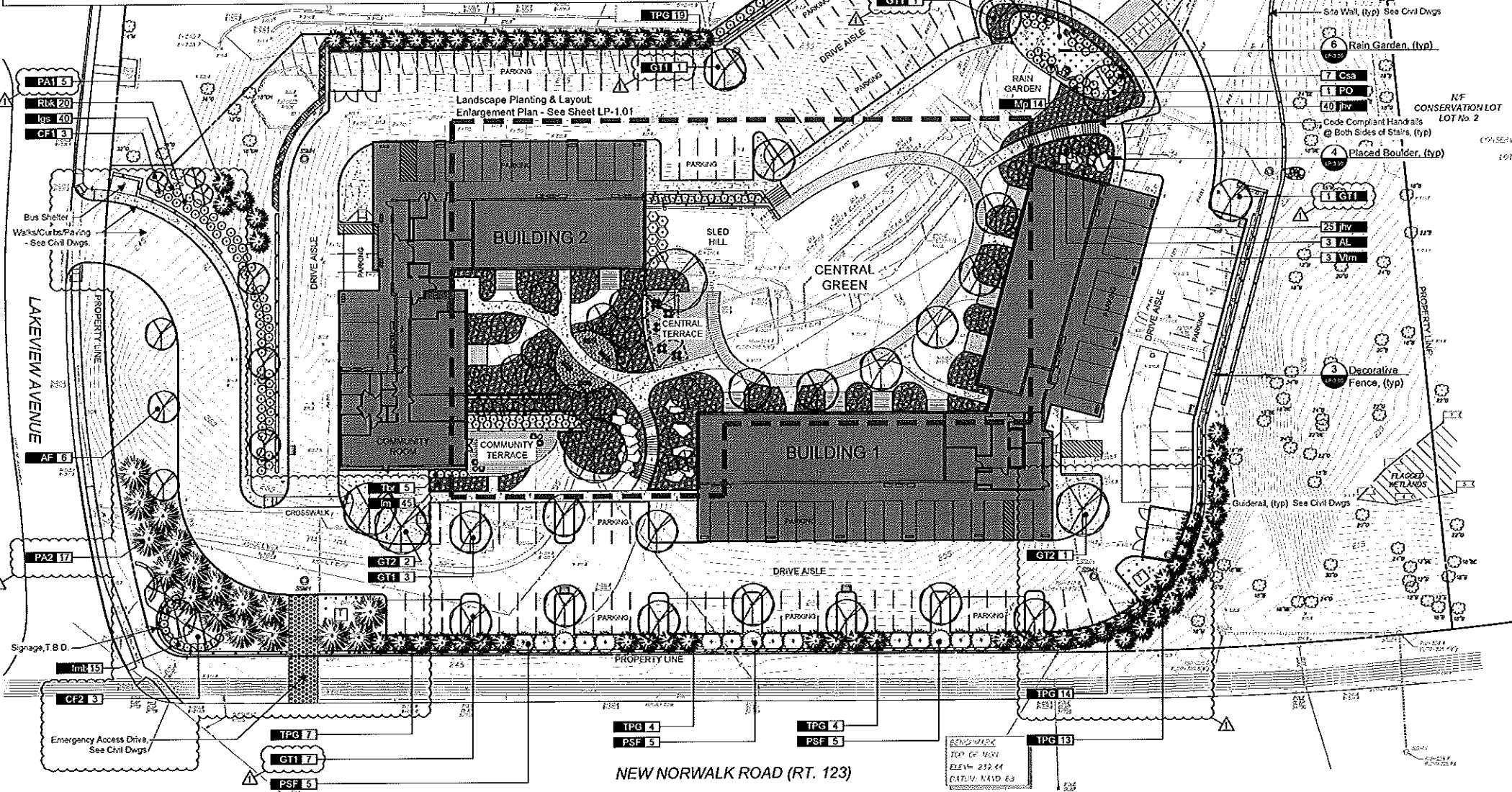


CANAAN PARISH REDEVELOPMENT, LLC  
 Canaan Parish Redevelopment  
 186 LAKEVIEW AVE  
 NEW CANAAN, CT 06840

Proposed Plant Schedule

Trees					
Qty.	Symbol	Botanical Name	Common Name	Size	Cond. Remarks
6	AF	<i>Acer x freemanii</i> 'Armstrong'	Freeman Maple	3' - 3 1/2' CAL	B&B Full, nicely shaped, fast gate
7	AL	<i>Amelanchier lamarckii</i>	Muskegon Lamack Junberry	7' - 8' HT	B&B Full, nicely shaped, multistem
1	DF	<i>Cornus florida</i> 'Cherokee'	Flowering Dogwood	7' - 8' HT	B&B Full, nicely shaped, nicely shaped
3	CF2	<i>Cornus florida</i> 'Cherokee Process'	Flowering Dogwood	16' - 12' HT	B&B Full, nicely shaped, nicely shaped
11	BP	<i>Rhynchospora virginica</i>	White Top	16' - 12' HT	B&B Full, nicely shaped, multistem
15	GT1	<i>Gladiolus triacanthos</i> 'Christa'	Haika Honey Locust	3' - 3 1/2' CAL	B&B Full, nicely shaped
3	GT2	<i>Gladiolus triacanthos</i> 'Christa'	Haika Honey Locust	3 1/2' - 4' CAL	B&B Full, nicely shaped
5	PA1	<i>Picea abies</i>	Norway Spruce	8' - 10' HT.	B&B Full to ground, nicely shaped, natural
17	PA2	<i>Picea abies</i>	Norway Spruce	14' - 15' HT.	B&B Full to ground, nicely shaped, natural
3	MS	<i>Magnolia soulangiana</i>	American Sycamore	3' - 3 1/2' CAL	B&B Full, nicely shaped
1	MS	<i>Magnolia soulangiana</i>	American Sycamore	8' - 10' HT.	B&B Full, nicely shaped, specimen
15	PSF	<i>Pinus strobus</i> 'Fastigata'	Pyramidal White Pine	8' - 10' HT.	B&B Full to ground, nicely shaped
6	QR	<i>Quercus rubra</i>	Red Oak	3' - 3 1/2' CAL	B&B Full, nicely shaped
13	RS	<i>Rosa rugosa</i> 'Green Gaze'	Walter's Red Rose	8' - 10' HT.	B&B Full, nicely shaped
Shrubs					
Qty.	Symbol	Botanical Name	Common Name	Size	Cond. Remarks
14	Csa	<i>Cornus sericea</i> 'Arctic Fire'	Red Twig Dogwood	#5	CONT. Full, nicely shaped
27	Exm	<i>Euonymus alatus</i> 'Manhattan'	Manhattan Euonymus	#5	CONT. Full, nicely shaped
22	Hp	<i>Hydrangea paniculata</i> 'Little Lime'	Little Lime Hydrangea	#5	CONT. Full, nicely shaped
10	Icc	<i>Ilex crenata</i> 'Convexa'	Convex Leaf Japanese Holly	24" W.D. X 30" HT.	CONT. Full, nicely shaped
40	Ips	<i>Ilex glabra</i> 'Shamrock'	Yew	#5	CONT. Full, nicely shaped
15	Imb	<i>Ilex x meserveae</i> 'Blue Princess'	Blue Holly	30" - 36" HT.	B&B Full, nicely shaped
280	jiv	<i>Juniperus horizontalis</i> varieties	Juniper Varieties	1 GAL	CONT. Full, nicely shaped
24	jc	<i>Juniperus x pfitzeriana</i> 'Compacta'	Compact Pfitzer Juniper	1 GAL	CONT. Full, nicely shaped
1	Mp	<i>Myrica pensylvanica</i>	Northern Bayberry	#5	CONT. Full, nicely shaped
20	Rtk	<i>Rosa x 'Bushing Knockout'</i>	Knockout Rose	#5	CONT. Full, nicely shaped
41	Tor	<i>Taxus baccata</i> 'repandens'	Spreading English Yew	18" - 24" SPREAD	B&B Full, nicely shaped
16	Vm	<i>Viburnum tomentosum</i> 'Mariesii'	Doublefile Viburnum	4 1/2' HT.	B&B Full, nicely shaped
Groundcover					
Qty.	Symbol	Botanical Name	Common Name	Size	Cond. Remarks
70	lm	<i>Lilium muscarif</i>	Lily Turf	1 GAL	CONT. Full, nicely shaped
Rain Garden					
Qty.	Symbol	Botanical Name	Common Name	Size	Cond. Remarks
60	tp	<i>Echinacea purpurea</i> 'Kims Knee High'	Purple Cone Flower	1 GAL	CONT. Full, nicely shaped
		<i>Eutrochium purpureum</i>	Joe-Pye Weed	1 GAL	CONT. Full, nicely shaped
		<i>Iris</i> varieties	Iris varieties	1 GAL	CONT. Full, nicely shaped
		<i>Liatris spicata</i> 'Mobydick'	Spiked Gay Feather	1 GAL	CONT. Full, nicely shaped
		<i>Panicum virgatum</i> 'Shenandoah'	Switchgrass	1 GAL	CONT. Full, nicely shaped
		<i>Rudbeckia fulgida</i>	Black Eyed Susan	1 GAL	CONT. Full, nicely shaped
		<i>Schizanthus luteus</i>	Little Bluestem	1 GAL	CONT. Full, nicely shaped
		<i>Symphoricarpos novae-angliae</i>	New England Aster	1 GAL	CONT. Full, nicely shaped



Symbol Legend

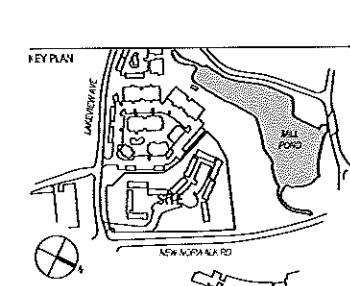
- Property Line
- Flagged Wetlands
- Note Call-Out
- Detail Call-Out
- Proposed Building
- Proposed Site Wall
- Proposed Concrete Paving
- Proposed Arch Pavers
- Proposed Gravel Paving
- Proposed Fence
- Existing Trees To Remain
- Proposed Deciduous Trees
- Proposed Evergreen Trees
- Proposed Shrubs
- Proposed Planting Beds
- Proposed Rain Garden

Notes

- Landscape Planting and Layout Overall Plan, Planting Lists and Proposed Planting Schedule - See Sheet LP-1.00
- Landscape Planting and Layout: Enlargement Plan - See Sheet LP-1.01
- Landscape Lighting Overall Plan, Lighting Notes, and Proposed Lighting Schedule - See Sheet L2.00
- Site, Lighting and Landscape Details - See Sheet L3.00

Planting Notes

- Be aware of all underground utilities prior to any planting operations. Contact "CALL BEFORE YOU DIG" prior to excavation.
- All plantings are to be installed by a qualified landscape contractor.
- The contractor shall be required to carry workmen's compensation insurance and comprehensive general liability insurance. Certificates will be required prior to signing contracts.
- Notify owner or landscape architect 72 hours minimum in advance of starting planting operations. Receive approval for layout of all bed lines and material locations prior to installation.
- The landscape architect reserves the right to reject inferior plant materials and substitutions. The landscape architect is willing to make two trips to suppliers to review and approve materials. Previously unapproved materials may be rejected at the site. Minimally, all materials will conform to the American Standard for Nursery Stock (ANSI Z60.1 - 2004) of the American Association of Nurserymen.
- All plant material shall have a nursery tag depicting plant species and variety.
- When there is a discrepancy between plant quantities shown on the plant list & the plan, use the quantities from the plant list.
- Test soil for pH and nutrients, adjust as required and receive approval prior to planting.
- PE to be 2 times wider than root ball or widest spread of container or bare roots.
- Set crown of root ball 2" above finished grade.
- Do not add fertilizer to planting soil for fall plantings.
- All plant material shall be guaranteed by the contractor to be in good, healthy and flourishing condition for a period of one year from the date of acceptance. The contractor shall replace, as soon as weather and seasonal conditions permit, all dead plants and all plants not in a vigorous, thriving condition, as determined by the landscape architect during, and at the end of the guarantee period. Warranty replacement will be provided at no cost to the owner and include materials and labor. Contractor is responsible for repair of any damage incurred during replacement of warranty materials. Warranty period to begin at the final approval of plantings by Landscape Architect and client. Contractor is responsible for maintaining the plant material until final approval is given. This will include watering the plants.
- All existing and proposed vegetation shown on the site plan drawings shall be maintained in a healthy and vigorous growing condition throughout the duration of the project. All vegetation not so maintained shall be replaced with new comparable material at the beginning of the next growing season.
- All plant material shall be installed in accordance with the details on the contract drawings.
- Contractor shall layout all plant materials in locations per plan and receive approval by Landscape Architect prior to installation.
- All planting beds shall receive 3" minimum of shredded cedar or pine bark mulch. All planting beds shown shall be mulched as a continuous bed.
- Contractor shall make fine grade adjustments as necessary, and soil to create finished lawn or as otherwise directed by landscape architect.
- Final grade in all cases shall slope away from building a minimum of 2" per foot.
- Irrigation System shall be provided as a Design/Build contract, by Owner.



PROJECT DATA

PROJECT NUMBER	1806
CURRENT SUBMISSION DATE	6/25/18
DRAWN	WC
CHECKED	TC
SCALE	1" = 32'
FILE REFERENCE	K:\1806\06_Canaan Parish Redevelopment\06_S011806_CANAANPARISH_1807_20.rvt

HISTORY OF SUBMISSIONS

No.	Date	Description
1	6/25/18	For Dates of Approval

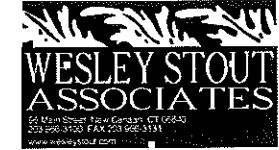
SITE PLAN SUBMISSION

SHEET TITLE

Landscape Planting & Layout: Overall Plan

LP-1.00

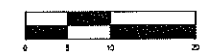
Copyright © Amenta|Emma Architects, P.C. All rights reserved. Copying, reproduction or distribution, prohibited without express written permission.



CANAAN PARISH REDEVELOPMENT, LLC

Canaan Parish Redevelopment

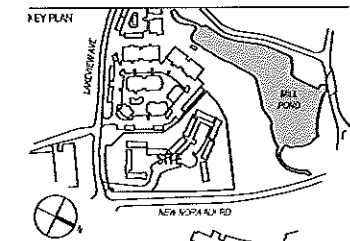
186 LAKEVIEW AVE  
NEW CANAAN, CT 06840



CONSULTANTS



KEY PLAN



PROJECT DATA

PROJECT NUMBER	15308
CURRENT SUBMISSION DATE	6/25/18
DESIGN	TC
CHECKED	WS
SCALE	1"=10'
FILE REFERENCE	K:\15308\Canaan Parish Redevelopment\05_S015008_CANAANPARISH_2017_S01.dwg

HISTORY OF SUBMISSIONS

No.	Date	Description
1	6/25/18	Divisions of Approval

SITE PLAN SUBMISSION

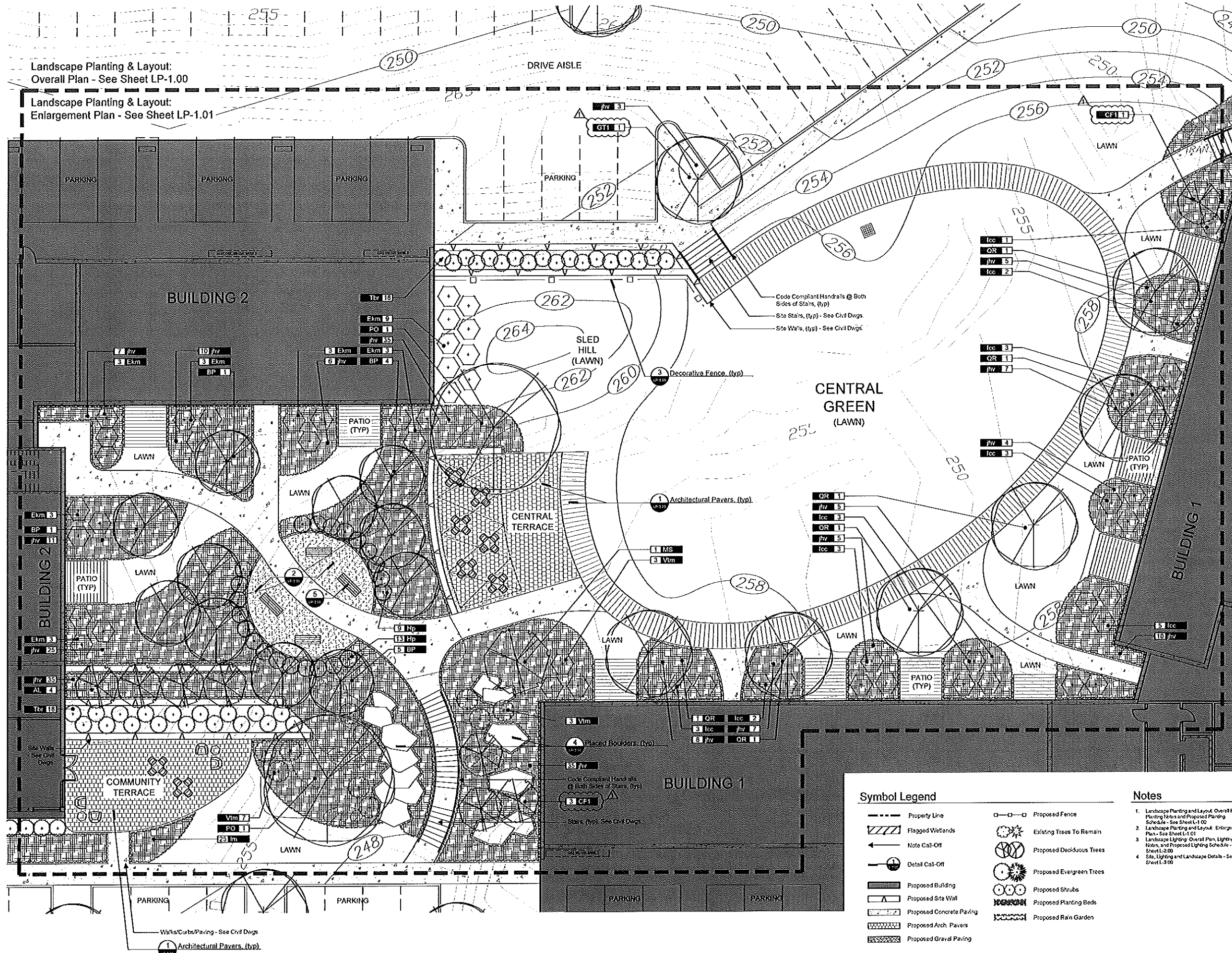
SHEET TITLE

Landscape Planting & Layout:  
Enlargement Plan

LP-1.01

Landscape Planting & Layout:  
Overall Plan - See Sheet LP-1.00

Landscape Planting & Layout:  
Enlargement Plan - See Sheet LP-1.01



Symbol Legend

Property Line	Proposed Fence
Flagged Wetlands	Existing Trees To Remain
Note Call-Off	Proposed Deciduous Trees
Detail Call-Off	Proposed Evergreen Trees
Proposed Building	Proposed Shrubs
Proposed Site Wall	Proposed Planting Beds
Proposed Concrete Paving	Proposed Rain Garden
Proposed Arch. Pavers	
Proposed Gravel Paving	

Notes

- Landscape Planting and Layout, Overall Plan, Planting Notes and Proposed Planting Schedule - See Sheet LP-1.00
- Landscape Planting and Layout, Enlargement Plan - See Sheet LP-1.01
- Landscape Lighting, Overall Plan, Lighting Notes, and Proposed Lighting Schedule - See Sheet LP-2.00
- Site, Lighting and Landscape Details - See Sheet LP-3.00

© Copyright Amenta | Emma Architects, P.C. All rights reserved. Copying, reproduction or distribution prohibited without express written permission.