

Onion-5



Q: Why do we cry while cutting onions ?

A: Sulfur in Onion cells gets mixed with moisture in air and thus irritates eyes

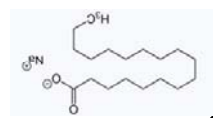
Q: How does soap work ?

A: Chemical in soap has one hydrophilic (water-loving) and one lipophilic (fat-loving) ends. The lipophilic ends stick to dirt. These get engulfed in the soap and are washed away with water.

Soap-4



Q: What is the main chemical of soap

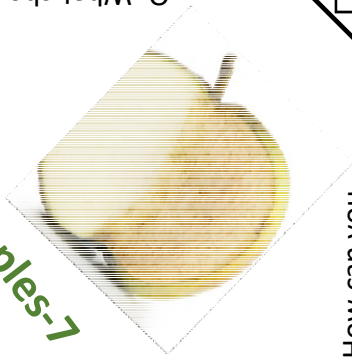


A: Sodium stearate

A: Brush or dip sliced apples in lemon juice, citric acid will slow the enzymatic reaction.

Q: How can you prevent sliced apples from turning brown?

Apples-7



Q: What chemical in apples cause them to turn brown ?

A: Tyrosinase, an enzyme, oxidizes when exposed to oxygen in air and causes browning.



A: Caffeine

Q: What in Coffee keeps us awake?

Coffee-6



Q: How does coffee keep us awake ?

A: Caffeine works by blocking an action of a natural brain chemical that is associated with sleep.

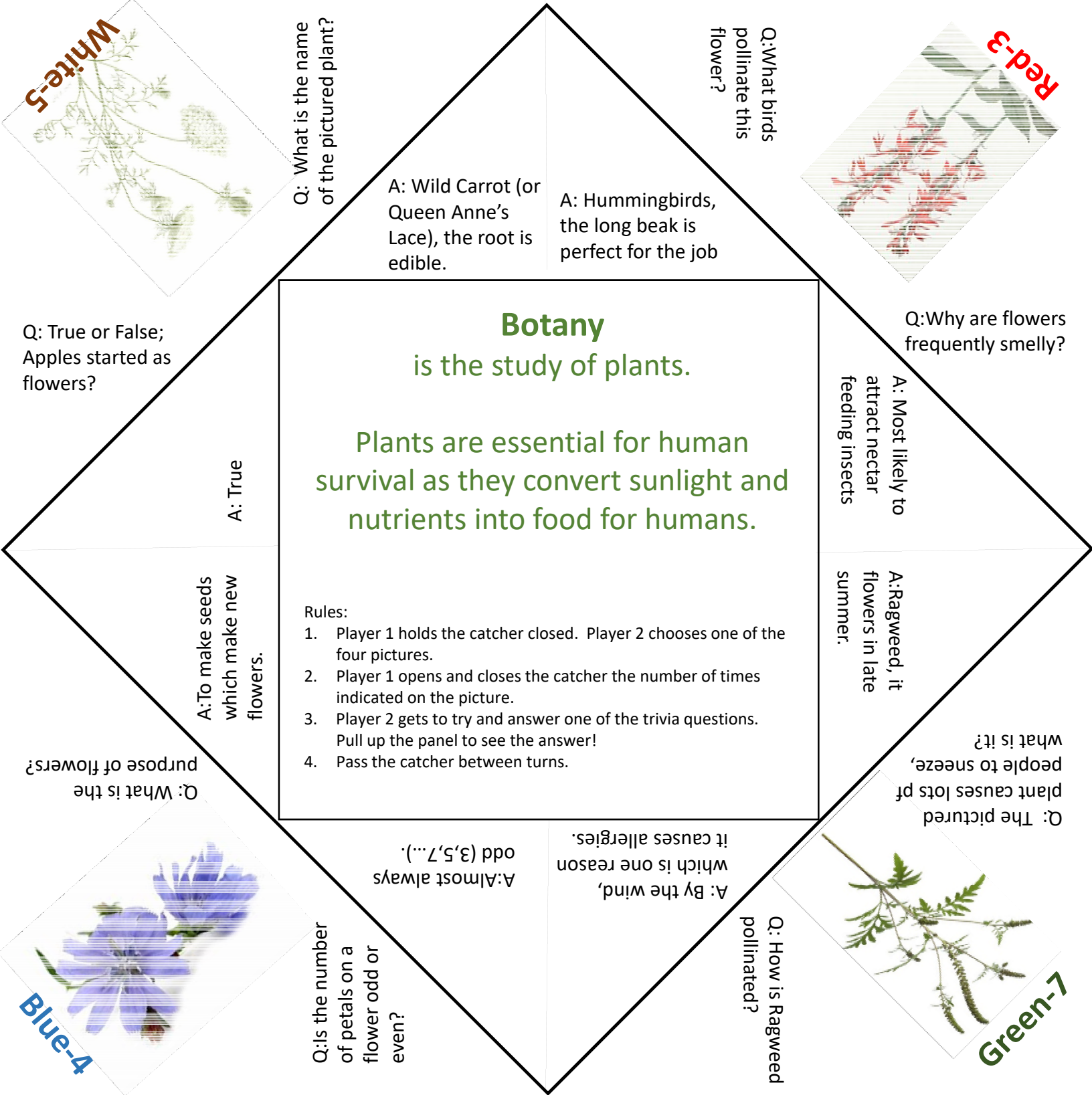
A: Wear goggles or Refrigerate your onion before cutting it

Q: How can you prevent your eyes from watering while cutting onion ?

Chemistry in Everyday Life

Rules:

1. Player 1 holds the catcher closed. Player 2 chooses one of the four pictures.
2. Player 1 opens and closes the catcher the number of times indicated on the picture.
3. Player 2 gets to try and answer one of the trivia questions. Pull up the panel to see the answer!
4. Pass the catcher between turns.



Maple-5



Q: How many species of Maple are there?

A: 128 species, but only 12 in North America

Q: What foods are made with sap from Sugar Maples?

A: Maple syrup, maple sugar, maple candies

Q: What is the preferred leaf for gypsy moths?

A: Oaks, but they will eat others.

Oak-3



Q: Why do squirrels bury acorns?

A: To save food for the winter.

A: Five, other pines have groups of 2 or 3.

Q: White pine needles are in groups of how many?



Pine-4

Q: What kind of tree keeps its leaves year round?

A: Evergreen. Deciduous trees drop their leaves.

A: Chestnut blight, imported to the US in 1904 killed most mature trees.

Q: What imported disease kills Chestnut trees?

Chestnut-8



Q: Are chestnuts edible?

A: Yes, but Horsechestnuts are not edible

Rules:

1. Player 1 holds the catcher closed. Player 2 chooses one of the four pictures.
2. Player 1 opens and closes the catcher the number of times indicated on the picture.
3. Player 2 gets to try and answer one of the trivia questions. Pull up the panel to see the answer!
4. Pass the catcher between turns.

Dendrology
Is the study of trees and woody plants.

It is essential we learn about all the ways that trees benefit humans and how to protect them.