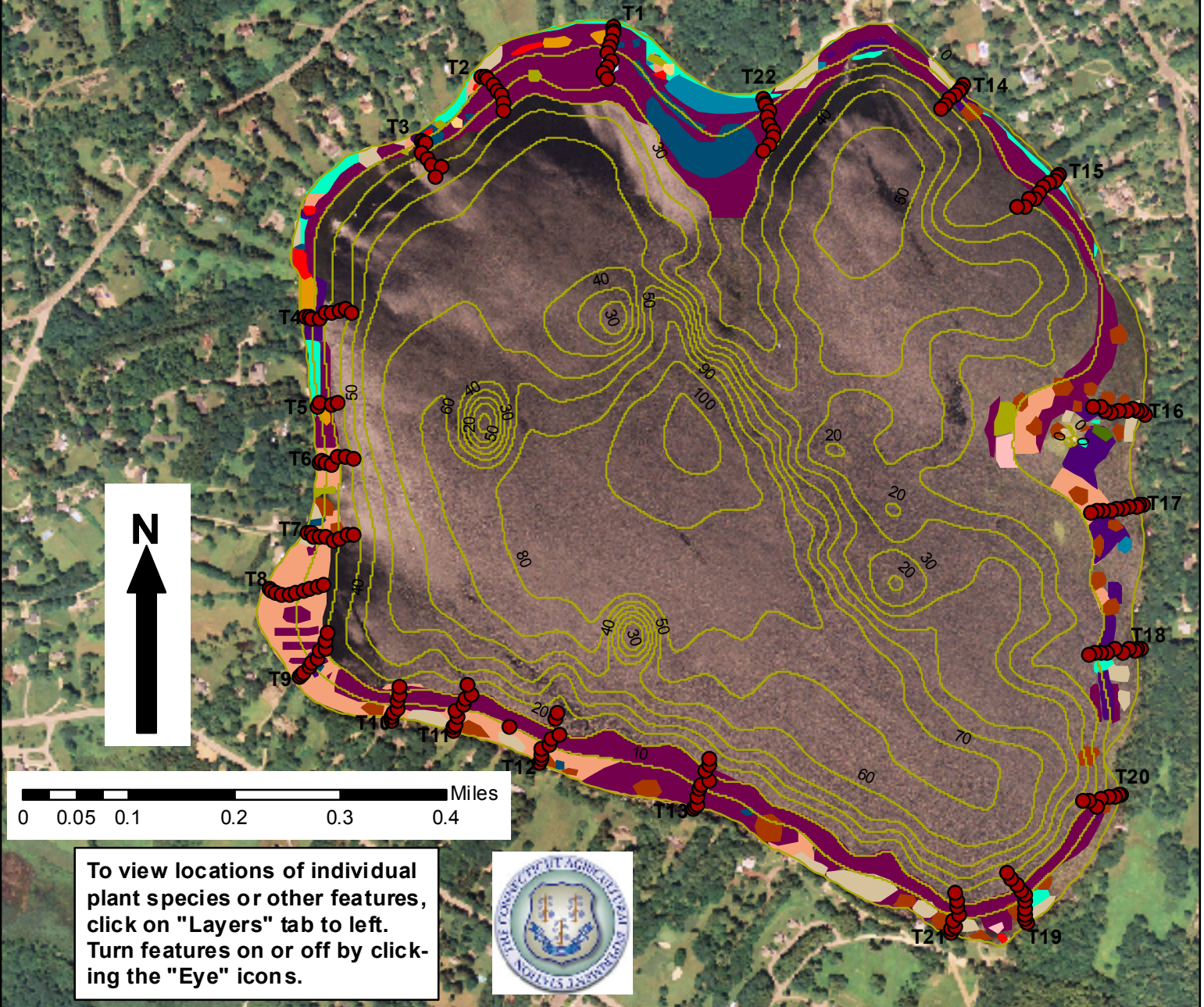


Wonoscopomuc Lake, Salisbury, 348 Acres

Invasive Aquatic Plant Program, Surveyed September 15, 2004
by Robert Capers and Roslyn Selsky



To view locations of individual plant species or other features, click on "Layers" tab to left. Turn features on or off by clicking the "Eye" icons.



Legend

- | | | |
|--------------------------------|----------------------------------|--------------------------------|
| Transect Points | <i>Elodea canadensis</i> | <i>Ceratophyllum demersum</i> |
| Bathymetry | <i>Potamogeton zosteriformis</i> | <i>Najas flexilis</i> |
| <i>Potamogeton robbinsii</i> | <i>Potamogeton pusillus</i> | <i>Myriophyllum spicatum*</i> |
| Charophyte | <i>Potamogeton gramineus</i> | <i>Potamogeton perfoliatus</i> |
| <i>Ranunculus longirostris</i> | <i>Potamogeton illinoensis</i> | <i>Vallisneria americana</i> |
| <i>Potamogeton crispus*</i> | <i>Stuckenia pectinata</i> | |
| | <i>Potamogeton amplifolius</i> | |
- *Invasive