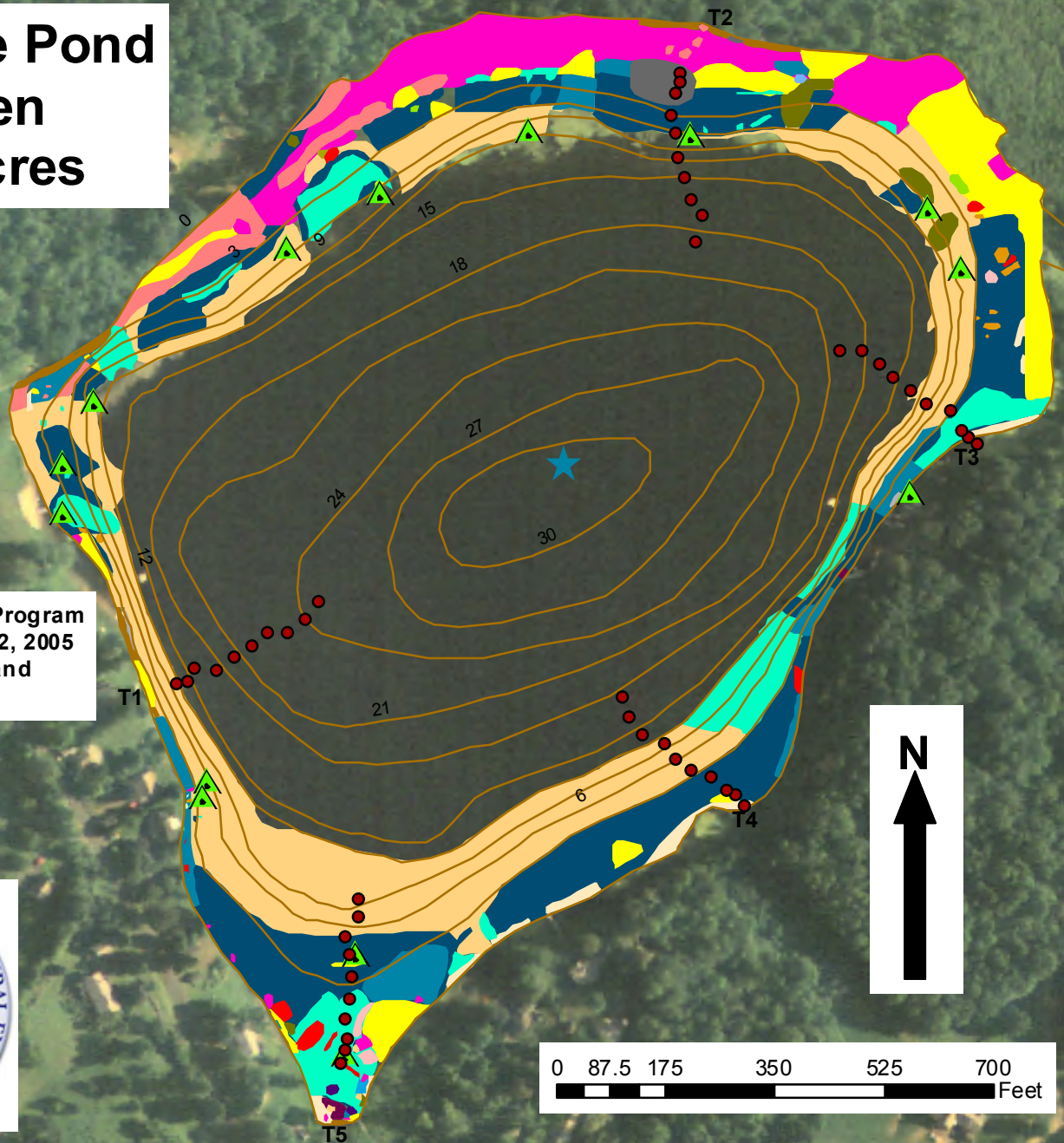


West Side Pond Goshen 41.9 Acres

Invasive Aquatic Plant Program
Surveyed September 12, 2005
by Robert Capers and
Roslyn Selsky



Legend

- | | | |
|-----------------------------------|----------------------------------|--------------------------------|
| Water Sample Site | <i>Najas flexilis</i> | <i>Vallisneria americana</i> |
| Transect Point | <i>Nymphoides cordata</i> | <i>Potamogeton gramineus</i> |
| Plant Collection Site | <i>Potamogeton epihydrus</i> | <i>Nymphaea odorata</i> |
| Bathymetry | <i>Potamogeton natans</i> | <i>Nuphar variegata</i> |
| <i>Ceratophyllum demersum</i> | <i>Potamogeton pusillus</i> | <i>Brasenia schreberi</i> |
| <i>Eleocharis sp.</i> | <i>Potamogeton zosteriformis</i> | <i>Potamogeton amplifolius</i> |
| <i>Elodea canadensis</i> | <i>Sagittaria sp.</i> | <i>Potamogeton robbinsii</i> |
| <i>Eriocaulon aquaticum</i> | Unidentified sedge | |
| <i>Megalodonta beckii</i> | <i>Utricularia purpurea</i> | |
| <i>Myriophyllum alterniflorum</i> | | |
| <i>Myriophyllum spicatum</i> * | | |
- *Invasive

To view locations of individual plant species or other features, click on "Layers" tab to left and "+" next to "Features." Turn features on or off by clicking the "eye" icons.