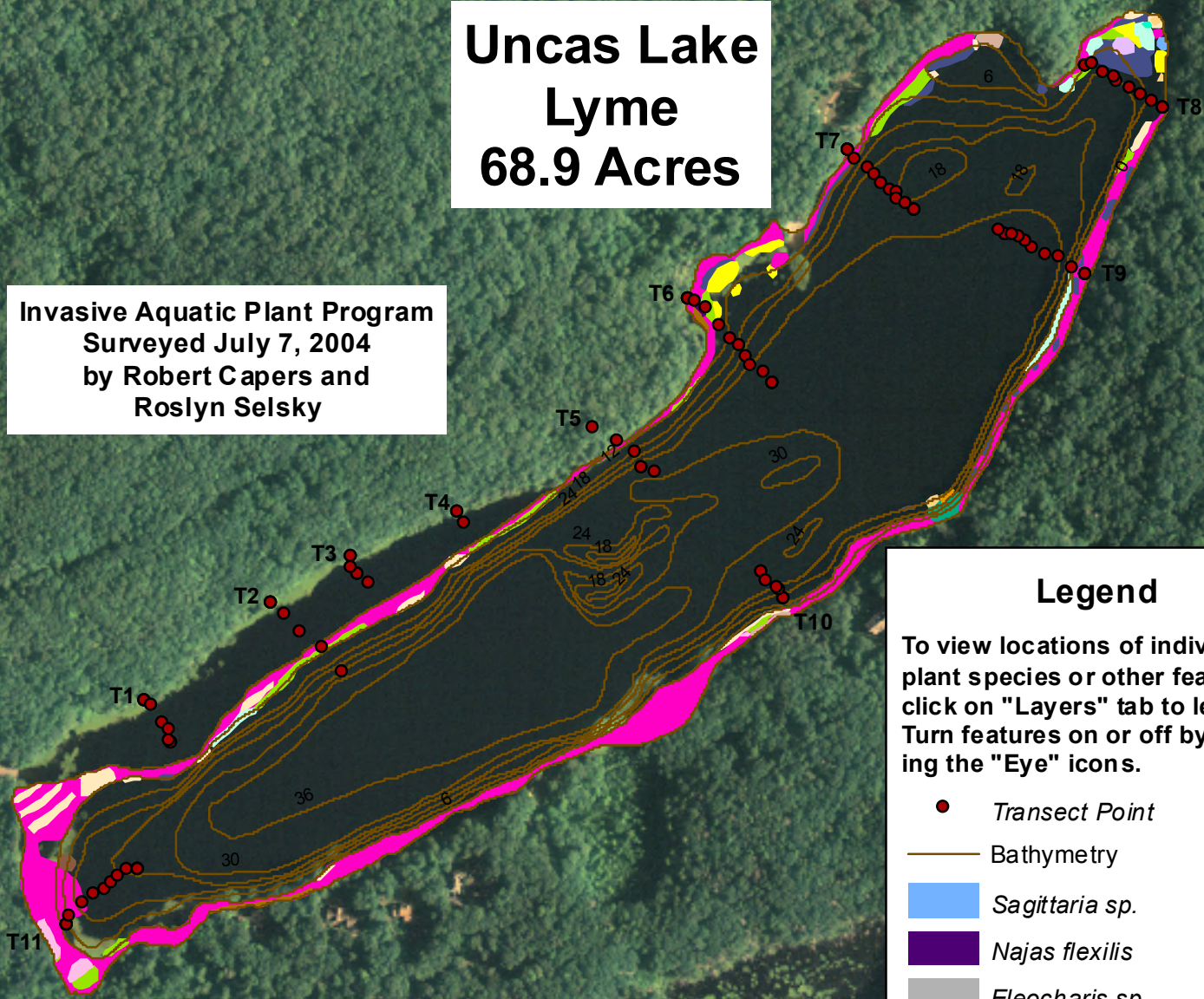


Uncas Lake Lyme 68.9 Acres

Invasive Aquatic Plant Program
Surveyed July 7, 2004
by Robert Capers and
Roslyn Selsky



Legend

To view locations of individual plant species or other features, click on "Layers" tab to left. Turn features on or off by clicking the "Eye" icons.

- *Transect Point*
- Bathymetry
- Sagittaria sp.*
- Najas flexilis*
- Eleocharis sp.*
- Vallisneria americana*
- Utricularia purpurea*
- Potamogeton epihydrus*
- Nuphar variegata*
- Potamogeton robbinsii*
- Potamogeton spirillus*
- Eriocaulon aquaticum*
- Utricularia gibba*
- Potamogeton natans*
- Brasenia schreberi*
- Ceratophyllum demersum*
- Potamogeton bicupulatus*
- Utricularia geminiscapa*
- Isoetes tuckermanii*
- Nymphaea odorata*

*Transect points from 5 to 70 meters are interpolated.

