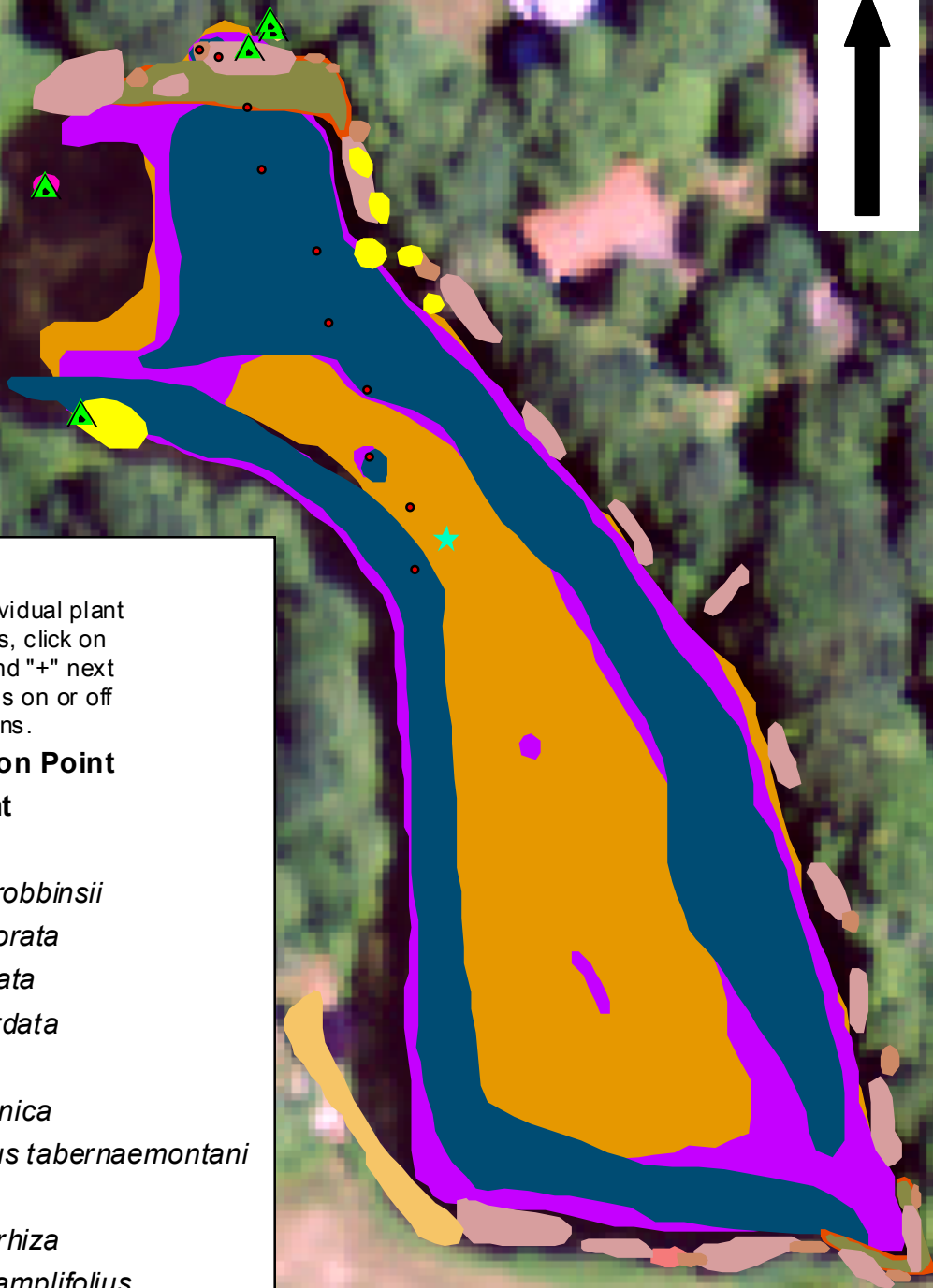




Town Millpond, Guilford

2.9 Acres

Invasive Aquatic Plant Program
Surveyed July 30, 2009 by
Greg Bugbee and Michael Cavidini



Legend

To view locations of individual plant species or other features, click on the "layers" tab to left and "+" next to features. Turn features on or off by clicking the "Eye" icons.

 **Plant Collection Point**

 **Transect Point**


 **Water Data**

 *Potamogeton robbinsii*


 *Nymphaea odorata*

 *Nuphar variegata*

 *Pontederia cordata*

 *Typha sp.*

 *Peltandra virginica*

 *Schoenoplectus tabernaemontani*

 *Lemna minor*

 *Spirodela polyrhiza*

 *Potamogeton amplifolius*

 *Elodea nuttallii*

 *Ceratophyllum demersum*

80 40 0 80 Feet

