

# Taunton Lake

Newtown, CT

124 acres


## Invasive Aquatic Plant Program


Surveyed June 14, 2010

by Andrea Ellison, Michael Cavadini,  
Jennifer Fanzutti, and Julius Pasay




 Plant Collection Point

 Transect Point

 Water Data

 *Spirodela polyrhiza*

 *Isoetes* sp.

 *Elatine* sp.

 *Sagittaria* sp.

 *Potamogeton crispus* \*

 *Nuphar variegata*

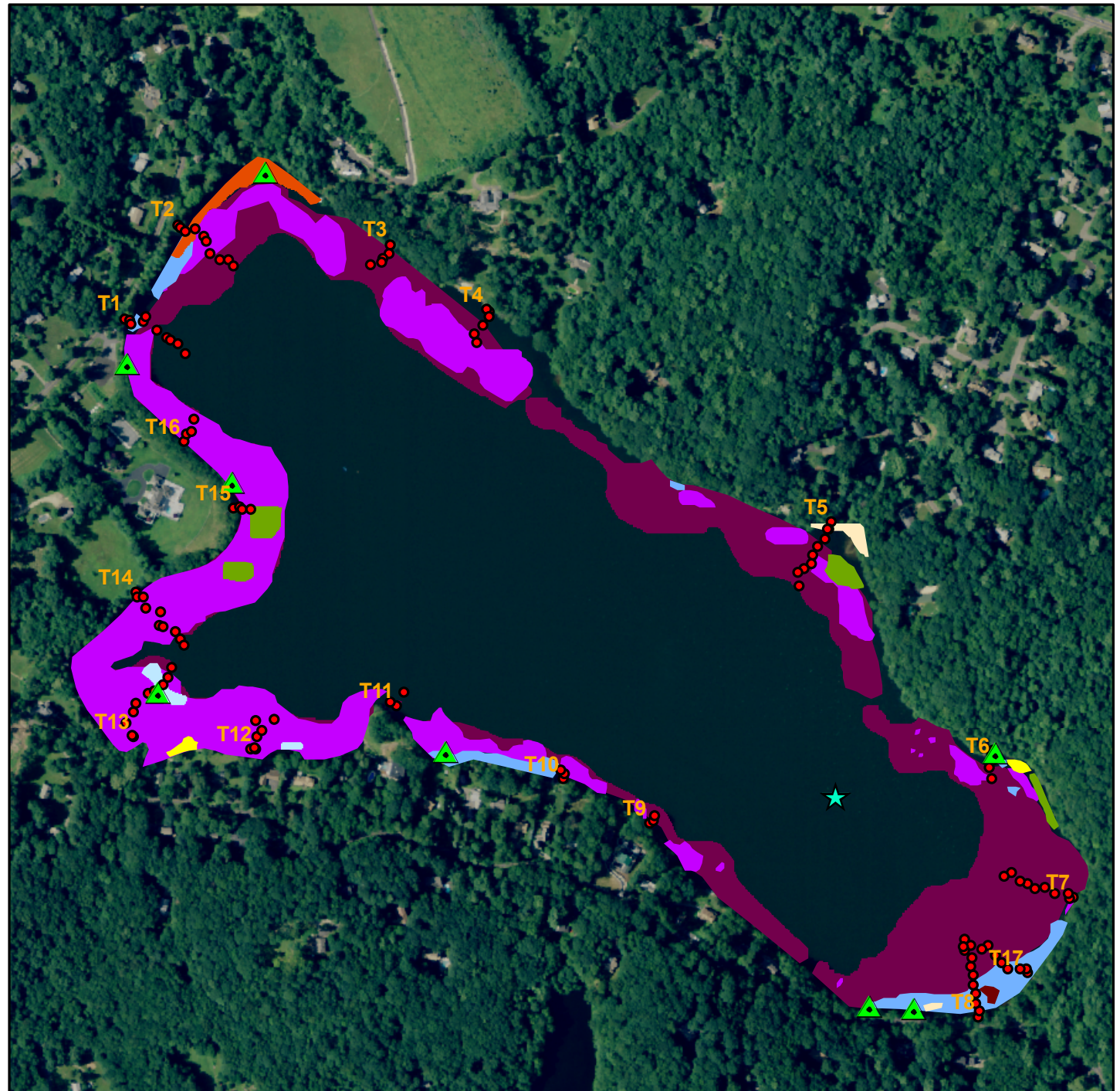
 *Potamogeton foliosus*

 *Elodea nuttallii*

 *Myriophyllum spicatum* \*

\* Invasive

To view locations of individual plant species or other features click on "Layers" tab to the left and "+" next to "Layers File". Turn features on or off by clicking the "Eye" icons.



0 500 1,000 2,000 Feet