








Lake Quassapaug

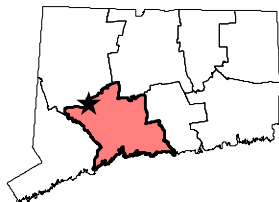
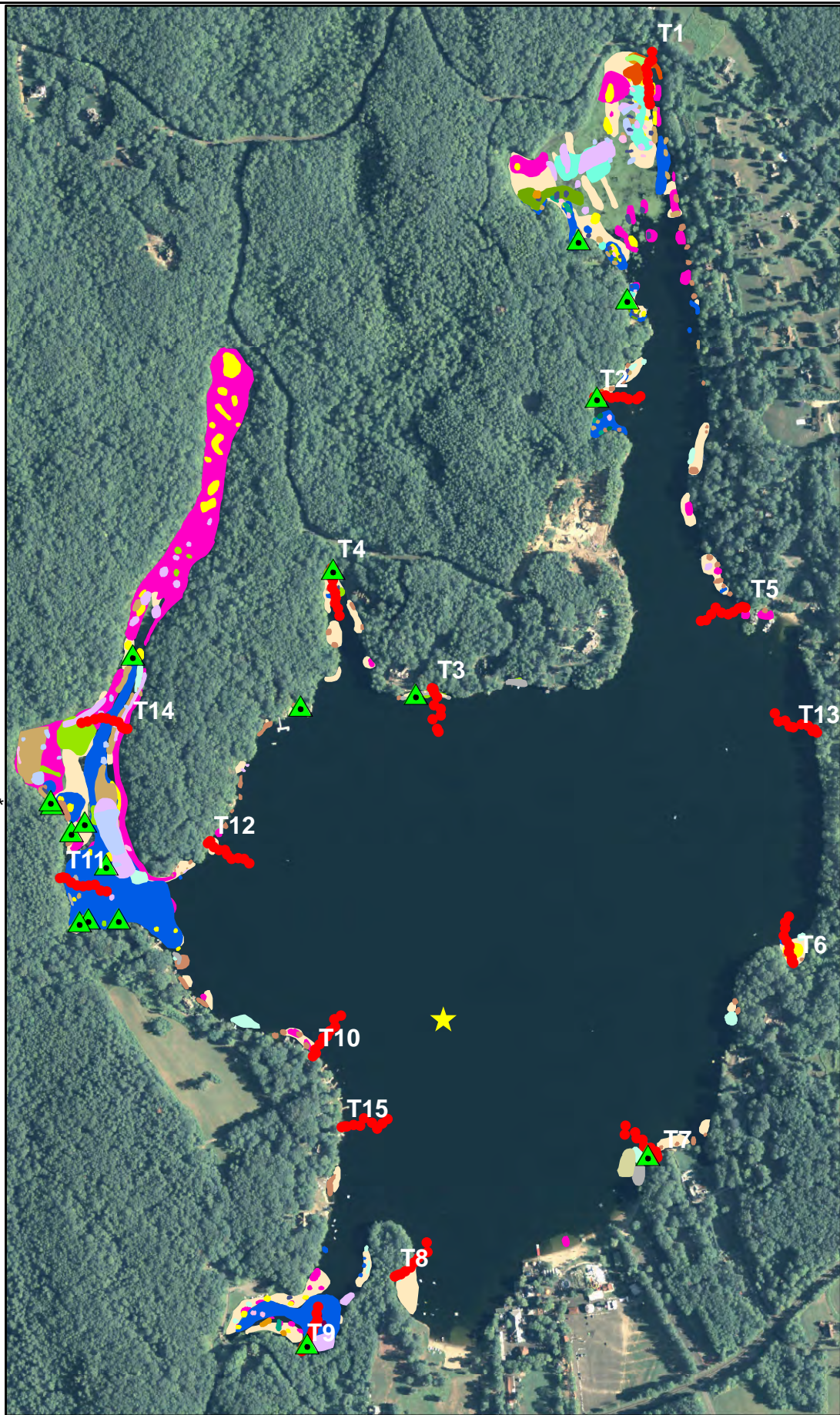
Middlebury, CT
297 acres

Surveyed July 21-26, 2011
by Jordan Gibbons, Jennifer Fanzutti and Michael Cavadini

Invasive Aquatic Plant Program

Legend

-  Collection Point
-  Water Data
-  Transect Point
-  *Brasenia schreberi*
-  *Callitriche sp.*
-  *Ceratophyllum demersum*
-  *Elatine sp.*
-  *Eleocharis sp.*
-  *Isoetes sp.*
-  *Myriophyllum heterophyllum**
-  *Myriophyllum spicatum**
-  *Najas guadalupensis*
-  *Nuphar variegata*
-  *Nymphaea odorata*
-  *Pontederia cordata*
-  *Potamogeton bicupulatus*
-  *Potamogeton epihydrus*
-  *Potamogeton foliosus*
-  *Potamogeton natans*
-  *Potamogeton pulcher*
-  *Potamogeton pusillus*
-  *Spirodela polyrhiza*
-  *Utricularia geminiscapa*
-  *Utricularia gibba*
-  *Utricularia macrorhiza*
-  *Utricularia purpurea*
-  *Utricularia radiata*
-  *Wolffia sp.* *Invasive



To view locations of individual plant species or other features, click on "Layers" tab to left. Turn features on or off by clicking the "Eye" icons.

