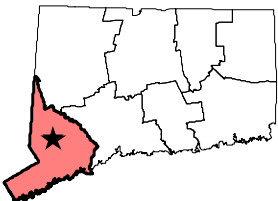
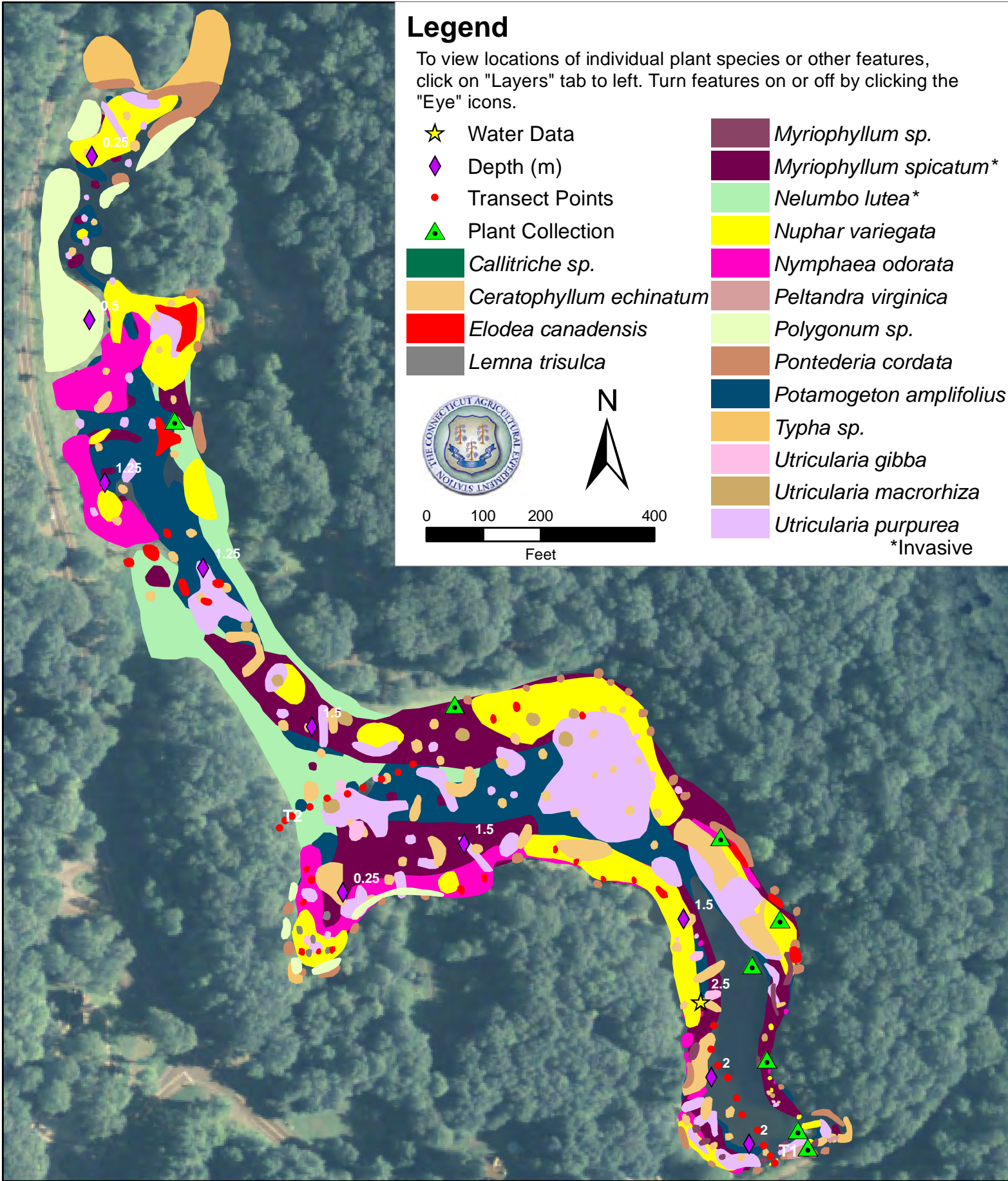
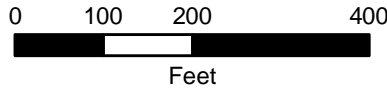


Legend

To view locations of individual plant species or other features, click on "Layers" tab to left. Turn features on or off by clicking the "Eye" icons.

- ★ Water Data
- ◆ Depth (m)
- Transect Points
- ▲ Plant Collection
- *Callitriche* sp.
- *Ceratophyllum echinatum*
- *Elodea canadensis*
- *Lemna trisulca*
- *Myriophyllum* sp.
- *Myriophyllum spicatum**
- *Nelumbo lutea**
- *Nuphar variegata*
- *Nymphaea odorata*
- *Peltandra virginica*
- *Polygonum* sp.
- *Pontederia cordata*
- *Potamogeton amplifolius*
- *Typha* sp.
- *Utricularia gibba*
- *Utricularia macrorhiza*
- *Utricularia purpurea*
*Invasive



Putnam Park Pond
Easton, CT
 14 acres

Surveyed September 26-27, 2011
 By Jordan Gibbons and Michael Cavadini
 Invasive Aquatic Plant Program